

555 Mini Ranchettes



20 Acre Horse Training Property- Bend OR. 36x84 and 38x48 barns, many stalls, lean too, outdoor arena, heated therapy and tack room, shed, shop, storage building, 17.70 irrigated acres, more. 4 bdr, 3 bath, 2895 sq.ft. home, \$850,000. **Kerri Talburt: Broker 541-980-7911** LICO Realty Group/Keller Williams Central Oregon

Springdale, WA. 40 Acres with irrigation 5 bedroom, 3 bath, 3600 sq.ft. concrete insulated, form house with hot water radiant heating and 2 car attached garage, built in 2003, also 112'x32' 7 bay storage shed. Priced to sell \$499,913. Contact Leon Vincent with Kelly Right Real estate 509-599-7382

561 Ranches

2000+ Deeded farmable acres, part is brush cleared. Corrals, calving barn, two solar wells and some equipment. Good gravel road north and south side. Sale/ trade or lease. Motivated! Possible financing available. Burns, OR. 541-589-4524

"The Capital Press is IT!"
Lorin Zastoupil • Leaburg, Ore.
Subscribe at 1-800-882-6789

561 Ranches



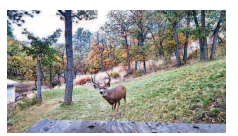
Highly productive alfalfa, grass hay and grain ranch with two center pivots that were installed 3 years ago, plus 8" buried mainline throughout the ranch supporting 12 wheel lines. Grain drier included and located in one of the barns. Two rental homes, two historic wooden barns, 2 ponds, with state water rights. Chicken farm facilities still in place with two barns, feeders, brooder building, automatic egg sizer, and more. Hunting opportunities for waterfowl, upland game birds, big game. Honey Lake frontage supports beautiful views and lake access, plus water rights to Honey Lake. Large shop and equipment shed. Live-stock scale and seasonal grazing use after hay is produced. This place has it all. \$3,400,000. Janesville, CA. <https://www.californiaoutdoor-properties.com/listing/blinkenstaff-ranch>. ca_cowgirl_1@hotmail.com. 530-251-7857

Capital Press CLASSIFIEDS
1-800-882-6789
CapitalPress.com

561 Ranches

SX RANCH - Turn key year-round cattle operation. Three ranches totaling 7,125 acres west of Alturas in Modoc County, CA. Farm equipment, two custom homes, employee homes, and out-buildings. Well-balanced mix of properties offers irrigated cropland, irrigated pasture and meadows, and rangeland. Year-round cattle operation; carrying capacity of 1,885± AU annually.

Pay No Tax Selling Any Property. 1LessTax.com New Tax Code- Your CPA Invited. info@1LessTax.com, 800-333-0801



HUNTERS PARADISE LOG HOME on 10.61 acres nestled in your own canyon of oaks and pines connected to 75,000 acres of Ahtanum State Forest. Late season archery GMU 3681/3682, Yakima, WA, \$249,095. Serious Buyers only call for more information 509-961-7986



7000 Acre Cattle Ranch and Farm for Sale: located north of Boise, in Midvale, Idaho. Beautiful contiguous land, fully sustainable. Borders Crane Creek Reservoir, asking \$7,600,000. Contact Mike Samson, Expert Realty, LLC. 208-584-9302 www.idahoranchlandandfarmforsale.com

5.5 Acres in Lyle, WA. 70x45 barn with 6 stalls. 2 bedroom house, air cooled, oversize garage, 50 GPM well, fenced and cross fenced. 2 RV parking spaces, \$298,500. Owner may carry contract. 509-365-2112, 509-310-3992

for RANCHES & FARMS call Crater Lake Realty, Inc.
Linda L. Long, Broker
541-891-5562
Chiloquin, OR
linda@craterlakerealtyinc.com • craterlakerealtyinc.com

United Country Real Estate
Jett Blackburn Real Estate Inc.

S&F LAND & CATTLE CO
SE Oregon Farm/Ranch located in the Warner Valley near Adel, OR which is approx. 30 miles from Lakeview, OR. 745 acres with high quality meadows, 548 ac flood irrigated, 166 ac pivot, 20 ac wheel and hand lines. Water rights administered thru "Adel Water Improvement District." **\$2,150,000**

CABIN IN THE WOODS
Great hunting property located north of Burns OR bordering the Malheur Forest. 1179+ acres with lots of wildlife including elk, deer, black bear, bobcats & cougars. Nice size pond, 7 stock wells, 280 ac BLM grazing allotment. One room cabin with solar Power. Great oasis away from it all. **\$925,000**

Curt Blackburn, Broker 541-589-0025 Nancy Gregg, Broker 541-589-1362
707 Ponderosa Village • Burns, OR 97720
541-573-7206 • Fax: 541-573-5011
E-mail: jblackbn@centurytel.net
www.Jettblackburn.com

HALL AND HALL
Dedicated to Land and Landowners Since 1946

MCEWEN RANCH & CATTLE COMPANY RIVERSIDE, OREGON
Expansive legacy ranching operation encompassing 52,445± deeded acres and 100,000± acres of grazing allotments in southeastern Oregon. Capacity for 1,525 cows and producing hay on 1,500± acres.
Offered at \$20,000,000

WEISER RIVER RANCH WEISER, IDAHO
These 2,103± deeded acres, with over three miles of the Weiser River and 500± irrigated acres, feature incredibly diverse wildlife including waterfowl, upland birds, wild turkey, big game. 75 miles northwest of Boise.
Offered at \$7,900,000

LOWER SALMON RIVER RANCH COTTONWOOD, IDAHO
Diverse 5,917± deeded acre ranch in the heart of Hells Canyon located 35 miles from Cottonwood featuring dramatic scenery, creeks, timber, wildlife, and nearly 3 miles of frontage on the Salmon River.
Offered at \$4,875,000

TRENT JONES | 208.622.4133 | TJONES@HALLANDHALL.COM
SALES | AUCTIONS | FINANCE | APPRAISALS | MANAGEMENT

NEW LISTING! \$4,250,000
POLLY CREEK RANCH PRINEVILLE, OR
2710 acres | 221 acres water rights
1698 sf home | 2 shops
www.pollycreekranch-prinevilleoregon.com

Cascade Sotheby's International Realty
Farm & Ranch DIVISION
PAM MAYO-PHILLIPS & BROOK HAVENS PRINCIPAL BROKERS
541.480.1513 | 541.604.0788
pam.mayo-phillips@sothebysrealty.com
brook.havens@sothebysrealty.com
www.desertvalleygroup.com

RANCH

PRICE REDUCTION / OWNER FINANCE
500 animal units - approximately 4,100 deeded acres - 450 IRRIGATED WITH FREE, ARTESIAN AND SPRING FED WATER heading and used on the home place - private BLM - nice improvements - elk, deer, water fowl, pheasant, quail and fishery. Management currently in place. Well rounded working/recreational opportunity.
Real Estate at \$4,250,000 • 1/3 down • 3% interest. You cannot match the terms and dependable water!

See @: agrilandsrealestate.com
Jack Horton 208-830-9210
Rae H. Anderson 208-761-9553
AGRILANDS REAL ESTATE
Medical Springs, OR
541-853-1212
agrilandsrealestate.com

561 Ranches



38.19 Acre Farm/Ranch: stunning views overlooking Mill City/ Lyons Oregon. Organic farming, cattle, grow grains, and trees. Natural spring water source, shed, 1740 sq.ft., 2 bedroom, 2 bath, \$275,000. Serious Buyers only. Call for more information 971-701-7446 BHHS Real Estate Professionals

NEW LISTINGS
KNIFE LAND CO.
2,916± acre ranch in Payette, ID \$4,000,000
420± acre ranch in New Meadows, ID \$3,131,000
Oregon timbered/grazing, 83±, 795± acres. \$93,000 - \$1,200,000
Adrian, Oregon farms/ranches 125± - 312± acres: \$796,500 - \$2,146,500
KNIFE LAND NORTH
545± acre ranch south of Spokane, WA \$2,200,000
419± Acre ranch west of Spokane, WA \$1,900,000
208.345.3163 www.knifeland.com

564 Farms

CHRISTMAS TREE FARM FOR SALE

ACTIVE WORKING CHRISTMAS TREE FARM: 50 acres with 10,000 Christmas Trees in ground. 4 bedroom, 1-1/2 bath home, shop, greenhouse, garage, barn and honey room. All equipment needed included: 2 tractors, 2 tree balers, large conveyor, small brush-hog, spray rig, planting auger, "loop bar" chain saws, and 3 pair stumps. Water Rights. On Hwy-12, 15 miles West of Grand Mound, WA off Hwy I-5. 360-273-3516

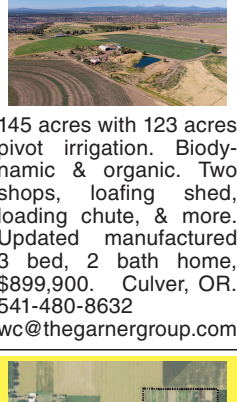
WALDO REAL ESTATE
Local Friendly Professional
541-889-8160
378 W Idaho Ave. Ontario, OR 97914

ATTENTION HUNTERS
Willowcreek Oregon. 704 acres of excellent upland game bird hunting. The Willowcreek runs through much of the property keeping water available for game and providing a lot of habitat. Large areas of brush provide great cover for pheasant and quail, but also mule deer are abundant in the area and stay on the property most of the summer and fall. This is an excellent hunting property. Let's top it all off with a 555-acre water right and most of the property farmed or grazed. Tenant farmers should be accessible paying very decent rents. This property is large enough to hold birds even with daily hunting. For more info contact Scott Lamb or Dee Anne Mosman.
Scott Lamb Broker, GRI, OR/ID 208-739-2119 cell
Dee Anne Mosman Broker, GRI, OR/ID 208-707-4444 cell
Office - Toll Free: 1-800-398-3457
Email: waldoreo@waldore.com
www.waldore.com

564 Farms



139 acre organic & bio-dynamic luxury farm property on Crooked River Canyon. Main house 5300+ sqft., guest house 1300+ sqft., newly completed barn/ shop, horse barn, & more, \$1,800,000. Culver, OR. 541-480-8632 tinyurl.com/6319keeney



564 Farms

SALE OR LEASE
Banks, OR.
96 Acre nursery farm, 2 homes, shop and out-buildings, 40 acres gravel yard, 43 acres dirt beds, 100x200 steel building, dairy creek water rights, 4" TVID box, recirculation pond, 2" valve every 40', fenced. Highway frontage. 503-320-0783

20 Acres: Burns, Oregon
3 bedroom, 2 bath, 1984 mobile home. Electric, water, septic, propane, \$59,000. Call **Pamamore Realty 541-417-1974**

BEST SELLERS...
"...Sold everything in the herd but a couple of old bulls."
Kester Ranch, Cottage Grove, OR
Call 1-800-882-6789 and sell too!

570 Orchard & Vineyard Property



96.5 Acres
Bald Peak Farmhouse. Working farm currently leased for cattle with out-buildings. Vineyard possible. 30 acres classified Premium for vineyard production. 52 acres currently wooded. Building site. Spectacular Valley and Sweeping Coast Range Views, \$1,290,000. 18615 NE Tykeson Rd., Newberg, OR. Windermere Realty Trust. Rick Christensen 503-680-1111 RMLS#17483354

564 Farms

564 Farms

564 Farms

564 Farms

564 Farms

564 Farms

564 Farms

FarmSeller® The LARGEST farm website in the west!
www.farmseller.com
(503) 364-4798 • Independent Agricultural Real Estate Website
1-800-882-6789 • Nationwide Exposure



Selling Rural Property?
List with these Farmseller member agencies:
• 6 Color Pictures Per Listing • Unlimited Listings Per Agent • Rotating Featured Listings • Wide Range of Search Criteria • Mortgage Calculator

CALIFORNIA HOLLISTER San Benito Realty 831-637-5563	BEND Cascade Sotheby's International Realty 541-923-1376	JOHN DAY Eastern Oregon Realty 541-575-2121	WALDO Waldo Real Estate 541-889-8160	SILVERTON Northwest Oregon Realty Group 503-873-8600
IDAHO BOISE Knipe Land 208-345-3163	BONANZA Summit Realty 541-545-1510	JOSEPH Real Estate Associates 541-432-4060	PENDELTON Whitney Land Co. 541-278-4444	SISTERS Cascade Sothebys International 541-771-0931
MALAD Flinders Realty & Exchange 208-766-7653	BURNS Jett Blackburn Real Estate 541-573-7206	PLEASANT HILL The Deb Elliott Group & Keller Williams Eugene, Springfield 541-913-3972	THE DALLES Columbia River Properties 541-296-1026	THE DALLES Columbia River Properties 541-296-1026
OLA Expert Realty LLC 208-365-9144	CANBY Equity Oregon Real Estate 503-706-1263	REDMOND John L. Scott 541-548-1712	WILSONVILLE Wolf Properties NW 503-682-1789	TEXAS DIMMITT Scott Land Co. 800-933-9698
TWIN FALLS Robert Jones Realty Inc. 208-733-0404	CHILOQUIN Crater Lake Realty 541-783-2759	ROSEBURG Hawks & Co Realtors 541-673-6499	WASHINGTON CHEHALIS Century 21 Land Realtors 360-748-8619	PASCO Farmers National Co. 509-539-3161
MONTANA MISSOULA Stelling Ranch & Land 406-728-9200	CORVALLIS Keller Williams Mid-Willamette 503-999-6777	SALEM Coldwell Banker Mountain West 503-939-7639	RIVERSIDE Farm & Ranch Broker NW 509-422-2102	TUMWATER Van Dorm Realty, Inc. 360-701-5345
BILLINGS Rocky Mtn. Ranch Real Estate 406-259-6666	CRANE Ken Thomas Real Estate 541-493-2776	SCIO Cadwell Realty Group 503-393-4611	WASHINGTON CHEHALIS Century 21 Land Realtors 360-748-8619	RIVERSIDE Farm & Ranch Broker NW 509-422-2102
NEVADA ELKO Allie Bear Realty 775-738-8534	DALLAS Keller Williams Realty Capital City, Cornerstone Team 503-580-7031	MCMINVILLE Berkshire Hathaway NH Real Estate Commercial Division 503-209-9591	WASHINGTON CHEHALIS Century 21 Land Realtors 360-748-8619	PASCO Farmers National Co. 509-539-3161
OREGON ALBANY Coldwell Banker Valley Brokers 541-928-6317	DAYVILLE Duke Warner Realty 541-987-2363	MEDFORD Oregon Opportunities 800-772-7284	WASHINGTON CHEHALIS Century 21 Land Realtors 360-748-8619	RIVERSIDE Farm & Ranch Broker NW 509-422-2102
ALBANY Keller Williams Farm & Ranch 541-979-0118	FALLS CITY Kelly Right Real Estate 971-388-7185	MEDICAL SPRINGS Agrilands Real Estate 541-853-1212	WASHINGTON CHEHALIS Century 21 Land Realtors 360-748-8619	PASCO Farmers National Co. 509-539-3161
AUMSVILLE RE/MAX Advantage Plus 503-245-9090	HERMISTON RE/MAX Cornerstone 541-289-5454	ONTARIO Tom Phillips Agency 541-889-8401	WASHINGTON CHEHALIS Century 21 Land Realtors 360-748-8619	RIVERSIDE Farm & Ranch Broker NW 509-422-2102
BAKER CITY Intermountain Realty 541-523-4434	INDEPENDENCE Berkshire Hathaway Home Services, REP 503-510-4366		WASHINGTON CHEHALIS Century 21 Land Realtors 360-748-8619	PASCO Farmers National Co. 509-539-3161

Directory Of Premium Agency Members!

Ken Thomas Ken Thomas Real Estate Boise, OR (541) 783-2759	John Knipe Knipe Land Company Boise, ID (208) 345-3163	Janey Knipe Knipe Land Company Boise, ID (208) 345-3163	Tom Gill Knipe Land Company Mountain Home, ID (208) 860-0776
Curtis Hitchcock Knipe Land Company Boise, ID (208) 866-2825	Mark Jones Robert Jones Realty Twin Falls, ID (208) 733-0404	Everett Decker John L. Scott Real Estate Redmond, OR (541) 480-8185	Donna Cave Silver Creek Realty Group Riggins, ID (208) 315-2888
Todd Longgood Whitney Land Co. Pendleton, OR (541) 278-4444	Jim Whitney Whitney Land Co. Pendleton, OR (541) 278-4444	Justin Peterson The Starbuck Group Redmond, OR (541) 510-1253	Alisha Wolfe Cadwell Realty Group Lebanon, OR (541) 936-2351
Greg Kuschnick Berkshire Hathaway Northwest Real Estate Lake Oswego, OR (503) 930-8002	Kelly McDonald Berkshire Hathaway NH Real Estate, Commercial Division McMinnville, OR (503) 209-9591	Brook Havens Cascade Sotheby's International Realty Bend, OR (541) 923-1376	Deb Elliott The Deb Elliott Group Pleasant Hill, OR (541) 913-3972
Lisa Johnson Horspower Real Estate Junction City, OR (541) 510-4601	Pam Mayo-Phillips Cascade Sotheby's International Realty Bend, OR (541) 923-1376	Sandy Bunyard RE/MAX Cornerstone Hermiston, OR (541) 289-5454	John Lee RE/MAX Advantage Plus Aumsville, OR (503) 245-9090
Flo Sayre Farmers National Company Pasco, WA (509) 539-3161	Judy Willis Real Estate Associates Joseph, OR (541) 432-4060	Ken Wick Real Estate Associates Joseph, OR (541) 432-4060	Scott Lamb Waldo Real Estate Ontario, OR (208) 739-2119
Dee Anne Mossman Waldo Real Estate (208) 707-4444	John Shelton Coldwell Banker Valley Broker Albany, OR (541) 981-0070	Darrell Johnson Coldwell Banker Valley Broker Albany, OR (503) 798-5005	Jeanne Peterson Coldwell Banker Mountain West, Salem, OR (503) 939-7639