

**210 Trucks**

2010 Peterbilt: Zero miles on rebuilt engine, new caps on drivers, \$38,500 OBO. Lakeview, OR. 541-285-7396



1988 Ford L9000 Semi Tractor. 190 K. ACTUAL MILES. 3406B Cat Diesel 410 HP. Fuller 8R Trans. PS&AC. Near new tires. Hendrickson spring rears. Former Dept. of Fire & Forestry vehicle. This truck is as clean as a new truck and drives and operates the same way, \$16,900. Located in Twin Falls Id. Call 208-613-0050



1998 International 4900: DT530E 8LLL transmission, rear trailer hitch, balloon box, 90% rubber, \$22,500. Sandy, OR. Call Pat 503-407-9062



International Vactor Truck: Cummins automatic, rear auxiliary motor, front fodder Vactor 2100, \$27,500. Sandy, OR. Call Pat: 503-407-9062



1995 International 4700 DT466 flatbed with crane. Runs nice, ready to work, \$12,500. Woodburn, OR. Call/text Trevor 971-806-5851



2005 GMC 5500 4x4 tanker truck: excellent running top kick truck with tank and apparatus, approx miles 115,000, \$32,500. Woodburn, OR. Call/ text Trevor 971-806-5851



1997 Ford F series flatbed truck: gear Products Inc crane with downriggers, propane fuel, GVWR 24 200 non CDL, tires 22-5x7.5, miles 181,153, tow hitch and tool boxes, \$10,000. Woodburn, OR. 971-806-5851



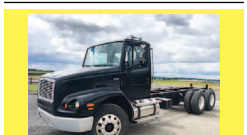
2007 Sterling tire service truck with crane: approx miles 253,000. Runs excellent, work ready, \$19,999. Woodburn, OR. Call/ text Trevor 971-806-5851



1993 International service truck with crane, everything fully operational. Runs excellent, ready to work, \$19,999. Woodburn, OR. Call/ text Trevor 971-806-5851



2006 Freightliner FL-70 service truck with crane: X railroad truck, approx miles 65,000. Runs nice, ready to work, \$27,500. Woodburn, OR. Call/ text Trevor 971-806-5851

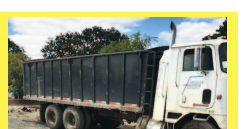


2004 Freightliner: FL112, CAT 350HP, automatic, 222" wheelbase, 20,000 original miles, ex-government, clean truck, \$44,500. Gresham, OR. Tim 503-719-2545



1976 Ford Lt 9000 10 Wheeler: 20ft bed, PTO, hydraulics, 8V71 Detroit 13 speed, 410 rear end good tires, \$5000 OBO. 208-308-9462

**210 Trucks**



1986 International: 350 Cummins, 24' box. Very dependable silage truck, \$20,000. Salem, OR. 503-580-7797



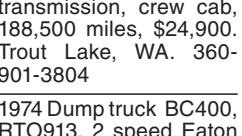
1974 GMC: perfect 24' box & hoist, truck- not so much, \$5,500. Salem, OR. 503-580-7797



1991 White/GMC T/A with 28,000 lb. National 600B Crane with 57ft. sheave height. Heel winch. Anti-2 block system. 5 hydraulic outriggers. Dual controls. Cummins L-10 Diesel with Allison auto transmission, 2 speed rears, PS, AC and 90% rubber. 46,000 ACTUAL MILES. Former Municipal one owner truck that has been well maintained and is ready to work, \$23,900. Located in Twin Falls Idaho. Call 208-613-0050



2007 GMC 3500 dually, 4 WD, pro-tech aluminum flatbed, diesel Allison transmission, crew cab, 188,500 miles, \$24,900. Trout Lake, WA. 360-901-3804



1974 Dump truck BC400, RTO913, 2 speed Eaton rear, All work well. Used as farm truck and small construction company, \$12,000. Canby, OR. 503-939-0651



1991 Volvo, Cat 3406B, 13 speed, \$5000. Mesa, WA. 509-531-3905



2012 International Transtar 8600SBA: 28' high cube van, 430 hp, diesel, auto, air ride, 272" WB. 678k miles. DOT inspection, California certified clean idle. Just serviced, well maintained, \$16,750. Medford, OR. Gary 541-944-6341



1969 Ford 1 ton: 34,600 miles, 300 engine, AT, new tires, well maintained, 12' flat bed-strong hoist & stock racks, \$2300. Clarkston, WA. 208-791-5013

1984 International C85: single axle, 5/2 speed, 466 diesel, 18' bed and hoist, air brakes, rollover tarp, \$6000. Hillsboro, OR. 503-939-4144, 503-516-4446

**CLASS 8 TRUCKS**

509-534-9088 • SPOKANE, WA  
Answering machine after hours



2005 Kenworth T800 Cummins ISX  
13 spd, 3.90 ratio, 244" WB, drop axle 10' spread  
**\$34,900**



\* Inexpensive Work Truck \*  
1991 Volvo Tandem Day Cab  
Detroit 560, 9 speed. Clean, old truck.  
**\$9,900**



1998 International 4700  
Fresh overhaul, 14' bed, 7 spd, "9+10" truck!  
**\$16,900**



Day Cab Tandem  
2004 Freightliner  
Columbia 14.0, 10 spd  
Call For Pricing



Older Kenworth W-923  
Dump Truck. 335 Cummins & 13-Spd. Full-Size Dump Box & Power Liftgate.....  
**\$10,900**



2004 Ford F-550 Dump Truck. 12' Dump Bed. 19,000 # G.V.W. 6.0L P.S. Diesel & A/T.....  
**\$16,900**



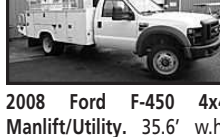
International 4700 Box Truck. 18' Box, 1,250 # Lift-gate. Curb-side door. 7.3L Diesel & A/T.....  
**\$6,900**



2013 Ford F-150 Crew-Cab with 6' Bed. 5.0L V-8 & A/T.....  
**\$13,900**



2000 International Mod 470. Manlift/Utility. 45' w.h. 6 Kw Gen-set. 7.3L Diesel & Allison A/T.....  
**\$14,900**



2008 Ford F-450 4x4 Manlift/Utility. 35.6' w.h. 6.8L V-10 & A/T.....  
**\$25,900**



2006 Ford F-350 4x4 Extracab. 8' Bed. 6.0L P.S. Diesel & A/T.....  
**\$8,900**



2008 Jeep Wrangler. Neither Snow Nor Rain... Right-Hand Drive 4x4. 3.8 L V-6 & A/T.....  
**\$9,500**



2008 M-2 Freightliner. 7-Ton National Articulated Crane. M/B 12.8L @350 h.p. Diesel & 8 Lo-Lo.....  
**\$45,000**

**ChambersMotorCo.com**  
(503) 663-7200 • Boring, OR

**210 Trucks**



1986 International 4300 Eagle, 22' bed, 4' removable sides, near new hoist, drill fill auger and tarp. 6V92T engine, 13 speed transmission, new paint, \$13,900. Oregon City, OR. 503-719-3460

**210 Trucks**



1963 Chevrolet Truck: 60 Series, 16' steel bed with twin cylinder hoist. 6 cylinder 292 engine, 4 speed transmission, 2 speed axle, tilt cab and grain sides, \$3750 OBO. Woodburn, OR. 503-989-0512

**210 Trucks**



2001 Dodge 1 ton Dually: single cab, 6 speed diesel, aluminum flatbed 5th wheel hitch, tool boxes, air bags, power leather bucket seats, 87,000 original miles, \$29,750. Clatskanie, OR. 503-728-3562

**210 Trucks**



2010 Prostar ISX: 10 speed, 150k on in-frame, 230" wb, wet kit, low pro 22.5, \$33,000. Salem, OR. 503-580-7797

1998 T800 tandem truck with 24' flatbed, Cummins, 10 speed, aluminum wheels, under 400,000 miles, \$25,000. Silverton, OR. 503-932-0766

**We Are The Best Darn Diesel Shop In Oregon! COME IN AND SEE WHY!**

And We Absolutely, Positively Have The Best Remanufactured Engines Available Anywhere!  
Huge Inventory • Expert Technical Assistance

**GAS ENGINES**

CHEVROLET	FORD
4.3.....\$1,395	4.6-5.4.....\$2,699
350.....\$1,395	300.....\$1,595
454.....\$1,699	289-302-351.....\$1,695
CHRYSLER & JEEP	360-390.....\$1,795
4.0-4.2.....\$1,595	460.....\$1,695
318-360.....\$1,695	415-V10.....\$3,195
488-V10.....\$2,995	FOREIGN
	Toyota 22RE.....\$1,295
	Toyota 3.0 V6.....\$1,899

Call for other gas engines not listed

**HI TECK DIESEL L/B ENGINES**

DODGE CUMMINS	FORD
3.9-48T.....\$3,395	6.0 P/S.....\$4,495
5.9 12V.....\$3,495	6.4 P/S.....\$5,495
5.9 24V.....\$3,695	6.7 P/S.....\$6,595
5.9 24V C/R.....\$3,895	6.9 - 7.3 IDI.....\$3,795
'03 & up.....\$3,895	7.3 P/S.....\$3,895
6.7 C/R.....\$4,395	6.2/6.5T.....\$3,495
	6.6 Duramax.....\$4,695

All engines come with 100,000 mile warranty depending on application.

**We Service and Repair All Rubber-Tired Equipment.**

**Now Rebuilding Thermo King & Carrier diesel Engine Units. Best Prices! Give Us a Call!**

**Machine Shop NOW OPEN TO PUBLIC! Best Prices on Engine Parts!**

Call on other diesel engines; we are a major rebuilder on all diesel brands. All work done in house!

**PROFESSIONAL REMOVAL & INSTALLATION AVAILABLE**

Having problems with your Ford 6.0 P/S, 6.4 P/S, 6.7 P/S or 5.9 & 6.7 Cummins Head Gaskets failing? **WE DON'T.** We have the Secret to Success of **NO More Failures.** Give Us A Call! If Our Premium Head Gasket Job Ever Fails, We Will Redo It, Labor Free.

**R & G MACHINING AND ENGINE PARTS COMPLETE DIESEL MACHINE SHOP AND TRUCK REPAIR**  
MULINO, OREGON • SHOP: 503-829-6038

**NEW LOCATION!**  
5000 NE Columbia Blvd  
Portland, Oregon  
**(503) 288-1118**  
www.oregontruckcenterinc.com



2007 Freightliner M2-106 Single Axle Tractor, Cat C-7 250 hp, Allison auto, 236k miles, aluminum wheels, Stk#5761.....Please call



1994 Peterbilt 362 108" cabover sleeper, cat 3176, 13 spd, 24'x96" flatbed, 28' pup trailer available below on ww trailers ad,stk# t-4349.....  
**\$18,500**



2006 Isuzu Npr-hd 16' Reamer, 127,738 miles, diesel, automatic, thermoking reefer w/electric stand-by, tuck-away lift-gate, stk#5824.....



2007 Gmc W5500 16' Flatbed, 214k miles, 16'x96" flatbed w/stake sides and a roll-up tarp, stk#582 .....  
**\$21,750**



2007 Isuzu Npr-hd 16' Reefer, 120,400 miles, diesel, automatic, carrier supre 650 reefer unit, tuck-away lift-gate, stk#5823.....



1997 Freightliner FL70, Cummins 8.3l, 6 spd manual, 246k mi, 26k GVW NON-CDL, 20' aluminum dry box, tuck-away lift-gate, very clean and well maintained, runs and drives great, Stk#5804.....

**WW TRAILERS INC.**  
5000 NE Columbia Blvd., Portland, OR 97218  
**(503) 821-6000**  
www.wwtrailers.us

NEW CPS 3-axle Belly Dump with Tarp..... Please call

(2) 2003 Reliance 28' Pull Trailers. Turntables with adjustable tongues, aluminum wheels.....Please call

1985 Fruehauf 20' tandem axle pull trailer with turntable..... Please Call

**POWER FLEET & COMMERCIAL SALES**

**Jim Church FLEET MANAGER**  
Phone: 503-769-7100  
Cell: 503-910-7784  
jjmc@powerautogroup.com

**Phil Fitzner FLEET MANAGER**  
Phone: 503-769-7100  
Cell: 503-551-4491  
pfitzner@powerautogroup.com



**POWER FLEET - COMMERCIAL**  
WWW.POWERAUTOGROUP.COM

**KELLEY EQUIPMENT SALES**



#658 International, 3750 gal. Water Truck **SPECIAL PRICING** #653 2007 International, 2000 gal.



#649 INTERNATIONAL, 10/12 Yd Dump, Drop Axle, Cummins Pwr, 15 Spd. Nice Truck! **PRICE CALL** #651 Internation, 4900 Series, 3750 gal. Call

**gjkelly@q.com | 541-215-5193**

**LOVELL Truck Sales**



2011 Kenworth T370 3-Axle, Cummins 8.3 Allison Auto, will accept a PTO, 273" WB, PS, AC, exhaust brakes. Can remove box.....  
**\$35,500**



2004 Mack 3-Axle Day Cab, Mack engine 10 speed, PS, AC, cruise control, engine brake, 249k miles....  
**\$17,500**



2009 International 4300 cold plate with a reefer elec. standby, automatic transmission.....  
**\$18,500**



2004 Freightliner, 3 axle, day cab, series 60 Detroit, 10 speed, engine brake, 179" WB, PS, AC, cruise control, air slide 5th wheel, low miles Starting at  
**\$18,500**



2007 Mack CV713 Material Handler Hiab 355K, remote control, Mack AMI-370 engine, 10 speed, 18k front axle, camelback suspension, PS, AC, cruise control, 276" WB, trailer package, pintle hitch, lift axle. Very clean truck.....  
**\$49,500**



1998 Kenworth W-900 Long Hood CAT 3406e 475HP, Fuller 10 speed, DS-404, air ride suspension, engine brake, air slide 5th wheel, dump valve, 70" mid roof sleeper.....  
**\$24,500**



2003 Mack RD688 4-Axle 24' Flatbed, 18,000 lb. front axle, Mack AI-350, 10 speed, camelback suspension, low miles. Can remove roofing conveyor, Princeton hookup.....  
**\$24,500**



2005-2006 Mack CV713 Granite, 3-axle flatbed, 20,000 lbs. front axle, Mack AMI engine, 10 speed, camelback suspension, 264" WB, engine brake, Princeton hookup.....  
**\$35,500**



2009 Hino 20' Reefer Box, Diesel engine, automatic transmission, PS, AC, cruise control, lift gate.....  
**\$16,500**



2005 Freightliner PB50 Forklift, CAT diesel, AWD, lift, tilt, side shift, 5,000 lb. capacity.....  
**\$24,500**



(4) 2011-2012 Freightliner Cascadia 3-Axle Day Cabs, Detroit Series 60, 10 speed, engine brake, PS, AC, cruise control, power windows and locks, air slide 5th wheel, miles from 280K-543K..... Starting at  
**\$31,500**



2006 Ford F-650 Crew Cab Cummins 5.9, Auto Transmission, 26,000 GVW, 16' Flat Bed.....  
**\$19,500**

**1-800-451-0012**  
(503) 266-5886 • FAX (503) 266-6903  
**LOVELLTRUCKSALES.COM**  
680 SW 1st Ave (Hwy 99 East), Canby, OR

**COMING IN THIS WEEK**

2008 Peterbilt 389 3-axle Day Cab, Cummins ISL 13 speed.

2004 Dodge Ram: heavy duty SLT2500, 5.9 liter diesel, crew cab, 4x4, 158,000 miles, \$14,500. Possible trade. Sandy, OR. 503-668-7512. or text 971-998-5770

2001 Ford F350: Extra Cab, 7.3 diesel, 6 speed. Alcoa 19.5 wheels, Kna-phiede wide body, gas and diesel tank, light bar. 3 plus, 1 generator, welder air compressor. Near new truck. Runs. Rive excellent, cruise, a/c, rubber floor mat, stainless exhaust, \$27,500 Sandy, OR. Pat 503-407-9062

2006 Dodge 1 Ton Dually: diesel, 6- speed, 4WD, single cab, low miles, air bags. Very good condition. Southwest WA. 360-921-9111

4x4 Japanese Mini Trucks: Honda, Suzuki and others. Truck capability, quad maneuverability. Dump available. Starting at \$3995. Portland, OR. 503-805-2684 oregondieselimports.com

**216 Vans**



2013 Chrysler Town & County, 33,528 miles, \$20,000 negotiable. Merrill, OR. 503-801-3922 cathymcgilvray1948@gmail.com

**219 ATVs/Motorcycles**



4x4 Japanese Mini Trucks: Honda, Suzuki and others. Truck capability, quad maneuverability. Dump available. Starting at \$3995. Portland, OR. 503-805-2684 oregondieselimports.com