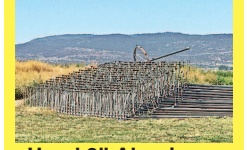


**887 Irrigation Equip.**

**Pivots:** Good, various lengths, all brands & late models. No rust. Plus buried wire. Call Keizer, OR. Cell 503-881-3232, 503-390-3210



(6) 316 SS Gould Pumps: with 250 HP motor, 1625 GPM, 300 ft.hd., excellent condition, \$14,950 each. Hermiston, OR. 541-571-0514 email: 53hchull@gmail.com



**Used 3" Aluminum Sprinklers**  
(1018) 3"x40" Travis Drop- Lock with 30" riser and #30 EP Rainbird sprinkler with 7/64" nozzle. (17) 4"x3"x3" VOT. (34) Drop- Lock end plugs. Enough to irrigate 60 acres, \$40,000. Negotiable. Merrill, OR. 503-801-3922 cathycomgilvray1948@gmail.com

**30HP Cornell Irrigation Pump:** excellent condition, like new, \$3700. Amboy, WA. 360-606-6348

6" 160 PSI Rated Gasketed PVC pipe in 20' pieces: (140) total pieces available, \$60 per piece. Canby, OR. 503-263-4040

**IRRIGATION EQUIPMENT BOUGHT. SOLD. RENTAL.**  
Design of Effluent Handling Systems - Gates, Valves & Aerators  
New & Used Parts.  
• Aluminum Pipe  
• Certalok  
• Siphon Tubes • HDPE  
• Sand Media Filters  
• Wheel Lines • Pumps

Office: (209) 460-0450  
Fax: (209) 982-1832  
www.pacsouthwestirrig.com  
Carlos (209) 481-7677  
Jim (209) 986-0099  
31-2-3102

**890 Packing/Processing Eq.**

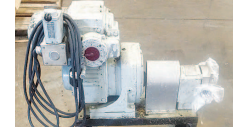
**Wanted:** Complete Line Pellet Mill, all or portion. Call 541-281-4500



**PUMP & TANK:** Viking 4125 Rotary 2" pump with 7.5 HP 230/460v 3ph motor, Viking helical gear reduction drive, and pressure relief valve, \$1,500. 5000 gallon round vertical carbon steel tank with food grade coating for liquids. Sloped bottom, center discharge outlet. 18" Tall x 10" Diameter \$3,500. Both for \$4250. Eugene, OR. Contact Julie Crooks 541-689-0913



Pacer 2" Centrifugal pump Model SE2EL D2 OC with 2hp 208-230/460 volt motor on portable cart, \$200. Eugene, OR. Contact Julie Crooks 541-689-0913



St Regis 2R positive displacement pump with Sterling 1/2 hp variable speed motor & gear reducer, 220/440 volt, forward and reverse controls. Some parts missing, \$400. Eugene, OR. Contact Julie Crooks 541-689-0913

Globe Commercial Meat Slicer Model 3600, 110VAC, \$1295. Fairbanks platform scale, 500 lb capacity, \$250. F. Dick 12 liter sausage stuffer, \$1,050. Heavy Duty (12 gauge) stainless steel stock pots with lids. All 10" diameter, 3.5 gallon, \$50, 5.0 gallon, \$75, 5.5 gallon, \$85. Washtucna, WA. 509-431-8061

**893 Logging Equip.**

**D4H Hi-track drum and stationary grapple,** excellent motor and tracks \$65,000. Banks, OR. 503-324-4006

**HD5 blade with rake,** excellent, \$5995. Also older front end pay loader. Banks, OR. 503-324-4006

**CAT D4-7U:** direct start, fresh engine, new tracks, free spool winch, \$9800. D4D Logger: fresh motor, Johnson bar, \$18,000. Buxton, OR. 503-324-3305

**894 Sawmill Equip.**

Sale: NEW 42" bandsaw mill, carriage only, no engine, no track, no clutch, \$3950. Mention this ad. Myrtle Point, OR. 541-572-2445 burlbandsawmills.com



**WANTED**  
Mobil Dimension Sawmill, Model 128 with 20' length cutting ability. 541-729-6972

**896 Forklifts**

Older CAT 5000 lb Forklift, solid tires, new brakes and cylinders, side shift, \$5000 OBO. Goldendale, WA. 509-773-5598



2006 Hyster H190HD: 13,000 hours, replaced transmission, Cummins turbo diesel, Monotrol, 212" upright, 2 stage, side shift, 8ft and 4ft forks, air brakes, \$28,000 Can deliver in Oregon or 200 mile radius. Gaston, OR. 503-789-3726

**IF YOU HAVE A BEEF -** sell it in next week's Capital Press!

**Used Lift Trucks**

Also New & Used Parts All sizes, makes & prices

**LIFT TRUCK SERVICE**

888-890-1450  
forkliftsales.com  
Ellensburg, WA  
31-5-2104

**899 Heavy & Indust. Eq.**

Boiler: 105 hp, weighs 5000 lbs, 10'x3-1/2', burns diesel, propane or natural gas, used for 2-1/2 years. New cost \$35,000, will deliver \$9500. Mead, WA. 509-238-4682, 509-238-6539



Gehl 552 4x4 Reach Forklift, 5500 Lb 25' height, 4' Forks & 8' Bucket, low hours \$29,000. Tualatin 503-260-0303



**•For Rent•**  
CAT 304 Mini Excavators Buckets included. Competitive Rates. Free Delivery in the Salem, OR. Area. Call Rick at 503-931-8679 ostrom12@comcast.net

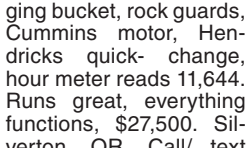
**REPLACEMENT DECAL SETS**

Construction, Forestry & Ag Equipment. Fast, Knowledgeable, Reliable Service. 215-536-5339 email: info@CustomServicesCompany.com

Thousands of sets, Old & New, in our digital. www.QuipCal.com



1997 Kobelco Mark 4 sk120 LC hydraulic excavator: currently on job working thumb, 24" digging bucket, rock guards, Cummins motor, Hendricks quick-change, hour meter reads 11,644. Runs great, everything functions, \$27,500. Silverton, OR. Call/ text Trevor 971-806-5851



**D6H Series II Cat Dozer** 1991. 90% tracks and undercarriage. Rippers and brush rake. \$72,500. McArthur, CA. 530-299-3318



**CAT 623-B:** Self-loading scraper, good condition, Reduced \$33,500. Salem, OR. 503-362-3055



**C.E.C. ROAD RUNNER SCREEN PLANT**  
100% self-contained....\$25,000



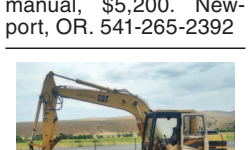
**NORDBERG STACKING CONVEYOR**  
36" X 50' .....\$10,900 \$8,500



**PUGMILL.....\$65,000**  
**CALL 541-782-2201**  
Ask for Lindsay • Oakridge, Oregon

**899 Heavy & Indust. Eq.**

**LOOK!**  
1956 John Deere Crawler Model 40: with dozer blade and service manual, \$5,200. Newport, OR. 541-265-2392



**D-6 H U-dozer** with tilt and ripper, near new engine and hydraulic pump, \$86,500. Salem, OR. 503-362-3055

2012 Takeuchi TB138FR: thumb, quick change, two buckets, rubber tracks, blade, ROPS, \$25,950. Sandy, OR. Call Pat 503-407-9062



Yanmar VIO75: 2005, 4400 hours, 50" muck bucket, 24" ripper bucket, ripper tooth, almost new tracks, excellent condition, \$35,000. Powell Butte, OR. 541-771-8383, 503-939-1814



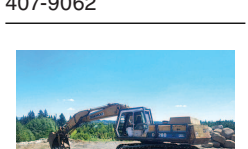
2004 American-Lincoln 3366 lot or warehouse sweeper. Propane. 2000 actual hours. Enclosed cab with heat. New brushes and tires. Very clean former municipal machine, \$8900. Located in Twin Falls ID. Call 208-613-0050



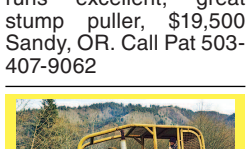
CAT D3B Dozer: 6 way blade, ripper, good undercarriage, new brakes, \$17,500. Granger, WA. 509-930-4130



Hitachi Zaxis 120: 3 bucket, hydraulic coupler, thumb, \$37,500. Sandy, OR. Call Pat 503-407-9062



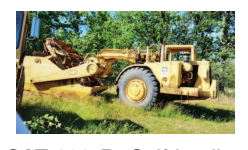
Daewoo 280: thumb, runs excellent, great stump puller, \$19,500. Sandy, OR. Call Pat 503-407-9062



1955 D8 cat crawler with hydraulic blade. Pony motor replaced with direct drive starter, \$8,000. Yamhill, OR. 503-550-0003

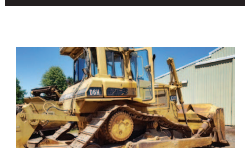


**D6H Series II Cat Dozer** 1991. 90% tracks and undercarriage. Rippers and brush rake. \$72,500. McArthur, CA. 530-299-3318



**CAT 623-B:** Self-loading scraper, good condition, Reduced \$33,500. Salem, OR. 503-362-3055

**899 Heavy & Indust. Eq.**



2005 CASE CX130: 2 buckets, thumb, Hendrix quick coupler, 7000 hours, \$42,500. Sandy, OR. Call Pat 503-407-9062

**CAT 924G loader,** quick-coupler bucket, 18,000 hours, \$45,000 OBO. Terrebonne, OR. 541-699-2242

**902 Farm Equip. Parts**

**ASSOCIATED TRACTOR SERVICE INC.**  
NEW • USED • REBUILT PARTS PARTS • SERVICE • EQUIPMENT  
Satisfaction Guaranteed Since 1954  
PARTS ★ SERVICE ★ EQUIPMENT

- Used Parts National Locator Services
- BEGE Hydraulic Pumps & Parts

**CALL NOW & CHECK OUT OUR INVENTORY**

(800) 735-1301 • (209) 466-3003  
1323 W. Charter Way, Stockton, CA 95206-1110

**BIG TRACTOR PARTS, INC.**

~ GEARED FOR THE FUTURE ~  
**STEIGER TRACTOR SPECIALIST**

- 1. We are your source for new & used Steiger drivetrain parts Series 1 - 9300 Series.
- 2. We rebuild Spicer manual transmissions, Fugi power shift transmissions, dropboxes & axle with ONE YEAR WARRANTY!
- 3. We now rebuild computer control boxes for Steiger tractors 1982-1999.

**800-982-1769**  
www.bigtractorparts.com

**NEW, USED, AND REMAN PARTS**

**TOLL FREE: 1-877-928-1646**  
FARMLAND • 32427 OLD HWY 34, TANGENT, OR 97389

Reman Engines for Case/IH, John Deere, and Ford

Seats w/Air Suspension \$1,025  
Combine Parts  
JD 4010, 4020 Clutch Kits \$715  
A/C Components

**Farmland Tractor Supply**  
Parts@Farmlandtractor.com

**COMBINE HEAVEN**

**R.I.P.**  
Reasonable Implement Pricing  
See Our Combine Dance on YouTube

**FRESH IN FOR PARTS ONLY**

**RECENT ARRIVALS**  
(3) IH 2188 • IH 1688 4x4  
JD 8820 II  
JD 9610 • (2) JD 9600 HILLSIDES

JD	NH
CTS	TR 96
9660 STS	TR 95
9610	TR 85
9600	TR 75
9500	TR 70
9400	
8820	<b>IH</b>
8820 II	2188
7720	1688
7700	1680
6622	1666
6620	1660
6602	1480
6600	1460
6600SH	1440
4400	915
105	815
95EB	715
95 Late	403
95 Hillside	

**LOTS OF TRACTORS AND IMPLEMENTS TOO!**  
**Nyssa Tractor & Implement**  
Celebrating 22 years in the agricultural machinery business.  
Our yard has 1/2 miles of road, with machinery on both sides.  
FREE TOURS GIVEN DAILY.  
Call Toll Free: (888) 372-4020  
www.nyssatractor.com  
sales@nyssatractor.com  
Nyssa, OR

**899 Heavy & Indust. Eq.**

2005 CASE CX130: 2 buckets, thumb, Hendrix quick coupler, 7000 hours, \$42,500. Sandy, OR. Call Pat 503-407-9062

**CAT 924G loader,** quick-coupler bucket, 18,000 hours, \$45,000 OBO. Terrebonne, OR. 541-699-2242

**CASE INDUSTRIAL PARTS**  
We sell genuine, after market, and used CASE parts at discount prices nationwide. Call For Free Catalog.

**902 Farm Equip. Parts**

1949 Allis Chalmers G: fully restored, with Budging basket weeder, front plow, 2 gang spider weeder and miscellaneous, \$6000. Winlock, WA. 360-785-4576

Tractor drawn one way disk plow, usable, \$400 OBO. 503-394-2752. Scio, OR. 503-394-2752

Antique 10ft light metal brake. Some wood framing, \$250. Lynden, WA. 360-988-5184

**907 Nursery Equip. & Supplies**

**USED NURSERY CONTAINERS:** Used, but reusable nursery containers. All sizes. Inventory changes daily. Call for current availability and prices. Sawyer Farms, Scio OR. 503-769-3417, juddsfarm@vwi.com (also wanted: used containers)

**FRESH SAWDUST:** Consistently fair pricing. Forest-Grove, OR. For pricing call 503-849-0216

**908 Garden, Turf, Yard Equip.**

(2) Lawn mowers, excellent condition, \$85 & \$125. Nampa, ID. 208-850-2400



Yanmar 2 row binder model YB650 walk behind harvester for small grain plots, \$1000. Wilits, CA. 707-459-2643

**BEST SELLERS ...**  
"...Sold everything in the herd but a couple of old bulls."  
Kester Ranch, Cottage Grove, OR  
Call 1-800-882-6789 and sell too!

**COUNTRY VALUES. BIG CITY RESULTS.**

**Ag in the west news delivered in print or online.**

**Excellent 2014 ReCon300 Hay Conditioner.** Perfect to shorten drying days! \$17,500. La Grande, OR. 541-805-9622

9240 Hesston 2005 Swather: 14' head, \$25,000. Hesston 1365: pull type, rotary, 15" swather, \$12,500 OBO. 8585 Case IH 3x4 Baler: excellent shape, 35k bales, recent rebuild, \$34,500 OBO. Allen 8803 Rake: 5 function electric control, \$10,500. Deer Park, WA. 509-994-9520

New Holland BC 5080: 16 x 18, 2 tie baler, \$22,000 OBO. Valley, WA. 509-868-7013

580 New Holland: 16 x 18, 2 tie baler, \$20,000 OBO. Valley, WA. 509-868-7013

2014 Allen 8803 Rake: Serial #13001. Field Ready, Electronic Controls, Under 100 hours, like new, ready to go to work. \$18,000 OBO. Greenville, CA. 530-592-9798

CAT V180 Hay Squeeze: Sunny D clamp, Ford V8, runs good, \$18,000. Silverlake, OR. 541-576-2552

**BALE WAGONS:** Rebuilt New Holland 1085 bale wagon, sharp, \$57,500. 2007 New Holland BW28 bale wagon, \$90,000. Rebuilt 1988 New Holland NH1068 bale wagon, very sharp, \$47,500. Rebuilt New Holland 1079 bale wagon, \$70,000. New Holland 1075 gas unit, \$26,000. Sod Buster Sales, Polson, MT. 406-883-2118

1983 Manteca hay squeeze, 350 Cummins, automatic, \$55,000. 1997 Utility 28"6" pull trailer, with aluminum wheels, 2.55x2.55 tires, sliding drawbar, \$10,500. Bieber, CA. Steve, 530-640-1887

2014 New Holland 216 Rakes: \$22,000 OBO. Valley, WA. 509-868-7013

John Deere 457: round baler, 4x5, twine wrap, \$15,000 OBO. Valley, WA. 509-868-7013

2014 New Holland 216 Rakes: \$22,000 OBO. Valley, WA. 509-868-7013

**New And Used Parts:** for all models New Holland bale wagons. Largest inventory in North America. Sod Busters Sales, Polson, MT. 877-735-2108 or 406-883-2118

**Used New Holland BW28 bale wagon,** excellent condition, 1 owner, \$85,000. (2) New Holland B990 balers, \$14,500 each. (1) New Holland B990, 592 hours, excellent condition, \$27,000. Woodburn, OR. Greg Wilmes 503-969-8705

**IF YOU HAVE A BEEF -** sell it in next week's Capital Press!

**902 Farm Equip. Parts**

Starters, alternators, and generators. Call 503-364-3650 or visit Walz's Rebuilt - 348 Market St. NE., Salem, OR.

**905 Antique Farm Eq. & Parts**

77 Oliver tractor. Massey Ferguson 124 baler, \$2600 & MORE. Saint Paul, OR. 503-341-2235



1949 Allis Chalmers G: fully restored, with Budging basket weeder, front plow, 2 gang spider weeder and miscellaneous, \$6000. Winlock, WA. 360-785-4576

Tractor drawn one way disk plow, usable, \$400 OBO. 503-394-2752. Scio, OR. 503-394-2752

Antique 10ft light metal brake. Some wood framing, \$250. Lynden, WA. 360-988-5184

**USED NURSERY CONTAINERS:** Used, but reusable nursery containers. All sizes. Inventory changes daily. Call for current availability and prices. Sawyer Farms, Scio OR. 503-769-3417, juddsfarm@vwi.com (also wanted: used containers)

**FRESH SAWDUST:** Consistently fair pricing. Forest-Grove, OR. For pricing call 503-849-0216

**908 Garden, Turf, Yard Equip.**

(2) Lawn mowers, excellent condition, \$85 & \$125. Nampa, ID. 208-850-2400



Yanmar 2 row binder model YB650 walk behind harvester for small grain plots, \$1000. Wilits, CA. 707-459-2643

**BEST SELLERS ...**  
"...Sold everything in the herd but a couple of old bulls."  
Kester Ranch, Cottage Grove, OR  
Call 1-800-882-6789 and sell too!

**NH1033 field ready.** Mods for faster bale pickup and full load indicator. Full remote operation from cab, \$8,500. Stayton, OR. 503-559-5966

2015 H&S AR1261 hay rake, excellent condition, \$7000. Bonanza, OR. 541-892-5682

**2013 Road Runner hay squeeze, 3 stage mast.** 405-762-2815  
www.customhaysqueeze.com

**Hay feeding wagon,** fits 4 large bales, highway usable, \$1200. Cattle Squeeze Chute: manual, \$850. Oregon City, OR. 503-655-6466

New Holland Baler, BR9060, 2012, 3x3 bales, stored inside. Excellent condition, \$43,900. Redmond, OR. 503-704-2195

2013 Golden Eagle 16 Wheel Hay Rake. Full electric hydraulic functions, works excellent on alfalfa or grass, \$8,000. Wapato, WA. 253-318-9487

2014 Allen 8803 Rake: Serial #13001. Field Ready, Electronic Controls, Under 100 hours, like new, ready to go to work. \$18,000 OBO. Greenville, CA. 530-592-9798

CAT V180 Hay Squeeze: Sunny D clamp, Ford V8, runs good, \$18,000. Silverlake, OR. 541-576-2552

**BALE WAGONS:** Rebuilt New Holland 1085 bale wagon, sharp, \$57,500. 2007 New Holland BW28 bale wagon, \$90,000. Rebuilt 1988 New Holland NH1068 bale wagon, very sharp, \$47,500. Rebuilt New Holland 1079 bale wagon, \$70,000. New Holland 1075 gas unit, \$26,000. Sod Buster Sales, Polson, MT. 406-883-2118

1983 Manteca hay squeeze, 350 Cummins, automatic, \$55,000