

THE CAPITAL PRESS SALES TEAM IS HERE TO SERVE YOU!

- Real knowledge
- Real people
- Real results!



Greg Hains
National Accounts,
California, W Nevada
1-800-882-6789
ghains@capitalpress.com



Carl Bamford
S Willamette Valley
SW & Central Oregon
(541) 521-9008
cbamford@capitalpress.com



Stefani Evers
NW Oregon,
N Willamette Valley
(503) 871-7957
severs@capitalpress.com



Stacey Righter
Portland (Eastside),
Columbia River
Gorge &
W Washington
(503) 871-7956
srighter@capitalpress.com



Laine Barth
E Washington
N Idaho
509-319-0743
lbarth@capitalpress.com



JoAnn Vanderwey
SW Idaho,
NE Nevada
& SE Oregon
(208) 880-4334
jvanderwey@capitalpress.com

DEADLINE FOR CLASSIFIED DISPLAY ADS:
Weds. @ 10AM
503-364-4798
FAX 503-364-2692

DEADLINE FOR CLASSIFIED LINE ADS:
Weds. @ Noon
503-364-4431
FAX 503-370-4383

Capital Press
The West's Ag Weekly
1-800-882-6789
CapitalPress.com

805 Farm Buildings

Martin Cisneros Pole Buildings & Concrete: Shops, garages, arenas, hay storage. Agriculture/ Residential, additions and repairs. Serving Oregon CCB# 135771. Licensed, bonded and insured. Excellent references. 503-375-9273 or 503-507-2847

821 Christmas Trees



Hello, We are a local family looking to buy your Christmas Trees. Need approx 3000 Noble and Nordmann Fir. Thank you. 503-880-5820

Attention Christmas Tree Growers: Complete management services available. Planting, cultivation and harvesting. Also, sales available. High quality work, Licensed and bonded, backed by 50 years experience, BTN of Salem, OR. 503-881-8610



Christmas Trees Wanted: Noble Fir, Nordmann, Grand Fir, Natural Noble Fir for boughs and Christmas Trees. CASH PAID. Will maintain and harvest. Portland, OR. 503-975-8733

Cash Paid. Top Prices. Christmas Tree Fields. Any Condition. Oregon, Washington. 503-873-6774, 503-551-5809

Wanted: 3000 Noble, 6'-7', 7'-8', 3000 Nordmann, 6'-7', 7'-8', 500 Natural Noble up to 10', Cash paid. Will maintain and harvest. Vancouver WA. 360-513-7822

Greenbriar Ag Management Offering Professional Christmas Tree Services: Experienced, quality work, planting through harvesting, stump grinding. Sales, brokering, licensed & bonded contractor. Farm & Forest Labor License #10628 Stayton, OR. 503-932-2323
greenagmngt@wvi.com

Buyer - Looking for 2 truckloads of large 9'-15' NOBLE, GRAND and NORDMAN. No problem picking up some other smaller types to sweeten the deal. Have own trucking. 858-344-0979

1-800-882-6789
CapitalPress.com

822 Nursey Stock - Plants



Last Call

Plan Ahead To Be Late.

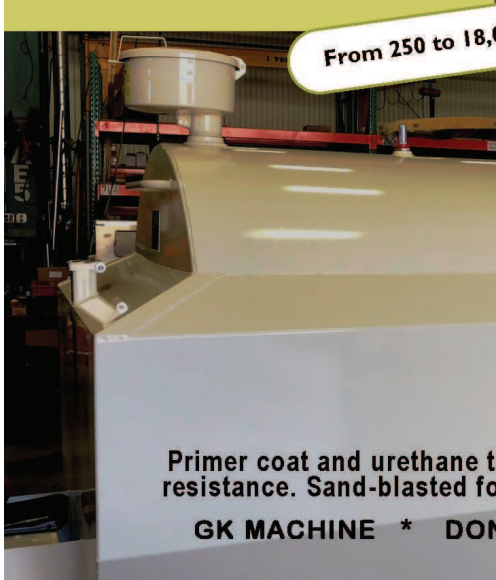
FALL CREEK
FARM & NURSERY, INC.
1.800.538.3001 | www.fallcreeknursery.com

875 Tanks & Storage



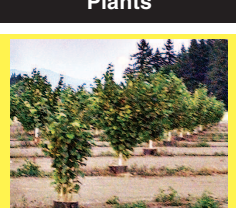
FUEL TANKS WITH SECONDARY CONTAINMENT NOW UL142 LISTED!

- ▶ Affordable, turn-key above ground steel fuel storage tanks from 250 gallons up to 18,000 gallons.
- ▶ UL 142 listed for Aboveground Flammable and Combustible Liquids.
- ▶ Best quality fuel storage tanks and split tanks for diesel, gasoline, bio-diesel, ethanol or oil.



Primer coat and urethane top coat for maximum corrosion resistance. Sand-blasted for additional weather protection.
GK MACHINE * DONALD OR * 503-678-5525

822 Nursey Stock - Plants



Jefferson Hazelnut Trees: We are currently taking orders for Jefferson hazelnut starts. They will be ready this December-January we have Eta and Theta pollinators also. Trees will be \$5 each for Jefferson and \$6 each for the pollinators. Lebanon, OR. Call or text Tim 541-409-6751

Blueberry farm downsizing: 6 varieties, over 10,000 mature plants. Available after the 2018 season. 100 plant minimum. You dig, you haul. Corvallis, OR. 541-745-2012

Buying or Selling
Capital Press is here to help you!
1-800-882-6789
or FAX 503-370-4383
CapitalPress.com

Hazelnut Seedlings NURSERY GROWN Potted - \$5 each
503-799-3842
Paul 29-1/106

Blueberry Plants



Northern Highbush
Southern Highbush
Rabbiteye

"Providing superior plants and service for over 35 years."

(503) 873-1200
www.oreblueberry.com 32-3/106

822 Nursey Stock - Plants

Blueberry (20 varieties), Raspberry, Marion, Boysen, Currant, Grape, Kiwi, Strawberry Plants. Canby, OR. 503-730-4788
www.canby.com/morningshade



Bare Root Hazelnut Trees: We have up to (20,000) bare root Yamhill hazelnut trees that will be ready for 2018-2019 planting. Along with: Doris, York, McDonald, Sacajawea and Webster for pollinators. Sherfy Farms, Albany, OR. 541-979-7739

EMERALD GREEN ARBORVITAE: rooted cuttings and 2-1/4", liners available. Forest Grove, OR. Call 503-359-7540



Hedge & Border Varieties: Leyland Cypress, Green Giant, Arborvitae, and Laurels. Excellent for road and property barriers. Severson Farms, Springfield, OR. Call 541-228-6085

Hazelnut Trees: McDonald, Jefferson, Yamhill, Wepster, York, Eta, Theta, Felix. Dayton, OR. 503-864-4422

823 Bees

Honey Extractor 2-frame Standard Churn Company Beautiful condition; all surfaces powder coated. Root Company electric decapper, \$500 both. Carlton, OR. 503-857-2255

824 Seed

Quality VNS Alfalfa Seed: \$2.00/ lb. Kreggers, Touchet, WA. Chris 509-394-2400

Pasture Seed \$1.25/ lb. Lawn Seed \$1/ lb. Wheat Straw \$100/ ton. Grass hay \$120/ ton. Wheat \$6/ bag. Rickreall, OR. 503-623-6922

Summer COVER CROP SEED and beneficial insect plants: Buckwheat, Flax, Phacelia and More. Clean & Quality. Albany, OR. Call/ text: 541-905-2111

825 Fertilizer

Organic Fertilizer: PotentGrow 5-2-2 organic fertilizer pellets. Product of Washington State. WSDA approved for organic use. Made from Chicken Litter and Canola Seed Meal. Available in bulk, 1-ton totes, 25 pound bags. OR./ WA. For pricing and freight quotes call 541-602-9477 or e-mail: info@potentgrow.com

CHICKEN LITTER/ MANURE: OR./ WA. Delivery available. Call/ text 360-520-6782 or email: bowtech52@gmail.com

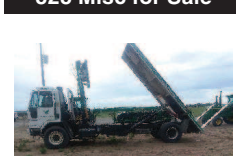
825 Fertilizer

Chicken Manure and/ or Litter
For sale in truckload lots, delivered. OR./ WA. Call 541-602-9477 or e-mail: info@potentgrow.com

826 Organic

Various haylage: organic and conventional, grass, clover, alfalfa, barley, vetch, peas, oats, \$50-\$65 bale. Possible delivery. Scio, OR. 503-930-2738

828 Misc for Sale



1999 American Eagle eight bale hay stacker mounted on a 1989 CF8000 Ford truck. Been through Circle C shop and is field ready. Please contact for details, \$36,000. Shoshone, ID. 208-280-3777

Globe Commercial Meat Slicer Model 3600, 110VAC, \$1295. Fairbanks platform scale, 500 lb capacity, \$250. F. Dick 12 liter sausage stuffer, \$1,050. Heavy Duty (12 gauge) stainless steel stock pots with lids. All 10" diameter, 3.5 gallon, \$50, 5.0 gallon, \$75, 5.5 gallon, \$85. Washtucna, WA. 509-431-8061

869 Livestock Equip. & Supplies

Livestock Panels: 16' (6) rail, (3) brace, \$128 each. 12' panels, (6) rail, (2) brace, \$96. Bow gates, all lengths and sizes. These panels are new Green color, hundreds available. **Heavy 16' Feeder Panels,** \$330 each. La Grande, OR. 541-805-9279, 541-963-6258

Hay feeding wagon, fits 4 large bales, highway usable, \$1200. **Cattle Squeeze Chute:** manual, \$850. Oregon City, OR. 503-655-6466



2005 Elite 6-horse, from three 8x10 to six 4x10 stalls. Dividers store inside trailer. 8'4" interior height, fully insulated. air ride, water buckets don't spill a drop. Rear and side ramps, access doors and roof vents for all stalls. Exterior LED lighting, new tires. Electric over hydraulic brakes, \$40,000. Stayton, OR. 503-559-5966

872 Dairy Eq. & Supplies

Polydome Calf Nursery: Hutches available for various climates. Western Polydome, Inc. Monroe, WA. 800-822-5837

CAPITAL PRESS CLASSIFIEDS GET RESULTS!

NEW MANURE SPREADER

400 bu. • BUY OR RENT
Call Scott at Barr-Tech
Compost/Organics Recycling
Authorized Dealer of PIK RITE Spreaders
509-590-0437
www.Barr-Tech.net
Sprague, WA 32-2/104

875 Tanks & Storage



21,000 Gallon Dragon Storage Tank Trailers, several available from \$16,000. Dayton, OR. 503-969-9545



6000 Gallon Tank: tandem axle, with road duster, \$8950. Sandy, OR. Call Pat: 503-407-9062

FUEL TANK: (1) 5000 gallon UL2085, split 2500/2500. Salem, OR. Peter 503-881-9803



PUMP & TANK: Viking 4125 Rotary 2" pump with 7.5 HP VIK 230/460V 3ph motor, Viking helical gear reduction drive, and pressure relief valve, \$1,500. **5000 gallon round vertical carbon steel tank** with food grade coating for liquids. Sloped bottom, center discharge outlet. 18" Tall x 10" Diameter \$3,500. Both for \$4250. Eugene, OR. Contact Julie Crooks 541-689-0913

PLASTIC TOTES: Like new 275 gallon totes, \$129. Discounts on 6 or more at \$115 each. Loading time: Monday- Thursday 9:30-4:30, Friday 9:30-3:00 only. GloryBee Factory Store, 29548 B Airport Rd, Eugene, OR. 541-689-0919

55 GALLON DRUM SALE: Plastic drums \$9.95. Metal drums with open top, \$10. Discounts available on purchase of 10 or more. Loading time: Monday- Thursday 9:30-4:30, Friday 9:30-3:00 only. GloryBee Factory Store, 29548 B Airport Rd, Eugene, OR. 541-689-0919



316 SS Dome Bottom Tank: 6,500 gallon, \$1.55 per gallon. Hermiston, OR. 541-571-0514
email: 53hchull@gmail.com

878 Generators

Briggs & Stratton electric generator, 8 hp, rated watts 5000, pull start, \$350. Touchet, WA. 509-730-1119

CAT Generator D333: 100kW, \$7500 with panels. Ridgefield, WA. 360-903-6643



Mitsubishi Diesel; 6 cylinder, 75kW 480V, 708 hours, 3000 lb, \$3500. Boring, OR. 209-204-4306

Don't look any further! Sell or buy what you need in Capital Press!

1-800-882-6789
FAX (503) 370-4383

AD DEADLINES:
Classified Display Ads, Weds. @ 10AM
Classified Line Ads, Weds. @ Noon
CapitalPress.com

887 Irrigation Equip.

878 Generators



GENERATORS: Low hour takeouts, 20kW to 2000kW, diesel, propane, & natural gas. Cooperstown, ND. We ship nationwide. 701-371-9526 or 701-367-4305
abrahamindustrial.com

887 Irrigation Equip.

(60) Used Pivots: Engines, pumps. Garden Valley, ID. Call Mike at 208-420-1480, or see www.pivotsplus.com



Cummins 6" Water Pump: 8.3, 230HP. Cummins Tier1, Berkeley 6" pump. Trailer/ fuel tank combo, \$12,000. Shingle Springs, CA. 530-957-0589

(3) Irrigation Reels: **AVI,** 800' hose, turbo, \$8500 OBO. **Nelson,** 1150' hose, turbo, \$9800 OBO. 1970s **Pringle,** 1350' hose, Honda motor, \$5000 OBO. All 3 in good working order. Portland, OR. Call 503-975-8733

50,000' of new PVC pipe: Surplus, sizes range from 2 inch to 16 inch OD. Delivery available. Call Mike 602-758-4447

(2) Fertilizer or chemical injection pumps with flush tanks on trailers, \$2,000 each. 500 gallon per minute **Fairbanks Morse PTO pump** on wheels, \$500. Lynden, WA. 360-988-1584

878 Generators

Used T&L Hydraulic Circle: 1153' long, 7 towers, 15 HP hydraulic pump. 11.2X24 Tires and wheels. Hose drops with I-WOBS. Nelson SR100 end gun, \$7500. Warden, WA. Call for appointment 509-750-4302



300 HP, 5,800 GPM, at 160' head. With its VFD, \$18,000. Hermiston, OR. 541-571-0514

YAKIMA GENERATOR

- Mobile Generator Specialist
- RV • Horse Trailer • Camper
- Cummins Onan • Kohler Power
- Factory Authorized Service Generators, Welders & Engines

Full Mechanical / Electrical Shop Large Parts Inventory
NEW & USED & TRADE
Online Sales
yakimagenerator.com
Yakima, WA • 509-571-1922

887 Irrigation Equip.

WATER MASTER SERIES AND EVERGREEN

SUPERIOR SERVICE & DESIGN

- All your needs for irrigation parts service
- We build custom equipment for your special needs.
- Hose replacements & fusion repairs

• Transport Tanks • Rental Returns & Used Equipment
• US MANUFACTURED Dairy Waste Equipment

VALLEY WORKMAN

Truck Equipment

- Full Service
- Alterations
- Dump bodies • Hoists
- Farmbeds • Flatbeds



VALLEY FAB
CORP
10910 Portland Rd. NE • Brooks, OR
Call: 503-792-3739 • Fax: 503-792-3738 32-3/106

BISON PIPE & SUPPLY

800.764.7473
BISONPIPE.COM

20" X .312

NEW PRESSURE TESTED MATERIAL

AVAILABLE NOW!

OTHER SIZES AVAILABLE!
240 E. FRONTAGE RD. N., JEROME, ID 83338

ERNST IRRIGATION

GOT TRAVELERS?

Tier 4 Final Engine requirements will take effect for any relevant equipment produced after January 1st, 2019. This will add significant expense to the price of a Booster Machine. Contact us now if you're thinking about replacing or purchasing any new Booster before then.

NEW TRAVELERS:

- 4"ID X 1400ft w/JD4045 engine and Cornell 3RB pump
- 4"ID x 1400ft w/8hp Honda Engine Drive
- 3.7"ID x 1100ft w/8hp Honda Engine Drive
- 3.7"ID x 700ft w/5.5hp Honda Engine Drive
- 3"ID x 1100ft w/5.5hp Honda Engine Drive

USED EHCO
3" x 1000 ft;
New Electric Start
\$11,000

www.ErnstIrrigation.com • (503) 633-1111
20179 Main St., St. Paul, OR 97137 • Mon-Fri 8am-5pm; Sat 8am-2pm 32-3/106