

905 Antique Farm Eq. & Parts



Antique Water Pumping Windmills: from Iowa farms, completely rebuilt and ready to pump or show. Mulino, OR. 503-348-2378

77 Oliver tractor & more. Saint Paul, OR. 503-341-2235

907 Nursery Equip. & Supplies

FRESH SAWDUST: Consistently fair pricing. Forest-Grove, OR. For pricing call 503-849-0216



Greenhouses: (2) 30'x150', Harnois Ovaltech II, includes heaters, fan jets, HAF fans, exhaust fans, shutters, crop supports, Bartlett controls. Set for double poly and rollup side walls. Puyallup, WA. 253-686-1621

USED NURSERY CONTAINERS:

Used, but reusable nursery containers. All sizes. Inventory changes daily. Call for current availability and prices. Sawyer Farms, Scio OR. 503-769-3417. juddsfarm@wvi.com (also wanted: used containers)

908 Garden, Turf, Yard Equip.

Cushman Truckster: good condition, runs well, \$1550. Salem, OR. 503-363-1739

(2) Lawn mowers, excellent condition, \$85 & \$125. Nampa, ID. 208-850-2400



Turf Teq Broom Thatcher Like new. \$1500. Dallas, OR. (503)787-3512

911 Hay Equip.

RETIRING: H&S AR1261 hay rake, 2015, excellent condition, \$7500. Bonanza, OR. 541-892-5682

2012 Road Runner hay squeeze, 3 stage mast. 405-762-2815 www.customhaysqueeze.com



New Holland 216 V Rake: new teeth 2 seasons ago, field ready, \$7500. Amity, OR. 503-435-7504



2009 SB44 Challenger in-line baler, excellent condition very little use, \$15,800. Jefferson, OR. 541-921-8145

2011 New Holland Haybine: Model 472, like new, \$7900. Buxton, OR. 503-324-3305



2012 New Holland BR7090 Twine Round Baler: wide hydraulic pickup flotation tires. Good condition, 1 owner. Reduced price \$17,900. Lakeview, OR. 541-219-0741



PRICE REDUCED, FIELD READY- 2011 New Holland H8080 Swather, with 416, 16' disc-bine header, deluxe cab, electric mirrors, 1700 hours, 1 owner. Great condition, very well maintained, \$76,900. You won't want to miss this one! S Eastern, OR. 541-219-0741

BALE WAGONS: Rebuilt New Holland 1085 bale wagon, sharp, \$57,500. 2007 New Holland BW28 bale wagon, \$90,000. Rebuilt 1988 New Holland NH1068 bale wagon, very sharp, \$47,500. Rebuilt New Holland 1079 bale wagon, \$70,000. New Holland 1075 gas unit, \$26,000. Sod Buster Sales, Polson, MT. 406-883-2118

911 Hay Equip.

1075 New Holland Bale Wagon: Perkins diesel recently rebuilt computer. Excellent condition and field ready. Asking \$22,000 OBO. Hesston 6650 swather also available. In good condition, field ready, 3500 hours. Asking \$9000 OBO. Lancaster, CA. 661-754-0955



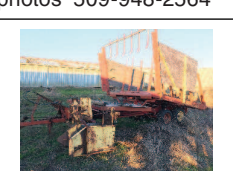
2550 New Holland Swather: 14' 2300 header, new guards and sickles, machine has been well maintained and shedded, 4653 hours, \$15,000. Malin, OR. 541-891-0130



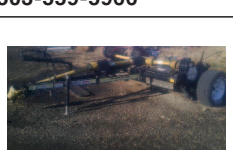
John Deere 4890 Swather: 2001, 890 16 foot header with reverser, steel roller conditioner, 1052 hours. Superb, nearly new condition inside and out, \$38,000. Kennewick, WA. Text for photos 509-948-2564.

New Holland 216 V Hay Rake: hydraulic drive, bring 2 swaths together, good condition, in use, \$5500. **Tonutti V 10 wheel rake,** like new, \$5000. Canby CA. 530-640-1982

New Holland 1030 Stacker: pull type, 2 tie and 3 tie, fully reconditioned and field ready. Probably the nicest one available, \$10,500. Kennewick, WA. Text for photos 509-948-2564



NH1033 field ready. Mods for faster bale pickup and full load indicator. Full remote operation from cab, \$8,500. Stayton, OR. 503-559-5966



Excellent 2014 ReCon300 Hay Conditioner. Perfect to shorten drying days! \$17,500. La Grande, OR. 541-805-9622

9240 Hesston 2005 Swather: 14' head, \$25,000. **Hesston 1365:** pull type, rotary, 15.5" swather, \$12,500 OBO. **8585 Case IH 3x4 Baler:** excellent shape, 35k bales, recent rebuild, \$34,500 OBO. **Allen 8803 Rake:** 5 function electric control, \$10,500. Deer Park, WA. 509-994-9520



New Holland BC 5080: 16 x 18, 2 tie baler, \$22,000 OBO. Valley, WA. 509-868-7013



580 New Holland: 16 x 18, 2 tie baler, \$20,000 OBO Valley, WA. 509-868-7013



John Deere 457: round baler, 4x5, twine wrap, \$15,000 OBO. Valley, WA. 509-868-7013



20125 Monchiero nut harvester, 295 hours, like new, \$140,000. Silverton, OR. 503-932-0766

2014 New Holland 216 Rakes: \$22,000 OBO. Valley, WA. 509-868-7013

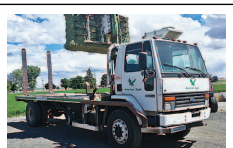
New And Used Parts: for all models New Holland bale wagons. **Largest Inventory in North America.** Sod Busters Sales, Polson, MT. 877-735-2108 or 406-883-2118

2014 Allen 8803 Rake: Serial #13001. Field Ready, Electronic Controls, Under 100 hours, like new, ready to go to work. \$20,000. Greenville, CA. (530)592-9798

911 Hay Equip.



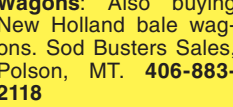
Case IH 8585 3x4 baler. Field ready, \$18,000 OBO. Stanfield, OR. 541-571-1090



Berry harvester trailer for older model side row Littau harvester, \$1500 OBO. Salem, OR. 503-793-9106

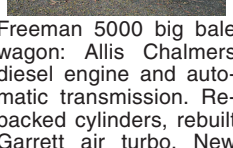


American Eagle stacker truck, Ford cabover, 6 wheeler, stacks 12 bales, 6 high. Field ready, \$35,000 OBO. Stanfield, OR. 541-571-1090



Large Supply of Rebuilt New Holland Bale Wagons: Also buying New Holland bale wagons. Sod Busters Sales, Polson, MT. 406-883-2118

#1 Balewagons: Buy, Sell, New Holland 2&3 wide self-propelled, pull-type models, parts, tires, manuals. Caldwell, ID. 208-880-2889 www.balewagon.com



Freeman 5000 big bale wagon: Allis Chalmers diesel engine and automatic transmission. Re-packed cylinders, rebuilt Garrett air turbo. New oil filters, oil, wire looms, electric sensors, hydraulic valve and hoses. Tires are in fair condition, \$25,000. Sublimity, OR. Call 503-769-6681

Used New Holland BW28 bale wagon, excellent condition, 1 owner, \$90,000. **(2) New Holland BB900 balers,** \$14,500 each. **(1) New Holland BB900,** 592 hours, excellent condition, \$27,000. Woodburn, OR. Greg Wilmes 503-969-8705

1095 Balewagon, 1 owner operated, clean machine, field ready, \$54,000 OBO. Hilmar, CA. 209-595-4675



FREEMAN BALER: 2 string, small bales, Wisconsin engine, \$2900. Reasonable offers considered. Elmira, OR. 541-935-9739

New Holland 580 baler, excellent shape, \$15,400. Touchet, WA. 509-730-1119



New Holland Stackliner 1032 Bale Stacker: working condition, standard and remote/ cab controls, operator's manual, \$4500. Emmett, ID. Call or text: 208-573-8405

New Holland H9880 bale wagon, like new, 170 hours, \$140,000. Terrebonne, OR. 541-699-2242



RCO Baits Gophers • Squirrels Voles-Moles Dealer Locator 1-800-214-2248 Harrisburg, OR 30-1100



917 Orchard/Vineyard Equip.

20125 White: diesel, 3 point, PTO, remotes, good tires, runs good, 3000 hours, \$6000 OBO. Monmouth, OR. 503-838-3512

Weiss McNair Hazel-nut Harvester with mud brush and front paddles. Belt in good condition and extended for service tote cart. Original owner. Always stored inside and regularly serviced. Great shape! \$21,000. Lynden, WA. 360-988-9240



Schmeiser vineyard ripper- new/ never used. Three 34" shanks. Selling for \$2,910 (new \$4,850). Roseburg, OR. Stephen 541-459-6060

917 Orchard/Vineyard Equip.



Berry harvester trailer for older model side row Littau harvester, \$1500 OBO. Salem, OR. 503-793-9106

400 Gallon Rears air blast, \$8,000. Silverton, OR. 503-932-0766



Gregoire G2 Grape Harvester: bought it new, only used it 2 hours. I had used on in a vineyard in the Columbia Basin but the hills are so steep in The Dalles area so we are hand picking and have no continued use. Other than for "our" ground, these units are great pickers. https://www.bluelinemfg.com/products/detail.html?itemid=15 See item on @: https://www.youtube.com/watch?v=iS6N4X8CSqo \$125,000. The Dalles, OR. 360-609-1166

Looking for ORCHARD/VINEYARD PROPERTY? Go to Class. 570

Capital Press
The West Ag Weekly
www.capitalpress.com
917-1-52-2/10U

TALLMAN LADDERS

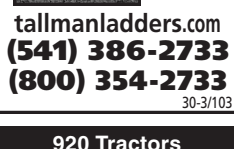
Crafted for Safety, Longevity, Stability and Affordability!

Quality Made in the U.S.A. Since 1954

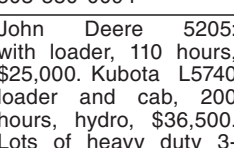
tallmanladders.com
(541) 386-2733
(800) 354-2733
30-3/103



Massey Ferguson 130 Vineyard and parts tractor. Cash. Puyallup, WA. 253-307-4226



John Deere 2630: 2WD, \$10,000 OBO. Valley, WA. 509-868-7013



2011 Kubota M9540, loader/bucket, fork attachment, 3190 hours, ultra grand cab, good rubber, 3 port hook up in rear. Good condition, field ready, \$38,500. Scappoose, OR. 503-804-2652

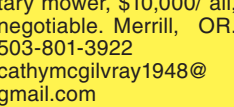


1990 John Deere 855: 24HP, diesel, John Deere 550 tiller, 6' brush hog mower, back blade. Low hours. 18' all steel and aluminum flatbed trailer, \$9000 for all. Corvallis, OR. 541-602-3739

1961 John Deere 1010 crawler: serial #24854, inside mount, 6 way industrial blade in good shape. Engine is froze up, final drives need rebuilding, rebuilt rails, rollers and idler. Has new tracks sprocket, frame and hydraulics are good. Lots of good parts, \$4000. Grangeville, ID. 208-507-1725

Case 485 Quadtrac, excellent condition, PTO, 36" tracks, deluxe cab, 2011, 3000 hours, \$164,500. Silver Lake, OR. 541-480-3371

Ford 4000 tractor with loader, good condition. Southwest WA. 360-253-0905



John Deere 4010 compact utility tractor, diesel, 388 hours, includes: loader, box scraper, rotary mower, \$10,000/ all, negotiable. Merrill, OR. 503-801-3922 cathymcgilvray1948@gmail.com

1973 Ford Model 3000 Diesel: fresh engine, \$5000. Buxton, OR. 503-324-3305

Collectors! 1961 Ford Dexta 32 HSP Ford-Perkins F3 144 CI/2.4L 3 cylinder diesel, 6 forward and 2 reverse transmission. Not currently operational, needs TLC. \$2500 OBO. Sandy, OR. Call Chris 503-668-3975

2-70 White: diesel, 3 point, PTO, remotes, good tires, runs good, 3000 hours, \$6000 OBO. Monmouth, OR. 503-838-3512

SOLD THE FARM! CASE MX220: MFWD, duals, quick hitch, 10,000 hours. Original owner!! \$35,000.

JOHN DEERE 7810: MFWD, new tranny, duals, quick hitch, loader, block, 7800 hours, \$49,000. Both recently serviced, field ready! Mount Vernon, WA. 360-661-7135

920 Tractors



Ford 4000 tractor with John Deere 5' brush hog in good condition, \$6,500. Toledo, WA. 360-749-1302



Challenger MT 585, 220 HP, air ride, gps, 90% rubber, duals, all wheels weighted, \$71,500. Fort Rock, OR. 541-480-3024

YanMar 336D Diesel, odometer shows 2170 hours, asking \$4000 OBO. Warrenton, OR. 503-407-9035, 503-338-9808

Kubota loader tractor, 4x4, 56HP, 4 speed with hi lo and forward reverse lever, all manual transmission, 4,744 hours, one set of remotes, new seat, all new seals in front differential, \$16,500. Call 541-934-2205 or text 541-604-4654 Dallas or David during business hours. Kimberly, OR. 541-934-2205

John Deere 6140R, 2700 hours, \$67,500. Albany, OR. 503-510-7779



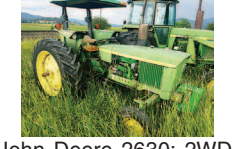
Case IH JX1100U: with 3 point, 540 and 1000 PTO, 2 remotes, duals, 1808 hours, nice 1 owner tractor, \$27,000. Monmouth, OR. 541-207-4941

CASE IH 7110 Magnum: 2WD, 18 speed, power shift, 6500 hours, very nice, \$31,500. **CASE IH 165:** 5 bottom rollover plow, Trip, \$5,000 OBO. Deer Park, WA. 509-994-9520

Massey Ferguson 130 Vineyard and parts tractor. Cash. Puyallup, WA. 253-307-4226



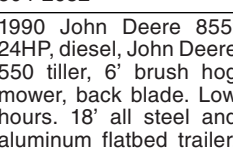
John Deere 2630: 2WD, \$10,000 OBO. Valley, WA. 509-868-7013



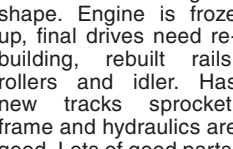
2011 Kubota M9540, loader/bucket, fork attachment, 3190 hours, ultra grand cab, good rubber, 3 port hook up in rear. Good condition, field ready, \$38,500. Scappoose, OR. 503-804-2652



1990 John Deere 855: 24HP, diesel, John Deere 550 tiller, 6' brush hog mower, back blade. Low hours. 18' all steel and aluminum flatbed trailer, \$9000 for all. Corvallis, OR. 541-602-3739



1961 John Deere 1010 crawler: serial #24854, inside mount, 6 way industrial blade in good shape. Engine is froze up, final drives need rebuilding, rebuilt rails, rollers and idler. Has new tracks sprocket, frame and hydraulics are good. Lots of good parts, \$4000. Grangeville, ID. 208-507-1725



John Deere 4010 compact utility tractor, diesel, 388 hours, includes: loader, box scraper, rotary mower, \$10,000/ all, negotiable. Merrill, OR. 503-801-3922 cathymcgilvray1948@gmail.com



1973 Ford Model 3000 Diesel: fresh engine, \$5000. Buxton, OR. 503-324-3305

Collectors! 1961 Ford Dexta 32 HSP Ford-Perkins F3 144 CI/2.4L 3 cylinder diesel, 6 forward and 2 reverse transmission. Not currently operational, needs TLC. \$2500 OBO. Sandy, OR. Call Chris 503-668-3975

2-70 White: diesel, 3 point, PTO, remotes, good tires, runs good, 3000 hours, \$6000 OBO. Monmouth, OR. 503-838-3512

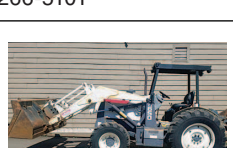
SOLD THE FARM! CASE MX220: MFWD, duals, quick hitch, 10,000 hours. Original owner!! \$35,000.

JOHN DEERE 7810: MFWD, new tranny, duals, quick hitch, loader, block, 7800 hours, \$49,000. Both recently serviced, field ready! Mount Vernon, WA. 360-661-7135

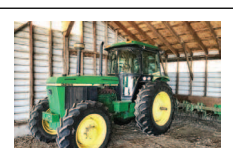
920 Tractors



Massey Ferguson 180 diesel, farm hand high lift loader, 3rd valve, new tires, low hours, everything works, 1 owner, \$8500 OBO. Chehalis, WA. 360-259-4295, 360-266-5101



2002 Terex 860: New motor box, scraper with rippers, PTO, \$19,500. Sandy, OR. Pat: 503-407-9062



John Deere 3255: 5050 hour, 2 remotes, excellent condition, \$32,000. Salem, OR. (503)932-6191



Allis Chalmers 5020: diesel loader, 3 point PTO, Woods mower, \$4950. Sandy, OR. Call Pat: 503-407-9062

920 Tractors



John Deere 5205: 4x4 quick change loader, rear remotes, flail mower, 1600 hours, \$24,500. Sandy, OR. Call Pat: 503-407-9062

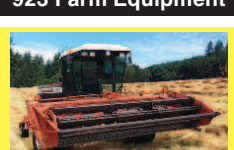
1953 Ferguson TO30: with Wagner step through loader, full hydraulic, 12V conversion with electronic ignition, 800 lb counterweight, 5' scraper blade, runs great, tires good, \$3500 OBO. Graham, WA. 253-307-0883

Case IH 685 1989: 8F, 4R, Trans. 9.5x48 Rear Tires. \$7500 OBO. Freedom, CA. (831)750-6954

920 Tractors

Ferguson T020 tractor, \$1200. Salem, OR. 503-393-8615

923 Farm Equipment



1997 8400 swather, 14' grass seed head, 1536 hours, clean machine, \$11,900. SCIO, OR. 503-931-3165 text or call



John Deere 4 bottom: great condition, \$2,500