

911 Hay Equip.
2011 New Holland Haybine: Model 472, like new, \$7900. Buxton, OR. 503-324-3305

New And Used Parts: for all models New Holland bale wagons. **Largest Inventory in North America.** Sod Busters Sales, Polson, MT. 877-735-2108 or 406-883-2118



2550 New Holland Swather: 14' 2300 header, new guards and sickles, machine has been well maintained and shedded, 4653 hours, \$15,000. Main, OR. 541-891-0130



John Deere 4890 Swather: 2001, 890 16 foot header with reverser, steel roller conditioner, 1052 hours. Superb, nearly new condition inside and out, \$38,000. Kennewick, WA. Text for photos 509-948-2564.

New Holland 1030 Stacker: pull type, 2 tie and 3 tie, fully reconditioned and field ready. Probably the nicest one available, \$10,500. Kennewick, WA. Text for photos 509-948-2564



Freeman 5000 big bale wagon: Allis Chalmers diesel engine and automatic transmission. Re-packed cylinders, rebuilt Garrett air turbo. New oil filters, oil, wire looms, electric sensors, hydraulic valve and hoses. Tires are in fair condition, \$25,000. Sublimity, OR. Call 503-769-6681



NH1033 field ready. Mods for faster bale pickup and full load indicator. Full remote operation from cab, \$8,500. Stayton, OR. 503-559-5966



John Deere 457: round baler, 4x5, twine wrap, \$15,000 OBO. Valley, WA. 509-868-7013

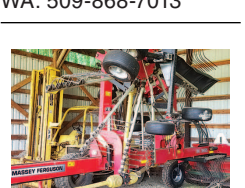


Excellent 2014 ReCon300 Hay Conditioner. Perfect to shorten drying days! \$17,500. La Grande, OR. 541-805-9622

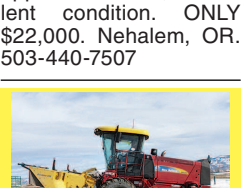
911 Hay Equip.
#1 Balewagons: Buy, Sell, New Holland 2&3 wide self-propelled, pull-type models, parts, tires, manuals. Caldwell, ID. 208-880-2889 www.balewagon.com



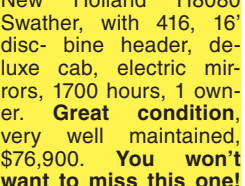
John Deere 467 small square baler, \$2500. Coquille, OR. 541-572-5564



New Holland H9880 bale wagon, like new, 170 hours, \$140,000. Terrebonne, OR. 541-699-2242



Newhouse hay elevator, 16', motor: lite use, stored inside, good condition, \$450. Albany, OR. 503-437-0928



New Holland BC 5080: 16 x 18, 2 tie baler, \$22,000 OBO. Valley, WA. 509-868-7013



2017 Massey Ferguson rake, RK3855, used approx 8 hours, excellent condition. ONLY \$22,000. Nehalem, OR. 503-440-7507

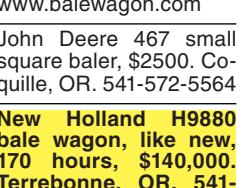


John Deere 457: round baler, 4x5, twine wrap, \$15,000 OBO. Valley, WA. 509-868-7013

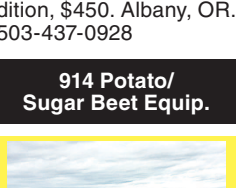


John Deere 457: round baler, 4x5, twine wrap, \$15,000 OBO. Valley, WA. 509-868-7013

917 Orchard/Vineyard Equip.
Berry harvester trailer for older model side row Littau harvester, \$1500 OBO. Salem, OR. 503-793-9106



400 Gallon Rears air blast, \$8,000. Silverton, OR. 503-932-0766



PARMA POTATO HARVESTER: CUSTOM BUILT FOR SMALLER POTATOES. New belted chain, single drop, rear clod table, \$8,500 OBO. Madera, CA. 559-352-1700



LOGAN SERIES 90 POTATO WINDROWER: 2 row, RH, excellent condition, \$7,750 OBO. Madera, CA. 559-352-1700



917 Orchard/Vineyard Equip.



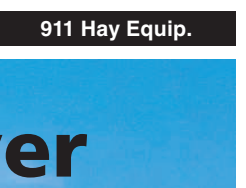
20125 Monchiero nut harvester, 295 hours, like new, \$140,000. Silverton, OR. 503-932-0766



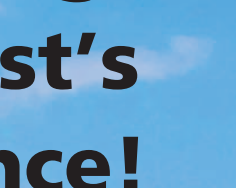
Weiss McNair Hazelnut Harvester with mud brush and front paddles. Belt in good condition and extended for service tote cart. Original owner. Always stored inside and regularly serviced. Great shape! \$21,000. Lynden, WA. 360-988-9240



Schmeiser vineyard ripper- new/ never used. Three 34" shanks. Selling for \$2,910 (new \$4,850). Roseburg, OR. Stephen 541-459-6060



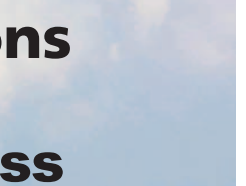
Allis Chalmers HD5 with 3-71, 5 roller, cab, hydraulics, good condition \$3000. Weston, OR. 541-566-2173



Ferguson T020 tractor, \$1200. Salem, OR. 503-393-8615



John Deere 5205: with loader, 110 hours, \$25,000. Kubota L5740 loader and cab, 200 hours, hydro, \$36,500. Lots of heavy duty 3-point implements. Cutters, blades, box scrapers. Ditch mower. Call for prices. Bend, OR. 503-550-0094



Case 485 Quadtrac, excellent condition, PTO, 36" tracks, deluxe cab, 2011, 3000 hours, \$164,500. Silver Lake, OR. 541-480-3371



Ford 4000 tractor with loader, good condition. Southwest WA. 360-253-0905



John Deere 4010 compact utility tractor, diesel, 388 hours, includes: loader, box scraper, rotary mower, \$10,000/ all negotiable. Merrill, OR. 503-801-3922 cathymcgilvray1948@gmail.com

1973 Ford Model 3000 Diesel: fresh engine, \$5000. Buxton, OR. 503-324-3305

917 Orchard/Vineyard Equip.
Berry harvester trailer for older model side row Littau harvester, \$1500 OBO. Salem, OR. 503-793-9106



400 Gallon Rears air blast, \$8,000. Silverton, OR. 503-932-0766



RCO Baits
Gophers • Squirrels Voles-Moles
Ask for your Capital Press Discount
Dealer Locator
1-800-214-2248
Harrisburg, OR 97-1/100

Looking for ORCHARD/VINEYARD PROPERTY? Go to Class. 570

Capital Press
The West's Ag Weekly
www.capitalpress.com
917-1-52-2/HOU



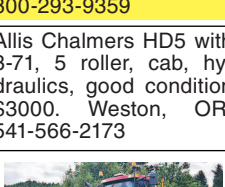
Challenger MT 585, 220 HP, air ride, gps, 90% rubber, duals, all wheels weighted, \$71,500. Fort Rock, OR. 541-480-3024



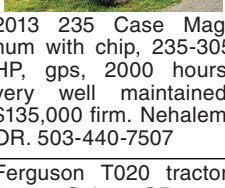
2000 John Deere 9300: Grouser Blade, 3 Point Hitch, \$42,000. INTERMOUNTAIN NEW HOLLAND, Twin Falls, ID. 800-293-9359



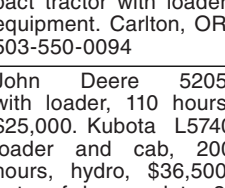
2014 New Holland Boomer 37: Foldable ROPS, 12x12 Synchro Shuttle, \$13,000. INTERMOUNTAIN NEW HOLLAND, Twin Falls, ID. 800-293-9359



Yanmar 336D Diesel, odometer shows 2170 hours, asking \$4000 OBO. Warrenton, OR. 503-407-9035, 503-338-9808



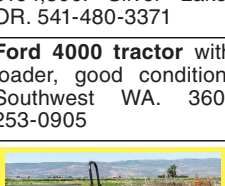
2013 New Holland T8.360: 310 Engine HP, 4WD, Deluxe Cab, \$110,000. INTERMOUNTAIN NEW HOLLAND Twin Falls, ID. 800-293-9359



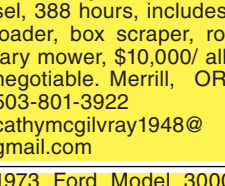
Allis Chalmers HD5 with 3-71, 5 roller, cab, hydraulics, good condition \$3000. Weston, OR. 541-566-2173



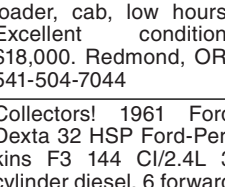
John Deere 6140R, 2700 hours, \$67,500. Albany, OR. 503-510-7779



Case IH 685 1989: 8F, 4R, Trans. 9.5x48 Rear Tires. \$7500 OBO. Freedom, CA. (831)750-6954



Case IH JX1100U: with 3 point, 540 and 1000 PTO, 2 remotes, duals, 1808 hours, nice 1 owner tractor, \$27,000. Monmouth, OR. 541-207-4941



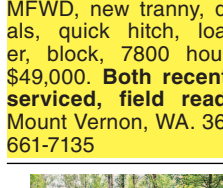
CASE IH 7110 Magnum: 2WD, 18 speed, power shift, 6500 hours, very nice, \$31,500. CASE IH 165: 5 bottom rollover plow, Trip, \$5,000 OBO. Deer Park, WA. 509-994-9520

Massey Ferguson 130 Vineyard and parts tractor. Cash. Puyallup, WA. 253-307-4226

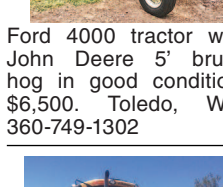
920 Tractors
2-70 White: diesel, 3 point, PTO, remotes, good tires, runs good, 3000 hours, \$6000 OBO. Monmouth, OR. 503-838-3512



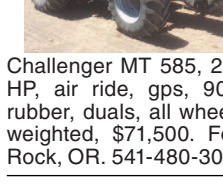
John Deere 9600 combine: rasp bar, field ready, chopper, 212 pickup header, 3735 separator hours, shed stored, well maintained. New Rubber Clover Concave, hill fan kit, \$34,000 OBO Forest-Grove, OR. 503-887-6597



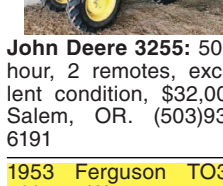
4x4 Japanese Mini Trucks: Honda, Suzuki and others. Truck capability, quad maneuverability. Dump available. Starting at \$3995. Portland, OR. 503-805-2684 OregonDieselImports.com



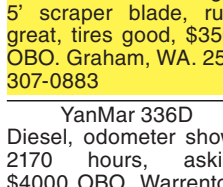
John Deere 900: 5 shank subsoiler, 14' beam, dual gauge wheels with mole and extra shanks, \$3500. 1975 Dodge 300 Spray Rig, 50' boom, 38" terra tires, 400 gallon dual agitation stainless steel tank, foam markers, \$2000. Chehalis, WA. 360-520-7314



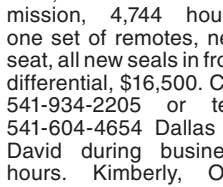
2017 Gold Digger tile plow: 4", 6", 8" boots, \$23,000. Silverton, OR. 503-932-0766



Truax FLEXII Drill 818RD: no-till seed drill, 3 seed boxes, 8" spacing, 12' seeding width, 5,900 lbs. Veeder-Root Hubodometer= 1272.3 acres. Buyer responsible for transportation, \$15,500. Contact Lori. Klamath Falls, OR. 541-273-0789



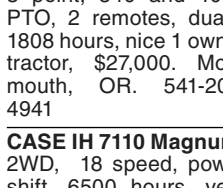
1953 Ferguson T030: with Wagner step through loader, full hydraulic, 12V conversion with electronic ignition, 800 lb counterweight, 5' scraper blade, runs great, tires good, \$3500 OBO. Graham, WA. 253-307-0883



Kubota tractor, 4x4, 56HP, 4 speed with hi lo and forward reverse lever, all manual transmission, 4,744 hours, one set of remotes, new seat, all new seals in front differential, \$16,500. Call 541-934-2205 or text 541-604-4654 Dallas or David during business hours. Kimberly, OR. 541-934-2205



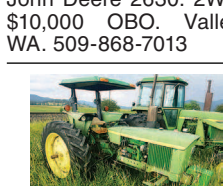
2002 John Deere 970: 25ft Roller Harrow, INTERMOUNTAIN NEW HOLLAND, \$12,000. Jerome, ID. 800-293-9359



2016 Lemkin disk, 13', used on approx 85 acres, excellent condition, \$40,000 firm. Nehalem, OR. 503-440-7507



2016 Macdon mower, 16' cut, converts to 9' position for transport on road, second season, \$40,000. Nehalem, OR. 503-440-7507



(2) SWATHERS: 1997 8400, 14' grass seed head, roughly 1600 hours, \$12,900. 9250 Macdon 14' auger header, 1115 engine hours, 940 header hours. Clean low hour machines. SCIO, OR. 503-931-3165 text or call



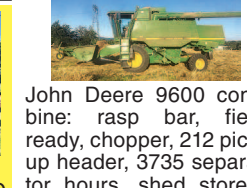
John Deere 2630: 2WD, \$10,000 OBO. Valley, WA. 509-868-7013



2011 Kubota M9540, loader/ bucket, fork attachment, 3190 hours, ultra grand cab, good rubber, 3 port hook up in rear. Good condition, field ready, \$38,500. Scappoose, OR. 503-804-2652

923 Farm Equipment
1999 Utility Trailer, 10' single axle, \$190. New Roll Barbed wire, \$10. Huge roll smooth grape wire, \$12. Free burnable scrap lumber. U haul. Garden City, ID. 208-344-9985

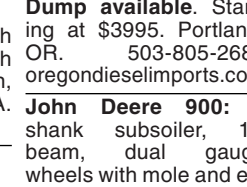
923 Farm Equipment
John Deere 3950 forage harvester with new house dolly, \$6000. Jefferson, OR. 541-971-3421



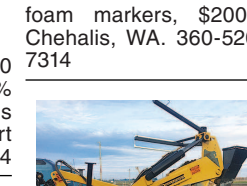
John Deere 914P combine: rasp bar, field ready, chopper, 212 pickup header, 3735 separator hours, shed stored, well maintained. New Rubber Clover Concave, hill fan kit, \$34,000 OBO Forest-Grove, OR. 503-887-6597



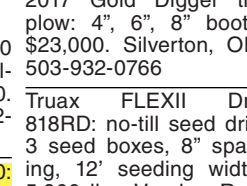
John Deere 9600 combine: rasp bar, field ready, chopper, 212 pickup header, 3735 separator hours, shed stored, well maintained. New Rubber Clover Concave, hill fan kit, \$34,000 OBO Forest-Grove, OR. 503-887-6597



John Deere 900: 5 shank subsoiler, 14' beam, dual gauge wheels with mole and extra shanks, \$3500. 1975 Dodge 300 Spray Rig, 50' boom, 38" terra tires, 400 gallon dual agitation stainless steel tank, foam markers, \$2000. Chehalis, WA. 360-520-7314



2017 Gold Digger tile plow: 4", 6", 8" boots, \$23,000. Silverton, OR. 503-932-0766



Truax FLEXII Drill 818RD: no-till seed drill, 3 seed boxes, 8" spacing, 12' seeding width, 5,900 lbs. Veeder-Root Hubodometer= 1272.3 acres. Buyer responsible for transportation, \$15,500. Contact Lori. Klamath Falls, OR. 541-273-0789



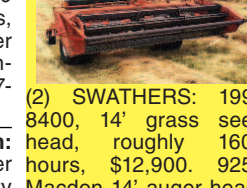
1953 Ferguson T030: with Wagner step through loader, full hydraulic, 12V conversion with electronic ignition, 800 lb counterweight, 5' scraper blade, runs great, tires good, \$3500 OBO. Graham, WA. 253-307-0883



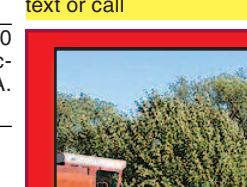
Kubota tractor, 4x4, 56HP, 4 speed with hi lo and forward reverse lever, all manual transmission, 4,744 hours, one set of remotes, new seat, all new seals in front differential, \$16,500. Call 541-934-2205 or text 541-604-4654 Dallas or David during business hours. Kimberly, OR. 541-934-2205



2002 John Deere 970: 25ft Roller Harrow, INTERMOUNTAIN NEW HOLLAND, \$12,000. Jerome, ID. 800-293-9359



2016 Lemkin disk, 13', used on approx 85 acres, excellent condition, \$40,000 firm. Nehalem, OR. 503-440-7507



2016 Macdon mower, 16' cut, converts to 9' position for transport on road, second season, \$40,000. Nehalem, OR. 503-440-7507



(2) SWATHERS: 1997 8400, 14' grass seed head, roughly 1600 hours, \$12,900. 9250 Macdon 14' auger header, 1115 engine hours, 940 header hours. Clean low hour machines. SCIO, OR. 503-931-3165 text or call



John Deere 2630: 2WD, \$10,000 OBO. Valley, WA. 509-868-7013

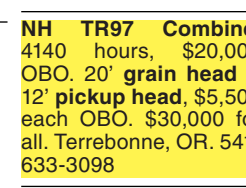


2011 Kubota M9540, loader/ bucket, fork attachment, 3190 hours, ultra grand cab, good rubber, 3 port hook up in rear. Good condition, field ready, \$38,500. Scappoose, OR. 503-804-2652

923 Farm Equipment
9600 John Deere Combine: 25' Header with Cart, \$28,000. Ogdan, UT. 801-710-0957



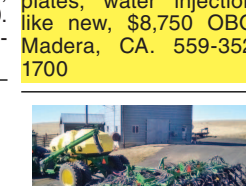
1998 Macdon 9300 Windrower. 14 ft Grass Seed Special Header. 2423.3 Hours, \$22,000. Albany, OR. 541-979-7102



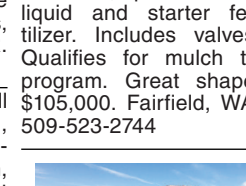
John Deere 914P combine: rasp bar, field ready, chopper, 212 pickup header, 3735 separator hours, shed stored, well maintained. New Rubber Clover Concave, hill fan kit, \$34,000 OBO Forest-Grove, OR. 503-887-6597



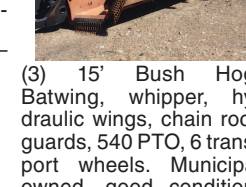
NH TR97 Combine, 4140 hours, \$20,000 OBO. 20' grain head & 12' pickup head, \$5,500 each OBO. \$30,000 for all. Terrebonne, OR. 541-633-3098



Renaldo precision vacuum plastic mulch planter: Gaspardo metering units with extra plates, water injection, like new, \$8,750 OBO. Madera, CA. 559-352-1700



John Deere 1870: 40ft. hoe drill, plumbed for liquid and starter fertilizer. Includes valves. Qualifies for mulch till program. Great shape, \$105,000. Fairfield, WA. 509-523-2744



(3) 15' Bush Hog: Batwing, whipper, hydraulic wings, chain rock guards, 540 PTO, 6 transport wheels. Municipal owned, good condition, \$9200/ each. Murtaugh, ID. 208-420-4945



110 Gallon Spray Tank: with reel, Honda engine, \$2000. Dallas, OR. 503-787-3512



John Deere 925 drapper header with cart, brand new belts last season, shedded, \$17,000. Caldwell, ID. Brennan 208-989-1952



MF 1428V W/ LOADER
4WD, PS, traction tires available
\$11,500



12' Brown Bear Compost Turner, 3pt PTO driven. Excellent condition. \$15,800 \$12,000
Freeman 370T Baler, field ready.....\$12,500



Farmland Tractor Supply