

887 Irrigation Equip.

150HP Turbine Pump, motor, bowls and 100' of 10" column, \$10,000. Burns, OR. 541-493-2772

Used valley circle, 7 spans, 18' overhang, pivot point, model 800 pivot panel, 11x24.5 tires, loaded on trailer, ready to travel. Aluminum handline. Need to sell, offers considered. Pasco, WA. 509-948-3964, 509-547-9682

Handline: 3x40' wade rain drop lock, \$1500 per 1/4 mile. 3x30' box lock, \$20 each. Caldwell, ID. 208-412-9890

Hook and Latch Irrigation, 100 pieces, 3"x40' with 2' risers and sprinklers, \$60/ each. 40 pieces 4"x30' main line, \$30/ each. Lots of 3' and 4' tees, valves and miscellaneous. Carnation, WA. 425-549-0700, cheryl@remlingerfarms.com



Westinghouse pump: Item #DO7178K. 100 HP, 480/ 277v, 3ph 1.5k gpm steel. Dimensions: 150"L x 55"W x 45"H. Color: green/ gray. Made in USA, can be used for irrigation or a small hydrant network. Well maintained. Item was used as a fire system pump. Pump and motor assembly produced 1500 gpm for a small hydrant network. Good condition, light use. Includes soft start controller and panel, \$7800 OBO. Seller can load, buyer pays shipping. Ferndale, WA. 360-380-2907

Evergreen Traveler, 1600' of 4" hose, computer, \$21,000. Toledo, WA. 360-751-3254

1500' of 6" main line: \$2.50/ foot, 3240' of 8" ring lock, \$3.50/ foot, 30HP turbine pump with 4 stage 800 gallon bowls, \$2500, 40HP Berkeley booster pump, \$1000. Bonanza, OR. 541-892-5026, 541-892-3384

(1000) joints 3"x30' drop lock irrigation pipe, \$36/ joint. Malin, OR. 541-891-7754

(60) Used Pivots: Engines, pumps. Garden Valley, ID. Call Mike at 208-420-1480, or see www.pivotsplus.com

20"x4" Suction line with foot valve, \$50. (20) 4' risers, \$3 each. 680'x2" pipe, \$.75/ foot. 1900'x4" pipe, \$1.25/ foot. Sherwood, OR. 503-936-4483

Used 3" Aluminum Sprinklers

(1018) 3"x40' Travis Drop- Lock with 30' riser and #30 EP Rainbird sprinkler with 7/64" nozzle. (17) 4"x3"x3" VOT. (34) Drop- Lock end plugs, \$40,000. Negotiable. Merrill, OR. 503-801-3922 cathyngilvray1948@gmail.com

Berkeley 15HP Irrigation Pump: 3 phase electric with intake, discharge, suction, valves and primer pump, \$1500 OBO. Pleasant Hill, OR. 541-915-9421

Pivots: Good, various lengths, all brands & late models. No rust. Plus buried wire. Call Keizer, OR. Cell 503-881-3232, 503-390-3210

(2) 25 hp suction pumps available. Both in good condition. Both are triple phase 230/460 volt, \$2,800 each OBO. Cornelius, OR. 503-263-4040

Diesel Irrigation Pump
• 400gpm at 140psi
• Kohler 4 cylinder: 78hp
• 125 gallon fuel tank
• Suction crane
• Engine/ pump panel: \$ 22,900
www.idrofogliausa.com 360-393-4923

887 Irrigation Equip.

Irrigation Travelers
•Idrofoglia Reels Made in Italy
•Wide Selection of Sizes
•Stocked In Lynden, WA
Special Prices:
3.7" x 1320' with Gun: \$31,700
3" x 985' with Gun: \$18,700
2" x 650' with Gun: \$10,500
www.idrofogliausa.com 360-393-4923

LOOK!

5" Western Main Line: approximately 50 pieces, \$125/ each. Eugene, OR. 541-729-9306

900' of 6" ring lock main line: \$2.50/ foot. 1000' of 5" hook and latch main line, \$1.50/ foot. (30) 3"x40' hook and latch hand line, with Nelson impact free heads, \$40/ each, 50 HP pump, \$2500. Pipe trailer, \$500. Discount if you take all! Sprague, WA. 509-995-4512

30HP Cornell Irrigation Pump: excellent condition, like new, \$3700. Amboy, WA. 360-606-6348

PUMP REPAIR & FULL MACHINE SHOP SERVICES OFFERED

Minuteman Machine Services
Greenleaf, ID • 208-860-3278
360-23-4-4110



High Quality Brass Vyrsa Impact Sprinklers

1/2" Part Circle \$15.60
1/2" Full Circle \$11.70
3/4" Part Circle \$25.74
3/4" Full Circle \$14.88

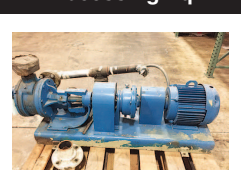
Call For Bulk Pricing and FREE Brochure!

WaterTec
(360) 393-4923
www.watertecna.com
Lynden, WA 23-3109

IRRIGATION EQUIPMENT BOUGHT. SOLD. RENTAL.

Design of Effluent Handling Systems - Gates, Valves & Aerators
New & Used Parts.
• Aluminum Pipe
• Certa-lok
• Siphon Tubes • HDPE
• Sand Media Filters
• Wheel Lines • Pumps
Office: (209) 460-0450
Fax: (209) 982-1832
www.pacosouthwestir.com
Carlos (209) 481-7677
Jim (209) 986-0099
887-23-4-1102

890 Packing/ Processing Eq.



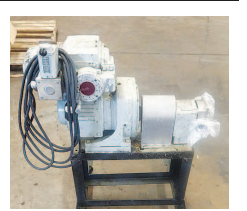
Viking 4125 Rotary 2" pump with 7.5 HP 230/460v 3ph motor, Viking helical gear reduction drive, and pressure relief valve, \$2,000. Eugene, OR. Contact Julie Crooks 541-689-0913

Fruit/ Vegetable Sizer: 4 lane PSI optical color sorter/ sizer. OMS camera system, 22 drops with tray feeders, 16 bagging drops, recently upgraded chain and sole-noid exit ramps, all cross belts included, plus nice 20"x5' hydraulic sorting table. SW, ID. 208-250-4279



Pacer 2" Centrifugal pump Model SE2EL D2 OC with 2hp 208-230/460 volt motor on portable cart, \$200. Eugene, OR. Contact Julie Crooks 541-689-0913

890 Packing/ Processing Eq.



St Regis 2R positive displacement pump with Sterling 1/2 hp variable speed motor & gear reducer, 220/440 volt, forward and reverse controls. Some parts missing, \$400. Eugene, OR. Contact Julie Crooks 541-689-0913

893 Logging Equip.



1967 Kenworth 3000 Gallon Water Tender: Cummins 350HP, pump, 250GPM, rear dump, runs good, operates good, has no power steering, cab is rough, \$8000 OBO. Haines, OR. 541-519-4816



Tree Care tree spade, Model 636, very little use, always stored inside, \$4900. Carnation, WA. 425-549-0700

Clark 666 Log Skidder Clark Drum: recent repairs, \$7000. Molalla, OR. 503-829-8787

894 Sawmill Equip.

TIMBERY SAWMILLS: Made in the USA. Starting at \$2,995. Call 971-271-8070

896 Forklifts

CAT Forklift. Model V60. NEW cylinder, brakes, forks, & propane. 5000lb lift. \$7500 OBO. Goldendale, WA. For information call: (509)773-5598

1995 Taylor: 20,000 lb lift, tall mast, side shift, hydraulic fork positioners, Cummins 5.9 diesel, 3 speed power shift transmission. Would make a great hay squeeze, \$16,500. Creswell, OR. 541-954-4080



FORKLIFTS:
2010 Hyster H-60-FT on air, \$13,250.
2010 Hyster H-80-FT on air, \$13,250.
2000 Hyster H-100XM on DUAL air, \$15,000.
2003 Hyster S-80XM-BCS cushion, \$11,500.
1991 Hyster S-80XL-BCS cushion, \$6,000. McMinnville, OR. Call or text for more info 503-550-7625 Philip



Komatsu FG-25-8, 5000 lb, 3 stage, S/S on air, \$7000. McMinnville, OR. Call or text for more info 503-550-7625 Philip

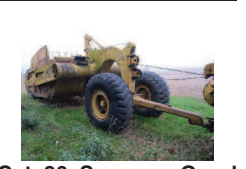


Nissan 50, new drive tires, 2 sets of forks, \$6000. Gaston, OR. 503-662-5401

Used Lift Trucks

Also New & Used Parts All sizes, makes & prices
LIFT TRUCK SERVICE 888-890-1450
forkliftsales.com
Ellensburg, WA 88-23-2701

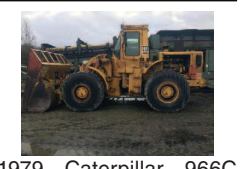
899 Heavy & Indust. Eq.



Cat 80 Scraper: Good condition, 22 yard capacity, \$6,500. Monmouth, OR. 503-932-4979



Komatsu D66S Track-loader, 1987, 4 in 1 bucket with teeth, 3- shank ripper, built up grousers, 44,000 lb., \$23,000. RIP, PILE and LOAD LAND CLEARING MACHINE. Gaston, OR. 503-789-3726



CAT D8K Dozer, good undercarriage and transmission, engine blown, \$19,500. Dayton, OR. 503-260-0303



1979 Caterpillar 966C front end loader, extensive service records, new tires, Gronveld auto grease system, well taken care of with records to show, \$35,000. Redmond, WA. 425-883-0821



International 500C: 4 way bucket, new tracks, rebuilt motor, \$4000. Boring, OR. 503-317-6428

CAT 623-B: Self-loading scraper, good condition, \$39,500. D-6 H U-dozer with tilt and ripper, near new engine and hydraulic pump, \$86,500. Salem, OR. 503-362-3055



BIG SPLASH!
SMALL INVESTMENT. Advertise today.
Capital Press
The West's Ag Weekly
1-800-882-6789
CapitalPress.com

899 Heavy & Indust. Eq.

Hydraulic powered wire tigger, off RO crane, works good. Best offer. Springfield, OR. Larry 541-726-9847



BUYING HEAVY EQUIPMENT
• Forestry • Construction
• Agriculture
New, Old, Running or Not!
\$1,000,000
Any location. Possible finders fee.
Trevor Lesh 971-806-5851
Triton Oregon, LLC



CAT D8K Dozer, good undercarriage and transmission, engine blown, \$19,500. Dayton, OR. 503-260-0303



Terex Manlift TB85: 4x4, 2500 hours, Cummins Diesel, \$27,000. Boring, OR. 503-317-6428



Reliance End Dump: 28', high tailgate and air gate, electric cover, \$17,500. Boring, OR. 503-317-6428

NOW RENTING! CAT-D8T SU
w/3-shank mounted ripper
ATIMACHINERY.COM
888-461-0625
Five Points, CA 23-3107

CASE INDUSTRIAL PARTS
We sell genuine, after market, and used CASE parts at discount prices nationwide. Call For Free Catalog.

CENTRAL EQUIPMENT
AFTER MARKET & USED PARTS
Medford, OR
(888) 593-8749
889-23-541100

Quality Used EQUIPMENT & ATTACHMENTS
• INDUSTRIAL
• COMMERCIAL
Please visit our Website www.amtractor.com for a complete list of Machines and Attachments

American Tractor
Our Toll Free # **888-499-8980**
Call Cameron Noble or Eric Hunt
CENTRAL POINT, OR 23-3100

902 Farm Equip. Parts

CLASSIFIEDS SELL!

BIG TRACTOR PARTS, INC.

~ GEARED FOR THE FUTURE ~

STEIGER TRACTOR SPECIALIST

- 1. We are your source for new & used Steiger drivetrain parts Series 1 - 9300 Series.
- 2. We rebuild Spicer manual transmissions, Fugi power shift transmissions, dropboxes & axle with ONE YEAR WARRANTY!
- 3. We now rebuild computer control boxes for Steiger tractors 1982-1999.

800-982-1769

www.bigtractorparts.com

Call For All Your Parts Needs
Check Out Our New Arrivals on YouTube



New Holland HW325 with HS Header

We have hundreds of pieces in stock. WE SHIP UPS & TRUCK FREIGHT EVERY DAY. ORDERS SHIPPED SAME DAY.

Celebrating 28 years in the agricultural machinery business.
Our yard has 4.5 miles of road, with machinery on both sides. FREE TOURS GIVEN DAILY.

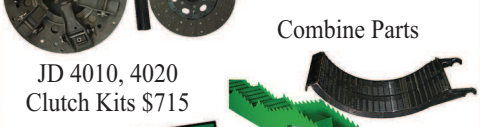
Call Toll Free: **(888) 372-4020**
www.nyssatractor.com
sales@nyssatractor.com
Nyssa Tractor & Implement
Nyssa, OR 23-2108

NEW, USED, AND REMAN PARTS
TOLL FREE: 1-877-928-1646
FARMLAND • 32427 OLD HWY 34, TANGENT, OR 97389

Reman Engines for Case/IH, John Deere, and Ford



Seats w/Air Suspension \$1,025
Combine Parts
JD 4010, 4020 Clutch Kits \$715



SALVAGED TRACTORS
A/C Components



Farmland Tractor Supply
Parts@Farmlandtractor.com

907 Nursery Equip. & Supplies

907 Nursery Equip. & Supplies

COMBINING TECHNOLOGY & TRADITION SINCE 1976
Your local parts experts for more than 40 years!

IN-STOCK SPRAYING AND HYDRAULIC ACCESSORIES

Cylinders • Controllers • Filters • Fittings • Hoses
Motors • Pumps • Seals • Spray Tips • Valves



GK MACHINE CARRIES THE BRAND NAMES YOU CAN TRUST



877-678-5525 • www.gkmachine.com
10590 Donald Road NE • Donald, Oregon 97020 23-2106

902 Farm Equip. Parts

Starters, alternators, and generators. Call 503-364-3650 or visit Walz's Rebuilt - 348 Market St. NE., Salem, OR.

905 Antique Farm Eq. & Parts



Antique Water Pumping Windmills: from Iowa farms, completely rebuilt and ready to pump or show. Mulino, OR. 503-348-2378

John Deere Model B tractor, new rear tires/rims, needs restoration. Two hit/ miss engines. John Deere/ Van Brunt horse drawn grain drill, \$150 OBO. Gaston, OR. Leave Message 503-985-9550

Lindeman crawler with blade, all original, excellent condition, \$8900. Yakima, WA. 509-833-9635

1957 720 John Deere diesel tractor, wide front, 3 point, new tires, direct electric start. Nice running tractor, \$6500 OBO. Long Creek, OR. 541-620-8031 leave message

907 Nursery Equip. & Supplies

FRESH SAWDUST: Consistently fair pricing. Forest-Grove, OR. For pricing call 503-849-0216



Greenhouses: (2) 30'x150', Harnois Ovaltech II, includes heaters, fan jets, HAF fans, exhaust fans, shutters, crop supports, Bartlett controls. Set for double poly and roll up side walls, \$8,000/ each. Puyallup, WA. 253-686-1621

A picture is worth a 1,000 words



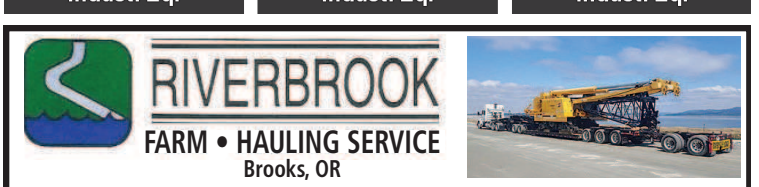
Add a full color photo to your print and online ad.

Capital Press
The West's Ag Weekly
800-882-6789
CapitalPress.com

899 Heavy & Indust. Eq.

899 Heavy & Indust. Eq.

899 Heavy & Indust. Eq.



WE HAUL!

- Building Supplies • Farm Equipment
- Construction Equipment • Heavy Equipment
- Granular Fertilizer • Grain/Wheat



888-393-1819 • www.riverbrooktrucking.com 23-3106

Oregon Valley Greenhouses INC.



30 x 96 Semi Gable 6' On Center 4' Sides Bows 1 7/8" 13 ga. Prices Starting at \$2699
20357 HWY 99E # AURORA, OR 97002
503-678-2700 # www.ovg.com # kips@ovg.com 23-2106