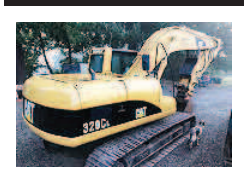


899 Heavy & Indust. Eq.



2000 320 CL CAT Excavator: 10,036 Hours SN OALF00193. New paint, no leaks, recently rebushed, new heads, pin grabber, QC, AC, Stereo. Good under carriage. Nice running tight machine with 3 Buckets. \$20,000+ of work done by Peterson CAT, Chris 503-793-6107

CAT D8H 46A: SN#9720, u blade, zipper, good condition, \$27,500. Silver Lake, OR. 541-576-2440

New 8' Brush Rakes: with mounting brackets, \$1250 each. Clackamas Tractor, Clackamas, OR. 503-655-1125



2013 CAT 305E excavator, 3675 hours, thumb, \$35,000. Cat 305C excavator, 2800 hours, nice tracks, \$30,000. Silverton, OR. 503-932-0766



Komatsu 220-6: Cummins engine, hydraulic QC thumb and guarding, \$22,500. Estacada, OR. 503-407-3055, 503-407-9058



JOHN DEERE 455D CRAWLER: 4-1 BUCKET, REAR 2 SHANK RIPPER. RUNS GOOD, STORED INSIDE. SOLD AS IS, \$12,900. OTHER PICTURES AVAILABLE. MULINO, OR. 503-632-3754

CAT 623-B: Self-loading scraper, good condition, \$39,500. D-6 H U-dozer with tilt and ripper, near new engine and hydraulic pump, \$86,500. Salem, OR. 503-362-3055

EX-100 Hitachi Excavator: blade, articulating boom, \$9500. Boring, OR. 503-317-6428



1995 Taylor Forklift Loaded Trailer/ Container Handler. 90,000 lbs. lift, 294" Max Lift Height, 3 high stacking, Cummins NTH855, 4,510 hours. Runs & Works Real Nice, \$125,000. Spokane, WA. 503-545-0007

ATI Machinery, Inc. 1-888-461-0625 Five Points, CA Serving CA & AZ Farmers since 1975

902 Farm Equip. Parts

BIG TRACTOR PARTS, INC. ~ GEARED FOR THE FUTURE ~ STEIGER TRACTOR SPECIALIST

907 Nursery Equip. & Supplies

899 Heavy & Indust. Eq.



1982 John Deere Motor Grader 570: new motor with approximately 500 hours, front blade. Used by State of Oregon, \$26,500. Coos Bay, OR. 541-294-6673



1997 JCB Backhoe: 4WD, 4500 hours, extendahoe with extra bucket, quick connect, 4-1 loader bucket on front. Used by Oregon Water Board, \$26,000. Coos Bay, OR. 541-294-6673



2008 JCB Agri plus 541-70 Telehandler, 4900 hours. Good condition. Just completed major service by Brim Tractor. No attachments. Air conditioning, radio, \$48,000. Great loader for a grass seed warehouse. Harrisburg, OR. 541-915-0792



2000 John Deere 650H LGP, OROPS, multi shank rippers, good U/C, \$37,500. Lebanon, OR. 530-417-2661



2006 Cat D6N LGP, EROPS, 6 way blade, hitch, excellent U/C, \$75,000. Lebanon, OR. 530-417-2661

CASE INDUSTRIAL PARTS We sell genuine, after market, and used CASE parts at discount prices nationwide. Call For Free Catalog.

DON PEILA TRACTOR REPAIR • PARTS specializing in JOHN DEERE INDUSTRIAL EQUIPMENT

NEW, USED, AND REMAN PARTS TOLL FREE: 1-877-928-1646

Farmland Tractor Supply Parts@Farmlandtractor.com

Combine Parts, Rebuild Kits, Reman Engines for Case/IH, John Deere, and Ford

907 Nursery Equip. & Supplies

902 Farm Equip. Parts



Hutchinson 40' portable grain elevator with out motor, elevator is in good condition, \$850. Lakeview, OR. Bill 541-417-0172

905 Antique Farm Eq. & Parts

Styled Letter Series John Deere Tractors: LA to R, 1941 to 1952. Quincy, WA. 509-787-3424



1950 Allis Chalmers WD wide front tractor; rebuilt engine, all new rims and tires, new lights and battery. Nice original tractor, \$2,500. Long Beach, WA. 503-407-7984 or email: bobh@willapabay.org

Case IH8840 Swather: 1450 hours, 12' specialty crop header, UHMW lined \$12,000. Banks, OR. 503-314-8484

902 Farm Equip. Parts

Call For All Your Parts Needs Check Out Our New Arrivals on YouTube JD 8430 With 1500 Series Axle

NEW, USED, AND REMAN PARTS TOLL FREE: 1-877-928-1646

Farmland Tractor Supply Parts@Farmlandtractor.com

907 Nursery Equip. & Supplies

905 Antique Farm Eq. & Parts



(4) antique non running project tractors, make offer. Lakeview, OR. 541-417-0172

907 Nursery Equip. & Supplies

FRESH SAWDUST: Consistently fair pricing. Forest-Grove, OR. For pricing call 503-849-0216

USED NURSERY CONTAINERS:

Used, but reusable nursery containers. All sizes. Inventory changes daily. Call for current availability and prices. Sawyer Farms, Scio OR. 503-769-3417, juddsfarm@wvi.com

911 Hay Equip.

Case IH8840 Swather: 1450 hours, 12' specialty crop header, UHMW lined \$12,000. Banks, OR. 503-314-8484

Hesston 1 Ton Feeder: Model 4720, \$3250. Freeman 5300 Bale Wagon, \$67,000 Silver Lake, OR. Call 541-480-3371

New Holland BW28 Bale Wagon: 2000 hours, good condition, \$88,000. Silver Lake, OR. 541-480-3371

902 Farm Equip. Parts

Call For All Your Parts Needs Check Out Our New Arrivals on YouTube JD 8430 With 1500 Series Axle

NEW, USED, AND REMAN PARTS TOLL FREE: 1-877-928-1646

Farmland Tractor Supply Parts@Farmlandtractor.com

907 Nursery Equip. & Supplies

911 Hay Equip.

Freeman 370 Baler: Like new, only baled 27,000 bales, recent \$7,600 overhaul and new paint, hydro, 16" chamber. Sacrifice. Junction City, OR. 541-998-2429

H&S 8' Tedder: 540 PTO driven, good condition, \$2300. Reasonable Offers. Culver, OR. 509-250-2846

Sitrex 3 Point PTO Side Delivery Rake, \$1500. New Holland 426 Baler, \$6000. New Holland 1036 Bale Wagon, \$12,500. Flatbed Tilt Trailer (2) 5500 lb. axles, \$3500. Rotary 3 Point Disc Mower, 6'8", \$3500. 600 Gallon Fuel Tank, on stand, \$600. Yakima, WA. 509-728-6791, ronf@frankstirefactory.com

2003 Challenger LB33 3x3 baler, 39,000 bales, bale skis, knotter fan, excellent condition, \$24,500. Corvallis, OR. 541-760-8809

911 Hay Equip.

2007 Twinstar 2030 G2 Rake: 5 Bar Basket, Ready To Go, \$20,000. Harrah, WA. 509-728-2701



2011 New Holland H8080 Swather: with 416, 16' disc-bine header. Deluxe cab, electric mirrors, 1700 hours. Good condition, new conditioner in 2015, field ready. PRICE REDUCED \$79,500. Lakeview, OR. 541-219-0741

2007 Twinstar 2027, excellent condition, stored inside, \$9900. Albany, OR. Call Steve at 541-979-0118

911 Hay Equip.

1495 New Holland swather: 12' header, good rollers, good running machine, field ready, \$10,500 OBO. Enterprise, OR. 541-426-4825

John Deere 100 baler: 3x3, new rebuilt pick up header, always shedded, and cleaned out, good running baller, \$12,500 OBO. Enterprise, OR. 541-426-4825

(2) PhiBer Big Bail Accumulators Model AC4104: Purchased New in 2011. Light use. For use with New Holland 3x4 Balers. \$23,000 & \$25,000. Contact Scott: 541-280-1605. Fort-Rock, OR.

Used New Holland BW28 bale wagon, excellent condition, 1 owner, \$90,000. (2) New Holland BB900 balers, \$14,500 each. (1) New Holland BB900, 592 hours, excellent condition, \$27,000. Woodburn, OR. Greg Wilmes 503-969-8705

BB900 New Holland Baler, 3- tie, 970 hours, excellent condition, \$19,500 OBO. John Deere 4230, 105HP, duals, weights, fresh paint, \$14,000 OBO. Super 1048 Harrow Bed, \$12,000. Lakeview, OR. 530-227-5700

New Holland 595: 3x4 baler. Moisture Sensor. Single axle. 30k bales. Runs smooth. Clean and ready for the season. Fully maintained and repaired at end of every year, \$10,000 OBO. Spokane, WA. 509-796-3601

2011 New Holland BC5080 3 tie baler: 14x22 chamber, hay saver wheel, like new, \$25,000. Sisters, OR. 541-740-7180

1049 New Holland Balewagon. Mechanically sound and field ready! \$18,000. Madras, OR. 541-480-0909

(2) 5080 New Holland Balers. Field ready, mechanically gone through after every season. \$20,000 each OBO. Madras, OR. 541-480-0909

907 Nursery Equip. & Supplies

911 Hay Equip.

www.jonspipeandsupply.com has Monster Hay Feeders: designed for big bales, saves 30 percent of hay, pays for itself first year. 10 year warranty. Call Jon 530-949-2285

2001 New Holland 1431 discbine: with conditioner, \$6500. Dallas, OR. 503-931-3724



2013 Twinstar 2030 G2 Rake: 5 Bar Basket, Ready To Go, \$20,000. Harrah, WA. 509-728-2701



2011 New Holland H8080 Swather: with 416, 16' disc-bine header. Deluxe cab, electric mirrors, 1700 hours. Good condition, new conditioner in 2015, field ready. PRICE REDUCED \$79,500. Lakeview, OR. 541-219-0741

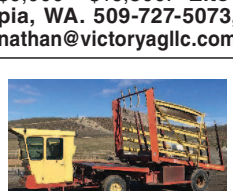
Steffens 8 bale accumulator, like new, \$8500 OBO. 1046 Harrow bed, project, best offer. Lyle, WA. 509-365-4429, 509-281-2155



2017 Kuhn 8702T G2 Tedder: Very little use, \$14,500 OBO Fortuna CA 707-845-8960

911 Hay Equip.

Freeman 370 Hay Balers: 3 Freeman 370 hay balers and 2 Freeman 330 hay balers. Through the shop and will be ready to go to the field. Three of the balers had rebuilt engines in 2017. Prices: \$9,000- \$16,500. Eltopia, WA. 509-727-5073, nathan@victoryagllc.com



New Holland 1068 bale wagon: Perkins diesel, manual transmission, air. Rear tires replaced 2017. Front tires and clutch replaced 2016. Ready to go to work, \$23,000. Wapato, WA. 509-307-2259



New Holland 272 2 string baler PTO drive. Good shape, \$2500. Lebanon, OR. 541-619-7188

New And Used Parts: for all models New Holland bale wagons. Largest inventory in North America. Sod Busters Sales, Polson, MT. 877-735-2108 or 406-883-2118



1994 Volvo, rebuilt N14 465 HP, Cummings engine, 18 speed, blue-tooth, ac, ps, cruise, new tires, new air bags and brake cans, slack adjusters, 40' and 24' outside frame trailers, always shedded, owner/operator, excellent condition, \$42,500. Will sell together or separate. Othello, WA. 509-760-3276



911 Hay Equip.

John Deere 4890 Swather: 2001, 890 16 foot header with reverser, steel roller conditioner, 1052 hours. Superb, nearly new condition inside and out, \$41,000. Kennewick, WA. Text for photos 509-948-2564.



1999 New Holland 595 Baler: Serial #724083034, 3x4 bales, with harvest tech, new bearings and gears in gearbox, \$11,000. Fields, OR. 503-799-2677



2012 New Holland BR7090 Twine Round Baler: wide hydraulic pickup flotation tires. Good condition, \$18,999. Lakeview, OR. 541-219-0741

911 Hay Equip.

New Holland 1030 Stacker: pull type, 2 tie and 3 tie, fully reconditioned and field ready. Probably the nicest one available, \$11,500. Kennewick, WA. Text for photos 509-948-2564.

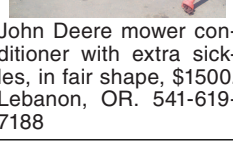


KUHN GA7822: side delivery rakes, 24ft adjustable swath and ability to make double windrows. Rotating assemblies rebuilt in 2017. Two rakes available. \$16,000/each. Mount Vernon, WA. 360-223-9449

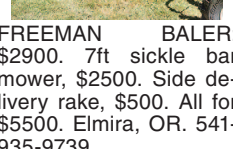
Late 1990s Hesston 4755 Big baler. Silage special, bales 3x3 bales, bale ejector. Computer works great and has hay saver application system. Baler could use a little TLC but is still in working condition. Some spare parts available. Used every year for the last 10 years. Asking \$9,000 OBO. Contact Jacob 425-328-0412



John Deere mower conditioner with extra sickles, in fair shape, \$1500. Lebanon, OR. 541-619-7188

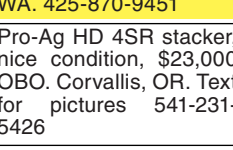


FREEMAN BALER: \$2900. 7ft sickle bar mower, \$2500. Side delivery rake, \$500. All for \$5500. Elmira, OR. 541-935-9739



2014 Krone EC4013CV: mower conditioner. Excellent condition, only used for 2.5 years, \$20,000. Snohomish, WA. 425-870-9451

Pro-Ag HD 4SR stacker, nice condition, \$23,000 OBO. Corvallis, OR. Text for pictures 541-231-5426



1999 New Holland 585 baler, 1768 hours, \$9,000. New Holland 1075 stacker, 5095 hours, \$22,000. Fields OR. 503-799-2677



Hesston 7434 3x4 baler, field ready, \$26,500. Fort Rock, OR. 541-480-3024

REDUCED PRICE



International Chassis, Cummins M11, Allison transmission. Can stack 3x3, 3x4, 4x4, strings down or on end. Lots of extras, \$35,000. Burns, OR. Call or text 541-589-5805



New Holland 1068 bale wagon, Ford 460 engine, 4x2 transmission, \$12,850. Oregon City, OR. 503-631-3411

RETIRING: 2004 International LBX432 3x4 baler, low bale count, excellent condition, \$35,000. H&S AR1261 rake new in 2015, \$8500. Bonanza, OR. 541-892-5682



New Holland HT154 Twin Wheel Rake: great condition, \$8000. Tenino, WA. 360-481-6449



2006 New Holland 1432 13' mower/ conditioner, field ready, \$10,000. Tenino, WA. 360-481-6449

Large Supply of Rebuilt New Holland Bale Wagons: Also buying New Holland bale wagons. Sod Busters Sales, Polson, MT. 406-883-2118

"BEST FARM PAPER AROUND!" Gerald Stanton • Granite Falls, Wash. Subscriber Call 1-800-882-8789

911 Hay Equip.

2745 Massey Ferguson tractor, Kuhn disk mower, 530 round baler + extras, \$25,000. North Bend, OR. 541-751-8021

#1 Balewagons: Buy, Sell, New Holland 2&3 wide self-propelled, pull-type models, parts, tires, manuals. Caldwell, ID. 208-880-2889 www.balewagon.com



Ultimate Alfalfa 2 tie baling setup, 2016 Staheli West 6210 steamer, SwingMax hitch, (2) 1841 balers, water softener, \$250,000. Steamer and 2270 baler, \$260,000. Steamer only with hardware and accessories, \$190,000. Tractor setup for steamer also available. Training available. Bend, OR. 541-316-8775

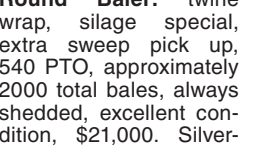
Bunk hay feeders 12'x4' on skidders, \$425. Hay feeding wagon, fits 4 large bales, highway usable, \$1200. Oregon City, OR. 503-655-6466

489 New Holland Hay conditioner, 9', pull type, field ready, \$4400. Will negotiate. Scio, OR. 503-931-9244

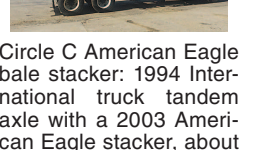
CAT V-180 Hay Squeezer: Sunny D clamp, Ford V8 engine, no leaks, runs good, \$21,000 OBO. Silverlake, OR. 541-576-2552

Freeman 200T Small Baler: 540 PTO, 16x18, field ready, \$3500. Silverlake, OR. 541-576-2552

New Holland BR7060 Round Baler: twine wrap, silage special, extra sweep pick up, 540 PTO, approximately 2000 total bales, always shedded, excellent condition, \$21,000. Silverlake, OR. 541-576-2552



Circle C American Eagle bale stacker: 1994 International truck tandem axle with a 2003 American Eagle stacker, about 60,000 bale count, field ready, stacks all sizes of large bales. Asking \$55,000 OBO. Woodland, WA. Call or text Jay 360-713-4002



RCO Baits Gophers • Squirrels Voles-Moles Dealer Locator 1-800-214-2248 Harrisburg, OR



914 Potato/ Sugar Beet Equip.



(3) LOGAN 4 ROW POTATO PLANTERS: Cup style, \$5,500 for all 3 planters. Madera, CA. 559-352-1700

917 Orchard/ Vineyard Equip.

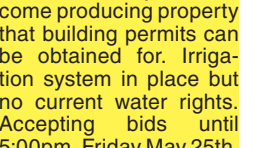


Flory Sweeper 6655, \$25,000. Silverton, OR. 503-932-0766

Don't Miss This One!

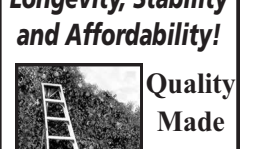


Hazelnut Orchard on NE Fryer Rd in Yamhill/ Carlton area of Yamhill County, Oregon. 39 acres, excellent tier 1 soils with tile drainage installed. 7th Leaf Sacajawea income producing property that building permits can be obtained for. Irrigation system in place but no current water rights. Accepting bids until 5:00pm, Friday May 25th. Minimum bid \$975,000, to place a bid or for more information email: info@creeksidevalleyfarms.com



2006 New Holland 1432 13' mower/ conditioner, field ready, \$10,000. Tenino, WA. 360-481-6449

TALLMAN LADDERS Crafted for Safety, Longevity, Stability and Affordability!



Quality Made in the U.S.A. Since 1954

tallmanladders.com (541) 386-2733 (800) 354-2733

Greenhouse kits, shade cloth, poly-cover, fans, heaters, ventilation and blackout systems! GK MACHINE, INC. 503-678-5525 10590 DONALD RD DONALD OR 97020 www.gkmachine.com ghsales@gkmachine.com