

**826 Organic**  
**Certified Organic Alfalfa**  
 Feeder and Dairy Quality. Tests available. Call for price, includes delivery. Ephrata, WA. 360-305-9798, 509-237-9302

2nd & 3rd Cutting Organic Alfalfa: \$240/ ton. Bonanza, OR. 541-891-8647

**828 Misc for Sale**  
 Pallets: 48"x60", used, \$14 each OBO. Cornelius, OR. Jeff 503-341-4289

**Grass Seed Pallets:** approximately 300, 4'x5', \$10 each. Molalla, OR. 503-873-5990, fkaser@onlinenw.com

**869 Livestock Equip. & Supplies**



**NEW, Never Used! Pearson complete chute system.** Chute, head gate, adjustable alley, holding tub, palpating, \$15,000. Finley, CA. 707-245-5989

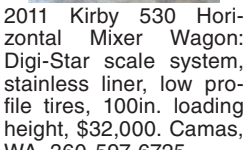
www.jonspipeandsupply.com has Monster Hay Feeders: designed for big bales, saves 30 percent of hay, pays for itself first year. 10 year warranty. Call Jon 530-949-2285

**Custom built portable elk working chute,** \$2800 OBO. Milton Freewater, OR. 541-429-2938



Kraiburg Kura Rubber Livestock Flooring. Used. Approximately 9700 sq.ft. available. Pressure washed and stacked on pallets. Priced per sq.ft. \$1. Camas, WA. 360-597-6725

**Powder River tube panels,** (5) 14' \$185 ea. Othello, WA. 509-760-3276



2011 Kirby 530 Horizontal Mixer Wagon: Digi-Star scale system, stainless liner, low profile tires, 100in. loading height, \$32,000. Camas, WA. 360-597-6725

**Bale Barn Feeders In Stock:** horses or cattle. NW Farm Supply, Hermiston, OR. 800-801-5650 or Mike 541-561-6047

**Livestock Panels:** 16' (6) rail, (3) brace, \$116 each. 12' panels, (6) rail, (2) brace, \$93. Bow gates, all lengths and sizes. These panels are new Green color, hundreds available. **Heavy 16' Feeder Panels,** \$300 each. La Grande, OR. 541-805-9279, 541-963-6258

**Deweze Super Slicer:** round bale feeder, 540 or 1000 PTO, good condition, \$3500. Silverlake, OR. 541-576-2552

**Silencer Squeeze Chute:** Hydraulic 5HP, 1 phase, extra taildoor control, extra left/ right neck access and bars. Has only processed 1500 head, \$11,500. Walla Walla, WA. 509-629-2119

**Need a second corral in your 'outback'?**

13' iron six bar panels \$75, Noble gates 15' to 3', \$250 to \$80. Powder River calf table \$600, squeeze chute \$250, water tanks, 1550 gallon poly water tank \$550. Walla Walla, WA 509-529-7635

**872 Dairy Eq. & Supplies**



6000 Gallon Mueller Milk Tank: two compressors, recorder, tank washer, wash pump, \$30,000. Royal City, WA. 509-346-9308, 509-750-9938



**BIG SPLASH!** SMALL INVESTMENT. Advertise today.

**Capital Press** The West's Ag Weekly  
**1-800-882-6789**  
 CapitalPress.com

**872 Dairy Eq. & Supplies**  
**Kiln Dried Shavings:** truckload/ minimum 18 unit load, Forest Grove, OR. 503-849-0216

**Polydome Calf Nursery:** Hutches available for various climates. West-ern Polydome, Inc. Mon-rore, WA. 800-822-5837

**Hoof Trimming Chute:** \$2500. Royal City, WA. 509-346-9308, 509-750-9938



**Maytag Washer and Whirlpool Dryer:** Commercial Size, \$2500/ pair. Royal City, WA. 509-346-9308, 509-750-9938

**Serge milker:** complete, \$500 OBO. Burns, OR. 541-589-1363



**Complete BouMatic Milking System:** double-12 parallel rapid exit parlor, 4000 gallon. Dari-Kool milk tank with Glacier Guard wash system, cooling compressors, condensers, heat recovery, plate cooler, wash vat with Guardian pipeline wash, receivers with VSD, Air Star vacuum pump with VSD, twin 5HP air compressors with refrigerated air dryer. Vandenberg crown gate. Sold as a complete package, as is and on site. See photos online. \$60,000. Camas, WA. 360-597-6725

**NEW MANURE SPREADER**  
 400 bu. • BUY OR RENT  
 Call Scott at Barr-Tech  
 Compost/Organics Recycling  
 Authorized Dealer of RITE Spreaders  
 509-590-0437  
 www.Barr-Tech.net  
 Sprague, WA

**GOT MILKERS?**



**Celebrate June Dairy Month in Capital Press' 34th Annual Dairy Industry Special Section JUNE 1st, 2018**

Our annual **Dairy Special Section** spotlights dairy operations and operators in California, Idaho, Oregon and Washington. It features an in depth look at the situations and successes - needs and concerns of this dynamic industry.

To reach our print and online readers, contact your sales representative or call **1-800-882-6789**.

Ad space reservation is by Friday, May 4th.

**Capital Press** The West's Ag Weekly  
 PO Box 2048  
 Salem, OR 97308  
**(503) 364-4798**  
**(800) 882-6789**  
 Fax: (503) 364-2692  
 or (503) 370-4383  
 www.capitalpress.com  
 872-15-3/HOU

**875 Tanks & Storage**

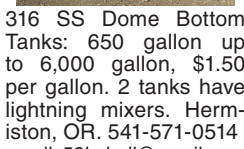


**40,000 Gallon Xerxes Fiberglass Tank.** Used tank in excellent condition. This tank has been used as a temporary septic tank and has been thoroughly cleaned. 40,000 gallon capacity 12' in diameter, 54' 4" long. 16,100 lbs. Single wall tank. Delivery Available. Eatonville, WA. 253-691-1797

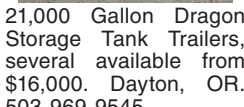
**887 Irrigation Equip.**

**Your Leading Source for Pump & Motor Repairs**  
**HPS Pipe & Supply** On Call 24 hours!  
 On Site or In-house • Motor Rewinds  
 Ag • Commercial • Industrial  
 598 Baseline, Cornelius, OR 97113  
 Phone (503) 357-4217  
 www.hpspipe.com  
 info@hpspipe.com

**875 Tanks & Storage**



316 SS Dome Bottom Tanks: 650 gallon up to 6,000 gallon, \$1.50 per gallon. 2 tanks have lightning mixers. Hermiston, OR. 541-571-0514 email: 53hchull@gmail.com



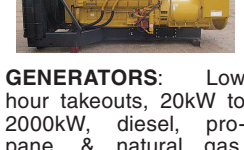
21,000 Gallon Dragon Storage Tank Trailers, several available for \$16,000. Dayton, OR. 503-969-9545

**FUEL TANKS:** 5000 Gallon double walled tank. 5000 Gallon double walled 2 compartment tank (2500/2500). Salem, OR. 503-881-9803

**PLASTIC TOTES:** Like new 275 gallon totes, \$129. Discounts on 6 or more at \$115 each. GloryBee Factory Store, 29548 B Airport Rd, Eugene, OR. 541-689-0919

**55 GALLON DRUM SALE:** Plastic drums \$9.95, Metal drums with open top, \$10. Discounts available on purchase of 10 or more. GloryBee Factory Store, 29548 B Airport Rd, Eugene, OR. 541-689-0919

**878 Generators**



**GENERATORS:** Low hour takeouts, 20kW to 2000kW, diesel, propane, & natural gas. Cooperstown, ND. We ship nationwide. 701-371-9526 or 701-367-4305 abrahamindustrial.com

**881 Shop Equip. & Tools**

**Powermatic 1-1/4" vertical spindle wood shaper,** 7-1/2 HP, 3 phase motor, 1 hp single phase feeder, \$2600. Sweet Home, OR. 541-367-4840



**Wood Fired Boiler:** Heat-Mor stainless steel outdoor furnace. Heats up to 20,000 square feet with 2 loads per day. Lots of extras, \$20,000 OBO. Midvale, ID. 208-355-2234

**887 Irrigation Equip.**

**Cornell 4RB 50HP Pump:** 6" intake, 4" discharge. Works like a plow horse, purrs like a kitten. Excellent. \$3000. Kennewick, WA. 509-948-2564



(12) 316 SS Gould Pumps: with 250 HP motor, 1625 GPM, 300 ft. hd., excellent condition, \$14,950 each. Hermiston, OR. 541-571-0514 email: 53hchull@gmail.com

**Irrigation Pump:** Paco, 50HP, Baldor Super E, 1775RPM, with phase converter/ VFD, like new, ran only part of 2017 season, \$11,300.

**Sand Media Filters:** Fresno - 3x45, number 36 garnet - 3/8" pea gravel, with skid, like new, used one season, \$9850.

**Meter base and fused disconnect,** for 50HP pump, like new, \$750.

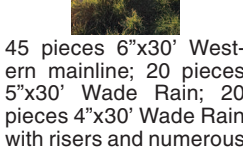
**(2) Stainless Steel Filters,** with poly screen, 800GPM each with 6" Vic fittings, like new, \$1200/ each. Emmett, ID. 208-365-8312

3' x 30' PVC Irrigation pipe in good condition. (500+) sticks available. 50 cents per foot. Reasonable offers considered. 6' sprinklers also available, \$50. Cornelius, OR. 503-263-4040

(2) 25 hp suction pumps available. Both in good condition. Both are triple phase 230/460 volt, \$3,000 each OBO. Cornelius, OR. 503-263-4040

10ft. Western Wheel Line 4"x8.5" pipe, levelers good shape, \$5,000. Extra wheels, \$40/ each. Harrah, WA. 509-728-2701

**887 Irrigation Equip.**



45 pieces 6"x30' Western mainline; 20 pieces 5"x30' Wade Rain; 20 pieces 4"x30' Wade Rain with risers and numerous miscellaneous fittings, \$1 to \$2.50/ foot, OBO. Benton City, WA. 509-521-2484

**(60) Used Pivots:** Engines, pumps, Garden Valley, ID. Call Mike at 208-420-1480, or see www.pivotsplus.com

**JOHNSON GEAR HEAD (USED) HD-90:** combination right angle drive head BHP 90@1750 RPM. **WAKE-SHA VFD310U DIESEL ENGINE** size 3-7/8 x 4-3/8 spec g-31425 gov speed 1800 ld 85.5 hours on meter. **US VHS MOTOR (USED)** 75HP 3PH 230/460V frame 365TP, type RU NRR. **ALL USED:** 11PCS x 10' 8" TURBINE COLUMN. 1PC x 5' 8" TURBINE COLUMN. 1 8x8 DISCHARGE HEAD with 5' column, will need new spider bearings and line shaft. **JACUZZI 8LC LS TURBINE.** Condition unknown. Was pumping water when pulled from well. \$4000 OBO. MIKE Salem, OR. 503-390-2841

**NETAFIM 2": 30" space polynert, Netafim flow meter, clamps/ connectors, driptape connectors new.** One season use, \$700 OBO. Smith, NV. 775-465-2466

**Pivots:** Good, various lengths, all brands & late models. No rust. Plus some pivot parts, and buried wire. Call Keizer, OR. 503-881-3232, 503-390-3210



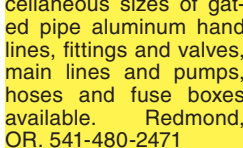
**Berkeley 15HP Irrigation Pump:** with intake, discharge, suction, valves and primer pump, \$2000. Pleasant Hill, OR. (541)915-9421

**Wade Rain:** 5"x30' mainline. Moore Rain 5"x30' mainline. Wade Rain 3"x40' laterals with sprinklers. Miscellaneous 3"x40' laterals with sprinklers and valve openers and miscellaneous fittings. Tangent, OR. 541-979-8629

**Motivated Seller of Irrigation Equipment:** Miscellaneous sizes of gated pipe aluminum hand lines, fittings and valves, main lines and pumps, hoses and fuse boxes available. Redmond, OR. 541-480-2471

**Irrigation Travelers** •Idrofoglia Reels Made in Italy  
 •Wide Selection of Sizes  
 •Stocked in Lynden, WA  
**Special Prices:**  
 3.7' x 1320' with Gun: \$31,700  
 3' x 985' with Gun: \$18,700  
 2' x 650' with Gun: \$10,500  
 www.idrofogliusa.com  
 360-393-4923

**Diesel Irrigation Pump** •400gpm at 140psi  
 •Kohler 4 cylinder: 78hp  
 •125 gallon fuel tank  
 •Suction crane  
 •Engine/ pump panel: \$ 22,900  
 www.idrofogliusa.com  
 360-393-4923



2012 Hyundai 770-9 wheel loader equipped with 10 yard light material bucket or GP bucket available, quick coupler, 350 original hours, \$175,000. Portland, OR. 503-519-3218

**DW-21 Caterpillar Scraper:** it runs, \$4000 OBO. Paulina, OR. 541-477-3185

**Don't Miss This One!**  
 D8K Cat 4 bale ripper, SU dozer, \$25,000. Yakima, WA. 509-949-2065

**902 Farm Equip. Parts**

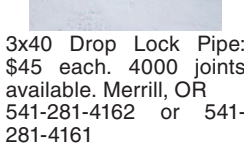
**High Quality Brass Vyrsa Impact Sprinklers**  
 1/2" Part Circle \$15.60  
 1/2" Full Circle \$11.70  
 3/4" Part Circle \$25.74  
 3/4" Full Circle \$14.88  
 Call For Bulk Pricing and FREE Brochure!  
**WaterTec**  
 (360) 393-4923  
 www.watertecna.com  
 Lynden, WA 15-3/109

**899 Heavy & Indust. Eq.**

**899 Heavy & Indust. Eq.**

**899 Heavy & Indust. Eq.**

**887 Irrigation Equip.**



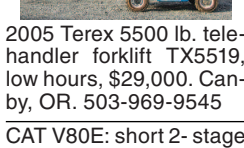
3x40 Drop Lock Pipe: \$45 each. 4000 joints available. Merrill, OR 541-281-4162 or 541-281-4161

**890 Packing/ Processing Eq.**

**VEGETABLE PACKING LINE** 32" wide, washer brushes, roller grader table, 4 sizes, VFD electrical, even flow tub. Excellent condition, \$22,500 OBO. Madera, CA. 559-352-1700

**Fruit/ Vegetable Sizer:** 4 lane PSI optical color sorter/ sizer. OMS camera system, 22 drops with tray feeders, 16 bagging drops, recently upgraded chain and sole-noid exit ramps, all cross belts included, plus nice 20'x5' hydraulic sorting table. SW, ID. 208-250-4279

**896 Forklifts**



2005 Terex 5500 lb. telehandler forklift TX5519, low hours, \$29,000. Canby, OR. 503-969-9545

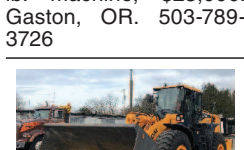
**CAT V80E:** short 2-stage mast with free lift and side shift, LP power, solid pneumatic single tires, \$7500. Gaston, OR. 503-789-3726

**Hyster S-40XM** with Cascade rotator, excellent condition, ready for your harvest, \$7200. McMinnville, OR. 503-550-7625

**899 Heavy & Indust. Eq.**



1991 Kobelco LK650: 3.5 yard bucket, smooth edge, good tires, tight machine, 153 hp, 31,500 lb. machine, \$25,000. Gaston, OR. 503-789-3726



2012 Hyundai 770-9 wheel loader equipped with 10 yard light material bucket or GP bucket available, quick coupler, 350 original hours, \$175,000. Portland, OR. 503-519-3218

**Quality Used EQUIPMENT & ATTACHMENTS**  
 • INDUSTRIAL  
 • COMMERCIAL  
 Please visit our Website [www.amtractor.com](http://www.amtractor.com) for a complete list of Machines and Attachments

**American Tractor**  
 Our Toll Free # **888-499-8980**  
 Call Cameron Noble or Eric Hunt  
 CENTRAL POINT, OR

**902 Farm Equip. Parts**

**902 Farm Equip. Parts**

**NEW & USED OLIVER & CLETRAC**  
**Crawler Parts Our Specialty**  
**ZIMMERMAN OLIVER-CLETRAC**  
 1450 Diamond Station Rd. • Ephrata, PA 17522  
**717-738-2573**  
 Fax 717-733-3529  
 www.olivercletrac.com

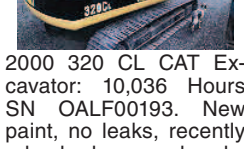
**899 Heavy & Indust. Eq.**

**899 Heavy & Indust. Eq.**

**899 Heavy & Indust. Eq.**

**899 Heavy & Indust. Eq.**

**Excavator Buckets and Attachments:** used equipment, compaction wheels, hydraulic hammers. Most Makes/ Models. Portland, OR. 503-313-7922



2000 320 CL CAT Excavator: 10,036 Hours SN OALF00193. New paint, no leaks, recently rebushed, new heads, pin grabber, QC, AC, Stereo. Good under carriage. Nice running tight machine with 3 Buckets. \$20,000+ of work done by Peterson CAT, \$75,000. St. Paul, OR. Chris 503-793-6107

**CAT D8H 46A: SN#9720,** u blade, ripper, good condition, \$27,500. Silver Lake, OR. 541-576-2440

**CAT 623-B:** Self-loading scraper, good condition, \$39,500. **D-6 H U-dozer** with tilt and ripper, near new engine and hydraulic pump, \$86,500. Salem, OR. 503-362-3055



John Deere 310 D Turbo Extendahoe: 4x4, 3 buckets 12", 18" and 24", 5083 hours, good tires, excellent condition, \$19,000. Wilton, CA. Call 916-687-7379



**Komatsu D66S Track-loader,** 1987, 4 in 1 bucket with teeth, 3- shank ripper, built up grousers, 44,000 lb., \$23,000. RIP, PILE and LOAD LAND CLEARING MACHINE. Gaston, OR. 503-789-3726



2013 CAT 305E excavator, 3675 hours, thumb, \$35,000. 2010 CAT 305D excavator, 3870 hours, thumb, \$33,000. Silverton, OR. 503-932-0766

**CASE INDUSTRIAL PARTS**  
 We sell genuine, after market, and used CASE parts at discount prices nationwide. Call For Free Catalog.

**CENTRAL EQUIPMENT AFTER MARKET & USED PARTS**  
 Medford, OR  
**(888) 593-8749**

**NOW RENTING! CAT-D8T SU**  
 w/3-shank mounted ripper  
**ATIMACHINERY.COM**  
**888-461-0625**  
 Five Points, CA 15-3/107

**American Tractor**  
 Our Toll Free # **888-499-8980**  
 Call Cameron Noble or Eric Hunt  
 CENTRAL POINT, OR

**902 Farm Equip. Parts**

**902 Farm Equip. Parts**

**902 Farm Equip. Parts**

**902 Farm Equip. Parts**

**902 Farm Equip. Parts**

**902 Farm Equip. Parts**

**902 Farm Equip. Parts**

**902 Farm Equip. Parts**

**902 Farm Equip. Parts**

**902 Farm Equip. Parts**

**902 Farm Equip. Parts**

**902 Farm Equip. Parts**

**902 Farm Equip. Parts**

**902 Farm Equip. Parts**

**902 Farm Equip. Parts**

**902 Farm Equip. Parts**

**902 Farm Equip. Parts**

**902 Farm Equip. Parts**

**902 Farm Equip. Parts**

**902 Farm Equip. Parts**

**902 Farm Equip. Parts**

**902 Farm Equip. Parts**

**902 Farm Equip. Parts**

**902 Farm Equip. Parts**