

923 Farm Equipment

8870 John Deere Tractor, 4400 hours, excellent condition, very clean, \$55,000. Rickreall, OR. 503-930-1904

John Deere 8820: rebuilt engine, spike tooth, belt pickup. Excellent condition, \$15,500. Rickreall, OR. 503-930-1904



1997 Case IH 2188 Combine. Price includes: 8 row 30" corn header, 22' grain header, \$20,000. Nyssa, OR. 541-372-2329



2016 John Deere 3975 Pull-Type Forage Harvester: like new, used two seasons, spout extensions, hydro tongue positioner. No kernel processor, no magnet. Includes 7' grass head and 2 row corn head. Heads are older than chopper but in great condition. Field ready, \$40,000. Camas, WA. 360-597-6725



John Deere 7000 Pull-Type Corn Planter: 4 row, 30in. Perfect working condition, \$2,700. Camas, WA. 360-597-6725



Parker 614 Grain Wagon: hydraulic auger, 24.5-32 tractor tires, \$9,500. Lapwai, ID. 208-816-9700

MacDon 9000 and 9300 windrowers. They both have 16' 930 grass seed special headers, new drive tires and extra sickles. They are field ready. The 9000 is \$15000 and 9300 is \$12000 OBO. Junction City, OR. 541-913-1486



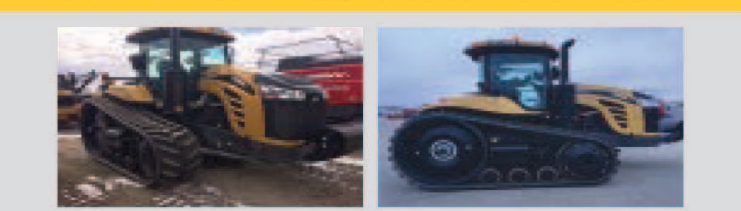
Uebler manure spreader, restored. Stored indoors, works well, \$1600. Albany, OR. 541-967-9356

923 Farm Equipment

Challenger MT700 SERIES INTELLIGENT FARMING

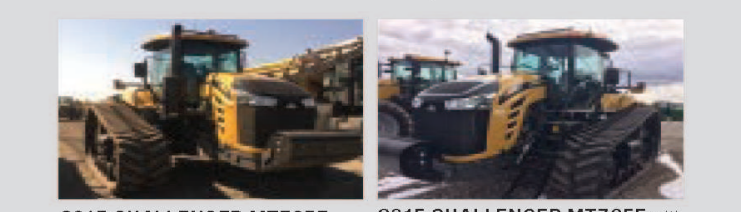
THE TRACK TRACTOR FOR PEOPLE WHO MEAN BUSINESS.

FREE DELIVERY ANYWHERE IN THE U.S.!



2015 CHALLENGER MT765E with 30" extreme belts, 5 valves, no 3-point hitch, 85 GPM pump, deluxe cab, 7 hours (Stock #U016570) **\$290,500**

2015 CHALLENGER MT765E 25" chevron tracks, 6 hydraulic valves, 3-point hitch, 85 GPM pump, wide gauge 80"-120", Trimble TMX WAAS, 150 hours (Stock #M013599) **\$313,500**



2015 CHALLENGER MT765E with 30" extreme belts, wide gauge 80"-120", 5 hydraulic valves, GPM flow, Trimble TMS with RTK, 269 hours (Stock #T016567) **\$278,500**

2015 CHALLENGER MT765E with 30" extreme belts, 5 valves, no 3-point hitch, 252 hours (Stock #T016568) **\$276,500**



2015 CHALLENGER MT755E with 30" extreme belts, 4 valves, 85 GPM hydraulic pump, no 3-point hitch, 5 hours (Stock #U016565) **\$278,500**

2015 CHALLENGER MT755E with 30" extreme belts, 4 valves, no 3-point hitch, 17 hours (Stock #U016566) **\$270,000**

AGRI-SERVICE Together, we drive agriculture FORWARD

Agri-Service.com

JORDAN KITE
435-770-7850
jordankite@agri-service.com

©2018 AGCO Corporation. Challenger is a worldwide brand of AGCO Corporation. Challenger, Cat and Caterpillar are trademarks of Caterpillar Inc. and are used under license by AGCO. AGCO is a trademark of AGCO. All rights reserved.

14-1/108

CLASSIFIED ADS SELL!
Advertise Today!
1-800-882-6789 • CapitalPress.com

923 Farm Equipment

Made For Work!

4x4 Mini Trucks

www.cape-ape.com
503-842-4145
923-14-4-1/108

923 Farm Equipment

Strawberry picker, 3 row, fresh market or cannery. No photos available, on site only. Silverton, OR. 503-881-7602

Howard Rotavator Model HR 16, \$900 OBO. Silverton, OR. 503-932-5179

WANTED: 1 row potato harvester and 1 row potato planter. OR/ ID 360-931-0536

923 Farm Equipment

John Deere 455 offset disk, new 26" blades on front, good working condition, \$5500. Riley, OR. 541-493-1920

Westfield Grain Auger: 10"x41" on wheels. Used 3 seasons. Excellent condition, \$4500. Molalla, OR. 503-873-5990, fkaser@onlinenw.com

IF YOU HAVE A BEEF - sell it in next week's Capital Press!

923 Farm Equipment

Brillion 10' Seeder: acre meter, 3 point hitch mount, \$14,000. Kuhn Plow: 5 bottom rollover, \$16,000. Castle Rock, WA. 360-749-4422

John Deere 4555 MFWD, 2940 2wd loader, Rears 300 and 400, Wil-Rich 40 ft, Steiger KP-1360. Woodburn, OR. 503-454-8047
www.carlsmithllc.org

Handle more hay with Hesston.

Everything you need for cutting-edge hay performance. Whether you own a few acres or a commercial operation, our small square balers, disc mowers and tedders help you produce more high-quality hay.

Fischer Mill Supply, Inc.
20990 S. Fischer Mill Rd • Oregon City, OR
503-631-3411 • www.fischermillsupply.com

AGCO Your Agriculture Company

©2018 AGCO Corporation. Massey Ferguson is a worldwide brand of AGCO Corporation. Hesston is a brand of AGCO. AGCO, Hesston and Massey Ferguson are trademarks of AGCO. All rights reserved.

NEW TRACTORS		USED TRACTORS	
MF 2705E, 48hp.....	CALL	NH 575 Baler, field ready, Hyd. tension, 1/4 turn chute.....	\$12,500
MF 2706E, 58hp.....	CALL	NH 1068 460 Ford.....	\$14,500 \$12,850
1700 Premium, 36-59hp.....	CALL	Sitrex RP4, wheel rake.....	\$1,250
1700 Economy 26-39hp.....	CALL	Sitrex HM300.....	\$4,695
GC Series Sub compacts.....	CALL	Hesston 3007 5 Disc 3pt mower.....	\$5,250
INDUSTRIAL		TILLAGE	
Hitachi EX 120-2, thumb, 3 buckets.....	\$23,500	IH 8' Tandem Disc.....	\$2,250
Hitachi EX 200 LC-5, 2 bkts & thumb.....	\$52,500	Strawberry Tiller, two head.....	\$2,000
Beuthling B100 Roller, diesel.....	\$2,750	2 Bottom Kverneland Plow.....	\$1,250
HAY SECTION		10' Brillion Pulverizer.....	\$1,750
MF 1842 Baler.....	\$24,500	MISC.	
2016 MF 1838 Baler, field ready.....	\$22,500	Rears 150 gal. Pak-Tank w/AR50 Pump.....	\$2,850
MF DM1305 4 Disc Mower.....	\$5,750	Oliver Superior Manure Spreader, reconditioned.....	\$4,750
NH 5070 2011 14x18, hyd. tension.....	\$15,750	200 Gal. Skid Tank with reel and 300' of hose.....	\$2,800
		New - 55 Gal Fenco Sprayer with boom & handgun.....	\$1,095
		4 Bottom IH Plow.....	\$1,850
		2 Bottom Plows.....	\$350-\$850
		3 Bottom Plows.....	\$450-\$1,200
		Rear Blades, Box Scrapers.....	\$300-\$800
		4' Bottom Plow, semi mount.....	\$1,850
		Howse Rotary Cutters.....	4': \$945, 6': \$1,295
		Post-hole Diggers.....	HD 9": \$895, HD 12": \$995
			18" augers only: \$495
			24" augers only: \$595

SPECIAL!
Woods RCS Rotary Mower...\$1,256

14-3/103

ITS ConGlobal
INTEGRATING INTERMODAL

STORAGE CONTAINERS FOR SALE!

EQUIPMENT TYPES
Containers - We offer 20', 40' and 45' container. Special requests available.

MODIFICATIONS AVAILABLE

- Personnel Doors
- Windows
- Roll Doors
- Vents
- Skylight
- Special Request Modifications

Call Andrew for a Quote Today!
503-265-4106 • email achrest@cgin.com

14-1/103

LANDOLL • WIL-RICH • SUMMERS

NEW & USED EQUIPMENT

Doerfler Tractor SALES COMPANY

12333 Silver Falls Highway SE Phone: (503) 769-2205
Aumsville, OR 97325 Fax: (503) 769-9450

14-3/106

Kubota READY TO TAKE CARE OF BUSINESS.

\$0 DOWN, 0% A.P.R. FINANCING FOR 60 MONTHS*

BRING ON SPRING EVENT

M6 SERIES

RICKREALL Since 1947

Farm Supply
503-623-2365
www.rickfarm.com
130 Main Street
Rickreall, OR 97371

*\$0 Down, 0% A.P.R. financing for up to 60 months on purchases of select new Kubota M6 Series equipment from participating dealers' in-stock inventory is available to qualified purchasers through Kubota Credit Corporation, U.S.A.; subject to credit approval. Some exceptions apply. Example: 60 monthly payments of \$16.67 per \$1,000 financed. Offer expires 6/30/18. See us or go to KubotaUSA.com for more information. Optional equipment may be shown.

KubotaUSA.com
© Kubota Tractor Corporation, 2018

14-2/106