

**902 Farm Equip. Parts**

Starters, alternators, and generators. Call 503-364-3650 or visit Walz's Rebuilt - 348 Market St. NE., Salem, OR.

(12) John Deere suitcase weights off 4440 tractor, \$100 each OBO. Western, OR. 541-336-1442

**905 Antique Farm Eq. & Parts**

1953 Farmall Super C: Completely restored, good tires, original manuals, 3rd owner, runs great. \$4,000. Yakima, WA. (509)945-0714

**John Deere model 40 crawler:** with blade, runs good, \$4500. Also **Massey Ferguson 41** rear mount sickle bar mower, great shape, \$2000. Cathlamet, WA. 360-431-6488

**Collectors Alert!**

**John Deere 30 Series Tractors:** 430, 530, 630, 730 and 830. All Restored. Great Condition. Also **54R, 1950B, 2 dozers with blades.** Grandview, WA. 509-830-4784

**Antique Water Pumping Windmills:** from Iowa farms, completely rebuilt and ready to pump or show. Mulino, OR. 503-348-2378

**907 Nursery Equip. & Supplies**

**USED NURSERY CONTAINERS:**

Used, but reusable nursery containers. All sizes. Inventory changes daily. Call for current availability and prices. Sawyer Farms, Scio OR. 503-769-3417, juddsfarm@wvi.com (also, wanted used containers)

**FRESH SAWDUST:**

Consistently fair pricing. Forest-Grove, OR. For pricing call 503-849-0216

**911 Hay Equip.**

**New And Used Parts:** for all models New Holland bale wagons. **Largest Inventory in North America.** Sod Busters Sales, Polson, MT. 877-735-2108 or 406-883-2118

**Large Supply of Rebuilt New Holland Bale Wagons:** Also buying New Holland bale wagons. Sod Busters Sales, Polson, MT. 406-883-2118



**Bale King Vortex 4000:** great condition, barely used, stored undercover, breaks up large square bales and round bales, \$12,000. Deming, WA. 360-319-5380

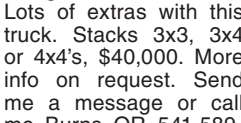
#1 Balewagons: Buy, Sell, New Holland 2&3 wide self-propelled, pull-type models, parts, tires, manuals. Caldwell, ID. 208-880-2889 www.balewagon.com



**Oxbo Merger 334:** great shape, spare parts, stored inside, \$85,000. Moses Lake, WA. 509-760-2549



International chassis with a Cummins M11 and Allison transmission. Stackers has quarter turn on it so stack either strings down or on end. Lots of extras with this truck. Stacks 3x3, 3x4 or 4x4's, \$40,000. More info on request. Send me a message or call me. Burns, OR. 541-589-5805



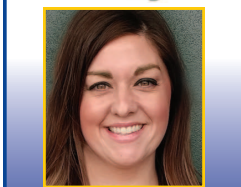
2017 Kuhn 8702T G2 Tedder: Very little use, \$14,500 OBO Fortuna CA 707-845-8960



**KRONE BIG X 800 Forage Harvester:** 2009, 3200 engine hours, EZ Collect 7500 corn head, E-FL 12' corn head, \$75,000. FOB Meridian ID. 800-769-1025

**Real Knowledge. Real People. Real Results!**

**Capital Press**



**Nicole Frazier**  
Ad Representative in Northeast Oregon and Eastern Washington  
**ADVERTISE TODAY!**  
(509) 999-3130  
FAX (503) 370-4383  
Idaho Falls, ID  
nfrazier@capitalpress.com

**911 Hay Equip.**

**Road Runner Hay Squeeze. Central, AZ. 405-762-2815**  
www.customhaysqueeze.com



2004 Roadrunner: great shape, call for details. Silverton, OR. 503-932-8006



**Freeman 370 Baler:** 1100 hours, 15x22 chamber, bale and stroke counter, tandem axles \$27,000. McArthur, CA. 661-810-1540



**Freeman 385 Baler:** 1100 hours, 15x22 chamber, bale scale, bale and stroke counter, tandem axles \$29,000. McArthur, CA. 661-810-1540



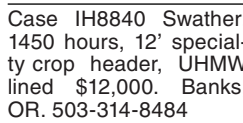
**New Holland Swather 8040:** 4000 hours, 14' header, clean and good condition, \$39,000. Canby, CA. Call George 530-669-3417, juddsfarm@wvi.com (also, wanted used containers)



**Allen Rake 8827:** good condition, \$4000. Canby, CA. Call George 530-640-1471

**BB900 New Holland Baler, 3-tie, 970 hours,** excellent condition, \$19,500 OBO. Super 1048 Harrow Bed, \$12,000. Lakeview, OR. 530-227-5700

**New Holland BW28 Bale Wagon:** 2000 hours, good condition, \$97,000. Silver Lake, OR. 541-480-3371



**Case IH8840 Swather:** 1450 hours, 12' specialty crop header, UHMW lined \$12,000. Banks, OR. 503-314-8484

**(3) Used New Holland BB900 balers,** good condition, \$14,500 each. **Used New Holland BB 900 baler,** 592 hours, excellent condition, \$27,000. **Used New Holland BW28, bale wagon,** excellent condition, 1 owner, \$90,000. Woodburn, OR. 503-969-8705



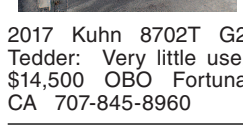
**John Deere R450:** 1828 hours, 500R header, \$77,000. **John Deere R450,** 2185 hours, 994 header, \$69,000. **John Deere 994 header,** \$22,000. **Kuhn GF10802T G2 tedder,** new, \$27,000. McArthur, CA. 530-521-2200



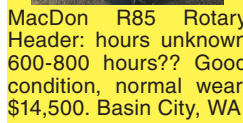
**Hyster 80:** with Sunny D clamp, runs great, \$12,000. Fortuna, CA. 707-845-8960



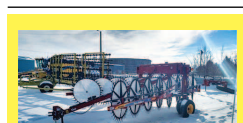
20125 Monchiero nut harvester, 295 hours, like new, \$140,000. Silverton, OR. 503-932-0766



**Ramacher 3500 Sweeper:** 2WD (rear steering wheel and one front wheel hydrostatic drive), Deutz diesel, 7.5' 5 bar rebuilt head (new tires, rubbers and bearings), new hydraulic pump, \$10,000. Molalla, OR. 503-201-2777



**MacDon R85 Rotary Header:** hours unknown 600-800 hours?? Good condition, normal wear, \$14,500. Basin City, WA. 509-539-4428



**2015 New Holland H5980 Hay Rake-Wheel:** 30'3" width, 17 wheels, rubber-mounted tires, \$28,500. INTERMOUNTAIN NEW HOLLAND, Heyburn, ID. 800-293-9359

**911 Hay Equip.**

**Case IH 8575 Baler:** 3x3, well maintained, stored inside, one owner, bale skis, knotter fan, 47K bales, \$25,000. Fairfield, WA. 509-370-3976

**Sunny D Hay Squeeze,** good shape, side shift ready. Silverton, OR. (503)932-8006



**Freeman 5000 big bale wagon:** Sat 12 years before being restored. Allis Chalmers diesel engine. Repacked cylinders, rebuilt Garrett air turbo. New oil filters, oil, wire looms, electric sensors, hydraulic valve and hoses. Tires are fair, \$35,000. Sublimity, OR. 503-769-6681

**RCO Baits**  
Gophers • Squirrels  
Voies-Moles  
Dealer Locator  
1-800-214-2248  
Harrisburg, OR 4-2100

**917 Orchard/Vineyard Equip.**

**Rears 400 gallon PulBlast. 3pt 12' chisel plow, 10' tooth harrow, 10' Rotary mower, 90 HP Landini tractor, loader, 1996 Ford F350 crew, diesel flatbed.** Albany, OR. 541-928-8868

**Tallman Aluminum Picking Ladders:** 10', \$80; 12', \$100. Also two ladder trailers, \$500/ each. Gervais, OR. 503-991-1515

**TN95FA New Holland Orchard Tractor:** 1473 hours, low profile cab, loader and bucket, R-4 tires, 540V1000 PTO, \$27,000. Junction City, OR. 541-554-4891

**2010 Weiss McNair 9800P Hazelnut Harvester with Cart:** Herbst Hi/ Lo rear dump cart. Harvester equipped with rear steering wheels. **Cart with Herbst Desticker,** can dump straight into truck. Excellent condition, \$55,000 for the pair. Silverton, OR. 971-344-4742



**John Deere 6715, 2007, 4WD, cab, clean, 3950 hours, new tires, 110hp, \$45,500. Scio, OR. (503)394-2423 Evenings Best.**

**John Deere 7330:** MFWD, owner retired, only 445 hours, power quad, 16F/16R, 150 HP, 18.4x42 rears, 14.9Rx30 front, cab, air, xm radio, stored in shop. Excellent condition, \$89,500. Christmas Valley, OR. 541-576-2615

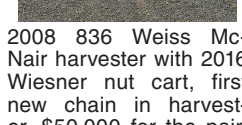
**Case 485 Quadtrac,** excellent condition, PTO, 36" tracks, deluxe cab, 2011, 3000 hours, \$178,000. Silver Lake, OR. 541-480-3371



**Attention: Wanted Kubota or John Deere, 4x4 compact tractor with loader/ equipment.** Carlton, OR. 503-550-0094



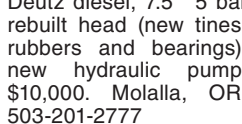
**Flory 7675 Sweeper,** 1700 hours, rebuilt head, new paint. Sharp, \$39,000. Silverton, OR. 503-932-0766



**2008 836 Weiss McNair harvester with 2016 Wiesner nut cart,** first new chain in harvester, \$50,000 for the pair. Silverton, OR. 503-932-0766



**20125 Monchiero nut harvester,** 295 hours, like new, \$140,000. Silverton, OR. 503-932-0766



**Looking for ORCHARD/VINEYARD PROPERTY? Go to Class. 570**

**Capital Press**  
www.capitalpress.com  
917-152-2/HOU

**920 Tractors**

#1 Massey Ferguson Tractors: Oregon City, OR. 503-631-3411

**920 Tractors**

**John Deere 2855N:** 4WD, 620 front end loader with forks. Complete overhaul. 5920 Hours. \$18750 OBO. Hubbard, OR. 503-970-6039

**STEIGER COUGAR II:** 8 wheel, 10 speed, 4WD tractor with a CAT motor. This tractor has 9200 hours, runs great, and pulls like a dream. Tires are about 70%, \$11,000 OBO. Call Mike 509-261-0962. Goldendale, WA. 509-261-0962



**JOHN DEERE 8520 tractors:** 6065 hours, \$94,000, and 10,480 hours, \$72,000. Both have 480-50 rear duals, 380-38 front duals, weights front and rear, quick hitch. Irrigon, OR. 541-314-0095



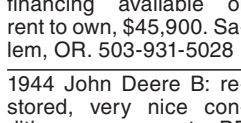
**2005 John Deere 8120:** 2052 hours, 20.8/42, 420/85R30, good, \$97,500. Rickreall, OR. 503-910-5447

**YanMar 336D, diesel,** odometer shows 2170 hours, asking \$5500 OBO. Warrenton, OR. 503-407-9035



**Need to sell...Retiring.** John Deere 6420 4x4 tractor. IVT transmission, 4450 hours. Front fenders, rack/pinion adjustable tires. Tractor is in excellent condition. Have financing available or rent to own, \$45,900. Salem, OR. 503-931-5028

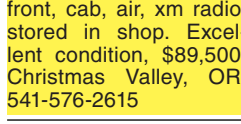
**1944 John Deere B:** restored, very nice condition, runs great, BF Goodrich rubber-like new, spoked front wheel, \$3250. Delivery available. Central, CA. 209-684-4885



**John Deere 4040 tractor:** dual loader with quick attach, new front tires, newer inside dual tires, 5896 hours, 90 horse power, air, heat and radio \$24,500. Gooding, ID. 208-539-5693

**Ford 9030 loader tractor for sale:** 5317 hours, hydraulics and PTO on both ends, 105 horsepower, 4X4, quick attach loader, \$28,000. Gooding, ID. 208-539-5693

**1981 Steiger PTA280 Tractor:** automatic 280HP, 4WD 225HP, \$22,000 INTERMOUNTAIN NEW HOLLAND. Twin Falls, ID. 800-293-9359



**Harrison 6 Row Potato Planters with extensions.** Year 2000 and 2003. Chrome shoes, front and rear tool bars, set up for banded fertilizer and chemical spray. Many extra parts, \$5000 each OBO. Pasco, WA. 509-531-5707

**John Deere 8820:** rebuilt engine, spike tooth, belt pickup. Excellent condition, \$15,500. Rickreall, OR. 503-930-1904

**3- bottom plow, 8' field cultivator, 3-point sub-soiler, 3-point grader, 8' wheel disc, 5' Bush Hog.** Vancouver, WA. 360-253-0785

**Berry/ Black Cap Pruner:** RES front tractor mount, hydraulic operated, barn stored, like new, \$4750. Beavercreek, OR. 503-632-4409

**2008 JD 1790, CCS twin row corn/ bean planter.** 32R-15R. 2015 All new precision parts. 2016 New JD surefire fertilizer system. Excellent condition, \$110,900. Eltopia, WA. 509-539-4233

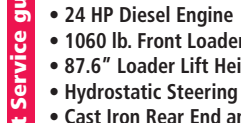
**Massey Ferguson 570 6- bottom, on- land, roll over plow,** \$5,500. Silverton, OR. 971-344-4742

**LOOK!**  
4-6622 Combines all around 2000 hours. Always Stored Inside. Well maintained, \$3000 each. Also have 1 parts combine. Sunnyside, WA. 509-831-5820

**Bulk Totes**  
New, unused Super Sacks. 35"x35"x25", 2,200 lbs capacity. Minimum order is one pallet, 130 bags per pallet, \$449.80, \$3.46 each. Delivery Available. Toledo, WA. 360-864-2800

**2009 Case IH WD2303 2900 hours, 18' rotary,** \$40,000. Rupert, ID. Jeremy 208-260-0365

**WANTED**  
D200 Wheelhorse: To restore. Port Angeles, WA. Ask for Bob. 360-457-7884



**John Deere 6520L, power quad, loader, 4WD,** \$37,000. Silverton, OR. 503-932-0766



**Mint Still Equipment:** 18' Newhouse mint tubs, condensers, separating can, valves, piping, redistills, boilers are free if you remove. Junction City, OR. 541-554-4891

**920 Tractors**

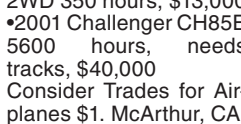
**2016 New Holland T4.90:** 2042 hours, 86HP, PTO 73HP, \$22,000. INTERMOUNTAIN NEW HOLLAND Jerome, ID. 800-293-9359

**Massey Ferguson 135:** Gas, 2600 hours, excellent condition, \$4000. Gaston, OR 503-662-5401



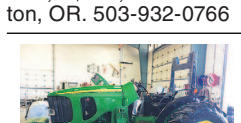
**2155 John Deere:** new tires, new PTO clutch, lots of new parts, \$6500. Gaston OR. 503-662-5401

**L4150 Kubota:** loader, 4WD, rebuilt motor, \$12,500. Gaston, OR. 503-662-5401



**John Deere Combines-excellent condition:** 9600, 3390 hours. 8820 Titan II, 3600 hours. 8820 SOLD. 9610, SOLD. All serviced and field ready. Grass seed combines. Silverton, OR. 503-999-7493

**Rears Duk:** with Tundra tires, 520 gallon tank, 62' booms, a bit of a project. Brooks, OR. 503-991-6753



**8870 John Deere Tractor,** 4400 hours, excellent condition, very clean, \$55,000. Rickreall, OR. 503-930-1904

**Massey Ferguson 4840,** excellent condition, only 3700 hours, \$22,500. Rickreall, OR. 503-930-1904

**John Deere 4710 Spray-**er: 2000 hours, 60' booms, \$45,000. McArthur, CA. 661-810-1540

**SOLD FARM:** International 5 shank ripper with gauge wheels and new points, \$1000. Farm hand F11 Loader with bucket and 8 bale head, \$1000. All equipment is in good shape. Hermiston, OR. Ask for Vernon 541-564-7684

**2388 Case IH Combine:** 3977 engine hours, grain tank extensions, rubber concaves, pick up header, \$55,000. Junction City, OR. 541-554-4891

**Retiring Case IH C-50 Tractor,** 353 hours, \$21,000. **John Deere 1450 plow,** 4- bottom, \$1500. **John Deere 450C dozer,** \$30,000. **Howard HR36-90,** new, rotavator, \$5500. **New Great Plains drill, 72",** \$8500. **Bush Hog Mower, 6',** \$1000. **AerWay 8' aerator,** \$3000. **Ziemann 3 axle trailer,** \$2000. Albany, OR. Leave message 541-619-1160

**John Deere 4040 tractor:** dual loader with quick attach, new front tires, newer inside dual tires, 5896 hours, 90 horse power, air, heat and radio \$24,500. Gooding, ID. 208-539-5693

**Ford 9030 loader tractor for sale:** 5317 hours, hydraulics and PTO on both ends, 105 horsepower, 4X4, quick attach loader, \$28,000. Gooding, ID. 208-539-5693



**1981 Steiger PTA280 Tractor:** automatic 280HP, 4WD 225HP, \$22,000 INTERMOUNTAIN NEW HOLLAND. Twin Falls, ID. 800-293-9359

**John Deere 8820:** rebuilt engine, spike tooth, belt pickup. Excellent condition, \$15,500. Rickreall, OR. 503-930-1904

**3- bottom plow, 8' field cultivator, 3-point sub-soiler, 3-point grader, 8' wheel disc, 5' Bush Hog.** Vancouver, WA. 360-253-0785

**Berry/ Black Cap Pruner:** RES front tractor mount, hydraulic operated, barn stored, like new, \$4750. Beavercreek, OR. 503-632-4409

**2008 JD 1790, CCS twin row corn/ bean planter.** 32R-15R. 2015 All new precision parts. 2016 New JD surefire fertilizer system. Excellent condition, \$110,900. Eltopia, WA. 509-539-4233

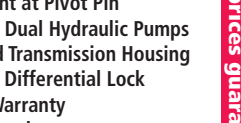
**Massey Ferguson 570 6- bottom, on- land, roll over plow,** \$5,500. Silverton, OR. 971-344-4742

**LOOK!**  
4-6622 Combines all around 2000 hours. Always Stored Inside. Well maintained, \$3000 each. Also have 1 parts combine. Sunnyside, WA. 509-831-5820

**Bulk Totes**  
New, unused Super Sacks. 35"x35"x25", 2,200 lbs capacity. Minimum order is one pallet, 130 bags per pallet, \$449.80, \$3.46 each. Delivery Available. Toledo, WA. 360-864-2800

**2009 Case IH WD2303 2900 hours, 18' rotary,** \$40,000. Rupert, ID. Jeremy 208-260-0365

**WANTED**  
D200 Wheelhorse: To restore. Port Angeles, WA. Ask for Bob. 360-457-7884



**John Deere 6520L, power quad, loader, 4WD,** \$37,000. Silverton, OR. 503-932-0766

