

222 Truck/ Auto Parts & Accessories

D7 CAT PARTS: transmission and torque converter. Noah's Angus Ranch. Cambridge, ID. 208-550-0531, 208-257-3686

Loading Ramps: all aluminum. Pair 2'x6' ATV ramps, \$200. Pair 7'7"x1' riding lawn mower ramps, \$125. **U-haul type loading ramps:** 16'Lx2'W, 1000lb capacity with open crating, \$400. 2'Wx10'L, \$200. 8'Lx30"W, \$200. **Loading dock plate** 4'Lx5'W, \$125. **Lift truck tail gate,** 6'8"Wx5'T, 1250lb capacity, \$800. Vancouver, WA. 360-256-5010

228 Tires & Wheels

Flotation Tires: New-Used
42x25x20, 48x25x20
48x31x20, 44x41x20
54x37x25, 67x34x25
66x43x25, 66x44x25
73x44x32, most metric sizes and rims for all of the above. Chowchilla, CA. 209-246-3309

(3) Pairs 68-50-32: 6 ply on wheels 95%.
(3) pairs 54-31-26: 10 ply turfs on wheels: 67-34-30 10 ply loggers. 66-43-25 Tubes. 48-31-20 Tubes. Chowchilla, CA. 209-246-3309

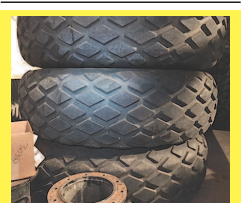
(2) 9.5x48 radial, new centers and wheels, 80% rubber, \$600. (2) 13.6x38, 30% rubber, \$200. Both sets off 4030 John Deere. Salem, OR. 503-362-7551

HOT! SAVINGS at Capital Press
1-800-882-6789
www.capitalpress.com

316 Trailers Misc.

228 Tires & Wheels

54/37x25 Firestone flotation tires with 10 hole bud wheels. Cornelius, OR. 503-969-5977



(6) Goodyear 480/80R-38 Diamond Tread Tires: very good condition, \$1000/ each or \$5500/all. Dayton, WA. 509-520-2728

316 Trailers Misc.



Trailers: 32' Versa trailer, 34' New House trailer, (2) 37' Imco trailers. All with rack extensions, electric tarps and tractors with wet kits. Sunny-side, WA. 509-840-0424

2013 Panderra: 5- axle chassis, 1 lift axle, excellent condition, tires 90%, no recaps, brakes 80%, \$28,000. Ellensburg, WA. 509-964-2218



2006 B&B sprayer trailer, 30,000 LB GVW, 28' long, 12' wide with rails down, \$10,000. Eltopia, WA. 509-539-8298

316 Trailers Misc.



New Trailmax Trailers: TRD-54T, 17.5, tilt deck, 66,600 GVW; T-12-UT, 4+16 tilt, 14,000 GVW; T-16-UT, 4+16 tilt, 18,000 GVW. Brattain International, Albany, OR. 541-928-3324, ext. 1.



1998 Jet 34' lead trailer with air ride suspension, gear reduction gates, shurlock tarp and 2011 22' pup with spring suspension and shurlock tarp. Both with LED lighting, \$38,000. Genesee, ID. 208-285-1767, hermanfarms817@hotmail.com



2011 Retesa 5500 gallon axle vacuum tank trailer, \$20,000. Dayton, OR. 503-969-9545

319 Trailers, Horse & Stock



1977 Brenner 6,000 gallon tandem-axle stainless steel insulated tank trailer, \$26,500. Dayton, OR. 503-969-9545

319 Trailers, Horse & Stock

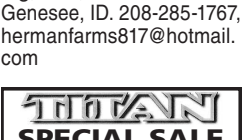


Like New Pipe GR Trailer with Canvas Top, 24'x6.8', \$13,500. Stanfield, OR. 541-571-6936

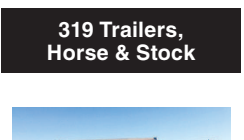
316 Trailers Misc.



SPECIAL SALE ON FLATBED TRAILERS
W.W. Western & Trailer
Prineville, OR • 541-447-6890
www.westernwear@gmail.com



319 Trailers, Horse & Stock



319 Trailers, Horse & Stock

319 Trailers, Horse & Stock



319 Trailers, Horse & Stock

319 Trailers, Horse & Stock



319 Trailers, Horse & Stock

354 Auction Sales

354 Auction Sales

354 Auction Sales

354 Auction Sales

CONSIGNED FARM MACHINERY & EQUIPMENT AUCTION
2-DAY MACHINERY SALE
WOODBURN AUCTION YARD
597 S. Pacific Hwy., Woodburn, OR • 1/2 mile South of Woodburn, OR, on Hwy. 99E
Preview: Thursday & Friday, January 25th & 26th • 8AM-5PM
SATURDAY, JAN. 27TH, 2018 • 9AM SHARP

TRACTORS

- AC-D-14 tractor w/loader
- 1982 Avion camp trailer
- 1978 Ford Econoline 150 van
- 1979 Ford Econoline 250 van
- 1986 Ford F250XL pickup
- 1973 Ford F250 pickup
- 1973 Argosy travel trailer
- 1993 Ford F250 pickup
- 1985 Volvo F61 truck
- 1997 Ford cement mixer truck (blown engine)
- (2) 2-ton engine hoists
- engine stand
- ProAir 60 gallon compressor
- Knaack Jobmaster Model 139 toolbox

EQUIPMENT & MISC. ITEMS

- JD Model M 3pt hitch
- Pexto 4ft metal rolls
- (4) 20' x 8' x 8.6' storage containers
- (1) 40' x 8' x 8.6' storage container
- 4' x 10' utility trailer • van truck box
- (2) 20ft truck flatbeds
- several misc. rollers, roller racks, roller stands & roller conveyors
- chain link fencing
- tires w/rims
- press w/bits
- gear box
- cylinder
- truck rack
- barb & smooth wires
- axle
- Factory CAT sweeper
- Ridgid job box
- truck fuel tanks
- metal roofing
- pull-behind cart
- electric pumps
- fiberglass water tank
- metal racks
- truck dolly
- roll bar for JD 2640
- JD grill guards
- JD 6000, 7000 & 8000 series tractor fenders
- JD 2-cylinder single front end
- several barrels misc. oil
- porta-pots
- rolling stairs
- metal racks
- cantilever arms
- fan w/hood
- wall-mount boom
- Knapheide truck bed
- SA 6'x10' trailer
- Curtis tractor cabs
- pickup fuel tank w/nozzle
- (2) 16.5x16.1 tires
- cement mixer
- manure pump
- hoist parts
- roller tables
- Gehl trailer frame
- Knowles FB trailer
- hydraulic blower
- gasoline blower
- farm trailer
- Rops Grizzly roll bar
- Dixon stripper kit
- (4) Chief hydraulic cylinders
- (2) Maxim hydraulic cylinders
- hydraulic lift bed
- (2) 40' x 80' x 22' storage buildings
- (1) 20' x 30' x 12' storage building
- greenhouse
- (1) pair of wrought iron gates
- 10' tool bar
- lift gates
- Accu-Bin mini bulk transfer system
- forklift battery charger
- 36" mulcher
- (8) tow straps
- (2) 10'x10' pop-up shades
- service box
- white poly tank
- sprayer shields
- air tank
- planter tires
- AC planter parts
- lawn mower tires
- **MACHINE TOOLS**
- pipe threader
- forge w/blower
- hydraulic jack
- Sun computer auto analyzer/scope
- Sureweld Model SU-255 AC/DC arc welder
- Kobalt 60 gallon compressor
- (2) 2005 GMC C5500 trucks w/ dump bed
- 2001 Ford F550 truck w/service box
- 1985 trailer w/wire wheels
- 1990 Duralite 20ft stock trailer
- 2006 Great Northern DA trailer
- 2006 Wells Cargo 25ft enclosed trailer
- 2009 Wells Cargo 23ft enclosed trailer
- JD 110 4x4 backhoe
- **TITLED VEHICLES & TRAILERS**
- 1976 Custom FB trailer
- Kubota M5700 tractor w/loader
- Tennant 240EH sweeper
- Yanmar 187B diesel tractor
- MF 35 tractor (not running)
- Kubota L2800 tractor (not running)
- **FORKLIFTS & BACKHOES**
- Datsun 6000# forklift
- Toyota FG20 forklift
- Mitsubishi FD70 forklift
- JD X340 mower
- Hustler FasTrak zero turn mower
- Honda FRC 800 Walk Behind Tiller
- Jacobsen gang mower
- Troybilt 36" riding mower
- Walker MDDGHS mower
- 36" grass catcher
- **EQUIPMENT ATTACHMENTS**
- 52" quick-attach skid steer bucket
- blade
- forklift forks
- backhoe bucket
- yellow loader bucket
- 72" hydraulic Skid Steer bucket w/ grapple
- (3) 94" hydraulic Skid Steer blades
- TMG 215 backhoe attachment
- (2) 72" fork extensions
- Kubota backhoe attachment
- fenders & cab for sod cutter
- hydraulic tank for sod harvester
- **MOWERS**
- 3ft 3pt mowers
- JD 403 3pt mower
- 3pt rotary mower deck
- VKD 190 6ft 3pt flail mower
- JD 709 3pt mower
- JD 5ft 3pt mower
- JD 6ft mower
- **HAY EQUIPMENT**
- Int. 445 baler
- Int. hay rake
- NH hay cutter
- Newhouse bale chopper
- **SPRAYERS**
- (2) Rears Nifty 50 sprayers w/ Honda motors
- Raven 30 gallon spray mixer pot
- Mitchell sprayer
- Montana Supreme 480 3pt sprayer
- **TANKS**
- fuel tanks
- diesel tank
- **LIVESTOCK EQUIPMENT**
- water trough
- misc. gates & panels
- **IRRIGATION EQUIPMENT**
- 3600ft 2" irrigation pipe
- 120ft 2" irrigation pipe
- misc. irrigation parts
- several pieces of random length 3" & 4" irrigation pipe
- irrigation sprinkler stands

SUNDAY, JAN. 28TH, 2018 • 9AM SHARP

FIELD EQUIPMENT

- 6ft 3pt springtooth cultivator
- Maschio 3pt 2-row tiller
- 3pt 2-shank ripper
- dirt clod roller (part)
- (4) swather tires
- Hinomoto 3pt hydraulic tiller
- Curtis Fast-Cast fertilizer spreader
- sod cutter
- Agrex 500 spin spreader
- sprocket roller
- JD 10ft field cultivator
- TMG 80 3pt tiller
- JD cover-crop cultivator
- caneberry roller
- caneberry subsoiler
- AC planter & planter parts
- **MISCELLANEOUS EQUIPMENT**
- 3pt. post hole auger
- 3pt quick-attach mixer
- 4ft 3pt disc
- 6ft 3pt aerator
- Cyclone fertilizer spreader
- Barber Engineering seed spreader
- Worksaver spreader
- Cook 4ft offset pull disc
- JD 12ft belt-pickup header
- 54" tiller
- 3pt 2-bottom plows
- 3pt 3-bottom plows
- NW 4ft tiller
- Kongskilde Maskinfabrik 8ft 3pt springtooth cultivator
- Towner 7ft offset pull disc
- Sunflower 20ft pull wing disc
- caneberry row separator
- 3pt springtooth cultivator
- 3pt 2-row strawberry tiller
- 4ft 3pt box scraper
- Rankin 6ft 3pt blade
- auger
- tiller parts
- planter wheels
- JD 7ft 3pt blade
- 6ft 3pt box scraper
- Howse 4ft 3pt box scraper
- cultivator parts
- fertilizer bin
- 8ft 3pt blade
- (2) handwash stations on trailers
- International 3-bottom rollover plow
- Maschio 3-row tiller
- Land Pride 6ft 3pt tiller

MANY MORE AUCTION ITEMS BY SALE DAY!

LIST SUBJECT TO CHANGE. Some items may have a reserved bid.
Everything sold on an "as is" basis.
Loading facilities.

NO RECEIVING OR LOADING OUT ON TUESDAYS PLEASE.

Terms Of Sale: Cash Or Check W/ID Day Of Sale.
5% buyer fee on all purchases.
An additional surcharge of 4% on all credit cards.
Lunch On Grounds • Not Responsible For Accidents
No children under the age of 13, please. 13 and over are welcome. Children must stay with parents at all times.

MANAGER: PAUL BASS • AUCTIONEER: SKIP MORIN e-mail: woodburnauction@gmail.com

WOODBURN AUCTION YARD
Established in 1941.
1/2 mile South of Woodburn, OR on Hwy. 99E
AUCTIONEERING SERVICE
LICENSED AND BONDED DA4549
503-981-8185, Ext. 1
FAX 503-982-7640

CHECK OUR WEBSITE FOR MORE PICTURES & DETAILS
www.woodburnauction.com

FRONTIER TRAILER SALES
Klamath Falls, OR

2018 C.M. STEEL FLATBEDS

We have a whole new line of C.M. Flatbeds in stock to fit Ford / GM / Dodge. Single rear wheel, dual rear wheels, long and short beds, 3 trim packages to choose from. Call or stop in with any questions. Or visit: www.frontier-trailersales.com Financing Available • 877-467-0418

FRONTIER TRAILER SALES
Klamath Falls, OR

WHAT'S ON YOUR HITCH?

FEATHERLITE TRAILERS
Safe. Secure. Smart.

2017 Featherlite 8413 stock combo, 7x20, tack room.....**SOLD**

USED TRAILER BLOWOUT!
Additional \$300 OFF these prices!

2014 Featherlite 8127, 7x20 GN.....\$15,500
1999 Featherlite 8546, 7x19, 3H, slantload, GN.....\$13,500
1994 Econolite, 3H, gooseneck.....\$4,900
1978 Felps, 6'x16', 6' tall, gooseneck.....\$2,395
1987 Circle J Rancher, 7'x16', 6'8" tall.....\$3,900
1987 Circle J Bronco, GN, 6'x16', 6'8" tall.....\$3,500

www.frontier-trailersales.com
Financing Available • 877-467-0418

FRONTIER TRAILER SALES
Klamath Falls, OR

WHAT'S ON YOUR HITCH?

NEW 2017 Trails West Santa Fe

24' Black/Aluminum. Stk#HP070537 **\$17,700**

17' Black/Aluminum. Stk#HP070536 **\$17,500**

2005 Trails West Classic 7' x23.5, slant load, GN, side tack, 8'x8' LQ.....\$15,995

www.frontier-trailersales.com
Financing Available • 877-467-0418

www.trailer-world.com • www.trailer-world.com

Best Trailer...Best Price!

2017 TRAVALONG 53' GROUND LOAD STOCK TRAILER

ONLY **\$44,499** +F.E.T

MSRP \$62,171 Reg \$49,000 + F.E.T

*GVWR 68,000 lbs • 102" wide x 10'4" high • 3 Compartments • 37' cleaned rubber on the floor • King Pin, Tandem 22.5K air ride axles • Steel Construction with 6" I-beam main frame.

All Horse & Stock Trailers On Sale
Includes Special Orders.

TRAILER WORLD
A Division of **HYPER TRAILER SALES**
Covering western & eastern Oregon, Washington, and Idaho

Ontario, OR 541-889-4310 Woodburn, OR 503-981-8777 Bend (Tumalo), OR 541-389-9849

COMING SOON TO HERMISTON, OR
www.trailer-world.com • www.trailer-world.com

Always lowest prices guaranteed.

WE COVER A LOT OF GROUND!

Capital Press offers many ways to deliver your message to the West's Ag Audience.

- Flyers
- Mobile
- Websites
- Newspaper
- E-newsletters
- Custom Publications
- Ag Business Directory

Call us today!

Capital Press
The West's Ag Weekly

800-882-6789
or go to www.capitalpress.com

354 Auction Sales

354 Auction Sales

The Northwest's best auctions are in

Capital Press

and online!

Go to Marketplace.CapitalPress.com and search for "Auctions" after 5:00 PM every Friday. May vary depending on holidays.

www.woodburnauction.com