

# CLASSIFIEDS

VIEW ALL CLASSIFIED ADS ABSOLUTELY FREE AT WWW.CAPITALPRESS.COM

Line ads 503-364-4431  
FAX 503-370-4383  
Display Ads  
503-364-4798  
FAX  
503-364-2692

## Capital Press

The West's **Ag** Weekly

1-800-882-6789  
www.capitalpress.com

OMISSION & ERROR: Capital Press will exercise due care to prevent omissions and mistakes, but its total liability for any error, in any advertisement published, shall not exceed the proportionate space in which the error occurred. Credit, when allowable, will apply to the first insertion only.

1400 Broadway St. NE  
Salem, OR 97301  
P.O. Box 2048  
Salem, OR  
97308



210 - Trucks



354 - Auctions



564 - Farms



651 - Help Wanted



828 - Miscellaneous



758 - Cattle



923- Farm Equip.

### THE CAPITAL PRESS SALES TEAM IS HERE TO SERVE YOU!

• Real knowledge • Real People • Real results!



**Greg Hains**  
California & W Nevada  
1-800-882-6789  
ghains@capitalpress.com



**Stacey Righter**  
Portland (Eastside), Columbia River Gorge & W Washington  
(503) 871-7956  
srighter@capitalpress.com



**Stefani Evers**  
NW Oregon, N Willamette Valley  
(503) 871-7957  
severs@capitalpress.com



**Carl Bamford**  
S Willamette Valley, SW & Central Oregon  
(541) 521-9008  
cbamford@capitalpress.com



**Nicole Frazier**  
NE Oregon, E Washington  
(509) 999-3130  
nfrazier@capitalpress.com



**JoAnn Vanderwey**  
SW Idaho, NE Nevada & SE Oregon  
(208) 880-4334  
jvanderwey@capitalpress.com

## CLASSIFIED INDEX

Acreage.....	579	Farm, Yard, Estate Sales.....	351	Pickups.....	211
Alpacas & Llamas.....	743	Farms.....	564	Potato/Sugar Beet Equip.....	914
Antique Farm Eq. & Parts.....	905	Feed, Grain.....	719	Poultry & Fowl.....	722
Antique/Classic Vehicles.....	201	Fencing.....	802	Public Notices.....	107
Antiques & Collectibles.....	813	Fertilizer.....	825	Rabbits.....	725
Arts & Crafts.....	816	Fish.....	721	Ranches.....	561
ATVs/Motorcycles.....	219	Forklifts.....	896	Ranchettes.....	558
Auction Sales.....	354	Fuel, Heating & Firewood.....	807	Real Estate Auctions.....	534
Automobiles.....	204	Garden, Turf, Yard Equip.....	908	Real Estate Wanted.....	531
Bees.....	823	Generators.....	878	Recreational Property.....	540
Bison.....	761	Goats.....	746	Refrigeration Equipment.....	863
Boat Trailers.....	260	Hay Equip.....	911	Rentals, Leases.....	546
Boat/RV Storage.....	269	Hay, Straw, Forage.....	716	Residential Property.....	549
Boating Parts Accessories.....	254	Heavy & Indust. Eq.....	899	Rock, Sand & Gravel.....	803
Boats for Sale.....	251	Help Wanted.....	651	RV Parts & Accessories.....	307
Boats Wanted.....	257	Horses, Mules, Donkeys.....	731	RVs & Travel Trailers.....	301
Building Materials.....	804	Irrigation Equip.....	887	Sawmill Equip.....	894
Business-Sales Opportunities.....	643	Land.....	576	Seed.....	824
Business for Sale.....	644	Legal Notices.....	101	Services.....	664
Campers & Canopies.....	310	Livestock Equip. & Supplies.....	869	Sheep.....	740
Cattle - Beef.....	758	Loans & Financing.....	667	Shop Equip. & Tools.....	881
Cattle - Dairy.....	755	Logging Equip.....	893	Sporting Goods/Hunting.....	819
Christmas Trees.....	821	Mini Ranchettes.....	555	SUVs.....	207
Coast Property.....	543	Misc for Sale.....	828	Swine.....	749
Commercial Property.....	525	Mixed Livestock Sales.....	752	Tanks & Storage.....	875
Condos for Sale.....	510	Mobile & Mfd. Home.....	537	Timber Property.....	573
Dairy Eq. & Supplies.....	872	Nursery Equipment & Supplies.....	907	Timber/Lumber.....	801
Dairy Farms.....	567	Nursery Stock Plants.....	822	Tires & Wheels.....	228
Dogs, Cats, Pets.....	728	Obituaries.....	911	Tractors.....	920
Draft Horses & Equip.....	734	Orchard & Vineyard Property.....	570	Trailers Misc.....	316
Emu, Ostrich, Rhea.....	744	Orchard/Vineyard Equip.....	917	Trailers, Horse & Stock.....	319
Equestrian Property.....	552	Organic.....	826	Truck/Auto Parts & Accessories.....	222
Exotic Animals.....	737	Packing/Processing Eq.....	890	Trucks.....	210
Farm Buildings.....	805	Pasture.....	582	Utility Trailers.....	313
Farm Chemicals.....	827			Vacation Homes for Sale.....	513
Farm Equip Parts.....	902			Vans.....	216
Farm Equipment.....	923			Well-Drilling Equip.....	884
				Work Wanted.....	652

**Capital Press**  
The West's **Ag** Weekly  
1-800-882-6789 • www.capitalpress.com

### 101 Legal Notices

**By order of the U.S. Bankruptcy Court For Sale by Bid Basis**  
(2) Ground-Pounders/Compactors/Tampers \$850 OBO;  
(1) Ground Pounder parts only;  
(1) Kubota T1760 Mower \$500 OBO;  
Various other items including Professional large & small road signs \$2,500 OBO.  
Call Walt at 503-781-5157 or Larry at AMS 503-233-7226

### 204 Automobiles

2002 Saturn **RIGHT HAND DRIVE** station wagon for **RURAL MAIL DELIVERY**, 38,000 ACTUAL MILES. Stored inside last 10 years. 4 cylinder, AT, power steering, air, cruise, power windows, flashing roof lights, remote spotlight, front wheel drive, TRACTION LOCK front, Works better than 4X4. One owner, immaculate condition. Located in Twin Falls Idaho. Can deliver, \$6500. 208-934-6533

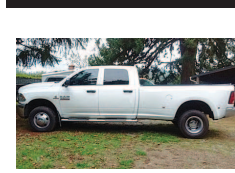
**A picture says a 1,000 words**

Add a full color photo to your print and online ad today by calling **800-882-6789** capitalpress.com **Capital Press** The West's **Ag** Weekly

### 204 Automobiles

2008 Jeep Liberty Limited, 4x4, auto, sun roof, air, leather, v6, white, 98,000 miles. Car Fax shows well maintained, \$10,500. Ridgefield, WA. 360-887-3698

### 210 Trucks



2013 Ram 3500 Super Duty Dually: Cummins 6.7, 4WD, automatic, tilt, cruise, air, 8' bed, 78,500 miles, XM radio, \$33,900. Canyonville, OR. 541-680-5713



1985 International 10 wheeler with hoist, model F9370, 335 Cummins engine, Jake, 812,900 miles, 20' grain/ beet box, self unlocking end gate, very clean, \$22,500. Wendell, ID. 208-539-4160



Trucks: (2) 21' & (1) 19' 10 wheeler trucks. All with unloading boxes, extensions and tarps. Sunnyside, WA. 509-840-0424

### 210 Trucks

## DORNGOODDEAL.COM



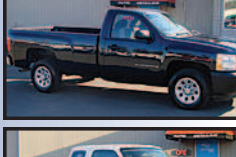
2005 FORD F250 4X4 XCAB, Auto, V10, 124k miles..... **\$12,995**



2014 CHEVROLET TAHOE, Auto, Gas V8, 96k miles..... **\$25,495**



2005 CHEVROLET 2500 LONG BED Auto, V8 Gas, 85k miles..... **\$11,995**



2007 CHEVROLET 1500 LONG BED, Auto, Gas V8, A/C, 81k miles..... **\$10,995**



2008 FORD RANGER 4X4 XCAB, Auto, V6, 53k miles, super nice!..... **\$12,895**



2007 FORD E350 CARGO, Auto, V8 Gas, 133k miles, very good condition!!..... **\$13,495**



2004 CHEVROLET 1500 LONG BED, Auto, Gas V8, 91k miles, looks new!..... **\$10,995**

**DORN BROS. TRUCK SALES, Inc.** SINCE 1947 VOTED QUALITY DEALER OF THE YEAR. 3130 PORTLAND RD. • SALEM, OR (503) 585-4731 Prices good for 1 week from publication date.

Stretch your dollars with ads in Capital Press...

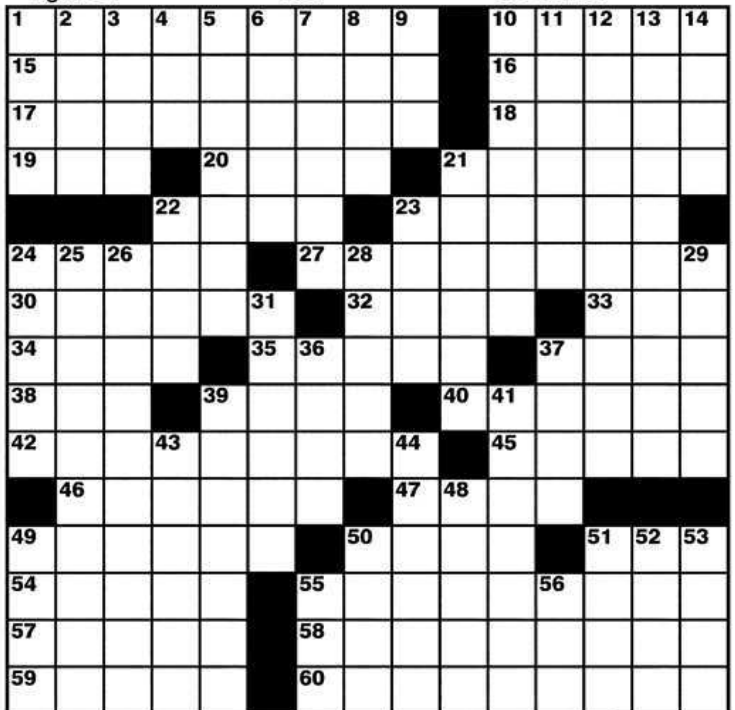


the West's **BEST Ag Weekly!**  
800-882-6789  
www.capitalpress.com

**CAPITAL PRESS CLASSIFIED ADS**  
1-800-882-6789  
www.capitalpress.com • OR ONLINE 24/7 365

### Newsday Crossword SATURDAY STUMPER by Lars G. Doubleday Edited by Stanley Newman www.stanxwords.com

- |  |                              |   |
|--|------------------------------|---|
| <b>ACROSS</b>  | <b>DOWN</b>                  |   |
| 1 Caddies for five decades                                     | 1 Segue to a conclusion      | 9 Bacon composition, at times                   |
| 10 Species of hickory  | 2 It's painted on some masks | 10 Frequent Disney settings                     |
| 15 Set   | 3 Blasted                    | 11 Austen's "Sense"                             |
| 16 Jeopardy! runner-up prize provider                          | 4 Pope's "___ on Solitude"   | 12 Disapproving                                 |
| 17 Hello, Dolly! director                                      | 5 Cracker brand since 1899   | 13 Citrus-tinged Greek soup                     |
| 18 Cant  | 6 Relished                   | 14 Strip brightener                             |
| 19 End of the Red Cross' address                               | 7 Inexact addition           | 21 Recount                                      |
| 20 Make a call   | 8 Double-check figures?      | 22 Something picked up by a mole                |
| 21 15-time Primetime Emmy nominee                              |                              | 23 Cooler away from shore                       |
| 22 Losing strategy, for short                                  |                              | 24 Crew member                                  |
| 23 Don't go off  |                              | 25 Whole  |
| 24 Swells  |                              | 26 Hanger's device                              |
| 27 Theaters' rear seats  |                              | 28 Backwoods groom on the cover of Life in 1952 |
| 30 Preserved, in a way   |                              | 29 Hydroacoustic tool                           |
| 32 Leaning   |                              |   |
| 33 Texter's qualifier  |                              |   |
| 34 Two of his novels were called "the war itself" by Kissinger |                              |   |
| 35 Sound of fright   |                              |   |
| 37 Character lacking depth                                     |                              |   |
| 38 Stopping point  |                              |   |
| 39 Stopping point?   |                              |   |
| 40 ___ Beach, CA   |                              |   |
| 42 Neural pathway activated by a hammer                        |                              |   |
| 45 Golf accessory  |                              |   |
| 46 Castoff from a fair contest                                 |                              |   |
| 47 From  |                              |   |
| 49 Don't go off  |                              |   |
| 50 Bring about   |                              |   |
| 51 Weather report abbr.  |                              |   |



(See answers in Class 216)

1-800-882-6789 Capital Press Advertise Today

## LOVELL Truck Sales 50th ANNIVERSARY



2002 Freightliner FL-70 24' Reefer, automatic transmission, Thermo King, with electric standby, side door. \$9,500



2007 Freightliner, single axle, very clean truck, low miles..... \$16,500



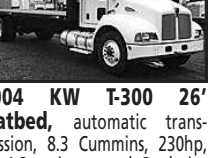
2007 Freightliner, 4 axle day cab, 12.7 non egr Detroit, 10 spd, PS, AC, cruise control, engine brake, 240" WB..... \$22,500



2009 International 4300 cold plate with a reefer elec. standby, automatic transmission. Call for more info



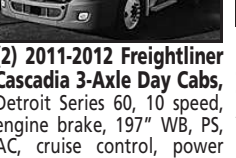
2007 International 4400 Reefer, DT-466, 6 speed transmission..... \$16,500



2004 KW T-300 26' Flatbed, automatic transmission, 8.3 Cummins, 230hp, PS, AC, cruise control. Real nice truck..... \$17,500



2011 International 26' Reefer, tuckaway gate, automatic transmission, electric stand by, DT-466. Very Clean Truck..... \$26,500



(2) 2011-2012 Freightliner Cascadia 3-Axle Day Cabs, Detroit Series 60, 10 speed, engine brake, 197" WB, PS, AC, cruise control, power windows and locks, air slide 5th wheel, miles from 280K-543K. Starting at \$31,500



(3) 2013 Peterbilt 386 3-Axle Day Cabs, 485 hp, engine brake, 10 speed, PS, AC, cruise control, air slide 5th wheel, dump valve, power windows, power locks & mirrors, air ride cab..... Starting at \$39,500



2011 Freightliner, single axle, Allison automatic transmission, Series 60 Detroit DD-13, air ride, PS, AC, cruise control, engine brake. Low miles, super clean truck..... \$32,500



2013 Kenworth T-800 Three Axle Day Cab, 485 hp, 10 speed, 11R22.5, engine brake, aluminum wheels, PS, AC, cruise control, air slide 5th wheel, air ride, cab, power windows and locks, air fairings easily removable..... \$39,500



1998 International 4700 24' Box, with rail gates, DT-444 diesel, automatic transmission, PS, dock height..... starting at \$6,500

ALSO: 2011 Freightliner single axle, Detroit DD-13 Fuller 10 speed, air ride, engine brake, super clean, low miles..... \$21,500

1-800-451-0012 (503) 266-5886 FAX (503) 266-6903 LOVELLTRUCKSALES.COM 680 SW 1<sup>st</sup> Ave (Hwy 99 East) • Canby, OR 97013