

THE CAPITAL PRESS SALES TEAM IS HERE TO SERVE YOU!

- Real knowledge
- Real people
- Real results!



Greg Hains
National Accounts, California, W Nevada
1-800-882-6789
ghains@capitalpress.com



Carl Bamford
S Willamette Valley SW & Central Oregon (541) 521-9008
cbamford@capitalpress.com



Stefani Evers
NW Oregon, N Willamette Valley (503) 871-7957
severs@capitalpress.com



Stacey Righter
Portland (Eastsides), Columbia River Gorge & W Washington (503) 871-7956
srighter@capitalpress.com



Nicole Frazier
NE Oregon, E Washington 509-999-3130
nfrazier@capitalpress.com



JoAnn Vanderwey
SW Idaho, NE Nevada & SE Oregon (208) 880-4334
jvanderwey@capitalpress.com

DEADLINE FOR CLASSIFIED DISPLAY ADS:
Weds. @ 10AM
503-364-4798
FAX 503-364-2692

DEADLINE FOR CLASSIFIED LINE ADS:
Weds. @ Noon
503-364-4431
FAX 503-370-4383

Capital Press
The West's Ag Weekly
1-800-882-6789
www.capitalpress.com

899 Heavy & Indust. Eq.



1985 Hampton Engineering Inc. TL 3013 All Terrain Hydraulic 15-Ton Tower Lifter, Perkins diesel, powershift, with rotating and sliding tower deck, four telescopic tower attaching points, all-wheel steering, 4 hydraulic outriggers, enclosed operators console, (runs, drives & operates) (Reads 286 hours). Sandy, OR. Call For Pricing. Pepe, 503-544-3232 or Pat 503-407-9062



John Deere 770 Motor Grader. Articulating, Front Scarifier. Asking \$22,950. Sandy, OR. Call Pepe 503-544-3232 or Pat 503-407-9062

Make a BIG SPLASH with a small investment in Capital Press advertising.
1-800-882-6789
FAX (503) 370-4383
www.capitalpress.com

899 Heavy & Indust. Eq.

New 8' Brush Rakes: with mounting brackets, \$1250 each. Clackamas Tractor, Clackamas, OR. 503-655-1125



1991 Kobelco LK650: 3.5 yard bucket, smooth edge, good tires, tight machine, 153 hp, 31,500 lb. machine, \$25,000. Gaston, OR. 503-789-3726

CAT 623-B: Self-loading scraper, good condition, \$39,500. **D-6 H U-dozer** with tilt and ripper, near new engine and hydraulic pump, \$86,500. Salem, OR. 503-362-3055

International Pay Loader H-50: 1-1/2 yard bucket, rebuilt motor, injectors, fuel pump, new head, pistons, bearings, radiator. Runs excellent, \$12,000. Silver Lake, OR. 541-419-0327

CASE INDUSTRIAL PARTS
We sell genuine, after market, and used CASE parts at discount prices nationwide. Call For Free Catalog.
CENTRAL EQUIPMENT
AFTER MARKET & USED PARTS
Medford, OR
(888) 593-8749

DON PEILA TRACTOR REPAIR PARTS
specializing in JOHN DEERE INDUSTRIAL EQUIPMENT
Good Used, Reconditioned & After-Market Parts
Peilatractorrepair-parts.com
1-877-423-9746
(541) 772-1801
Central Point, OR

SATELLITE PARTS LOCATING SYSTEM
902 Farm Equip. Parts
Starters, alternators, and generators. Call 503-364-3650 or visit Walz's Rebuild - 348 Market St. NE., Salem, OR.

902 Farm Equip. Parts



BRUSH RAKES
Hansen Metal Works, Salem, OR. 503-932-3590

907 Nursery Equip. & Supplies

USED NURSERY CONTAINERS:
Used, but reusable nursery containers. All sizes. Inventory changes daily. Call for current availability and prices. Sawyer Farms, Scio OR. 503-769-3417, juddsfarm@wvi.com (also, wanted used containers)

Don't Miss Out!
Nursery Equipment and Supply Sale: Retiring. 9am to 4pm Friday, Jan. 5 through Sunday Jan. 7. OPTIMAL TREE SPADE, TRUCKS, EXCAVATOR, Kubota M5400, Rototiller, disc, plow, 3 Rears Sprayers. Lots of miscellaneous. 30260 SE HWY 212, Boring, OR.
1-800-882-6789
www.capitalpress.com

902 Farm Equip. Parts

Nyssa Tractor & Implement
Our yard has 5 miles of road, the rest is Farm Machinery & Parts.
www.nyssactor.com
Toll Free (888) 372-4020
Nyssa, OR

BIG TRACTOR PARTS, INC.

~ GEARED FOR THE FUTURE ~
STEIGER TRACTOR SPECIALIST

- 1. We are your source for new & used Steiger drivetrain parts Series 1 - 9300 Series.
- 2. We rebuild Spicer manual transmissions, Fuji power shift transmissions, dropboxes & axle with ONE YEAR WARRANTY!
- 3. We now rebuild computer control boxes for Steiger tractors 1982-1999.

800-982-1769
www.bigtractorparts.com

907 Nursery Equip. & Supplies

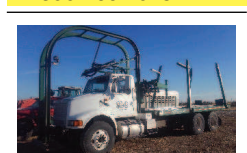
907 Nursery Equip. & Supplies

FRESH SAWDUST: Consistently fair pricing. Forest-Grove, OR. For pricing call 503-849-0216

911 Hay Equip.



KRONE BIG X 800 Forage Harvester: 2009, 3200 engine hours, EZ Collect 7500 corn head, E-FL 12' hay head, \$75,000. FOB Meridian ID. 800-769-1025



International chassis with a Cummins M11 and Allison transmission. Stacker has quarter turn on it so stack either strings down or on end. Lots of extras with this truck. Stacks 3x3, 3x4 or 4x4's, \$40,000. More info on request. Send me a message or call me. Burns, OR. 541-589-5805

2011 New Holland H8080 swather: 2080 hours, 750 header, good shape, \$62,000. **14' heavy duty miller offset disk,** \$6500 OBO. Redmond, OR. 541-891-4087

2016 9870 Discbine with 350 engine hours. Great machine, new turtles, knives, and helper auger. Has auto steer, complete package, \$115,000. Silver Lake, OR. 541-576-4842

902 Farm Equip. Parts

911 Hay Equip.

New Holland 570 Baler: excellent condition, field ready, \$7000. Seaside, OR. 503-440-4925



2013 New Holland Big Baler 340S: tandem axle, chamber extension, 3614 bales, \$59,000. BRIM TRACTOR, Salem, OR. 800-530-2746

Hay Squeeze- Sunny D: 2012 Oregon Roadrunner, excellent condition. Owner operated machine. Dual A/C, solid forks, scale, tilt wheels, 82,000 miles. Well maintained, kept inside, all records, \$168,500. Tulelake, CA. 541-891-6046

2016 9870 Discbine with 350 engine hours. Great machine, new turtles, knives, and helper auger. Has auto steer, complete package, \$115,000. Silver Lake, OR. 541-576-4842

Case IH WDX1101 Swather: 2400 hours, excellent shape, \$20,000. **Towmotor hay squeeze,** \$12,000. 12' Dyna'drive, \$3000. Bonanza, OR. 541-892-8107

Case IH8840 Swather: 1450 hours, 12' specialty crop header, UHMW lined \$12,000. Banks, OR. 503-314-8484



John Deere R450: 1828 hours, 500R header, \$77,000. **John Deere R450,** 2185 hours, 994 header, \$69,000. **John Deere 994 header,** \$22,000. **Kuhn GF10802T G2 tedder,** new, \$27,000. **McArthur, CA.** 530-521-2200

Mower Conditioner: John Deere 915 flail conditioner, field ready, \$4000. Seaside, OR. 503-440-4925

1-800-882-6789
www.capitalpress.com

911 Hay Equip.

Kuhn Rake 3200GE: windrow fluffer, almost new, tandem axle, excellent condition, \$4000. Seaside, OR. 503-440-4925

Hay Conveyor: 16', excellent condition, new motor, 4' extension, stored inside, \$1200. Seaside, OR. 503-440-4925



2012 Twinstar G2-7 rake: 7 bar hydraulic rotary basket, 2-5/16" ball hitch. Field ready. Tangent, OR. Call David for price and additional information 541-979-5492

#1 Balewagons: Buy, Sell, New Holland 2&3 wide self-propelled, pull-type models, parts, tires, manuals. Caldwell, ID. 208-880-2889
www.balewagon.com

H&S Hay Machine flipper fluffer. Good condition, \$2000. Touchet, WA. 509-730-1119



Circle C American Eagle bale stacker: 1994 International truck tandem axle with a 2003 American Eagle stacker, about 60,000 bale count, field ready, stacks all sizes of large bales. Asking \$55,000 OBO. Woodland, WA. Call or text Jay 360-713-4002



New 2016 McHale F5500 Round Baler, 4x4, 15 knives, \$39,000. **BRIM TRACTOR,** Lynden, WA. 800-530-2746



New Holland BB 960 2008, 3x4 big baler, roller chute, poly pickup bands, fully gone through beginning of 2017, \$35,000. Amity, OR. 503-435-7504

www.jonspipeandsupply.com has Monster Hay Feeders: designed for big bales, saves 30 percent of hay, pays for itself first year, 10 year warranty. Call Jon 530-949-2285



2012 Fella Rake, 29.5' swath, excellent shape, \$12,000. **BRIM TRACTOR,** Lynden, WA. 800-530-2746

Hesston BP20 Hay Processor, \$6250; **Deutz-Fahr KU250DN Tedder Rake,** \$2500; **Kuhn GMD500 Mower,** \$3500; **Deutz-Fahr MP122 Round Baler,** \$7000. All in good working condition. Winlock, WA. 360-785-0862

New Holland BW28 Bale Wagon: 2000 hours, good condition, \$94,000. Silver Lake, OR. 541-480-3371

New and Used Parts: for all models New Holland bale wagons. **Largest Inventory in North America.** Sod Busters Sales, Polson, MT. 877-735-2108 or 406-883-2118



Bale King Vortex 4000: great condition, barely used, stored undercover, breaks up large square bales and round bales, \$12,000. Deming, WA. 360-319-5380

IF YOU HAVE A BEEF - sell it in next week's Capital Press!

920 Tractors

911 Hay Equip.

Pequea 1820HD 28' wheel rake, 9 wheels per side, \$7000. Albany, OR. 503-510-7779

Large Supply of Rebuilt New Holland Bale Wagons: Also buying New Holland bale wagons. Sod Busters Sales, Polson, MT. 406-883-2118

917 Orchard/Vineyard Equip.

PRICE Reduced



Gillison Pruning Tower: 25', 1583 hours, hydraulic adjusting axles, heated bucket, excellent condition, \$25,500. St. Paul, OR. 503-932-2371



2008 836 Weiss Mc-Nair harvester with 2016 Wiesner nut cart, first new chain in harvester, \$50,000 for the pair. Silverton, OR. 503-932-0766



Flory 7675 Sweeper, 1700 hours, rebuilt head, new paint. Sharp, \$39,000. Silverton, OR. 503-932-0766

Ramacher 3500 Sweeper: 2WD (rear steering wheel and one front wheel hydrostatic drive), Deutz diesel, 7.5' 5 bar rebuilt head (new tines, rubbers and bearings), new hydraulic pump, \$10,000. Molalla, OR. 503-201-2777

2013 Vrisimo low profile flail mower: 10' cut width, 2' right offset, 540 PTO, 50 HP minimum required. Silverton, OR. 503-873-4464, 503-991-7138.



20125 Monchiero nut harvester, 295 hours, like new, \$140,000. Silverton, OR. 503-932-0766

Rears 400 gallon PulBlast. 3pt 12' chisel plow, 10' tooth harrow. 10' Rotary mower. 90 HP Landini tractor, loader. 1996 Ford F350 crew, diesel flatbed. Albany, OR. 541-928-8868

Tallman Aluminum Picking Ladders: 10', \$80; 12', \$100. Also two ladder trailers, \$500/ each. Gervais, OR. 503-991-1515

TN95FA New Holland Orchard Tractor: 1473 hours, low profile cab, loader and bucket, R-4 tires, 540/1000 PTO, \$27,000. Junction City, OR. 541-554-4891

RCO Baits
Gophers • Squirrels
Voles-Moles
Dealer Locator
1-800-214-2248
Harrisburg, OR

Looking for ORCHARD/VINEYARD PROPERTY?
Go to Class 570

Capital Press
The West's Ag Weekly
www.capitalpress.com
917-1-52-2HOU

920 Tractors



Case IH 435 HD: new Michelin tires, 3pt, 3600 hours, Auto steer valve, nice, \$150,000. Silverton, OR. 503-932-0766

ASSOCIATED TRACTOR SERVICE INC.

NEW • USED • REBUILT PARTS PARTS • SERVICE • EQUIPMENT
Satisfaction Guaranteed Since 1954
PARTS ★ SERVICE ★ EQUIPMENT

- Used Parts National Locator Services
- BEGE Hydraulic Pumps & Parts

CALL NOW & CHECK OUT OUR INVENTORY

(800) 735-1301 • (209) 466-3003
1323 W. Charter Way, Stockton, CA 95206-1110

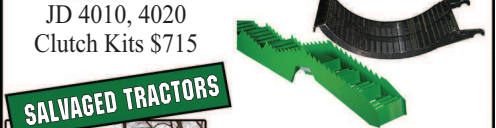
NEW, USED, AND REMAN PARTS

TOLL FREE: 1-877-928-1646
FARMLAND • 32427 OLD HWY 34, TANGENT, OR 97389

Reman Engines for Case/IH, John Deere, and Ford



Seats w/Air Suspension \$1,025
Combine Parts
JD 4010, 4020 Clutch Kits \$715



SALVAGED TRACTORS
A/C Components



Farmland Tractor Supply
Parts@Farmlandtractor.com

907 Nursery Equip. & Supplies

907 Nursery Equip. & Supplies

GK MACHINE INC FUEL TANKS WITH SECONDARY CONTAINMENT NOW UL142 LISTED!

GK Machine is your source for affordable, turn-key above ground steel fuel storage tanks from 250 gallons to 18,000 gallons.

GK Machine manufactures UL 142 listed for Aboveground Flammable and Combustible Liquids.

GK Machine builds best quality fuel storage tanks and split tanks for diesel, gasoline, bio-diesel, ethanol or oil.

Includes fluid level gauges and fill port containment

250 to 18,000 gallons

Primer coat and urethane top coat for maximum corrosion resistance. Sand-blasted for additional weather protection.

GK MACHINE 10590 DONALD RD DONALD OR 503-678-5525



\$3,726⁰⁰ frame
30x96 Semi Gable 5' On Center
Bows 2-3/8" 13 Ga. • 4' side walls, 13'6" high at center
48 x 100 6 mil 4 yr. Poly.....\$460.00
24 pcs Wire Lock.....\$300.96
2 - 96' Roll-ups.....\$549.00
16 pcs Wire Lock for top board.....\$200.64

ALSO OFFERING

- Poly
- Exhaust Fans
- Ground Cover
- Poly Carbonate
- Wire Lock
- Roll-ups
- Shade Cloth
- Heating
- Bench Tops



\$2,261⁰⁰ frame
20x96 Quonset 5' On Center
Bows 1-5/8" 14 Ga. • 4' side walls, 8'6" high at center
32 x 100 6 mil 4 yr. Poly.....\$306.00
22 pcs Wire Lock.....\$275.88
2 - 96' Roll-ups.....\$549.00
16 pcs Wire Lock for top board.....\$200.64

Specializing in Heavy Duty Greenhouse Frames Code and Non-Code

503-678-2700 • 800-347-2701 (Outside OR)
www.ovg.com • ivans@ovg.com • FAX: 503-678-2700
20357 Hwy. 99E • Aurora, OR 97002
Prices good thru 1/20/18.

Zetor TRACTORS

Zetor Models:
6421/6441
7421/7441
8421/8441

67 to 90 HP

THE TRACTOR STORE
(541) 342-5464
5450 W. 11th, Eugene, OR