

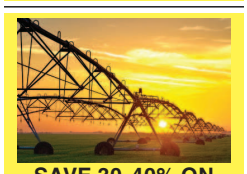
887 Irrigation Equip.

(60) Used Pivots: Engines, pumps. Garden Valley, ID. Call Mike at 208-420-1480, or see www.pivotsplus.com

LOOK!

Older Zimmatic pivot: 12'-123' spans, 30' overhang, standard panel, 14.9 tires. Dismantled and ready for you to haul, \$12,000. Paulina, OR. 541-477-3185

(2) 600' Greenfield Mini Pivots: auto reverse, excellent condition, Northern CA. 408-968-2333



SAVE 30-40% ON NEW PIVOTS

Hydromatic Center Pivots
 • Heavy duty, hot dipped galvanized steel or aluminum.
 • Fixed or movable pivot point.
 • Basic control panel or high tech.
 info@hydromaticcenterpivots.com 775-294-8017

Pivots: Good, various lengths, all brands & late models. No rust. Plus some pivot parts, and buried wire. Call Keizer, OR. 503-881-3232, 503-390-3210

Traveler Big Gun Irrigation Reel: Kifco B series, 350' hose. Works great, well cared for, \$5,000 OBO. Trout Lake, WA. 509-637-0239

Portable pump Cornell 5RB with 125 hp John Deere engine. Good condition, \$8500. Imbler, OR. 541-534-9655

5"x1600" Western Wheel line: 5' (58") wheels, dual frame mover, levelers, end or center feed. Shorter length if needed. Delivery and set up available. Oregon/Northern CA. Tom 541-660-3817



(12) 316 SS Gould Pumps: with 250 HP motor, excellent condition, \$14,950 each. Hermiston, OR. 541-571-0514 email: 53hchull@gmail.com



THANK YOU!

My ad was very effective! I received responses and sold mini donkeys in ID, OR and CA, proving your coverage for the agricultural world in the West is pretty good!

Del Turner
 Cedar Ridge Farm
 Myrtle Creek, OR



DEADLINES:

Classified Display Ads, Weds. @ 10AM
 Classified Line Ads Weds. @ Noon
 1-800-882-6789
 Fax 503-370-4383
www.capitalpress.com

899 Heavy & Indust. Eq.

503-544-3232 • 503-407-9062
 "We Buy Equipment"

- 1998 Vermeer 935BC Chipper 9' Disc, Diesel, Trailer Mtd. Asking \$11,950.00
- 1999 Trail EZE DG5026H4 RGN Lowboy Trailer New Brakes, New 255 70R 22.5 Tires, Asking \$42,500.00
- 1998 International 4900 Dump Truck DT530E Diesel, 8-spd w/ Lo & Lo-Lo Odometer 99,790 ... Asking \$22,500.00
- 1996 Case 660 Articulating Rubber Tire Trencher Case Diesel, 6 Way Back Fill Blade, ... Asking \$14,950.00
- 1996 Case 660 Articulating Rubber Tire Trencher Backhoe Attachment, 6 Way, Asking \$16,950.00
- 1999 Utility Trailer ThermoKing 28' w/ Side Door and Tommy Lift Asking \$6,500.00
- John Deere 770-A Grader Articulating, Front Scarifier, Asking \$22,950.00

bizzardsequipment.net

887 Irrigation Equip.

WANTED: mainline and 2" or 3" hand line, 20' sticks preferred. 360-775-8386

KIFCO B-160 mini irrigation traveler, \$3500. Molalla, OR. 503-201-2777

"Thanks! Very effective ad!" William Krieg • Portland, Ore. Call 1-800-882-6789 to advertise.

IRRIGATION EQUIPMENT BOUGHT. SOLD. RENTAL.

Design of Effluent Handling Systems - Gates, Valves & Aerators New & Used Parts.
 • Aluminum Pipe
 • Certa-lok
 • Siphon Tubes • HDPE
 • Sand Media Filters
 • Wheel Lines • Pumps



Office: (209) 460-0450
 Fax: (209) 982-1832
www.pacsouthwestirrig.com
 Carlos (209) 481-7677
 Jim (209) 986-0099
 887-49-4-1/102

890 Packing/Processing Eq.

FRUIT PACKING LINE



• Water Dump
 • Washer • Waxer
 • Gas Dryer
 • 13 Weight Drop Sorting Bins
\$5,000 (removal via purchaser).
541-689-6760
541-521-6763
 Eugene, OR 52-3/100

893 Logging Equip.
 Goodyear Horizon Fire-hose: 1", 200psi, never used, 250', \$500 firm. Salem, OR. 503-559-8405

Older Machinery: House log machinery, chippers, vans, debarker, new rock blade, John Day, OR. 541-575-1525

896 Forklifts
 2004 Pettibone 10,000 lb telehandler forklift: 4x4, 56' reach. Excellent condition, \$49,500. Dayton, OR. 503-969-9545

CAT V80E: short 2-stage mast with free lift and side shift, LP power, solid pneumatic single tires, \$7500. Gaston, OR. 503-789-3726

Yale 30,000 Capacity Forklift: Perkins Diesel, automatic, 8' forks, hydraulic fork positioners, side shift, 216" upright mast, solid tires on steer, air on drives, air brakes, block heater, battery charger, windshield wipers, heated cab, scales, ex-government BPA, good rubber, no leaks, \$28,000. Gaston, OR. 503-789-3726

Nissan 50, new drive tires, 2 sets of forks, \$6500. Gaston, OR. 503-662-5401

899 Heavy & Indust. Eq.

CAT 2002 D6M: 6-way blade, new skin on blade, new cutting edge, new sprockets, new a/c unit, 8400 hours, \$63,500 Bellingham, WA. 360-907-3917



899 Heavy & Indust. Eq.

899 Heavy & Indust. Eq.

899 Heavy & Indust. Eq.

899 Heavy & Indust. Eq.

899 Heavy & Indust. Eq.

899 Heavy & Indust. Eq.

899 Heavy & Indust. Eq.

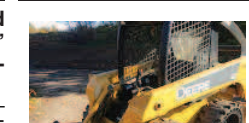
899 Heavy & Indust. Eq.

899 Heavy & Indust. Eq.

899 Heavy & Indust. Eq.

899 Heavy & Indust. Eq.

899 Heavy & Indust. Eq.



John Deere 320 Skid Steer: 1845 hours, hand controls, on/off road airless tires, very good condition, \$22,900. Bellingham, WA. 360-907-3917



John Deere 210C 4x4 Skip Loader: hydraulic blade, 7' box scraper, 1 yard bucket, 7900 hours. Runs Great, \$18,500. Wilsonville, OR. 503-969-9545 Bob



1985 Hampton Engineering Inc. TL 3013 All Terrain Hydraulic 15-Ton Tower Lifter, Perkins diesel, powershift, with rotating and sliding tower deck, four telescopic tower attaching points, all-wheel steering, 4 hydraulic outriggers, enclosed operators console, (runs, drives & operates) (Reads 286 hours). Sandy, OR. Call For Pricing. Pepe, 503-544-3232 or Pat 503-407-9062



John Deere 770 Motor Grader: Articulating, Front Scarifier. Asking \$22,950. Sandy, OR. Call Pepe 503-544-3232 or Pat 503-407-9062

NOW RENTING! CAT-D8T SU
 w/3-shank mounted ripper
ATIMACHINERY.com
888-461-0625
 Five Points, CA 52-2/100

CASE INDUSTRIAL PARTS
 We sell genuine, after market, and used CASE parts at discount prices nationwide. Call For Free Catalog.
CENTRAL EQUIPMENT
 AFTER MARKET & USED PARTS
 Medford, OR
(888) 593-8749 888-46-3/100

902 Farm Equip. Parts
 2009 AGRIC AL40C 3 Point Rototiller: slip clutch, 40" width. Great condition, \$900. Pleasant Hill, OR. 541-747-8832

902 Farm Equip. Parts
 2009 Woods RDC54 Finish Mower: 3 point, for 15-25 hp tractor. Great condition, \$650. Pleasant Hill, OR. 541-747-8832

902 Farm Equip. Parts
 2012 Fella Rake, 29.5' swath, excellent shape, \$12,000. BRIM TRACTOR, Lynden, WA. 800-530-2746

902 Farm Equip. Parts
 2012 Fella Rake, 29.5' swath, excellent shape, \$12,000. BRIM TRACTOR, Lynden, WA. 800-530-2746

902 Farm Equip. Parts
 2012 Fella Rake, 29.5' swath, excellent shape, \$12,000. BRIM TRACTOR, Lynden, WA. 800-530-2746

902 Farm Equip. Parts
 2012 Fella Rake, 29.5' swath, excellent shape, \$12,000. BRIM TRACTOR, Lynden, WA. 800-530-2746

902 Farm Equip. Parts
 2012 Fella Rake, 29.5' swath, excellent shape, \$12,000. BRIM TRACTOR, Lynden, WA. 800-530-2746

902 Farm Equip. Parts
 2012 Fella Rake, 29.5' swath, excellent shape, \$12,000. BRIM TRACTOR, Lynden, WA. 800-530-2746

902 Farm Equip. Parts
 2012 Fella Rake, 29.5' swath, excellent shape, \$12,000. BRIM TRACTOR, Lynden, WA. 800-530-2746

902 Farm Equip. Parts
 2012 Fella Rake, 29.5' swath, excellent shape, \$12,000. BRIM TRACTOR, Lynden, WA. 800-530-2746

902 Farm Equip. Parts
 2012 Fella Rake, 29.5' swath, excellent shape, \$12,000. BRIM TRACTOR, Lynden, WA. 800-530-2746

902 Farm Equip. Parts
 2012 Fella Rake, 29.5' swath, excellent shape, \$12,000. BRIM TRACTOR, Lynden, WA. 800-530-2746

902 Farm Equip. Parts
 2012 Fella Rake, 29.5' swath, excellent shape, \$12,000. BRIM TRACTOR, Lynden, WA. 800-530-2746

902 Farm Equip. Parts
 2012 Fella Rake, 29.5' swath, excellent shape, \$12,000. BRIM TRACTOR, Lynden, WA. 800-530-2746

902 Farm Equip. Parts
 2012 Fella Rake, 29.5' swath, excellent shape, \$12,000. BRIM TRACTOR, Lynden, WA. 800-530-2746

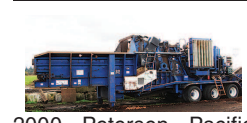
902 Farm Equip. Parts
 2012 Fella Rake, 29.5' swath, excellent shape, \$12,000. BRIM TRACTOR, Lynden, WA. 800-530-2746

902 Farm Equip. Parts
 2012 Fella Rake, 29.5' swath, excellent shape, \$12,000. BRIM TRACTOR, Lynden, WA. 800-530-2746

902 Farm Equip. Parts
 2012 Fella Rake, 29.5' swath, excellent shape, \$12,000. BRIM TRACTOR, Lynden, WA. 800-530-2746

902 Farm Equip. Parts
 2012 Fella Rake, 29.5' swath, excellent shape, \$12,000. BRIM TRACTOR, Lynden, WA. 800-530-2746

899 Heavy & Indust. Eq.



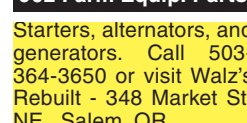
2000 Petersen Pacific horizontal waste wood grinder HC7400: 1000 HP, Caterpillar 3412E, 5595 hours, \$145,000. Runs great! Canby, OR. 503-969-9545



1991 Kobelco LK650: 3.5 yard bucket, smooth edge, good tires, tight machine, 153 hp, 31,500 lb. machine, \$25,000. Gaston, OR. 503-789-3726

CAT 623-B: Self-loading scraper, good condition, \$39,500. **D-6 H U-dozer** with tilt and ripper, near new engine and hydraulic pump, \$86,500. Salem, OR. 503-362-3055

902 Farm Equip. Parts
 Starters, alternators, and generators. Call 503-364-3650 or visit Walz's Rebuilt - 348 Market St. NE., Salem, OR.



BRUSH RAKES
 Hansen Metal Works, Salem, OR. 503-932-3590

907 Nursery Equip. & Supplies
USED NURSERY CONTAINERS: Used, but reusable nursery containers. All sizes. Inventory changes daily. Call for current availability and prices. Sawyer Farms, Scio OR. 503-769-3417, juddsfarm@wvi.com (also, wanted used containers)

FRESH SAWDUST: Consistently fair pricing. Forest-Grove, OR. For pricing call 503-849-0216

908 Garden, Turf, Yard Equip.
 2009 AGRIC AL40C 3 Point Rototiller: slip clutch, 40" width. Great condition, \$900. Pleasant Hill, OR. 541-747-8832

908 Garden, Turf, Yard Equip.
 2009 Woods RDC54 Finish Mower: 3 point, for 15-25 hp tractor. Great condition, \$650. Pleasant Hill, OR. 541-747-8832

908 Garden, Turf, Yard Equip.
 2012 Fella Rake, 29.5' swath, excellent shape, \$12,000. BRIM TRACTOR, Lynden, WA. 800-530-2746

908 Garden, Turf, Yard Equip.
 2012 Fella Rake, 29.5' swath, excellent shape, \$12,000. BRIM TRACTOR, Lynden, WA. 800-530-2746

908 Garden, Turf, Yard Equip.
 2012 Fella Rake, 29.5' swath, excellent shape, \$12,000. BRIM TRACTOR, Lynden, WA. 800-530-2746

908 Garden, Turf, Yard Equip.
 2012 Fella Rake, 29.5' swath, excellent shape, \$12,000. BRIM TRACTOR, Lynden, WA. 800-530-2746

908 Garden, Turf, Yard Equip.
 2012 Fella Rake, 29.5' swath, excellent shape, \$12,000. BRIM TRACTOR, Lynden, WA. 800-530-2746

908 Garden, Turf, Yard Equip.
 2012 Fella Rake, 29.5' swath, excellent shape, \$12,000. BRIM TRACTOR, Lynden, WA. 800-530-2746

908 Garden, Turf, Yard Equip.
 2012 Fella Rake, 29.5' swath, excellent shape, \$12,000. BRIM TRACTOR, Lynden, WA. 800-530-2746

908 Garden, Turf, Yard Equip.
 2012 Fella Rake, 29.5' swath, excellent shape, \$12,000. BRIM TRACTOR, Lynden, WA. 800-530-2746

908 Garden, Turf, Yard Equip.
 2012 Fella Rake, 29.5' swath, excellent shape, \$12,000. BRIM TRACTOR, Lynden, WA. 800-530-2746

908 Garden, Turf, Yard Equip.
 2012 Fella Rake, 29.5' swath, excellent shape, \$12,000. BRIM TRACTOR, Lynden, WA. 800-530-2746

908 Garden, Turf, Yard Equip.
 2012 Fella Rake, 29.5' swath, excellent shape, \$12,000. BRIM TRACTOR, Lynden, WA. 800-530-2746

908 Garden, Turf, Yard Equip.
 2012 Fella Rake, 29.5' swath, excellent shape, \$12,000. BRIM TRACTOR, Lynden, WA. 800-530-2746

908 Garden, Turf, Yard Equip.
 2012 Fella Rake, 29.5' swath, excellent shape, \$12,000. BRIM TRACTOR, Lynden, WA. 800-530-2746

908 Garden, Turf, Yard Equip.
 2012 Fella Rake, 29.5' swath, excellent shape, \$12,000. BRIM TRACTOR, Lynden, WA. 800-530-2746

908 Garden, Turf, Yard Equip.
 2012 Fella Rake, 29.5' swath, excellent shape, \$12,000. BRIM TRACTOR, Lynden, WA. 800-530-2746

908 Garden, Turf, Yard Equip.
 2012 Fella Rake, 29.5' swath, excellent shape, \$12,000. BRIM TRACTOR, Lynden, WA. 800-530-2746

908 Garden, Turf, Yard Equip.
 2012 Fella Rake, 29.5' swath, excellent shape, \$12,000. BRIM TRACTOR, Lynden, WA. 800-530-2746

908 Garden, Turf, Yard Equip.
 2012 Fella Rake, 29.5' swath, excellent shape, \$12,000. BRIM TRACTOR, Lynden, WA. 800-530-2746

908 Garden, Turf, Yard Equip.
 2012 Fella Rake, 29.5' swath, excellent shape, \$12,000. BRIM TRACTOR, Lynden, WA. 800-530-2746

908 Garden, Turf, Yard Equip.
 2012 Fella Rake, 29.5' swath, excellent shape, \$12,000. BRIM TRACTOR, Lynden, WA. 800-530-2746

911 Hay Equip.



FOR SALE HAY EQUIPMENT
RETIRED: New Holland 575 baler, hydraulic tongue and hydraulic tension, \$10,000. **John Deere MoCo 926**, \$10,000. **Kuhn GF5001** fluffer, \$4000. Or best offers. Hillsboro, OR. 503-939-4144

New And Used Parts: for all models New Holland bale wagons. **Largest Inventory in North America.** Sod Busters Sales, Polson, MT. 877-735-2108 or 406-883-2118

Large Supply of Rebuilt New Holland Bale Wagons: Also buying New Holland bale wagons. Sod Busters Sales, Polson, MT. 406-883-2118

Buhler Versatile 305, 2408 hours, \$79,000. 2010 Krone 3x4 HD baler, 34,830 bales, tandem axle, hydraulic brake, \$69,000. 2016 ProAg HD4SR auto align bale scoop/runner, 5204 bales stacked, only used 1 season (had purchased new), \$34,200. Albany, OR. 971-707-1869

3 used Orkel Silage Balers: Model# 1202. New flails, 1 for parts \$5000.00 for all 3, or best offer. Call Laurence Hindley, The Farm Shop, Ferndale, CA. 707-786-9541

Robbco Fodder Flaker Feeder: 2017, feeds 7 bales, excellent condition, \$20,000. Prineville, OR. 541-771-0586

Mower Conditioner: John Deere 915 flail conditioner, field ready, \$4000. Seaside, OR. 503-440-4925

Kuhn Rake 3200GE: windrow fluffer, almost new, tandem axle, excellent condition, \$4000. Seaside, OR. 503-440-4925

Hay Conveyor: 16', excellent condition, new motor, 4' extension, stored inside, \$1200. Seaside, OR. 503-440-4925

Circle C American Eagle bale stacker: 1994 International truck tandem axle with a 2003 American Eagle stacker, about 60,000 bale count, field ready, stacks all sizes of large bales. Asking \$55,000 OBO. Woodland, WA. Call or text Jay 360-713-4002

New Holland BB 960 2008, 3x4 big baler, roller chute, poly pickup bands, fully gone through beginning of 2017, \$35,000. Amity, OR. 503-435-7504
www.jonspipeandsupply.com has Monster Hay Feeders: designed for big bales, saves 30 percent of hay, pays for itself first year. 10 year warranty. Call Jon 530-949-2285

2013 New Holland Big Baler 340S: tandem axle, chamber extension, 3614 bales, \$59,000. BRIM TRACTOR, Salem, OR. 800-530-2746

Hay Squeeze- Sunny D: 2012 Oregon Roadrunner, excellent condition. Owner operated machine. Dual A/C, solid forks, scale, tilt wheels, 82,000 miles. Well maintained, kept inside, all records, \$168,500. Tulelake, CA. 541-891-6046

2011 New Holland H8080 swather, 2080 hours, 750 header, good shape, \$62,000. 14' heavy duty miller offset disk, \$6500 OBO. Redmond, OR. 541-891-4087

(6) New Porter Orchard Boss's: under 50 hours. Starting at \$45,500. Philomath, OR. 541-929-2234</