

902 Farm Equip. Parts

Starters, alternators, and generators. Call 503-364-3650 or visit Walz's Rebuilt - 348 Market St. NE., Salem, OR.

905 Antique Farm Eq. & Parts

1942 Oliver 60 orchard tractor, right out of the barn. Been here on this farm entire life, needs to be restored to its former glory. Green in color with trade for green paper money. Comes with 2 bottom plow, 6' sickle bar mower. Tualatin, OR. Call and leave a message 971-409-4266

Lindeman crawler with blade, all original, excellent condition, \$8900. Yakima, WA. 509-833-9635

907 Nursery Equip. & Supplies

FRESH SAWDUST: Consistently fair pricing. Forest-Grove, OR. For pricing call 503-849-0216

USED NURSERY CONTAINERS:

Used, but reusable nursery containers. All sizes. Inventory changes daily. Call for current availability and prices. Sawyer Farms, Scio OR. 503-769-3417, juddsfarm@wvi.com (also, wanted used containers)

908 Garden, Turf, Yard Equip.

2009 AGRIC AL40C 3 Point Rototiller: slip clutch, 40" width. Great condition, \$900. Pleasant Hill, OR. 541-747-8832

Looking for a farm or ranch?

VISIT **FarmSeller.com**

Jump Start Your Print Ads by Placing Online!

"I had calls from New York, Minnesota, Idaho & Texas before the paper came out Friday! People are obviously using your website!"

Mickelsen Dairy, Inc. Winlock, WA

Classified ads placed online go straight to the website! (on approval)

Don't wait! Place your ad right now!

Capital Press The West's Ag Weekly 800-882-6789 www.capitalpress.com

www.capitalpress.com

908 Garden, Turf, Yard Equip.

2009 Woods RDC54 Finish Mower: 3 point, for 15-25 hp tractor. Great condition, \$650. Pleasant Hill, OR. 541-747-8832

911 Hay Equip.

John Deere R450: 1828 hours, 500R header, \$77,000. John Deere R450, 2185 hours, 994 header, \$69,000. John Deere 994 header, \$22,000. Kuhn GF10802T G2 tedder, new, \$27,000. McArthur, CA. 530-521-2200

2007 Krone Baler BP1290HDP, 3x4, 31,000 bales. Good condition, \$32,000. Davenport, WA. 509-725-0392

1998 Westward (MacDon) 9300 Swather: 16' Model 922 auger header and conditioner, 2950 hours. Good condition, \$13,000. Davenport, WA. 509-725-0392

LOOK!

1997 New Holland 8670 with New Holland 7514 loader. 8700 hours, duals, bucket, grapple, foam filled tires, 3-point arms, front weights, 4 remotes, \$45,000. 2006 New Holland BB 960AS 3x4 baler. 24,283 bales, auto lube, roller chute, tandem axle, 6 twine, nice baler, \$40,000. \$80,000 for both. Lakeview, OR. 541-219-0802

Hay Equipment: New Holland baler 580, excellent condition, \$12,000. John Deere 320 tractor with 2027 twin star rake, 4300 tractor hours, \$12,000 OBO. Touchet, WA. 509-730-1119, 509-394-2387

www.jonspipeandsupply.com has Monster Hay Feeders: designed for big bales, saves 30 percent of hay, pays for itself first year, 10 year warranty. Call Jon 530-949-2285

FOR SALE HAY EQUIPMENT

RETIRED: New Holland 575 baler, hydraulic tongue and hydraulic tension, \$10,000. **John Deere MoCo 926,** \$10,000. **Kuhn GF5001 fluffer,** \$4000. Or best offers. Hillsboro, OR. 503-939-4144

New And Used Parts: for all models New Holland bale wagons. **Largest Inventory in North America.** Sod Busters Sales, Polson, MT. 877-735-2108 or 406-883-2118

Buhler Versatile 305, 2408 hours, \$79,000. 2010 Krone 3x4 HD baler, 34,830 bales, tandem axle, hydraulic brake, \$69,000. 2016 ProAg HD4SR auto align bale scoop/runner, 5204 bales stacked, only used 1 season (had purchased new), \$34,200. Albany, OR. 971-707-1869

3 used Orkel Silage Balers: Model# 1202. New flails, 1 for parts \$5000.00 for all 3, or best offer. Call Laurence Hindley, The Farm Shop, Ferndale, CA. 707-786-9541

New Holland 1030 Stack-er: pull type, 2 tie and 3 tie, fully reconditioned and field ready. Probably the nicest one available, \$11,500. Kennewick, WA. Text for photos 509-948-2564.

CHRISTMAS & NEW YEAR'S DEADLINES

For December 29th Issue: News Display & Legal Ads - Friday, Dec. 22nd @ Noon

CLASSIFIED REMAINS THE SAME

Class Display - Wednesday, Dec. 27th @ 10 am

Class Liners - Wednesday, Dec. 27th @ Noon

For January 5th Issue: News Display & Legal Ads - Friday, Dec. 29nd @ Noon

CLASSIFIED REMAINS THE SAME

Class Display - Wednesday, Jan. 3rd @ 10 am

Class Liners - Wednesday, Jan. 3rd @ Noon

1-800-882-6789

www.capitalpress.com

Capital Press The West's Ag Weekly

911 Hay Equip.

Large Supply of Rebuilt New Holland Bale Wagons: Also buying New Holland bale wagons. Sod Busters Sales, Polson, MT. 406-883-2118



Robbco Fodder Flaker Feeder: 2017, feeds 7 bales, excellent condition, \$20,000. Prineville, OR. 541-771-0586



International chassis with a Cummins M11 and Allison transmission. Stacker has quarter turn on it so stack either strings down or on end. Lots of extras with this truck. Stacks 3x3, 3x4 or 4x4's, \$40,000. More info on request. Send me a message or call me. Burns, OR. 541-589-5805

#1 Balewagons: Buy, Sell, New Holland 2&3 wide self-propelled, pull-type models, parts, tires, manuals. Caldwell, ID. 208-880-2889 www.balewagon.com



New 2016 McHale F5500 Round Baler, 4x4, 15 knives, \$39,000. BRIM TRACTOR, Lynden, WA. 800-530-2746



2012 Fella Rake, 29.5' swath, excellent shape, \$12,000. BRIM TRACTOR, Lynden, WA. 800-530-2746



2013 New Holland Big Baler 340S: tandem axle, chamber extension, 3614 bales, \$59,000. BRIM TRACTOR, Salem, OR. 800-530-2746

2012 New Holland BC 5080 Baler: 8 to 10 pack small bales, new Steffen 950 baler accumulator, new Steffen bale fork. Accumulator and fork stored indoors, ran about 100 bales. Field ready, \$39,000 OBO for all. Cash or certified check only. Near Northern Logan, UT. Call/ text 435-760-1965

911 Hay Equip.

Pequea 1820HD 28' wheel rake, 9 wheels per side, \$7000. Albany, OR. 503-510-7779



John Deere 4890 Swather: 2001, 890 16 foot header with reverser, steel roller conditioner, 1052 hours. Superb, nearly new condition inside and out, \$41,000. Kennewick, WA. Text for photos 509-948-2564.

Case IH8840 Swather: 1450 hours, 12' specialty crop header, UHMW lined \$12,000. Banks, OR. 503-314-8484

New Holland H9880 Bale Wagon. 2009, 850 hours, 8300 miles with Milstack, and small pickup. Excellent condition. Southern Oregon. 541-892-2814

Hay Squeeze- Sunny D: 2012 Oregon Roadrunner, excellent condition. Owner operated machine. Dual A/C, solid forks, scale, tilt wheels, 82,000 miles. Well maintained, kept inside, all records, \$168,500. Tulelake, CA. 541-891-6046

2011 New Holland H8080 swather, 2080 hours, 750 header, good shape, \$62,000. **14' heavy duty miller offset disk,** \$6500 OBO. Redmond, OR. 541-891-4087

RCO Baits Gophers • Squirrels Voles-Moles **Ask for Your Capital Press Discount** Dealer Locator **1-800-214-2248** Harrisburg, OR 50-1100

914 Potato/Sugar Beet Equip.

2 row potato cup planter "Curl", cutter, sorter, 2 row cultivator, 200 gallon PakTank, drum washer, 2 row digger. Trout Lake, WA. 509-637-4652

917 Orchard/Vineyard Equip.



2008 836 Weiss McNair harvester with 2016 Wiesner nut cart, first new chain in harvester, \$50,000 for the pair. Silverton, OR. 503-932-0766

PRICE Reduced



Gillison Pruning Tower: 25', 1583 hours, hydraulic adjusting axles, heated bucket, excellent condition, \$25,500. St. Paul, OR. 503-932-2371

(1) Graftech- air with head, ram, foot pedal, and air trap. Grape or tree grafting, \$500. Salem, OR. 503-585-9835

Don't Miss Out!



(6) New Porter Orchard Boss's: under 50 hours. Starting at \$45,500. Philomath, OR. 541-929-2234

2010 Weiss McNair 9800P Hazelnut Harvester with Cart: Herbst Hi/ Lo rear dump cart. Harvester equipped with rear steering wheels. **Cart with Herbst Desticker,** can dump straight into truck. Excellent condition, \$57,000 for the pair. Silverton, OR. 971-344-4742

Tallman Aluminum Picking Ladders: 10', \$80; 12', \$100. Also two ladder trailers, \$500/ each. Gervais, OR. 503-991-1515

Looking for ORCHARD/VINEYARD PROPERTY? Go to Class. 570

Capital Press The West's Ag Weekly www.capitalpress.com 1540-1-52-4/#13

920 Tractors

Attention: Wanted Kubota or John Deere, 4x4 compact tractor with loader/ equipment. Carlton, OR. 503-550-0094

920 Tractors

7120 Case IH. Rebuilt engine 1800 hours ago. Fresh paint. Newer duo. Fronts 40%. Excellent shape, \$39,500. Sauvies Island, OR. 971-678-7284

Tractors: International 986 tractor with 2450 loader and grapple, modified cab, good condition, 6289 hours, \$7500. **4020 tractor** with cab, runs well, good shape, 2797 hours, \$8500. Touchet, WA. 509-730-1119, 509-394-2387

504 International 45hp, gas, power steering, 3 point, remote hydraulics, new paint, runs great, \$4750. Stayton, OR. 503-859-2063

John Deere 6420: MFD, 4700 hours, 18.4/38" tires with duals, power quad, \$44,000. Salem, OR. 503-932-0933

International 140 Cultivating Tractor: narrow tires, good condition, \$3500. Salem, OR. 503-932-0933

Case IH 435 HD: new Michelin tires, 3pt, 3600 hours, Auto steer valve, nice, \$150,000. Silverton, OR. 503-932-0766

International 756, 80 HP, diesel, new tires, 3 point, 2 remotes, 540 and 1000 pt, good tin, \$8500. Salem, OR. Steve 503-580-4261



2005 John Deere 5425, 2700 hours, 542 loader with 8.5' Vasser disc, \$39,500 (without disc, \$36,500). Mt. Angel, OR. Mike 503-932-2499

STEIGER COUGAR II: 8 wheel, 10 speed, 4WD tractor with a CAT motor. This tractor has 9200 hours, runs great, and pulls like a dream. Tires are about 70%. If interested call Mike 509-261-0962. Goldendale, WA. 509-261-0962

#1 Massey Ferguson Tractors: Oregon City, OR. 503-631-3411

40-20 John Deere tractor with 158 front end loader with custom 2 or 4 spear bale forks. 9571 hours, 1500 hours on motor over haul. New seat, reinforced front axle, tire chains. Good running machine, \$10,000. Cottonwood, ID. 208-790-6718



John Deere 8100: 8660 hours, 520/42 rear duals, greentstar ready, approximately 1000 hours on John Deere reman transmission. Excellent condition, \$55,000, OBO. Amity, OR. 503-932-0543



1995 John Deere 8770 7516 hours meticulously maintained with records, kept inside, 2nd owner since new, 20.8-42 tires at 45%, front and rear differential lock, cast wheel weights, 3 remotes, 24 speed partial power shift, \$37,000 Omak, WA. Call with questions, pictures available. Chuck 509-322-2032

John Deere 8400: 7500 hours, 200 hours on new transmission, \$55,000 OBO. Sheridan, OR. Brian 971-241-0344



(2) John Deere Tractors. Can be sold separate. John Deere 6410, one owner, MFWD, self-leveling 640 loader/ bucket, left hand reverser, 16 speed, 18.4x38 rears at 60%, 3800 hours, \$40,000. John Deere 6200, second owner, MFWD, newer self-leveling 640 loader/ bucket, 16 speed with shuttle, all brand new tires, 18.4x38 rears, 7800 hours, \$25,000. Both are solid tractors. Call David, Powell Butte, OR. 541-280-4517



MINNEAPOLIS MO-LINE: Jet Star3 Super, 45 hp, \$6,500; **Jet Star 45 hp,** \$5,500; **M670 Super** 75 hp, \$12,000. All gas, 3pt, 2 remotes, live PTO, hi/ lo range. ALSO: **Z3 tractor,** 37 hp, \$450; **MM loader,** \$450; **MM 10ft wheel disk,** \$1,600. Additional photos online. Newberg, OR. 503-538-5005

PLACE LINE CLASSIFIED ADS TOLL-FREE FROM ANYWHERE! 1-800-882-6789

920 Tractors

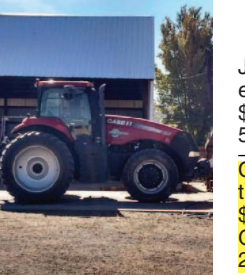
1980 Case 4890, 20.8x34 singles, PTO 9234 hours. Good condition, \$6,500. Davenport, WA. 509-725-0392



2006 STX380 Case, articulated, 4184 hours, 16' Degelman blade, gps, \$155,000. **2004 John Deere 4710,** self propelled sprayer, 90' booms, 3488 hours, gps, tires at 50%, \$55,000. Sunnyside, WA. 509-840-0424



1973 John Deere 4230: diesel, power shift, 7060 hours, cab. Very clean, \$14,500 OBO. Central, WA. 206-459-8925



2014 Case 235 IH Magnum Tractor: Excellent condition, 1600 hours, \$116,000. Fall River Mills, CA. 530-227-3411

Case IH 265: belly mount cultivator, offset, excellent condition, \$10,000. **Super C Tractor** with belly mount cultivator, \$3000. Blue Lake, CA. 707-834-4115

Don't Miss This One!



Cleanest John Deere 4020 in southern Idaho. Ezee on loader with bucket and pallet forks. Must see! \$20,000 OBO. Buhl, ID. 208-539-3344

2011 Case IH 550 Quad Track: 36" tracks, PTO, diff lock, 2500 hours. Good condition, \$225,000. Rufus, OR. 541-980-5976



8360RT John Deere, 2013 model year, 3270 hours. Warranty until Feb. 2019. 30" tracks at 80%, stored inside, excellent condition. \$164,500. Ritzville, WA. 509-660-0086

2012 John Deere 8235R: 2350 hours, IVT, nice tractor. \$145,000. Albany, OR 503-510-7779

Christmas Special!



2006 New Holland TM130: 105 HP, 20 speed, shuttle shift, 4WD, cab, (3) remotes, 4000 hours, new loader. Good condition, \$49,900. Southeastern, OR. 541-219-0741



8330, 5800 hours, \$90,000. 6230 Premium, 3080 hours, \$45,000. 6105D, 785 hours, \$45,000. 5085M, 1390 hours, \$40,000. 5045D, 350 hours, no cab, \$13,000. 2550 with loader, 8000 hours, \$15,000. McArthur, CA. 530-410-5755

www.trailer-world.com • www.trailer-world.com

NEW BRANSON 2400h

MSRP \$20,118.20
Reg. Price \$16,230.00
Front Loader
Inst. Rebate \$2,231.00
Sale Price \$13,999

- 24 HP Diesel Engine
- 1060 lb. Front Loader Full Height Lift Capacity
- 87.6" Loader Lift Height at Pivot Pin
- Hydrostatic Steering • Dual Hydraulic Pumps
- Cast Iron Rear End and Transmission Housing
- Two-Speed Rear PTO • Differential Lock
- Four Year Drive Train Warranty
- Available Backhoe in stock

Many models to choose from, up to 80HP, in stock now!

TRAILER WORLD John 3:16
A Division of TRAILER SALES

551 SE 13th St., Ontario, OR 97914 (541) 889-4310

1241 Evergreen Rd., Woodburn, OR 97071 (503) 981-8777

www.trailer-world.com • www.trailer-world.com

920 Tractors

John Deere 4240: 8000 hours, runs and works great, \$15,300 OBO. Sheridan, OR. 503-434-7692

John Deere 8520: ILS front end, tires 80%, tractor in excellent shape, full auto steering, 6600 hours, \$100,000 OBO. Sheridan, OR. 503-434-7692

YanMar 336D. Warren-ton, OR. 503-407-9035

923 Farm Equipment

WANTED: 26' heavy harrow. Oregon area. 503-849-5316

2006 MacDon 9352i swather, 972 15' header, 3253 hours, \$35,000 OBO. **2004 MacDon 9352i,** 933 14' header. Carlton, OR. 503-849-5316

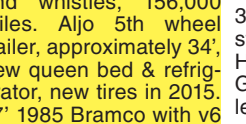


John Deere 40 sweeper, 1031 hours, nice, \$27,000. Silverton, OR. 503-932-0766

Case IH 25' 415 Cultipacker: good shape, \$23,000 OBO. Forest Grove, OR. 503-310-2524

Hay Buster H1000: #S11637, 3 screens, conveyor belt, bearings, and knives good, PTO, single axle, \$6500. New Holland 8 forage wagon, \$3500. Wamic, OR. 541-980-8923, rmcattle@hughes.net

\$25,500 For everything listed: 2005 GMC Sierra 3500, crew cab, long box with spray on liner, diesel with Allison transmission, has all the bells and whistles, 156,000 miles. Aljo 5th wheel trailer, approximately 34', new queen bed & refrigerator, new tires in 2015. 17' 1985 Bramco with v6 motor. Buy all or can split up, you tell me. Old age is why I'm selling, meaning me. Don't feel safe driving on long journeys anymore. Also 1942 Oliver 60 orchard tractor, right out of the barn. Entire life on this farm. Needs to be restored to its former glory. Green in color with trade for green paper money. Comes with 2 bottom plow, 6' sickle bar mower. Make offer if you can. \$25,500 for all. Tualatin, OR. Call and leave a message 971-409-4266



3000 Gallon stainless steel tank, full baffle, 2" Honda pump on 1973 GMC truck, \$15,000. Salem, OR. 503-932-0039

John Deere 615P Grass Header: 3 belt, very nice. Boardman, OR. 541-571-7139

T600 Allis Chamers loader, backhoe, tractor: runs great, everything works, asking \$5000. Gaston, OR. 503-351-8454

15' Loftness flail, good shape, \$3500 OBO. Forest Grove, OR. 503-310-2524

John Deere 8820 with belt pickup, good condition, \$7500. Rickreall, OR. 503-930-190