

907 Nursery Equip. & Supplies



MAYER POTTING MACHINE: Excellent working condition. This sturdy machine greatly speeds the potting of nursery stock. 3 phase power, \$5900. Molalla, OR. 503-651-3737

REARS NIFTY SPRAYER: 25 gallon. Recently refurbished with new Briggs & Stratton gas motor, 100' hose and new nozzle. Easy to use and maneuver, \$795. Molalla, OR. 503-502-6925

907 Nursery Equip. & Supplies

USED NURSERY CONTAINERS: Used, but reusable nursery containers. All sizes. Inventory changes daily. Call for current availability and prices. Sawyer Farms, Scio OR. 503-769-3417, juddsfarm@vwi.com (also, wanted used containers)

FRESH SAWDUST: Consistently fair pricing. Forest-Grove, OR. For pricing call 503-849-0216

911 Hay Equip.



Hustler Bale Feeder CHX5000: Demo- unit, trailed, hydraulic, 5' wide table, big square or round bales. List \$18,750, Special price, \$15,750. Yakima Implement 1-800-572-2239 yakimple@qwestoffice.net



3 used Orkel Silage Balers: Model# 1202. New flails, 1 for parts \$5000.00 for all 3, or best offer. Call Laurence Hindley, The Farm Shop, Ferndale, CA. 707-786-9541

New And Used Parts: for all models New Holland bale wagons. **Largest Inventory in North America.** Sod Busters Sales, Polson, MT. 877-735-2108 or 406-883-2118

Large Supply of Rebuilt New Holland Bale Wagons: Also buying New Holland bale wagons. Sod Busters Sales, Polson, MT. 406-883-2118



Robbco Fodder Flaker Feeder: 2017, feeds 7 bales, excellent condition, \$20,000. Prineville, OR. 541-771-0586

New Holland 1065 Harrow Bed: new trans and clutch, works good, \$9,000. Loyalton, CA. 530-993-1199

New Holland BR7080 round baler: 2009, low hours, twine/ net, barn kept, excellent condition, field ready, \$18,000. Southwest, MT. 406-741-2650, 509-935-0580

911 Hay Equip.

Freeman 330 Hydraulic Baler: 16x23, good working condition, \$6500. Loyalton, CA. 530-993-1199



International chassis with a Cummins M11 and Allison transmission. Stacker has quarter turn on it so stack either strings down or on end. Lots of extras with this truck. Stacks 3x3, 3x4 or 4x4's, \$40,000. More info on request. Send me a message or call me. Burns, OR. 541-589-5805

(2) Hesston 2170XD Balers: clean, serviced daily and stored inside, most maintenance records, approximately 47,000-48,000 bales, \$42,000 each OBO. Hubbard, OR. 503-710-7577

#1 Balewagons: Buy, Sell, New Holland 2&3 wide self-propelled, pull-type models, parts, tires, manuals. Caldwell, ID. 208-880-2889 www.balewagon.com

BB900 New Holland Baler, 3- tie, 970 hours, excellent condition, \$21,000 OBO. Super 1048 Harrow Bed, \$14,000. Lakeview, OR. 530-227-5700



New 2016 McHale F5500 Round Baler, 4x4, 15 knives, \$39,000. BRIM TRACTOR, Lynden, WA. 800-530-2746



Freeman 5400 Big Bale Roadsider: 8000 hours, new tires, new a/c parts, radio, hauls 3x4 and 4x4 bales Cummins engine, Allison transmission, good shape, \$42,500. Klamath Falls, OR. 541-591-0746

Case IH8840 Swather: 1450 hours, 12' specialty crop header, UHMW lined \$12,000. Banks, OR. 503-314-8484

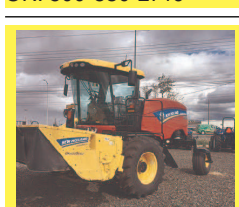
911 Hay Equip.



2012 Fella Rake, 29.5' swath, excellent shape, \$16,000. BRIM TRACTOR, Lynden, WA. 800-530-2746



2013 New Holland Big Baler 340S: tandem axle, chamber extension, 3614 bales, \$59,000. BRIM TRACTOR, Salem, OR. 800-530-2746



2015 New Holland Speedrower 260, DB416 head, 201 hours, \$99,000. BRIM TRACTOR, Salem, OR. 800-530-2746

1998 Case 8555: 2 string baler, new knotters, good condition, \$7000. Amity, OR. 503-437-1031

Speed rake, Kuhn, 12 wheel, excellent condition, \$4300. **Baler,** Hesston 4655, 2 string in-line, \$7500. **Swather,** Hesston 1270, hydro-swing, \$7200. Burns, OR. 541-493-2837

Case IH8840 Swather: 1450 hours, 12' specialty crop header, UHMW lined \$12,000. Banks, OR. 503-314-8484

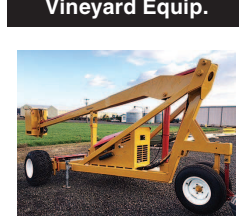
911 Hay Equip.

John Deere R450: 1828 hours, 500R header, \$77,000. John Deere R450, 2185 hours, 994 header, \$69,000. John Deere 994 header, \$22,000. Kuhn GF10802T G2 tedder, new, \$27,000. McArthur, CA. 530-521-2200

2007 Krone Baler BP1290HDP, 3x4, 31,000 bales. Good condition, \$32,000. Davenport, WA. 509-725-0392

1998 Westward (MacDon) 9300 Swather: 16' Model 922 auger header and conditioner, 2950 hours. Good condition, \$13,000. Davenport, WA. 509-725-0392

917 Orchard/ Vineyard Equip.



Gillison Pruning Tower: 25', 1583 hours, hydraulic adjusting axles, heated bucket, excellent condition, \$27,500. St. Paul, OR. 503-932-2371

Weiss McNair "Getzumal" Hazelnut Harvester: 5' pickup header, 3' elevator chain. Excellent condition, field ready. With 2 tote bump cart. Not an 836, \$14,000. Salem, OR. 503-932-8270

Tallman Aluminum Picking Ladders: 10', \$80; 12', \$100. Also two ladder trailers, \$500/ each. Gervais, OR. 503-991-1515



Case/ IH JX1100U: 2006, 3800 hours, 4WD, cab, air, shuttle, PTO 85HP, \$20,000. Prineville, OR. 541-771-0586

2008 836 Weiss McNair harvester with 2016 Wiesner nut cart, first new chain in harvest-er, \$50,000 for the pair. Silverton, OR. 503-932-0766

923 Farm Equipment

917 Orchard/ Vineyard Equip.

Looking for ORCHARD/ VINEYARD PROPERTY? Go to Class. 570

Capital Press
The West's Ag Weekly
www.capitalpress.com
1540-1-52-4/#13

TALLMAN LADDERS

Crafted for Safety, Longevity, Stability and Affordability!



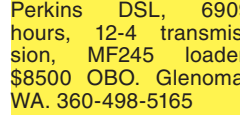
Quality Made in the U.S.A. Since 1954

tallmanladders.com
(541) 386-2733 (800) 354-2733

920 Tractors



2006 New Holland TM130: 105 HP, 20 speed, shuttle shift, 4WD, cab, (3) remotes, 4,000 hours, new loader. Good condition, \$52,500. Lakeview, OR. 541-219-0741



1977 Massey Ferguson 285: with loader, SN#9A254045, 81hp, Perkins DSL, 6909 hours, 12-4 transmission, MF245 loader, \$8500 OBO. Glenoma, WA. 360-498-5165



Case IH 4494 Tractor with 7000 hours: 200 hp, 4 new inside tires, PTO and 3- Point hitch. Everything works, no leaks, good condition, \$21,000. Pictures available. Middleton, ID. 208-477-8019

923 Farm Equipment

920 Tractors



Used John Deere 2240 Tractor: \$5,500 OBO. Call Laurence Hindley, THE FARM SHOP, Ferndale, CA. 707-786-9541

Good Condition: 424 International 3- point with loader. A must for every day farm/ ranch chores. Good tires, positraction , diesel, \$6500. Astoria, OR. 503-325-2068



2014 Kubota MX5200 HST: 200 hours, 1065 loader, M4 tires, \$26,000. Goldendale, WA. 509-250-0571



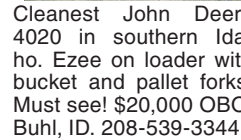
1959 730 John Deere diesel tractor, 65 hp, runs good, extra clean. Grants Pass, OR. 541-479-4711

Attention: Wanted Kubota or John Deere, 4x4 compact tractor with loader/ equipment. Carlton, OR. 503-550-0094

7120 Case IH. Rebuilt engine 1800 hours ago. Fresh paint. Newer duals. Fronts 40%. Excellent shape, \$39,500. Sauvie Island, OR. 971-678-7284

John Deere 8400: 7500 hours, 200 hours on new transmission, \$55,000 OBO. Sheridan, OR. Brian 971-241-0344

1980 Case 4890, 20.8x34 singles, PTO 9234 hours. Good condition, \$6,500. Davenport, WA. 509-725-0392



2006 Kubota B7510 HSD, MFWD, LA302 loader, 338 hours, \$10,500. Agric AL40C tiller, \$1050. Woods RDC54F finish mower, \$750. Always in shed. Pleasant Hill, OR. 541-747-8832

923 Farm Equipment

920 Tractors

John Deere 1020 Hard Nose Orchard Tractor: \$5,750. Arlington, WA. 425-508-6440

8440 John Deere 230hp, recent engine work, \$17,000. **2040 John Deere,** good condition, \$7000. Amity, OR. 503-437-1031



2014 Kubota MX5200 HST: 200 hours, 1065 loader, M4 tires, \$26,000. Goldendale, WA. 509-250-0571



1959 730 John Deere diesel tractor, 65 hp, runs good, extra clean. Grants Pass, OR. 541-479-4711

Attention: Wanted Kubota or John Deere, 4x4 compact tractor with loader/ equipment. Carlton, OR. 503-550-0094

7120 Case IH. Rebuilt engine 1800 hours ago. Fresh paint. Newer duals. Fronts 40%. Excellent shape, \$39,500. Sauvie Island, OR. 971-678-7284

John Deere 8400: 7500 hours, 200 hours on new transmission, \$55,000 OBO. Sheridan, OR. Brian 971-241-0344

1980 Case 4890, 20.8x34 singles, PTO 9234 hours. Good condition, \$6,500. Davenport, WA. 509-725-0392



2006 Kubota B7510 HSD, MFWD, LA302 loader, 338 hours, \$10,500. Agric AL40C tiller, \$1050. Woods RDC54F finish mower, \$750. Always in shed. Pleasant Hill, OR. 541-747-8832

Cleanest John Deere 4020 in southern Idaho. Ezee on loader with bucket and pallet forks. Must see! \$20,000 OBO. Buhl, ID. 208-539-3344

923 Farm Equipment

Print and online Ag News for ranchers, farmers, vintners, nursery people and more!

ANYTIME ANYWHERE

Capital Press
The West's Ag Weekly

Start your Capital Press subscription. Call **1-800-882-6789** Fax 503-370-4383 www.capitalpress.com

AN AG ESSENTIAL
Capital Press
The West's Ag Weekly

Our Mission: to provide the Ag Community with timely, thorough news plus advertising that enriches our reader's pocketbooks and lives.



Now more ESSENTIAL than ever!

Twitter Facebook YouTube
CapitalPress.com OnlyAG.com OnlyAGNOW.com Farmseller.com Blogiculture.com back4d.com AgDirectoryWest.com

Miss a week... Miss a GREAT DEAL!

With *low* equipment, operational and maintenance *costs*, **Air King** industrial air cleaners are an *economical* way to *improve* your overall *air quality*.

M-30

SPECIAL \$1,900

Applications: Welding smoke/fumes, Grinding dust, Bondo dust, Oil mist, Diesel fumes, Printing powder, Plastic dust, Other smoke/dust contaminants

Installation Methods: Hung with chains, Mounted with all-thread rods, Installed using wall brackets

Features: Disposable filters, Self-contained, Easy installation & maintenance, Four way louvers, 16 gauge powder coated construction, Filter change indicator (optional), Multiple filter configurations available, Easily relocated

Benefits: Cleaner, healthier environment, Versatility to be used most anywhere, Cost effective, Airflow pattern control, Durable, Identifies filter change needs, Solutions to fit your specific needs, Accommodates growth or space redesign

Klopfenstein Ag Service
503-932-0766 • farmtrailer@gmail.com • Silverton, OR