

**878 Generators**



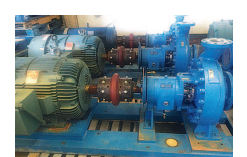
**GENERATORS:** Low hour takeouts, 20kW to 2000kW, diesel, propane, & natural gas. Cooperstown, ND. We ship nationwide. 701-371-9526 or 701-367-4305 [abrahamindustrial.com](mailto:abrahamindustrial.com)

1200 kW Stewart & Stevenson Generator Set and 40' trailer. Detroit 16V 149TI with 2300 hours. Will separate. Make Offer. Kingston, WA. 360-620-3452

**881 Shop Equip. & Tools**

Coffing 500 lb electric hoist, comes with an I-beam, 12"x5"x1/2", 28.7", \$1500. Newberg, OR. 503-538-3825

**887 Irrigation Equip.**



(12) 316 SS Gould Pumps: with 250 HP motor, excellent condition, \$14,950 each. Hermiston, OR. 541-571-0514 email: 53hchull@gmail.com

Traveler Big Gun Irrigation Reel: Kifco B series, 350' hose. Works great, well cared for, \$5,000 OBO. Trout Lake, WA. 509-637-0239



(450+) Sticks of 3x40 Moore rain, risers, sprinklers, \$55/ per stick OBO. Hillsboro, OR. 503-936-3336

(5) 1/4 mile Farmland Wheel Lines: 76" wheels x 4" aluminum pipe, gear reduction/ chain drive movers with Honda motors, \$1500 each. Western Idaho. 208-250-7148

"The Capital Press is IT!" Lorin Zastoupil • Leaburg, Ore. Subscribe at 1-800-882-6789

**887 Irrigation Equip.**

900 Joints 3"x40" Rain for Rent aluminum drop lock Irrigation pipe. 25' risers with mainly Rain Bird impact sprinklers and a few Nelson impacts. \$40/ joint. Malin, OR. 541-591-1133

**(60) Used Pivots: Engines, pumps, Garden Valley, ID. Call Mike at 208-420-1480, or see [www.pivotsplus.com](http://www.pivotsplus.com)**

**Pivots:** Good, various lengths, all brands & late models. No rust. Plus some pivot parts, and buried wire. Call Keizer, OR. 503-881-3232, 503-390-3210

**IRRIGATION EQUIPMENT BOUGHT. SOLD. RENTAL.**

Design of Effluent Handling Systems - Gates, Valves & Aerators New & Used Parts. • Aluminum Pipe • Certa-lok • Siphon Tubes • HDPE • Sand Media Filters • Wheel Lines • Pumps



Office: (209) 460-0450 Fax: (209) 982-1832 [www.pacsouthwestirrig.com](http://www.pacsouthwestirrig.com) Carlos (209) 481-7677 Jim (209) 986-0099 887-44-4-2/102

**893 Logging Equip.**

Older Machinery: House log machinery, chippers, vans, debarker, new rock blade, John Day, OR. 541-575-1525

**896 Forklifts**



Estate Sale: Like New 2016 Bobcat ToolCat 5600, 85 hours, diesel, road package, all-wheel steering, heat/ AC, dump bed, bucket, pallet forks. Perfect for snow plowing. Asking \$54,000. Lyle, WA. 509-310-3662

**887 Irrigation Equip.**

**896 Forklifts**



Liftall L50 diesel towable forklift, 5000 lbs, side shift, very good condition, \$10,000. Bonanza, OR. 541-545-6458 evenings

**Diesel Engines For Sale:** came from hyster lift trucks. Yanmar 3.3L, 2012, less than 100 hours, \$1950. Kubota V3600-T, 2011, tier 3 with SAE3 housing, approximately 2000 hours, \$1850. Kubota 3.8L engines, low hours, no engine control unit- use as parts. Oregon City, OR. 503-631-8487

**Used Lift Trucks**

Also New & Used Parts All sizes, makes & prices **LIFT TRUCK SERVICE 888-890-1450** [forkliftsales.com](http://forkliftsales.com) Ellensburg, WA 888-890-1450

**899 Heavy & Indust. Eq.**

Dresser TD-40 Dozer: single shank ripper, semi- U blade, \$55,000. Paisley, OR. O'Leary Equipment. 541-943-3318. Leave a message.

T600 Allis Chalmers loader, backhoe, tractor: runs great, everything works, asking \$5000. Gaston, OR. 503-351-8454



350 Diesel Case Dozer: 6 way blade, starts, steers and stops good. Runs strong, dependable, \$14,500. Salem, OR. Call Paul 503-999-5215



D7F: 80% under carriage, tilt blade, Hyster Hi Arch drum, fresh rebuilt motor, \$24,999. Independence, OR. 503-917-1229

**621 CAT SCRAPER** Updated with 3306 Cat Engine, 2517 hours, good rubber, good condition, \$24,000. Wamic, OR. Call 541-980-8923 or [rmcattle@hughes.net](mailto:rmcattle@hughes.net)

Parts Machine Fiat Allis 21-C: blades, drum, ripper. Fiat Allis 31-B, plus parts machine. Balderston chip dozer blade. Rainier, OR. 503-556-5503

**899 Heavy & Indust. Eq.**

Straight blade for a D4 Cat: blade, side plates, cylinders, some hoses, \$1200. Burns, OR. 541-573-2772

**CAT 623-B:** Self-loading scraper, good condition, \$39,500. **D-6 H U-dozer** with tilt and ripper, near new engine and hydraulic pump, \$86,500. Salem, OR. 503-362-3055

**503-544-3232 • 503-407-9062 "We Buy Equipment"**

John Deere 450j Dozer.....	\$60,000.00
John Deere 330 Exc.....	\$24,000.00
Kobelco 80 Exc.....	\$52,000.00
Kobelco 135 Exc.....	\$36,000.00
2016 Almand Light Tower.....	\$6,000.00
Hitachi 120 Exc.....	\$24,000.00
Caterpillar 825 Compactor.....	\$9,500.00
1999 Gmc Water Truck.....	\$14,000.00
42" Ir Double Drum Roller.....	\$2,500.00
Komatsu Pc220 Exc.....	\$29,000.00
Skytrack Reach Forklift.....	\$22,000.00
John Deere 772a Grader.....	\$27,000.00
Kubota 161 Exc.....	\$28,000.00
Hampton Tower Lift.....	\$25,000.00
Dresser Doze.....	\$18,000.00
Terex Skip Loader.....	\$13,000.00
Fiat Allis Wheel Loader.....	\$12,000.00
Komatsu Pc360 W/ Jaw.....	\$20,000.00
Snorkel Tb60.....	\$14,000.00
Generator Trailer.....	\$10,000.00
Mac Dump Truck.....	\$5,000.00
1997 Commander End Dump.....	\$15,000.00
Kubota M5950 Tractor.....	\$9,500.00
Hustler Wide Mower.....	\$7,500.00

**buzzardsequipment.net**

**899 Heavy & Indust. Eq.**

Grader CAT12: very clean, extra tires, nice cab, front blade, \$11,000. Silver Lake, OR. 541-410-8813

TRUCK SCALES: 87' steel deck low profile, 34' steel deck. Canby, OR. 503-803-1926

**NOW RENTING! CAT-D8T SU** w/3-shank mounted ripper **ATIMACHINERY.com 888-461-0625** Five Points, CA 46-1100

**CASE INDUSTRIAL PARTS** We sell genuine, after market, and used CASE parts at discount prices nationwide. Call For Free Catalog. **CENTRAL EQUIPMENT AFTER MARKET & USED PARTS Medford, OR (888) 593-8749** 889-444-3100

**902 Farm Equip. Parts**



Kubota 84" Bucket M1284 quick attach hookup: fits Kubota LA1301, LA1601 loaders. Like new condition, never used, \$475. Hillsboro, OR. 503-899-7552

Starters, alternators, and generators. Call 503-364-3650 or visit Walz's Rebuilt - 348 Market St. NE., Salem, OR.

**899 Heavy & Indust. Eq.**

**905 Antique Farm Eq. & Parts**

1949 Ford 8N Tractor, recent restoration, comes with plow, disc, 3 point boom, 3 point box, \$4000. Newberg, OR. Call for details 503-538-3825

**907 Nursery Equip. & Supplies**

**FRESH SAWDUST:** Consistently fair pricing. Forest-Grove, OR. For pricing call 503-849-0216



**MAYER POTTING MACHINE:** Excellent working condition. This sturdy machine greatly speeds the potting of nursery stock. 3 phase power, \$5900. Molalla, OR. 503-651-3737

IT'S SO EASY TO PLACE CAPITAL PRESS CLASSIFIED ADS... PHONE TOLL FREE 1-800-882-6789

**902 Farm Equip. Parts**

**907 Nursery Equip. & Supplies**

REARS NIFTY SPRAYER: 25 gallon. Recently refurbished with new Briggs & Stratton gas motor, 100' hose and new nozzle. Easy to use and maneuver, \$795. Molalla, OR. 503-502-6925



(2) Used Nursery Conveyors, 60'. Possible dual fuel Honda engines, \$1500 Cornelius, OR. (503)849-0216

**USED NURSERY CONTAINERS:**

Used, but reusable nursery containers. All sizes. Inventory changes daily. Call for current availability and prices. Sawyer Farms, Scio OR. 503-769-3417, [juddsfarm@wvi.com](mailto:juddsfarm@wvi.com) (also, wanted used containers)

**902 Farm Equip. Parts**

**Nyssa Tractor & Implement**

Our yard has 5 miles of road, the rest is Farm Machinery & Parts.

[www.nyssatractor.com](http://www.nyssatractor.com)

Toll Free (888) 372-4020

Nyssa, OR

**ASSOCIATED TRACTOR SERVICE INC.**

NEW • USED • REBUILT PARTS

PARTS • SERVICE • EQUIPMENT

PARTS ★ SERVICE ★ EQUIPMENT

- Used Parts
- National Locator Services
- BEGE Hydraulic Pumps & Parts

CALL NOW & CHECK OUR INVENTORY

Satisfaction Guaranteed Since 1954

**800-735-1301 • 209-466-3003**

1323 W. Charter Way, Stockton, CA 95206-1110

**BIG TRACTOR PARTS, INC.**

~ GEARED FOR THE FUTURE ~

**STEIGER TRACTOR SPECIALIST**

- We are your source for new & used Steiger drivetrain parts Series 1 - 9300 Series.
- We rebuild Spicer manual transmissions, Fuji power shift transmissions, dropboxes & axle with ONE YEAR WARRANTY!
- We now rebuild computer control boxes for Steiger tractors 1982-1999.

**800-982-1769**

[www.bigtractorparts.com](http://www.bigtractorparts.com)

**Your Leading Source for Irrigation Supplies**

**HPs Pipe & Supply**

• Drip Irrigation • Filtration • Design

598 Baseline, Cornelius, OR 97113

Phone (503) 357-4217

[www.hpspipe.com](http://www.hpspipe.com)

rickw@hpspipe.com

Trade Ally of EnergyTrust of Oregon

**ERNST IRRIGATION**

"We understand your water needs. Let our experienced staff assist you with all your water quality and quantity needs."

**PRODUCTS:**

- T and C 1/2"-6"
- Filtration
- Valves
- Sprinklers
- Water Meters
- Chemical Injection
- Bandit Clamps
- Aluminum Irrigation Fittings & Pipe 2"-10"
- Wheelines & Wheeline Fittings
- Hard Hose Travelers
- Linears • Pivots • K-Line POD Irrigation
- Water Pumps
- Steel Pipe & Fittings 1/2"-12"
- PVC Fittings & Pipe 1/2"-18"
- Low Volume/Micro Irrigation Drip Hose 1/2"-2"
- Angus Drag Hose 2 1/2"-5" Suction & Discharge Hose

**SERVICES:**

- Design & Consultation • Pumps & Panels, including Variable Frequency Drives • Traveler Repair, all makes & models • Field Fabrication
- Big Gun Rebuilding • Water Testing / Flow & Quality

Ask about Government Cost Share Subsidy Programs

**www.ErnstIrrigation.com (503) 633-1111**

20179 Main St., St. Paul, OR 97137

**HYDROMATIC CENTER PIVOTS**

SAVE 30-40% ON NEW PIVOTS

- Hot dip galvanized pipe
- Steel or aluminum pipe
- Poly Lining available
- Optional tire sizes
- Partial circle irrigation
- Fixed and towable pivot points

[pcrowe@hydromaticcenterpivots.com](http://pcrowe@hydromaticcenterpivots.com)

**775.217.5570**

**NEW SCALES** Built • Delivered • Installed Leased • Rental Scales

**USED SCALES** Bought • Sold • Traded Repaired • Rental Scales

**SCALES NORTHWEST**

**RICE LAKE SCALES**

- Long life
- Easy set-up
- Proven design
- Permanent installations
- Mechanical
- Levertronic
- Full electronic
- Low maintenance

We Now Stock Rice Lake Mobile Livestock Scales! We are happy to announce the opening of our third Idaho location. We look forward to serving Eastern Idaho from Pocatello.

Scales Available For Rent!

<b>OREGON</b>	<b>WASHINGTON</b>	<b>IDAHO</b>
SALES (800) 451-0187	SALES (800) 859-6991	NEW OFFICE!
SERVICE (866) 934-4446	SERVICE (866) 934-4446	SALES (800) 451-0187

Visit us online at [www.scalesnw.com](http://www.scalesnw.com) - We build it. We haul it. We install it!

**911 Hay Equip.**

**TamaTwine** for Large Square Bales comes in a range of products designed to maximize your baling performance. Using the most suitable twine according to crop type, conditions, and baler type, allows you to get more length, saves time, resulting in higher output and trouble free baling.

**Call Now For Lowest Pricing of the Year!**

**MAXIMIZE YOUR BALING PERFORMANCE!**

**Tama USA Inc.**  
P.O. Box 506 Dubuque, IA 52004-0506  
Tel: (563) 583-3035 Fax: (563) 583-3531 Toll Free: (800) 225-8946  
E-mail: [info@tama-usa.com](mailto:info@tama-usa.com) Website: [www.tama-usa.com](http://www.tama-usa.com)