

**923 Farm Equipment**

Eversman Disk, 12', \$850. 3 point bush hog scraper, \$850. Massey Ferguson plow, 4 bottom, \$150. Dallas, OR. 503-931-8952

John Deere 1610: 16' chisel plow, \$3900. John Deere 960: 22' Integral field cultivator, \$2900. Montesano, WA. 360-580-5809

**WANTING TO BUY!**  
WANTED: Add-on bottom for a watts hydraulic resettable plow. 503-719-2545

**SAVE 30-40% ON NEW PIVOTS**  
Hydromatic Center Pivots  
•Heavy duty, hot dipped galvanized steel or aluminum.  
•Fixed or movable pivot point.  
•Basic control panel or high tech.  
info@hydromaticcenterpivots.com  
775-217-5570 or 775-217-0438



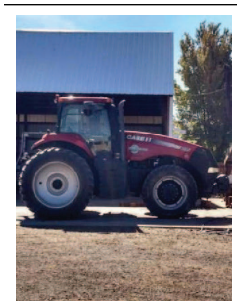
New Massey Ferguson 1366 Disc Mower Conditioner, \$25,785. Ferndale, CA Laurence Hindley 707-786-9541



Unused Work Gloves To Trade. Having lost the use of my left hand, I have many extra large left work gloves to trade with someone in similar situation who has unused extra large right gloves. Wenatchee, WA. 509-630-6882



2014 Case 235 IH Magnum Tractor: Excellent condition, 1600 hours, \$116,000. Fall River Mills, CA. 530-227-3411



**Retiring**  
16' Ring Roller, \$1500. 12' heavy bar harrow, \$1000. Bushhog 12' disc, \$2000. Great Plains 72" drill, brand new, \$8500. John Deere 450C dozer, \$30,000. 5 shank ripper, \$2000. Howard HR36-90, new, rotovator, \$6500. Albany, OR. Leave message 541-619-1160

1998 New Holland TR98 with 971 header, 3549 hours, \$38,500. 1991 New Holland TR96 with 971 header, 3565 hours, \$33,000. 1987 New Holland TR96 with higher hours, \$10,000 OBO. \$38,500. Madras, OR. 541-777-0039

**BOYD'S IMPLEMENT**  
www.boyds-implement.com  
1-877-842-9408  
Tillamook, OR  
Kubota Kuhn-Knight  
NUHN GEHL BALZER  
McCORMICK

- NEW Kubota 126 (108 PTO hp) cab, 4WD, rental return.....
- NEW Kuhn 4052 Horizontal Mixer, 520 cu. ft., high roughage option, SL124 slinger
- NEW Kubota Knight SL124 Slinger.....
- NEW Kubota RA 2584 Rake, 24'11"-27'7".....
- NEW Land Pride 10' pasture cutter, hi-flotation.....\$10,500
- NEW Land Pride 12' pasture cutter, bat wing, hi-flotation.....\$12,000
- NEW Irriland 1100' Traveler, 3.7 hose, Honda.....\$29,000
- Case 995, 65hp, 2WD. \$4,500
- Ford 5000, 64PTO HP, Manual.....\$6,000
- Cat 910 Articulating Loader Tight unit, SN6857.....\$16,500
- Schulte F10 10' Rotary Rotary Cutter.....\$7,500
- Kuhn FC303GC moco, 9'10".....\$13,000
- Kuhn FC4000G moco, 13'.....\$15,000
- Botec 4063 4-auger mixer wagon, 630 cu. ft. Make Offer
- New Holland 3118 Slinger, 16 yd., flotation.....\$7,500
- Balzer 1500 gal. slurry tank, flotation.....\$4,000
- Lely 1600 gal. vacuum tank, flotation.....\$3,500
- Terra Nova C250 8.5' tiller.....\$3,750

**Don't See It? Give Us a Call!**

**923 Farm Equipment**

Like New: Rankin LG Series 3-point sprayer, 55 gallon, plus wand, \$600. Astoria, OR. 503-325-2068

John Deere 4230: cab with powershift. 940 field cultivator. John Deere Model 60 and Model M 111 tandem disc. 601 Ford Workmaster. Clark IT60, 6000 lb fork lift. Vegetable Trailers. KENT, WA. Jason 253-261-8789  
jser316@hotmail.com

**923 Farm Equipment**

Good Condition: 10' hydraulic lift disk, \$5000. Astoria, OR. 503-325-2068

**WANTED**  
WANTED: John Deere double spinner chaff spreader for 9610 combine. 503-719-2545

CAPITAL PRESS CLASSIFIEDS GET RESULTS!

**923 Farm Equipment**

2004 John Deere 630, 30' rigid header with header cart. Good condition, \$13,000. Davenport, WA. 509-725-0392

**WANTED**  
WANTED: Donahue or John Deere implement trailer. 503-719-2545

IF YOU HAVE A BEEF - sell it in next week's Capital Press!

**923 Farm Equipment**

Brilliant Cultipacker/ Pulverizer, excellent condition, one owner, clean, tag along, \$2,750. Chehalis, WA. 360-748-7873

Sunflower 20' Offset Disk: 22" disc, excellent condition, \$6000. Coeur d'Alene, ID. 208-691-6411

Hay Buster H1000: #S11637, 3 screens, conveyor belt, bearings, and knives good, PTO, single axle, \$6500. New Holland 8 forage wagon, \$3500. Wamic, OR. 541-980-8923, rmcattle@hughes.net

**923 Farm Equipment**

21' Brillion X-fold Roller: almost new, \$18,500 OBO. Sheridan, OR. Contact Brian 971-241-0344

Case IH 1688 with 2 heads. Willmar 7200. Hesston 8450 with 14. John Deere 6400, 7210, 7420, 6420, 620F, 995, 9R20". Kello- Bilt 275. Woodburn, OR. 503-454-8047

8870 John Deere Tractor, 4400 hours, excellent condition, very clean, \$55,000. Rickreall, OR. 503-930-1904

**923 Farm Equipment**

•International Cyclo Air 800: 4 row corn planter with dry fertilizer monitor.  
•Allis Chalmers 514 rough terrain forklift.  
•Byron 9600 Cornpicker.  
•International 5088 tractor, dual tires, excellent condition.  
•1987 4' x 102" wide Fruehauf trailer.  
•1977 40 foot Budd trailer.  
•4 dozen waxed corn boxes.  
•36" tall graphic pumpkin bins.  
Spokane, WA. 509-993-2839

**923 Farm Equipment**

Massey Ferguson 4840, excellent condition, only 3700 hours, \$22,500. Rickreall, OR. 503-930-1904  
WANTED: Agri-Weld pull type rug wiper. Shedd, OR. Contact Mike 541-936-0078.  
John Deere 1518 15' batwing folding mower, \$6000 OBO. Mount Vernon, WA. 360-391-3146  
Giant Clearance Sale: Thousands of items available. All Used Equipment. Make offers. Independence, OR. 503-838-3740, 503-383-6722

**TJ EQUIPMENT LLC**  
**WINTER SPECIALS**

 NEW 2016 Cadman 3750XLWB irrigation reel, 3.75" x 1320' hose, 300-400 GPM..... \$41,730...\$38,730	 NEW 2017 Cadman 4000SWB irrigation reel 4.09"x1250' hose, 443-600 GPM..... \$39,000...\$37,000
 2008 Cadman 4000S Wide Body, 4.09"x1250' hose, 443-600 GPM.....\$19,000	 2015 Cadman 4000C irrigation reel 3.75" x 1250' hose, solar panel, Honda motor.....\$26,000
 NEW 2016 Cadman 80MG802C John Deere power unit Caprari pump, up to 700 GPM..... \$25,025...\$22,522	 2013 Cadman 4500SWB, 82 hp John Deere 5030 Tier 3, Caprari MG-80/2C, 4.5"x1175' hose.....\$55,000
 NEW Cadman 1554414T John Deere power unit, Cornell Pump, 400-1300 GPM.....\$44,044...\$39,640	 NEW Cadman 125MC8043A John Deere power unit 125 hp, up to 700 GPM..... \$31,485...\$28,340

**360-815-1597 Lynden, WA**  
**Lots more at: www.TJEquipmentLLC.com**

**\*\* FALL SPECIALS \*\***

**HARVEST RENTAL RETURNS**  
**\*\*Special year End Pricing\*\***

M5-091HDC12	M6-131DTC-F
M5-111HDC24	M6-141DTC-F
M100GXDTG	M7060HD12
M6-101DTC-F	UTILITY VEHICLES
M6-111DTC-F	

**33599 Hwy 99E Tangent, OR 541-926-1811**  
**812 McClaine St Silverton, OR 503-873-5355**

**LB T LINN BENTON TRACTOR**

 #17HR39 - 247 hrs <b>M5-091HDC12</b> Harvest Rental Return	 #16HR01- 596 hrs <b>M6-141DTC-F</b> Harvest Rental Return	 #17HR41 - 638 hrs <b>M6-131DTC-F</b> Harvest Rental Return
--	---	--

<b>KUBOTA</b>	<b>MOWERS &amp; RAKES</b>
#C017257 BX235LSB-R, TLB, 4WD ..... CALL	#C016900 216 NH Twin Hyd Rake..... \$6,500
#C018429 L2501DT, 4WD, NEW..... CALL	#C018159 R2800 28' hyd Rake..... \$33,744
#C016759 M4N-071HDC12, 4WD, CAB..... CALL	#C016798 30EX Flail mower w/ QC, Used..... \$4,995
#C017476 L4701HST, ROPS, 52hrs..... CALL	
#C016541 M5N-111HDC24, 4WD, Narrow CALL	<b>TILLAGE</b>
<b>USED KUBOTA</b>	#C016857 7326DH, 26' disc harrow..... \$54,795
#C017815 BX1850, w/ ldr, 247hrs, Cons...\$9,195	#C011155 AP1548 all purpose seeder, demo. \$5,695
#C018634 B3350SUHSD, w/ldr, 411hrs... \$18,750	#C012794 SD2600 26' short disc, New..... \$67,995
#C017634 F2560, 4WD, 2280hrs, ..... CALL	
#C018485 SVL75, Rops Cab, 72"bkt... \$36,975	
<b>OTHER EQUIPMENT &amp; UTILITY VEHICLES</b>	
#C017789 RTV900G-H, w/cnpy, 1752hrs... \$7,295	
#C017788 RTV900G-H, w/cnpy, 2810hrs... \$7,295	
#C012635 Hustler Super Z, 72"deck..... \$14,349	
#C014253 Hustler Raptor SD, 42" deck... \$3,799	
#C013572 Hustler Fastrack SDX, 48" deck \$7,499	

**EQUIPMENT SALES STAFF:**  
Joe McDonald 541-905-6252  
George King 541-905-4699  
Scott Nelson 541-220-8755  
Mike Spowehn 541-905-4060  
Eric Stritzke 541-220-1485  
Brody Tucker 541-905-4006

MacDon KRONE Fendt 2-Rite FLORY Vermeer Great Plains Kubota



**2017/18 INSPECTION PROGRAM:**

**\$350 walkaround inspection includes:**

- Written report detailing our inspection findings
- Formal quote to repair all needed repairs
- Inspection fee is waived upon completion of all recommended repairs

**\$475 full inspection includes:**

- All items in the walkaround inspection (\$350)
- Oil samples from each component, up to 8 samples (\$125)
- Inspection fee is waived upon completion of all recommended repairs

*In order to qualify for discounts and waived inspection fee, the repairs must be scheduled and all recommended (quoted) repairs completed by 3/31/18 to receive the 10% discount on parts and labor.*

**Peterson is your source for Fendt, Hesston, Challenger, Massey Ferguson, & AGCO Parts!**

**FENDT Challenger AGCO PARTS MASSEY FERGUSON HESSTON by MASSEY FERGUSON SUNFLOWER RoGator TerraGator**

**See our full used inventory online at [petersonag.com](http://petersonag.com)**

**YOUR AUTHORIZED DEALER IN NORTHERN CALIFORNIA, OREGON & SW WASHINGTON**

**Need a machine? Call Justin Stockton at 541-953-6619 or email [leads@petersoncat.com](mailto:leads@petersoncat.com)**

**PETERSON CAT**