

899 Heavy & Indust. Eq.



125E Dresser Dozer: 4-in-1 loader bucket, sweeps, rock guards. Runs strong. Stops/starts/steers. Very dependable, \$14,500. Prineville, OR. Mike 541-480-1722

Dresser TD-40 Dozer: single shank ripper, semi-U blade, \$55,000. Paisley, OR. O'Leary Equipment. 541-943-3318. Leave a message.

CAT 623-B: Self-loading scraper, good condition, \$39,500. D-6 H U-dozer with tilt and ripper, near new engine and hydraulic pump, \$86,500. Salem, OR. 503-362-3055

There Are Always Great Deals In Capital Press Classifieds. Call Now And Add Yours! 1-800-882-6789

899 Heavy & Indust. Eq.



T600 Allis Chamers loader, backhoe, tractor: runs great, everything works, asking \$5000. Gaston, OR. 503-351-8454



350 Diesel Case Dozer: 6 way blade, starts, steers and stops good. Runs strong, dependable, \$14,500. Salem, OR. Call Paul 503-999-5215

D7F: 80% under carriage, tilt blade, Hyster Hi Arch drum, fresh rebuilt motor, \$24,999. Independence, OR. 503-917-1229

899 Heavy & Indust. Eq.

Komatsu 120 excavator. Come, look and offer. Longview, WA. 360-636-4866

TD7E: 6 way blade, ripper, new rollers, runs good, \$14,500. Gaston, OR. 503-662-5401

621 CAT SCRAPER Updated with 3306 Cat Engine, 2517 hours, good rubber, good condition, \$24,000. Wamic, OR. Call 541-980-8923 or rmcattle@hughes.net

CASE INDUSTRIAL PARTS We sell genuine, after market, and used CASE parts at discount prices nationwide. Call For Free Catalog.

CENTRAL EQUIPMENT AFTER MARKET & USED PARTS Medford, OR (888) 593-8749

Quality Used EQUIPMENT & ATTACHMENTS • INDUSTRIAL • COMMERCIAL Please visit our Website www.amtractor.com for a complete list of Machines and Attachments

American Tractor Our Toll Free # 888-499-8980 Call Cameron Noble or Eric Hunt CENTRAL POINT, OR

Wilson Equipment Rental & Sales 2012 Deere 650KXLT Erops A/C and heated cab, 6-way blade, rear ripper, good U/C, 3,000 hrs. \$87,500

2008 Deere 750JLT Erops A/C and heated cab, 6-way blade, Free Spool Allied H60 Winch, rock guards, sweeps and screen, 5,000 hrs, nice well maintained machine. \$94,500

2008 Cat 420E Erops, A/C and heated cab, 4x4, 4 in 1 bucket, E-stick, aux hyd, coupler, 3,200 hrs. \$56,500

2013 Cat 312EL Enclosed Cab, Air Conditioner, Heater, hyd thumb, coupler, 9' 8" Stick, Auxiliary Hydraulic Plumbing, Rear View Camera, Straight Line Travel Pedal, Control Pattern Changer, 4,700 hrs, good U/C. \$82,500

2010 Cat 950H A/C and heated cab, hyd coupler, GP bucket, good tires, nice machine. \$92,500

1 of 3 Ex-Government 2005-2006 New Holland TV 145 145 HP, A/C and heated cab, heavy duty joy stick controlled US mowers flail brush cutter, 4x4, articulating, good tires, well maintained. CALL

Financing Available Trades Accepted Randy 541-830-3966 Cell# 541-944-5067 White City, OR www.wilsonequipment.net

**NEW & USED OLIVER & CLETRAC Crawler Parts Our Specialty**  
ZIMMERMAN OLIVER-CLETRAC  
1450 Diamond Station Rd. • Ephrata, PA 17522  
**717-738-2573**  
Fax 717-733-3529  
www.olivercletrac.com

**Nyssa Tractor & Implement**  
Our yard has 5 miles of road, the rest is Farm Machinery & Parts.  
www.nyssatractor.com  
Toll Free (888) 372-4020  
Nyssa, OR

**BIG TRACTOR PARTS, INC.**  
~ GEARED FOR THE FUTURE ~  
**STEIGER TRACTOR SPECIALIST**  
1. We are your source for new & used Steiger drivetrain parts Series 1 - 9300 Series.  
2. We rebuild Spicer manual transmissions, Fugi power shift transmissions, dropboxes & axle with ONE YEAR WARRANTY!  
3. We now rebuild computer control boxes for Steiger tractors 1982-1999.  
**800-982-1769**  
www.bigtractorparts.com

**NEW, USED, AND REMAN PARTS**  
TOLL FREE: 1-877-928-1646  
FARMLAND • 32427 OLD HWY 34, TANGENT, OR 97389

Reman Engines for Case/IH, John Deere, and Ford

Seats w/Air Suspension \$1,025  
Combine Parts  
JD 4010, 4020 Clutch Kits \$715  
A/C Components

**SALVAGED TRACTORS**

Farmland Tractor Supply  
Parts@Farmlandtractor.com

902 Farm Equip. Parts

Starters, alternators, and generators. Call 503-364-3650 or visit Walz's Rebuilt - 348 Market St. NE., Salem, OR.

905 Antique Farm Eq. & Parts

1942 Johnny Popper: newly rebuilt engine, new paint, fun and parade ready! Price reduced \$3200. Woodland, WA. Call 360-225-3525

John Deere model 40 crawler: with blade, runs good, \$4500. Also Massey Ferguson 41 rear mount sickle bar mower, great shape, \$2000. Cathlamet, WA. 360-431-6488

1949 Ford 8N Tractor, recent restoration, comes with plow, disc, 3 point boom, 3 point box, \$4000. Newberg, OR. Call for details 503-538-3825

907 Nursery Equip. & Supplies

USED NURSERY CONTAINERS: Used, but reusable nursery containers. All sizes. Inventory changes daily. Call for current availability and prices. Sawyer Farms, Scio OR. 503-769-3417, juddsfarm@wvi.com (also, wanted used containers)



MAYER POTTING MACHINE: Excellent working condition. This sturdy machine greatly speeds the potting of nursery stock. 3 phase power, \$6,500. Molalla, OR. 503-651-3737

REARS NIFTY SPRAYER: 25 gallon. Recently refurbished with new Briggs & Stratton gas motor, 100' hose and new nozzle. Easy to use and maneuver, \$995. Molalla, OR. 503-502-6925

**A picture says a 1,000 words**

Add a full color photo to your print and online ad today by calling **800-882-6789**  
Capital Press  
capitalpress.com

907 Nursery Equip. & Supplies

FRESH SAWDUST: Consistently fair pricing. Forest-Grove, OR. For pricing call 503-849-0216



STEAM GENERATOR: Sebring Model SG-10. Little used and in excellent condition with air-blower steam aerator. Use to disinfect greenhouses, benches, nursery pots and more. Fuel oil powered, industrial duty, \$4950. Molalla, OR. 503-502-6925

PLUG DISLODGER: Antal Cayson Plug Popper, heavy duty, specialized tool for quickly and easily dislodging plants in plug trays. Little used and in like new condition, \$595 Molalla, OR. 503-502-6925



(2) Used Nursery Conveyors, 60'. Possible dual fuel Honda engines, \$1500 Cornelius, OR. (503)849-0216

911 Hay Equip.

#1 Balewagons: Buy, Sell, New Holland 2&3 wide self-propelled, pull-type models, parts, tires, manuals. Caldwell, ID. 208-880-2889  
www.balewagon.com



2015 New Holland Speedrower 260, DB416 head, 201 hours, \$99,000. BRIM TRACTOR, Salem, OR. 800-530-2746

Wanted: field hay chopper or bale chopper. 509-773-5598

Case IH8840 Swather: 1450 hours, 12' specialty crop header, UHMW lined \$12,000. Banks, OR. 503-314-8484

2007 Krone Baler BP1290HDP, 3x4, 31,000 bales. Good condition, \$32,000. Davenport, WA. 509-725-0392

1998 Westward (MacDon) 9300 Swather: 16' Model 922 auger header and conditioner, 2950 hours. Good condition, \$13,000. Davenport, WA. 509-725-0392

911 Hay Equip.

1075 New Holland Bale Wagon: diesel, block stack, great condition. Philomath, OR. 541-609-8689. Evenings 541-929-2196



2013 New Holland Big Baler 340S: tandem axle, chamber extension, 3614 bales, \$59,000. BRIM TRACTOR, Salem, OR. 800-530-2746



Hustler Bale Feeder CHX5000: Demo- unit, trailed, hydraulic, 5' wide table, big square or round bales. List \$18,750. Special price, \$15,750. Yakima Imple-ment 1-800-572-2239 yakimple@qwestoffice.net



3 used Orkel Silage Balers: Model# 1202. New flails, 1 for parts \$5000.00 for all 3, or best offer. Call Laurence Hindley, The Farm Shop, Ferndale, CA. 707-786-9541

New And Used Parts: for all models New Holland bale wagons. Largest Inventory in North America. Sod Busters Sales, Polson, MT. 877-735-2108 or 406-883-2118

Large Supply of Rebuilt New Holland Bale Wagons: Also buying New Holland bale wagons. Sod Busters Sales, Polson, MT. 406-883-2118



2015 New Holland 316 Mower, flail conditioner, Demo, \$29,000. BRIM TRACTOR, Lynden, WA. 800-530-2746



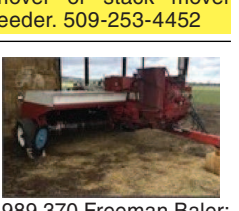
Robbco Fodder Flaker Feeder: 2017, feeds 7 bales, excellent condition, \$20,000. Prineville, OR. 541-771-0586



2012 Fella Rake, 29.5' swath, excellent shape, \$16,000. BRIM TRACTOR, Lynden, WA. 800-530-2746

New Holland 1065 Harrow Bed: new trans and clutch, works good, \$9,000. Loyalton, CA. 530-993-1199

Freeman 330 Hydraulic Baler: 16x23, good working condition, \$6500. Loyalton, CA. 530-993-1199



WANTED: Hesston 60A or John Deere Stack mover or stack mover feeder. 509-253-4452



1989 370 Freeman Baler: Good condition, \$12,000. Fall River Mills, CA. 530-227-3411

**AN AG ESSENTIAL**  
Capital Press  
The West's Ag Weekly

Our Mission: to provide the Ag Community with timely, thorough news plus advertising that enriches our reader's pocketbooks and lives.

Now more ESSENTIAL than ever!

Twitter  
Facebook  
YouTube

CapitalPress.com  
OnlyAG.com  
OnlyAGNOW.com  
Farmseller.com  
Blogiculture.com  
back4d.com  
AgDirectoryWest.com

Miss a week... Miss a GREAT DEAL!

**THANKSGIVING Advertising Deadlines**

Because of Thanksgiving holiday, our ad deadlines for the November 24<sup>th</sup>, 2017 issue must move ahead to:

News Display & Legals  
**DEADLINE FRI., NOV. 17<sup>th</sup> @ Noon**

Classified Display Ads  
**DEADLINE TUES., NOV. 21<sup>st</sup> @ 10AM**

Classified Line Ads  
**DEADLINE TUES., NOV. 21<sup>st</sup> @ Noon**

Capital Press  
The West's Ag Weekly  
1-800-882-6789 • CapitalPress.com

**GK MACHINE INC.**  
COMBINING TECHNOLOGY & TRADITION SINCE 1976  
Your local parts experts for more than 40 years!

SEE GK MACHINE AT THE WILLAMETTE VALLEY AG EXPO BOOTH #67

**IN-STOCK SPRAYING AND HYDRAULIC ACCESSORIES**  
Cylinders • Controllers • Filters • Fittings • Hoses  
Motors • Pumps • Seals • Spray Tips • Valves

GK MACHINE CARRIES THE BRAND NAMES YOU CAN TRUST  
BANJO, RAVEN INDUSTRIES, OXBO, HYPRO, BOSCH, TeeJet TECHNOLOGIES

**877-678-5525 • www.gkmachine.com**  
10590 Donald Road NE • Donald, Oregon 97020

\$3,626.00 frame

**30x96 Semi Gable 5' On Center**  
Bows 2-3/8" 13 Ga. • 4' side walls, 13'6" high at center  
48 x 100 6 mil 4 yr. Poly.....\$438.00  
24 pcs Wire Lock.....\$300.96  
2 - 96' Roll-ups.....\$549.00  
16 pcs Wire Lock for top board.....\$200.64

ALSO OFFERING  
• Poly  
• Exhaust Fans  
• Ground Cover  
• Poly Carbonate  
• Wire Lock  
• Roll-ups  
• Shade Cloth  
• Heating  
• Bench Tops

\$2,374.00 frame

**20x96 Quonset 5' On Center**  
Bows 1-7/8" 13 Ga. • 4' side walls, 8'6" high at center  
32 x 100 6 mil 4 yr. Poly.....\$293.00  
22 pcs Wire Lock.....\$275.88  
2 - 96' Roll-ups.....\$549.00  
16 pcs Wire Lock for top board.....\$200.64

Specializing in Heavy Duty Greenhouse Frames Code and Non-Code

503-678-2700 • 800-347-2701 (Outside OR)  
www.ovg.com • ivans@ovg.com • FAX: 503-678-2700  
20357 Hwy. 99E • Aurora, OR 97002  
Prices good thru 11/30/17. MUST MENTION THIS AD FOR THIS PRICING.