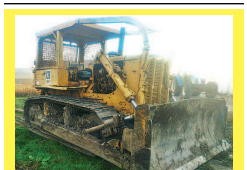


899 Heavy & Indust. Eq.
Komatsu 120 excavator. Come, look and offer. Longview, WA. 360-636-4866

CAT 623-B: Self-loading scraper, good condition, \$39,500. **D-6 H U-dozer** with tilt and ripper, near new engine and hydraulic pump, \$86,500. Salem, OR. 503-362-3055



D7F: 80% under carriage, tilt blade, Hyster Hi Arch drum, fresh rebuilt motor, \$24,999. Independence, OR. 503-917-1229

TD7E: 6 way blade, ripper, new rollers, runs good, \$14,500. Gaston, OR. 503-662-5401

CASE INDUSTRIAL PARTS
We sell genuine, after market, and used CASE parts at discount prices nationwide. Call For Free Catalog.
CENTRAL EQUIPMENT
AFTER MARKET & USED PARTS
Medford, OR
(888) 593-8749

NOW RENTING!
CAT-D8T SU
w/3-shank mounted ripper
ATIMACHINERY.com
888-461-0625
Five Points, CA 44-31102

DON PEILA
TRACTOR REPAIR • PARTS
specializing in
JOHN DEERE INDUSTRIAL EQUIPMENT
Good Used, Reconditioned & After-Market Parts
Peilattractorrepair-parts.com
1-877-423-9746
(541) 772-1801
Central Point, OR 44-31102

SATELLITE PARTS LOCATING SYSTEM

902 Farm Equip. Parts
Starters, alternators, and generators. Call 503-364-3650 or visit Walz's Rebuilt - 348 Market St. NE., Salem, OR.

905 Antique Farm Eq. & Parts
1957 Super 55 Oliver Tractor, completely restored with new rubber all around, \$5,000. Lynden, WA. 360-815-2883

1942 Johnny Popper: newly rebuilt engine, new paint, fun and parade ready! Price reduced \$3200. Woodland, WA. Call 360-225-3525

John Deere model 40 crawler: with blade, runs good, \$4500. Also **Massey Ferguson 41** rear mount sickle bar mower, great shape, \$2000. Cathlamet, WA. 360-431-6488

907 Nursery Equip. & Supplies

Don't Miss This One!

Shade House Kit: Nearly new, great condition. 225 complete arches 21'W x 11'H covers approximately 1 acre set at 10' bays, \$15,000. Modesto, CA. 775-737-4211

USED NURSERY CONTAINERS:
Used, but reusable nursery containers. All sizes. Inventory changes daily. Call for current availability and prices. Sawyer Farms, Scio OR. 503-769-3417, juddsfarm@vwi.com (also, wanted used containers)



MAYER POTTING MACHINE: Excellent working condition. This sturdy machine greatly speeds the potting of nursery stock. 3 phase power, \$6,500. Molalla, OR. 503-651-3737

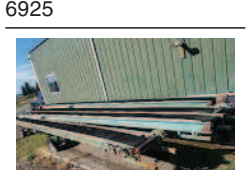
907 Nursery Equip. & Supplies
FRESH SAWDUST: Consistently fair pricing. Forest-Grove, OR. For pricing call 503-849-0216



STEAM GENERATOR: Sebring Model SG-10. Little used and in excellent condition with air-blower steam aerator. Use to disinfect greenhouses, benches, nursery pots and more. Fuel oil powered, industrial duty, \$4950. Molalla, OR. 503-502-6925

REARS NIFTY SPRAYER: 25 gallon. Recently refurbished with new Briggs & Stratton gas motor, 100' hose and new nozzle. Easy to use and maneuver, \$995. Molalla, OR. 503-502-6925

PLUG DISLODGER: Antal Cayson Plug Popper, heavy duty, specialized tool for quickly and easily dislodging plants in plug trays. Little used and in like new condition, \$595. Molalla, OR. 503-502-6925



(2) Used Nursery Conveyors, 60'. Possible dual fuel Honda engines, \$1500. Cornelius, OR. (503)849-0216



911 Hay Equip.

Freeman 5000: Big Bale stackwagon. Reconditioned, Allis Chalmers diesel engine, Allison automatic transmission, \$25,000. Sublimity, OR. 503-769-6681

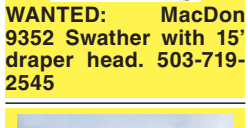


Kuhn FC353 Hydra swing mower conditioner, field ready, \$15,500 price negotiable. Oakville, WA. 360-507-6810

New And Used Parts: for all models New Holland bale wagons. **Largest Inventory in North America.** Sod Busters Sales, Polson, MT. 877-735-2108 or 406-883-2118

Large Supply of Rebuilt New Holland Bale Wagons: Also buying New Holland bale wagons. Sod Busters Sales, Polson, MT. 406-883-2118

WANTED: MacDon 9352 Swather with 15' draper head. 503-719-2545



2012 Fella Rake, 29.5' swath, excellent shape, \$16,000. BRIM TRACTOR, Lynden, WA. 800-530-2746



2015 New Holland 316 Mower, flail conditioner, Demo, \$29,000. BRIM TRACTOR, Lynden, WA. 800-530-2746



2015 New Holland Speedrower 260, DB416 head, 201 hours, \$99,000. BRIM TRACTOR, Salem, OR. 800-530-2746



2015 New Holland Speedrower 260, DB416 head, 201 hours, \$99,000. BRIM TRACTOR, Salem, OR. 800-530-2746



2015 New Holland Speedrower 260, DB416 head, 201 hours, \$99,000. BRIM TRACTOR, Salem, OR. 800-530-2746



2015 New Holland Speedrower 260, DB416 head, 201 hours, \$99,000. BRIM TRACTOR, Salem, OR. 800-530-2746

Farmland Tractor Supply
Parts @Farmlandtractor.com

911 Hay Equip.
#1 Balewagons: Buy, Sell, New Holland 2&3 wide self-propelled, pull-type models, parts, tires, manuals. Caldwell, ID. 208-880-2889 www.balewagon.com

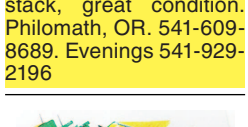
Wanted: field hay chopper or bale chopper. 509-773-5598

Case IH8840 Swather: 1450 hours, 12' specialty crop header, UHMW lined \$12,000. Banks, OR. 503-314-8484

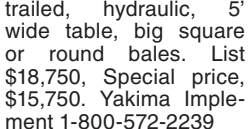
2007 Krone Baler BP1290HDP, 3x4, 31,000 bales. Good condition, \$32,000. Davenport, WA. 509-725-0392

1998 Westward (MacDon) 9300 Swather: 16' Model 922 auger header and conditioner, 2950 hours. Good condition, \$13,000. Davenport, WA. 509-725-0392

1075 New Holland Bale Wagon: diesel, block stack, great condition. Philomath, OR. 541-609-8689. Evenings 541-929-2196



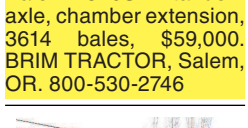
Hustler Bale Feeder CHX5000: Demo-unit, trailed, hydraulic, 5' wide table, big square or round bales. List \$18,750, Special price, \$15,750. Yakima Implement-1-800-572-2239 yakimple@qwestoffice.net



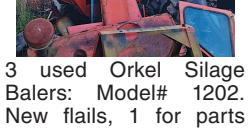
2013 New Holland Big Baler 340S: tandem axle, chamber extension, 3614 bales, \$59,000. BRIM TRACTOR, Salem, OR. 800-530-2746



3 used Orkel Silage Balers: Model# 1202. New flails, 1 for parts \$5000.00 for all 3, or best offer. Call Laurence Hindley, The Farm Shop, Ferndale, CA. 707-786-9541



1989 370 Freeman Baler: Good condition, \$12,000. Fall River Mills, CA. 530-227-3411



John Deere 8220: new engine, new tires, excellent shape, runs great, 10,000 hours, \$68,000 OBO. Sheridan, OR. 503-434-7692



John Deere 4240: 8000 hours, runs and works great, \$16,500 OBO. Sheridan, OR. 503-434-7692



John Deere 7700 Tractor: new engine, weak transmission, new front tires, duals, \$28,000 OBO. Sheridan, OR. 503-434-7692



John Deere 8400: 7500 hours, 200 hours on new transmission, \$65,000 OBO. Sheridan, OR. Brian 971-241-0344



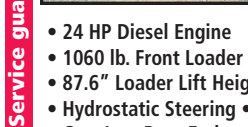
1997 Massey Ferguson 285: with loader. SN#9A254045, 81hp, Perkins DSL, 6909 hours, 12-4 transmission, MF245 loader, \$8500 OBO. Glenoma, WA. 360-498-5165



Cleanest John Deere 4020 in southern Idaho. Ezee on loader with bucket and pallet forks. Must see! \$20,000 OBO. Buhl, ID. 208-539-3344



Case IH 4494 Tractor with 7000 hours: 200 hp, 4 new inside tires, PTO and 3-Point hitch. Everything works, no leaks, good condition, \$21,000. Pictures available. Middleton, ID. 208-477-8019



Used John Deere 2240 Tractor: \$5,500 OBO. Call Laurence Hindley, THE FARM SHOP, Ferndale, CA. 707-786-9541

Good Condition: 424 International 3-point with loader. A must for every day farm/ranch chores. Good tires, positraction, diesel, \$6500. Astoria, OR. 503-325-2068

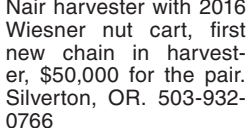


917 Orchard/Vineyard Equip.
Tallman Aluminum Picking Ladders: 10', \$80; 12', \$100. Also two ladder trailers, \$500/each. Gervais, OR. 503-991-1515

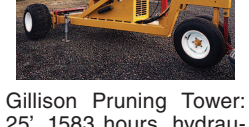
Orchard Ladders: Aluminum, (1) 14', and (2) 16'. Buckets. Newberg, OR. 503-538-2688



2008 836 Weiss Mc-Nair harvester with 2016 Wiesner nut cart, first new chain in harvest, \$50,000 for the pair. Silverton, OR. 503-932-0766



Gillison Pruning Tower: 25', 1583 hours, hydraulic adjusting axles, heated bucket, excellent condition, \$27,500. St. Paul, OR. 503-932-2371



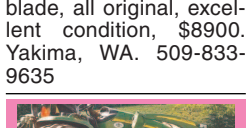
IF YOU HAVE A BEEF - sell it in next week's Capital Press!

Looking for ORCHARD/VINEYARD PROPERTY?
Go to Class. 570

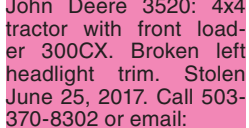
Capital Press
The West's Weekly
www.capitalpress.com
1540-1-52-4/13

920 Tractors

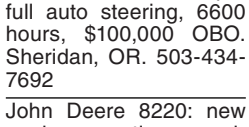
Lindeman crawler with blade, all original, excellent condition, \$8900. Yakima, WA. 509-833-9635



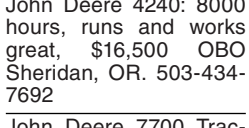
2011 Case IH Farmall 105U Tractor: 60" bucket with forks, 3400 hours, 3 remotes, PTO, L730 self leveling loader, 90% Michelin tires, 4WD and 105 HP, \$42,500. Brooks, OR. 503-580-4261



John Deere 8520: ILS front end, tires 80%, tractor in excellent shape, full auto steering, 6600 hours, \$100,000 OBO. Sheridan, OR. 503-434-7692



1977 Massey Ferguson 285: with loader. SN#9A254045, 81hp, Perkins DSL, 6909 hours, 12-4 transmission, MF245 loader, \$8500 OBO. Glenoma, WA. 360-498-5165



Cleanest John Deere 4020 in southern Idaho. Ezee on loader with bucket and pallet forks. Must see! \$20,000 OBO. Buhl, ID. 208-539-3344



Case IH 4494 Tractor with 7000 hours: 200 hp, 4 new inside tires, PTO and 3-Point hitch. Everything works, no leaks, good condition, \$21,000. Pictures available. Middleton, ID. 208-477-8019



Used John Deere 2240 Tractor: \$5,500 OBO. Call Laurence Hindley, THE FARM SHOP, Ferndale, CA. 707-786-9541

Good Condition: 424 International 3-point with loader. A must for every day farm/ranch chores. Good tires, positraction, diesel, \$6500. Astoria, OR. 503-325-2068

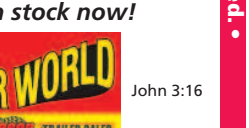


923 Farm Equipment

Kubota Tractor B6100: 4x4, diesel, has front weights, comes with rear dirt scraper. Good size for suburban farmer or small acreage, \$2850. Rainier, OR. 503-556-1303, 503-442-2143



2014 Case 235 IH Magnum Tractor: Excellent condition, 1600 hours, \$116,000. Fall River Mills, CA. 530-227-3411



2014 Case 235 IH Magnum Tractor: Excellent condition, 1600 hours, \$116,000. Fall River Mills, CA. 530-227-3411

920 Tractors
#1 Massey Ferguson Tractors: Oregon City, OR. 503-631-3411

John Deere 4200: 27 HP, 4WD, diesel with 420 loader and box scraper, manual, 9 speed with 780 hours. Great for working in paddocks and light arena work, \$10,000. Port Townsend, WA. 509-768-4789

Kubota L2500: front loader LB400, backhoe, 2 buckets, 385 hours, \$16,000. Roseburg, OR. 541-672-8137 evenings



4x4 Japanese Mini Tractors starting at \$4995. Rototillers available for \$750. Portland, OR. 503-805-2684 oregondieselimports.com

Attention: Wanted Kubota or John Deere, 4x4 compact tractor with loader/equipment. Carlton, OR. 503-550-0094

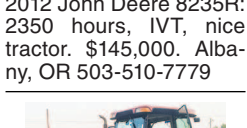
T600 Allis Chalmers loader, backhoe, tractor: runs great, everything works, asking \$5000. Gaston, OR. 503-351-8454



International 1586: Excellent condition. air, 3 remotes, duals, very strong runner, \$13,000. Bishop, CA. 760-937-0764

1980 Case 4890, 20.8x34 singles, PTO 9234 hours. Good condition, \$6,500. Davenport, WA. 509-725-0392

2012 John Deere 8235R: 2350 hours, IVT, nice tractor. \$145,000. Albany, OR 503-510-7779

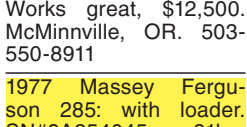


2011 Case IH Farmall 105U Tractor: 60" bucket with forks, 3400 hours, 3 remotes, PTO, L730 self leveling loader, 90% Michelin tires, 4WD and 105 HP, \$42,500. Brooks, OR. 503-580-4261



John Deere 8400: 7500 hours, 200 hours on new transmission, \$65,000 OBO. Sheridan, OR. Brian 971-241-0344

1998 New Holland 7610 Tractor: with 7210 loader. Works great, \$12,500. McMinnville, OR. 503-550-8911



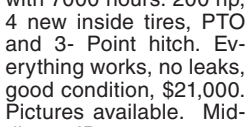
1977 Massey Ferguson 285: with loader. SN#9A254045, 81hp, Perkins DSL, 6909 hours, 12-4 transmission, MF245 loader, \$8500 OBO. Glenoma, WA. 360-498-5165



Cleanest John Deere 4020 in southern Idaho. Ezee on loader with bucket and pallet forks. Must see! \$20,000 OBO. Buhl, ID. 208-539-3344



Case IH 4494 Tractor with 7000 hours: 200 hp, 4 new inside tires, PTO and 3-Point hitch. Everything works, no leaks, good condition, \$21,000. Pictures available. Middleton, ID. 208-477-8019



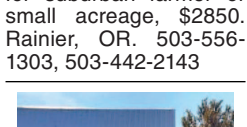
Used John Deere 2240 Tractor: \$5,500 OBO. Call Laurence Hindley, THE FARM SHOP, Ferndale, CA. 707-786-9541

Good Condition: 424 International 3-point with loader. A must for every day farm/ranch chores. Good tires, positraction, diesel, \$6500. Astoria, OR. 503-325-2068



923 Farm Equipment

Kubota Tractor B6100: 4x4, diesel, has front weights, comes with rear dirt scraper. Good size for suburban farmer or small acreage, \$2850. Rainier, OR. 503-556-1303, 503-442-2143



2014 Case 235 IH Magnum Tractor: Excellent condition, 1600 hours, \$116,000. Fall River Mills, CA. 530-227-3411



2014 Case 235 IH Magnum Tractor: Excellent condition, 1600 hours, \$116,000. Fall River Mills, CA. 530-227-3411

923 Farm Equipment
WANTED TO BUY!
WANTED: Add-on bottom for a watts hydraulic resettable plow. 503-719-2545

John Deere 9600 Combine, spike tooth, with belt pickup, chopper, and spreader. Well maintained \$28,500. Harrisburg, OR. 541-520-2976



WANTED: John Deere double spinner chaff spreader for 9610 combine. 503-719-2545

WANTED: Donahue or John Deere implement trailer. 503-719-2545

GET 'EM AT FARMLAND NOW!

JD 5320 N Tractor, 2WD, ROPS, sync. rev., 7700hrs \$11,000
JD 4310 Tractor, w/loader, hydrostatic transmission, R-4 tires, nice condition.....\$14,500
JD 6100D Tractor, 4wd, open ROPS,w/673 ldr.....\$29,000
16" Miller disc, fold-up, ready to use, Moses Lake, WA.....\$8,500
12' Brown Bear Compost Turner, 3pt PTO driven. Excellent condition.....\$15,000 \$12,000
JD 740 Loader.....\$6,000
Freeman 370T Baler, field ready.....\$12,500

Farmland Tractor Supply
Tangent, Oregon
877-928-1646
541-928-1646
32427 Old Hwy. 34
Tangent, OR 97389

Containers For Sale
• 20' and 40'
REFRIGERATED CONTAINERS AVAILABLE



Portland Container
9449 N. BURGARD WY., PORTLAND OR 97203
In Portland, call Mike at (503) 546-2914
Outside Portland: 1-800-788-5159
pcrcanman@msn.com

MERIDIAN EQUIPMENT
Serving the Pacific Northwest Since 1973

