

219 ATVs/Motorcycles



Make a **BIG SPLASH** with a small investment in Capital Press advertising.

1-800-882-6789
FAX (503) 370-4383
www.capitalpress.com

222 Truck/ Auto Parts & Accessories

222 Truck/ Auto Parts & Accessories

222 Truck/ Auto Parts & Accessories

FLATBEDS

Pro-Line all steel flatbeds are complete, installed, wired and ready to work!

- Powder coated • Colors available
- Mud flaps • Treated T&G wood deck
- Backup, clearance & work lights
- Trailer plug
- Gooseneck access with cover
- Stop & turn lights on cab guard

Also check out our Stockmans Flatbed! All steel, wired, ready to work. You install.

Call Today
Dean 541-419-4170
Shop 541-447-4555
www.prolinefab.com

PRO-LINE FABRICATION
1440 SW Tom McCall Road • Prineville, OR

Pro-Line can meet your custom fabrication needs!

Capital Press Classifieds Capital Press Classifieds Capital Press Classifieds

1-800-882-6789
Fax (503) 370-4383 www.capitalpress.com

IF YOU HAVE A BEEF - sell it in next week's Capital Press!

2017 TRX250TM RECON

• BIG RACKS • 5-SPD MANUAL SHIFT
• 12 MONTH WARRANTY
MSRP \$4,099

SALE \$3,799



TAYLOR honda sports
Serving Farms & Ranches for 53 Years - 1964-2017
YOUR AUTHORIZED FULL SERVICE DEALER

TONS OF ACCESSORIES • EASY FINANCING
• FULL SERVICE DEALERSHIP • COMPLETE LINE OF HONDA ATVS

2140 N. Pacific Hwy. 99E • Woodburn, OR • Open 8-6 Tues-Sat.
(503) 981-1813 • 800-981-1813 • www.taylormotorcycles.com

honda.com UTILITY ATVs ARE RECOMMENDED ONLY FOR RIDERS 16 YEARS OF AGE AND OLDER. ATVs CAN BE HAZARDOUS TO OPERATE. FOR YOUR SAFETY, BE RESPONSIBLE. READ THE OWNER'S MANUAL. ALWAYS WEAR A HELMET, EYE PROTECTION AND PROTECTIVE CLOTHING. BE CAREFUL ON DIFFICULT TERRAIN. ALL ATV RIDERS SHOULD TAKE A TRAINING COURSE (FREE FOR NEW BUYERS. ASK YOUR DEALER OR CALL ASI AT 800-887-2887). NEVER RIDE UNDER THE INFLUENCE OF DRUGS OR ALCOHOL. ON PAVED SURFACES, ON PUBLIC ROADS, WITH PASSENGERS, OR AT EXCESSIVE SPEEDS. NO STUNT RIDING. RESPECT THE ENVIRONMENT WHEN RIDING. Recon® is a registered trademark of Honda Motor Co., Ltd. (12/17) *M.S.R.P. does not include \$330 in destination charges. Visit powersports.honda.com to view applicable destination charge amount. 44-4/17

DON'T FORGET TO RENEW YOUR SUBSCRIPTION!

Call from anywhere in the U.S.
1-800-882-6789 OR FAX (503)370-4383
www.capitalpress.com

Don't Miss Another Issue of Capital Press!



Each week you get:

- News and information to stay knowledgeable
- Ads for equipment at great prices to keep expenses low
- Innovations and trends to keep abreast of the market

And, we understand the traditions and heritage of farming.

Capital Press
The West's Ag Weekly

SUBSCRIBE NOW!

Get the West's Ag News Delivered to Your Door

Call 1-800-882-6789
www.capitalpress.com

___ 1 yr. \$49.99
___ 2 yrs. \$89.99
___ 1 yr. internet only \$49.99

___ VISA
___ MasterCard
___ Check

* Outside US, call for quote.

Name _____
Address _____
City _____ State _____ Zip _____
Phone () _____
Card # _____ Exp. _____ Signature _____

Capital Press Mail to: Capital Press, P.O. Box 2048, Salem, OR 97308
The West's Ag Weekly 1-800-882-6789 • www.capitalpress.com

219 ATVs/Motorcycles

222 Truck/ Auto Parts & Accessories

316 Trailers Misc.

316 Trailers Misc.

2013 Honda Side x Side: Big Red, 4x4, tilt bed, \$7000. Walla-Walla, WA. 509-529-7635

IF YOU HAVE A BEEF - sell it in next week's Capital Press!

2009 Volvo Truck: for parts, sleeper, good body parts, 13 speed transmission, Volvo engine. Make offer! Klamath Falls, OR. 541-285-7396

(3) Trinity Belt Trailers: 42'. (1) 2013, (1) 2015 and (1) 2016 spread axle. For more information and prices call Richard. Lakeview, OR. 541-285-7396

20 Ton Eager Beaver flatbed trailer. Come, look and offer. Longview, WA. 360-636-4866



(2) Reefer Trailers: 1992 Great Danes, \$7,500 each. Great shape! Aluminum wheels, brakes 90%. Parkdale, OR. 541-308-6026, Steve.

VERSATILE TRAILERS by FABFORM
• Dump
• Flatbed
• Horse
• Utility
W.W. Western & Trailer
Prineville, OR • 541-447-6890
www.westernwear@gmail.com

Capital Press
The West's Ag Weekly

twitter.com/capitalpress

BEST SELLERS "...Had great results and will definitely use Capital Press again."
Len St. Claire,
Horseshoe Loop, Lebanon, OR
Call 1-800-882-6789 to advertise.

DAMPER DOCTOR
Tractor Harmonic Balancer Rebuilding
530-246-2984
www.damperdoctor.com
REDDING, CA 44-3/100

228 Tires & Wheels
(6) Goodyear 480/80R-38 Diamond Tread Tires: very good condition, \$5500. Dayton, WA. 509-520-2728

8 aluminum hub pilot wheels, 11.0x22.5, previously polished for outside rear. 2 Alcoa Aluminum wheels for steer axle, ran less than 2 years. All \$200 each. Cle Elum, WA. 509-607-3599

301 RVs & Travel Trailers

1993 Nomad 29': stored inside, everything works, newer refrigerator, cleaned carpets, \$5500. Dallas, OR. 503-871-8108

316 Trailers Misc.

WANTED
WANTED: 48' hopper bottom, 3 axle trailer. 503-719-2545



New Trailmax Trailers: TRD-54T, 17.5, tilt deck, 66,600 GVW; T-12-UT, 4+16 tilt, 14,000 GVW; T-16-UT, 4+16 tilt, 18,000 GVW. Brattain International, Albany, OR. 541-928-3324, ext. 1.

45' Trailmobile trailer with 48' removable Christmas tree rack, excellent tires, excellent for hauling Christmas trees, \$4200. Monroe, OR. 541-321-9088

Great Dane 48' Drop Deck Trailer: Good condition, \$10,000. Haines, OR. 541-910-0957

222 Truck/ Auto Parts & Accessories

Tim's DIESEL TRUCK REPAIR & FARM MACHINERY

- TRANSMISSION • REAR ENDS
- ENGINE OVERHAUL
- BRAKE JOBS

New & Used Parts In Stock!

Quality Workmanship at Low Shop Prices



Hubbard, OR 503-981-9151 • Portland 503-224-3466

ARMY TRUCKS

4x4 & 6x6

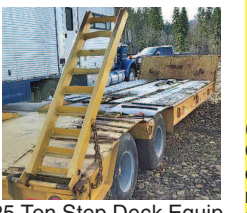
COMPLETE PARTS INVENTORY

MEMPHIS EQUIPMENT

901-774-0600 (TN)
www.memphisequipment.com
THE NATION'S LARGEST ARMY TRUCK DEALER

319 Trailers, Horse & Stock

319 Trailers, Horse & Stock



25 Ton Step Deck Equipment Trailer. Road ready. Great shape, \$8,000. Parkdale, OR. Call Steve 541-308-6026

2016 Lamar 77'x12": 2990 GVWR utility trailer with side racks, \$1800. Sheridan, OR. 503-780-4637

FRONTIER TRAILER SALES
Klamath Falls, OR




2018 C.M. STEEL FLATBEDS

We have a whole new line of C.M. Flatbeds in stock to fit Ford / GM / Dodge.

Single rear wheel, dual rear wheels, long and short beds, 3 trim packages to choose from.

Call or stop in with any questions. Or visit:
www.frontier-trailersales.com
Financing Available • 877-467-0418

www.trailer-world.com • www.trailer-world.com

Best Trailer...Best Price!

Big Tex 10ET & 14ET Equipment Trailers WITH INSTANT REBATE



14ET 18 MODEL WITH KNEE RAMP MSRP \$4,887.22 SALE \$4,099 LESS -\$250 INSTANT REBATE YOUR PRICE \$3,849

10ET 18 MODEL WITH KNEE RAMP MSRP \$4,511.28 SALE \$3,799 LESS -\$250 INSTANT REBATE YOUR PRICE \$3,549

- Offer good through Nov. 30, 2017
- Drop Leg Jack
- Dexter Axles with Brakes
- Treated Wood Decking
- Kne Ramp & Mega Ramp models in stock. More semi loads on the way!

TRAILER WORLD
A Division of **WORLDWIDE TRAILER SALES**

Financing Available, OAC
John 3:16
Covering western & eastern Oregon, Washington, and Idaho

Ontario, OR: 541-889-4310
Woodburn, OR: 503-981-8777
Bend (Tumalo), OR: 541-389-9849

COMING SOON TO HERMISTON, OR
www.trailer-world.com • www.trailer-world.com

319 Trailers, Horse & Stock

319 Trailers, Horse & Stock

FRONTIER TRAILER SALES
Klamath Falls, OR

WHAT'S ON YOUR HITCH?

FEATHERLITE TRAILERS
Safe. Secure. Smart.

2017 Featherlite 8413 stock combo, 7x20, tack room.....**SOLD**

2016 Featherlite 8127, 7x24.....\$19,250

2015 Featherlite 8127, 7x20 GN...1 left! \$17,000

USED TRAILER BLOWOUT!
Additional \$300 OFF these prices!

2014 Featherlite 8127, 7x20 GN.....\$15,500

1999 Featherlite 8546, 7x19, 3H, slantload, GN.....\$13,500

1994 Econolite, 3H, gooseneck.....\$4,900

1978 Felps, 6'x16', 6' tall, gooseneck.....\$2,395

1987 Circle J Rancher, 7'x16', 6'8" tall.....\$3,900

1987 Circle J Bronco, GN, 6'x16', 6'8" tall.....\$3,500

www.frontier-trailersales.com
Financing Available • 877-467-0418

WESTERN TRAILERS
BOISE, IDAHO

Great Dane WWW.WESTERNTRAILER.COM Great Dane

ALL TRAILERS IN STOCK AND READY FOR DELIVERY!



2018 MUV-ALL 4870 FTX Tandem Axle, Folding Tail, 35 ton single drop. \$59,669 FOB Boise



(2) Sets - 2015 38' & 20' Western Trailers, AG 45 Hoppers, Air Ride, Aluminum Wheels. \$68,000 E.A.



2018 53' Western Spud Express, 4 Axle, Air Ride. P.O.R.



2010 43' Timp Hopper, Air Ride, Aluminum Wheels. \$23,500

888.344.2539