



# Capital Press

The West's **Ag** Weekly

# A COLLEGE DIVIDED DIVIDED

### WSU faculty group, administration split over how research is managed at CAHNRS

By **MATTHEW WEAVER**  
Capital Press

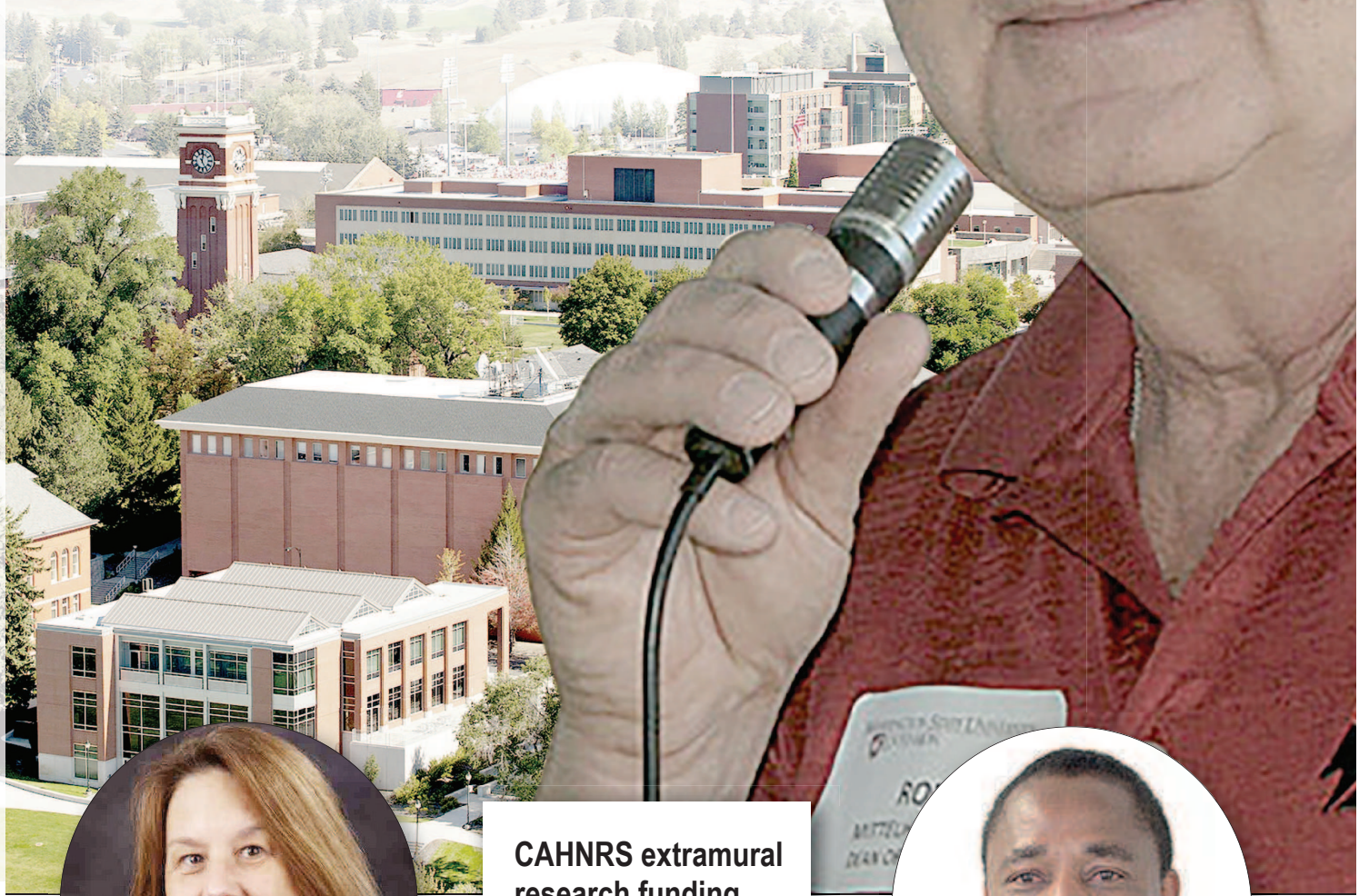
**P**ULLMAN, Wash. — In response to complaints from a faculty group that commodity commissions exercise an outside influence over research, the head of Washington State University's agricultural college has defended the school's direction, saying that as a land grant institution its role is helping stakeholders solve problems.

At the same time, researchers should have the freedom to study a problem however they want, but that research must be scientifically sound and verifiable, said Ron Mittelhammer, dean of the WSU College of Agricultural, Human and Natural Resource Sciences.

"We are there to report objective outcomes, regardless of their popularity," he said.

But a faculty group believes academic freedom has taken a backseat to stakeholder interests. Donna Potts, WSU chapter president of the American Association of University Professors and an English professor, told the Capital Press she has received complaints from 30 CAHNRS faculty members who say college administrators pay too much attention to stakeholder interests and ignore researchers' academic freedom. CAHNRS has 588 faculty and non-faculty post-doctoral researchers.

Turn to **RESEARCH**, Page 12

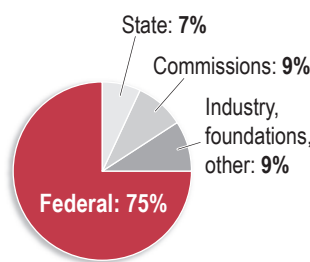


**"I think they do feel industry is calling all the shots (and) shared governance has been compromised."**

**Donna Potts,**  
WSU chapter president of the American Association of University Professors

### CAHNRS extramural research funding sources, FY2015

(Total budget for FY2015: More than \$82 million)



Source: College of Agricultural, Human and Natural Resource Sciences, WSU

Alan Kenaga/Capital Press



**"They'd say, 'This is what we want you to do,' and if you don't do what they want you to do, of course you're setting yourself up for not getting any funding."**

**Nnadozie Oraguzie,**  
a former WSU sweet cherry breeder

TOP PHOTO: Ron Mittelhammer, dean of the College of Agricultural, Human and Natural Resource Sciences at Washington State University (in background). While academic freedom is important for researchers, so are the interests of commodity commissions, which provide much of the funding for research projects, he said.

## So far, so good for PNW snowpack

By **ERIC MORTENSON**  
Capital Press

It's early in the season, but the winter snowpack, which determines irrigation water availability for many Pacific Northwest producers, is off to a good start.

The USDA's Natural Resources Conservation Service said the snowpack is building, especially in the Northern Cascades and the Central

and Northern Rockies. Some of the agency's automated Snow Telemetry, or SNOTEL, stations in those regions recorded more than 2 feet of snow at the end of October. Much of that came from the cold "atmospheric river" that flowed across the Northwest the weekend of Oct. 21-22, bringing heavy rain and snow before giving way to a stretch run of sunny fall days.

As a result, reservoirs are filling and the precipitation in most river basins is well above normal for this time of year. In Oregon, precipitation was measured at more than 100 percent of average in 11 of 13 basins. The Willamette basin stood at 176 percent of average, and the Hood, Sandy and Lower Deschutes region measured 186 percent of average.

The numbers should be taken with a grain of salt, however, because they measure and compare only from Oct. 1, the start of the water year for statistical purposes.

Averages are calculated from measurements taken from 1981 to 2010.

The National Oceanic and Atmospheric Administration predicts a cool and wet winter for northern tier states that include, Oregon, Washington and Idaho east to the Dakotas. The rest of the lower 48 states will have warmer and drier weather this winter, according to NOAA.

Julie Koeberle, hydrologist with the NRCS snow survey office in Portland, said the La Nina pattern forecast for this winter usually correlates with a good snow year in northern tier states.

"Overall it's good news for most of the state and the Pacific Northwest," she said. The pattern often doesn't hold for parts of Southern Oregon, however. The Owyhee and Lake County basins, in Southeast Oregon, are the only ones with less than average precipitation so far this water year, according to NRCS.

## Counties, timber group want to resume Cascade-Siskiyou litigation

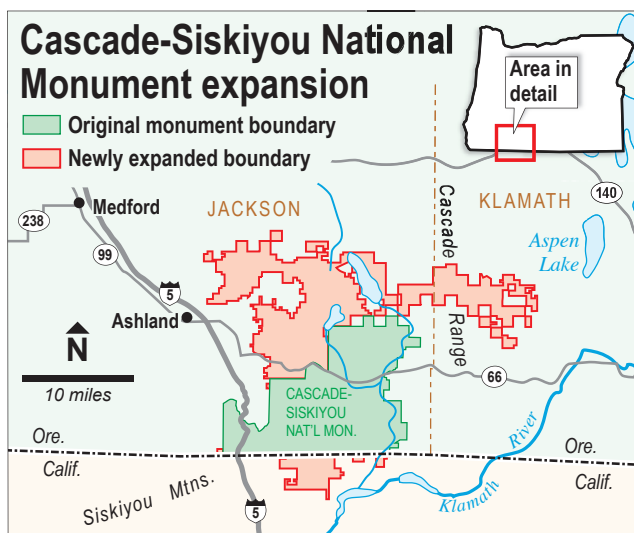
### Lawsuits remain on hold until Dec. 1, pending Trump administration review

By **MATEUSZ PERKOWSKI**  
Capital Press

Groups representing Oregon counties and timber companies want to resume litigation against the federal government's expansion of the Cascade-Siskiyou National Monument.

However, a federal judge is delaying proceedings in the two lawsuits until Dec. 1 to give the Trump administration more time to consider scaling back the monument's size.

The monument's bound-



Alan Kenaga/Capital Press

aries were increased from about 66,000 acres to 114,000 acres in the waning days of the Obama administration, angering livestock producers and timber companies that rely on the public land for grazing and logging.

Most logging is prohibited within the monument and the designation also has the potential for grazing restrictions.

Turn to **TIMBER**, Page 12

## DON'T MISS OUT!

Subscribe to the Capital Press E-mail Newsletters and stay informed on the topics that matter most to you.

Visit [www.CapitalPress.com/Newsletters](http://www.CapitalPress.com/Newsletters) and sign up today!



**Capital Press**  
The West's **Ag** Weekly



7 29467 70125 0