

821 Christmas Trees

Beautiful Natural Nobles and Grands: 8' to 20', thousands available. You cut or I cut. Cedar and boughs available. Southwest WA. 360-795-3809

Attention Christmas Tree Growers: Complete management services available. Planting, cultivation and harvesting. Also, sales available. High quality work, licensed and bonded, backed by 50 years experience, BTN of Salem, OR. 503-881-8610

(1000) Beautiful Douglas Firs: 6'-8'. Chehalis, WA. 360-520-3760

De Jong Christmas Tree Baler: excellent condition, \$2,500. Independence, OR. 503-838-2413

Natural Noble Fir: 6' to 15'. Cornelius, OR. 503-359-4053, 971-263-1522

Cash Paid. Top Prices. Christmas Tree Fields. Any Condition. Oregon, Washington. 503-873-6774, 503-551-5809

#1 Nordmanns: 7', \$29. 8', \$35. 9', \$40. 10', \$50. 11', \$60. Natural Nobles 12', \$50. Nordmann and Noble boughs \$750/ton. Rochester, WA. 360-789-1911

Douglas Fir Boughs for wreaths, garland, etc. You/ We cut. Silverton, OR. 503-991-6668

Dejong 1500 3 pt. PTO tree shaker, asking \$1,200. Howey 214A baler, asking \$2,500. Cornelius, OR. 503-789-7050

Big Noble Firs: 10'-15', cultured and semi-cultured. Chehalis, WA. 360-520-3474

Wanted: Noble Fir and Cedar Boughs. Troutdale, OR. Call 503-666-7896 or 971-506-0991

(500) Noble Firs #1. (1000) Noble Firs #2. S Pines. You harvest. Gresham, OR. Jim or Lori 503-663-5264

Greenbriar Ag Management Offering Professional Christmas Tree Services: Experienced, quality work, planting through harvesting, stump grinding. Sales, brokering, licensed & bonded contractor. Farm & Forest Labor License #10628 Stayton, OR. 503-932-2323 greenagmgt@wvi.com

Natural Noble and Natural Fraser Firs: 6' to 15'. Chehalis, WA. 360-264-5598

Looking for approximately 800 various size Christmas trees. Nobles, Nordmanns, Dougs and Grands. 509-750-9050

822 Nursey Stock - Plants

HAZELNUT TREES AVAILABLE for this season. Yamhill, \$6.00. Jeffersons, \$4.00. Pollinizers, \$6.50. Bare root stock. Full spray program. Rickreall, OR. Keith 503-871-0645

Blueberry Plants: Duke and Legacy, Quantity Discounts, \$3.00. Scio, OR. westfarminc@gmail.com

Subscribe Now To Capital Press And Get Connected Directly To Regional Agricultural News! Call 1-800-882-6789

Blueberry Plants



Northern Highbush, Southern Highbush, Rabbiteye

"Providing superior plants and service for over 35 years."

(503) 873-1200 www.oreblueberry.com

Blue Ribbon The Early Season Just Got More Flavorful. FALL CREEK FARM & NURSERY, INC. 1.800.538.3001 | www.fallcreeknursery.com

822 Nursey Stock - Plants



Blueberry Plants (20) varieties: 1, 3, 7 gallon, 6 field grown. Raspberry, Marion, Boysen, Currants. Wholesale pricing. Canby, OR. 503-730-4788 jimgeiselman@canby.com www.canby.com/morningshade



Hazelnut Trees: McDonald, Jefferson, Yamhill, Sacajawea, York, Eta, Theta, Felix. Dayton, OR. 503-864-4422



Bare Root Hazelnut Trees: We have up to (30,000) bare root Yamhill hazelnut trees that will be ready for 2017-2018 planting. Along with: York, McDonald, Sacajawea and Webster for pollenizers. Sherfy Farms, Albany, OR. 541-979-7739

EMERALD GREEN ARBORVITAE: rooted cuttings and 2-1/4", liners available. Forest Grove, OR. Call 503-359-7540



Yamhill and Jefferson Hazelnut Trees: Large Quantities. Nursery Grown. Blue Heron Farm. Independence, OR. 503-838-3779

McDonald and Wepster varieties for 2018 and 2019 planting. Deposit required. \$8. Salem, OR. 503-508-6377

Hoody Barley Seed: a winter forage barley. Also have certified organic hay for sale. Vale, OR. Jerry 541-212-9378

Quality VNS Alfalfa Seed: \$2.50/ lb. Chris Kreggers, Touchet, WA. 509-394-2400

Cheap Blended Cover Crop Seed: 25 cents per pound. Blended Triticale Radish, Triticale Crimson Clover and Radish. Pallet quantities only. Albany, OR. 503-510-7779

Pasture Seed \$1/ lb. Lawn Seed \$1/ lb. Wheat Straw \$100/ ton. Grass hay \$120/ ton. Wheat \$6/ bag. Rickreall, OR. 503-623-6922



Cover Crop Seed, Native Seed and more. Clean and quality. Sudan grass on special. Albany, OR. Call/ text Alana Kenagy 541-905-2111

825 Fertilizer



Chicken Compost Processed Chicken Manure Compost. Ground processed and screened for easy handling. We load your trucks fast or deliver with ours. Truck scale available. We deliver almost anywhere in Washington State. Mossyrock, WA. 360-880-2128. Mossyrock, WA. 360-880-2128



Compost from Certified Organic Feedlot, screened to 3/8". Lots of volume, \$22. Merrill, OR. 541-880-8318

"Thanks! Very effective ad!" William Krieg • Portland, Ore. Call 1-800-882-6789 to advertise.

822 Nursey Stock - Plants

826 Organic

WSDA Certified Organic Alfalfa Hay: 1st, 2nd, 3rd, and 4th cutting available, approx 350 tons. Dairy quality hay. Tests available, 4x4x8' bales, \$200/ ton. Grand View, WA. 509-840-3375

Certified Organic Alfalfa Feeder and Dairy Quality. Tests available. Call for price, includes delivery. Ephrata, WA. 360-305-9798, 509-237-9302

Organic Barley Straw: 3x4 Big Bales. Klamath Falls, OR. Call for delivery & Prices: (503)930-2738

550 Tons of Eastern Oregon Certified Organic Alfalfa, 1st, 2nd, 3rd cutting, \$180/ ton. Delivery available 541-823-2769

2nd Cutting Organic Alfalfa: \$275/ ton, no rain, 3rd cutting organic Alfalfa, \$200/ ton, rained on. 4th cutting, no rain. Bonanza, OR. 541-891-8647

2017 Clean USDA ISDA Certified: organic Alfalfa, super clean, 4x4 bales, 1st, 2nd and 3rd cutting available, certified. Caldwell, ID. 208-739-8660 Kurtis

Certified Organic Grassy Alfalfa: 400 Ton, 2nd and 3rd cut, 3x4 bales, \$175- \$225/ ton. Delivery available in truckload lots. Northern CA. 530-598-2055

828 Misc for Sale



BEET SHARES WANTED - Rent or Buy Magic Valley Beet Shares. Burley, ID. 208-300-0010

Orchard Ladders: Aluminum, (1) 14', and (2) 16'. Buckets. Newberg, OR. 503-538-2688

PLASTIC DRUM SALE: Like new 55 gallon closed-top plastic drums, \$9.95. Discounts available on purchases of 10+. GloryBee Factory Store, 29548 B Airport Rd, Eugene, OR. 541-689-0919

869 Livestock Equip. & Supplies

Silencer Hydraulic Chutes. Luco hydraulic chutes. Express portable corrals. Stampede tubs and alleys. All in stock! NW Farm Supply, Hermiston, OR. Call Mike 541-561-6047

Powder River Squeeze Chute: auto head catch and preg gates, \$1800 OBO. Moses Lake, WA. 509-760-8172

Bale Barn Feeders In Stock: horses or cattle. NW Farm Supply, Hermiston, OR. 800-801-5650 or Mike 541-561-6047

Livestock Panels: 16' (6) rail, (3) brace, \$116 each. 12' panels, (6) rail, (2) brace, \$93. Bow gates, all lengths and sizes. These panels are new Green color, hundreds available. Heavy 16' Feeder Panels, \$300 each. La Grande, OR. 541-805-9279, 541-963-6258

Ranchers Retiring Portable calving/ nursing pen, \$2,500. Calf table, \$600. Noble gates, 3'-15'. 13' heavy 6 bar panels, 16' feed panels, various length panels, water tanks, electric fence. 13 ton bulk grain bin with auger, \$3,000. Irrigation pipe, K-line. Walla Walla WA. 509-529-7635

872 Dairy Eq. & Supplies

(1) Mueller 800 gallon milk tank. (2) milk keepers: 250 & 500 gallons. All stainless steel. Scio, OR. 541-619-6612

Kiln Dried Shavings: truckload/ minimum 18 unit load, Forest Grove, OR. 503-849-0216

Polydome Calf Nursery: Hutches available for various climates. Western Polydome, Inc. Monroe, WA. 800-822-5837

Surge milkers, surge vacuum pumps, pulsators and misc parts. Manzanita, OR. 503-368-6442

Buying or Selling Capital Press is here to help you! 1-800-882-6789 or FAX 503-370-4383 www.capitalpress.com

NEW MANURE SPREADER

400 bu. • BUY OR RENT Call Scott at Barr-Tech Compost/Organics Recycling 509-590-0437 www.Barr-Tech.net Sprague, WA. 43-2/101

875 Tanks & Storage

5000 Gallon double walled tank. 5000 Gallon double walled 2 compartment tank (2500/2500). 4000 Gallon double walled tank. Salem, OR. 503-881-9803

875 Tanks & Storage

8000 Gallon double wall fuel tank, plumbed with pump and meter included, \$10,000. Salem, OR. 503-932-6191



Water Storage Tanks: 2500 gallon Norwesco, black (inhibits algae), ONLY \$895! We stock tanks from 200 gallon to 5000 gallon. Perry's Supply. North Bend, OR. 541-756-2051

878 Generators

Hesco Industrial Generator: 1 phase, 120/ 220V, 10K, 1800 RPM, quiet, 4 cyl., liquid cooled engine, \$1550. Salem, OR. 503-363-1739



GENERATORS: Low hour takeouts, 20kW to 2000kW, diesel, propane, & natural gas. Cooperstown, ND. We ship nationwide. 701-371-9526 or 701-367-4305. www.abrahamindustrial.com

SOLAR SYSTEM BATTERIES: Marathon 12V 155AH AGM, 10/12 year battery life, 119 lbs each. Built in 2013/ 2014, \$150/ each. 6 or more, \$100/ each. Prineville, OR. Mike, 541-480-1722

887 Irrigation Equip.

(5) 1/4 mile Farmland Wheel Lines: 76" wheels x 4" aluminum pipe, gear reduction/ chain drive movers with Honda motors, \$1500 each. Western Idaho. 208-250-7148

IRRIGATION EQUIPMENT BOUGHT, SOLD, RENTAL.

Design of Effluent Handling Systems - Gates, Valves & Aerators New & Used Parts. • Aluminum Pipe • Certa-lok • Siphon Tubes • HDPE • Sand Media Filters • Wheel Lines • Pumps

Office: (209) 460-0450 Fax: (209) 982-1832 www.pacsouthwestirrig.com Carlos (209) 481-7677 Jim (209) 986-0099 887-40-4-3/102

899 Heavy & Indust. Eq.

ATI Machinery, Inc. 1-888-461-0625 Five Points, CA Serving CA & AZ Farmers since 1975

899 Heavy & Indust. Eq.

887 Irrigation Equip.

Pivot 1997 TL 9 tower 1550' plus/ endgun 14.9x24 tires (good shape) fairly new Nelson rotator sprinkler package \$15,000. Crane, OR. 541-589-1056

(75) Aluminum Irrigation Hand Lines: 40', 3" pipe with 2' risers, no sprinklers, hook and latch style, in good condition, \$55 each. Grand View, WA. 509-840-3375

Zimmatic Pivots: (1) 7 tower with Boss panel, (2) 3 tower with Grow Smart panels. Star, ID. 208-941-2755

(60) Used Pivots: Engines, pumps. Garden Valley, ID. Call Mike at 208-420-1480, or see www.pivotsplus.com

Pivots: Good, various lengths, all brands & late models. No rust. Plus some pivot parts, and buried wire. Call Keizer, OR. 503-881-3232, 503-390-3210

893 Logging Equip.

Older Machinery: House log machinery, chippers, vans, debarker, new rock blade, John Day, OR. 541-575-1525

894 Sawmill Equip.

CASH FOR SAWMILLS: We buy Wood-Mizer, Mobile Dimension, Mighty Mite, and more. Portland, OR. Call 971-271-8070

896 Forklifts

Hyster Model 60: 1995, propane, rebuilt engine, new drive tires, 3 stage mast, side shift, \$8000. Springfield, OR. Ask for Bob 541-726-3098



CAT R-80, diesel, 4WD, towable 8000 lb., 24' lift, \$14,000. McMinnville, OR. 503-550-7625

Used Lift Trucks Also New & Used Parts All sizes, makes & prices LIFT TRUCK SERVICE 888-890-1450 forkliftsales.com Ellensburg, WA 43-3/102

125E Dresser Dozer: 4-in-1 loader bucket, sweeps, rock guards. Runs strong. Stops/ starts/ steers. Very dependable, \$14,500. Prineville, OR. Mike 541-480-1722

899 Heavy & Indust. Eq.

Farm Seller™ www.farmseller.com AMERICA'S FARM AND RANCH DATABASE

NOW RENTING! D8T-SU 3-shank rear mount ripper. atimachinery.com 43-3/102

896 Forklifts

Diesel Engines For Sale: came from hysler lift trucks. Yanmar 3.3L, 2012, less than 100 hours, \$1950. Kubota V3600-T, 2011, tier 3 with SAE3 housing, approximately 2000 hours, \$1850. Kubota 3.8L engines, low hours, no engine control unit-use as parts. Oregon City, OR. 503-631-8487

899 Heavy & Indust. Eq.

CAT 623-B: Self-loading scraper, good condition, \$39,500. D-6 H U-dozer with tilt and ripper, near new engine and hydraulic pump, \$86,500. Salem, OR. 503-362-3055



CAT 613B Paddle Wheel Scraper: good rubber, 3208 CAT engine, air brakes, runs good! \$19,500. Gaston, OR. 503-789-3726



John Deere 762B Paddle Wheel Scraper: good rubber, laser level, 1991, runs good! \$22,000. Gaston, OR. 503-789-3726

Excavator Buckets and Attachments: used equipment, compaction wheels, Hitachi EX200 Mark3, Portland, OR. 503-313-7922

T600 Allis Chalmers loader, backhoe, tractor: runs great, everything works, asking \$5000. Gaston, OR. 503-351-8454

International T340 Crawler with 4 in 1 drott loader, \$7000. Coquille, OR. 541-347-6202



125E Dresser Dozer: 4-in-1 loader bucket, sweeps, rock guards. Runs strong. Stops/ starts/ steers. Very dependable, \$14,500. Prineville, OR. Mike 541-480-1722

899 Heavy & Indust. Eq.

FRESH SAWDUST: Consistently fair pricing. Forest-Grove, OR. For pricing call 503-849-0216

902 Farm Equip. Parts

902 Farm Equip. Parts

899 Heavy & Indust. Eq.

Dresser TD-40 Dozer: single shank ripper, semi-U blade, \$55,000. Paisley, OR. O'Leary Equipment. 541-943-3318. Leave a message.

CASE INDUSTRIAL PARTS We sell genuine, after market, and used CASE parts at discount prices nationwide. Call For Free Catalog.

CENTRAL EQUIPMENT AFTER MARKET & USED PARTS Medford, OR (888) 593-8749

902 Farm Equip. Parts

Starters, alternators, and generators. Call 503-364-3650 or visit Walz's Rebuilt - 348 Market St. NE., Salem, OR.

905 Antique Farm Eq. & Parts

1957 Super 55 Oliver Tractor, completely restored with new rubber all around, \$5,000. Lynden, WA. 360-815-2883

1942 Johnny Popper: new, rebuilt engine, new paint front to back, fun and parade ready! \$4200. Woodland, WA. 360-225-3525

John Deere model 40 crawler: with blade, runs good, \$4500. Also Massey Ferguson 41 rear mount sickle bar mower, great shape, \$2000. Cathlamet, WA. 360-431-6488

907 Nursery Equip. & Supplies



(2) Used Nursery Conveyors. Possible dual fuel Honda engines, \$1500. Cornelius, OR. (503)849-0216

Don't Miss This One!

Shade House Kit: Nearly new, great condition. 225 complete arches 21'W x 11'H covers approximately 1 acre set at 10' bays, \$15,000. Modesto, CA. 775-737-4211

USED NURSERY CONTAINERS:

Used, but reusable nursery containers. All sizes. Inventory changes daily. Call for current availability and prices. Sawyer Farms, Scio OR. 503-769-3417, juddsfarm@wvi.com (also, wanted used containers)

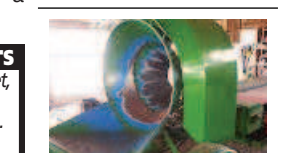
FRESH SAWDUST: Consistently fair pricing. Forest-Grove, OR. For pricing call 503-849-0216

902 Farm Equip. Parts

902 Farm Equip. Parts

911 Hay Equip.

New Holland 1431 Pull Behind Rotary Swather: very good condition, ready to cut hay, \$8750. Grand View, WA. 509-840-3375



(2) Balers: Evergreen and Custom Upgrade, Honda Engines, excellent condition, \$5000 each. Montesano, WA. 206-972-7130



1989 370 Freeman Baler: Good condition, \$12,000. Fall River Mills, CA. 530-227-3411

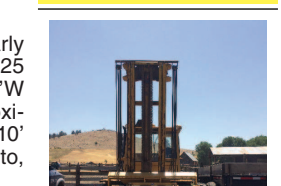


Freeman 5000: Big Bale stackwagon. Reconditioned, Allis Chalmers diesel engine, Allison automatic transmission, \$25,000. Sublimity, OR. 503-769-6681



Kuhn FC353 Hydra swing mower conditioner, field ready, \$15,500. Oakville, WA. 360-507-6810

New And Used Parts: for all models New Holland bale wagons. Largest inventory in North America. Sod Busters Sales, Polson, MT. 877-735-2108 or 406-883-2118



CAT V200 Squeeze: Load Capacity 20,000 lbs. Forward Reverse Shuttle. 3,682 hours, \$25,000. Etna, CA. 530-598-6520

HOT! SAVINGS at Capital Press 1-800-882-6789 www.capitalpress.com

902 Farm Equip. Parts

902 Farm Equip. Parts

RIVERBROOK FARM • HAULING SERVICE Brooks, OR WE HAUL! • Building Supplies • Farm Equipment • Construction Equipment • Heavy Equipment • Granular Fertilizer • Grain/Wheat 888-393-1819 • www.riverbrooktrucking.com

887 Irrigation Equip.

END OF SEASON SPECIALS! Winterize and Repair your equipment now so it's ready to work for you next season!

ERNST IRRIGATION ccb# 185365 TRAVELER SERVICE* Annual service and inspection 10% OFF PARTS & LABOR PANEL INSPECTIONS* Service Includes the following: Loose connections • Noisy starters • Rusty components • Water damage • Check for signs of heat build-up 10% OFF PARTS & LABOR VFD SERVICE* Inspection • Change filters 10% OFF PARTS & LABOR PUMP SERVICE* Great time to have bearings, packing, and seals checked out! 10% OFF PARTS & LABOR Special valid for work scheduled by Jan. 31, 2018. *Additional fees may apply for parts and repairs. www.ErnstIrrigation.com • (503) 633-1111 20179 Main St., St. Paul, OR 97137 Open Mon-Fri 8am-5pm; Sat 8am-2pm

Nyssa Tractor & Implement Our yard has 5 miles of road, the rest is Farm Machinery & Parts. www.nyssatractor.com Toll Free (888) 372-4020 Nyssa, OR

BIG TRACTOR PARTS, INC. ~ GEARED FOR THE FUTURE ~ STEIGER TRACTOR SPECIALIST 1. We are your source for new & used Steiger drivetrain parts Series 1 - 9300 Series. 2. We rebuild Spicer manual transmissions, Fugli power shift transmissions, dropboxes & axle with ONE YEAR WARRANTY! 3. We now rebuild computer control boxes for Steiger