

354 Auction Sales

354 Auction Sales

354 Auction Sales

354 Auction Sales

354 Auction Sales

354 Auction Sales

**WOODBURN AUCTION YARD**  
503-981-8185

Next 2-day consigned machinery sale: Jan. 27<sup>th</sup> & 28<sup>th</sup>

Miscellaneous Auction  
Every Tuesday • 9AM

597 S. Pacific Hwy • Woodburn, OR 97071  
1/2 mile south of Woodburn, OR on Hwy. 99E

[www.woodburnauction.com](http://www.woodburnauction.com) 354-39-14-3/106



# The Northwest's Best Auctions Are In The Capital Press

and online!

Go to Marketplace.CapitalPress.com and search for "Auctions" after 5:00 PM every Friday. May vary depending on holidays.



210-152-4/13

## HEAVERLO NW AUCTIONS

### LARGE CONSIGNMENT AUCTION

Ag • Industrial • Municipality • School Surplus • Seizures • White Lightnin Hauling Retirement

Saturday, October 28, 2017 • 9:00am Sharp  
HEAVERLO NW AUCTION CENTER 1212 S. KEYS RD, YAKIMA, WA

#### HIGHLIGHTS



1985 Ingersoll Rand 160 CFM Air Compressor



2004 PJ Dump Trailer



2001 Peterbilt Tractor Truck



2001 JD 110 Backhoe 4X4, Dsl



JD 6200 Tractor w/Loader 4X4



2006 Peterbilt Cab & Chassis, 4 Axle

• (4) BACKHOES: Cat 416, JD 110/300, MF 50 • (9) FORKLIFTS-MANLIFTS: JCB 506 Telehandler, 2 Hyster 8000lb, Snorkel, Grove • (1) CAT 12 GRADER • (1) BROCE SWEEPER BROOM: Dsl; • (4) 5 & 12 Yrd DUMP TRUCKS-Water Truck: 4000 Gal Water Truck • (8) 2 TON TRUCKS: 2008-1981 Bucket, Garbage, FB, Roll Off, Utility • (8) 1T TRUCKS: 2005-1967 Ford, Chevy, Dodge FB's, Utilities • (12) SEMI TRUCKS: Peterbilt, Freightliner, Mack Volvo, IHC • (13) SEMI TRAILERS: Great Dane, Frueh, 7-Sets Flat Trailer Doubles, Refer, Dry Vans, Step Decks • (26) PICKUPS-VANS-BUSES: 2008-1984 Chev, Ford, Dodge, Freightliner, IHC 3/4T, 1/2T, 4X4 • (12) CAR TRAILERS-BACKHOE TRAILERS • (26) SUV'S-AUTOS-SEIZURES: 2008-1992 Honda, Mitsubishi, Suzuki, Impala, Crown Vic, Explorer, Toyota, Dodge, Nissan, Cherokee, Liberty, Tahoe, Beetle • (14) ATV'S-CART-RV'S-CAMP TRAILER-MOWERS: 4 Wheelers, JD/Toro Commercial Mowers • (9) FARM TRACTORS: JD, MF, Ford, Farmall, 3Pt, some 4X4 w/Loaders • (50+) Farm, Orchard, Hay, Livestock Equipment-Irrigation-Lawn & Garden • (4) AIR COMPRESSORS-WELDERS-GENERATORS: Fencing, Lumber, Shop Equipment, Tools, Tires, County & School Surplus.

View our website for complete lists & photos. Inventory updated daily. Sign up for online bidding. [www.heaverloauctions.com](http://www.heaverloauctions.com)

**Heaverlo NW Auctions** #2445

RL Heaverlo • 509-453-4340 • 509-945-4166 • Yakima, WA

Children 16 & older welcome

42-2/101

**CAPITAL PRESS LINE CLASSIFIEDS**  
Fast Results! Easy to Do!  
CALL TOLL-FREE: OR ONLINE  
1-800-882-6789 / 247 365  
[www.capitalpress.com](http://www.capitalpress.com)

## MOUNTAIN SPRING FARM EQUIPMENT AUCTION

THURSDAY, NOVEMBER 2ND • 9AM PST

The Dale Dyk Estate



AUCTION LOCATION: ELLENSBURG, WA - From Westbound I-90: Take exit 106 and turn left over overpass. Drive .2 miles and turn left on onto Thorp Hwy. After .4 miles, take slight left onto Weaver Rd. Drive 1.7 miles to auction location. Please observe parking signs. There will be two entrances to park in the north field.

#### (5) JOHN DEERE TRACTORS

2011 JD 6430 Premium MFWD Tractor • 2011 JD 6430 Premium MFWD Tractor • 2009 JD 6430 Premium Tractor • 1998 JD 6410 Tractor • 2013 JD 5083E MFWD Tractor • 1989 Case IH 9130 Articulating 4WD Tractor • Ford TW-30 MFWD Tractor • Ford 5000 Tractor • Ford 4000 Tractor



#### SWATHER, STACKCRUISERS, BALERS & HAYING EQUIPMENT

2011 JD R450 Swather w/2011 JD 990 Rotary Header - GreenStar Ready, 1,003 Swather Hours, 824 Header Hours, A/C, Radio, Swather • 2005 JD 990 Swather Header • 2013 H9880 Stackcruiser • (2) 2004 NH BW28 Stackcruisers • Freeman 385 Baler • (4) Freeman 370T Balers • Twinstar 2027 Hay Rake • (2) Sitrex HM300 Hay Tedders • (2) Vicon Hay Bob 300 Hay Tedders



#### EXCAVATOR, FORKLIFTS & BACKHOE

2004 CAT 320C Excavator - 5,915hrs at Listing, 32" LGP Steel Pads, 8-Rollers, 90%+ Pins, 9' Stick, 24" Bucket, 27.5" Thumb, A/C • Hyster 170HD Bale Squeeze • Hyster 50 Forklift - Propane, Dual Pneumatic Front Rubber, Sideshift, 3-Stage, 240" Lift • Ford 555C Backhoe - 71hp, 2WD, Cab, 7,035hrs on Tach, Engine Runs, Bad Trans, Xtra-Vator, 24" Hoe • 64" Excavator Bucket • 40" Excavator Bucket • CAT 320 Adapter Plate • Excavator Ripper

#### JD 7300 PLANTER & (2) GREAT PLAINS DRILLS • LINE OF FARM MACHINERY, EQUIPMENT & SHOP TOOLS - SEE WEBSITE TOO MUCH TO MENTION!

TERMS: No sales tax. All lots are sold As-is Where-is. 10% Buyer's Premium on all items purchased at \$2,500 and below. Visit [yarbros.com](http://yarbros.com) for all info and rules.

Chuck Yarbros, Jr. 509.760.3789 [chuckjr@yarbros.com](mailto:chuckjr@yarbros.com)  
213 S. Beech Street, Moses Lake, WA 98837

42-2/101

**CHUCK YARBRO AUCTIONEERS**

CALL FOR DETAILED BROCHURE OR VISIT OUR WEBSITE FOR MORE INFO.  
509.765.6869 • [www.yarbros.com](http://www.yarbros.com)

## FARM LIQUIDATION AUCTION

10% buyer's premium to benefit Klamath County Fair Grounds

**KLAMATH COUNTY FAIRGROUNDS**  
3531 S. 6<sup>th</sup> St • Klamath Falls, OR

**SATURDAY, OCT 28<sup>TH</sup> • 9:00AM**

PREVIEW: OCTOBER 27<sup>TH</sup>

Complete liquidation of the Quarter Circle X Ranch & the James Clark Estate



**HAYING EQUIPMENT:** 2004 John Deere 4995 Swather w/2012 995 16ft Header Cab 1980 Massey Ferguson 760 Combine 18ft header (9) Freeman 330T Baler Recharged to 15X18 (3) Freeman 330W Baler 16X18 2009 Massey Ferguson 2170 3X4 baler w/ accumulator and Harvest Tech 500 moisture monitor Allen 8827 Twin Hay Rake Twin Star 2027 Twin Hay rake H&S Hay Machine II 7ft tedder 1960 Hyster TCT200 Hay Squeeze 18450 lb 22'6" reach 1974 International C04070B Hay Squeeze COE w/Freeman squeeze 1992 New Holland 1085 Bale Wagon.

**TRACTORS:** 1996 John Deere 8100 MFWD w/ Cab AC 18 spd duals, 1976 International 1086 2WD 16spd 1967 Farmall 806D w/ canopy 8spd 1969 Massey Ferguson 165 2WD 6spd 1968 Farmall 1256D 2WD 8spd 1963 Farmall 504D 2WD 5spd 1967 Farmall 656D 2WD 5spd 1975 Oliver 1365 2WD.

**HEAVY EQUIPMENT:** 1979 Caterpillar D5B ag series 30" tracks 6 roller Cab w/LAC Towner 14ft pull scraper w/3005 Laser Beacon System Caterpillar 12 Motor Grader John Deere 5010 Motor Scraper Caterpillar D73T Dozer Canopy winch 1972 Link Belt L55000 Excavator John Deere 410 backhoe and loader Airpro model SP1250 Diesel Air compressor with hose and jackhammer.

**TRUCKS AND TRAILERS:** 1991 Freightliner COE Detroit series 60 Diesel 13spd w/drome 1968 custombuilt A Train High-Boy 30'X96" 1972 Toro 2 axle pup 31" 2001 Chevrolet 2500 Silverado 4X4 Flatbed Duramax Diesel. 1995 Dodge 2500 4X4 5.9 Diesel Auto 243,500 miles w/rebuilt transmission at 200,000 1985 Ford F250 4X4 6.9 Diesel 4 speed w/rebuilt engine and turbo 1984 Ford F250 4X4 Diesel 4spd w/utility box 1977 Ford Ranchero 400 cu in rebuilt auto w/500 miles Ford F750 V8 gas 5X2 1974 International 1600 V8 gas 5spd 1972 Ford F350 Flatbed gas engine 4spd 1968 International 1600 V8 Gas 5X2 1965 International C1200 4X4 V8 gas w/ snow plow 1964 International 1600 V8 gas

3spd 1950 Chevrolet 6400 6 cyl gas 3spd 1950 Chevrolet 6400 gas 4spd 1933 Ford 1 ton truck no title-parts only 1985 Custombuilt 12ft trailer 1974 Muvan Equipment Trailer 25'X10' Beavertail w/ winch 1995 Custombuilt Equipment Trailer 16'X8' 1986 Kiefer stock trailer 16ftX8ft tandem axle Custombuilt pipe trailer Road King 3 Axle dump trailer 1984 White Dump Truck.

**TILLAGE:** Brillion S512 seeder w/ grass seed attachment 12" International seeder International 10G 12" seeder 6 inch spacing double disc openers John Deere BD113 seeder 13ft 6" spacing double disc openers John Deere tandem disc 16" w/18" blades John Deere 670 14" Tandem offset disc w/24" blades Custombuilt 13ft chisel Custombuilt 20' chisel John Deere 13' Chisel (2) John Deere A4200 4 bottom roll over plows Brillion ML1488 14' culti mulcher land roller w/rear aux hyd Custom built 20" harrow (2) Custom built 12' harrows Aer-Way AW1200 10' Aerator Schmeiser 14' roller 2001 Schmeiser SLP14DS 14ft land plane leveler Lely BC1344 tow behind spreader John Deere 915 7shank pull type ripper.

**FARM IMPLEMENTS:** John Deere 84 in brush mower Wyatt Azooka 8"X40" portable grain auger 6ft 3pt blade 3 pt post hole auger (2) Custom built V ditchers MF235 tractor loader Harsh 16' feed wagon box Heider feed wagon PTO Newhouse bale processor PTO 52" hang on forks ROBCO 272 Big Bale flaker feeder holds 6 big bales.

**MISC AG:** Large quantity of aluminum pipe 40"X3" Tel Arc GA304 Arc Welder 3 phase Scotchman Iron worker w/assorted tooling Culverts Tool boxes Railroad ties Custombuilt portable conveyor 20"X30" Gas Wisconsin 2cyl Rain O Flow 3" pump electric 50 hp Fuel Tanks metal fence posts 4" & 5" wheel line parts.

**ALSO: LIVESTOCK EQUIPMENT • MISCELLANEOUS • SPECIAL ITEMS • ATVs**

For a complete list of consigned items, go to: [www.deupreeauctioneers.com](http://www.deupreeauctioneers.com)



FOR MORE INFO, CALL: DEUPREE AUCTIONEERS, LLC  
Stan Deupree • 541-840-6218 [deuprees@yahoo.com](mailto:deuprees@yahoo.com)  
Tom Turk • 541-944-1623 [tturk@deupreeauctioneers.com](mailto:tturk@deupreeauctioneers.com)



42-2/100

## PUBLIC AUCTION

### FINGERJOINT MANUFACTURING

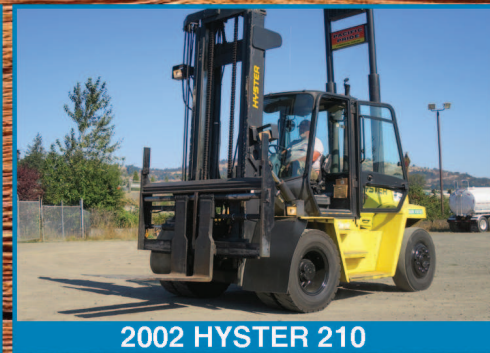
**10AM - TUESDAY - OCT 31**

PREVIEW 8-10AM, TUESDAY, OCTOBER 31

37385 JASPER LOWELL RD., JASPER, OR 97438



1981 INTERNATIONAL 2554



2002 HYSTER 210



2005 DIMTER/WEINIG GRUPPE 350-4



1998 WESTERN MACHINERY FJWMV520

**James G. Murphy Co.**  
Commercial & Industrial Auctioneers



1.800.426.3008 - 425.486.1246  
[murphyauction.com](http://murphyauction.com)

42-1/103

## Ending this week

WA Auctioneer Lic #2144 WA Brokerage Lic #8875  
**BookerAuction.Co**  
5092979292.com PHONE / WEB

• 28 1/2 Acres & Home WAPATO  
• 628 1/2 Forested Acres YAKIMA

## 2 REAL ESTATE AUCTIONS

42-2/101