

561 Ranches

Central Valley Ranch Eugene, Oregon
169 acres of beautiful country living. Spring fed lakes with fish, turkey, goose and duck hunting. Great barn, metal shop, pastures and paved roads throughout. 4541 sq/ft home plus additional approved homesite. Breathtaking views of the valley. 86722 Central Rd., \$2,095,000. Call Shelley Murry, Re/Max Integrity 541-912-1883



200 Acre Ranch near Cove, Oregon: amazing view, large shop, barn and home. Some timber, hay ground and pasture. Call to explore the potential of this property, \$430,000.

Ranch-N-Home Realty, Phillip Burling, John Collins principal brokers. www.ranchnhome.com, 541-963-5450, 1526 Jefferson Avenue, La Grande, OR. 97850

"...Sold both bulls second week. Thanks!" Tiara Farm Port Townsend, Wash. You sell too at 1-800-882-6789.

561 Ranches

2 PROPERTIES: GRAZING TRACT- Union County 563.5 acres with 338 acres m/l of tillable land that was in CRP for over 20 years. Ground has been converted to a grazing tract and a managed tree farm. Current owner has developed a water system from a well on the property to distribute livestock and maximize the lands grazing potential. Property comes with an older manufactured home, loft barn and shop, \$625,000.

LNK RANCHES- Baker Valley 8501 total acres. 3280 deeded, 5102 acres leased rangeland for 250 pair for 5 months and 119 acres leased flood irrigated pasture. Ranch capable of running 800 cows with good management. 4 homes, full set of buildings, shop, covered arena, hay barn and many misc other buildings, \$6,950,000. Ranch-N-Home Realty, Phillip Burling, John Collins principal brokers. www.ranchnhome.com, 541-963-5450, 1526 Jefferson Avenue, La Grande, OR. 97850

561 Ranches

REDUCED PRICE
J-Bell Ranch
8 miles West of Lakeview, OR. 795 acres with 295 +/- acres of ground water rights. 3 manufactured homes, shops, barns, 2 irrigation wells, 6 wheel lines and full line of equipment. \$1,700,000. Favell-Utley Realty. www.favell-utley.com 541-947-2161.

323 Acre Ranch: Eastern Oregon. 2 houses, 2 wells, all hay equipment included, 2 tractors and much more! \$450,000. 541-420-3581



38 Acres+ with well kept 3 bedroom, 2.5 bath home in NE Oregon. Huge barn, stalls and hay storage, metal shop, detached garage. Beautiful views in all directions, small fast flowing year around creek. High producing hay ground and pasture. Elk and deer country, \$414,500. MLS17174680 White Horse Real Estate LLC Bechtelvalley@live.com (541)429-5108

564 Farms

40 Acre Farm- between Woodburn and Silverton: 3 bedroom, 1.5 bath home in nice condition, 24x36 shop, approximately 30 acres Mario berries, \$649,000. www.agribis.com Call Terry Silbernagel 503-559-3200 **Agri-business Real Estate**

Large single story home, 2 shops, 30x70 greenhouse, music/ classroom, private sauna, garden and meditation area. Writers cabin, orchard, \$595,000. Clark County WA. Call 360-356-2589 for pictures/ more information. missnancy1231@yahoo.com

BEST SELLERS ...
"...Sold everything in the herd but a couple of old bulls." Kester Ranch, Cottage Grove, OR Call 1-800-882-6789 and sell too!

564 Farms

FSBO 20 Acres
3 bedroom, 2 bath, 1984 manufactured home, power, water, septic, \$59,000. Burns, OR. 541-589-4948 blossomhut@gmail.com

FSBO
364.01 Acres with 164.80 currently enrolled in CRP. \$360,000. Inone, OR. Call 541-422-7485

"Both Tractors SOLD! Thanks!" Jim Petterson • Gig Harbor, Wash. Sell yours too in Capital Press!

WA ACREAGE
22 Acres Chehalis Nice 3 Bed, Fireplace, 2 Baths, Estate \$225,000
75 Acres Chehalis Land & Merch. Timber & Growing Timber \$250,000
5.5 Acres Centralia Mostly Timber. \$65,000
Frank Dipola Realty
201 S. Tower St.
Centralia, WA 98531
360-736-9561

564 Farms

19.8 Acre Farm, Molalla, OR.
Great Business Possibility: Most recently used as a broiler grow out facility, the property boasts 6 large ag buildings with natural gas heat ranging in size from 305'-400' long by 48' wide, and 2 other large, multi-use ag buildings, barn, shop, RV parking. Spacious, remodeled 3 bedroom, 2 bath, 2648 sq.ft. ranch home that has an amazing great room/ kitchen for entertaining, utility room, \$999,950. Contract possible. ML#17178189. Mark Doveton- Broker/ Owner, Big Meadow Realty, Inc. 503-969-2809

570 Orchard & Vineyard Property

Hyatt Winery and Vineyard:
Winery: Established brands, Yakima Valley, WA. Spectacular views. Tank capacity 135,400 gallons. 26,500 square feet in two buildings with tasting room. Key employees could stay, \$3,150,000.
Vineyard: 70.4 acres with 5 wind machines, \$1,335,000. Marketing brochure available.
InvestmentLand Properties, Inc.
Broker 503-351-2576

Complete Winery: 25 acres of grapes, 25 varieties, includes 4000 sq.ft. country home, \$2,400,000 Hammett, ID. 208-863-6697

573 Timber Property

LOOK!
Timbered land for sale -- 590 Mbf; 80% Douglas fir. Former OR State Hwy 99W Wayside. Approximately 30 acres in Lane County zoned PR & 7 acres in Benton Co zoned EFU. Sealed bids due no later than 5 p.m. 10/17/2017. More info & bid packet: http://bit.ly/WashburneWSproperty-sale or Kammie Bunes 503-986-0630.

123 Acres of Forested Land in Union County, OR. Well stocked with trees. Owner will carry contract, \$123,000. 541-910-7983

576 Land

Grazing Land in NE California
Grazing land east of CalPines, next to Graves Reservoir. 2367 acres and 760 acres. Access is limited, seasonal to some and across public land to some. Seasonal drainage. Great hunting, buck, antelope, game bird. Owner will consider terms for qualified buyer, \$450/acre. SW of Alturas near County Rd 72. 360-675-9091 x3. julia@ipmrent.com

579 Acreage

Lease: 120 Acres New Potato Land: (coming out of Alfalfa), irrigated, no chemicals for past 3 years, very good land. Adams County, WA. 509-771-5987

Land for lease, long term: 560 total acres, 190 acres under water. 9 years organic status, pumps, mainline, and wheel lines. Klamath river water and well. Klamath Falls, OR. 541-884-8937, 541-281-6415

"The Capital Press is IT!" Lorin Zastouli • Leaburg, Ore. Subscribe at 1-800-882-6789

579 Acreage

Motivated Seller: 161 acres in Douglas County. Several Springs and septic approved. 1-5 access, \$340,000. Salem, OR. 503-362-3055

160 ACRES BORDERING 600 ACRES OF BLM! Located on the S Fork of the John Day River, Grant County, OR. LOP tags, on/off grid is your choice, private and secluded just 1 hour from John Day, abundant wildlife, 2 cabins, round barn, 2 level barn, 2 greenhouses, large shop, working corals, 20 irrigated acres, \$600,000. RMLS #17545834. Duke Warner Realty, Dayville, OR. 541-987-2363 www.dukewarnerrealestateoregon.com ddwr@ortelco.net

582 Pasture

Wanted: Winter pasture and or corn stalks for 200 head cows. Contact Ray, 208-740-9264 or rayholes@yahoo.com

WANTED - winter pasture for 125 bred cows, December to May. Prefer CA, OR. 530-398-4083

SUMMER PASTURE: 10,000 acres, 7200 acres deeded, lots of water, high country, Eastern Oregon, \$2,750,000. Tom Phillips Agency 541-889-8401. Email: tomtpa7@gmail.com

5,640 Acres Dry Pasture:

Grazing ground between Ontario and Huntington Oregon, leased for the 2017 grazing season, freeway splits property, Hwy 201 access, fenced and cross fenced, water both springs and well. In addition to spring some years would make good fall and some winter pasture. \$2,600,000. Tom Phillips Agency 541-889-8401. Email: tomtpa7@gmail.com

Pasture 5000+- Acres: Alfalfa hay, grass, and stubble mix, fenced perimeter. Available November 1st 2017, exit by February 19th 2018. Renter to pay water pumping costs. J.T. Ranch, Lander County Nevada, 40 miles south Battle Mountain Hwy 305. Travis 303-916-1844 tjhaymaker@msn.com

651 Help Wanted

Now Hiring: earn extra income that fits your schedule, school bus drivers wanted, bonus incentive for new bus driver trainees, paid training, \$12.88 per hour to start. Pendleton and Helix, OR. Call Mid Columbia Bus today. 541-276-5621

Wheeler County is accepting sealed proposals from persons interested in contracting with Wheeler County to provide wildlife predator and pest control services. This is a personal services contract, beginning in November, 2017 and running through June 30, 2018. A complete job description is available at www.wheelercountyoregon.com Interested persons must submit a sealed envelope containing a resume, letter of interest and reference documents to Wheeler County, Wildlife Predator and Pest Control Services Proposals, PO Box 447, Fossil, OR 97830 no later than 5:00 pm, October 13, 2017. Fossil, OR. 541-763-2912

United Country Real Estate
Jett Blackburn Real Estate Inc.

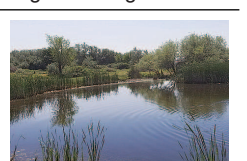
AMSBAUGH MEADOW RANCH LAKE COUNTY OR
3558 +/- ac in one contiguous block. 40 +/- ac BLM & 500 +/- Riparian consists of various native & planted grasses & clovers. Consistently has a carrying capacity of 450 pair. Property is fenced & cross fenced into 11 pastures for easy rotation and use. 823 +/- ac surface water rights. 423 +/- ac ground water rights. Balance of ground is native & sub-irrigated pastures.
\$4,900,000
Curt Blackburn, Broker 541-589-0025 Nancy Gregg, Broker 541-589-1362
707 Ponderosa Village • Burns, OR 97720
541-573-7206 • Fax: 541-573-5011
E-mail: jblackbn@centurytel.net
www.Jettblackburn.com

FAWN ROAD FARM ADRIAN, OR
154.75 +/- acres with 129+/- acres irrigated
Nice flood irrigated farm. Large level fields well suited for growing alfalfa hay, corn, grain & pasture. Currently leased for cattle grazing and hay production. Tear down house and outbuildings. Build to suit your needs. Mild climate and convenient location near Hwy 201.
\$850,000
Mogensen Land
Cell (208) 890-7172
Office (208) 452-3744 Fax (208) 888-1989
Email mike@mogensenland.com Web www.mogensenland.com
MIKE MOGENSEN REALTOR Farm and Ranch Specialist

DECKER'S DEALS!
Contact Everett Decker, agent at John L. Scott-Realty, OR 541-480-8185
email: everettd@johnlscott.com
No luck buck hunting. Getting ready for elk season. I'm good for pie and coffee after a farm ranch tour.
NEW LISTING: 194 ACRES WITH 5 PIVOTS ON 183 ACRES OF NORTH UNIT WATER RIGHTS. Round Up Ready Alfalfa, orchard grass and 400 apple trees. There is an unfinished 7800 sq. ft. home, a 3000 sq. ft. utility bldg., a horse barn, a chicken house plus an 8400 sq. ft. hay shed. **Motivated seller at \$2,600,000**
NEW LISTING: 66.8 ACRES with a pivot in Ochoco Irrigation District near Prineville. Round Up Ready Alfalfa, Big Guns on the corners. Modern 3 bedroom home and a horse shelter. MLS 201707908 **\$700,000**
120 ACRES NEAR REDMOND in Central Oregon Irrigation District. 106 acres Water Right. No Buildings. Possible owner terms. MLS 201707159 **\$550,000**
60.9 ACRES JUST WEST OF REDMOND. Zoned RR 10. Buildable and can be divided after January 2018. MLS 201707755 Possible Owner Terms **\$720,000**
NEW LISTING: 11.47 ACRES approved for a Cap & Fill Septic System. Flat land with some junipers. Paved road and in a good well area. **\$230,000**

564 Farms

137 Acres Nyssa, OR. 91 acres water rights, excellent row crops, 46 acres of hunting land. Live steam, pheasant, quail and dove hunting. Owyhee River is near by. Ground is currently rented and farmed, \$1,027,500. 208-243-1284, atagitricks@gmail.com



Hermiston, OR. \$750,000
160+ acres with 104.8 acres water rights. 3 bedroom 3 bath newly remodeled home. Farm deferral taxes, 2 tax lots. Cement patio, 2 car carport, RV storage, TUGS, (2) 20x20 outbuildings, 2 ponds, chain link fence, kennels. MLS#17187589 Debora Wood, Licensed Realtor, Universal Realty 541-571-0922



Hermiston, OR.
7.77 acres with 3.5 acres water rights. 4 bedroom, 3 bath manufactured home, concrete decking, carport, RV parking, wheel line, 40x36 shop, new roof, kitchen countertops, interior paint, windows in 2017. (2) 50 gallon water heaters, 12x12 pump house, 12x20 livestock barn, 3 HP pump, \$339,900. MLS #17677993. Debora Wood, Licensed Realtor, Universal Realty 541-571-0922

IF YOU HAVE A BEEF - sell it in next week's Capital Press!

DRYLAND FARM FOR SALE (CRP)
+/-1,663 Acres West of Washtucna WA.
Call for Details 509-624-4408
www.hatleycobb.com
Hatley/Cobb Farmland Management and Real Estate

Farmers Grain Real Estate/Elevator & Equipment AUCTION
Friday, November 3rd 10:00AM MDT
255 King Avenue, Nyssa, OR

2-Auctions
Auction 1: REAL PROPERTY GRAIN ELEVATOR - MILL SHOP - OFFICES
5.21 +/- Acres, Plus 1.8 Acres
Leased RR Land. Steel Grain Elevator with 1,404,000 Bushels of Storage, Jacobson MZH4250 40-45 TPH Hammer Mill, Dryer, Truck Scale, Offices, 12,375 Sq. Ft. Shop. Located at: 110, 114, 255 King Ave., Nyssa, Oregon. Real Estate Sells at 10:00AM MDT. Selling subject to Trustee and Court Approval, Chapter 7 Bankruptcy Case# 17-00450-TLM. View By Appointment.

Auction 2: EQUIPMENT TRUCKS - TRAILERS - LOADERS
TRUCKS, COMMODITY TRAILERS, JOHN DEERE ARTICULATING LOADERS, GROVE RT 65 CRANE, SHOP TOOLS. Online Catalog
Coming Soon: Live & Online Bidding Available for Trucks, Trailers, Loaders - All Shop Tools Selling in Live Auction Only. PREVIEW Thursday, Nov. 2nd 10:00AM—5:00PM

www.CorbettBottles.com
208.888.9563
208.377.5700
CORBETT BOTTLES REAL ESTATE MARKETING, LLC

570 Orchard & Vineyard Property

567 Dairy Farms
DAIRY-IDAHO Gooding: Nice dairy, 86 acres, mini pivot, double 10 parallel barn, calving barn, commodity barn, paved feeding area, pipe and cable corrals with shades, 498 head CAFO. Nice home, \$1,200,000. Tom Floyd 208-996-5129 Western Idaho Realty

IF YOU HAVE A BEEF - sell it in next week's Capital Press!

AG Investment Brokers LAND
AG Real Estate Specialists
Orchard Potential (N) of Stoney Creek
1,960 AC, suitable for redevelopment to orchards typical for Tehama County. Six deep irrigation wells. Unique opportunity.
NOW - \$16,562,000
Tehama Cattle Ranch 2,690 AC on Thomes Creek. (5) reservoirs, springs, good fencing. Barns, steel corrals, water, power, hunting and fishing. **SOLD \$2,780,000**
530.529.4400
AGLANDBROKERS.COM
BRE #01707128

567 Dairy Farms

567 Dairy Farms
FOR SALE BY OWNER WASHINGTON DAIRY YAKIMA VALLEY
• 450 Milking and Dry Cows
• 109 Replacement Heifers
• MILK BASE: 900,000 lbs. Darigold Milk Base
• 4 Pivots • 130 Acres
• DOUBLE 11 Barn
• FREESTALLS for 300 Cows
• EQUIPMENT: trucks, choppers, swather, loaders, tractors
CALL: (509) 837-5400 (509) 949-3186

567 Dairy Farms

567 Dairy Farms
FOR SALE BY OWNER WASHINGTON DAIRY YAKIMA VALLEY
• 450 Milking and Dry Cows
• 109 Replacement Heifers
• MILK BASE: 900,000 lbs. Darigold Milk Base
• 4 Pivots • 130 Acres
• DOUBLE 11 Barn
• FREESTALLS for 300 Cows
• EQUIPMENT: trucks, choppers, swather, loaders, tractors
CALL: (509) 837-5400 (509) 949-3186

579 Acreage

GRANT COUNTY, DAYVILLE, OREGON - 24,178+/- acres. Timbered property abundant with wildlife including mule deer, elk, turkey, and bear. **\$27,950,000 CP#02517**
WASCO COUNTY, CLARNO, OR - 47,120+/- ac. 29,279+/- ac deeded with an additional 11,000 ac of BLM and 7,000 ac of USFS leased lands. Over 8 miles of deeded river frontage on the lower John Day River. Exceptional fishing. **\$19,750,000 CP#03015**
UMATILLA COUNTY, UKIAH, OR - 16,200 contiguous ac 7 miles SW of Ukiah. Premier hunting and recreation. **\$12,960,000 CP#01015**
UMATILLA COUNTY, HERMISTON, OR - 6,313.15 +/- acres, 53 bushels average production history, with a CSP contract. The farm contains 6092.15 tillable acres with a proven 97 bushel crop in 2017. Two homes, bunk house, shop, machinery shed, and barn. **\$7,310,000.00 CP#03217**
UNION COUNTY, NORTH POWDER, OR - 2,518+/- acre ranch located at the base of the Elkhorn Mountains. 11,000+/- sq ft custom built timber frame home with guest quarters and outbuildings. Elk, deer and turkey hunting, and stocked fishing ponds. **REDUCED TO \$6,500,000 CP#00217**
UMATILLA COUNTY, PENDLETON, OR - 737+/- deeded ac of which 549 ac are irrigated under center pivots. 115 ac dryland crop enrolled in CRP and 62 ac rangeland. Main home and outbuildings. Deer and bird hunting. Broker owned. **\$4,500,000 CP#01316**
UNION COUNTY, MEDICAL SPRINGS, OR - 5,350 contiguous ac timber parcel inside a larger 9,560 ac grazing area w/ additional 2,400 grazing ac negotiable for lease from seller. Ponds and springs. LOP tags for deer and elk. **\$3,445,000 CP#02514**
WALLOWA COUNTY, ENTERPRISE, OR - Off-grid, self-sufficient 5,386+/- sq. ft. home on canyon rim overlooking 861+/- acres and 3+/- miles of deeded river frontage. Bordered by the Wenaha Wildlife Area. Fishing and hunting within the property. This property has Wi-Fi. **\$2,900,000.00 CP#02417**
BAKER COUNTY, BAKER CITY, OR - 559.09 ac with house, barn and hay shed. 547.9 ac of water rights. Wheel line and flood irrigation. **\$2,300,000 CP#00317**
BAKER COUNTY, BAKER CITY, OR - Keating Valley 425 ac irrigated hay/pasture ranch. 360 ac Powder River water rights. 8 Tower pivot. 196 ac irr along river. Remodeled home. Shop w/working facilities. 1 mo BLM permit out the gate. 18 miles from Baker City. **\$2,300,000 CP#00617**

579 Acreage

GILLIAM COUNTY, CONDON, OR - 2,248 total acres. Excellent deer hunting, with upland birds and elk. East 30 Mile Creek runs through property. 750 acres of CRP with 4 years remaining on contract, 407 acres tillable, and 1091 acres of range. **\$1,750,000.00 CP#01917**
DOUGLAS COUNTY, CANYONVILLE, OR - South Umpqua River Ranch has river frontage and 618.17 ac with 142 ac irrigated cropland/pivot and hillside pasture. 5 ac / 2 homesites, feeder barns, hay barns, milk parlor and shops/storage. Water rights. **\$1,700,000 CP#00517**
UMATILLA COUNTY, HERMISTON, OR - 38.5 acre small scale, full operation facility. Shop, pivot irrigated fields, small feed lot, corral system, pastures, and a 2,400 sq. ft. custom built home. **\$1,500,000 CP#01117**
UMATILLA COUNTY, PILOT ROCK, OR - 728+/- deeded acres, 2,712 sq. ft. home, hunting cabin, working corrals, ponds fed by springs and surface runoff, rock pits, and a fossil bed. 2 LOP tags. **\$1,500,000.00 CP#01817**
BAKER COUNTY, KEATING, OR - 262 ac. Nice home, additional living quarters, shop, irrigated pasture, 1 mile of Powder River frontage. 127 ac water right, 2.5 ac pond. **\$1,399,000 CP#00416**
GRANT COUNTY, MT. VERNON, OR - 464.03 total acres. 55 acres of pasture, 330 acres planted to spring barley and alfalfa. 8 springs located throughout. 2015 Marlette Home with 3 bedrooms, 2 bath, office, and carport. **\$1,350,000 CP#02217**
GILLIAM COUNTY, CONDON, OR - 1,976.64 total ac. Deer, elk, and upland birds. Currently 837.74 ac of range, 984.96 ac of dryland crop, and 153.94 ac under CRP contract. Home with bunkhouse and outbuildings. **\$1,335,430 CP#02716**
UMATILLA COUNTY, Pendleton OR-1,508.17 ac on Stage Gulch Road, 1,494.52 ac tillable. Area historic yield of 50-55 bushels per ac. Good gravel road access. Includes residence. **\$1,302,340.00 CP#00516**
MORROW COUNTY, HEPNER, OR - 1,258 ac. Custom 3,400 sq. ft. log home. Two year-round creeks, bunkhouse, barn/shop and shop. Completely fenced and cross fenced. **\$1,300,000 CP#02617**
MORROW COUNTY, LEXINGTON, OR - 260 +/- ac equine facility which includes 65 ac irrigated lands, 261 ac CRP, 3,349 SF home, and complete horse facilities. Additional 225 ac water rights. Turn-key operation. **REDUCED TO \$1,200,000 CP#00616**
WHEELER COUNTY, MITCHELL, OR - 1,475 total ac of timber and range. Bridge Creek, seasonal creeks and springs, elk and mule deer. **\$1,143,125 CP#03415**

579 Acreage

BAKER COUNTY, HEREFORD, OR - 1,560 ac. Perennial streams, springs, timber, corrals. Excellent hunting. 3 LOP tags. **\$934,440 CP#02915**
UMATILLA COUNTY, PENDLETON, OR - 1402 ac., 1288 ac. expired CRP. 45 bu. average historical wheat production. Suitable for pasture and/or renewed wheat rotation. Good ROI. **\$865,900 CP#00417**
BAKER COUNTY, KEATING, OR - 1,312 ac timber parcel with mountain pasture. Balm Creek Reservoir. Stream and springs. LOP tags. Located adjacent to Wallowa Whitman National Forest. **\$799,000 CP#00714**
GILLIAM COUNTY, CONDON, OR - 1,398.18 total ac. CRP 108.01 ac, 784.24 ac of range and 505.93 ac currently seeded to wheat. No improvements. Great deer, elk, and Chukar hunting. **\$700,491 CP#02616**
BENTON COUNTY, KENNEWICK, WA - 6.29 ac with an indoor arena, horse barn, shop, with a new 2,254 square foot home. **\$625,000 CP#02916**
MALHEUR COUNTY, ONTARIO, OR - 115 ac, 66 ac irrigated. Pond, 2,500 sq. ft. home, and outbuildings. Wildlife, views, 6 miles from Ontario. **\$550,000 CP#01915**
BAKER COUNTY, HAINES, OR - 88.98 ac. nestled at the base of the Elkhorn Mountains. Main house, several outbuildings, hay/livestock barn and cattle working facility. Irrigated grass pasture. **\$549,000 CP#03116**
GRANT COUNTY, JOHN DAY, OR - 168.6 acres. 4 irrigated ac. fenced into 4 pastures. Home, shop, horse barn and shed, riding arena. Abundant with wildlife and excellent shed antler hunting. **\$525,000 CP#01017**
UMATILLA COUNTY, WESTON, OR - Investment opportunity. 102 +/- forested ac, 65 ac zoned FR allows development of 5 ac tracts. Power and well. Wildlife. **\$525,000 CP#02416**
UNION COUNTY, UNION, OR - 325.97 +/- ac. Timber parcel with 1/2 mile of Catherine Creek. 1 mm BF timber per 2010 cruise. Adjacent to USFS. Downstream from wilderness access

579 Acreage

The Whitney Land Co.
541-278-4444
101 S.E. 3rd | P.O. Box 1614, Pendleton, OR 97801
www.whitneylandcompany.com

- Jim Whitney, CCIM/Owner/Principal Broker
- Todd Longgood, Owner/Broker
- Gary Jellum, Broker
- Timothy "Scott" Coe, Broker
- Blake Bloomer, Broker
- Travis Knowles, Broker
- Christopher Stuvland, Broker

579 Acreage

area. 11 mi. south of Union. \$499,000 CP#02614
UMATILLA COUNTY, PILOT ROCK, OR - 76 +/- deeded ac / East Birch Creek running through the property. 63.3 acres containing water rights. Irrigated with 3 wheel lines & sub-irrigation. 40'x46' metal shop, equipment yard and 2 wells. Buildable lot within the city limits. **\$475,000 #CP#01517**
GILLIAM COUNTY, CONDON, OR - 939.75 total ac. Property consisting of 612.27 ac of range, 229.52 ac currently in wheat production, and 97.96 ac of CRP. Abundant deer, upland birds, occasional elk. **\$385,979 CP#02516**
UMATILLA COUNTY, PENDLETON, OR - 11.6 acres of dryland pasture, 7 miles NW of Pendleton. 3 bedroom, 1 bath home with laundry area and deck. Large shop with multiple large overhead doors and living quarters. **\$385,000 CP#02817**
UMATILLA COUNTY, MILTON-FREEWATER, OREGON - 287.30 ac with 143.09 ac in CRP. Multiple developed springs, buildable home site, LOP tags for Walla Walla Unit. **\$350,000.00 CP#01617**
UMATILLA COUNTY, PENDLETON, OR - Development potential 76.37 ac parcel. Zoned to allow the creation of 4ea nice ac lots with 40+ ac of river bottom remaining for recreation. **\$350,000 CP#02415**
UMATILLA COUNTY, PENDLETON, OR - Dryland wheat/CRP farm, Missouri Gulch. 394.73 acres northwest of Pendleton. 172 ac. enrolled CRP through 2022 and 220 ac. in production. 2017-82 bushel crop ac. **REDUCED TO \$335,525 CP#02914**
MORROW COUNTY, ECHO, OR - CRP income property, 186.9 ac of land with 157.7 ac of CRP, power and well. The balance of the property is range pasture. **\$295,000 #CP03515**
UNION COUNTY, UNION, OR - Buildable 80 +/- ac near Tollgate and the Spout Springs Ski Resort on the breaks of Lookingglass Creek. Bordered on 2 sides by Umatilla National Forest. **\$290,000 CP#02316**
UMATILLA COUNTY, PENDLETON, OREGON - 316.32 acres at the junction of Stage Gulch and Simpson Road in dryland wheat production. In 2017, the Seller produced 97 bushels per acre. **\$268,872 CP#02917**
BAKER COUNTY, BAKER CITY, OR - 230 +/- acres timber parcel located between Rock Creek and Muddy Creek. Adjacent to ODWF area at the base