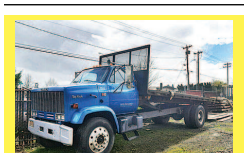


210 Trucks

1987 International Cab-over: wrecked, \$2500 OBO. Scio, OR. 503-930-2738



1998 Freightliner FLD: Detroit 60, 470 hp, 10 speed, air bags, PS, air condition, cruise, \$6750. The Equipment Center Inc. Portland, OR. 503-285-7606



1984 GMC Top Kick: CLEAN title, Runs/ drives, Working dump bed, \$7,200 OBO. Portland, OR. Call/ text Dan 503-481-2616



1999 INTERNATIONAL 9100 FUEL DELIVERY TRUCK: Cat power, 9 speed over drive, tandem rears, 4 compartments, 2 reels, very nice, \$19,500. Napavine, WA. 800-622-5170

Capital Press Ag Weekly • OnlyAG. "We get a lot of response from our ad. Thank You!" Andy Heuberger Freres Lumber Co.

210 Trucks



2000 Ford F650: Almost new tires, medium duty 7.3 diesel, manual, 88,000 miles, air condition, 16' bed will fit chassis, \$9,500. Milwaukie, OR. Call/ text 503-803-4031



1990 International Harvester 7100, single axle tractor, DT466 engine, Fuller 6052A transmission, Holland FW6700-16B air bag and wet kit, excellent condition, \$13,500 OBO. Othello, WA. 509-989-2583



2007 International 4300 Flatbed, Non CDL, DT466 260,000 miles, automatic, 20'x96' bed, \$17,900. Emerald Truck Sales, Tacoma, WA. 98445. 253-304-2212 emeraldtrucksales@gmail.com

210 Trucks



2007 International 8600 3-Axle Day Cab, Cummins ISM engine, 10 spd, PS, AC, cruise control, engine, \$19,500



2007 International 8600 3-Axle Day Cab, Cummins ISM engine, 10 spd, PS, AC, cruise control, engine, \$19,500



2005 Peterbilt 335 Tandem Axle Cab & Chassis, Cummins, ISC engine, 10 spd, air ride Suspension, 26' of frame, \$19,500



2014 Peterbilt 386 Day Cab, Cummins ISX, engine brake, 13 spd, PS, AC, cruise control, Very Nice Truck \$47,500



2003 Mack RDS 4-axle, 24' Flatbed, PS, AC, cruise control, 18,000 lb. front axle camel back suspension, low miles, \$24,500



2007 International 8600, 3 Axle, Day Cab, Cummins, Engine Brake, PS, AC, Super Low Miles, \$32,500

210 Trucks



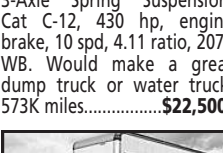
2012 Freightliner Cascadia, 3-axle day cab, Series 60 Detroit DD-13 engine brake, 10 spd., air ride suspension, PS, AC, cruise, air slide 5th wheel, \$28,500



2005 Freightliner FL112 3-Axle Day Cab, MBE# 4000, 10 spd, 40K lb rears, 165" WB, PS, AC, cruise control, engine brake, Super clean & low miles - 138,030 miles, \$25,500



2010 International 4400 Tandem Axle, Automatic, PS, AC, DT-466, Cruise Control, \$29,500

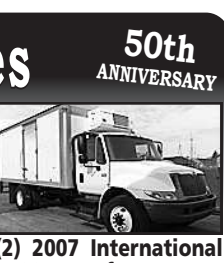


2001 Peterbilt 385, 3-Axle Spring Suspension, Cat C-12, 430 hp, engine brake, 10 spd, 4.11 ratio, 207" WB. Would make a great dump truck or water truck, 573K miles, \$22,500



2004 Freightliner Columbia 3-Axle Day Cab Series 60, 14L Detroit, 10 speed, 179" wheel base, engine brake, PS, A/C, cruise control, nice truck, \$13,500

210 Trucks



(2) 2007 International 4400 Reeper, DT-466, 6 spd transmission, \$16,500



2006 International 4400 Cab & Chassis, DT-466, 6 speed, \$16,500



2005 Peterbilt 379 Tandem Axle, Cummins ISX-450, 10 spd, 48" sleeper, air ride, PS, AC, engine brake, 240" WB, \$26,500



2008 FORD F-750, Automatic, Non-CDL, diesel, cab and chassis, fresh rebuilt engine with warranty. Would accept a 24' bed or box, PS, AC, cruise control, low miles, \$22,500



2011 Freightliner single axle, Allison automatic transmission, Series 60 Detroit DD-13, air ride, PS, AC, cruise control, engine brake, Low miles, super clean truck, \$32,500

1-800-451-0012 (503) 266-5886 FAX (503) 266-6903 LOVELLTRUCKSALES.COM 680 SW 1st (Hwy 99 East) Canby, OR

CAPITAL PRESS CLASSIFIED ADS 1-800-882-6789 www.capitalpress.com • OR ONLINE 24/7 365

POWER YOUR REGIONAL COMMERCIAL DEALER FOR NEW AND USED We have New and Pre-Owned Commercial Vehicles Contact us today to see what we have waiting for you! CALL JIM OR PHIL 1-844-421-5667 POWER FLEET - COMMERCIAL Email: fleet@powerautogroup.com • www.powerautogroup.com

TOP 6 MYTHS 1. "You can't get breast cancer if it doesn't run in your family." False: More than 85% of women have no history of the disease. 2. "You will definitely get breast cancer if it runs in your family." False: Many times, cancer runs in the family because of similar lifestyle habits... 3. "You don't need mammograms after menopause." False: 2 out of 3 invasive breast cancers are found in women age 55 or older... 4. "Men can't get breast cancer." False: More than 2,000 men are diagnosed with breast cancer every year... 5. "Surgery and needle biopsies can cause breast cancer to spread." False: Needle biopsies to diagnose breast cancer do not cause cancer cells to spread... 6. "There is nothing you can do to lower your risk." False: While you can't change certain risk factors... Donate to "Paint the Paper Pink" - 25% of the proceeds go to: MAKING STRIDES Against Breast Cancer Capital Press The West's Ag Weekly

KENWORTH T800 4-AXLE CHASSIS



Your Choice \$55,000 THREE TRUCKS FOR SALE Cummins ISX engines, 18-spd. trans. (RTLO18918B), single spd. Eaton rear-ends 4:10 or 4:11 gears w/locker, HENDRICKSON HAUL-MAX WALKING BEAM SUSP. #10 R087304 2005, D46-170 hp rears, 252" WB, 475 hp, \$55,000 #51 R892651 2002, DSP-463P rears, 251"WB, 475 hp, \$55,000 #99 R054031 2004, DSP-463P rears, 250" WB, 475hp, \$55,000

CLEAN AND IN EXCELLENCE SHAPE! MAINTENANCE RECORDS - REGULAR OIL SAMPLES For more info: www.irelandtrucking.com Thomas H. IRELAND INCORPORATED Call Charles Ireland 541-863-1501 Myrtle Creek, OR

CLASS 8 TRUCKS 509-534-9088 • SPOKANE, WA Answering machine after hours



(3) 2007 IH 4300 DT466, Allison Auto, 16' insulated box, or cab & chassis, PTO can be added for additional cost. Clean! \$19,900

DID YOU KNOW WE RENT TRAILERS? Flatbeds & Stepdecks Reefer Vans • Dry Vans • Grain Hoppers • Storage Vans Day, Week or Monthly Rates Please call for Availability and Pricing Subject to OAC

(2) 2001 FREIGHTLINER FL70 Automatic OD, ISC Cummins, 285 HP, Single Axle spring, 4.89 Ratio; 11R22.5 on steel, 150" WB. Exceptionally clean!!

WE HAVE STORAGE TRAILERS 28' - 53' Lengths Available Prices Starting at \$1,800

1997 KENWORTH T800 N14, 525 hp, 18 speed, drop axle, locker. CALL

FREIGHTLINER CAT powered & jakes 10 spd, A/C ready to go, PTO ready. Will take 20' bed. Drop axle will take you to...54,000 gross. NO emissions.

NEWBERG Ford COMMERCIAL SALES GUARANTEED BEST SERVICE & PRICING IN THE PACIFIC NW Call 503-312-4006

2017 T250 Medium Roof 148" Transit MSRP \$36,890 - Our Discount \$2,916 - Rebate \$1,421 - Uplift Rebate\* \$3,500 #A68200 Your Price: \$31,969

2017 F-350 11' Service Body MSRP \$59,655 - Our Discount \$3,681 - Rebate \$1,750 - Uplift Rebate\* \$1,000 #B22784 Your Price: \$50,719 - Ford Credit Bonus Cash\*\* \$750 Your Price after additional incentives: \$49,969

2017 Transit Connect MSRP \$25,175 - Our Discount \$2,108 - Rebate \$2,100 #312300 Your Price: \$20,969

2017 Ford F-150 4x4 8' Pickup MSRP \$34,055 - Our Discount \$1,586 - Rebate \$3,500 #D43836 Your Price: \$28,969

2015 F-150 SuperCrew MSRP \$38,065 - Our Discount \$3,046 - Rebate \$4,050 #C31984 Your Price: \$30,969

2017 Transit T350 High Roof KUV MSRP \$52,150 - Our Discount \$3,681 - Rebate \$3,500 - Uplift Rebate\* \$1,000 #B19073 Your Price: \$43,969

2017 F-250 Service Truck MSRP \$50,260 - Our Discount \$4,541 - Rebate \$1,000 - Uplift Rebate\* \$750 #C15341 Your Price: \$43,969

2016 F-550 12' Flatbed MSRP \$66,805 - Our Discount \$12,406 - Uplift Rebate\* \$1,000 #C15824 Your Price: \$53,969

2017 F-350 11' Service Truck MSRP \$59,655 - Our Discount \$3,681 - Rebate \$1,750 - Uplift Rebate\* \$1,000 #B22784 Your Price: \$50,719 - Ford Credit Bonus Cash\*\* \$750 Your Price after additional incentives: \$49,969

2017 F-550 Crew Cab V-10 for 11'12' Body MSRP \$52,660 - Our Discount \$3,681 - Rebate \$2,250 - Uplift Rebate\* \$1,000 #B25033 Your Price: \$48,719 - Ford Credit Bonus Cash\*\* \$750 Your Price after additional incentives: \$47,969

2017 Transit T350 12' Box Van MSRP \$44,665 - Our Discount \$2,096 - Rebate \$3,500 - Uplift Rebate\* \$1,000 #B12733 Your Price: \$37,969

2017 F-450 11' Service Body MSRP \$68,930 - Our Discount \$5,461 - Rebate \$1,750 - Uplift Rebate\* \$1,000 #C38872 Your Price: \$60,719 - Ford Credit Bonus Cash\*\* \$750 Your Price after additional incentives: \$59,969

2017 Ford F-250 4x4 8' Pickup MSRP \$37,785 - Our Discount \$3,715 - Rebate \$1,750 - Uplift Rebate\* \$1,000 #D42967 Your Price: \$33,719 - Ford Credit Bonus Cash\*\* \$750 Your Price after additional incentives: \$32,969

2017 F-550 CC 19.5 GVW 12' Landscaper MSRP \$74,485 - Our Discount \$4,016 - Rebate \$1,750 - Uplift Rebate\* \$1,000 #D42967 Your Price: \$67,719 - Ford Credit Bonus Cash\*\* \$750 Your Price after additional incentives: \$66,969

2017 F-350 12' Contractor MSRP \$61,955 - Our Discount \$4,486 - Rebate \$1,750 - Uplift Rebate\* \$1,000 #D58760 Your Price: \$54,719 - Ford Credit Bonus Cash\*\* \$750 Your Price after additional incentives: \$53,969

Dale E. Sykes Commercial Sales Manager Available 24/7 at 503-312-4006 dale@newbergford.com NEWBERG Ford COMMERCIAL SALES

visit newbergfordfleet.com 503-312-4006 3900 Portland Rd. (99W)