

1250 Cattle-Beef

Grid Maker: (12) 2 year old Charolais Bulls. (3) 2 year old Angus Bulls. (8) Charolais Yearling Bulls. Sacrifice. Junction City, OR. 541-998-2429

Herd Reduction: bred cow calf (out of TenX son) pairs, bred/ open heifers. Rochester, WA. 360-827-1309

Hereford/ Limousin Cross Feeder Steers: 650 to 800 lbs. Wilsonville, OR. 503-781-8570

150 HEAD HERD DISPERSAL
150 head good desert cattle, all running age, bred February-April calving. (25) second calf cows; (35) 3rd calf cows; (50) full mouth, and (40) broken mouth. Selling truck loads only. Will sell all for \$1350/ head. Call for individual load pricing. Silver Lake, OR. 541-233-6275

(80) Salers Bulls: All ages from yearlings to 2 year olds. Red and Black calving ease polled bulls developed on our eastern Oregon ranch for 36 years. Quiet temperament, delivery available. Flying T Ranch Sprague River, OR. 541-533-2416
cattle@flyingtsalers.com

1-800-238-2934 Yearling Black Angus Bulls: Upward, Aberdeen, Final Answer genetics. Semen tested, virgin, delivery available, starting at \$2500. Rolfe Angus Acres, Grass Valley, OR.



Mastel Family Murray Greys: Grass fed, cows, heifers and bulls. Roseburg, OR. 541-679-0677

Mobile Farm Slaughter Truck: fully equipped, ready to operate, \$11,900. Battle Ground, WA. Terry 360-687-5225

PEEK EFFICIENCY- more beef production per acre. Low line and moderator cattle, perfect for small acreage. Near Lewiston, ID. 208-790-4900

Polled Hereford Bulls: Top Quality, lots of muscle and testicle, halter broke, ready for work. Also cow calf pairs. Can deliver. Vollstedt Farms, Albany, OR. 541-926-5640, 541-990-8038

Polled Hereford Herd Dispersal: most purebred with a few dairy crosses. Bulls, pairs, bred cows/ heifers. Aumsville, OR. 503-749-1861

Purebred Black Angus Heifers and Steers: yearlings to long yearlings, \$800-\$1100. Newberg, OR. 503-537-4133

Purebred Charolais Bulls: coming 2 year olds, docile. Asking \$1800 OBO. Shedd, OR. 541-224-3167

Purebred Charolais Long Yearling Bulls: Brownsville, OR. 541-466-3377 or 541-466-3187

Registered Black Angus Bulls: Approximately 18 months. Low birth weights, great dispositions. Reedsport, OR. 541-271-4940.



Registered Polled Shorthorn: (2) bred heifers, (3) heifer calves. Dallas, OR. 503-704-2408 no texts

Shorthorn Bulls: March-April Yearlings. Selected for length, width, depth and muscling. Mothers sound, thick, calm, good milk. Good carcass data. Coulee-City, WA. Call 509-632-8709, 509-683-3272

Looking for CATTLE RANCHES?
Go to Class. 356
Capital Press
The West's Ag Weekly
www.capitalpress.com
1250-1-52-4/#13

1280 Livestock Equipment



2016 FEED MIXER TRUCK
Schuler MS725 twin auger mixer. 2004 International truck, tandem axle, Allison automatic, two speed gear reducer, double frame. Used 4 months before closing feedlot, \$100,000. Scappoose, OR. Kyle 503-522-7168

Livestock Panels: 16' (6) rail, (3) brace, \$116 each. 12' panels, (6) rail, (2) brace, \$93. Bow gates, all lengths and sizes. These panels are new Green color, hundreds available. **Heavy 16' Feeder Panels,** \$300 each. La Grande, OR. 541-805-9279, 541-963-6258

1380 Irrigation Equipment

Your Leading Source for Irrigation Supplies
HPs Pipe & Supply
• Drip Irrigation • Filtration • Design
598 Baseline, Cornelius, OR 97113
Phone (503) 357-4217
www.hpspipe.com
rickw@hpspipe.com

1280 Livestock Equipment

Bale Barn Feeders In Stock: horses or cattle. NW Farm Supply, Hermiston, OR. 800-801-5650 or Mike 541-561-6047

Heavy Duty TECO Cattle Squeeze Chute: Roseburg, OR. 541-672-2829



Powder River Hydraulic Electric Cattle Chute: generator or hard wired, \$6500. Dixon, CA. 707-678-9430

Silencer Hydraulic Chutes: Luco hydraulic chutes. Express portable corrals. Stampede tubs and alleys. All in stock! NW Farm Supply, Hermiston, OR. Call Mike 541-561-6047

1310 Dairy Eq. & Supplies

2004 Mueller Milk Silo: 30,000 gallons, \$69,000. Albany, OR. Call or text for pictures 503-580-0423



Complete Double 6 Milk Parlor: with indexing, RoKa take off, \$7000 or offer. Astoria, OR. 503-741-6523

Kiln Dried Shavings: truck-load/ minimum 18 unit load, Forest Grove, OR. 503-849-0216

Polydome Calf Nursery: Hutches available for various climates. Western Polydome, Inc. Monroe, WA. 800-822-5837

SIGN UP TODAY FOR FREE WEEKLY DAIRY E-NEWSLETTER:
access.capitalpress.com/newsletter.php

1320 Tanks & Storage

(2) 40' HiCube Storage Containers: excellent condition, \$2594.40 each. Mount Vernon, WA. 360-424-9172

2000 Gallon Farm Fuel Storage: elevated stand with hoses, filters and nozzles. Lind, WA. 509-677-3233



2000 Gallon single wall fuel tanks on skids, \$1500 OBO. Scappoose, OR. 503-250-3455

2004 Mueller Milk Silo: 30,000 gallons, \$69,000. Albany, OR. Call or text for pictures 503-580-0423

5000 Gallon DW Tank, 5000 Gallon DW 2 compartment tank (2500/2500), 4000 Gallon DW tank. Salem, OR. 503-881-9803



Water Storage Tanks: 2500 gallon Norwesco, black (reducing algae), ONLY \$895! Perry's Supply, North Bend, OR. 541-756-2051

1330 Generators



250 KW Trailer Mounted Generator: 16V, 71 Detroit, diesel, fresh engine, \$7750. McMinnville, OR. 503-550-7625



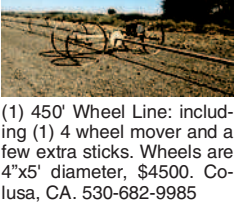
GENERATORS: Low hour takeouts, 20kW to 2000kW, diesel, propane, & natural gas. Cooperstown, ND. We ship nationwide. 701-371-9526 or 701-367-4305. www.abrahamindustrial.com

SOLAR SYSTEM BATTERIES: Marathon 12V 155AH AGM, 10/12 year battery life, 119 lbs each. Built in 2013/2014. \$150/ each. 6 or more, \$100/ each. Prineville, OR. Mike, 541-480-1722

1340 Shop Equipment & Tools

Pick-up Utility Box: Portable welder. Portable air compressor. 1984 Ford ¾ ton diesel 4x4. Scappoose, OR. 503-543-2477

1380 Irrigation Equipment



(1) 450' Wheel Line: including (1) 4 wheel mover and a few extra sticks. Wheels are 4"x5" diameter, \$4500. Colusa, CA. 530-682-9985

1380 Irrigation Equipment



(23) Pieces of 12" Ductile Iron Used Pipe at \$200 each. 68' of 36" diameter ductile iron pipe at \$30 per foot. Great for culverts. We will load, you haul. Newberg, OR. 503-932-2037

(75) Used Pivots: Engines, pumps. Garden Valley, ID. Call Mike at 208-420-1480 or see www.pivotsplus.com

1 Wheel Line: complete, \$1600. Prescott, WA 509-749-2361

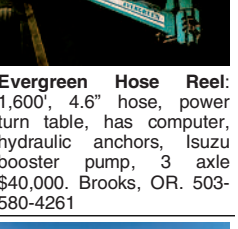
2", 3" and 4" Sprinkler Pipe: 30' and 40' lengths. 5000 in stock. Located in California. **We Buy and Sell Irrigation Equipment, Pickup and Delivery.** Call 559-779-4798 or 806-637-9523

6 Wheel Lines: Thunderbirds, good condition, motivated seller. Bruneau, ID. Call Bruce 208-845-2201, text 208-358-3014

6", 8" and 10" Mainline: 4" and 5" reconditioned side rolls. 30 available. Located in California. **We Buy and Sell Irrigation Equipment.** Pickup and Delivery. Call 559-779-4798 or 806-637-9523



Rainier Cherry/ Fruit Packing Line: all stainless steel, has a variety of uses, \$30,000 OBO. The Dalles, OR. 541-980-4594



JOHN DEERE 400A SKIDDER
Good old Girl! Lots of new parts, \$14,000 OBO. Alesia OR. 541-487-4564

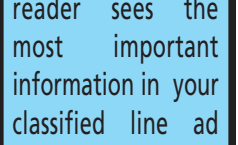
John Deere 690EL: log loader, low hour rotoc bearing, \$55,000. Myrtle Creek, OR. 541-863-6968

Older Machinery: Chippers, Vans, debarker, new rock blade, John Day, OR. 541-575-1525

1440 Sawmill Equipment
CASH FOR SAWMILLS: We buy Wood-Mizer, Mobile Dimension, Mighty Mite, and more. Portland, OR. Call 971-271-8070

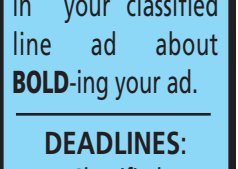


PUMP WITH SOLAR: Power any 3-phase pump with solar. Pump 70,000 gallons day with 3hp pump. On-grid, off-grid or hybrid systems available for irrigation, potable water and agricultural wells. Achieve payback in 1-2 years when replacing diesel. Incentives available. Sustainable Technologies 510-523-1122 www.sustech.cc



Evergreen Hose Reel: 1,600', 4.6" hose, power turn table, has computer, hydraulic anchors, Isuzu booster pump, 3 axle \$40,000. Brooks, OR. 503-580-4261

(23) Pieces of 12" Ductile Iron Used Pipe at \$200 each. 68' of 36" diameter ductile iron pipe at \$30 per foot. Great for culverts. We will load, you haul. Newberg, OR. 503-932-2037



1470 Heavy & Indust. Equip.

DEADLINES:
Classified Display Ads, Weds. @ 10AM
Classified Line Ads Weds. @ Noon
1-800-882-6789
Fax 503-370-4383
www.capitalpress.com
Capital Press
The West's Ag Weekly

1470 Heavy & Indust. Equip.

1470 Heavy & Indust. Equip.

NEW SCALES
Built • Delivered • Installed
Leased • Rental Scales



USED SCALES
Bought • Sold • Traded
Repaired • Rental Scales



WE HAUL!
• Building Supplies • Farm Equipment
• Construction Equipment • Heavy Equipment
• Granular Fertilizer • Grain/Wheat
888-393-1819 • www.riverbrooktrucking.com

1380 Irrigation Equipment

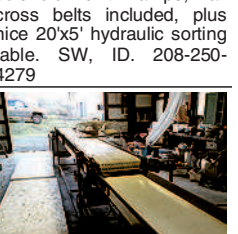
Pivots: Good, various lengths, all brands & late models. No rust. Plus some pivot parts, and buried wire. Call Keizer, OR. 503-881-3232, 503-390-3210

WHEEL LINE IRRIGATION
Selling 23 full sets of wheel line irrigation at \$4500/ set. Each set includes 32 pieces of 5" pipe, wheels, self levelers, hose and valve, good connector, mover with a good, running motor, end cap, and all joints. Photos upon request. Call Isidro for more info. Alturas, CA. 530-708-2199

Zimatic Pivots: (1) 7 tower with Boss panel, (2) 3 tower with Grow Smart panels. Star, ID. 208-941-2755

1390 Packing, Processing Eq.

Packing Line For Sale: 4 lane PSI optical color sorter/ sizer. OMS camera system, 22 drops with tray feeders, 16 bagging drops, recently upgraded chain and solenoid exit ramps, all cross belts included, plus nice 20'x5' hydraulic sorting table. SW, ID. 208-250-4279



Rainier Cherry/ Fruit Packing Line: all stainless steel, has a variety of uses, \$30,000 OBO. The Dalles, OR. 541-980-4594

1410 Logging Equipment



JOHN DEERE 400A SKIDDER
Good old Girl! Lots of new parts, \$14,000 OBO. Alesia OR. 541-487-4564

John Deere 690EL: log loader, low hour rotoc bearing, \$55,000. Myrtle Creek, OR. 541-863-6968

Older Machinery: Chippers, Vans, debarker, new rock blade, John Day, OR. 541-575-1525

1440 Sawmill Equipment
CASH FOR SAWMILLS: We buy Wood-Mizer, Mobile Dimension, Mighty Mite, and more. Portland, OR. Call 971-271-8070



2015 John Deere 318E Skid Steer: perfect condition, 110 hours, \$34,000 OBO. Canby, OR. 503-519-4667

Used Lift Trucks
Also New & Used Parts
All sizes, makes & prices
LIFT TRUCK SERVICE
888-890-1450
forkliftsales.com
Ellensburg, WA

1470 Heavy & Indust. Equip.



(23) Pieces of 12" Ductile Iron Used Pipe at \$200 each. 68' of 36" diameter ductile iron pipe at \$30 per foot. Great for culverts. We will load, you haul. Newberg, OR. 503-932-2037



1470 Heavy & Indust. Equip.

DEADLINES:
Classified Display Ads, Weds. @ 10AM
Classified Line Ads Weds. @ Noon
1-800-882-6789
Fax 503-370-4383
www.capitalpress.com
Capital Press
The West's Ag Weekly

1470 Heavy & Indust. Equip.

1470 Heavy & Indust. Equip.

NEW SCALES
Built • Delivered • Installed
Leased • Rental Scales



USED SCALES
Bought • Sold • Traded
Repaired • Rental Scales

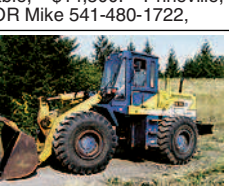


WE HAUL!
• Building Supplies • Farm Equipment
• Construction Equipment • Heavy Equipment
• Granular Fertilizer • Grain/Wheat
888-393-1819 • www.riverbrooktrucking.com

1470 Heavy & Indust. Equip.



125E Dresser Dozer: 4-in-1 loader bucket, sweeps, rock guards. Runs strong. Stops/starts/steers. Very dependable, \$14,500. Prineville, OR Mike 541-480-1722.

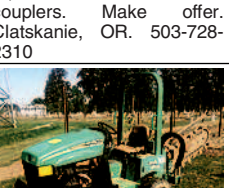


1991 Kobelco LK650: 3.5 yard bucket, smooth edge, good tires, tight machine, 153 hp, 31,500 lb. machine, \$25,000. Gaston, OR. 503-789-3726



1996 John Deere 6200: 640 self-leveling loader, 115 HP, two remotes, \$25,000. Naches, WA. 509-945-2452

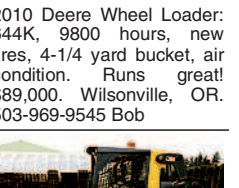
2", 3" and 4" Air Hose: new couplers. Make offer. Myrtle Clatskanie, OR. 503-728-2310



2005 RT40 Ditchwitch Trencher: 650 hours, 30000' on new dirt chain, \$13,500. Silverton, OR. 503-932-0766



2010 Deere Wheel Loader: 644K, 9800 hours, new tires, 4-1/4 yard bucket, air condition. Runs great! \$89,000. Wilsonville, OR. 503-969-9545 Bob



2015 John Deere 318E Skid Steer: perfect condition, 110 hours, \$34,000 OBO. Canby, OR. 503-519-4667

Reverse Osmosis Water Treatment Plant/ Leachate: Pumps, electrical, filters, tanks. Used very little, \$75,000 or trade (original cost \$3,000,000). Creswell, OR. 541-912-7807

Wanted: Caterpillar, Holt and Best Crawlers. Complete or parts. Please call Scott 503-829-4942

CASE INDUSTRIAL PARTS
We sell genuine, after market, and used CASE parts at discount prices nationwide. Call For Free Catalog.

CENTRAL EQUIPMENT AFTER MARKET & USED PARTS
Medford, OR
(888) 593-8749

163H GRADER
ALL WHEEL DRIVE WITH RIPPERS;
14,000 HOURS. SN 5AK00199
\$95,000 CALL 541-782-2201
Ask for Lindsay • Oakridge, Oregon



1470 Heavy & Indust. Equip.

1470 Heavy & Indust. Equip.

1470 Heavy & Indust. Equip.

1470 Heavy & Indust. Equip.

1470 Heavy & Indust. Equip.

1470 Heavy & Indust. Equip.

1470 Heavy & Indust. Equip.

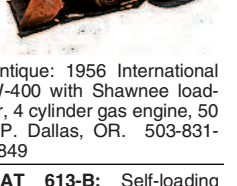
1470 Heavy & Indust. Equip.



250 KW Trailer Mounted Generator: 16V, 71 Detroit, diesel, fresh engine, \$7750. McMinnville, OR. 503-550-7625



631D and 633 Cat Scrapers: (3) available, \$28,000 each. Ontario, OR. Call Dale 541-212-6159



CAT 613-B: Self-loading scraper, good condition, \$29,500. **D-6 H U-dozer** with tilt and ripper, near new engine and hydraulic pump, \$86,500. Salem, OR. 503-362-3055

CAT D3B: SN#23Y1205, 6 way blade and winch, good undergear, \$18,500. Myrtle Creek, OR. 541-863-6968

CAT D6D: SN#4X09387, DI engine, ex-government, 6 way blade, Hyster free spool, W6F winch, excellent undergear, \$55,000. Myrtle Creek, OR. 541-863-6968



John Deere 210C 4 x 4 Skip Loader: hydraulic blade, 7' box scraper, 1 yard bucket, 7900 hours. Runs Great, \$24,000. Wilsonville, OR. 503-969-9545 Bob

Reverse Osmosis Water Treatment Plant/ Leachate: Pumps, electrical, filters, tanks. Used very little, \$75,000 or trade (original cost \$3,000,000). Creswell, OR. 541-912-7807

Wanted: Caterpillar, Holt and Best Crawlers. Complete or parts. Please call Scott 503-829-4942

CASE INDUSTRIAL PARTS
We sell genuine, after market, and used CASE parts at discount prices nationwide. Call For Free Catalog.

CENTRAL EQUIPMENT AFTER MARKET & USED PARTS
Medford, OR
(888) 593-8749

163H GRADER
ALL WHEEL DRIVE WITH RIPPERS;
14,000 HOURS. SN 5AK00199
\$95,000 CALL 541-782-2201
Ask for Lindsay • Oakridge, Oregon

