

**1250 Cattle-Beef**



Mastel Family Murray Greys: Grass fed, cows, heifers and bulls. Roseburg, OR. 541-679-0677

**Mobile Farm Slaughter Truck:** fully equipped, ready to operate, \$11,900. Battle Ground, WA. Terry 360-687-5225

**Opportunity to Own Excellent Quality Polled Hereford Cow/ Calf Pairs:** cows A/d to top Nation bull. Bred heifers, bulls. All gentle. Cox Herefords, Jefferson, OR. 541-327-2458

**PEEK EFFICIENCY-** more beef production per acre. Low line and moderator cattle, perfect for small acreage. Near Lewiston, ID. 208-790-4900

**Polled Hereford Bulls:** Top Quality, lots of muscle and testicle, halter broke, ready for work. Also cow calf pairs. Can deliver. Vollstedt Farms, Albany, OR. 541-926-5640, 541-990-8038

**Polled Hereford Herd Dispersal:** most purebred with a few dairy crosses. Bulls, pairs, bred cows/ heifers. Aumsville, OR. 503-749-1861

Purebred Charolais Bulls: coming 2 year olds, docile. Asking \$1800 OBO. Shedd, OR. 541-224-3167

Purebred Charolais Long Yearling Bulls: Brownsville, OR. 541-466-3377 or 541-466-3187

**Registered Black Angus Bulls:** Approximately 18 months. Low birth weights, great dispositions. Reedsport, OR. 541-271-4940.



**Registered Polled Short-horn Bred Heifers:** heifer calves and bull calves. Dallas, OR. 503-704-2408 no texts

**Short-horn Bulls:** March-April Yearlings, Selected for length, width, depth and muscling. Mothers sound, thick, calm, good milk. Good carcass data. Coulee-City, WA. Call 509-632-8709, 509-683-3272

**Looking for CATTLE RANCHES?**  
Go to Class. 356  
Capital Press  
www.capitalpress.com  
1250-1-52-4#13

**1250 Cattle-Beef**

Wanted: Pair of Miniature Zebu Cattle. Please leave message: 208-316-4522

**1280 Livestock Equipment**



**2016 FEED MIXER TRUCK** Schuler MS725 twin auger mixer. 2004 International truck, tandem axle, Allison automatic, two speed gear reducer, double frame. Used 4 months before closing feedlot, \$100,000. Scappoose, OR. Kyle 503-522-7168

**Bale Barn Feeders In Stock:** horses or cattle. NW Farm Supply, Hermiston, OR. 800-801-5650 or Mike 541-561-6047

Heavy Duty TECO Cattle Squeeze Chute. Roseburg, OR. 541-672-2829

**Livestock feeders, water troughs \$60 each.** White, black corded wool. Chicken feeders. Horse tack. English saddle, \$200, western saddle \$50. Lots more. Walla Walla, WA. 509-529-9788

**Livestock Panels:** 16' (6) rail, (3) brace, \$116 each. 12' panels, (6) rail, (2) brace, \$93. Bow gates, all lengths and sizes. These panels are new Green color, hundreds available. **Heavy 16' Feeder Panels,** \$300 each. La Grande, OR. 541-805-9279, 541-963-6258



Powder River Hydraulic Electric Cattle Chute: generator or hard wired, \$6500. Dixon, CA. 707-678-9430

**1310 Dairy Eq. & Supplies**

2004 Mueller Milk Silo: 30,000 gallons, \$69,000. Albany, OR. Call or text for pictures 503-580-0423

**Kiln Dried Shavings:** truck-load/ minimum 18 unit load, Forest Grove, OR. 503-849-0216

**Polydome Calf Nursery:** Hutches available for various climates. Western Polydome, Inc. Monroe, WA. 800-822-5837

**SIGN UP TODAY FOR FREE WEEKLY DAIRY E-NEWSLETTER:** access.capitalpress.com/newsletter.php

**Used Dairy Equipment:** Plate cooler and Glycol unit, milk pump and various dairy equipment. Salem, OR. 503-551-1578

**1320 Tanks & Storage**

(2) 40' HiCube Storage Containers: excellent condition, \$2594.40 each. Mount Vernon, WA. 360-424-9172

**1250 Cattle-Beef**

**1320 Tanks & Storage**

2000 Gallon Farm Fuel Storage: elevated stand with hoses, filters and nozzles. Lind, WA. 509-677-3233



2000 Gallon single wall fuel tanks on skids, \$1500 OBO. Scappoose, OR. 503-250-3455

2004 Mueller Milk Silo: 30,000 gallons, \$69,000. Albany, OR. Call or text for pictures 503-580-0423



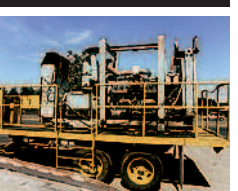
316 SS Dome Bottom Tanks: 650 gallon up to 6,000 gallon. Call for pricing. Hermiston, OR. 541-571-0514 email: 53hchull@gmail.com

5000 Gallon DW Tank. 5000 Gallon DW 2 compartment tank (2500/2500). 4000 Gallon DW tank. Salem, OR. 503-881-9803



Water Storage Tanks: 2500 gallon Norwesco, black (reducing algae), ONLY \$895! Perry's Supply. North Bend, OR. 541-756-2051

**1330 Generators**



250 KW Trailer Mounted Generator: 16V, 71 Detroit, diesel, fresh engine, \$7750. McMinnville, OR. 503-550-7625



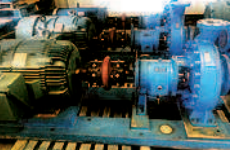
**GENERATORS:** Low hour takeouts, 20kW to 2000kW, diesel, propane, & natural gas. Cooperstown, ND. We ship nationwide. 701-371-9526 or 701-367-4305. www.abrahamindustrial.com

**SOLAR SYSTEM BATTERIES:** Marathon 12V 155AH AGM, 10/12 year battery life, 119 lbs each. Built in 2013/2014, \$150/ each. 6 or more, \$100/ each. Prineville, OR. Mike, 541-480-1722

**1380 Irrigation Equipment**



(1) 450' Wheel Line: including (1) 4 wheel mover and a few extra sticks. Wheels are 4"x5" diameter, \$4500. Colusa, CA. 530-682-9985



(12) 316 SS Gould Pumps: with 250 HP motor, excellent condition, \$14,950 each. Heriston, OR. 541-571-0514 email: 53hchull@gmail.com

(75) Used Pivots: Engines, pumps. Garden Valley, ID. Call Mike at 208-420-1480, or see www.pivotsplus.com

**1380 Irrigation Equipment**

1 Wheel Line: complete, \$1600. Prescott, WA 509-749-2361

**Zimmatic Pivots:** (1) 7 tower with Boss panel, (2) 3 tower with Grow Smart panels. Star, ID. 208-941-2755

**40 Lengths, 4" Gheen Pipes,** \$75 each, plus fittings. Trailer available. Monroe, OR. 541-321-9088, 541-914-2585

6", 8" and 10" Mainline: 4" and 5" reconditioned side rolls. 30 available. Located in California. **We Buy and Sell Irrigation Equipment.** Pickup and Delivery. Call 559-779-4798 or 806-637-9523



**Evergreen Hose Reel:** 1,600', 4.6" hose, power turn table, has computer, hydraulic anchors, Isuzu booster pump, 3 axle \$40,000. Brooks, OR. 503-580-4261

**Pivots:** Good, various lengths, all brands & late models. No rust. Plus some pivot parts, and buried wire. Call Keizer, OR. 503-881-3232, 503-390-3210



**PUMP WITH SOLAR:** Power any 3- phase pump with solar. Pump 70,000 gallons day with 3hp pump. On-grid, off-grid or hybrid systems available for irrigation, potable water and agricultural wells. Achieve payback in 1-2 years when replacing diesel. Incentives available. Sustainable Technologies 510-523-1122 www.sustech.cc

**WHEEL LINE IRRIGATION** Selling 23 full sets of wheel line irrigation at \$4500/ set. Each set includes 32 pieces of 5" pipe, wheels, self levelers, hose and valve, hose connector, mover with a good, running motor, end cap, and all joints. Photos upon request. Call Isidro for more info. Alturas, CA. 530-708-2199

**JOHN DEERE 400A SKIDDER** Good old Girl! Lots of new parts, \$14,000 OBO. Also OR. 541-487-4564

Older Machinery: Chippers, Vans, debarker, new rock blade, John Day, OR. 541-575-1525

**1440 Sawmill Equipment**  
**CASH FOR SAWMILLS:** We buy Wood-Mizer, Mobile Dimension, Mighty Mite, and more. Portland, OR. Call 971-271-8070.

**1450 Forklifts**  
2007 Yale GP360: 36,000 lb. capacity, 989 actual hours, 10' forks, hydraulic fork positioners, sideshift, 212" upright, 2-stage mast, solid pneumatics, same as Hyster HD model. Delivery available, \$105,000. Gaston, OR. 503-789-3726

**Used Lift Trucks**  
Also New & Used Parts All sizes, makes & prices  
**LIFT TRUCK SERVICE**  
888-890-1450  
forkliftsales.com  
Ellensburg, WA

**IRRIGATION EQUIPMENT BOUGHT. SOLD. RENTAL.**  
Design of Effluent Handling Systems - Gates, Valves & Aerators  
New & Used Parts.  
• Aluminum Pipe  
• Certa-lok  
• Siphon Tubes • HDPE  
• Sand Media Filters  
• Wheel Lines • Pumps

**PACIFIC SOUTHWEST IRRIGATION**  
Office: (209) 460-0450  
Fax: (209) 982-1832  
www.pacsouthwestirrig.com  
Carlos (209) 481-7677  
Jim (209) 986-0099  
1380-31-2-1#18

**1470 Heavy & Indust. Equip.**  
631D and 633 Cat Scrapers: (3) available, \$28,000 each. Ontario, OR. Call Dale 541-212-6159

**John Deere 210C 4 x 4 Skip Loader:** hydraulic blade, 7' box scraper, 1 yard bucket, 7900 hours. Runs Great, \$24,000. Wilsonville, OR. 503-969-9545 Bob

**1380 Irrigation Equipment**

2", 3" and 4" Sprinkler Pipe: 30' and 40' lengths. 5000 in stock. Located in California. **We Buy and Sell Irrigation Equipment.** Pickup and Delivery. Call 559-779-4798 or 806-637-9523

**1390 Packing, Processing Eq.**

Packing Line For Sale: 4 lane PSI optical color sorter/ sizer. OMS camera system, 22 drops with tray feeders, 16 bagging drops, recently upgraded chain and selenoid exit ramps, all cross belts included, plus nice 20x5 hydraulic sorting table. SW, ID. 208-250-4279



Rainier Cherry/ Fruit Packing Line: all stainless steel, has a variety of uses, \$30,000 OBO. The Dalles, OR. 541-980-4594

**1410 Logging Equipment**

**D4-7U LOGGING CAT:** Direct start, five roller, new tracks, hydraulic track adjustment, fresh engine, free spool winch, 70% undercarriage, \$12,000. Buxton, OR. 503-324-3305



1996 John Deere 6200: 640 self-leveling loader, 115 HP, two remotes, \$25,000. Naches, WA. 509-945-2453

2010 Deere Wheel Loader: 644K, 9800 hours, new tires, 4-1/4 yard bucket, air condition. Runs great! \$89,000. Wilsonville, OR. 503-969-9545 Bob



2015 John Deere 318E Skid Steer: perfect condition, 110 hours, \$34,000 OBO. Canby, OR. 503-519-4667

**CAPITAL PRESS CLASSIFIEDS GET RESULTS!**  
**NOW RENTING! CAT-D8T SU** w/3-shank mounted ripper  
**ATIMACHINERY.com**  
888-461-0625  
Five Points, CA

**CASE INDUSTRIAL PARTS**  
We sell genuine, after market, and used CASE parts at discount prices nationwide. Call For Free Catalog.  
**CENTRAL EQUIPMENT**  
AFTER MARKET & USED PARTS  
Medford, OR  
(888) 593-8749

**Quality Used EQUIPMENT & ATTACHMENTS**  
• INDUSTRIAL  
• COMMERCIAL  
Please visit our Website  
**www.amtractor.com**  
for a complete list of Machines and Attachments  
**American Tractor**  
Our Toll Free #  
888-499-8980  
Call Cameron Noble or Eric Hunt  
CENTRAL POINT, OR

**163H GRADER**  
ALL WHEEL DRIVE WITH RIPPERS;  
14,000 HOURS. SN 5AK00199  
\$95,000 CALL 541-782-2201  
Ask for Lindsay • Oakridge, Oregon



**503-544-3232 • 503-407-9062**  
"We Buy Equipment"

John Deere 330LC Hydraulic Thumb, 48" Digging Bucket. \$24,000.00  
Allis Chambers HD21B Dozer 14' U Blade w/ Single Shank Rear Ripper. \$10,000.00  
Komatsu D45-1 Dozer 7'6" 4 Way Blade Powershift Trans. \$10,000.00  
Broce Pavement Broom RJ300 Ex City Unit W/ Blade, Water System Enclosed Cab. \$22,500.00  
Komatsu PC200 Excavator Clean Up Bucket. \$29,500.00  
Komatsu 300-1 Wheel Loader Rebuilt Eng. Clean Unit. \$24,500.00  
Case 530 Wheel Tractor Rear PTO Front Broom. \$6,500.00  
Case 95XT Skidsteer Extra Pump For Mower or Grinder Non-Puncture Tires. \$10,500.00  
Kobelco SK220LC Excavator Thumb and Digging Bucket. \$22,500.00  
Kobelco Sk135 Excavator Thumb and Digging Bucket. Call  
Hyster C850A Smooth Drum Roller 84" Low Hour Unit. \$27,500.00  
2016 Almand Night Light Tower 3 Cylinder 4 Bulb 1250 Watt System. \$5,500.00  
1984 Trail EZ 20 Tonn Tilt Deck Trailer. \$8,500.00  
Hitachi 120 Excavator Thumb and Digging Bucket. \$23,500.00

**buzzardsequipment.net**

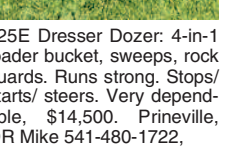
**1470 Heavy & Indust. Equip.**



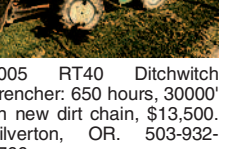
1991 Kobelco LK650: 3.5 yard bucket, smooth edge, good tires, tight machine, 153 hp, 31,500 lb. machine, \$25,000. Gaston, OR. 503-789-3726



125E Dresser Dozer: 4-in-1 loader bucket, sweeps, rock guards. Runs strong. Stops/starts/steers. Very dependable, \$14,500. Prineville, OR Mike 541-480-1722.



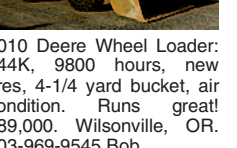
2005 RT40 Ditchwitch Trencher: 650 hours, 30000' on new dirt chain, \$13,500. Silverton, OR. 503-932-0766



2010 Deere Wheel Loader: 644K, 9800 hours, new tires, 4-1/4 yard bucket, air condition. Runs great! \$89,000. Wilsonville, OR. 503-969-9545 Bob



2015 John Deere 318E Skid Steer: perfect condition, 110 hours, \$34,000 OBO. Canby, OR. 503-519-4667



**SEATS w/Air Suspension \$1,025**  
**Combine Parts**  
JD 4010, 4020  
Clutch Kits \$715  
**A/C Components**



**FARMLAND Tractor Supply**  
Parts@Farmlandtractor.com

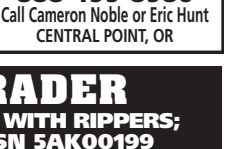
**COMBINE HEAVEN R.I.P.**  
Reasonable Implement Pricing  
See Our Combine Dance on YouTube



**RECENT ARRIVALS**  
(3) IH 2188 • IH 1688 4x4  
JD 8820 II  
JD 9610 • (2) JD 9600 HILLSIDES

JD 9650	STS TR 96
9610	TR 95
9600	TR 85
9500	TR 75
8820	TR 70
7720	IH
7700	2188
6622	1688
6620	1680
6602	1666
6600	1660
6600SH	1480
4400	1460
105	1440
95EB	915
95 Late	815
95 Hillside	715
	403

**LOTS OF TRACTORS AND IMPLEMENTS TOO!**  
**Nyssa Tractor & Implement**  
Celebrating 27 years in the agricultural machinery business.  
Our yard has 5 miles of road, with machinery on both sides.  
FREE TOURS GIVEN DAILY.  
Call Toll Free: (888) 372-4020  
www.nyssatractor.com  
sales@nyssatractor.com  
Nyssa, OR

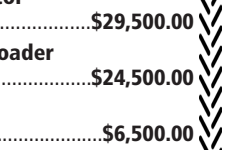


**NEW & USED OLIVER & CLETRAC**  
Crawler Parts Our Specialty  
**ZIMMERMAN OLIVER-CLETRAC**  
1450 Diamond Station Rd. • Ephrata, PA 17522  
**717-738-2573**  
Fax 717-733-3529  
www.olivercletrac.com

**BIG TRACTOR PARTS, INC.**  
~ GEARED FOR THE FUTURE ~  
**STEIGER TRACTOR SPECIALIST**  
1. We are your source for new & used Steiger drivetrain parts Series 1 - 9300 Series.  
2. We rebuild Spicer manual transmissions, Fuji power shift transmissions, dropboxes & axle with ONE YEAR WARRANTY!  
3. We now rebuild computer control boxes for Steiger tractors 1982-1999.  
**800-982-1769**  
www.bigtractorparts.com

**NEW, USED, AND REMAN PARTS**  
**TOLL FREE: 1-877-928-1646**  
FARMLAND • 32427 OLD HWY 34, TANGENT, OR 97389

**Reman Engines for Case/IH, John Deere, and Ford**



**RECENT ARRIVALS**  
(3) IH 2188 • IH 1688 4x4  
JD 8820 II  
JD 9610 • (2) JD 9600 HILLSIDES

JD 9650	STS TR 96
9610	TR 95
9600	TR 85
9500	TR 75
8820	TR 70
7720	IH
7700	2188
6622	1688
6620	1680
6602	1666
6600	1660
6600SH	1480
4400	1460
105	1440
95EB	915
95 Late	815
95 Hillside	715
	403

**LOTS OF TRACTORS AND IMPLEMENTS TOO!**  
**Nyssa Tractor & Implement**  
Celebrating 27 years in the agricultural machinery business.  
Our yard has 5 miles of road, with machinery on both sides.  
FREE TOURS GIVEN DAILY.  
Call Toll Free: (888) 372-4020  
www.nyssatractor.com  
sales@nyssatractor.com  
Nyssa, OR

**MARKET SCHEDULE**  
• August 12: Livestock Sale  
• August 13: Horse Sale  
• August 19: Livestock Sale

**Monthly Market Report for 8/5/2017**  
Total Head Count: 260  
Top cows high dressers: \$65.00-\$75.50 Top cows avg.: \$71.60  
Top bulls high dressers: \$82.00-\$95.50

Choice Steers:	Choice Heifers:
med. to Irge frame #1 & #2's	med. to Irge frame #1 & #2's
300-400 lbs \$100.00-\$129.00	300-400 lbs NT
400-500 lbs no test	400-500 lbs \$105.50-\$120.00
500-600 lbs \$100.00-\$123.50	500-600 lbs \$90.00-\$101.00
600-700 lbs \$100.00-\$120.00	600-700 lbs \$100.00-\$114.50
700-800 lbs \$100.00-\$124.00	700-800 lbs \$100.00-\$116.50
800-900 lbs \$100.00-\$118.00	800 & up \$92.00-\$110.00

**EUGENE LIVESTOCK AUCTION, INC.**  
92380 Hwy 909 So. • Junction City, OR 97448  
800-288-6217 • 541-998-3353  
Bruce Anderson, owner • Cell 541-912-2940  
www.eugenelivestock.com  
REGULAR AUCTIONS EVERY SATURDAY AT 11:30 AM  
HORSE SALE 2<sup>ND</sup> SUNDAY OF EVERY MONTH AT 12 NOON

**SAVE \$750 ON ARROW CATTLEQUIP 8600 CHUTE**

**Q-CATCH**  
Reg. Price \$7650  
Less Rebate \$