

**1250 Cattle-Beef**

(1,000) Head Feed Lot: heifer raising, feeders, cows. 20 cents yarding+feed. Placement of more than 100 head, free yarding. Albany, Oregon. 503-871-9114



(21) Yearling Angus replacement heifers. (12) yearling Angus steers. Excellent, well bred commercial cattle, 100% grass fed, 600-1000 lbs, \$800-\$1500. Nehalem, OR. karensbeef@gmail.com 503-322-0265

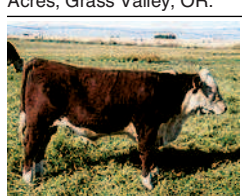
(30) Fancy Black and Red Angus 11 Month Old Heifers: approximately 825 pounds. Thornton Ranch, Yamhill, OR. 503-852-7390

(30) Yearling and 2 Year Old Bulls: Noah's Angus Ranch, Angus Cattle Since 1955. Cambridge, ID. 208-257-3686. www.noahsangusranch.com

(80) Head of Registered Heifers: Noah's Angus Ranch, Angus cattle since 1955. Cambridge, ID. 208-257-3686 www.noahsangusranch.com

(80) Salers Bulls: All ages from yearlings to 2 year olds. Red and Black calving ease polled bulls developed on our eastern Oregon ranch for 36 years. Quiet temperament, delivery available. Flying T Ranch Sprague River, OR. 541-533-2416 cattle@flyingtalsers.com

1-800-238-2934 Yearling Black Angus Bulls: Upward, Aberdeen, Final Answer genetics. Semen tested, virgin, delivery available, starting at \$2500. Rolfe Angus Acres, Grass Valley, OR.



15-month Polled Hereford Bulls: NJW breeding, low birth weight calves, very gentle, \$1600. Will Deliver. Quincy, WA. 509-785-6291

3 YEAR OLD RED ANGUS COWS: with 300 pound Black Angus calves at side bred back to Black Angus bull, \$2250 each. Creswell, OR. 541-844-4489

5 Year Old Registered Angus Heifer Bull: very docile. Scio, OR. 503-913-3865

Angus Polled & Horned Hereford Bulls And Heifers: calving ease with growth, semen and performance tested. Potter Valley, CA. 707-272-9071

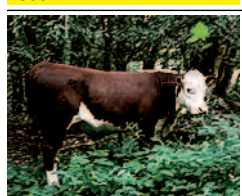
Angus/ Limousin Cross Bulls: easy calving, fast gain. Elgin, OR. 541-437-8181

BLACK ANGUS BULLS: Quality, Purebred, 2 years, gentle disposition, best of care, delivery available. Eugene, OR. 541-484-9054

BLACK ANGUS HEIFERS: 16 months old, docile, low birth weights, easy fleshing, vaccinated, excellent quality and genetics, \$1200 each or best offer. Roseburg, OR 541-825-3352

Bulls / Polled Herefords: 18-24 months, price from \$1,500 to \$2,000 all shots. Portland, OR. 503-789-1531

Herd Reduction: bred cow/calf (out of TenX son) pairs, bred/ open heifers. Rochester, WA. 360-827-1309



Hereford Bull: purebred, 10 months old, 900- 1000 pounds, \$1500. Harvey Koski, Dora, OR. 541-290-9482

Hereford/ Limousin Cross Feeder Steers: 650 to 800 lbs. Wilsonville, OR. 503-781-8570



Mastel Family Murray Greys: Grass fed, cows, heifers and bulls. Roseburg, OR. 541-679-0677

Mobile Farm Slaughter Truck: fully equipped, ready to operate, \$11,900. Battle Ground, WA. Terry 360-687-5225

Opportunity to Own Excellent Quality Polled Hereford Cow/ Calf Pairs: cows A'd to top Nation bull. Bred heifers, bulls. All gentle. Cox Herefords, Jefferson, OR. 541-327-2458

Polled Hereford Bulls: (1) coming 2 year old, (3) 17 month olds, A/d, stout, gentle, ready to go to work. Cox Herefords, Jefferson, OR. 541-327-2458

Polled Hereford Bulls: Top Quality, lots of muscle and testicle, halter broke, ready for work. Also cow calf pairs. Can deliver. Vollstedt Farms, Albany, OR. 541-926-5640, 541-990-8038

Polled Hereford Herd Dispersal: most purebred with a few dairy crosses. Bulls, pairs, bred cows/ heifers. Aumsville, OR. 503-749-1861

Purebred Charolais Bulls: coming 2 year olds, docile. Asking \$1800 OBO. Shedd, OR. 541-224-3167

Purebred Charolais Long Yearling Bulls: Brownsville, OR. 541-466-3377 or 541-466-3187

Registered Black Angus Bulls: Approximately 18 months. Low birth weights, great dispositions. Reedsport, OR. 541-271-4940.

**1250 Cattle-Beef**

Red Angus Cross Heifers For Sale. Winlock, WA. See www.pnwsalebarn.com



Registered Polled Short-horned Bred Heifers: heifer calves and bull calves. Dallas, OR. 503-704-2408 no texts

Shorthorn Bulls: March-April Yearlings, Selected for length, width, depth and muscling. Mothers sound, thick, calm, good milk. Good carcass data. Coulee-City, WA. Call 509-632-8709, 509-683-3272

Wanted: Pair of Miniature Zebu Cattle. Please leave message: 208-316-4522

**Looking for CATTLE RANCHES?**  
Go to Class. 356  
Capital Press  
www.capitalpress.com  
1250-1-52-4#13

**1280 Livestock Equipment**



2016 FEED MIXER TRUCK

Schuler MS725 twin auger mixer. 2004 International truck, tandem axle, Allison automatic, two speed gear reducer, double frame. Used 4 months before closing feedlot, \$100,000. Scappoose, OR. Kyle 503-522-7168

Bale Barn Feeders In Stock: horses or cattle. NW Farm Supply, Hermiston, OR. 800-801-5650 or Mike 541-561-6047

Heavy Duty TECO Cattle Squeeze Chute. Roseburg, OR. 541-672-2829

Livestock feeders, water troughs \$60 each. White, black corded wool. Chicken feeders. Horse tack. English saddle, \$200, western saddle \$50. Lots more. Walla Walla, WA. 509-529-9788

Livestock Panels: 16' (6) rail, (3) brace, \$116 each. 12' panels, (6) rail, (2) brace, \$93. Bow gates, all lengths and sizes. These panels are new Green color, hundreds available. Heavy 16' Feeder Panels, \$300 each. La Grande, OR. 541-805-9279, 541-963-6258



Powder River Hydraulic Electric Cattle Chute: generator or hard wired, \$6500. Dixon, CA. 707-678-9430

**1310 Dairy Eq. & Supplies**

2004 Mueller Milk Silo: 30,000 gallons, \$69,000. Albany, OR. Call or text for pictures 503-580-0423

Kiln Dried Shavings: truck-load/ minimum 18 unit load, Forest Grove, OR. 503-849-0216

Polydome Calf Nursery: Hutches available for various climates. Western Polydome, Inc. Monroe, WA. 800-822-5837

SIGN UP TODAY FOR FREE WEEKLY DAIRY E-NEWSLETTER: access.capitalpress.com/newsletter.php

**NEW MANURE SPREADER**  
400 bu. • BUY OR RENT  
Call Scott at Barr-Tech  
Compost/Organics Recycling  
Authorized Dealer of RIK RITE Spreaders  
509-590-0437  
www.Barr-Tech.net  
Sprague, WA

**1310 Dairy Eq. & Supplies**

Used Dairy Equipment: Plate cooler and Glycol unit, milk pump and various dairy equipment. Salem, OR. 503-551-1578

**1320 Tanks & Storage**

(2) 40' HiCube Containers: excellent condition, \$2750 +tax each. Mount Vernon, WA. 360-424-9172

2000 Gallon Farm Fuel Storage: elevated stand with hoses, filters and nozzles. Lind, WA. 509-677-3233

2004 Mueller Milk Silo: 30,000 gallons, \$69,000. Albany, OR. Call or text for pictures 503-580-0423



316 SS Dome Bottom Tanks: 650 gallon up to 6,000 gallon. Call for pricing. Hermiston, OR. 541-571-0514 email: 53hchull@gmail.com

5000 Gallon DW Tank. 5000 Gallon DW 2 compartment tank (2500/2500). 4000 Gallon DW tank. Salem, OR. 503-881-9803



FEED STORAGE TANK 5000 gallon vertical feed storage tank 7' diameter cylinder by 10' tall. Steel plate construction. Approximate weight, 3.5 ton. U-load, U-Haul, \$400. Monmouth, OR. 804-519-4702.



Water Storage Tanks: 2500 gallon Norwesco, black (reducing algae), ONLY \$895! Perry's Supply, North Bend, OR. 541-756-2051

**1330 Generators**



250 KW Trailer Mounted Generator: 16V, 71 Detroit, diesel, fresh engine, \$7750. McMinnville, OR. 503-550-7625



GENERATORS: Low hour takeouts, 20kW to 2000kW, diesel, propane, & natural gas. Cooperstown, ND. We ship nationwide, 701-371-9526 or 701-367-4305. www.abrahamindustrial.com

**1380 Irrigation Equipment**

2", 3" and 4" Sprinkler Pipe: 30' and 40' lengths. 5000 in stock. Located in California. We Buy and Sell Irrigation Equipment. Pickup and Delivery. Call 559-779-4798 or 806-637-9523

(75) Used Pivots: Engines, pumps. Garden Valley, ID. Call Mike at 208-420-1480, or see www.pivotsplus.com

40 Lengths, 4" Gheen Pipes, \$75 each, plus fittings. Trailer available. Monroe, OR. 541-321-9088, 541-914-2585

4HH Cornell Pump With Panel: excellent condition, check valve, discharge valves, \$9400. Monroe, OR. 541-501-0918

**1380 Irrigation Equipment**

Pivots: Good, various lengths, all brands & late models. No rust. Plus some pivot parts, and buried wire. Call Keizer, OR. 503-881-3232, 503-390-3210

Portable Aluminum Irrigation Main Line: 40 foot sections- (40 pieces) 6 inch clamp style, (30 pieces) 4" western foot style, \$2.25 per foot. Eltopia, WA. 509-727-5073 nathan@victoryagllc.com



Evergreen Hose Reel: 1,600', 4.6" hose, power turn table, has computer, hydraulic anchors, Isuzu booster pump, 3 axle \$40,000. Brooks, OR. 503-580-4261

Irrigation Set-Up: 3 hp Robins and Meyers electric pump, 220 volt, new bearings and seals in recent years, 480' of wade rain aluminum pipe, (16) 3"x30" pipes, (30) 30 lb. rain birds, misc parts, \$995. Mosier, OR. 541-478-3467, 971-701-3696

Irrigation Travelers ●Idrofolgia Reels Made in Italy ●Wide Selection of Sizes ●Stocked In Lynden, WA Special Prices: 3.7" x 1320' with Gun: \$31,600 3" x 985' with Gun: \$17,900 2" x 650' with Gun: \$9600 www.idrofolgiausa.com 360-393-4923

Motivated Seller of Irrigation Equipment: Miscellaneous sizes of gated pipe aluminum hand lines, fittings and valves, main lines and Wade wheel lines. Redmond, OR. 541-480-2471



PUMP WITH SOLAR: Power any 3- phase pump with solar. Pump 70,000 gallons day with 3hp pump. On-grid, off-grid or hybrid systems available for irrigation, potable water and agricultural wells. Achieve payback in 1-2 years when replacing diesel. Incentives available. Sustainable Technologies 510-523-1122 www.sustech.co

**1380 Irrigation Equipment**

1380 Irrigation Equipment

**1390 Packing, Processing Eq.**

Packing Line For Sale: 4 lane PSI optical color sorter/ sizer. OMS camera system, 22 drops with tray feeders, 16 bagging drops, recently upgraded chain and solenoid exit ramps, all cross belts included, plus nice 20'x5' hydraulic sorting table. SW, ID. 208-250-4279

**1380 Irrigation Equipment**

**ERNST IRRIGATION**

"We understand your water needs. Let our experienced staff assist you with all your water quality and quantity needs."

- PRODUCTS:
- T and C 1/2"-6"
  - Filtration
  - Valves
  - Sprinklers
  - Water Meters
  - Chemical Injection
  - Bandit Clamps
  - Aluminum Irrigation Fittings & Pipe 2"-10"
  - Wheelines & Wheeline Fittings
  - Hard Hose Travelers
  - Linear
  - Pivots
  - K-Line POD Irrigation
  - Water Pumps
  - Steel Pipe & Fittings 1/2"-12"
  - PVC Fittings & Pipe 1/2"-18"
  - Low Volume/Micro Irrigation Drip Hose 1/2"-2"
  - Angus Drag Hose 2 1/2"-5" Suction & Discharge Hose

SERVICES:

Design & Consultation • Pumps & Panels, including Variable Frequency Drives • Traveler Repair, all makes & models • Field Fabrication

• Big Gun Rebuilding • Water Testing / Flow & Quality

www.Ernstirrigation.com (503) 633-1111 20179 Main St., St. Paul, OR 97137

**1390 Packing, Processing Eq.**

**1390 Packing, Processing Eq.**

**MARKET SUPPLY & DISTRIBUTION, INC.**  
www.marketsupplydist.com  
World Class Berry & Produce Packaging Solutions  
Degradable Bags, Flats, Wax Boxes, Clamshells, etc  
Farm • Agriculture • Packers • Food Processors, etc.  
#1 Source Delivering & Serving the NW Since 1988.  
Kent, WA • 253-479-0111

**1380 Irrigation Equipment**

WHEEL LINE IRRIGATION Selling 23 full sets of wheel line irrigation at \$4500/ set. Each set includes 32 pieces of 5" pipe, wheels, self levers, hose and valve, hose connector, mover with a good, running motor, end cap, and all joints. Photos upon request. Call Isidro for more info. Alturas, CA. 530-708-2199

**BIG DIAMETER PIPE FOR IRRIGATION HYDRO ELECTRIC ROAD BORE AND MORE**  
BISON PIPE & SUPPLY  
800.764.7473

IRRIGATION EQUIPMENT BOUGHT. SOLD. RENTAL. Design of Effluent Handling Systems - Gates, Valves & Aerators New & Used Parts. • Aluminum Pipe • Certalok • Siphon Tubes • HDPE • Sand Media Filters • Wheel Lines • Pumps

CASH FOR SAWMILLS: We buy Wood-Mizer, Mobile Dimension, Mighty Mite and more. Portland, OR. Call 971-271-8070.  
1450 Forklifts  
2004 TOYOTA FORKLIFT 8 SERIES: 500 pound lift, serial #75592, model FGU25, great condition, well maintained, \$14,000 OBO. Woodburn, OR. hr@Loennursery.com, 503-982-6300

**1390 Packing, Processing Eq.**

1390 Packing, Processing Eq.

**1390 Packing, Processing Eq.**



Rainier Cherry/ Fruit Packing Line: all stainless steel, has a variety of uses, \$30,000 OBO. The Dalles, OR. 541-980-4594

**1410 Logging Equipment**

D4-7U LOGGING CAT: Direct start, five roller, new tracks, hydraulic track adjustment, fresh engine, free spool winch, 70% undercarriage, \$12,000. Buxton, OR. 503-324-3305



JOHN DEERE 440A SKIDDER Good old Girl! Lots of new parts, \$14,000 OBO. Aulsea OR. 541-487-4564

Older Machinery: Chippers, Vans, debarker, new rock blade, John Day, OR. 541-575-1525

**1440 Sawmill Equipment**

1440 Sawmill Equipment

**1450 Forklifts**



2007 YALE GP360: 36,000 lb. capacity, 989 actual hours, 10' forks, hydraulic fork positioners, sideshift, 212" upright, 2-stage mast, solid pneumatics, same as Hyster HD model. Delivery available, \$105,000. Gaston, OR. 503-789-3726

**1470 Heavy & Indust. Equip.**



2007 Yale GP360: 36,000 lb. capacity, 989 actual hours, 10' forks, hydraulic fork positioners, sideshift, 212" upright, 2-stage mast, solid pneumatics, same as Hyster HD model. Delivery available, \$105,000. Gaston, OR. 503-789-3726

**1470 Heavy & Indust. Equip.**



1996 John Deere 6200: 640 self-leveling loader, 115 HP, two remotes, \$25,000. Naches, WA. 509-945-2453



2005 RT40 Ditchwitch Trencher: 650 hours, 3000' on new dirt chain, \$13,500. Silverton, OR. 503-932-0766



2010 Deere Wheel Loader: 644K, 9800 hours, new tires, 4-1/4 yard bucket, air condition. Runs great! \$89,000. Wilsonville, OR. 503-969-9545 Bob

**1470 Heavy & Indust. Equip.**

To Sell a Little, To Sell a Lot... Classified Line Ads 1-800-882-6789 www.capitalpress.com

CASE INDUSTRIAL PARTS We sell genuine, after market, and used CASE parts at discount prices nationwide. Call For Free Catalog. CENTRAL EQUIPMENT AFTER MARKET & USED PARTS Medford, OR (888) 593-8749

**DON PEILA TRACTOR REPAIR • PARTS**  
specializing in JOHN DEERE INDUSTRIAL EQUIPMENT  
Good Used, Reconditioned & After-Market Parts  
Peilatortorepair-parts.com  
1-877-423-9746 (541) 772-1801  
SATellite PARTS LOCATING SYSTEM

ATI Machinery, Inc. 1-888-461-0625 Five Points, CA  
Serving CA & AZ Farmers since 1975

NOW RENTING! D8T-SU 3-shank rear mount ripper. atimachinery.com

**163H GRADER**  
ALL WHEEL DRIVE WITH RIPPERS; 14,000 HOURS. SN 5AK00199  
\$95,000 CALL 541-782-2201  
Ask for Lindsay • Oakridge, Oregon

**1480 Farm Equipment Parts**

**1480 Farm Equipment Parts**

**BIG TRACTOR PARTS, INC.**

~ GEARED FOR THE FUTURE ~

**STEIGER TRACTOR SPECIALIST**

1. We are your source for new & used Steiger drivetrain parts Series 1 - 9300 Series.
2. We rebuild Spicer manual transmissions, Fugi power shift transmissions, dropboxes & axle with ONE YEAR WARRANTY!
3. We now rebuild computer control boxes for Steiger tractors 1982-1999.

800-982-1769  
www.bigtractorparts.com

**ASSOCIATED TRACTOR SERVICE INC.**

NEW • USED • REBUILT PARTS PARTS • SERVICE • EQUIPMENT Satisfaction Guaranteed Since 1954 PARTS ★ SERVICE ★ EQUIPMENT

Used Parts National Locator Services • BEGE Hydraulic Pumps & Parts  
CALL NOW & CHECK OUT OUR INVENTORY

(800) 735-1301 • (209) 466-3003  
1323 W. Charter Way, Stockton, CA 95206-1110

**1470 Heavy & Indust. Equip.**

**1470 Heavy & Indust. Equip.**

**1470 Heavy & Indust. Equip.**



**RIVERBROOK FARM • HAULING SERVICE**

Brooks, OR



**WE HAUL!**

- Building Supplies • Farm Equipment
- Construction Equipment • Heavy Equipment
- Granular Fertilizer • Grain/Wheat



888-393-1819 • www.riverbrooktrucking.com

**TRUCK SCALES • LIVESTOCK SCALES • WAREHOUSE SCALES**

**Your Truck & Livestock Scale Specialists**

**NEW SCALES USED SCALES**

**All of our Scales are Legal For Trade**

