

1470 Heavy & Indust. Equip.

1995 John Deere 310D Backhoe: 2WD, 4300 hours, runs and works well, \$14,000. Call 208-983-8100



631D and 633 Cat Scrapers: (3) available, \$28,000 each. Ontario, OR. Call Dale 541-212-6159



Peterbilt Water Truck: 4000 gallon, hydraulic delivery, self loading, \$29,750 OBO. Eastern, OR. 541-215-5193

Reverse Osmosis Water Treatment Plant/ Leachate: Pumps, electrical, filters, tanks. Used very little, \$75,000 or trade (original cost \$3,000,000). Creswell, OR. 541-912-7807

TRUCK SCALE: 87'x11' Toledo steel deck electronic truck scale. For sale or rent. Canby, OR. Call 503-803-1926



250 KW Trailer Mounted Generator: 16V, 71 Detroit, diesel, fresh engine, \$7750. McMinnville, OR. 503-550-7625

1480 Farm Equipment Parts

1470 Heavy & Indust. Equip.



2005 RT40 Ditchwitch Trencher: 650 hours, 30000' on new dirt chain, \$13,500. Silverton, OR. 503-932-0766

BH7600 Backhoe With Thumb: 7' to 7-1/2' digging reach. Nice unit. Yamhill, OR. 503-662-3459

WANTED: well used 24,000 to 50,000 pound trackhoe, 8000+ hours, if some repairs needed ok. Travel to any area. 503-551-1578

NOW RENTING!
CAT-D8T SU
w/3-shank mounted ripper
ATIMACHINERY.COM
888-461-0625
Five Points, CA 30-3/17

CASE INDUSTRIAL PARTS
We sell genuine, after market, and used CASE parts at discount prices nationwide. Call For Free Catalog.
CENTRAL EQUIPMENT
AFTER MARKET & USED PARTS
Medford, OR
(888) 593-8749
1803/24/16

1490 Antique Farm Eq. & Parts

John Deere Model AN: #491443 and Model D, #149047. Nice, not hedge row hulks. Goldendale, WA. Pictures, details: laschoot@gmail.com

1480 Farm Equipment Parts

1490 Antique Farm Eq. & Parts

John Deere Model M: ran last time parked, original paint, bucket and blade. Best price. Best offer. Crescent, OR. 541-433-2332

1520 Hay Equipment

#1 Balewagons: Buy, Sell, New Holland 2&3 wide self-propelled, pull-type models, parts, tires, manuals. Caldwell, ID. 208-880-2889 www.balewagon.com

1068 New Holland Bale Wagon: 2 and 3- tie stacker, 90%+ tires, air conditioned, field ready, \$18,500 OBO. Ellensburg, WA. 509-962-3669



2001 HW320 New Holland Swather: 16', 1 season on new conditioner rolls, update on fly wheel, air-cab, buddy seat, 2008 hours, machine had excellent care. **REDUCED \$25,000 OBO.** Colton, WA. 509-334-1706

2010 NEW HOLLAND BC 5080 BALER

2010 New Holland BC 5080 baler, 2 tie, excellent condition. Has grass kit installed. In chamber moisture tester. Has knottor fan. Holds 8 rolls of twine. Makes a beautiful bale. 2nd owner, \$21,500 OBO. Bend, OR. Call if you have questions. Thanks. 541-377-0040



John Deere 4890 Swather: 2001, 890 16 foot header with reverser, steel roller conditioner, 1052 hours. Superb, nearly new condition inside and out, \$42,500. Kennewick, WA. Text for photos 509-948-2564.

John Deere 945 MoCo Swather: with flail conditioner, 13.5' cut, center pivot, low acres, \$12,000. Cottonwood, ID. 208-983-8100

Large Supply of Rebuilt New Holland Bale Wagons: Also buying New Holland bale wagons. Sod Busters Sales, Polson, MT. 406-883-2118

Late Model New Holland 1095 with 1032 Mil-Stak Bale Clamp. \$90,000 or \$65,000 without Mil-Stak. Sod Busters Sales, Polson, MT. 877-735-2108, 406-883-2118

New And Used Parts: for all models New Holland bale wagons. **Largest Inventory in North America.** Sod Busters Sales, Polson, MT. 877-735-2108 or 406-883-2118

Allen Hay Rakes: 8803 electric, 5 function, \$13,500. 8827 cable, very good condition, \$8,000. Deer Park, WA. 509-994-9520

New Holland 1030 Stacker: pull type, 2 tie and 3 tie, fully reconditioned and field ready. Probably the nicest one available, \$11,500. Kennewick, WA. Text for photos 509-948-2564.

NEW HOLLAND 1441 DISCbine
2009, BB 960A, 3x4x8 big baler, tandem axle, excellent shape, \$68,000. (2) New Holland 216 hydraulic drive rakes, \$6500 each. Sweet Home, OR. 541-409-0203

BR7090 New Holland Twine Round Baler: wide, hydraulic pickup flotation tires. Good condition, \$22,900. Lakeview, OR. 541-219-0741

Case IH 8585(4790): 35,000 bales, good baler, \$30,000. IH 5288, duals, weights, nice, (sold). Deer Park, WA. 509-994-9520

Case IH SBX550 Baler: like new \$18,000. New Holland 166 hay inverter, like new \$7000. Twisp, WA. 509-429-9830

1600 Farm Equipment

1520 Hay Equipment

Case 8580 Big Baler: good condition, field ready. Mesa, WA. 509-521-7860

Case IH8840 Swather: 1450 hours, 12' specialty crop header, UHMW lined \$12,000. Banks, OR. 503-314-8484



FREEMAN 4400 BLOCK STACKER: 5.9 Cummins engine, Allison automatic transmission, air conditioning, great tires, very good paint, ready to work. Got out of hay, \$15,000. Banks, OR. 503-577-9457

HAY EQUIPMENT:

New Holland 575 Baler, \$10,500. New Holland 408 mower/ conditioner \$6750. New Holland 1035 bale wagon, \$4200. Tarrup tedder/rake, 2 baskets, \$1900. OBO on all equipment. Sequim, WA. 360-683-5441, email: tcsmiths@wavecable.com



John Deere 4890 Swather: 2001, 890 16 foot header with reverser, steel roller conditioner, 1052 hours. Superb, nearly new condition inside and out, \$42,500. Kennewick, WA. Text for photos 509-948-2564.

John Deere 945 MoCo Swather: with flail conditioner, 13.5' cut, center pivot, low acres, \$12,000. Cottonwood, ID. 208-983-8100

Large Supply of Rebuilt New Holland Bale Wagons: Also buying New Holland bale wagons. Sod Busters Sales, Polson, MT. 406-883-2118

Late Model New Holland 1095 with 1032 Mil-Stak Bale Clamp. \$90,000 or \$65,000 without Mil-Stak. Sod Busters Sales, Polson, MT. 877-735-2108, 406-883-2118

New And Used Parts: for all models New Holland bale wagons. **Largest Inventory in North America.** Sod Busters Sales, Polson, MT. 877-735-2108 or 406-883-2118

Allen Hay Rakes: 8803 electric, 5 function, \$13,500. 8827 cable, very good condition, \$8,000. Deer Park, WA. 509-994-9520

New Holland 1030 Stacker: pull type, 2 tie and 3 tie, fully reconditioned and field ready. Probably the nicest one available, \$11,500. Kennewick, WA. Text for photos 509-948-2564.

NEW HOLLAND 1441 DISCbine
2009, BB 960A, 3x4x8 big baler, tandem axle, excellent shape, \$68,000. (2) New Holland 216 hydraulic drive rakes, \$6500 each. Sweet Home, OR. 541-409-0203

1600 Farm Equipment

1520 Hay Equipment

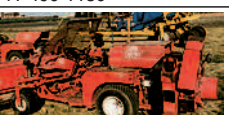
739 Allen Rake: twin basket, \$2000. Dallas, OR. 503-931-3724.

1540 Orchard, Vineyard Equip.

(16) Orchard Ladders: Aluminum, 8', 12', 14', and 16'. Newberg, OR. 503-932-0766



Almost New 500 Gallon Rears Power Blast: 38" fan, solid stainless steel, John Deere turbo diesel motor, \$40,000. Hood River, OR. 541-490-1150



Flory Sweepers: Cab and open station, starting at \$12,500. Silverton, OR. 503-932-0766

HAZELNUT HARVESTING
Sweeper and Harvester available for Custom Harvesting of your farm this fall! Call for pricing and availability. Monmouth, OR Lyle: 503-508-6788



John Deere 6420: MFD, 4300 hours, 18.4/38" tires with duals, power quad, \$44,000. Salem, OR. 503-932-0933

PELLENG GRAPE LEAF PULLER

3P for tractor with 3 point hitch. Dimensions: 8'Lx6'Wx8'9"H. Weight: 1,450 lbs. Works well, good condition. Maintained by agricultural business. Forklift available to assist with loading, can provide pallet. Call with questions or to see. Sold "as is," \$7500 OBO. Price negotiable. Yamhill, OR. 503-662-3926

RCO Baits
Gophers • Squirrels
Voles-Moles
Dealer Locator
1-800-214-2248
Harrisburg, OR 30-3/15

Looking for ORCHARD/ VINEYARD PROPERTY?
Go to Class. 387
Capital Press
The West's #1 Weekly
www.capitalpress.com
1540-1-52-4/13

1560 Tractors

John Deere Model B: running when shedded 20 years ago. New tires. Deal includes parts tractor, John Deere sickle mower and John Deere 2- bottom plow, \$3,000. White Salmon, WA. 541-490-2221

John Deere 4450: MWD, cab, 15 speed power shift, 6000 hours, \$4250. Hillsboro, OR. 503-939-4144

2006 New Holland T130 Tractors For Sale: 105 hp, 20 speed, shuttle shift, 4 wheel drive, cab. Good condition, \$36,900. Lakeview, OR. 541-219-0741

1600 Farm Equipment

1560 Tractors

#1 Massey Ferguson Tractors: Oregon City, OR. 503-631-3411

2012 Kubota M126X: 4WD, quick attach loader, 2 remotes, very good condition, 1700 hours, \$55,000. Stayton, OR. 503-508-2466



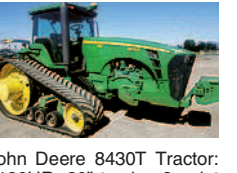
2017 Antonio Carraro: 30 Hours •TRH 9500 •Starlight cab •reversing drive station •a/c, heat, wipers •87 HP Yanmar diesel •hydrostatic, 4 speed ranges, 0 to 27 mph •4x4 and 2x4 •chassis oscillation 15 degrees •quick connect Bonatti loader with grapple bucket, \$74,700. Tiller \$5400, flail mower \$6500. Newport, OR. 541-994-6767

Attention: Wanted Kubota or John Deere, 4x4 compact tractor with loader/ equipment. Carlton, OR. 503-550-0094

Ford 4000 Diesel 10 Speed Tractor, \$2900. 9' 3 point spring tooth ripper, \$900. (2) 1000 Gallon fuel tanks, \$250 each. Madras, OR. 541-480-2740

International 986: 105 HP, air conditioning, runs great, \$9000 OBO. Woodburn, OR. 503-984-1237

John Deere 8430T Tractor: 7130HR, 30" tracks, 3 point and quick hitch, full set of front weights, good condition, GPS ready, \$73,000. Irrigon, OR. Call/ text 541-314-0095



John Deere 8770: 6 new tires, 3pt hitch, 3 remotes, 15-1700 hours on engine rebuild, \$32,000. Silverton, OR. 503-932-0766



(2) 2013 Massey Ferguson 8650 Tractors: 240 hp, Xenon lighting package, CVT transmission, MFWD, speed steer, front suspension, cab suspension, 5 SCVs rear duals, front and rear weights tires at 85%, front tires 420/85R/34, rear tires 480/80R/50, dual beacons, telescope power mirrors, quick hitch, tractors are one serial number apart, like new condition. One tractor has 870 hours other has 984 hours, \$128,000 each OBO. Bend, OR. 541-420-7124

John Deere 4450: MWD, cab, 15 speed power shift, 6000 hours, \$4250. Hillsboro, OR. 503-939-4144

John Deere Model B: running when shedded 20 years ago. New tires. Deal includes parts tractor, John Deere sickle mower and John Deere 2- bottom plow, \$3,000. White Salmon, WA. 541-490-2221

John Deere 4450: MWD, cab, 15 speed power shift, 6000 hours, \$4250. Hillsboro, OR. 503-939-4144

New Holland T4.105F: 1200 hours, 3 remotes, super steer, \$46,500. Silverton, OR. 503-932-0766

1600 Farm Equipment

1560 Tractors

Kubota M125X: MFWD, 385 hours, cab, PTO, dual remotes, front weights, \$40,000. Albany, OR. 541-619-1160

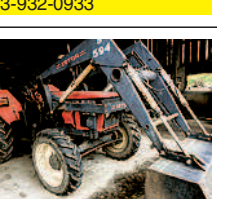
McCormick 55 Farnall Cub: with brush hog, good condition, \$3200. Elmira, OR. Evenings 541-935-9433



Reconditioned Ford 660: 5 speed, live PTO, 3- point hitch, runs beautifully. All mechanical systems operate well. New radiator, front tires, instrument cluster, front bumper, steering wheel, lights and wiring harness for original 6 volt electrical system, \$3500. Corvallis, OR. 541-231-8898

1560 Tractors

JOHN DEERE 4760 TRACTOR MFWD, Duals, Quickhitch, 5600 hours and Good Condition, \$43,000. Salem, OR. 503-932-0933



ZETOR TRACTOR/ IMPLEMENTS:
5245 Zetor, 4WD, \$594 6' loader. Tractor serial #028035, only 1117 hours. Rhino 950, 7' 6" wide blade with cylinders. Continental Beltran 9" auger. 6" brush hog, 7"6" flail mower, 14' tandem trailer, battery operated brakes, \$12,000. Have all pictures. Toledo, WA. 541-350-9501

www.trailer-world.com • www.trailer-world.com

NEW BRANSON 2400h

MSRP \$20,118.20
Reg. Price \$16,230.00
Front Loader
Inst. Rebate \$2,231.00
Sale Price \$13,999

- 24 HP Diesel Engine
- 1060 lb. Front Loader Full Height Lift Capacity
- 87.6" Loader Lift Height at Pivot Pin
- Hydrostatic Steering • Dual Hydraulic Pumps
- Cast Iron Rear End and Transmission Housing
- Two-Speed Rear PTO • Differential Lock
- Four Year Drive Train Warranty
- Available Backhoe in stock

Many models to choose from, up to 80HP, in stock now!

Sale price good through Sep. 30, 2017

TRAILER WORLD
A Division of **TRAILER SALES**

John 3:16

551 SE 13th St., Ontario, OR 97914 (541) 889-4310

1241 Evergreen Rd., Woodburn, OR 97071 (503) 981-8777

www.trailer-world.com • www.trailer-world.com

Branson TRACTORS

BRANSON Model 4020R

SERIES
3120R 4020R
3520R 4525R
3510H 4720H
6640 8050

24 - 80 hp., 4 wheel drive
Compact Synchro-Shuttle
Hydro 24, 28, 35, 47 hp

THE TRACTOR STORE
(541) 342-5464
5450 W. 11th, Eugene, OR

1600 Farm Equipment

FTE
Portland Trailer & Equipment, Inc.

40' USED CONTAINERS P.O.R.

503-285-7901 • Fax 503-285-7904
3841 N. Columbia Blvd. • Portland, OR 97217

Western STORAGE TRAILERS
1-800-652-7368

1-800-OK-2-RENT
Rent or Sale
Containers and Trailers

CONTAINERS: 20' & 40'
TRAILERS: 27', 40', 45' & 48'

Western Mobile Storage
1-800-652-7368 • 541-342-1835
Eugene, OR 1600-27-4/3#5

BIG TRACTOR PARTS, INC.
~ GEARED FOR THE FUTURE ~

STEIGER TRACTOR SPECIALIST

- 1. We are your source for new & used Steiger drivetrain parts Series 1 - 9300 Series.
- 2. We rebuild Spicer manual transmissions, Fugi power shift transmissions, dropboxes & axle with ONE YEAR WARRANTY!
- 3. We now rebuild computer control boxes for Steiger tractors 1982-1999.

800-982-1769
www.bigtractorparts.com

NEW, USED, AND REMAN PARTS
TOLL FREE: 1-877-928-1646
FARMLAND • 32427 OLD HWY 34, TANGENT, OR 97389

Reman Engines for Case/IH, John Deere, and Ford

JD 4010, 4020 Clutch Kits \$715

Seats w/Air Suspension \$1,025

Combine Parts

A/C Components

Farmland Tractor Supply
Parts@Farmlandtractor.com

HAYMAKER HEAVEN

R.I.P.
Reasonable Implement Pricing

FRESH IN FOR PARTS ONLY

HESSTON BALERS/SWATHERS

BALERS	1160
4590	1170
4600	1270
4650	6450
4655	6550
4750	6600
4755	6610
4790	6650
4900	8100
4910	8400
SWATHERS	8450
1014	8500
1014+2	8550

LOTS OF TRACTORS COMBINES TOO!

Nyssa Tractor & Implement
Celebrating 27 years in the agricultural machinery business.
Our yard has 4.5 miles of road, with machinery on both sides.
FREE TOURS GIVEN DAILY.
Call Toll Free: **(888) 372-4020**
www.nyssatractor.com
sales@nyssatractor.com
Nyssa, OR 30-3/17

D&S TIRES INC.

26884 Pearl Road Parma, ID 83660 (208) 635-0700

661 South Lincoln St. West Point, NE 68788 (402) 372-5572

620 North 23rd St. Richmond, IN 47374 (765) 965-5251

www.dstiresales.com

WE ARE YOUR #1 SOURCE FOR: RELUGGING & REPAIRING RUBBER TRACKS & RADIAL TIRES!

STOP! Don't Throw Away Perfectly Good Track
Just Because It's Missing Guide Blocks. Don't Waste Money...
We Can Repair Your Guide Blocks for Much Cheaper Than New.

CALL D&S TIRES TO GET YOUR GUIDE BLOCKS & TRACK REPAIRED TODAY!

Stop In Or Call Today!!

BRING YOUR TRACKS & RADIAL TIRES IN NOW!!! SAVE UP TO 50% OVER NEW!

CUSTOMIZED TRACK & WHEEL OPTIONS

- LUG HEIGHT
- LUG SPACING
- TRACK WIDTH
- FRONT IDLER SIZING
- FEED YARD GRABBER

Steel Belted Radial Retread Irrigation Tires On Hand!