



Willamette Valley vineyards fund health care van for workers

By ERIC MORTENSON
Capital Press

DAYTON, Ore. — It's 2 p.m., two hours short of quitting time, when the pickup trucks roll in from the vineyards. Workers, all Latino, hop down from the truck beds; 10, now two dozen, 44 in all. They take seats in the shade of the Stoller Vineyards maintenance shop, chatting, laughing, still wearing their field garb: hats, hoods and head scarves to protect from the sun, long sleeves despite the heat, many with pruning shears in holders on their belts.

The green and white ¡Salud! Services van before them is a familiar sight by now. It is from Tuahly Healthcare, which operates hospitals and clinics west of Portland and for more than 25 years has brought basic medical care to Willamette Valley vineyard workers. The van, staffed by bi-lingual nurses and medical assistants, provides blood pressure and cholesterol checks, vaccinations, treatment and referrals — about 5,000 patient visits annually. “¡Salud!” is like a toast in Spanish, meaning “cheers” or “good health.”

Oregon vineyards recognize a broader translation, and it is the reason they pay for the mobile medical service. The industry raises an average of \$700,000 annually — including a record \$928,000 in 2016 — with a two-day auction of their best Pinot noir wines.

The vintners' broader interpretation of ¡Salud! is part of the van's logo, which shows a kneeling worker tending a grapevine. It includes the slogan, “To Our Health,” because everyone in the industry benefits.

Hand in hand

Leda Garside, a registered nurse who manages ¡Salud! Services, is from Costa Rica and counts herself lucky. She came to the U.S. with an American husband, the proper papers and an education. Many of the patients she sees at the mobile clinic lack those advantages, yet they are the “backbone” of Oregon agriculture, she said.

Turn to HEALTH, Page 12

TO OUR HEALTH

Photos by Eric Mortenson/Capital Press
Leda Garside takes a blood pressure reading on a worker at Stoller Vineyards during a mobile medical clinic stop at the vineyard July 6. Garside is a registered nurse and director of Tuahly Healthcare's ¡Salud! Services, which is primarily funded by the wine industry.

Western migrant worker health

Most commonly diagnosed non-communicable conditions*

A 2014 study conducted by the National Center for Farmworker Health found that Western migrant workers had higher rates of hypertension, asthma and obesity than in other regions of the U.S.

Rank/condition	Percentage
1. Hypertension	19.5%
2. Diabetes mellitus	14.5
3. Overweight/obesity	12.6
4. Depression/other	4.4
5. Asthma	3.7

*Study includes 70 migrant health centers treating 574,687 patients.

Source: National Center for Farmworker Health

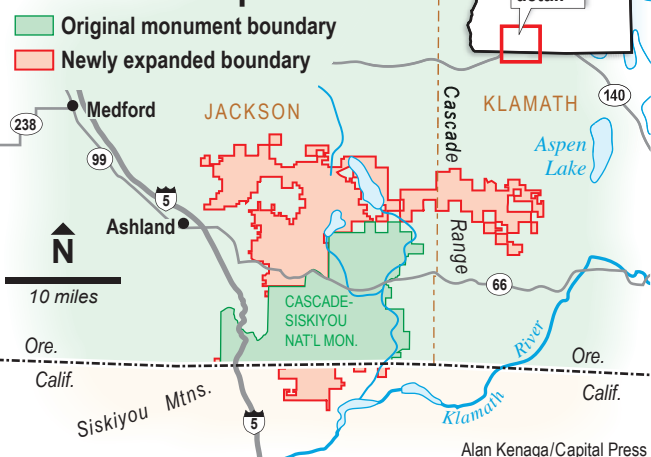
Alan Kenaga/Capital Press



Jose Reyna, right, a physical therapy professor at Pacific University, talks with a White Rose Estate vineyard worker about his back pain.

Zinke: How monument's boundaries were set remains mystery

Cascade-Siskiyou National Monument expansion



Alan Kenaga/Capital Press

By MATUESZ PERKOWSKI
Capital Press

MEDFORD, Ore. — Since undertaking a review of Oregon's Cascade-Siskiyou National Monument, Interior Secretary Ryan Zinke hasn't gotten a satisfactory answer to a key question.

“How were the boundaries made? Nobody knows how the boundaries were made,” Zinke said during a July 15 visit to the monument.

The original 53,000-acre monument was created in 2000 but was increased to roughly 100,000 acres by the Obama administration last year.

It's now one of 27 national monuments created in the last two decades that are under review by the Trump administration.

Zinke's recommendation for potential changes to the Cascade-Siskiyou's monument is due Aug. 23, after which any final decision will be in President Donald Trump's hands.

“He's the best boss I've ever worked for. He doesn't micromanage,” said Zinke.

Unlike many national monuments, the Cascade-Siskiyou isn't known for a particular geological feature, but rather for its unique biodiversity.

“Other monuments don't have the same object,” said Zinke.

Another particular trait of the Cascade-Siskiyou is the large amount of private land that's enclosed within its boundaries, which can create access problems for landowners, he said.

While he's prepared to accept the premise that the area's flora and fauna justify a monument designation, Zinke said the Cascade-Siskiyou's boundaries seem arbitrary in some areas.

So far, nobody at the Interior Department has taken responsibility for drawing the boundaries or explaining their placement, he said.

It's become clear the boundaries weren't established at the direction of local U.S. Bureau of Land Management officials, Zinke said.

“They had nearly no input in drawing the boundaries and that concerns me,” he said.

Turn to ZINKE, Page 12

Labor tight but adequate for now; September could be tighter

By DAN WHEAT
Capital Press

Halfway through Washington's cherry harvest, the labor supply seems adequate, growers say.

But there's concern about early September, when harvest workers are needed for apples, pears, grapes and hops — all at the same time.

In California, Daniel Sumner, director of the University of California Agricultural Issues Center at UC-Davis, says he thinks the labor shortage is worse than it was the last several years.

“We have been hearing from growers in several locations around the state that labor is harder to find and wages are higher,” Sumner said.

Growers and packers of labor-intensive crops throughout the West have been worried about having enough seasonal workers because fewer people are illegally crossing the U.S.-Mexico border and a heightened fear of deportation by U.S. immigration authorities.

Turn to LABOR, Page 12



Dan Wheat/Capital Press

Enrique Ventura picks Rainier cherries in Doug Drescher's Orondo, Wash., orchard on July 12. Growers are paying more and are worried about having enough pickers for the fall apple harvest.

EVER WONDERED WHAT TO DO WITH THAT OLD, WORN OUT COMMODITY TRAILER?

NEW SALES • REBIN PROGRAM • TRAILER PARTS • REPAIR & SERVICE • CUSTOM MANUFACTURING



Our Rebin Program can turn your old trailer into a new trailer! We will remove all working mechanical parts, and replace the bin with a new Stainless Steel STC Bin on your existing running gear. All parts deemed reusable are reinstalled on the new bin. All of this at the fraction of the cost of a new trailer!



494 W. Hwy 39
Blackfoot, ID 83321
208-785-1364

WWW.STCTRAILERS.COM

