

1390 Packing, Processing Eq.



LANTECH STRETCH WRAPPER
Extended 110' wrapping height, 5000 lb. turntable capacity, 65' turntable.

Packing Line For Sale: 4 lane PSI color sorter/ sizer, OMS camera system, 22 drops with tray feeders, 16 bagging drops...



Rainier Cherry/ Fruit Packing Line: all stainless steel, has a variety of uses, \$30,000 OBO.

1410 Logging Equipment



1994 D5H TSK: Fixed grapple with winch, excellent undercarriage, 10' six way blade...

235 CAT Log Shovel: and 235 CAT log shovel for parts, Danzco delimeter and fire wagon.

Older Machinery: Chippers, Vans, debarker, new rock blade, John Day, OR.

1440 Sawmill Equipment

CASH FOR SAWMILLS: We buy Wood-Mizer, Mobile Dimension, Mighty Mite, and more.

1450 Forklifts

(4) Forklifts: H190HD Hyster, Cummins, H300B Hyster, Perkins, V180B Cat.

Diesel Engines For Sale: came from hyster lift trucks. Yanmar 3.3L, 2012, less than 100 hours...

Gruse F-40: 3 point/ hydraulic fork lift, 4000 lb. capacity, never used, \$1250.

Yale 1997 Electric Forklift: 3000 lb. with charger, \$9500.

Real Knowledge. Real People. Real Results! Capital Press The West's Ag Weekly. Brittany Steele Ad Representative in NW Oregon and W Washington.

Used Lift Trucks. Also New & Used Parts All sizes, makes & prices. LIFT TRUCK SERVICE 888-890-1450

1470 Heavy & Indust. Equip. 2005 RT40 Ditchwitch Trencher: 650 hours, 30000' on new dirt chain, \$13,500.

RIVERBROOK FARM • HAULING SERVICE Brooks, OR. WE HAUL! Building Supplies • Farm Equipment • Construction Equipment • Heavy Equipment • Granular Fertilizer • Grain/Wheat.

1470 Heavy & Indust. Equip.

1995 John Deere 310D Backhoe: 2WD, 4300 hours, runs and works well, \$14,000.



2010 Deere Wheel Loader: 644K, 9800 hours, new tires, 4-1/4 yard bucket, air condition.



John Deere 210C 4 x 4 Skip Loader: hydraulic blade, 7 box scraper, 1 yard bucket, 7900 hours.



Mitsubishi WS-300 Loader: 9' 6" reach, diesel, power shift, fresh off the job, ready to work, \$12,500.

1982 AG-CHEM TERRAGATOR 3000: Clean and runs very well. This unit was used to haul fertilizer.

CAT 613-B: Self-loading scraper, good condition, \$29,500. D-6 H U-dozer with tilt and ripper.

CAT D-8 46A AND CAT 80 SCRAPER: D-8 runs good, in fair condition. Scraper is in good condition.

CAT 613-B: Self-loading scraper, good condition, \$29,500. D-6 H U-dozer with tilt and ripper.

ATI Machinery, Inc. 1-888-461-0625 Five Points, CA. Serving CA & AZ Farmers since 1975.

BIG TRACTOR PARTS, INC. ~ GEARED FOR THE FUTURE ~

STEIGER TRACTOR SPECIALIST. We are your source for new & used Steiger drivetrain parts Series 1 - 9300 Series.

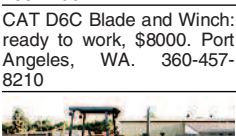
NEW, USED, AND REMAN PARTS TOLL FREE: 1-877-928-1646

Reman Engines for Case/IH, John Deere, and Ford. Seats w/Air Suspension \$1,025. Combine Parts. JD 4010, 4020 Clutch Kits \$715.

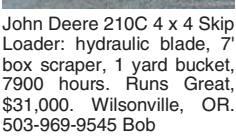
1470 Heavy & Indust. Equip. Farmland Tractor Supply

1470 Heavy & Indust. Equip.

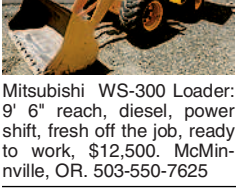
25 hp Sullair Twin Screw Air Compressor: with drier and tank. Heil grout pump with hose.



CAT D6C Blade and Winch: ready to work, \$8000. Port Angeles, WA.



John Deere 210C 4 x 4 Skip Loader: hydraulic blade, 7 box scraper, 1 yard bucket, 7900 hours.



New 8' Brush Rakes: with mounting brackets, \$1250 each. Clackamas Tractor.

Road Grader: Huber D1500 \$3750. Prescott, WA.

IF YOU HAVE A BEEF - sell it in next week's Capital Press!

CASE INDUSTRIAL PARTS. We sell genuine, after market, and used CASE parts at discount prices nationwide.

CENTRAL EQUIPMENT AFTER MARKET & USED PARTS Medford, OR (888) 593-8749

DON PEILA TRACTOR REPAIR • PARTS specializing in JOHN DEERE INDUSTRIAL EQUIPMENT Good Used, Reconditioned & After-Market Parts.

NOW RENTING! D8T-SU 3-shank rear mount ripper. atimachinery.com

1480 Farm Equipment Parts

1480 Farm Equipment Parts

1480 Farm Equipment Parts

(2) SHURCO TRUCK TARPS: Fit 20' bed, all hardware included, excellent condition, stored inside, \$800 apiece, or \$1500 for both.

IT'S A SMALL WORLD FOLKS! A student in Vancouver, BC bought my Leyland 272 tractor to ship to his dad in South Africa!

CapitalAgMedia CLASSIFIED ADVERTISING 1-800-882-6789 Fax (503) 370-4383 www.capitalpress.com

1480 Farm Equipment Parts

New Holland 960 Pickup Header and 960 Grain Table: currently on New Holland TR85.

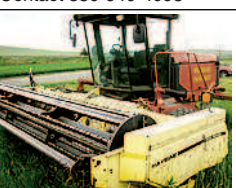
1490 Antique Farm Eq. & Parts

1942 International TD9: with blade, it runs, \$2500. Okanogan, WA.

John Deere H: hand start, starts easy, runs good, with cultivator, \$3750.

1520 Hay Equipment

(3) NEW HOLLAND 1048 STACK CRUISERS: Good condition, good tires, strong motors.



2001 HW320 New Holland Swather: 16', 1 season on new conditioner rolls, update on fly wheel.

(2) Ten Bale Grapples: 1 high lift quarter turn, 1 side shift. Excellent condition.

2011 New Holland BC5070: small square baler, builds a 14"x16" bale.

1480 Farm Equipment Parts

2011 New Holland H8080 Swather: with 416 16' discbine header, 1700 hours.

2013 Twinstar 2030-G2 Rake: 5 bar basket, \$20,000.

739 Allen Rake: twin basket, \$2000. Dallas, OR.

2012 NEW HOLLAND BR7090 Like new condition, BR7090 bale, 5000 bales through it.

AMERICAN EAGLE STACKER 1994 International truck with 2003 Circle C American Eagle bale stacker.

Bale Handler TBH-SR: bale loader, 900 lb. bales, never used, \$1200.

BR7090 New Holland Twine Round Baler: wide, hydraulic pickup flotation tires.

1520 Hay Equipment

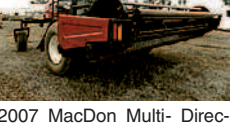
1520 Hay Equipment

1520 Hay Equipment

#1 Balewagons: Buy, Sell, New Holland 2&3 wide self-propelled, pull-type models, parts, tires, manuals.

1520 Hay Equipment

Case IH SBX550 Baler: like new \$18,000. New Holland 166 hay inverter.



Case IH8840 Swather: 1450 hours, 12' specialty crop header, UHMW lined.

2007 MacDon Multi-Directional M150 Swather: 830 engine hours, 585 header hours.

2008 Case SBX550 Baler: excellent condition, 16x18, lightly used, one owner.

2011 New Holland BC5070: small square baler, builds a 14"x16" bale.

2011 New Holland H8080 Swather: with 416 16' discbine header, 1700 hours.

2012 NEW HOLLAND BR7090 Like new condition, BR7090 bale, 5000 bales through it.

AMERICAN EAGLE STACKER 1994 International truck with 2003 Circle C American Eagle bale stacker.

Bale Handler TBH-SR: bale loader, 900 lb. bales, never used, \$1200.

BR7090 New Holland Twine Round Baler: wide, hydraulic pickup flotation tires.

NEW HOLLAND 1030 Stacker: pull type, 2 tie and 3 tie, fully reconditioned.

New Holland 1431 Rotary Swather: Ready to cut hay, \$13,975.

New Holland 1475: 14' sickle mower, pivot tongue, field ready, \$14,750.

New Holland 489 Cutter and Conditioner: using now, \$10,500.

New Holland 575 Baler: hydraulic tension and long chute, \$12,500.

New Holland 1475: 14' sickle mower, pivot tongue, field ready, \$14,750.

New Holland 489 Cutter and Conditioner: using now, \$10,500.

New Holland 575 Baler: hydraulic tension and long chute, \$12,500.

NEW HOLLAND 585 BALER 3 tie, new needle. 1900 hours. Good 4 cylinder motor.

New Holland Baler 570: 14x18, 2-string, stored inside, field ready, \$8000.

Rotary Swather: used New Holland discbine, H7230, very clean used machine.

Round Bale Squeeze for John Deere Global 2 Quick Change Attachment: \$2500.

Simex 4 Disk Hay Mower: 3 point mount, good condition, field ready, \$2500.

1560 Tractors

1560 Tractors

ASSOCIATED TRACTOR SERVICE INC. NEW • USED • REBUILT PARTS PARTS • SERVICE • EQUIPMENT Satisfaction Guaranteed Since 1954

HAYMAKER HEAVEN R.I.P. Reasonable Implement Pricing. (800) 735-1301 • (209) 466-3003

FRESH IN FOR PARTS ONLY NEW HOLLAND BALERS. BB960AS 315 BB960S 316 BB960R 310 BB900 290 BR740A 286

1520 Hay Equipment

1520 Hay Equipment

FARM EQUIPMENT FEH HEADQUARTERS, INC. 731 Airport Road, P.O. Box 1536 Pendleton, OR, 541.276.6222

2008 Challenger LB34B Cutter Baler Tandem, 51,000 bales \$37,500

2005 Hesston 9260 Swather with 16' 9070 rotary header, 28 hrs, well maintained \$39,995

2001 MacDon 9352 3660 hrs, 1999 15' Draper Header \$29,500

Massey Ferguson 2170XD 42,414 bales \$47,500

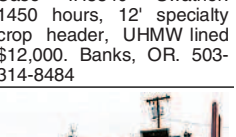
1560 Tractors

1560 Tractors

1520 Hay Equipment

Bale Wrapper 2015 Tube-line TL1000C: 3 point hook up, excellent condition, \$7000.

Case IH SBX550 Baler: like new \$18,000. New Holland 166 hay inverter, like new \$7000.



Case IH8840 Swather: 1450 hours, 12' specialty crop header, UHMW lined.

2007 MacDon Multi-Directional M150 Swather: 830 engine hours, 585 header hours.

2008 Case SBX550 Baler: excellent condition, 16x18, lightly used, one owner.

2011 New Holland BC5070: small square baler, builds a 14"x16" bale.

2011 New Holland H8080 Swather: with 416 16' discbine header, 1700 hours.

2012 NEW HOLLAND BR7090 Like new condition, BR7090 bale, 5000 bales through it.

AMERICAN EAGLE STACKER 1994 International truck with 2003 Circle C American Eagle bale stacker.

Bale Handler TBH-SR: bale loader, 900 lb. bales, never used, \$1200.

BR7090 New Holland Twine Round Baler: wide, hydraulic pickup flotation tires.

NEW HOLLAND 1030 Stacker: pull type, 2 tie and 3 tie, fully reconditioned.

New Holland 1431 Rotary Swather: Ready to cut hay, \$13,975.

New Holland 1475: 14' sickle mower, pivot tongue, field ready, \$14,750.

New Holland 489 Cutter and Conditioner: using now, \$10,500.

New Holland 575 Baler: hydraulic tension and long chute, \$12,500.

New Holland 1475: 14' sickle mower, pivot tongue, field ready, \$14,750.

New Holland 489 Cutter and Conditioner: using now, \$10,500.

New Holland 575 Baler: hydraulic tension and long chute, \$12,500.

NEW HOLLAND 585 BALER 3 tie, new needle. 1900 hours. Good 4 cylinder motor.

New Holland Baler 570: 14x18, 2-string, stored inside, field ready, \$8000.

Rotary Swather: used New Holland discbine, H7230, very clean used machine.

Round Bale Squeeze for John Deere Global 2 Quick Change Attachment: \$2500.

Simex 4 Disk Hay Mower: 3 point mount, good condition, field ready, \$2500.

1560 Tractors

1560 Tractors

1520 Hay Equipment



Stinger 6500 Stacker: 2015, flotation tires, auto lube, led lights, poly rails, 900 hours.

Tedder: 8' H&S hay machine, PTO, dries hay fast, good condition, \$5000.

Wanted: H and S Hay Fluffer, good condition. Southern OR/ Northern CA.

RCO Baits Gophers • Squirrels • Voles • Moles Dealer Locator 1-800-214-2248

1540 Orchard, Vineyard Equip.

(16) Orchard Ladders: Aluminum, 8', 12', 14', and 16'. Newberg, OR.



1997 Littau Over The Row Raspberry, Blueberry Picking Machine: with Christy heads, many updates.



Flory Sweepers: Cab and open station, starting at \$12,500.

Grape Harvesters: Vectur 4x4 and (2) Chisholm/ Ryder with gondolas.

Kubota 4 Basket Hay Tedder: TE4052T, 2 years old, \$6000 OBO.

Kuhn Rake GE: 3200GT, 8' fluffer, 3 years old, works great, \$3500.

Large Supply of Rebuilt New Holland Bale Wagons: Also buying New Holland bale wagons.

Late Model New Holland 1095 with 1032 Mil-Stak Bale Clamp.

New And Used Parts: for all models New Holland bale wagons.

New Holland 1030 Stacker: pull type, 2 tie and 3 tie, fully reconditioned.

New Holland 1431 Rotary Swather: Ready to cut hay, \$13,975.

New Holland 1475: 14' sickle mower, pivot tongue, field ready, \$14,750.

New Holland 489 Cutter and Conditioner: using now, \$10,500.

New Holland 575 Baler: hydraulic tension and long chute, \$12,500.

NEW HOLLAND 585 BALER 3 tie, new needle. 1900 hours.

New Holland Baler 570: 14x18, 2-string, stored inside, field ready, \$8000.

Rotary Swather: used New Holland discbine, H7230, very clean used machine.

Round Bale Squeeze for John Deere Global 2 Quick Change Attachment: \$2500.

Simex 4 Disk Hay Mower: 3 point mount, good condition, field ready, \$2500.

1560 Tractors

1560 Tractors

Zetor TRACTORS Zetor Models: 6421/6441 7421/7441 8421/8441 67 to 90 HP THE TRACTOR STORE (541) 386-2733