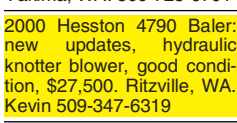


1520 Hay Equipment



1997 John Deere 4890 Swather: 890 14' header, new tires, approximately 3500 hours, \$32,000.



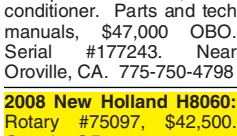
Massey Ferguson 3-point side delivery rake, \$850. John Deere 348 baler, 14x18" chamber, \$5000.



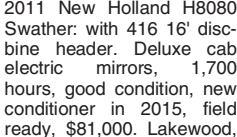
2000 Hesston 4790 Baler: new updates, hydraulic knottter blower, good condition, \$27,500.



2001 HW320 New Holland Swather: 16', 1 season on new conditioner rolls, update on fly wheel, air cab, buddy seat, 2008 hours.



2006 NEW HOLLAND BALEWAGON: BW28, one owner, great condition, always stored indoors.



2007 MacDon Multi-Directional M150 Swather: 830 engine hours, 585 header hours, 14' sickle header.



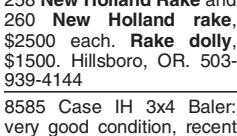
2008 New Holland H8060: Rotary #75097, \$42,500. Ontario, OR. 541-889-7254



2011 New Holland H8080 Swather: with 416 16" disc blade header. Deluxe cab electric mirrors, 1,700 hours.



2012 Massey Ferguson: WFR9770 rotary, 944 hours, #74910, \$97,000. Ontario, OR. 541-889-7254



2012 Massey Ferguson: WFR9770 rotary, 944 hours, #74910, \$97,000. Ontario, OR. 541-889-7254



2013 MASSEY 2170 BALER: 46,000 bales, well maintained, stored undercover when not in use.



2550 Swather. Tractor in excellent condition inside and out. Header runs and cuts but needs work.



8585 Case IH 3x4 Baler: very good condition, recent complete recondition, approximately 35,000 bales.

Balers, Rakes, Mowers: New Holland, John Deere, Massey Ferguson and Fords. I can get you started making hay.

1520 Hay Equipment

Case IH8840 Swather: 1450 hours, 12' specialty crop header, UHMMV lined \$12,000.

Case WDX 1701 Swather: 1590 hours, new 13" New Holland 720 disc mower, 246 hours, new tires, new hydrostatic transmission in 2016.

Ford 501: Sickle bar mower, 7', very good condition, \$500. Baker City, OR. 541-523-7091

John Deere 4890 Swather: 2001, 890 16 foot header with reverser, steel roller conditioner, 1052 hours.

Late Model New Holland 1095 with 1032 Mil-Stak Bale Clamp. \$90,000 or \$65,000 without Mil-Stak.

Mower Conditioner 1412: New Holland, new gear boxes, decent shape, \$10,000.

(2) Stinger 6500 Stackers: (1) 2015, flotation tires, auto lube, led lights, poly rails, 1500 hours.

Freeman 370 Baler: 4 cylinder Deutz, field ready, extra parts, \$21,000 OBO.

Freeman 370 Baler: Like new, only baled (27,000) bales, recent \$7,600 overhaul and new paint.

New Holland 1030 Stacker: pull type, 2 tie and 3 tie, fully reconditioned and field ready.

Freeman 370 Hydro PTO Baler: Like new. 16x22 long chamber, \$16,000.

Freeman 5200: Big bale wagon, good condition, \$35,000.

Hesston 4590: in-line baler, rebuilt last year, \$11,950.

Hesston 4690 Hay Baler: 1346 original hours, excellent condition, \$21,000.

Hesston Baler Model 4900: completely rebuilt, \$40,000.

Hesston 5200: Big bale wagon, good condition, \$35,000.

Heavy Mantis: On a Mack truck. Will pick 3x4 and 4x4 bales and will retrieve stack.

JOHN DEERE 700 (VERMEER) HAY RAKE: Heavy duty hydraulic twin hay rake, adjustable from the tractor.

RCO Baits: Gophers • Squirrels Voles-Moles. Dealer Locator 1-800-214-2248

LOGAN Series 90 Windrower: 2 row, like new condition, \$5000 OBO.

CLERF HARVEST CO. Manufactured by Harvest Co. www.clerfhayclamp.com

Clamps Custom Fit to Carriage Mounts & Loaders

C1300 TELEHANDLER, C950 BALE CLAMP, C3000 HEAVY DUTY SQUEEZE

We Also Rebuild & Repair All Brands of Hay Clamps 888-338-0077

1520 Hay Equipment

Hyster P195A: with Sunny D clamp, good condition, Price reduced: \$22,000

John Deere 1320: mower/conditioner. Clean, good cutter bar, needs gearbox work.

Kuhn GMD 500: 5-disc mower, very good condition, always stored inside.

Large Supply of Rebuilt New Holland Bale Wagons: Also buying New Holland bale wagons.

Late Model New Holland 1095 with 1032 Mil-Stak Bale Clamp.

Mower Conditioner 1412: New Holland, new gear boxes, decent shape, \$10,000.

New and Used Parts: for all models New Holland bale wagons.

New Holland 1118 Swather: 14' grass header, premium condition, \$7500.

New Holland 1496 Haybine Swather: new front tires, excellent shape, 4000 hours.

New Holland 2450 Swather: 14' header, 1626 original hours, excellent condition.

New Holland 500 Baler: Deutz engine, \$9000. Ellensburg, WA.

New Holland BB900 3-Tie Baler: remote moisture meter, 2001 with 637 actual hours.

New Holland BR7090 Twine Round Baler: wide, hydraulic pickup flotation tires.

One set of New Holland basket rakes, ground driven, \$1500.

TAARUP Model #205 Mower: new bearings, \$1500. 16' hay conveyor, \$500.

1530 Potato/Sugar Beet Equip. (2) Used 30"x24" model 1115 Spudnik planter fillers.

(3) LOGAN POTATO PLANTERS Cup style, \$5,500 OBO for all.

LOGAN Series 90 Windrower: 2 row, like new condition, \$5000 OBO.

1520 Hay Equipment

1530 Potato/Sugar Beet Equip.

Parma Potato Harvester: Gentle single drop, new belted chain, \$8,500 OBO.

Spudnik Mega Piler, \$5000. Lockwood 4400, 2 row digger, \$2500.

2004 CLEMENS TLK SINGLE RIPPER: Clemens TLK single shank vibrating ripper. 540 PTO, 40 hp minimum.

Flory Sweepers: Cab and open station, starting at \$20,000.

GRAPE HARVESTER: 2010 Gregoire G1, grape harvester, pull type.

REARS SPRAYER: 400 gallon stainless steel sprayer with constant velocity hitch.

Weiss McNair Hazelnut Harvester: Model 824, excellent condition, \$9500.

Looking for ORCHARD/VINEYARD PROPERTY? Go to Class. 387 Capital Press

TALLMAN LADDERS: Crafted for Safety, Longevity, Stability and Affordability!

Quality Made in the U.S.A. Since 1954

1560 Tractors

2003 John Deere 8120: 200 horse, 4 WD, narrow rear duals, buddy seat.

2006 New Holland TM130: 105 hp, 20 speed, shuttle shift, 4 wheel drive.

2007 John Deere 6415: 960 hours, 95% rubber, quad power shift.

2008 New Holland T6070: 140HP, 3200 hours, 18 speed power shift.

Case IH 8920 Magnum: 2777 hours, 18.4/R42 rear tires with duals.

John Deere 4955: power shift, 3 remotes, \$32,000 OBO.

John Deere 620 Tractor: \$3500. John Deere 820, \$7500.

1996 Case IH Tractor 9370: standard transmission, 7600 hours, 6 new tires.

Ford 1210 with Front Loader: 3 cylinder, diesel, 76 hours on working hour meter.

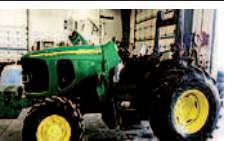
1540 Orchard/Vineyard Equip.

1972 John Deere 4320: 115HP, 8 speed synchro transmission, side console, 2 remotes.

1540 Orchard/Vineyard Equip.

1540 Orchard/Vineyard Equip.

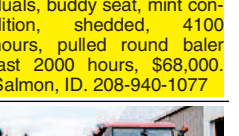
1560 Tractors



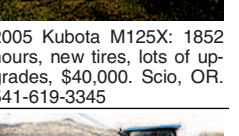
2003 John Deere 8120: 200 horse, 4 WD, narrow rear duals, buddy seat.



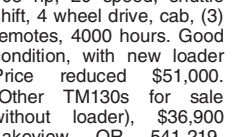
1998 Case IH 8950 Magnum Tractor: front, rear duals, 5700 hours.



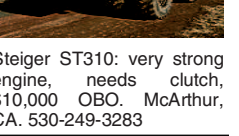
2003 JOHN DEERE 8120: 200 horse, 4 WD, narrow rear duals, buddy seat.



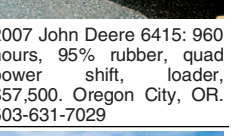
2005 Kubota M125X: 1852 hours, new tires, lots of upgrades, \$40,000.



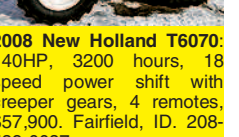
2006 New Holland TM130: 105 hp, 20 speed, shuttle shift, 4 wheel drive.



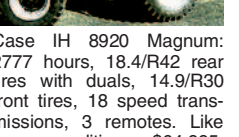
Steiger ST310: very strong engine, needs clutch, \$10,000 OBO.



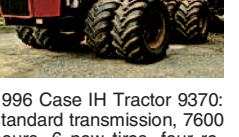
2007 John Deere 6415: 960 hours, 95% rubber, quad power shift.



2008 New Holland T6070: 140HP, 3200 hours, 18 speed power shift.



Case IH 8920 Magnum: 2777 hours, 18.4/R42 rear tires with duals.



John Deere 4955: power shift, 3 remotes, \$32,000 OBO.



John Deere 620 Tractor: \$3500. John Deere 820, \$7500.



1996 Case IH Tractor 9370: standard transmission, 7600 hours, 6 new tires.

1560 Tractors

Attention: Wanted Kubota or John Deere, 4x4 compact tractor with loader/equipment.

#1 Massey Ferguson Tractors: Oregon City, OR. 503-631-3411

International Harvester T-340 Crawler: lightweight, 5 gears, forward plus hi/lo range.

International Model 584: 60 HP, diesel, low hours, excellent condition.

JCB 3220 Fastrac: Great condition. Has been maintained routinely, \$85,000.

John Deere 2020: gas, 54 HP, 2WD, 1966, runs, good condition.

JOHN DEERE 4010: excellent, restored, like new, \$9200.

JOHN DEERE 8400: Front and rear duals, approximately 5000 hours on full rebuild.

John Deere 8410T: 6860 hours, excellent condition, \$47,500.

JOHN DEERE 4440 4WD TRACTOR: 130 hp, quad transmission, 12.4x24 front, 40%, 18.4x38 rear.

Case IH 4494 Tractor with 7000 hours: 200 hp, 4 new inside tires.

Case IH MX240: MFWD, weights, duals, equipped with Trimble Ag Guidance system.

John Deere 8770: 6 new tires, 3pt hitch, 3 remotes, 15-1700 hours on engine rebuild.

John Deere 8870: 350 hp, articulated tractor with PTO \$29,500.

JOHN DEERE 9300: 2000 John Deere, 5673 hours, 3 point, 24 speed transmission.

John Deere 4955: power shift, 3 remotes, \$32,000 OBO.

John Deere 620 Tractor: \$3500. John Deere 820, \$7500.

John Deere 8770: 6 new tires, 3pt hitch, 3 remotes, 15-1700 hours on engine rebuild.

John Deere 8870: 350 hp, articulated tractor with PTO \$29,500.

JOHN DEERE 9300: 2000 John Deere, 5673 hours, 3 point, 24 speed transmission.

John Deere 4955: power shift, 3 remotes, \$32,000 OBO.

John Deere 620 Tractor: \$3500. John Deere 820, \$7500.

JOHN DEERE 9300: 2000 John Deere, 5673 hours, 3 point, 24 speed transmission.

1560 Tractors

John Deere 7330 Tractor: 150 hp, MFWD, 18.4x42" radials, power quad transmission.

John Deere 7420: 2 wheel drive, 3884 hours, 14.9x46 rear tires duals.

John Deere 7700: 4x4, nice tractor. Mechanics special, needs transmission work.

John Deere 8120 GreenStar Equipment: 4 remotes, 2000 hours, \$102,000 OBO.

John Deere 8650, less than 600 hours on motor rebuild, less than 300 hours on new synchros and seals.

John Deere 8650: 6 new tires, 3pt hitch, 3 remotes, 15-1700 hours on engine rebuild.

John Deere 8870: 350 hp, articulated tractor with PTO \$29,500.

JOHN DEERE 9300: 2000 John Deere, 5673 hours, 3 point, 24 speed transmission.

John Deere 4955: power shift, 3 remotes, \$32,000 OBO.

John Deere 620 Tractor: \$3500. John Deere 820, \$7500.

John Deere 8770: 6 new tires, 3pt hitch, 3 remotes, 15-1700 hours on engine rebuild.

John Deere 8870: 350 hp, articulated tractor with PTO \$29,500.

JOHN DEERE 9300: 2000 John Deere, 5673 hours, 3 point, 24 speed transmission.

John Deere 4955: power shift, 3 remotes, \$32,000 OBO.

John Deere 620 Tractor: \$3500. John Deere 820, \$7500.

John Deere 8770: 6 new tires, 3pt hitch, 3 remotes, 15-1700 hours on engine rebuild.

John Deere 8870: 350 hp, articulated tractor with PTO \$29,500.

JOHN DEERE 9300: 2000 John Deere, 5673 hours, 3 point, 24 speed transmission.

John Deere 4955: power shift, 3 remotes, \$32,000 OBO.

John Deere 620 Tractor: \$3500. John Deere 820, \$7500.

John Deere 8770: 6 new tires, 3pt hitch, 3 remotes, 15-1700 hours on engine rebuild.

John Deere 8870: 350 hp, articulated tractor with PTO \$29,500.

JOHN DEERE 9300: 2000 John Deere, 5673 hours, 3 point, 24 speed transmission.

1560 Tractors

John Deere, Model M: good condition, hydraulic lift, runs excellent, \$3000.

8320 John Deere: duals, deluxe cab, \$82,500. Silverton, OR. 503-932-0766

Model 600 Ford Tractor: 1956 high low transmission, excellent condition, \$5200.

Rhino 754: 75HP, 4x4 with 6' Westondorf loader, runs great, \$8500.

14' SCHMEISER ROLLER: 14' Schmeiser roller with transport, 22" rings, \$4800.

Flory Sweepers: Cab and open station, starting at \$20,000.

Great Plains Turbo Till, 24 foot with baskets and rolling harrows, \$32,000.

3 point, Ditch Witch, Backhoe, \$1700 OBO.

2006 14' Northwest Strip Tiller: low acres. Set up on 22-1/2" rows.

2-row Potato Digger: \$2000 OBO. Portland, OR. 503-969-8695

2009 John Deere 995 Switch Plow: 6 bottom, spring reset, like new condition.

(2) 2013 Massey Ferguson 8650 Tractors: 240 hp, Xenon lighting package.

COMPLETE TWO PASS SET UP: 36' Krause drill 10" spacing, Model 5436, hydraulic fold transport.

Hesston BP 25 tub grinder: Farmhand tub grinder, Bushhog 9' rotary mower.

2010 Apache AS1010: 3400 hours, 1000 gallon Poly Tank, 60/90 Boom, 20" spacing.

12' NORTHWEST ROTILLER: Model DHC144SC Northwest Tiller in fair to good shape.

FARM EQUIPMENT HEADQUARTERS, INC. 731 Airport Road, P.O. Box 1536. Massey Ferguson 2170XD Baler \$66,500, \$60,000, \$78,500, \$98,500.

QUICKSILVER POST and POLE HIGHEST QUALITY POST and POLE PRODUCTS. State-of-the-art facility in La Pine, Oregon. Stocking popular sizes such as 8', 10', 12' lengths in 4", 5", 6" and 7" diameter.