

80 Trucks



2007 Dodge 4x4: diesel, manual transmission, 145,000 miles, \$19,500 OBO. Terrebonne, OR. 541-771-8886



1976 International Cab Over: tandem axle, diesel, with 13 speed, 20' rear un-load silage box, \$3995 OBO. Lynden, WA. 360-815-1383



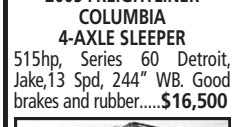
2014 Kenworth T800: 550 Cummins, 18 speed, 62" sleeper, newer tires and wheels, 1 owner, \$109,000. Brooks, OR. Call Steve 503-580-4261



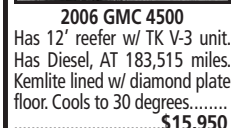
1986 Peterbilt 359: long hood, 3406B recently in-framed, Jake brake end brakesaver, 15 speed transmission, 63" sleeper, 265" wheelbase, lot of recent work to much to list, \$55,000. 2017 Merrit Heritage Hopper Trailer, 40', air ride, scales, aluminum gates, \$40,000. Union, OR. 541-786-8610



BEST SELLERS... Sold everything in the herd but a couple of old bulls. Kestler Ranch, Cottage Grove, OR Call 1-800-882-6789 and sell too!



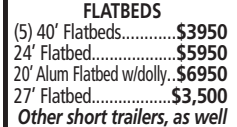
2005 FREIGHTLINER COLUMBIA 4-AXLE SLEEPER 515hp, Series 60 Detroit, Jake, 13 Spd, 244" WB. Good brakes and rubber.....\$16,500



2006 GMC 4500 Has 12' reefer w/ TK V-3 unit. Has Diesel, AT 183,515 miles. Kemlite lined w/ diamond plate floor. Cools to 30 degrees..... \$15,950



1989 FORD F800 Has 14' Flatbed Dump and 28' boom. Has 60" tool storage. Ford diesel and 6 spd manual... \$6,950



FLATBEDS (5) 40' Flatbeds.....\$3950 24' Alum Flatbed w/dolly...\$6950 27' Flatbed.....\$3,500 Other short trailers, as well as 45's and 48's and 53's available!



1970 CLOUGH 6700 GAL ALUM. TANKER Has 14' tongue. Last used for fuel. 60% 24.5 rubber and 75% brakes.....\$5,950

www.pro-truck.com

80 Trucks

1950 GMC Tractor: 940 Fat Cab, partly restored, 671 GMC engine, \$3500. Monroe, OR. 541-321-9088



1990 INTERNATIONAL 940 EAGLE Cummins motor. Runs good. Recent work. Ready to work. Good ranch truck, \$3,900. Prineville, OR 541-477-3101

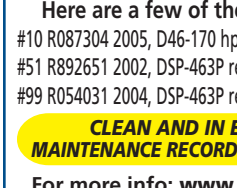


1979 International Cab Over: tandem axle, diesel, with 13 speed, 20' front and rear un-load, tycrop silage box, \$7995 OBO. Lynden, WA. 360-815-1383



CLASSIFIED LINE ADS GET RESULTS 1-800-882-6789 www.capitalpress.com

KENWORTH T800 4-AXLE CHASSIS



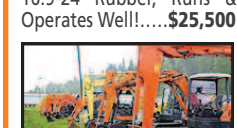
Here are a few of the T800 trucks available: #10 R087304 2005, D46-170 hp rears, 252" WB, 475 hp, \$55,000 #51 R892651 2002, DSP-463P rears, 251"WB, 475 hp....\$55,000 #99 R054031 2004, DSP-463P rears, 250" WB, 475hp....\$55,000

Cummins ISX engines, 18-spd. trans. (RTLO18918B), single spd. Eaton rear-ends 4:10 or 4:11 gears w/locker, Hendrickson Haul-Max walking beam susp.

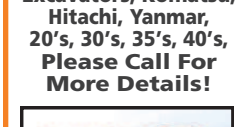
CLEAN AND IN EXCELLENT SHAPE! MAINTENANCE RECORDS - REGULAR OIL SAMPLES

For more info: www.irelandtrucking.com Thomas H. IRELAND INCORPORATED Call Charles Ireland 541-863-1501 Myrtle Creek, OR

VALLEY EQUIPMENT & TRUCK



1997 Hitachi LX 70-2 Wheel Loader 14,000 Lb. 1.7 Cyl. Isuzu 4 8G1T, 87 HP, 5100 hrs, 16.9-24 Rubber, Runs & Operates Well!.....\$25,500



2007 Hitachi ZX20UR 4378lbs, New Hyd. Thumb, Rubber Tracks, 3290 Hours, Offset Boom, Zero Tail Swing.....\$15,900



1997 Furukawa (Hitachi) FL-302 Mini Wheel Loader 5775 Lbs. 4WD, 4 Wheel Star, Articulated, Isuzu Diesel, 29 HP. These are an excellent alternative to a skid Steer Loader...\$15,500

(253) 333-0313 / AFTER HOURS 535 W. Valley Hwy S. / Lonny (206) 793-1190 Pacific, WA 98047 / John (206) 793-8085 www.valleyequipmentandtruck.com

80 Trucks

BEST SELLERS... The phone rang off the hook. Vanveldhuizen Dairy • Turner, OR Call and list your BEST SELLER! 1-800-882-6789



2009 Ford E-150 Cargo Van. 4.6L V-8 & A/T.....\$7,900



2005 F-350 1 Ton C & C. 6.0 P.S. Diesel & A/T. 58" C/A..... \$7,500



1990 Volvo 22' Box Truck. Roll-Up Rear door. Diesel & 5 Spd.....\$4,500



2001 International 4700. 17' Flatbed with 2500# Liftgate. DT-466 & A/T. Hydraulic Brakes. \$12,900



1986 Ford F-700 22' Flatbed with 2500# Liftgate. 370 V-8. 5 & 2.....\$5,900



2005 Sterling LT7500 Crane Truck. 7500 lb. IMT Crane, Miller Big 50 Welder. 3126 Cat & 9-Spd.....\$26,500

80 Trucks

1984 International Harvester S1900: single axle truck, rebuilt, 466 diesel engine, 10 speed. Best offer. Cornelius, OR. 503-969-5977



2012 Ford F-150 XL Extra-Cab 5.0L V-8 & A/T \$11,900



1999 Ford F-350 4X4 Manlift/Utility. 33' w/h. 7.3L P.S. Diesel & A/T....\$14,900



2008 Ford E-450 Shuttle Bus. 16 Seats and Space for 2 Wheel Chairs. 6.0 L.P.S. & A/T.....\$12,900



2001 International 4700. 17' Flatbed with 2500# Liftgate. DT-466 & A/T. Hydraulic Brakes. \$12,900

ChambersMotorCo.com

(503) 663-7200 • Boring, OR

80 Trucks

2004 Freightliner: 3- axle tractor, day cab, Mercedes engine, 10 speed, 470,000 miles, very good shape, \$14,500 OBO. Cornelius, OR. Jeff 503-341-4289



DAY CABS! FREIGHTLINER M2's. Single axle, 3 white/ 1 black, 330 Benz, automatic or 10 speed. LOW MILES. Great condition. Ready to work. Portland, OR. 503-477-4104



Used Buses www.westernbus.com 503-905-0002-1-800-258-2473 WESTERN BUS SALES, INC. 30355 SE Hwy 212 • Boring, OR

80 Trucks

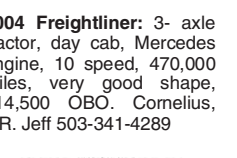


2010 International Pro Star: Cummins engine overhaul by Pape Cat, 13 speed transmission. With 2013 Trinity Belt Trailer 42'. \$75,000 or best offer for both. Klamath Falls, OR 541-285-7396

Wanted: 2003 and up newer trucks, 4x4, with bad diesel engines and/or transmissions. Mulino, OR. 503-314-5947

Wanted: Diesel Engine Cores. R & G Machining and Engine Parts. Mulino, Or. 503-829-6038

80 Trucks



2007 Freightliner M2: 3- axle tractor, day cab, Mercedes engine, 10 speed, 470,000 miles, very good shape, \$14,500 OBO. Cornelius, OR. Jeff 503-341-4289

Wanted: Diesel Engine Cores. R & G Machining and Engine Parts. Mulino, Or. 503-829-6038

NW Diesel Engine & Cylinder Head Supply • 503-314-5947

NOW AVAILABLE: Gas & Diesel Lift Truck Engines SPECIALS! Incidentals Extra

GM 6.2 - 6.5T, installed.....	\$6,850
6.6 Duramax, installed.....	\$9,750
Ford 6.0 Powerstroke engine, installed.....	\$9,500
Ford 6.4 Powerstroke, installed.....	\$10,950
Ford '94-'03 7.3 Powerstroke engine, installed \$7,600	
Cummins '88-'02 5.9 Engine, installed.....	\$7,500
Cummins '03&up, 5.9 C/R Engine, installed.....	\$9,450
Cummins 6.7 installed.....	\$10,250

All engine & cylinder heads exchange must be re-buildable core.

Now Servicing & Repairing All Makes & Models of Skidsteers, Lift Trucks, Mini Excavators & Loaders

PROBLEM WITH YOUR DIESEL NOT RUNNING WELL? NOT RUNNING AT ALL? GIVE US A CALL...WE CAN FIX IT!

R & G MACHINING AND ENGINE PARTS COMPLETE DIESEL MACHINE SHOP AND TRUCK REPAIR WE WORK ON TRUCKS, TRACTORS, LOADERS, & MOTORHOMES MULINO, OREGON: 800-823-6038 SHOP: 503-829-6038

POWER YOUR REGIONAL COMMERCIAL DEALER FOR NEW AND USED

We have New and Pre-Owned Commercial Vehicles Contact us today to see what we have waiting for you!



CALL JIM OR PHIL 1-844-421-5667

POWER FLEET - COMMERCIAL Email: fleet@powerautogroup.com • www.powerautogroup.com

McCord's RAM COMMERCIAL

990 TENNANT WAY • LONGVIEW, WA • Gary Chambers • 877-761-3943 www.mccorddcj.com • gary@mccorddcj.com



2017 Ram 2500 Tradesman Truck, Regular Cab, 8' utility body w/rack, 6.4L V-8, 6 spd auto, 4x4, trailer hitch, P/W, 400+ hp. Stk#R1112 List Price \$51,042 Incentive - \$ 3,000** Sale Price \$46,042*



2017 Ram 3500 Tradesman Truck, Regular Cab, 6.7L I-6cyl Cummins Turbo Diesel, 6 spd auto, 4x4, 385 hp, 900 ft/lb tq, trailer hitch. Stk#R1004 MSRP \$50,345 Incentive - \$ 3,000** Sale Price \$41,538*



2017 Ram 5500 Chassis ST Truck, Crew Cab, 6.4L V-8, 6 spd auto, 4x2, Aluminum 11' Flatbed. Stk#R0961 \$51,614*

SALE 2017 RAM 4500 Regular Cab Stk#R1053

List Price \$66,685 McCord's Discount - \$3,850 Sale Price \$62,835*

CLASS 8 TRUCKS 509-534-9088 • SPOKANE, WA Answering machine after hours



(8) 2007 IH 4300 DT466, Allison Auto, 16' insulated box, or cab & chassis, PTO can be added for additional cost. Clean! \$19,900



2012 MAURER 42' AG HOPPER spring susp, 24.5 steel disc, roll tarp, ladders. Like new, virgin tires. No Fertilizer hauled. \$28,900



2000 FREIGHTLINER CENTURY Inexpensive four axle work truck. Cummins ISX, 10 speed. Engine Overhaul History \$16,900



2005 FREIGHTLINER COLUMBIA Detroit 14.0 500 hp, 10 speed. Engine Overhaul History. Clean! CALL FOR PRICE

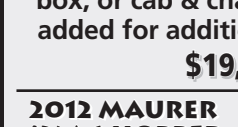


2005 FREIGHTLINER CL112 450HP, 10 spd, AC, Multiple Units, Engine Overhaul History. Clean! \$14,900

LOVELL Truck Sales 50th Anniversary



2010 Freightliner Cascadia 3-Axle day cab. 18 spd auto shift, diff lock + full lockers, DD 15 500hp, PS, AC, CC, power windows, air ride cab, engine brake, aluminum wheels, dump valve, 196" wheelbase, good Dyno.....\$24,500



2012 KW T660 70" Mid Roof 280" wheelbase, PAC CAR MX-455, auto shift, super singles, 500k miles, good dyno.....\$26,500



2004 48' Curtain Van Transcraft Sliding tandems, very clean. \$18,500



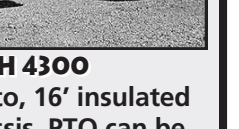
2011 Cascadia Freightliner Mid-Roof Sleeper DD-15, Jake brake.....\$29,500



2006 Peterbilt 378 3-Axle Day Cab CAT C-15, 470hp, 10 spd., engine brake, PS, AC, CC, Good Dyno.....\$28,500



1998 Utility Reefer 48x102 trailer, newer carrier unit with low hrs.....\$8,500



2002 Ford F650, CAT 3126, auto transmission, PS, AC, cruise control.....\$8,500



2006 GMC C-7500 Diesel, Automatic, 24' box lift gate. PS, AC, cruise control.....\$9,500



2005 Petebilt 330 Tandem Axle Cab & Chassis, Cummins ISB 315, 10 speed, Hendrickson Walking Beam, 274" WB.....\$24,500



2007 International 4400 Reefer DT-466, 6 speed transmission... \$18,500

COMING IN THIS WEEK 2013 Peterbilt 389 4-Axle 36" H/S Reefer, Cummins 550 HP, 18 Speed, Double Lockers, 280" WB... Call For More Details



2006 Peterbilt 378 3-Axle Day Cab CAT C-15, 470hp, 10 spd., engine brake, PS, AC, CC, Good Dyno.....\$28,500



2005 Freightliner FL112 3-Axle Day Cab MBE# 4000, 10 spd, 40K lb rears, 165" WB, PS, AC, cruise control, engine brake, super clean & low miles. 138,030 miles.....\$25,500 ALSO a 2006 3-axle Columbia Freightliner, super clean, 191,669 miles. Same specs as above.....\$26,500



1998 Utility Flatbed 48' Flated with a Princeton hookcup\$9,500



2005 Peterbilt 385 3-Axle Day Cab CAT C-13, 430 hp, 10 spd., 4.11 gears, PS, AC, CC, Jake, 184" WB, good Dyno.....\$24,500



2006 Freightliner Tandem Axle Flat Bed, 8LL Trans., Tuff Track Suspension, 14,700 Front Axle, 256" WB.....\$24,500

1-800-451-0012 LOVELLTRUCKSALES.COM (503) 266-5886 • FAX (503) 266-6903 680 SW 1st (Hwy 99 East) • Canby, OR

*Plus all applicable License, Taxes and Fees. **See Dealer for Incentive Qualification.

17-2/#8

17-2/#8

17-2/#8

17-2/#8

17-2/#8

17-2/#8

17-2/#8