

1560 Tractors

Attention: Wanted Kubota or John Deere, 4x4 compact tractor with loader/ equipment. Carlton, OR. 503-550-0094



CASE 7210 4WD TRACTOR
130 hp, power shift 18F - 4R, 14.9x30 fronts, 14.9x46 rear with duals, rubber good, full set front weights, 3 remotes, 540/ 1000 PTO, straight, cab clean, everything works, runs great, 7400 hours. Ellensburg, WA 509-201-0775



Case IH 4494 Tractor with 7000 hours: 200 hp, 4 new inside tires, PTO and 3-Point hitch. Everything works, no leaks, good condition, \$21,000. Pictures available. Middleton, ID. 208-477-8019



Case IH 8920 Magnum: 2777 hours, 18.4/R42 rear tires with duals, 14.9/R30 front tires, 18 speed transmissions, 3 remotes. Like new condition, \$64,995. Othello, WA. 509-989-0084

Model 600 Ford Tractor
1956 high low transmission, excellent condition. \$5200. Oregon Coast, 503-368-6442



Case IH MX240: MFWD, weights, duals, equipped with Trimble Ag Guidance system, set up for row crop, 12,000 hours, good condition, can haul, \$35,000. Canby CA. 530-640-1982



Ford 1210 with Front Loader: 3 cylinder, diesel, 76 hours on working hour meter, \$6500. Caldwell, ID. 208-989-7873

International 986: 105 hp, air conditioning, nice cab, runs great, \$9,000 OBO. Woodburn, OR. 503-984-1237

JCB 3220 Fastrac: Great condition. Has been maintained routinely, \$85,000. Jefferson, OR. 541-327-1645



JOHN DEERE 2040:
John Deere 2040 with Edwards fork lift, 3900 hours, two stage mast, excellent condition, always stored, \$7500. The Dalles, OR. Evenings 541-296-8506 or cell 541-993-5302



JOHN DEERE 4440 4WD TRACTOR
130 hp, quad transmission, 12.4x24 fronts, 40%, 18.4x38 rear, new rubber, has hubs for duals, front weights, 2 remotes, 540/1000 PTO, straight, cab clean, everything works, runs great, 12,000 hours, previous owner had engine rebuilt. Ellensburg, WA. 509-201-0775

John Deere 620 Tractor: \$3500, John Deere 820, \$7500. Good condition, both run. Castle Rock, WA. 360-749-4422

John Deere 7330 Tractor: 150 hp, MFWD, 18.4x42" radiials, power quad transmission, 16 speed, deluxe cab, 423 hours, always shedded, \$89,000. Christmas Valley, OR. 541-576-2615, 541-410-2976

John Deere 7420: 2 wheel drive, 3884 hours, 14.9x46 rear tires duals, 11.00x20 front, \$40,000. **2013 Twinstar 2030-G2** rake, 5 bar basket, \$22,000. **Monosem NG4**, 4-row planter, \$12,000. Harrah, WA. 509-728-2701



John Deere 7700: 4x4, nice tractor. Mechanics special, needs transmission work, \$24,995 OBO. Lynden, WA. 360-815-1383



John Deere 8650, less than 600 hours on motor rebuild, less than 300 hours on new synchros and seals, 50% tires, starts, runs and ready to work, \$25,000 OBO. Amity, OR. 503-435-7001, 503-435-8422

1560 Tractors

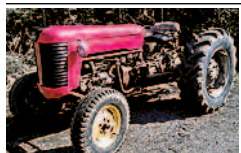
JOHN DEERE 8400:
Front and rear duals, approximately 5000 hours on full rebuild, good shape, \$47,500. Hubbard, OR. 503-710-0105

John Deere 8410T: 6860 hours, excellent condition, \$47,500. Harrah, WA. 509-728-4495



John Deere 8770: 6 new tires, 3pt hitch, 3 remotes, 15-17000 hours on engine rebuild, \$34,000. Silverton, OR. 503-932-0766

John Deere 8870: 350 hp, articulated tractor with PTO \$29,500. John Deere 8560, 235 hp, articulated tractor with PTO, \$27,500. Rigby, ID. 503-939-9241



MASSEY FERGUSON 65 50HP DIESEL 2WD TRACTOR
Perkins Diesel 4 cylinder. Good condition, very reliable tractor, \$3,800. Onalaska, WA. Call 360-701-9932.

New Holland 3415 Tractor: runs great, low hours, \$5200. Amboy, WA. 360-606-6348

Rhino 754: 75HP, 4x4 with 6' Westendorf loader, runs great, \$8500. Clatskanie, OR. 503-728-3309



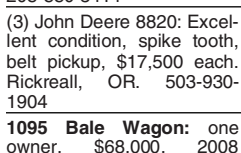
Steiger ST310: very strong engine, needs clutch, \$10,000 OBO. McArthur, CA. 530-249-3283



2010 Apache AS1010:
3400 hours, 1000 gallon Poly Tank, 60/90 Boom, 20" spacing with 10 section, 5 nozzle body, Envizo pro controller, auto steer, auto boom, accu boom, Cummins engine, 6 speed transmission, hydraulic wheel, adjust 120"-144", \$90,000 OBO. Nampa, ID. Brian 208-880-3414

(3) John Deere 8820: Excellent condition, spike tooth, belt pickup, \$17,500 each. Rickreall, OR. 503-930-1904

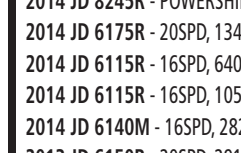
1095 Bale Wagon: one owner, \$68,000. **2008 Massey Ferguson 1843** baler, 912 hours, super clean, \$50,000. **7740 Ford tractor**, runs good, \$15,000. All field ready. Hilmar, CA. 209-595-4675



2016 Parma Rollharrow: 12', crowfoot front and rear, leveling bar, s-tines, grain drill hitch, DEMO UNIT, ID #30417, \$26,500, Baker City, OR. 1-800-743-5924, Jon 541-403-2125



(2) 2013 Massey Ferguson 8650 Tractors: 240 hp, Xenon lighting package, CVT transmission, MFWD, speed steer, front suspension, cab suspension, 5 SCV's rear duals, front and rear weights tires at 85%, front tires 420/85R/34, rear tires 480/80R/50, dual beacons, telescope power mirrors, quick hitch, tractors are one serial number apart, like new condition. One tractor has 870 hours other has 984 hours, \$132,000 each OBO. Bend, OR. 541-420-7124



2016 Parma Rollharrow: 12', crowfoot front and rear, leveling bar, s-tines, grain drill hitch, DEMO UNIT, ID #30417, \$26,500, Baker City, OR. 1-800-743-5924, Jon 541-403-2125



2016 Parma Rollharrow: 12', crowfoot front and rear, leveling bar, s-tines, grain drill hitch, DEMO UNIT, ID #30417, \$26,500, Baker City, OR. 1-800-743-5924, Jon 541-403-2125

2016 Parma Rollharrow: 12', crowfoot front and rear, leveling bar, s-tines, grain drill hitch, DEMO UNIT, ID #30417, \$26,500, Baker City, OR. 1-800-743-5924, Jon 541-403-2125

2016 Parma Rollharrow: 12', crowfoot front and rear, leveling bar, s-tines, grain drill hitch, DEMO UNIT, ID #30417, \$26,500, Baker City, OR. 1-800-743-5924, Jon 541-403-2125

2016 Parma Rollharrow: 12', crowfoot front and rear, leveling bar, s-tines, grain drill hitch, DEMO UNIT, ID #30417, \$26,500, Baker City, OR. 1-800-743-5924, Jon 541-403-2125

2016 Parma Rollharrow: 12', crowfoot front and rear, leveling bar, s-tines, grain drill hitch, DEMO UNIT, ID #30417, \$26,500, Baker City, OR. 1-800-743-5924, Jon 541-403-2125

2016 Parma Rollharrow: 12', crowfoot front and rear, leveling bar, s-tines, grain drill hitch, DEMO UNIT, ID #30417, \$26,500, Baker City, OR. 1-800-743-5924, Jon 541-403-2125

2016 Parma Rollharrow: 12', crowfoot front and rear, leveling bar, s-tines, grain drill hitch, DEMO UNIT, ID #30417, \$26,500, Baker City, OR. 1-800-743-5924, Jon 541-403-2125

2016 Parma Rollharrow: 12', crowfoot front and rear, leveling bar, s-tines, grain drill hitch, DEMO UNIT, ID #30417, \$26,500, Baker City, OR. 1-800-743-5924, Jon 541-403-2125

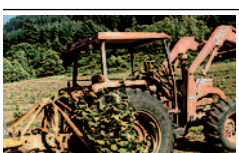
1600 Farm Equipment

80' Wilmar Booms: Field ready, good condition. Jefferson, OR. 541-327-1645.

4-Row Mechanical Transplanter: also Alamo combination roadside and rear mower. Near Salem, OR. Call 503-932-0400 for details and prices.



2009 John Deere 995 Switch PLOW: 6 bottom, spring reset, like new condition, \$17,000 OBO. Carlton, OR. 503-849-5316



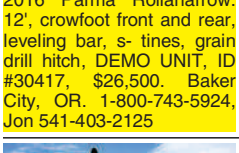
12' NORTHWEST ROTOTILLER:
Model DHC1443C Northwest Tiller in fair to good shape. Tiller teeth in near new condition. Just tilled 40 acres in Tidewater, OR. \$7,500 Call 907-240-1473.



8450 John Deere Green Drill 12', \$4500. 12' Brillion culpacker, \$3500. Hillsboro, OR. 503-939-4144



14' SCHMEISER ROLLER
14' Schmeiser roller with transport. 22" rings, \$5600. Boring, OR. Jeff 503-720-8434.



(2) 2013 Massey Ferguson 8650 Tractors: 240 hp, Xenon lighting package, CVT transmission, MFWD, speed steer, front suspension, cab suspension, 5 SCV's rear duals, front and rear weights tires at 85%, front tires 420/85R/34, rear tires 480/80R/50, dual beacons, telescope power mirrors, quick hitch, tractors are one serial number apart, like new condition. One tractor has 870 hours other has 984 hours, \$132,000 each OBO. Bend, OR. 541-420-7124



(2) 2013 Massey Ferguson 8650 Tractors: 240 hp, Xenon lighting package, CVT transmission, MFWD, speed steer, front suspension, cab suspension, 5 SCV's rear duals, front and rear weights tires at 85%, front tires 420/85R/34, rear tires 480/80R/50, dual beacons, telescope power mirrors, quick hitch, tractors are one serial number apart, like new condition. One tractor has 870 hours other has 984 hours, \$132,000 each OBO. Bend, OR. 541-420-7124



(2) 2013 Massey Ferguson 8650 Tractors: 240 hp, Xenon lighting package, CVT transmission, MFWD, speed steer, front suspension, cab suspension, 5 SCV's rear duals, front and rear weights tires at 85%, front tires 420/85R/34, rear tires 480/80R/50, dual beacons, telescope power mirrors, quick hitch, tractors are one serial number apart, like new condition. One tractor has 870 hours other has 984 hours, \$132,000 each OBO. Bend, OR. 541-420-7124

(2) 2013 Massey Ferguson 8650 Tractors: 240 hp, Xenon lighting package, CVT transmission, MFWD, speed steer, front suspension, cab suspension, 5 SCV's rear duals, front and rear weights tires at 85%, front tires 420/85R/34, rear tires 480/80R/50, dual beacons, telescope power mirrors, quick hitch, tractors are one serial number apart, like new condition. One tractor has 870 hours other has 984 hours, \$132,000 each OBO. Bend, OR. 541-420-7124

(2) 2013 Massey Ferguson 8650 Tractors: 240 hp, Xenon lighting package, CVT transmission, MFWD, speed steer, front suspension, cab suspension, 5 SCV's rear duals, front and rear weights tires at 85%, front tires 420/85R/34, rear tires 480/80R/50, dual beacons, telescope power mirrors, quick hitch, tractors are one serial number apart, like new condition. One tractor has 870 hours other has 984 hours, \$132,000 each OBO. Bend, OR. 541-420-7124

(2) 2013 Massey Ferguson 8650 Tractors: 240 hp, Xenon lighting package, CVT transmission, MFWD, speed steer, front suspension, cab suspension, 5 SCV's rear duals, front and rear weights tires at 85%, front tires 420/85R/34, rear tires 480/80R/50, dual beacons, telescope power mirrors, quick hitch, tractors are one serial number apart, like new condition. One tractor has 870 hours other has 984 hours, \$132,000 each OBO. Bend, OR. 541-420-7124

(2) 2013 Massey Ferguson 8650 Tractors: 240 hp, Xenon lighting package, CVT transmission, MFWD, speed steer, front suspension, cab suspension, 5 SCV's rear duals, front and rear weights tires at 85%, front tires 420/85R/34, rear tires 480/80R/50, dual beacons, telescope power mirrors, quick hitch, tractors are one serial number apart, like new condition. One tractor has 870 hours other has 984 hours, \$132,000 each OBO. Bend, OR. 541-420-7124

(2) 2013 Massey Ferguson 8650 Tractors: 240 hp, Xenon lighting package, CVT transmission, MFWD, speed steer, front suspension, cab suspension, 5 SCV's rear duals, front and rear weights tires at 85%, front tires 420/85R/34, rear tires 480/80R/50, dual beacons, telescope power mirrors, quick hitch, tractors are one serial number apart, like new condition. One tractor has 870 hours other has 984 hours, \$132,000 each OBO. Bend, OR. 541-420-7124

(2) 2013 Massey Ferguson 8650 Tractors: 240 hp, Xenon lighting package, CVT transmission, MFWD, speed steer, front suspension, cab suspension, 5 SCV's rear duals, front and rear weights tires at 85%, front tires 420/85R/34, rear tires 480/80R/50, dual beacons, telescope power mirrors, quick hitch, tractors are one serial number apart, like new condition. One tractor has 870 hours other has 984 hours, \$132,000 each OBO. Bend, OR. 541-420-7124

(2) 2013 Massey Ferguson 8650 Tractors: 240 hp, Xenon lighting package, CVT transmission, MFWD, speed steer, front suspension, cab suspension, 5 SCV's rear duals, front and rear weights tires at 85%, front tires 420/85R/34, rear tires 480/80R/50, dual beacons, telescope power mirrors, quick hitch, tractors are one serial number apart, like new condition. One tractor has 870 hours other has 984 hours, \$132,000 each OBO. Bend, OR. 541-420-7124

(2) 2013 Massey Ferguson 8650 Tractors: 240 hp, Xenon lighting package, CVT transmission, MFWD, speed steer, front suspension, cab suspension, 5 SCV's rear duals, front and rear weights tires at 85%, front tires 420/85R/34, rear tires 480/80R/50, dual beacons, telescope power mirrors, quick hitch, tractors are one serial number apart, like new condition. One tractor has 870 hours other has 984 hours, \$132,000 each OBO. Bend, OR. 541-420-7124

(2) 2013 Massey Ferguson 8650 Tractors: 240 hp, Xenon lighting package, CVT transmission, MFWD, speed steer, front suspension, cab suspension, 5 SCV's rear duals, front and rear weights tires at 85%, front tires 420/85R/34, rear tires 480/80R/50, dual beacons, telescope power mirrors, quick hitch, tractors are one serial number apart, like new condition. One tractor has 870 hours other has 984 hours, \$132,000 each OBO. Bend, OR. 541-420-7124

(2) 2013 Massey Ferguson 8650 Tractors: 240 hp, Xenon lighting package, CVT transmission, MFWD, speed steer, front suspension, cab suspension, 5 SCV's rear duals, front and rear weights tires at 85%, front tires 420/85R/34, rear tires 480/80R/50, dual beacons, telescope power mirrors, quick hitch, tractors are one serial number apart, like new condition. One tractor has 870 hours other has 984 hours, \$132,000 each OBO. Bend, OR. 541-420-7124

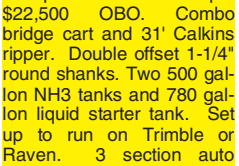
(2) 2013 Massey Ferguson 8650 Tractors: 240 hp, Xenon lighting package, CVT transmission, MFWD, speed steer, front suspension, cab suspension, 5 SCV's rear duals, front and rear weights tires at 85%, front tires 420/85R/34, rear tires 480/80R/50, dual beacons, telescope power mirrors, quick hitch, tractors are one serial number apart, like new condition. One tractor has 870 hours other has 984 hours, \$132,000 each OBO. Bend, OR. 541-420-7124

(2) 2013 Massey Ferguson 8650 Tractors: 240 hp, Xenon lighting package, CVT transmission, MFWD, speed steer, front suspension, cab suspension, 5 SCV's rear duals, front and rear weights tires at 85%, front tires 420/85R/34, rear tires 480/80R/50, dual beacons, telescope power mirrors, quick hitch, tractors are one serial number apart, like new condition. One tractor has 870 hours other has 984 hours, \$132,000 each OBO. Bend, OR. 541-420-7124

1600 Farm Equipment

2015 Littau Harvester ORXL, excellent condition, 600 hours, \$178,000. Woodburn, OR. 503-951-2076

COMPLETE TWO PASS SET UP:
36" Krause drill 10" spacing. Model 5436, hydraulic fold transport. Good shape. \$22,500 OBO. Combo budget cart and 31" Calkins ripper. Double offset 1-1/4" round shanks. Two 500 gallon NH3 tanks and 780 gallon liquid starter tank. Set up to run on Trimble or Raven. 3 section auto boom. Heavy duty hillside spindles, 23.1/26 diamond tread tires. Field ready, \$25,000 OBO. Prescott, WA. Call 509-629-2358



(2) Clipper 298 Seed Cleaners: \$6500/ each. (2) Super 29D, \$4000 each. Stanwood, WA. 360-770-1899

60' Stainless Steel Spray Booms: with hydraulics and mast. **1984 International** single axle truck, 466 diesel, 10 speed, set up for 3 ton dry fertilizer box, front flotation tires, recent engine rebuild. Cornelius, OR. Dave 503-969-5977

8450 John Deere Green Drill 12', \$4500. 12' Brillion culpacker, \$3500. Hillsboro, OR. 503-939-4144

(2) Clipper 298 Seed Cleaners: \$6500/ each. (2) Super 29D, \$4000 each. Stanwood, WA. 360-770-1899

60' Stainless Steel Spray Booms: with hydraulics and mast. **1984 International** single axle truck, 466 diesel, 10 speed, set up for 3 ton dry fertilizer box, front flotation tires, recent engine rebuild. Cornelius, OR. Dave 503-969-5977

8450 John Deere Green Drill 12', \$4500. 12' Brillion culpacker, \$3500. Hillsboro, OR. 503-939-4144

(2) Clipper 298 Seed Cleaners: \$6500/ each. (2) Super 29D, \$4000 each. Stanwood, WA. 360-770-1899

60' Stainless Steel Spray Booms: with hydraulics and mast. **1984 International** single axle truck, 466 diesel, 10 speed, set up for 3 ton dry fertilizer box, front flotation tires, recent engine rebuild. Cornelius, OR. Dave 503-969-5977

8450 John Deere Green Drill 12', \$4500. 12' Brillion culpacker, \$3500. Hillsboro, OR. 503-939-4144

(2) Clipper 298 Seed Cleaners: \$6500/ each. (2) Super 29D, \$4000 each. Stanwood, WA. 360-770-1899

60' Stainless Steel Spray Booms: with hydraulics and mast. **1984 International** single axle truck, 466 diesel, 10 speed, set up for 3 ton dry fertilizer box, front flotation tires, recent engine rebuild. Cornelius, OR. Dave 503-969-5977

8450 John Deere Green Drill 12', \$4500. 12' Brillion culpacker, \$3500. Hillsboro, OR. 503-939-4144

(2) Clipper 298 Seed Cleaners: \$6500/ each. (2) Super 29D, \$4000 each. Stanwood, WA. 360-770-1899

60' Stainless Steel Spray Booms: with hydraulics and mast. **1984 International** single axle truck, 466 diesel, 10 speed, set up for 3 ton dry fertilizer box, front flotation tires, recent engine rebuild. Cornelius, OR. Dave 503-969-5977

8450 John Deere Green Drill 12', \$4500. 12' Brillion culpacker, \$3500. Hillsboro, OR. 503-939-4144

(2) Clipper 298 Seed Cleaners: \$6500/ each. (2) Super 29D, \$4000 each. Stanwood, WA. 360-770-1899

60' Stainless Steel Spray Booms: with hydraulics and mast. **1984 International** single axle truck, 466 diesel, 10 speed, set up for 3 ton dry fertilizer box, front flotation tires, recent engine rebuild. Cornelius, OR. Dave 503-969-5977

8450 John Deere Green Drill 12', \$4500. 12' Brillion culpacker, \$3500. Hillsboro, OR. 503-939-4144

(2) Clipper 298 Seed Cleaners: \$6500/ each. (2) Super 29D, \$4000 each. Stanwood, WA. 360-770-1899

60' Stainless Steel Spray Booms: with hydraulics and mast. **1984 International** single axle truck, 466 diesel, 10 speed, set up for 3 ton dry fertilizer box, front flotation tires, recent engine rebuild. Cornelius, OR. Dave 503-969-5977

8450 John Deere Green Drill 12', \$4500. 12' Brillion culpacker, \$3500. Hillsboro, OR. 503-939-4144

(2) Clipper 298 Seed Cleaners: \$6500/ each. (2) Super 29D, \$4000 each. Stanwood, WA. 360-770-1899

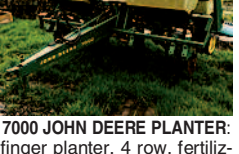
60' Stainless Steel Spray Booms: with hydraulics and mast. **1984 International** single axle truck, 466 diesel, 10 speed, set up for 3 ton dry fertilizer box, front flotation tires, recent engine rebuild. Cornelius, OR. Dave 503-969-5977

8450 John Deere Green Drill 12', \$4500. 12' Brillion culpacker, \$3500. Hillsboro, OR. 503-939-4144

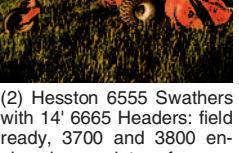
(2) Clipper 298 Seed Cleaners: \$6500/ each. (2) Super 29D, \$4000 each. Stanwood, WA. 360-770-1899

1600 Farm Equipment

7000 JOHN DEERE PLANTER: finger planter, 4 row, fertilizer boxes, \$5000. St. Paul, OR. 971-254-5999



Flory Sweepers: Cab and open station, starting at \$20,000. Silverton, OR. 503-932-0766



Great Plains Turbo Till, 24 foot with baskets and rolling harrows, \$32,000. 16 Foot Case IH tandem disc, \$3,000. 415 International 25 foot roller harrow, \$12,000. Harrah, WA. 509-949-9243