

Subscribe to our weekly Idaho email newsletter at [CapitalPress.com/newsletters](http://CapitalPress.com/newsletters)

# Idaho



Courtesy of Idaho DEQ  
A farmer burns his field after harvest to clear it of pests and disease. Idaho is seeking approval from the Environmental Protection Agency for a plan to regulate field burning.

## Change to Idaho's field burning program heads to EPA for approval

By SEAN ELLIS  
Capital Press

BOISE — A proposed change to Idaho's field burning program has been approved by state regulators and lawmakers and will now go to the Environmental Protection Agency for a final OK.

The change, which is meant to avoid a major reduction in allowable burn days for farmers, is opposed by some environmental and public health groups but supported by farm organizations.

Farmers testified in favor of a bill that makes the amendment during Idaho's recent legislative session and lawmakers supported it by a combined vote of 91-12.

Sen. Mark Harris, a Republican rancher from Soda Springs, said he didn't believe opponents' claims that the change would endanger public health. He said it would actually increase the number of allowable burn days, which would spread field burning over a longer period and thus help protect public health.

"I think it will be beneficial to everybody who burns crop residue across the state," Harris said. "It gives growers more days to burn their crop residue and it gives (the Idaho Department of Environmental Quality) more days to manage their program."

Idaho farmers burn about 40,000 to 50,000 acres a year.

DEQ can approve a burn request only if ozone and small particulate matter (PM 2.5) levels aren't expected to exceed 75 percent of the national standard for those air pollutants.

But the federal standard for ozone was tightened in October 2015, which will reduce the number of allowable burn days in Idaho by 33-50 percent, according to DEQ estimates.

To avoid that, DEQ has proposed loosening Idaho's ozone threshold to 90 percent of the federal standard. Environmental and public health advocate groups wanted to tighten the state's PM 2.5 threshold to offset the loosening of the ozone standard.

DEQ officials said the science doesn't support tightening the PM 2.5 threshold.

"If we thought this rule was endangering public health, we would not have proposed the change in the

## Magic Valley carving carrot seed niche

By JOHN O'CONNELL  
Capital Press

JEROME, Idaho — Cody Bingham is trying a new cash crop this season that's labor-intensive to raise, but is nonetheless gaining a foothold in the Magic Valley.

The Jerome-area grower chose to raise carrots for seed as a replacement for sweet corn, having lost his buyer for that crop.

His workers recently hand-planted a 36-acre carrot field — one of the largest crops of carrots for seed in the state. Idaho has three major carrot seed buyers — Monsanto, Bayer Crop Science and Bejo Seeds, Inc. An average field for their growers is 8 to 10 acres.

Carrot seed has been raised for decades in Southern Idaho from Magic Valley through Treasure Valley, but Bejo — an Oceano, Calif.-based subsidiary of the Northern Holland company Bejo Zaden — has been seeking to grow its Magic Valley presence lately.

"I see substantial growth potential for Bejo in carrot production in (Magic Valley)," said Richard Pollard, with Bejo. "Our growth is driven by our sales and by our expanding product line."

Bingham said he decided to try the crop at the suggestion of a friend who works for Bejo. Carrots require a winter vernalization period to produce seed the following season. Some growers plant true seeds in the fall, which elevates the risk of winter kill. Bingham opted to plant stecklings — tiny carrots raised in Arizona and chilled in a cooler to mimic overwintering. Sugar beet seed can be produced through a similar process.

Carrot tops are swathed and left to dry in rows for pickup, and the roots are left to decompose in the soil. Bingham said seed carrots require less fertilizer than potatoes, but more than sugar beets and corn.

"With other markets as far as wheat, corn and even sugar being a bit softer and tighter, the potential for this being a good addition to the



Courtesy of Cody Bingham  
Workers for Jerome, Idaho, grower Cody Bingham prepare to plant carrots to produce seed. Carrot seed production has been gaining traction as an alternative crop in Magic Valley.

farm as far as profitability seemed attractive," Bingham said.

Brian Beckman, a field representative with the Monsanto subsidiary Seminis Vegetable Seed, estimates 500 to 600 acres of seed carrots are raised in Magic Valley and 800 to 1,000 acres are produced in Treasure Valley. Prices vary widely, from \$4.50 per pound to about \$32 per pound, depending on the variety.

"It's definitely a high-

er-risk crop," Beckman said. "The yield isn't as stable as a dry bean or field corn crop or some of those other ones, but at the same time, the price has held."

The Magic Valley's cool nights have enabled its growers to carve a niche by producing some valuable and tough-to-raise European varieties, such as Nantes. Brett Lolley, Idaho production manager with Seminis, said his company has grown from about 30 acres in Mag-

ic Valley about six years ago to roughly 200 acres, with regional acreage leveling off recently.

Both Seminis and Bejo have carrot seed research facilities in Payette, and Pollard said Bejo plans to develop independent research capabilities in Magic Valley.

Pollard said Bejo now cleans carrot seed in a Magic Valley facility developed for other purposes and hopes to build its own seed-cleaning facility.

## SPRING SAVINGS

12 month waiver -OR- 3 years at 1.9% -OR- 5 years at 2.9%

All financing on approved credit. See dealer for list of qualifying units for financing specials.

### TRACTORS



**JD 6105E**, 506 hours, standard cab, 2WD, 12X12 PR trans., air seat, 3 remotes, 460-38 rear singles.....**\$52,500** Fall River Mills G0001682



**JD 5085M**, 417 hours, cab, MFWD, 16X16 PR trans., 3 rear remotes, 2 mid remotes, air seat.....**\$55,800** Fall River Mills GG400287



**Kubota L6060**, 37 hours, cab, MFWD, hydrostatic, 540 PTO, LA1055 loader, R4 tires, like new.....**\$47,500** Donald 60D31089



**JD 5680**, 664 hours, small grain, 35% Rahco leveler, 635F platform and cart, A/T ready.....**\$347,600** Walla Walla 747035



**JD 9600**, 5660 hours, small grain, grass seed combine, 914W BPU platform, straw chopper.....**\$42,000** Harrisburg 0X631710



**JD 5680**, 881 hours, small grain, 35% Rahco Leveler, 635F platform and cart, A/T ready.....**\$388,700** Four Lakes 755668

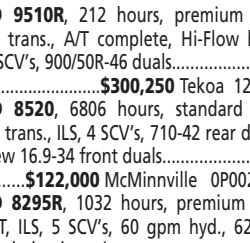


**JD 690**, 619 hours, small grain, 27% Hillco leveler, duals, 635F platform and cart.....**\$409,800** Walla Walla D0765123

### TRACTORS



**MF 8660**, 3311 hours, susp cab, susp frt axle, CVT, 4 remotes, 480-50 rear duals, weight package.....**\$123,000** Madras V193047



**JD 9510R**, 212 hours, premium cab, PS trans., A/T complete, Hi-Flow hyd., 5 SCV's, 900/50R-46 duals.....**\$300,250** Tekoa 12464



**JD 8250**, 6806 hours, standard cab, PS trans., ILS, 4 SCV's, 710-42 rear duals, new 16.9-34 front singles.....**\$122,000** McMinnville 0P002681



**JD 825R**, 1032 hours, premium cab, I/V, ILS, 5 SCV's, 60 gpm hyd., 620-46 duals, leather trim.....**\$235,000** Salem 93728



**MF 8650**, 1553 hours, premium cab, CVT, susp. axle, 4 SCV's, 480-50 rear duals, 480-34 front singles.....**\$134,999** Merrill C048047

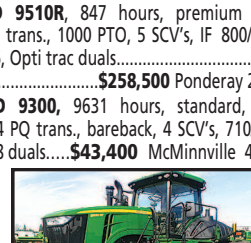


**JD 9560R**, 604 hours, premium cab, Autotrac ready, 520/85R-42 triples, 5 SCV's, bareback.....**\$266,200** Moscow 74729

### TRACTORS



**CASE IH 435**, 2745 hours, 4WD, PS trans., 55gpm pump, 4 remotes, 710/70R-38 duals.....**\$162,250** Four Lakes 117203



**JD 9510R**, 847 hours, premium cab, PS trans., 1000 PTO, 5 SCV's, IF 800/55R-46, Opti trac duals.....**\$258,500** Ponderay 2997



**JD 9300**, 9631 hours, standard cab, 24 PQ trans., bareback, 4 SCV's, 710/70R-38 duals.....**\$43,400** McMinnville 40643

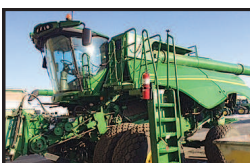


**JD 9560R**, 1037 hours, premium cab, 36" tracks, PS trans., 5 remotes, 1000PTO, A/T ready.....**\$292,500** Fall River Mills 902075



**Challenger MT685D**, 670 hours, premium cab, CVT, susp. axle, 5 SCV's, 520-46 rear duals, 480-34 front duals.....**\$230,000** Salem ENGL1032

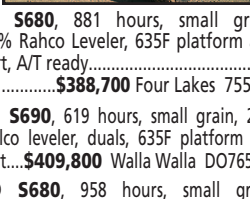
### COMBINES



**JD 5680**, 664 hours, small grain, 35% Rahco leveler, 635F platform and cart, A/T ready.....**\$347,600** Walla Walla 747035



**JD 9600**, 5660 hours, small grain, grass seed combine, 914W BPU platform, straw chopper.....**\$42,000** Harrisburg 0X631710



**JD 5680**, 881 hours, small grain, 35% Rahco Leveler, 635F platform and cart, A/T ready.....**\$388,700** Four Lakes 755668



**JD 690**, 619 hours, small grain, 27% Hillco leveler, duals, 635F platform and cart.....**\$409,800** Walla Walla D0765123

### COMBINES



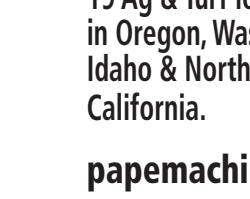
**JD 5660**, 233 hours, small grain, Vari stream rotor, Powercast tailboard, no platform.....**\$298,800** Tangent 765336



**JD 5670**, 460 hours, small grain, Vari stream rotor, Powercast tailboard, 615P BPU platform.....**\$290,400** Merrill 765545



**JD 9860**, 2472 hours, small grain, 35% Rahco leveler, no platform.....**\$159,400** Tekoa 720722



**JD 9600**, 4821 hours, small grain, grass seed combine, 914W BPU platform, straw chopper.....**\$42,500** Tangent 0X665740

### COMBINES



**JD 9760**, 2815 hours, small grain, 18% Rahco leveler, 4WD, 635F platform and cart.....**\$167,150** Tekoa 05715882



**JD 5680**, 1002 hours, small grain, 35% Rahco leveler, no platform.....**\$360,400** Colfax 755718



**Great Plains 3000TM**, V/T, 30' working width, wing fold, spike and roller crumbler.....**\$42,900** Moscow C1747H



**Landoll 7431**, V/T, 26' working width, wing fold, rear roller crumbler.....**\$39,500** Harrisburg J1203522

first place," said Tiffany Floyd, who manages DEQ's air quality division.

In response to DEQ's proposal, three members of the state's crop residue burning advisory committee that represent conservation and safe air groups resigned from the committee.

They included Austin Hopkins of the Idaho Conservation League.

"The efficacy of sitting on a board that doesn't really consider your input wasn't deemed worth the time," he told Capital Press. Hopkins said the members who resigned also didn't want their representation on the board to be misconstrued as support of DEQ's proposal.

Farm groups hailed passage of the bill that implements DEQ's proposal. "We looked at that as a huge win for our industry because we got to preserve field burning as a tool," said Roger Batt, executive director of the Idaho-Eastern Oregon Seed Association.

The change must now be approved by EPA and DEQ officials are preparing a technical modeling demonstration to prove to the agency that the change will not result in field burning in Idaho exceeding national air quality standards, Floyd said.

**BERRY BASKETS**

**NURSERY TRAYS**

15-5/16 x 10 x 2  
18-3/4 x 14-3/8 x 3

CALL FOR PRICING AND AVAILABILITY.

Delivery Available **503-588-8313**  
2561 Pringle Rd. SE  
Salem, OR

**ROSE PAPER PRODUCTS, INC.**

## LOW INTEREST LOANS FOR IDAHO SOIL & WATER CONSERVATION

- Sprinkler Irrigation
- No-Till Drills
- Fences
- Livestock Feeding Operations
- Solar Stock Water Pump Systems

**2.5%-3.25%**  
Terms 7-15 Years  
Up to \$200,000

swc.idaho.gov | 208-332-1790

## Joyce Capital, Inc.

In agriculture, nothing is certain. Your interest rate should be.

*We offer competitive interest rates for your agricultural financing needs:*

- Term agricultural loans (purchases & refinances)
- FSA Preferred Lender
- Amortizations up to 25 years

CONTACT: Kevin Arrien, or Joe Lodge at Joyce Capital, Inc. Agricultural Loan Agents  
**(208) 338-1560 • Boise, ID**  
[joe@arrien.biz](mailto:joe@arrien.biz)

**FIRST FINANCIAL BANK**

**American Farm**  
Mortgage & Financial Services<sup>SM</sup>  
a subsidiary of Legence Bank

**PAPÉ MACHINERY**

19 Ag & Turf locations in Oregon, Washington, Idaho & Northern California.

**541-681-5363** [papemachinery.com](http://papemachinery.com)

ai products  
Papé Machinery is a proud partner with A&I products and offer aftermarket parts for all makes and models of agriculture equipment.