

80 Trucks

1950 GMC Tractor: 940 Fat Cab, partly restored, 671 GMC engine, \$3500. Monroe, OR. 541-321-9088

1976 International Cab Over: tandem axle, diesel, with 13 speed, 20' rear unload silage box, \$3995 OBO. Lynden, WA. 360-815-1383

1979 International Cab Over: tandem axle, diesel, with 13 speed, 20' front and rear unload, tycrop silage box, \$7995 OBO. Lynden, WA. 360-815-1383



1987 FREIGHTLINER CATTLE TRUCK
24' Merrit box, 26' Rea trailer rebuilt BCIV, 400 Cummins 9 speed, low pro 24.5 tires, \$15,000. Broadbent, OR. 541-290-5517



(206) 571-8782



1989 FORD F800 14' FLATBED DUMP
Has a National Crane Boom and a 65" lockable tool storage. Ford diesel, 6 Spd. manual & airbrakes...\$8,950



2006 FREIGHTLINER M2 33,000 GVW airbrakes w/5 Spd. Allison AT. Nice truck..... Just reduced price to \$17,950 Will sell as Cab and Chassis if you need it that way!



JUST IN... 2008 FONTAINE 48'x102" STEPDECK
Air ride, good brakes and 255/70/22.5 rubber. Has tool box, 41" deck height and a 22" pin setting.....\$16,950



CHERRIES ARE COMING! WE HAVE (2) 51' AND 53' REFERS
This 2001 Utility only has 9000 hours on the Carrier unit..... \$7,950



1998 ALLOY 35' X 102" OS RAIL FLATBED
Good brakes, alum deck w/ nailers, spring susp, lots of winches.....\$6,950 Many other shorter Flatbeds in stock. Call for Specs!

www.pro-truck.com

Online or in print, when our customers are happy, we're happy!

"I sold the compressor 30 minutes after placing the ad on the internet with Capital Press. It was really something. I couldn't believe it! The other ads I placed had the phone ringing before I even got out the door!"
Don Wachlin
Sherwood, OR

"Your ad worked wonders! Our wagon sold yesterday to a man who read the ad in Capital Press."
Phil Hixson
Blanchard, ID

"Just a line to let you know I have enjoyed reading Capital Press for the past 50 years. I read a lot of useful information, like finding the right piece of property to move out of the city to a country home."
Emil Rexin
Willamina, OR

Capital Press
The West's Ag Weekly
Call or go online to place your line ad!
1-800-882-6789
www.capitalpress.com

80 Trucks



1988 Kenworth: Big Cam 400III, 14609B Reman transmission, spring suspension, air slide, 5" wheel, clean, good driving truck, \$9500. Grass Valley, OR. Call or text 541-980-3612

1990 INTERNATIONAL 940 EAGLE
Cummins motor. Runs good. Recent work. Ready to work. Good ranch truck, \$3,900. Prineville, OR 541-477-3101

KENWORTH T800 4-AXLE CHASSIS



10 Trucks To Choose From Your Choice \$55,000
Cummins ISX engines, 18-spd. trans. (RTLO18918B), single spd. Eaton rear-ends 4:10 or 4:11 gears w/locker, Hendrickson Haul-Max walking beam susp.

Here are a couple of the T800 trucks available:
#96 R087295 2005, D46-170hp rears, 250" WB, 475hp...\$55,000
#99 R054031 2004, DSP-463P rears, 250" WB, 475hp...\$55,000

CLEAN AND IN EXCELLENT SHAPE! MAINTENANCE RECORDS - REGULAR OIL SAMPLES

For more info: **www.irelandtrucking.com**
Thomas H. IRELAND INCORPORATED
Call Charles Ireland 541-863-1501 Myrtle Creek, OR

DORNGOODDEALS.COM



1997 UTILMASTER STEPVAN, Cargo area dimensions are: L=14' W=7'2" H=8'1" 5.9 Cummins Allison automatic recent paint and tires...\$13,995



1999 FORD F450 4X4 DUMP SNOW PLOW, 7.3 Powerstroke, 84K miles.....\$26,995



2001 FORD SUPER DUTY F-350 CREW CAB 4X4 XLT, 7.3 powerstroke, PW, PDL, P - seat AC, tilt, cruise, leather, 156k miles.....\$14,800



2002 FORD F-450 4X4, 7.3 diesel XLT auto air windows locks 129k miles.....\$19,995



2000 CHEVROLET C 3500 HD 14' FLATBED DUMP, with 42" side racks 79k miles V8 auto.....\$14,800



2011 CHEVROLET TAHOE 5.3 V8 4X4, auto air tilt cruise power windows power locks privacy glass 20" polished alloy wheels...\$13,859

DORN BROS. TRUCK SALES, Inc.
SINCE 1947
VOTED QUALITY DEALER OF THE YEAR.
3130 PORTLAND RD. • SALEM, OR (503) 585-4731
Prices good for 1 week from publication date.

CLASS 8 TRUCKS

509-534-9088 • SPOKANE, WA
Answering machine after hours



2000 FLINER CENTURY
Inexpensive four axle work truck.
2000 Freightliner Century, Cummins ISX , 10 speed.
\$16,900



2012 MAURER 42' AG HOPPER
spring susp, 24.5 steel disc, roll tarp, ladders. No Fertilizer hauled.
\$28,900



(8) 2007 IH 4300
DT466, Allison Auto, 16' insulated box, all under 200k miles, PTO can be added for additional cost.
\$19,900



2005 FREIGHTLINER COLUMBIA
Detroit 14.0 500 hp, 10 speed.
CALL FOR PRICE



2005 FREIGHTLINER CL112
450HP, 10 spd, AC, Multiple Units.
\$14,900

80 Trucks



1999 Freightliner FL70: 24 flatbed, 26,000 pound capacity, CAT 3126 diesel, 6 speed manual, 208,000 miles. Runs great! \$14,500 FOB. Portland, OR. 503-287-9000

1999 PETERBILT 378: 3406E Cat motor, 18 speed, air ride, aluminum wheels. 813,966 miles, 300,000 on reman transmission, 25,000 on Cat inframe, \$27,500. Tonasket, WA. 509-846-3225 andrewa657@gmail.com



2001 Freightliner: C12 CAT, Jake, 10 speed, 25' Schwartz winch, rolledbed, Chalmers suspension, 20,000 front dual power steering, 10 aluminum wheels, 513,000 miles. Ready to haul, \$24,000. Gaston, OR. 503-789-3726

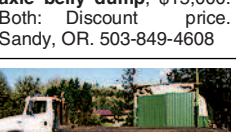


2007 Dodge 4x4: diesel, manual transmission, 145,000 miles, \$19,500 OBO. Terrebonne, OR. 541-771-8886

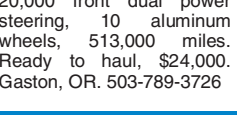
80 Trucks



2006 MACK DAY CAB: 4- axle, 427 Mack with brake, 18-speed auto shift, 46 rears, 411 ratio on air, 240" wheelbase, 11.24x5, \$24,500. 3-axle belly dump, \$15,000. Both: Discount price. Sandy, OR. 503-849-4608

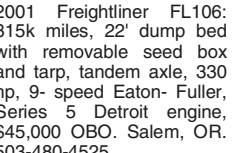


2001 Freightliner: C12 CAT, Jake, 10 speed, 25' Schwartz winch, rolledbed, Chalmers suspension, 20,000 front dual power steering, 10 aluminum wheels, 513,000 miles. Ready to haul, \$24,000. Gaston, OR. 503-789-3726



2007 Dodge 4x4: diesel, manual transmission, 145,000 miles, \$19,500 OBO. Terrebonne, OR. 541-771-8886

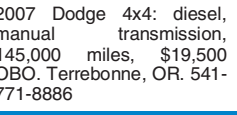
80 Trucks



2001 Freightliner FL106: 315k miles, 22' dump bed with removable seed box and tarp, tandem axle, 330 hp, 9- speed Eaton- Fuller, Series 5 Detroit engine, \$45,000 OBO. Salem, OR. 503-480-4525



2004 Freight Liner M2: single axle, cab and chassis. Very clean! \$12,500. Silverton, OR. 503-932-0766



2007 Dodge 4x4: diesel, manual transmission, 145,000 miles, \$19,500 OBO. Terrebonne, OR. 541-771-8886

80 Trucks



CUSTOM BOX TRUCK
2005 Ford F350 Super Duty Cargo Van. Purchased new and customized for farmers markets. Used only 4 months per year at local markets. Only 25,000 miles. Has roll-up doors on each side for easy loading and roll-up rear door with shelves for storage. Large fuel tank. Excellent condition, \$25,000. Pasco, WA. Call between 8-5 or text anytime 509-727-4314



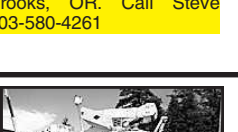
2007 Dodge 4x4: diesel, manual transmission, 145,000 miles, \$19,500 OBO. Terrebonne, OR. 541-771-8886

Used Buses
www.westernbus.com
15-1/88
503-905-0002/1-800-258-2473
WESTERN BUS SALES, INC.
30355 SE Hwy 212 • Boring, OR

80 Trucks



2014 Kenworth T800: 550 Cummins, 18 speed, 62" sleeper, newer tires and wheels, 1 owner, \$109,000. Brooks, OR. Call Steve 503-580-4261



1994 International 4700 Manlift/Utility: 42' w.h. Versalift. DT-408 & AT.....\$12,900



1995 Ford L-8000 22' Box Truck: Rail Gate. 8.3 Cummins & 9-Spd...\$8,500



1999 Ford F-350 Utility/Service with 11'Box. Lumber Rack.7.3L P.S. & AT.....\$11,900



2007 Chev 3500 Cargo Van: 9' Bed. 6.0 L Gas V-8 & AT.....\$6,900

80 Trucks

2010 International Pro Star: Cummins engine overhaul by Pape Cat, 13 speed transmission. With 2013 Trinity Belt Trailer 42". \$75,000 or best offer for both. Klamath Falls, OR 541-285-7396

Columbia 8 to 10 yard dump box, heavy duty logger with hydraulics, very nice condition, \$7500 OBO. Sandy, OR. 541-668-6808

Wanted: 2003 and up newer trucks, 4x4, with bad diesel engines and/or transmissions. Mulino, OR. 503-314-5947



1997 Chev 6500 Utility: Hydraulic Overhead Pipe Rack. 15' Walk-in Body. 7.0L Gas V-8 & 6-Spd. Under CDL.....\$6,900



1999 NPR 12' Flatbed: 5.7L V-8 & AT.....\$7,900



1995 Mack 22' Flatbed: Wooden Deck, Diesel & AT.....\$6,500



2001 Isuzu NQR 16' Box Truck: 3300 lb. Interlift. Diesel & AT. GVW 17,950...\$11,900



2006 Ford F-450 4x4 Chipper Dump: Ramsey 12,000 Winch.6.8L V-10 & AT.....\$18,500

ChambersMotorCo.com
(503) 663-7200 • Boring, OR

VALLEY EQUIPMENT & TRUCK



2001 Ford F350 Service Truck V10
Automatic, 4x4, 10' Service Box, Ex- Water District, Clean.....\$12,500



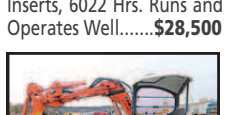
1997 International 4900 10-12 Yard Dump
DT530, 275 HP, Auto, Hend. Susp. 12,000 Front, 40,00 Rears, 154,000 Miles, New Paint, Ex-County Dump.....\$25,500



2003 Yanmar B7-5
17,000lb, Cab, Heat & AC, New Hyd Thumb, Blade, Steel Track with Rubber Inserts, 6022 Hrs. Runs and Operates Well.....\$28,500



1997 Yanmar C20R Crawler Dumper
4,000LB, 1.5 CuYd, Yanmar Diesel, Fold Down Sides.....\$7,500



2007 Hitachi ZX20UR
4378lbs, New Hyd. Thumb, Rubber Tracks, 3290 Hours, Offset Boom, Zero Tail Swing.....\$15,900



1997 Furukawa (Hitachi) F1 302 Mini Wheel Loader
5775 Lbs. 4WD, 4 Wheel Star, Articulated, Isuzu Diesel, 29 HP. These are an excellent alternative to a skid Steer Loader...\$15,500

(253) 333-0313 / AFTER HOURS
535 W. Valley Hwy S. / Pacific, WA 98047 / Lonny (206) 793-1190 John (206) 793-8085
www.valleyequipmentandtruck.com

100 Truck & Pickup Parts 100 Truck & Pickup Parts

Agri-Cover® ROLL TARP SYSTEM



APPLICATIONS:
• Fertilizer Spreaders
• Farm Trucks
• Grain Carts / Wagons
• Belly Dump Trailers

SALES & INSTALLATION
Also Available: Pickup & Truck Accessories RV Accessories

PUMMEL TRUCK SUPPLY CO.
2310 Hoyt St. SE
P.O. Box 12066
Salem, OR 97309
(503) 581-2437
1-800-695-6996
www.pummeltrucksupply.com

POWER
YOUR REGIONAL COMMERCIAL DEALER FOR NEW AND USED

We have New and Pre-Owned Commercial Vehicles
Contact us today to see what we have waiting for you!

CALL JIM OR PHIL 1-844-421-5667

POWER FLEET - COMMERCIAL
Email: fleet@powerautogroup.com • www.powerautogroup.com

OTC Oregon Truck Center
6505 NE Columbia Blvd
Portland, Oregon
(503) 288-1118
www.oregontruckcenterinc.com

2007 Freightliner Columbia Single Axle Tractor, Detroit 12.7L425hp, 10 spd, 3.73 ratio, 176" WB, 290,679 miles. Stk#5756. Call For Price

2008 26'x102" Kidron insulated heater box, 8' inside height, 90" door opening, plywood lined, self-contained Thermoking heater unit, Rail-gate, unit will run and operate as its. Stk# 5664.....\$6,000

(2) (1) 2006 International 4400 single axle, DT466, Allison automatic, 10k FA, 22k RA, 5:29, 151" WB, 190k miles, dual 70 gal tanks. Stk#5693 & Stk#5694.....\$22,500 \$19,950

2007 Sterling Acterra Cab & Chassis, MBE 900, 10 spd, 40K RA, 13,220 #FA, 272" WB, 274,984 miles. Stk#5673...\$23,950

(2) (2) 2007 Freightliner M2-106 Single Axle Tractor, Cat C-7, (2) w/Allison automatic, miles from 195k-236k. Stk#s 5761, 5762 & 5763.

2007 Isuzu NPR, 12x90" reefer truck, Carrier engine driven reefer unit, 14,500 #GVW, 4 cylinder, turbo diesel, 190hp, automatic w/O, 206,258 miles. Stk# 5750.....\$22,500

WW TRAILERS INC.
5000 NE Columbia Blvd., Portland, OR 97218
(503) 821-6000
www.wwtrailers.us

(4) 2001 Lufkin 48' x 102" steel and wood spread axle air ride flatbeds \$9,250 each

(2) 2006 Ottawa YT 50 Commando Yard Goats..... Please Call

1994 Comet 48' 3-axle flatbed, steel and wood, F-4001.....Please Call

1995 Caterpillar 300L bucket w/thumb, awesome shape, runs great.....Please Call

LOVELL Truck Sales 50th ANNIVERSARY

2010 Freightliner Cascadia 3-Axle day cab.
18 spd auto shift, diff lock + full lockers, DD 15 500hp, PS, AC, CC, power windows, air ride cab, engine brake, aluminum wheels, dump valve, 196" wheelbase, good Dyno.....\$24,500

2012 KW T660 70" Mid Roof 280" wheelbase, PAC CAR MX-455, auto shift, super singles, 500k miles, good dyno.....\$29,500

1991 Freightliner Tandem Axle FLD-120, Cummins, Big Cam 4, 13 spd., PS, engine brake...\$6,500

2006 Peterbilt 378 3-Axle Day Cab
CAT C-15, 470hp, 10 spd., engine brake, PS, AC, CC.....\$27,500

2004 48' Curtain Van Transcraft
Sliding tandems, very clean.....\$18,500

2002 Ford F650, CAT 3126, auto transmission, PS, AC, cruise control.....\$8,500

2011 Cascadia Freightliner Mid-Roof Sleeper
DD-15, Jake brake.....\$29,500

2005 Peterbilt 385 3-Axle Day Cab
CAT C-13, 430 hp, 10 spd., 4.11 gears, PS, AC, CC, Jake, 184" WB, good Dyno.....\$24,500

2007 International 4400 Reefer
DT-466, 6 speed transmission...\$18,500

2005 Petebilt 330 Tandem Axle Cab & Chassis, Cummins ISC 315, 10 speed, Hendrickson Walking Beam, 274" WB.....\$24,500

2006 Freightliner Tandem Axle
Flat Bed, 8LL Trans., Tuff Track Suspension, 14,700 Front Axle, 256" WB.....\$24,500

2006 GMC C-7500
Diesel, Automatic, 24" box lift gate. PS, AC, cruise control.....\$9,500

1-800-451-0012
(503) 266-5886
FAX (503) 266-6903
LOVELLTRUCKSALES.COM
680 SW 1st (Hwy 99 East) Canby, OR

15-7/16

15-7/16