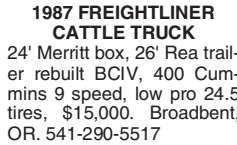


80 Trucks



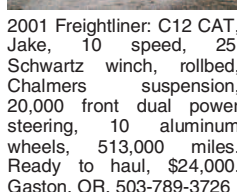
80 Trucks

1994 Kenworth: W900L, 3406 E CAT, 450HP, 10 speed transmission, lift axle, day time cab, new drive tires, \$27,000 OBO. Tangent, OR. 541-953-5961



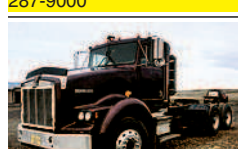
1987 FREIGHTLINER CATTLE TRUCK 24' Merritt box, 26' Rea trailer rebuilt BCIV, 400 Cummins 9 speed, low pro 24.5 tires, \$15,000. Broadbent, OR. 541-290-5517

1990 Kenworth T-600, 315 HP Cummins: 9 speed transmission, 1485 miles on engine in-frame, trailer air brakes, hydraulic dump bed, 95% rubber on drivers, asking \$18,000. Olympia, WA. 360-791-1792.



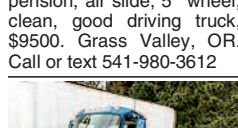
2001 Freightliner: C12 CAT, Jake, 10 speed, 25' Schwartz winch, rolledbed, Chalmers suspension, 20,000 front dual power steering, 10 aluminum wheels, 513,000 miles. Ready to haul, \$24,000. Gaston, OR. 503-789-3726

1999 Freightliner FL70: 24' flatbed, 26,000 pound capacity, CAT 3126 diesel, 6 speed manual, 208,000 miles. Runs great! \$14,500 FOB. Portland, OR. 503-287-9000



2004 Freight Liner M2: single axle, cab and chassis. Very clean! \$12,500. Silverton, OR. 503-932-0766

1988 Kenworth: Big Cam 400III, 14609B Reman transmission, spring suspension, air slide, 5" wheel, clean, good driving truck, \$9500. Grass Valley, OR. Call or text 541-980-3612



Does your business need calls, customers and sales? Advertise in Capital Press Line Ad Classifieds. Call 1-800-882-6789

2006 MACK DAY CAB: 4- axle, 427 Mack with brake, 18-speed auto shift, 46 rears, 411 ratio on air, 240" wheelbase, 11.24x5, \$24,500. 3- axle belly dump, \$15,000. Both: Discount price. Sandy, OR. 503-849-4608

40'x24' Set Needs Some TLC '84 Comet 40' outside rail needs paint and deck work has hitch. 24' outside rail trail with dolly..... \$8,000 For Set! www.pro-truck.com 14-4/#8



1999 Skytrak # 8042, 8,000 lb. Cap., 42' Height. Cummins Power.....\$29,000

2008 GMC Savana 16' Cube Van. 4.8L V-8 & A/T. Dually & 3 Pax.....\$8,900



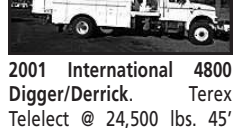
1997 Kawasaki 852-IV Wheel Loader. Nissan Turbo-Diesel. 4-3/4 C.Y..... \$39,500

2002 Chev Venture Wheel Chair Van. Wheel Chair + 3 Pax. 3.4L V-6 & A/T. Mechanical Drop-Down Ramp.....\$3,500



2001 Freightliner Century. 430 h.p. C-12 Cat & 10-Spd. Adjustable 5th wheel, Cruise & Jake.....\$13,900

1980 International 5070 Digger. 4x4 with 54" Auger Capacity. 290 Cummins & 8-Spd.....\$15,900



1998 Jeep Cherokee. 4X4. All-Power. Low Miles..... \$5,995

2001 International 4800 Digger/Derrick. Terex Telelect @ 24,500 lbs. 45' Sheave Hgt. DT 530 & 9 Spd.\$24,500



2002 Ford F-750. 60' w.h. 2-man Bucket. 210 h.p. 3126 Cat & 7-Spd. Terex Hi-Ranger 5TC 55.....\$25,000

ChambersMotorCo.com (503) 663-7200 • Boring, OR 14-2/#8



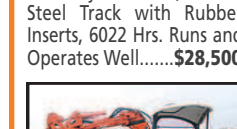
2001 Ford F350 Service Truck V10 Automatic, 4x4, 10' Service Box, Ex- Water District, Clean.....\$12,500

1997 International 4900 10-12 Yard Dump DT530, 275 HP, Auto, Hend. Susp. 12,000 Front, 40,000 Rears, 154,000 Miles, New Paint, Ex-County Dump.....\$25,500



2003 Yanmar B7-5 17,000lb, Cab, Heat & AC, New Hyd Thumb, Blade, Steel Track with Rubber Inserts, 6022 Hrs. Runs and Operates Well.....\$28,500

1997 Yanmar C20R Crawler Dumper 4,000LB, 1.5 CuYd, Yanmar Diesel, Fold Down Sides.....\$7,500



2007 Hitachi ZX20UR 4378lbs, New Hyd. Thumb, Rubber Tracks, 3290 Hours, Offset Boom, Zero Tail Swing.....\$15,900

1997 Furukawa (Hitachi) F1 302 Mini Wheel Loader 5775 Lbs. 4WD, 4 Wheel Star, Articulated, Isuzu Diesel, 29 HP. These are an excellent alternative to a skid Steer Loader...\$15,500

(253) 333-3013 / AFTER HOURS 535 W. Valley Hwy S. Pacific, WA 98047 / Lonny (206) 793-1190 John (206) 793-8085 www.valleyequipmentandtruck.com 14-1/#8

80 Trucks

1999 PETERBILT 378: 3406E Cat motor, 18 speed, air ride, aluminum wheels. 813,966 miles, 300,000 on reman transmission, 25,000 on Cat inframe, \$27,500. Tonasket, WA. 509-846-3225 andrewa657@gmail.com

80 Trucks



2012 International ProStar Plus 485HP with Jake, 13 speed transmission 3:36 ratio, 48" flat top sleeper, aluminum wheels, lift axle, wet kit, 252" wheelbase, 8 new drive tires 100%, steers 40%, lift tires 35%, 349,000 miles \$47,000. Ontario, OR. 208-318-8819

80 Trucks

2001 Freightliner FL106: 315k miles, 22' dump bed with removable seed box and tarp, tandem axle, 330 hp, 9- speed Eaton- Fuller, Series 5 Detroit engine, \$45,000 OBO. Salem, OR. 503-480-4525

1976 International Cab Over: tandem axle, diesel, with 13 speed, 20' rear un-load silage box, \$3995 OBO. Lynden, WA. 360-815-1383

BEST SELLERS... "The phone rang off the hook." VanVeldehuizen Dairy • Turner, OR Call and list your BEST SELLER! 1-800-882-6789

USED BUSES FOR SALE

WESTERN BUS SALES, INC. www.westernbus.com • (800) 258-2473 30355 S.E. Hwy 212, Boring, OR 97009 Expansive Inventory • Low Prices • Service • Parts 14-4/#8

POWER YOUR REGIONAL COMMERCIAL DEALER FOR NEW AND USED We have New and Pre-Owned Commercial Vehicles Contact us today to see what we have waiting for you! CALL JIM OR PHIL 1-844-421-5667 POWER FLEET - COMMERCIAL Email: fleet@powerautogroup.com • www.powerautogroup.com 80-14-4/#7

OTC Oregon Truck Center 6505 NE Columbia Blvd Portland, Oregon (503) 288-1118 www.oregontruckcenterinc.com



(2) 2007 Freightliner M2-106 Single Axle Tractor, Cat C-7, (2) w/Allison automatic, miles from 195k-236k. Stk#s 5761, 5762 & 5763.....\$23,950

2007 Sterling Acterra Cab & Chassis, MBE 900, 10 spd, 40K RA, 13,220 #FA, 272" WB, 274,984 miles. Stk#5673.....\$23,950

2007 Isuzu NPR, 12x90" reefer truck, Carrier engine driven reefer unit. 14,500 #GVW, 4 cylinder, turbo diesel, 190hp, automatic w/OD, 206,258 miles. Stk# 5750.....\$22,500



2008 26'x102" Kidron insulated heater box, 8' inside height, 90" door opening, plywood lined, self-contained ThermoKing heater unit, Rail-gate, unit will run and operate as it sits. Stk# 5664.....\$6,000

(2) (1) 2006 International 4400 single axle, DT466, Allison automatic, 10k FA, 22k RA, 5:29, 151" WB, 190k miles, dual 70 gal tanks. Stk#5693 & Stk#5694.....\$22,500 \$19,950

2007 Freightliner Columbia Single Axle Tractor, Detroit 12.7L/425hp, 10 spd, 3.73 ratio, 176" WB, 290,679 miles. Stk#5756. Call For Price

WW TRAILERS INC. 5000 NE Columbia Blvd., Portland, OR 97218 (503) 821-6000 www.wwtrailers.us



1995 Caterpillar 300L bucket w/thumb, awesome shape, runs great.....Please Call

(4) 2001 Lufkin 48' x 102" steel and wood spread axle air ride flatbeds. \$9,250 each.....Please Call

(2) 2006 Ottawa YT 50 Commando Yard Goats..... Please Call



1994 Comet 48' 3-axle flatbed, steel and wood, F-4001.....Please Call

1994 Comet 48' 3-axle flatbed, steel and wood, F-4001.....Please Call

1994 Comet 48' 3-axle flatbed, steel and wood, F-4001.....Please Call

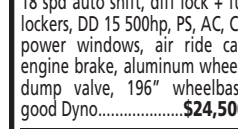
LOVELL Truck Sales 50th ANNIVERSARY



2010 Freightliner Cascadia 3-Axle day cab. 18 spd auto shift, diff lock + full lockers, DD 15 500hp, PS, AC, CC, power windows, air ride cab, engine brake, aluminum wheels, dump valve, 196" wheelbase, good Dyno.....\$24,500

2012 KW T660 70" Mid Roof 280" wheelbase, PAC CAR MX-455, auto shift, super singles, 500k miles, good dyno.....\$29,500

1991 Freightliner Tandem Axle FLD-120, Cummins, Big Cam 4, 13 spd., PS, engine brake.....\$6,500



2006 Peterbilt 378 3-Axle Day Cab CAT C-15, 470hp, 10 spd., engine brake, PS, AC, CC.....\$27,500

2004 Van 48' Curtain Van Tractor Sliding tandems, very clean.....\$18,500

2006 Peterbilt 330 Tandem Axle Cab & Chassis, Cummins ISC 315, 10 speed, Hendrickson Walking Beam, 274" WB.....\$24,500



1998 Utility Reefer 48x102 trailer, newer carrier unit with low hrs.....\$8,500

2002 Ford F650, CAT 3126, auto transmission, PS, AC, cruise control.....\$8,500

2005 Peterbilt 385 3-Axle Day Cab CAT C-13, 430 hp, 10 spd., 4.11 gears, PS, AC, CC, Jake, 184" WB, good Dyno.....\$24,500

COMING IN THIS WEEK 2007 International 4400 Reefer, DT-466, 6 speed transmission.....Call on Price (2) 2011 Cascadia Freightliner Mid-Roof Sleeper, PP15, Jake brake.....\$29,500 2006 Freightliner Tandem Axle Flat Bed Truck, 187 Track Suspension.....Call on Price

1-800-451-0012 LOVELLTRUCKSALES.COM (503) 266-5886 • FAX (503) 266-6903 680 SW 1st (Hwy 99 East) • Canby, OR 14-2/#7

Jump Start Your Ads by Placing Online! "I had calls from New York, Minnesota, Idaho & Texas before the paper came out Friday! People are obviously using your website!" Mickelsen Dairy, Inc. Winlock, WA Classified ads placed online go straight to the website! (on approval) Don't wait! Place your ad right now!

Capital Press The West's Ag Weekly 800-882-6789 www.capitalpress.com

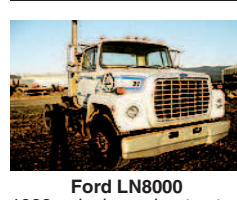
100 Truck & Pickup Parts

100 Truck & Pickup Parts

100 Truck & Pickup Parts

100 Truck & Pickup Parts

80 Trucks



80 Trucks

Columbia 8 to 10 yard dump box, heavy duty logger with hydraulics, very nice condition. \$7500 OBO. Sandy, OR. 503-668-6808

Ford LN8000 1988 single axle tractor, 175HP, Ford engine, 10 speed, good rubber, 440,770 miles, \$4350, Harrisburg, OR. 541-905-3137

Wanted Used 1 Ton Dually: 4x4 70s, 80s, 90s, or 2000s. Auburn, WA 253-217-2956 Joey.

Wanted: 2003 and up newer trucks, 4x4, with bad diesel engines and/or transmissions. Mulino, OR. 503-314-5947

TRUCKS CUSTOM BEDS & TRAILERS

2005 STERLING WITH A CAT C13 ENGINE at 380 HP, 10 speed transmission, air ride, air ride cab and air ride seats. Right length for 20' bed. Ready to install bed. \$20,000 or \$35,000 with bed, hoist, & slip tank.



www.EconomyTruckSales.com economytrucksales@charter.net Ph 509-525-3322 Walla Walla, WA Cell 509-200-1020 14-4/#6

WANTED "Fairly Honest Neil" I BUY TRUCKS Specializing in Running or NOT! in The Pacific Northwest 503-521-6935 HAGERMAN INC 7100 N.E. Columbia Blvd Portland, OR 97218 neil@hagermanparts.com 14-2/#8

CLASS 8 TRUCKS 509-534-9088 • SPOKANE, WA Answering machine after hours

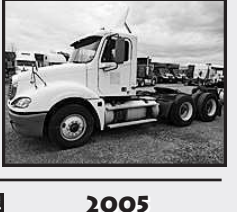


2000 FLINER CENTURY Inexpensive four axle work truck 2000 freightliner Century Cummins ISX, 10 speed \$14,000



2012 MAURER 42' AG HOPPER spring susp, 24.5 steel disc, roll tarp, ladders. No Fertilizer hauled. \$28,900

(8) 2007 IH 4300 DT466, Allison Auto, 16' insulated box, all under 200k miles, PTO can be added for additional cost \$19,900



2005 FREIGHTLINER COLUMBIA Detroit 14.0 500 hp, 10 speed. Save money before we detail it.

2005 FREIGHTLINER CL112 450HP, 10 spd, AC, Multiple Units. \$14,900

Tim's DIESEL TRUCK REPAIR & FARM MACHINERY • TRANSMISSION • REAR ENDS • ENGINE OVERHAUL • BRAKE JOBS New & Used Parts In Stock! Quality Workmanship at Low Shop Prices Hubbard, OR 503-981-9151 • Portland 503-224-3466 14-2/#7

ARMY TRUCKS 4x4 & 6x6 COMPLETE PARTS INVENTORY MEMPHIS EQUIPMENT 901-774-0600 (TN) www.memphisequipment.com THE NATION'S LARGEST ARMY TRUCK DEALER 14-1/#4x

FLATBEDS Pro-Line all steel flatbeds are complete, installed, wired and ready to work! Powder coated • Colors available • Mud flaps • Treated T&G wood deck • Backup, clearance & work lights • Trailer plug • Gooseneck access with cover • Stop & turn lights on cab guard Also check out our Stockmans Flatbed! All steel, wired, ready to work. You install. Call Today Dean 541-419-4170 Shop 541-447-4555 www.prolinefab.com 1440 SW Tom McCall Road • Prineville, OR Pro-Line can meet your custom fabrication needs! 14-7/#5