

1560 Tractors

8320 John Deere: duals, deluxe cab, \$82,500. Silverton, OR. 503-932-0766

John Deere 8870: 350 hp, articulated tractor with PTO \$39,500. John Deere 8560, 235 hp, articulated tractor with PTO, \$32,500. Rigby, ID. 503-939-9241

Looking for 60-70 hp Diesel with Loader: good to excellent condition. Boardman, OR. 541-571-2387

Massey Ferguson 135: Gas, 2600 hours, excellent condition, \$4000. Gaston, OR. 503-662-5401

Massey Ferguson 165 with Loader: 1976, 54 HP, hi-low, rebuilt engine, clutch, and hydraulics, 16.5/38 rear tires, \$9500. Corvallis, OR. 541-740-1718



Steiger ST310: very strong engine, needs clutch, \$11,500 OBO. McArthur, CA. 530-249-3283

1600 Farm Equipment

(2) 2013 8650 Massey Ferguson Tractors: 240 hp, Xenon lighting package, CVT transmission, MFWD, speed steer, front suspension, cab suspension, 5 SCVs rear duals, front and rear weights tires at 85%, front tires 420/85R/34, rear tires 480/80R/50, dual bearings, telescope power mirrors, quick hitch, tractors are one serial number apart, like new condition. One tractor has 870 hours other has 984 hours, \$139,000 each OBO. Bend, OR. 541-420-7124

(400) Gallon Blue Line Air Blast: turning hitch, \$12,000. Silverton, OR. 503-932-0766

14.5' 3 Section Roller: 18" rings, \$1,000. Tahuya/Western, WA. 360-731-3285

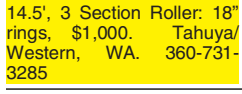
1990 Case IH 1660 Rotary Axial Flow Combine 8.3L Cummins engine, 3920 engine hours. Comes with a 20' auger platform header and a belt pickup header. It has been well maintained, stored inside, and is harvest ready, \$16,500 OBO. Bonners Ferry, ID. 208-610-1910

2 Available BRAND NEW MASSEY 9145 Dbl. Cond. Heads Was \$25,000 NOW \$19,500 541-372-4020

1600 Farm Equipment



14' SCHMEISER ROLLER 14' Schmeiser roller with transport 22" rings, \$5600. Boring, OR. Jeff 503-720-8434.

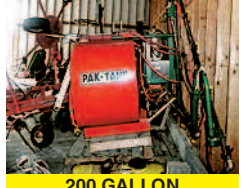


1990 Case IH 1660 Rotary Axial Flow Combine 8.3L Cummins engine, 3920 engine hours. Comes with a 20' auger platform header and a belt pickup header. It has been well maintained, stored inside, and is harvest ready, \$16,500 OBO. Bonners Ferry, ID. 208-610-1910

1600 Farm Equipment

13 Foot Tye: pull type, no till drill, \$6500. Silverton, OR. 503-949-7644

1987 Littau Berry Picker: newer Cummins diesel engine, rotary head, side row, \$37,500 OBO. Silverton, OR. 503-999-7493



200 GALLON REARS SPRAYER: 30' boom and foam marker, excellent condition \$4,950. Rochester, WA. 360-239-4276



2005 John Deere 9760 STS Combine: Contour Master, duals, chopper, \$69,500. Hillsboro, OR. 503-939-9241

2009 Summers Ultra Ultimate Sprayer: 133' booms, 1500 gallon poly tank, No-rac auto boom height control, John Deere rate controller, 5 section boom control, poly mix tank, 24.5 diamond tread tires, \$24,500 OBO. Heppner, OR. 208-610-1910

1600 Farm Equipment

2005 UNVERFERTH 220 ROLLING HARROW: 33' working width, good condition, \$8,500. Elma, WA. 360-470-0669



2010 Gleaner R76: 1488 engine hours, 1185 rotor hours, with 2008 MacDon D50 30' draper header and cart, well maintained, harvest ready. Full inspection and overhaul by dealer last winter. Parked inside, \$155,000 OBO. Will entertain partial trades for farm equipment. Heppner, OR. 208-610-1910



30' Heavy Harrow: hydraulic hitch and locking wings, dual wheels and no teeth, asking \$21,000. Brooks, OR. Call Steve 503-580-4261

1600 Farm Equipment



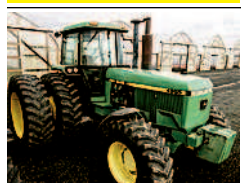
30' Brillion X Field Sprocket Roller: asking \$18,000. Brooks, OR. Call Steve 503-580-4261



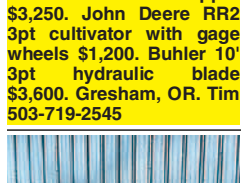
700 INTERNATIONAL 13' DISC: Field ready disc, new wheel bearings, \$5,000. Rochester, WA. 360-239-4276



8' Box Scraper: asking \$1500. Brooks, OR. Call Steve 503-580-4261



89 John Deere 4955: 8654 hours, great shape \$37,500. Krause 5815W offset disk, 28" blades, 15' wide, \$10,500. Blue Jet 5 shank in line ripper \$3,250. John Deere RR2 3pt cultivator with gage wheels \$1,200. Buhler 10' 3pt hydraulic blade \$3,600. Gresham, OR. Tim 503-719-2545



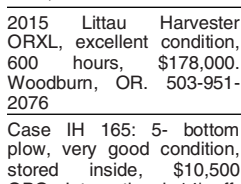
Agri-Fab Weed Wiper: with a 14' power roller and Honda motor, \$3500. Brooks, OR. Call Steve 503-580-4261



Boom Mower 3 point, self contained, hydraulic, 60" deck, 20' reach, rear fold to 8' transport. Over 50 other mowers from 42", 3 point, to 15' wing fold pull in stock. American Made Since 1958. Hardee by evh mfg. co. www.pacific-statesequipment.com 208-543-6319



Case 8585 3x4 Baler (same as Hesston 4790): 52,980 Bales. Serviced this spring, owned 6 years, approximately 1200 bales per year, new teeth, \$20,000. Moses Lake, WA. 509-750-6337



2015 Littau Harvester ORXL, excellent condition, 600 hours, \$178,000. Woodburn, OR. 503-951-2076

Case IH 165: 5- bottom plow, very good condition, stored inside, \$10,500 OBO. International 14' offset disc, \$4500 OBO. Silverton, OR. 503-999-7493

Case IH 3900 Disk: 32' with attached harrow, good condition, \$12,000. Forest Grove, OR. 503-310-2524

Case: 13' 3-point chisel plow, \$2750. Silverton, OR. 503-586-6641

Chipper: Valby 160T with Hydraulic Feed, 3 Point, 540 PTO, 6.5" logs, new, never used, shedded, \$5,100. Kettle Falls, WA. 509-684-8262

CLIPPER SUPER 29D Clipper Super 29D seed cleaner. Everything works, 30+ screens in various sizes. Gustafson treater and indent. Pullman, WA. 509-330-0325

DUK Rears, DUK 351 engine, 525 gallon tank, 60' boom, tundra tires, \$39,500. Hubbard OR. 503-710-0105

Farm Equipment Retirement Sale: Prices Reduced! 2008 John Deere 9630 tractor, 2400 hours with Green Star 3000, full weights, Firestone tires. 1998 John Deere 8300 tractor, 4554 hours, 2007 Sterling truck. 2010 Rears shredder, 48". All kept in shop and in excellent condition. Jerome, ID. 208-280-8201



Great Plains 3 Point Sprayer: with 300 gallon capacity, 60' cross fold hydraulic booms, wet boom plumbing and foam marker, asking \$9,500. Brooks, OR. Call Steve 503-580-4261

HARRISTON PLANTERS 2000 and 2003 six row potato planters. Semi mount, set up for fertilizer and chemical, chrome shoes, many extra parts. \$16,000 each OBO. Pasco, WA. 509-531-5707

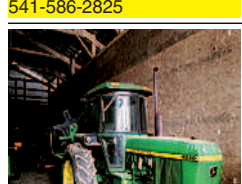
Horse Brush Hog Mower: 42" cut, like new with manual, \$700 OBO. Kubota U-15 Excavator: excellent condition, with manual, \$14,900 OBO. Sweet Home, OR. 541-405-2227

I Am Looking For Land To Lease: for hunting deer, elk, and/or upland game birds. Please call Sam at 229-378-4630

1600 Farm Equipment

International 400 Air Planter: with spray equipment, \$3200. Massey Ferguson manure spreader, \$2500. John Deere 900, 5 shank ripper, \$2500. John Deere 950 switch plow 3-18, \$6000. John Deere 4400 diesel combine, 14' grain head with transport trailer, 343 corn head, \$10,000. Pair of tractor duals 18.4x34, 80% rubber, \$1800. Woodburn, OR. 503-989-0512

John Deere 1590: no-till drill, like new, \$48,200. Arook, OR. Call after 6pm. 541-586-2825



John Deere 4030: cab, new tires, 7,000 hours, quad range, \$16,000. Amity, OR. 503-435-7504

John Deere 4100 Narrow: 20HP, 1200 hours, \$5200. Rears 50 gallon Pak Blast sprayer, \$1800. Agric 30' tiller, \$750. King 2-row fertilizer drop spreader, \$2500. Rears Nifty Fifty sprayer, \$1000. King 30' disc with seeder, \$1800. John Deere 12' drop spreader, \$750. Boring, OR. 503-380-1531

John Deere 7700 Combine Parts: many to pick from. Make offer. Halsey, OR. 541-974-9701



JOHN DEERE 995 SWITCH PLOW: John Deere 995, 5 bottom on-land switch plow. All wear parts in excellent condition, \$9400. Boring, OR. Jeff 503-720-8434

John Deere Hoe Openers: fits grain drill, \$2,400 for set 24". 16.9-30 Duals, tires 85%, wheels and hardware, new powder coating, \$1,350. Albany, OR. 541-990-2018

Kenoco Bed Shaper: plastic mulch layer, water wheel transplanter. Many attachments, lightly used, \$11,000. Silverton, OR. 503-586-6641

Krause: 42' cultivator, K-line twisted shanks, 5 sections, Morris harrows, Bourgault points and sweeps, \$7,500. 4 IH 150, 18" split packer drills, no hydraulics, new Stoess hitch, \$9,000. EZ-ON, 28" disc with Calkins harrows, \$4,500. Ritzville, WA. 509-660-0552

Kuhn MD585D Fertilizer Spreader: for band or broadcast. Like new, \$4450. Woodburn, OR. 503-951-2076



Landoll 6230 Disk: 26", 3-tine bar harrows, field ready, \$31,500. Fairfield, ID. 208-539-0087

Largest Amount of Used Farm Equipment: in the valley. If you didn't shop here you have paid too much. Independence, OR. 503-838-3740, 503-383-6722

Littau Berry Machine: beater style, picks great, \$6,500. RES custom made berry pruner, like new, \$6,000. Beaver Creek, OR. 503-632-4409

MacDon 9352C Swather: 850 hours, 972 draper head, many extras, excellent condition, stored inside, completely rebuilt and field ready, \$65,000. Silverton, OR. 503-999-7493



NORTHWEST FILTER CLEANING Save your green and have your filters cleaned!! Cleaning Agriculture, Construction, and Industrial filters since 1985. Call today for your free quote and ask about our multiple filter discounts. dan@pfpokane.com shawn@nwfor.com 4008 E. Broadway, Spokane, WA. 99202 1-877-891-0290

Melroe 7 bottom plow: \$6500. Located in Jefferson, OR. 541-327-1645

MINT DISTILLERY EQUIPMENT 12 bay mint still. Boilers, condensers, separating cans, re-distills. Lots of new piping, valves, pumps, tanks, electrical panels and other parts. 18' Newhouse tubs. New Holland 240 pull chopper with dolly. Junction City, OR. Call for pictures, information. 541-554-4891



Model 125 Hesston Manure Spreader: in excellent shape, \$6,700. Silverton, OR. 503-932-2037

New Holland 505, lots of updates. Hesston 4690S, 1580 hours. Ford 7740, runs great. New Holland 1095 baler, new tires, 1 owner. All field ready. Turlock, CA. 209-595-4675

NEW HOLLAND 900 Forage Harvester: w/ grasshead. Comes w/ extra parts \$3950. Elma, WA. 360-470-0669

1600 Farm Equipment

NEW DUCK TUBES: Rub Duk Enterprises, LLC. Albany, OR. 541-619-4720, 541-401-7725

Offers Considered On All: Eversman 12' disc, adjustable hydraulic, \$1125. International 640, 4-bottom plow, 18", \$950. John Deere 10' tandem 20" disc, \$750. 1950's John Deere 12' harrow, adjustable angle, \$175. Spring Harrow, 3-point hitch, 3-row, \$150. Diesel tanks, 500 gallon \$450, 250 gallon \$200. Othello, WA. 509-750-4896 farwellcustom@gmail.com

Schmeiser Seed Bedder with Rear Hitch: 14', good condition, updated axle, new tires, \$14,000. 14' Case IH 6200 drill, 7" spacing. Good Condition, \$4,000. Eltopia WA. 509-727-5073 or nathan@victoryagllc.com

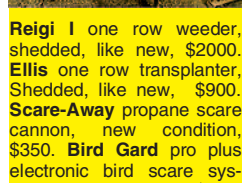


Planter and Planter Carrier: Three 88" intense bed Beck Planter units, built in 2011, less than 1,000 acres total use. Nyssa Machine planter carrier/roller, built in 2016, used for one season. \$35,000. Tractor Not For Sale. Ontario, OR. 208-707-1538

Flory Sweepers: Cab and open station, starting at \$21,000. Silverton, OR. 503-932-0766



HEAVY HARROWS Custom built Heavy Harrows starting at \$850/foot. Independence, OR. Call Shane 503-586-4564



Reigi I one row weeder, shedded, like new, \$2000. Ellis one row transplanter, shedded, like new, \$900. Scare-Away propane scare cannon, new condition, \$350. Bird Gard pro plus electronic bird scare system, new condition, \$350. Large propane chili pepper roaster with motor on wheels, new condition, \$895. Billings, MT. 406-698-3806

Reverse Osmosis Water Treatment Plant/ Leachate: Pumps, electrical, filters, tanks. Used very little, \$75,000 or trade (original cost \$3,000,000). Creswell, OR. 541-912-7807

WANTED USED MINT TUB 16' NEWHOUSE 208-830-5508 1600-10-2-21/17



4x4 Mini Trucks Made For Work www.cape-ape.com 503-842-4145 1600-9-5-4/18

Riverside Containers.com Containers for sale or rent (503) 780-3236 rich.riverside@frontier.com 10-1/18

McCORMICK NEW Kubota 126 (108 PTO hp) & 135 (118 PTO hp), cab, 4WD, rental returns. NEW Kubota 4052 Horizontal Mixer, 520 cu. ft., high roughage option, \$1124 slinger. NEW Kuhn GMD 600 Mower.....\$9,000 NEW Land Price 42" to 12' Pasture Mowers..... NEW Kubota RA 2584 Rake, 24'11"-27'..... NEW Kubota BH75 & 90 Backhoe units, fit 20-50hp..... Special Prices Kubota B1550HST, 15 hp, 4WD, 1800 hrs, loader, \$5,000. Cat 910 Articulating Loader, tight unit, \$N6857.....\$16,500 Gehl 5240 Skid Steer.....\$12,500 New Holland L35 Skid Steer.....Coming In Komatsu SK1020 Skid Steer.....\$9,500 Ford 530 Baler.....\$1,000 Schulte F10 10' Rotary Cutter.....\$7,500 Kuhn FC4000G Mower Conditioner.....\$15,000 New Holland 3118 Slinger, 16 yd, flotation.....\$7,500 Skid Steer Manure Agitator, 8'.....\$2,000 Demco 50 gal. sprayer, Honda, trailer.....\$1,000 Howard 54" Tiller.....\$1,000 Kidd 610 straw chopper.....\$1,500 as-is Kidd 804 straw chopper.....\$2,000 as-is Braber BE post hole digger.....\$500

BOYD'S IMPLEMENT SINCE 1979 www.boyds-implment.com 1-877-842-9408 Tillamook, OR Kubota Kuhn-Knight NUHN GEHL BALZER

Melroe 7 bottom plow: \$6500. Located in Jefferson, OR. 541-327-1645

MINT DISTILLERY EQUIPMENT 12 bay mint still. Boilers, condensers, separating cans, re-distills. Lots of new piping, valves, pumps, tanks, electrical panels and other parts. 18' Newhouse tubs. New Holland 240 pull chopper with dolly. Junction City, OR. Call for pictures, information. 541-554-4891

Model 125 Hesston Manure Spreader: in excellent shape, \$6,700. Silverton, OR. 503-932-2037

New Holland 505, lots of updates. Hesston 4690S, 1580 hours. Ford 7740, runs great. New Holland 1095 baler, new tires, 1 owner. All field ready. Turlock, CA. 209-595-4675

NEW HOLLAND 900 Forage Harvester: w/ grasshead. Comes w/ extra parts \$3950. Elma, WA. 360-470-0669

NEW DUCK TUBES: Rub Duk Enterprises, LLC. Albany, OR. 541-619-4720, 541-401-7725

Offers Considered On All: Eversman 12' disc, adjustable hydraulic, \$1125. International 640, 4-bottom plow, 18", \$950. John Deere 10' tandem 20" disc, \$750. 1950's John Deere 12' harrow, adjustable angle, \$175. Spring Harrow, 3-point hitch, 3-row, \$150. Diesel tanks, 500 gallon \$450, 250 gallon \$200. Othello, WA. 509-750-4896 farwellcustom@gmail.com

Don't See It? Give Us a Call! 10-1/18

SHIPPING CONTAINERS FOR SALE



PROUDLY DELIVERING NEW, USED & MODIFIED CONTAINERS TO: WASHINGTON, OREGON & IDAHO

DRY BOX 503-241-4000 www.DryBoxUsa.com 1600-9-5-1/18

TJEQUIPMENT LLC



(3) JD 7700 MFWD, 140 hp, Power Quad, front 3 point & hydraulics..... CALL FOR PRICING



1990 Peterbilt 377 with 22' live floor box, hydraulic endgate, rollover tarp, 13 speed, 425 hp CAT 3406B...\$34,000



2004 Claas Jaguar 8700 w/27' Claas Disco 3100 FC cutter head, 4WD, 2468 engine hours, 1763 cutter hours.....\$76,000



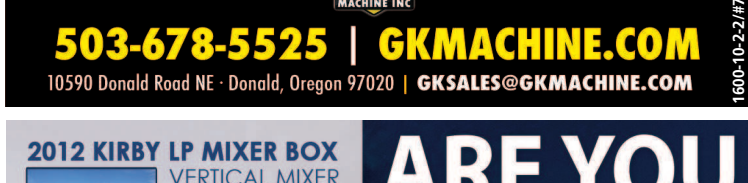
1995 John Deere 6710 w/JD 630 grass head, field ready.....\$55,775

1997 Freightliner F80 w/20' Artex front/rear unload silage box, Cummins, 6 speed auto.....\$42,435

1983 Kenworth W900 w/23' live floor silage box, 400 Cummins, 13 speed.....\$23,900

Lots more at: www.TJEquipmentLLC.com 360-815-1597 Lynden, WA 10-4/18

COMFORT STATIONS TOILET TRAILERS



GK Machine's Toilet Trailers meet OSHA Sanitation Requirements for Agriculture

NEW Optional 'Deluxe Unit' - includes a new RV style pump-toilet to assist with sanitary flushing and allows for easy transport from location to location!

SINGLE OR DOUBLE HOUSE TRAILERS Econo, Standard or Deluxe stations

STANDARD INCLUDES: stainless steel sink and fresh water tank, chemical toilet, plastic waste tank, trailer with lights, dump valve kit, soap & towel dispensers, drinking fountain and garbage can

503-678-5525 | GKMACHINE.COM 10590 Donald Road NE - Donald, Oregon 97020 | GKSALES@GKMACHINE.COM 1600-10-2-2/17

NDE 2906 Dual Mixer • 1228-1407 cu ft Many Options Available



Only Brand With New Step Floor Design For Small Loads. Fast Clean Out. Lifetime Sharp Carbide Knives. 10-2/18

GET 'EM AT FARMLAND NOW!

12' Brown Bear Compost Turner, 3pt PTO driven. Excellent condition. \$15,000 \$12,000

JD 740 Loader.....\$6,000

JD 6100D Tractor, 4WD, open ROPS....\$25,000

Freeman 370T Baler, field ready.....\$12,500

Case IH 1010 Header, 30' w/trailer.....\$4,500



Farmland Tractor Supply Tangent, Oregon 877-928-1646 541-928-1646 32427 Old Hwy, 34 Tangent, OR 97389 10-1/18

Containers For Sale