

1560 Tractors

2005 John Deere 8420: ILS front end. 2000 John Deere 8110. Silverton, OR. 503-932-8006

8320 John Deere: duals, deluxe cab, \$82,500. Silverton, OR. 503-932-0766

Attention: Wanted Kubota or John Deere, 4x4 compact tractor with loader/ equipment. Carlton, OR. 503-550-0094

Case IH 4494 Tractor with 7000 hours: 200 hp, 4 new inside tires, PTO and 3-Point hitch. Everything works, no leaks, good condition, \$21,000. Pictures available. Middleton, ID. 208-477-8019

Caterpillar D6D-SA-5X1160: Aftercooled, direct injected 3306, 5 speed, \$35,000 in Western States receipts in past 3,000 hours, \$22,500. Ritzville, WA. Call or text 509-660-0552

FOR SALE: CHALLENGER 75C
1994 s/n# 04kk00811, 3-point, four remotes, 90% heavy duty tracks, 9700 hours, Western States engine in frame overhaul at 9181 hours. Good machine. \$48,500. Echo, OR. Call Paul 541-379-4020.

Ford 5600 Diesel with Loader: fire damage, salvage tractor, work in excellent shape. Boardman, OR. 541-571-2387



International 5288: nice and clean with 5974 hours, DT466 engine, duals, new interior. Good running tractor, \$17,000. North Spokane, WA. 509-994-9520

John Deere 3010 Tractor: with John Deere 3020 rebuilt motor, new starter, alternator, clutch, good rubber, clean, after market cab. Canyon City OR. 541-542-2162

John Deere 4010 Diesel: duals, recent major, dual remote. Early 1950s International C with loader, wide front. Ellensburg, WA. 509-925-2263

JOHN DEERE 4760 TRACTOR
MFWD, Duals, Quickhitch, 5600 hours and Good Condition, \$43,000. Salem, OR. 503-932-0933

JOHN DEERE 8400:
Front and rear duals, approximately 5000 hours on full rebuild, good shape, \$47,500. Hubbard, OR. 503-710-0105

Looking for 60-70 hp Diesel with Loader: good to excellent condition. Boardman, OR. 541-571-2387

Massey Ferguson 135: Gas, 2600 hours, excellent condition, \$4000. Gaston, OR. 503-662-5401



Steiger ST310: very strong engine, needs clutch, \$11,500 OBO. McArthur, CA. 530-249-3283

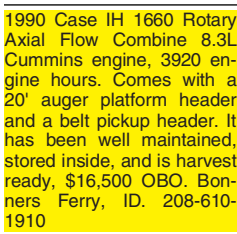
1600 Farm Equipment

(400) Gallon Blue Line Air Blast: turning hitch, \$12,000. Silverton, OR. 503-932-0766



14' SCHMEISER ROLLER
14' Schmeiser roller with transport, 22" rings, \$5600. Boring, OR. Jeff 503-720-8434.

1987 Littau Berry Picker: newer Cummins diesel engine, rotary head, side row, \$37,500 OBO. Silverton, OR. 503-999-7493

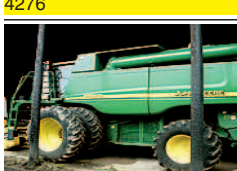


1990 Case IH 1660 Rotary Axial Flow Combine 8.3L Cummins engine, 3920 engine hours. Comes with a 20' auger platform header and a bell pickup header. It has been well maintained, stored inside, and is harvest ready, \$16,500 OBO. Bonners Ferry, ID. 208-610-1910

1995 MacDon 9000 Swather: very good condition, with 930 14' grass seed special auger head, 1768 hours, turbo, 2 speed, extra sickles, \$22,000 Woodland, WA. Call 360-607-2481



200 GALLON REARS SPRAYER:
30' boom and foam marker, excellent condition \$4,950. Rochester, WA. 360-239-4276



2005 John Deere 9760 STS Combine: Contour Master, duals, chopper, \$69,500. Hillsboro, OR. 503-939-9241

2005 UNVERFERTH 220 ROLLING HARROW: 33' working width, good condition, \$8,500. Elma, WA. 360-470-0669

2009 Summers Ultra Ultimate Sprayer: 133' booms, 1500 gallon poly tank, No-rac auto boom height control, John Deere rate controller, 5 section boom controller, poly mix tank, 24.5 diamond tread tires, \$24,500 OBO. Heppner, OR. 208-610-1910

1600 Farm Equipment

2007 Littau: Over the row berry picker. 342 hours. Updated catcher plates, \$108,000. 2 used triple shot propane cannons, \$650/ each. St. Paul, OR. 503-932-8871

2012 Case IH 1220 Vacuum Planter: 511 total acres, 6 row 30", dry fertilizer with hopper extensions, no-till fertilizer coulters, row cleaners, Early Riser III monitor, corn and bean plates, markers, \$35,000. Amity, OR. 503-932-0543



2015 Great Plains 3S-3000HD Drill: 6" spacing, 4200 acres, \$57,500. Fairfield, ID. 208-539-0087

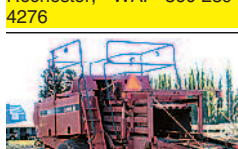
30.5-32 Firestone: 23 degree, 12 ply, 30 to 40 percent, \$850 each. Albany, OR. 541-619-4720, 541-401-7725



5300 Freeman Bale Wagon: Good condition, tires 90%, 4776 hours, \$48,000, Orovada, NV. 775-530-9689



700 INTERNATIONAL 13' DISC:
Field ready disc, new wheel bearings, \$5,000. Rochester, WA. 360-239-4276



Case 8585 3x4 Baler (same as Hesston 4790): 52,980 Bales. Serviced this spring, owned 6 years, approximately 1200 bales per year, new teeth, \$20,000. Moses Lake, WA. 509-750-6337

Case IH 165: 5- bottom plow, very good condition, stored inside, \$10,500 OBO. International 14' offset disc, \$4500 OBO. Silverton, OR. 503-999-7493

Case IH 3900 Disk: 32' with attached harrow, good condition, \$12,000. Forest Grove, OR. 503-310-2524

Case: 13' 3-point chisel plow, \$2750. Silverton, OR. 503-586-6641

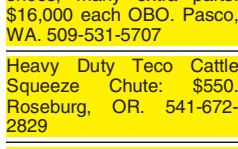
DUK
Rears, DUK 351 engine, 525 gallon tank, 60' boom, tundra tires, \$39,500. Hubbard OR. 503-710-0105

Farmall Cub: with Agri-weld row sprayer, 12 volt, also plow and sickle mower, \$4500. Cornelius, OR. 503-793-8231

Flory Sweepers: Cab and open station, starting at \$21,000. Silverton, OR. 503-932-0766

MINT DISTILLATION UNITS
10 Newhouse Distillation Units. New style, 5 years old, used 3 seasons. Made out of aluminum. Just like new! Saint Paul, OR. Call Mark 503-580-7266

MINT DISTILLERY EQUIPMENT
12 bay mint still. Boilers, condensers, separating cans, re-distills. Lots of new piping, valves, pumps, tanks, electrical panels and other parts. 18' Newhouse tubs. New Holland 240 pull chopper with dolly. Junction City, OR. Call for pictures, information. 541-554-4891



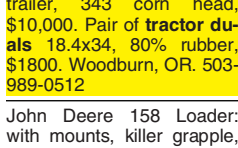
HEAVY HARROWS
Custom built Heavy Harrows starting at \$850/ foot. Independence, OR. Call Shane 503-586-4564

Howse Brush Hog Mower: 42' cut, like new with manual, \$700 OBO. Kubota U-15 Excavator: excellent condition, with manual, \$14,900 OBO. Sweet Home, OR. 541-405-2227

I Am Looking For Land To Lease: for hunting deer, elk, and/ or upland game birds. Please call Sam at 229-378-4630

International 400 Air Planter: with spray equipment, \$3200. Massey Ferguson manure spreader, \$2500. John Deere 900, 5 shank ripper, \$2500. John Deere 950 switch plow 3-18, \$6000. John Deere 4400 diesel combine, 14' grain head with transport trailer, 343 com head, \$10,000. Pair of tractor duals 18.4x34, 80% rubber, \$1800. Woodburn, OR. 503-989-0512

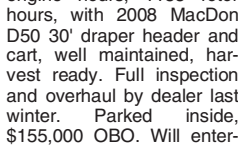
John Deere 158 Loader: with mounts, killer grapple, great shape. Powder River, self head catch mounted on a old squeeze chute. Canyon City, OR. 541-542-2162



2010 Gleaner R76: 1488 engine hours, 1185 rotor hours, with 2008 MacDon D50 30' draper header and cart, well maintained, harvest ready. Full inspection and overhaul by dealer last winter. Parked inside, \$155,000 OBO. Will entertain partial trades for farm equipment. Heppner, OR. 208-610-1910



JOHN DEERE 995 SWITCH PLOW:
John Deere 995, 5 bottom on-land switch plow. All wear parts in excellent condition, \$9400. Boring, OR. Jeff 503-720-8434



2005 UNVERFERTH 220 ROLLING HARROW: 33' working width, good condition, \$8,500. Elma, WA. 360-470-0669



2009 Summers Ultra Ultimate Sprayer: 133' booms, 1500 gallon poly tank, No-rac auto boom height control, John Deere rate controller, 5 section boom controller, poly mix tank, 24.5 diamond tread tires, \$24,500 OBO. Heppner, OR. 208-610-1910

1600 Farm Equipment

John Deere 2800: 5 bottom plow, 18", good condition, \$5,500. Vancouver, WA. 360-901-4750

John Deere Hoe Openers: fits grain drill, \$2,400 for set 24. 16.9-30 Duals, tires 85%, wheels and hardware, new powder coating, \$1,350. Albany, OR. 541-990-2018

Kenoco Bed Shaper: plastic mulch layer, water wheel transplanter. Many attachments, lightly used, \$11,000. Silverton, OR. 503-586-6641

Krause: 42' cultivator, K-tine twisted shanks, 5 sections, Morris harrows, Bourgaunt points and sweeps, \$7,500. 4 IH 150, 18" split packer drills, no hydraulics, new Stoess hitch, \$9,000. EZ-ON, 28' disc with Calkins harrows, \$4,500. Ritzville, WA. 509-660-0552



89 John Deere 4955: 8654 hours, great shape \$37,500. Krause 5815W offset disk, 28" blades, 15' wide, \$10,500. Blue Jet 5 shank in line ripper \$3,250. John Deere RR2 3pt cultivator with gage wheels \$1,200. Buhler 10' 3pt hydraulic blade \$3,600. Gresham, OR. Tim 503-719-2545

Boom Mower
3 point, self contained, hydraulic, 60" deck, 20' reach, rear fold to 8' transport. Over 50 other mowers from 42", 3 point, to 15' wing fold pull in stock. American Made Since 1958. Hardee by evh mfg. co. www.pacific-states-equipment.com 208-543-6319



Landoll 6230 Disk: 26', 3-tine bar harrows, field ready, \$31,500. Fairfield, ID. 208-539-0087

Largest Amount of Used Farm Equipment in the valley. If you didn't shop here you have paid too much. Independence, OR. 503-838-3740, 503-383-6722

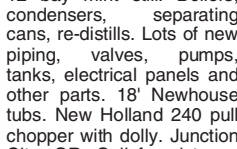
Littau Berry Machine: beater style, picks great, \$9,500. RES custom made berry pruner, like new, \$6,500. Beaver Creek, OR. 503-632-4409

MacDon 9352C Swather: 850 hours, 972 draper head, many extras, excellent condition, stored inside, completely rebuilt and field ready, \$65,000 Silverton, OR. 503-999-7493

Melroe 7 bottom plow: \$6500. Located in Jefferson, OR. 541-327-1645

MINT DISTILLATION UNITS
10 Newhouse Distillation Units. New style, 5 years old, used 3 seasons. Made out of aluminum. Just like new! Saint Paul, OR. Call Mark 503-580-7266

MINT DISTILLERY EQUIPMENT
12 bay mint still. Boilers, condensers, separating cans, re-distills. Lots of new piping, valves, pumps, tanks, electrical panels and other parts. 18' Newhouse tubs. New Holland 240 pull chopper with dolly. Junction City, OR. Call for pictures, information. 541-554-4891



Model 125 Hesston Manure Spreader: in excellent shape, \$6,700. Silverton, OR. 503-932-2037



NEW DUCK TUBES:
Rub Duk Enterprises, LLC. Albany, OR. 541-619-4720, 541-401-7725

New Holland 505, lots of updates. Hesston 4690S, 1580 hours. Ford 7740, runs great. New Holland 1095 balewagon, new tires, 1 owner. All field ready. Turlock, CA. 209-595-4675

NEW HOLLAND 900 Forage Harvester: w/ grasshead. Comes w/ extra parts \$3950. Elma, WA. 360-470-0669



NORTHWEST FILTER CLEANING
Save your green and have your filters cleaned! Cleaning Agriculture, Construction, and Industrial filters since 1985. Call today for your free quote and ask about our multiple filter discounts. dan@pfpokane.com shawn@nwfc.com 4008 E. Broadway, Spokane, WA. 99202 1-877-891-0290

Packer Wheels for John Deere 455 Grain Drills: 4" double rib. Used one season, always stored inside since taken off. \$1800 OBO. Bonners Ferry, ID. 208-610-1910

RENALDO PLASTIC MULCH PLANTER
Vacuum, 2 lines, water injection, \$12,000 FOB. Madera, CA. 559-352-1700

John Deere 7700 Combine Parts: many to pick from. Make offer. Halsey, OR. 541-974-9701

TRACTOR TIRES WITH WHEELS
Complete set (inner & outer) from rear axle John Deere 8420. 480/80R50 Good Year 50%. \$4000 OBO. Mt. Angel, OR. 503-932-8693



2005 UNVERFERTH 220 ROLLING HARROW: 33' working width, good condition, \$8,500. Elma, WA. 360-470-0669

For All Your Farm Equipment Needs
www.TJEquipmentLLC.com
TJ EQUIPMENT LLC
360-815-1597 • Lynden, WA 9-27#8

GET 'EM AT FARMLAND NOW!
12' Brown Bear Compost Turner, 3pt PTO driven. Excellent condition. \$15,000 \$12,000
JD 740 Loader.....\$6,000
JD 6100D Tractor, 4WD, open ROPS.....\$25,000
Freeman 370T Baler, field ready.....\$12,500
Case IH 1010 Header, 30' w/trailer.....\$4,500

Farmland Tractor Supply
Tangent, Oregon
877-928-1646
541-928-1646
32427 Old Hwy. 34
Tangent, OR 97389 9-17#5

TONS OF USED FARM WHEELS
AG WEST TIRE FACTORY
Rickreall
503-623-9171 ~ Mike 9-17#7

TRUCKS, CUSTOM BEDS & TRAILERS
GRASS SEED SPECIAL HYDRAULIC COVER
• Provides a wind break when you're unloading the combine. Easy open & close. Weather tight.
• Hydraulic tailgate
• Opens 4' by full width of the bed. Tailgate slides straight up to eliminate restriction. • Call for quote.

www.EconomyTruckSales.com
economytrucksales@charter.net Ph 509-525-3322
Walla Walla, WA Cell 509-200-1020 9-27#16

Diesel Fuel Injection Service
Pumps • Injectors • Turbos
Factory Authorized Bosch • Stanadyne • Denso • Yanmar • Zexel / Kiki • Delphi / CAV
We also service CAT & Cummins
(503) 235-1947
(888) 285-1213
8922 NE Vancouver Way, Portland, OR 97211 9-27#18

Western STORAGE TRAILERS
1-800-OK-2-RENT
Rent or Sale
Containers and Trailers
1-800-652-7368

CONTAINERS: 20' & 40'
TRAILERS: 27', 40', 45' & 48'
Western Mobile Storage
1-800-652-7368 • 541-342-1835
Eugene, OR 1600-9-5-1/#5 9-27#18

Farm Equipment for SALE

International 375 Swather, with hay conditioner.....\$3,500
John Deere 466 Motor.....\$4,000
1973 Kenworth w/22' bed.....\$5,500
International Springtooth Vibra-Shank, 55 ft.....\$4,500
Coil Tine Harrow, 250 per section
John Deere 222 Header.....\$750
Summers Harrow, 74 ft. Herman Spring Harrow.....\$15,000
Hay Grapple.....\$2,250
Calkins Springtooth, 36 ft.....\$3,500
John Deere 800, 50 ft. Rodweeder.....\$3,000
John Deere 330 Disc, 30 ft.....\$7,000

Milton-Freewater, Oregon
509-386-4876 9-17#1D

Containers For Sale
• 20' and 40'
REFRIGERATED CONTAINERS AVAILABLE

Portland Container
9449 N. BURGARD WY., PORTLAND OR 97203 9-17#14
In Portland, call Mike at (503) 546-2914
Outside Portland: 1-800-788-5159
pccranman@msn.com 1600-9-5-1/#8

MERIDIAN EQUIPMENT
Serving the Pacific Northwest Since 1973

Allis Chalmers 185 w/Loader PTO, 3 Point \$8,995
Komatsu FG25 Forklift 5000lb. Capacity, Propane, Triple Mast. \$8,500

John Deere 455E Crawler/Loader \$18,500
John Deere 6200 w/New Alo Quickie Loader, 4WD, 3 pt., PTO. \$23,500

West Coast's m.e. Miller tire distributor
www.meridianeq.com
360-398-2141 • Bellingham, WA 9-17#18

1600 Farm Equipment

WILLMAR 6400
Low hours, 70 foot booms. John Deere steering and rate control, new 600 gallon tank 9.5, 12.4 and Tundra tires available. Hubbard, OR. 503-710-0105

WILLMAR 765
New motor, new hubs, new wheel motors, new tank and new 9.5 tires, \$45,000. Hubbard, OR. 503-710-0105



John Deere 4030: cab, new tires, 7,000 hours, quad range, \$16,000. Amity, OR. 503-435-7504



PORTABLE GRAIN AUGERS
Westfield WR100-61, 10' D x 61', 20HP electric motor, \$7500. Also Westfield Transfer Auger, 10' with 67" x42" hopper with 2 feeder screws, 5HP electric motor, \$3500. Redmond, OR. 541-480-1307 or 541-923-3565



Reigi 1 one row weeder, shedded, like new, \$2000. Ellis one row transplanter, Shedded, like new, \$900. Scare-Away propane scare cannon, new condition, \$350. Bird Gard pro plus electronic bird scare system, new condition, \$350. Large propane chili pepper roaster with motor on wheels, new condition, \$895. Billings, MT. 406-698-3806

Schmeiser Seed Bedder with Rear Hitch: 14', good condition, updated axle, new tires, \$14,000. 14' Case IH 6200 drill, 7" spacing. Good Condition, \$4,000. Eltopia WA. 509-727-5073 or nathan@victoryagllc.com



SPOT SPRAY BUGGY
3 hours on a Briggs 10.5HP engine. Shurflo 3 gpm on demand pump. 13' boom with 6 sprayer wands. Hydro transmission. 30 gallon poly tank with Banjo fittings. \$4549 OBO. Independence, OR. 503-420-2653.



BOYD'S IMPLEMENT
www.boyds-implement.com
1-877-842-9408
Tillamook, OR
Kubota Kuhl-Knight
NUHN GEHL BALZER

MCCORMICK
NEW Kubota 126 (108 PTO hp) & 135 (118 PTO hp), cab, 4WD, rental returns.....
NEW Kuhn 4052 Horizontal Mixer, 520 cu. ft., high roughage option, SL124 slinger
NEW Kuhn GMD 600 Mower.....\$9,000
NEW Land Pride 42" to 12' Pasture Mowers.....
NEW Kubota RA 2584 Rake, 24'11"-27'7".....
NEW Kubota BH75 & 90 Backhoe units, fit 20-50hp.....
Special Prices
Kubota B1550HST, 15 hp, 4WD, 1800 hrs, loader, \$5,000
CAT 910 Articulating Loader, tight unit, SN6857.....\$16,500
Gehl 5240 Skid Steer.....\$12,500
New Holland L35 Skid Steer.....Coming In
Komatsu SK1020 Skid Steer.....\$9,500
Ford 530 Baler.....\$1,000
Schulte F10 10' Rotary Cutter.....\$7,500
Kuhn FC4000G Mower Conditioner.....\$15,000
New Holland 3118 Slinger, 16 yd., flotation.....\$7,500
Skid Steer Manure Agitator, 8'.....\$2,000
Demco 50 gal. sprayer, Honda, trailer.....\$1,000
Howard 54" Tiller..\$1,000
Kidd 610 straw chopper.....\$1,500 as-is
Kidd 804 straw chopper.....\$2,000 as-is
Braber BE post hole digger.....\$500

Don't See It? Give Us a Call! 9-17#14

1600 Farm Equipment

Reverse Osmosis Water Treatment Plant/ Leachate: Pumps, electrical, filters, tanks. Used very little, \$75,000 or trade (original cost \$300,000). Creswell, OR. 541-912-7807

Wanted: John Deere Green Star Display with SF1 activation. Gresham, OR. Tim 503-719-2545

14th Annual Orchard, Nuts & Vines Special Section

Capital Press Agriculture Weekly will publish a Special Section featuring orchard, nut and vine articles and advertising on **April 14, 2017**

By advertising in this Special Section, you'll be reaching over 89,000 print and online readers in California, Idaho, Oregon and Washington who make the buying decisions for your product or service!

Space deadline is March 17th

Contact your Capital Press sales representative or call 800-882-6789. www.capitalpress.com 1600-7-4-2/#13