

80 Trucks

1973 Red Ford Truck: with seed racks, hoist, 18 foot bed. Halsey, OR. Call 541-974-9701

1986 Kenworth: 425 CAP, 13 speed, 216" wheelbase, \$12,000. 2008 25' Wildwood camp trailer, \$8,750. 2001 10.5' Artic Fox camper, \$7,500. Kimberly, OR. More Info On Any - Call Brad 541-934-2143.



1988 Freightliner: 3406 cat, 9 speed, air ride, 22'8"/6' bed with roll tarp. \$25000 OBO. 503-939-3507

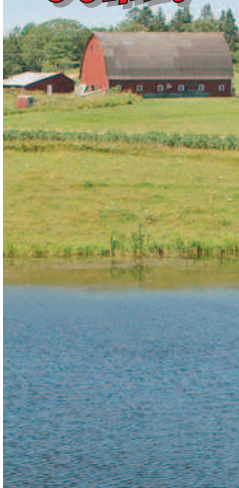
2000 FREIGHTLINER CENTURY
Condo Sleeper, Air ride, 10 speed, Aluminum wheels, 5th wheel slider, 430HP Good running truck, \$7,000. Salem, OR. 503-576-0479



New and Used Buses In Inventory!
Starting at \$6,500
Brattain International, Albany, OR. 541-928-3324, ext. 2.

ONE OWNER KENWORTH T300
Illness forces sale of well-maintained, gently used 2006 Kenworth T300. 8LL Transmission, 10' Hassell 3/16 AR-400 box with high-lift gate. Under 30,000 miles. Current license. Ferndale, CA. For more info: sprucepointfarm@gmail.com

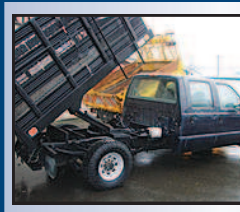
HAVE PROPERTY FOR SALE? LOOKING TO BUY SOME?



Put your property in front of people that are ready to buy.
FarmSeller.com is America's farm and ranch database.
FarmSeller.com 800-882-6789
Powered by Capital Press

80 Trucks

DORNGOODDEALS.COM



1999 FORD F-350 XL CREW CAB, 2WD, Dump, 5.4 V8, auto, air, 8' dump bed w/40" side racks, only 110K miles..... **\$10,995**



2011 FORD SUPER DUTY F-350, Utility Box, XL, 6.7L, OHV 32 valve, V8 Power Stroke Diesel..... **\$17,995**



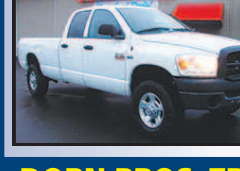
2001 FORD SUPER DUTY F-350 CREW CAB, 4X4, XLT, 7.3 Power Stroke Diesel, loaded, leather, 156K miles..... **\$15,769**



2008 FORD SUPER DUTY F-350, Ext. Cab, XL, 4X4, Dually, power windows and locks, tilt, cruise, AC, 144K miles..... **\$15,995**



2006 CHEVROLET COLORADO EXT. CAB, 2WD, 5cyl., auto, air, tilt, cruise, 138K miles..... **\$6,995**



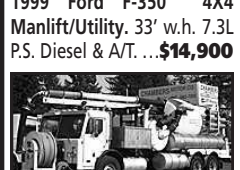
2008 DODGE RAM 2500, 4WD, Quad Cab, automatic, power windows & locks, tilt, cruise, 14k miles..... **\$12,859**

DORN BROS. TRUCK SALES, Inc.
SINCE 1947
VOTED QUALITY DEALER OF THE YEAR.
3130 PORTLAND RD. • SALEM, OR (503) 585-4731
Prices good for 1 week from publication date.

CAPITAL PRESS CLASSIFIEDS CALL 1-800-882-6789 FAX (503) 370-4383 www.capitalpress.com



1999 Ford F-350 4X4 Manlift/Utility, 33' w.h. 7.3L P.S. Diesel & A/T. ... **\$14,900**



2001 Peterbilt Vector 2100, Low Time & Miles. Municipal Maintenance..... **\$89,500**



2009 Chev 2500 4x4 Utility/Service Unit, 6.0 L V-8 & A/T. 8' Box with Rack..... **\$10,900**



2006 Ford F-350 1 Ton Utility/Service, 9' Bed. Overhead Rack. 6.0L P.S..... **\$11,900**



2008 Ford E-450 Shuttle Bus, 16 Seats and Space for 2 Wheel Chairs. 6.0 L P.S. & A/T..... **\$12,900**

GEARING UP FOR SUMMER EXPANSION.
WE NEED: 1 More Full-Time Salesperson.
WE NEED: 1 Mechanic or Mechanics/Helper.
WE HAVE: Nearby Housing Available.
YOU NEED: H.S. Education.
WE ARE: Non-Smoking Environment.
Please Call John Chambers 503-887-0070
ChambersMotorCo.com
(503) 663-7200 • Boring, OR

80 Trucks

BEST SELLERS ...
...Sold everything in the herd but a couple of old bulls.
Kester Ranch, Cottage Grove, OR
Call 1-800-882-6789 and sell tool!

USED BUSES FOR SALE

WESTERN BUS SALES, INC.
www.westernbus.com • (800) 258-2473
30355 S.E. Hwy 212, Boring, OR 97009
Expansive Inventory • Low Prices • Service • Parts

80 Trucks

2004 Freightliner: 3- axle tractor, day cab, Mercedes engine, 10 speed, 470,000 miles, very good shape, \$14,500 OBO. Cornelius, OR. Jeff 503-341-4289

POWER
YOUR REGIONAL COMMERCIAL DEALER FOR NEW AND USED

We have New and Pre-Owned Commercial Vehicles
Contact us today to see what we have waiting for you!

CALL JIM OR PHIL 1-844-421-5667

POWER FLEET - COMMERCIAL
Email: fleet@powerautogroup.com • www.powerautogroup.com

80 Trucks

2004 Freight Liner M2: single axle, cab and chassis, \$12,500. Silverton, OR. 503-932-0766

WANTED
"Fairly Honest Neil"
I BUY TRUCKS
Specializing in Running or NOT!
In The Pacific Northwest
503-521-6935
HAGERMAN INC
7100 N.E. Columbia Blvd
Portland, OR 97218
neil@hagermanparts.com

KENWORTH T800 4-AXLE CHASSIS

Cummins ISX engines, 18-spd. trans. (RTLO18918B), single spd. Eaton rear-ends 4:10 or 4:11 gears w/locker, Hendrickson Haul-Max walking beam susp.

15 Trucks To Choose From Your Choice \$55,000

#15 R118642 2006, D46-170hp rears, 252" WB, 475hp.....\$55,000
#26 R087301 2005, D46-170hp rears, 253" WB, 475hp.....\$55,000
#32 R087306 2005, D46-170hp rears, 253" WB, 475hp.....\$55,000
#35 R087305 2005, D46-170hp rears, 251" WB, 475hp.....\$55,000
#96 R087295 2005, D46-170hp rears, 250" WB, 475hp.....\$55,000
#99 R054031 2004, DSP-463P rears, 250" WB, 475hp.....\$55,000
#57 R383801 2003, DSP-463P rears, 250" WB, 475hp.....\$55,000
#67 R391638 2003, DSP-463P rears, 250" WB, 475hp.....\$55,000
#113 R897697 2002, DSP-463P rears, 250" WB, 475hp.....\$55,000
#115 R897698 2002, DSP-463P rears, 251" WB, 475hp.....\$55,000

CLEAN AND IN EXCELLENT SHAPE! MAINTENANCE RECORDS - REGULAR OIL SAMPLES

For more info: www.irelandtrucking.com
Thomas H. IRELAND INCORPORATED Call Charles Ireland 541-863-1501 Myrtle Creek, OR

R.B. BROWNS TRUCKING

1994 PETERBILT 377GL
Set forward front axle. 242" WB, Cummins BC400, RTO 16713 trans. RT46-160 rear axles with lockers. 3.91 ratio. Air Trac susp., Air Scale log trailer and truck equipment. 508,000 on rebuilt engine, 248,000 on rebuilt trans and 555,000 on drop ins. #RB39..... **\$13,500 \$12,900**

1990 PETERBILT 377
Set forward front axle. 240" WB, Cummins BC400, RTLO 14913 trans. RT46-160 rear axles. 4:10 ratio. Spring over walking beam susp., (RTEA) HD alum frame. 390,000 on rebuilt engine, 250,000 on trans and 253,000 on drop ins. Air Scale log trailer and truck equipment. #RB32. **\$43,500 \$12,900**

1993 RAVENS 48'X102" with curtain top
Roll up rear door. Spread axle air ride with scales. LP 22.5 rubber on alum wheels. Tires are 70%; no caps. Tool box on driver side. Clean trailer! RB T-150..... **\$10,900**

1999 PETERBILT 378
w/C12 CAT, 430hp, 18 speed trans, DS405 rears, 3:90 ratio. PB Air Trac susp. 252" WB. 700,000 on engine since rebuilt. 246,000 on trans. and clutch. 823,000 on rears. 11R22.5 rubber 80% on steers and 60-70% caps on drive axles. 1968 General air scale log trailer and truck equipment..... **\$47,500 \$15,500 for package**

3 SETS OF A-TRAINS
40' lead trailer w/20' 3-axle pull trailers

1984 Utility w/1986 Alloy.....\$21,500
2000 Alloy w/1992 Comet.....\$23,500
1996 Western w/1996 Western.....\$24,500

2005 WILSON 53'X102" ROAD BRUTE
4 axle flat. 3 axle air ride with 4th axle lift steerable. 60" axle spacing, air scales and dump valve. LP 22.5 tires. Alum wheels..... **\$33,950**

5758 Crater Lake Ave. | Central Point, OR
541-601-0635 or 541-826-2418
rweathers@rbbrowns.com
Contact Ron Weathers

LOVELL Truck Sales 50th ANNIVERSARY

(5) 2007 Sterling 3-Axle Day Cabs
Series 60 14L, 10 spd, PS, AC, CC, engine brake..... **\$21,500**

1991 Freightliner Tandem Axle
FLD-120, Cummins, Big Cam 4, 13 spd., PS, engine brake... **\$6,500**

2007 Isuzu NRR
Diesel, auto transmission, PS, AC, low miles..... **\$17,500**

(3) 2005 Peterbilt 379
ISX Cummins, 10 spd, engine brake, air slide, 5th wheel, PS, AC, good Dynos..... **starting at \$24,500**

2006 Peterbilt 378 3-Axle Day Cab
CAT C-15, 470hp, 10 spd., engine brake, PS, AC, CC..... **\$27,500**

2005 Peterbilt 385 3-Axle Day Cab
CAT C-13, 430 hp, 10 spd., 4.11 gears, PS, AC, CC, Jake, 184" WB, good Dyno..... **\$24,500**

1998 Utility Reefer
48x102 trailer, newer carrier unit with low hrs..... **\$8,500**

2005 Princeton Forklift
PB-5,000 lbs., 45" Transcraft flatbed, sliding tandems..... **\$32,500**

2004 48' Curtain Van Transcraft
Sliding tandems, very clean. **\$18,500**

2010 Freightliner Cascadia 3-Axle day cab.
18 spd auto shift, diff lock + full lockers, DD 15 500hp, PS, AC, CC, power windows, air ride cab, engine brake, aluminum wheels, dump valve, 196" wheelbase, good Dyno..... **\$27,500**

2000 GMC C-7500
24' box, rail gate, CAT 3126, 210 hp, 6 spd, 32,000 GVW, 259" WB **\$8,500**

2- 2006 Volvo VNL64 3-Axle Day Cab
Cummins ISX, Jake, 10 spd, PS, AC, CC, air ride cab... **\$16,500**

2002 GMC C-7500
24'x102" box, Tuckaway liftgate, Duramax diesel, automatic transmission..... **\$9,500**

1-800-451-0012
(503) 266-5886
FAX (503) 266-6903
LOVELLTRUCKSALES.COM
680 SW 1st (Hwy 99 East) Canby, OR

80 Trucks

Truck Scales: 90' x 10', with printer and read out, \$21,500 OBO. Cornelius, OR. 503-341-4289

WANTED
"Fairly Honest Neil"
I BUY TRUCKS
Specializing in Running or NOT!
In The Pacific Northwest
503-521-6935
HAGERMAN INC
7100 N.E. Columbia Blvd
Portland, OR 97218
neil@hagermanparts.com

KENWORTH T800 4-AXLE CHASSIS

Cummins ISX engines, 18-spd. trans. (RTLO18918B), single spd. Eaton rear-ends 4:10 or 4:11 gears w/locker, Hendrickson Haul-Max walking beam susp.

15 Trucks To Choose From Your Choice \$55,000

#15 R118642 2006, D46-170hp rears, 252" WB, 475hp.....\$55,000
#26 R087301 2005, D46-170hp rears, 253" WB, 475hp.....\$55,000
#32 R087306 2005, D46-170hp rears, 253" WB, 475hp.....\$55,000
#35 R087305 2005, D46-170hp rears, 251" WB, 475hp.....\$55,000
#96 R087295 2005, D46-170hp rears, 250" WB, 475hp.....\$55,000
#99 R054031 2004, DSP-463P rears, 250" WB, 475hp.....\$55,000
#57 R383801 2003, DSP-463P rears, 250" WB, 475hp.....\$55,000
#67 R391638 2003, DSP-463P rears, 250" WB, 475hp.....\$55,000
#113 R897697 2002, DSP-463P rears, 250" WB, 475hp.....\$55,000
#115 R897698 2002, DSP-463P rears, 251" WB, 475hp.....\$55,000

CLEAN AND IN EXCELLENT SHAPE! MAINTENANCE RECORDS - REGULAR OIL SAMPLES

For more info: www.irelandtrucking.com
Thomas H. IRELAND INCORPORATED Call Charles Ireland 541-863-1501 Myrtle Creek, OR

CLASS 8 TRUCKS
509-534-9088 • SPOKANE, WA
Answering machine after hours

YARD SPOTTERS IN STOCK
2009 and older units
Starting at \$8,500

(2) 2001 TRAILMAX TILT DECK
21 ton, 25' tilt + 5' stationary, air brakes, 22.5 tires, good rubber & brakes. **\$14,900 ea.**

(8) 2007 IH 4300
DT466, Allison Auto, 16' insulated box, all under 200k miles, will remove box if needed. **\$19,900**

1994 FREIGHTLINER FLD120
Detroit S60, 9 speed Flat top sleeper
Call

2000 Volvo flat top sleepers
N14+ 10 speed, 390 ratio 2 to choose from, line wet kit.
Call

OTC Oregon Truck Center
6505 NE Columbia Blvd
Portland, Oregon
(503) 288-1118
www.oregontruckcenterinc.com

2006 Freightliner Columbia 120 12.7L Detroit, 445 hp, tandem axle, engine brake, 3.73, 470K. Stk#5736. **\$31,500**

(3) 2007 Freightliner M2-106 Single Axle Tractor, Cat C-7, (2) w/Allison automatic, (1) 9-spd, miles from 128k-236k, Stk#s 5761, 5762 & 5763. **\$22,500**

2007 Isuzu NPR, 12x90" reefer truck, Carrier engine driven reefer unit. 14,500 #GVW, 4 cylinder, turbo diesel, 190hp, automatic w/OD, 206,258 miles. Stk# 5750..... **\$22,500**

(4) 2007 Freightliner M2-106 24'x102" Flatbed Trucks, Cat C-7, Allison automatic, NON-CDL, 26,000 GVW, stake sides available, 76K, 93K, 132K & 148K, (2) have tuck away lift gates. Stk#s 5764, 5765, 5766 & 5767. **\$34,950**

2009 Freightliner M2 106 20" Reefer Truck, 26,000 #GVW/NON-CDL, Cummins ISB/240 hp, 6 speed manual, Carrier Supra 6500 Reefer unit w/7488 hrs, 129,482 miles. Stk#5752..... **\$34,950**

(2) 2006 International 4400 single axle, DT466, Allison automatic, 10k FA, 22k RA, 5:29, 151" W/B, 190k miles, dual 70 gal tanks. Stk#5693 & Stk#5694..... **\$22,500 \$19,950**

WW TRAILERS INC.
5000 NE Columbia Blvd., Portland, OR 97218
(503) 821-6000
www.wwtrailers.us

(2) 2006 Ottawa YT 50 Commando Yard Goats. Please call

(4) 2001 Lufkin 48' x 102" steel and wood spread axle air ride flatbeds..... **\$9,250 each**

1994 Comet 48' 3-axle flatbed, steel and wood, F-4001..... **Please call**

1990 Great Dane 48' spread axle, steel frame, wood deck, dropdeck 5-3791L..... **\$9,450**

Agri-Cover® ROLL TARP SYSTEM

AGRI-COVER
Tested • Trusted • Guaranteed

APPLICATIONS:
• Fertilizer Spreaders
• Farm Trucks
• Grain Carts / Wagons
• Belly Dump Trailers

SALES & INSTALLATION

Also Available: Pickup & Truck Accessories RV Accessories

PUMMEL TRUCK SUPPLY CO.
2310 Hoyt St. SE
P.O. Box 12066
Salem, OR 97309
(503) 581-2437
1-800-695-6996
www.pummeltrucksupply.com