

60 Pickups, Vans, SUVs

#1 Pickups: Used Power Stroke & Dodge Diesel 4x4. Call about great tax advantages! Wallowa, OR. 541-569-2352

1987 S10 Chevy Pickup: extra cab, 4x4, \$800. Can be seen at the intersection of Lakecreek Drive/ Peoria Road/ Irish Bend Loop, during day light hours. Halsey, OR. Call 541-369-2691

2001 Ford XLT: super duty, super cab, 2 wd, 7.3 diesel, new windshield, new tires, new transmission at 185,000 miles, 220,000 miles on truck, \$7,500 OBO. Newberg, OR. 503-537-8485

2006 Chevy Silverado 3500 Diesel: 1 ton, 4x4, automatic, 4 door, crew cab, long box, leather interior, am/ fm/ cd, suspension air bags, gooseneck hitch, new turbo/ glow plugs, good tires, 125,000 miles. Excellent condition, \$24,000 OBO. Cloverdale, OR. 503-812-1918

80 Trucks

Used Buses
www.westernbus.com
7-1/88
503-905-0002 • 1-800-258-2473
WESTERN BUS SALES, INC.
30355 SE Hwy 212 • Boring, OR

A picture says a 1,000 words



Add a full color photo to your print and online ad today by calling
800-882-6789
capitalpress.com
Capital Press
The West's Ag Weekly



2001 International 4700. 17' Flatbed with 2500# Liftgate. DT-466 & A/T. Hydraulic Brakes.....**\$12,900**



1999 Ford F-350 Utility/Service with 11'Box. Lumber Rack. 7.3L P.S. & A/T.....**\$11,900**



1999 NPR 12' Flatbed. 5.7L V-8 & A/T.....**\$7,900**



2005 Columbia Freightliner. Tandem Sleeper. 560 @ 515hp. A/T. Air Bags.....**\$19,500**



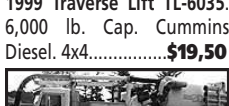
1986 Ford F-700 22' Flatbed with 2500# Liftgate. 370 V-8 5 & 2.....**\$5,900**



1991 GMC 3500 1 Ton Dump. 4x4. 5.7L V-8 & 4-Spd 8' Bed.....**\$10,500**



1999 Traverse Lift TL-6035. 6,000 lb. Cap. Cummins Diesel. 4x4.....**\$19,500**



2001 Peterbilt Vactor 2100. Low Time & Miles. Municipal Maintenance.....**\$89,500**

GEARING UP FOR SUMMER EXPANSION.

WE NEED: 1 More Full-Time Salesperson.
WE NEED: 1 Mechanic or Mechanics/Helper.
WE HAVE: Nearby Housing Available.
YOU NEED: H.S. Education.
WE ARE: Non-Smoking Environment.
Please Call John Chambers
503-887-0070

ChambersMotorCo.com
(503) 663-7200 • Boring, OR

80 Trucks

KENWORTH T800 4-AXLE CHASSIS



Cummins ISX engines, 18-spd. trans. (RTL018918B), single spd. Eaton rear-ends 4:10 or 4:11 gears w/locker, Hendrickson Haul-Max walking beam susp.

15 Trucks To Choose From Your Choice \$55,000

- #15 R118642 2006, D46-170hp rears, 252" WB, 475hp.....**\$55,000**
- #26 R087301 2005, D46-170hp rears, 253" WB, 475hp.....**\$55,000**
- #32 R087306 2005, D46-170hp rears, 253" WB, 475hp.....**\$55,000**
- #35 R087305 2005, D46-170hp rears, 251" WB, 475hp.....**\$55,000**
- #96 R087295 2005, D46-170hp rears, 250" WB, 475hp.....**\$55,000**
- #99 R054031 2004, DSP-463P rears, 250" WB, 475hp.....**\$55,000**
- #57 R383801 2003, DSP-463P rears, 250" WB, 475hp.....**\$55,000**
- #67 R391638 2003, DSP-463P rears, 250" WB, 475hp.....**\$55,000**
- #113 R897697 2002, DSP-463P rears, 250" WB, 475hp.....**\$55,000**
- #115 R897698 2002, DSP-463P rears, 251" WB, 475hp.....**\$55,000**

CLEAN AND IN EXCELLENT SHAPE! MAINTENANCE RECORDS - REGULAR OIL SAMPLES

For more info: www.irelandtrucking.com
Thomas H. IRELAND INCORPORATED
Call Charles Ireland 541-863-1501 Myrtle Creek, OR

CLASS 8 TRUCKS

509-534-9088 • SPOKANE, WA
Answering machine after hours



YARD SPOTTERS IN STOCK
2009 and older units
Starting at \$8,500

(2) 2001 TRAILMAX TILT DECK
21 ton, 25' tilt + 5' stationary, air brakes, 22.5 tires, good rubber & brakes.
\$14,900 ea.

(8) 2007 IH 4300
DT466, Allison Auto, 16' insulated box, all under 200k miles, will remove box if needed.
\$19,900

1994 FREIGHTLINER FLD120
Detroit S60, 9 speed Flat top sleeper
Call

2000 Volvo flat top sleepers
N14+ 10 speed, 390 ratio 2 to choose from, line wet kit.
Call

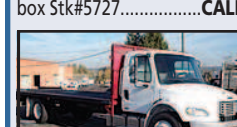
OTC Oregon Truck Center
6505 NE Columbia Blvd
Portland, Oregon
(503) 288-1118
www.oregontruckcenterinc.com



2007 International 4300, PS, cruise, DOT, turbo, DT466, diesel, 220hp, automatic, air ride suspension, 5.29, 50 gal tank, 24"x102" aluminum van box Stk#5727.....**CALL**

(3) 2007 Freightliner M2-106 Single Axle Tractor, Cat C-7, 2 w/Allison automatic, (1) 9-spd, miles from 128k-236k, Stk#s 5761, 5762 & 5763.

2007 Isuzu NPR, 12x90" reefer truck, Carrier engine driven reefer unit, 14,500 #GVW, 4 cylinder, turbo diesel, 190hp, automatic w/OD, 206,258 miles. Stk# 5750.....**\$22,500**



(4) 2007 Freightliner M2-106 24"x102" Flatbed Trucks, Cat C-7, Allison automatic, NON-CDL, 26,000 GVW, stake sides available, 76k, 93k, 132k & 148k. (2) have tuck away lift gates. Stk#s 5764, 5765, 5766 & 5767.

2009 Freightliner M2 106 20' Reefer Truck, 26,000 #GVW/NON-CDL, Cummins ISB/240 hp, 6 speed manual, Carrier Supra 650 Reefer unit w/7488 hrs, 129,482 miles. Stk#5752.....**\$34,950**

(2) 2006 International 4400 single axle, DT466, Allison automatic, 10k FA, 22k RA, 5.29, 151" WB, 190k miles, dual 70 gal tanks. Stk#5693 & Stk#5694.....**\$22,500** **\$19,950**

WW TRAILERS INC.

5000 NE Columbia Blvd., Portland, OR 97218
(503) 821-6000
www.wwtrailers.us



1995 Caterpillar 330E, great shape, T-4021.....**Please call**

2001 Lufkin 48' x 102" steel and wood spread axle air flatbed, steel and wood, F-ride flatbeds...**\$9,250 each**

1989 Reinke 45' spread axle combo flatbed, air ride, F-3990.....**Please call**

1994 Comet 48' 3-axle flatbed, steel and wood, F-4001.....**Please call**

LOVELL Truck Sales 50th Anniversary



(5) 2007 Sterling 3-Axle Day Cabs
Series 60 14L, 10 spd, PS, AC, CC, engine brake.....**\$21,500**



1991 Freightliner Tandem Axle FLD-120, Cummins, Big Cam 4, 13 spd., PS, engine brake...**\$6,500**



2007 Isuzu NRR Diesel, auto transmission, PS, AC, low miles.....**\$17,500**



(3) 2005 Peterbilt 379 ISX Cummins, 10 spd, engine brake, air slide, 5th wheel, PS, AC, good Dynos.....**starting at \$24,500**



2006 Peterbilt 378 3-Axle Day Cab CAT C-15, 470hp, 10 spd., engine brake, PS, AC, CC.....**\$27,500**



2005 Peterbilt 385 3-Axle Day Cab CAT C-13, 430 hp, 10 spd., 4.11 gears, PS, AC, CC, Jake, 184" WB.....**\$24,500**



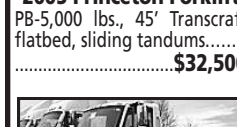
2010 Freightliner Cascadia 3-Axle day cab. 18 spd auto shift, diff lock + full lockers, DD 15 500hp, PS, AC, CC, power windows, air ride cab, engine brake, aluminum wheels, dump valve, 196" wheelbase, good Dyno.....**\$27,500**



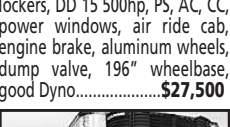
2005 Volvo 3-Axle Day Cab Volvo D-12 435 hp, Fuller 10 spd, 3.90 ratio, air ride, PS, AC, cruise control, tilt and tele, engine brake.....**\$22,300**



2004 48' Curtain Van Transcraft Sliding tandems, very clean.....**\$18,500**



2002 International Single-Axle Tractor automatic transmission, PS, AC.....**\$14,500**



1998 Utility Reefer 48x102 trailer, newer carrier unit with low hrs.....**\$8,500**



2- 2006 Volvo VNL64 3-Axle Day Cab Cummins ISX, Jake, 10 spd, PS, AC, CC, air ride cab...**\$16,500**

1-800-451-0012
(503) 266-5886
FAX (503) 266-6903
LOVELLTRUCKSALES.COM
680 SW 1st (Hwy 99 East) Canby, OR

Coming In This Week
2012 Kw 660 Flat Top Sleeper
2005 Pete 385 4-Axle, 36" sleeper
GMC C-6500 24" Box Truck with Lift Gate



2- 2006 Volvo VNL64 3-Axle Day Cab
Cummins ISX, Jake, 10 spd, PS, AC, CC, air ride cab...**\$16,500**

DORNGOODDEALS.COM

2008 DODGE RAM 2500, 4WD, Quad Cab, automatic, power windows & locks, tilt, cruise.....**\$13,995**

2008 FORD SUPER DUTY F-350, Ext. Cab, XL, 4X4, Dually, power windows and locks, tilt, cruise, AC, 144k miles.....**\$15,995**

1993 CHEVROLET SUBURBAN 2500 SILVERADO, 4WD, 545 V8, big block, towing package, auto, tilt, cruise, power windows and locks, power mirrors, privacy glass, AC-does not blow cold, 3rd row seating.....**\$2,459**

1999 FORD F-350 DUMP, 7.3, Powerstroke Diesel, ABS, cruise, tilt, tow receiver, intermittent wipers, AC, utility light, side tool box, AM/FM radio, 270K miles.....**\$11,995**

2006 CHEVROLET COLORADO EXT. CAB, 2WD, 5cyl., auto, air, tilt, cruise, 138K miles.....**\$7,995**

2007 CHEVROLET SILVERADO 3500, 4X4, Dually, 6.0 V8, gas, auto, air, 125K miles.....**\$15,495**

2007 CHEVROLET 2500 4X4, Ext. Cab, power windows and locks, remote mirrors, rear defrost, compass, thermostat read out, CD, AM/FM stereo with aux jack for your phone, cloth bucket seats, center console, remote keyless entry, remote start. **\$15,995**

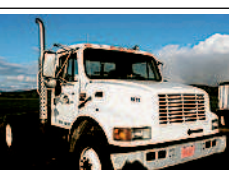
DORN BROS. TRUCK SALES, Inc.
SINCE 1947
VOTED QUALITY DEALER OF THE YEAR.
3130 PORTLAND RD. • SALEM, OR (503) 585-4731
Prices good for 1 week from publication date.

80 Trucks

1973 Red Ford Truck: with seed racks, hoist, 18 foot bed. Halsey, OR. Call 541-974-9701

1985 INTERNATIONAL TRUCK

Good condition. Cummins Big Cam 350, 460,188 miles, Eaton Fuller 9 speed transmission, 24' flatbed, side racks, vegetable/ seed gate, hoist, & tarp. St. Paul, OR. 503-508-3726



1996 INTERNATIONAL 4900 SINGLE AXLE Semi Tractor, DT466, Automatic, Air Start, Good Rubber, 376,000 miles. Good Runner. Harrisburg, OR. 541-905-3137

2000 FREIGHTLINER CENTURY Condo Sleeper, Air ride, 10 speed, Aluminum wheels, 5th wheel slider, 430HP Good running truck, \$7,000. Salem, OR. 503-576-0479

2004 Freight Liner M2: single axle, cab and chassis, \$12,500. Silverton, OR. 503-932-0766



2010 Freightliner Long WB, 264" Series 60 Detroit, 10 Spd, Airride only 506,445 miles, Looks Good runs Good! **\$29,500**



1978 Western Star 2800 Gal. Steel H2O tanker with 5 SPEED AUTO tranny and 290 Cummins w/ jake and Henderickson susp. Has a Cornell pump and front and rear sprayers.....**\$14,500**



(2) 26'-27' Outside rail flatbeds. 69' TRLMO and 71' Comet Both need decks but brakes and rubber are good. **...Your choice \$3000 each**



2006 Volvo S/A Sleeper. D-12 Volvo 465hp, 10 Spd, Airride, AC 218" WB has 3.42 ratio, Good brakes and rubber.....**\$9950** Also have 2 Freightliner S/A Sleepers w/ similar specs!



1996 Western 38' frameless End Dump, Neway springs needs 1 ax brakes, rubber is pretty good, Tub is nice and straight w/ 48" sides, Has top hinge rear gate.....**\$12,950**



1996 Western 38' frameless End Dump, Neway springs needs 1 ax brakes, rubber is pretty good, Tub is nice and straight w/ 48" sides, Has top hinge rear gate.....**\$12,950**

Don't Forget
Call in your classified ad by Wednesday. 10:00...Display (bordered) Ad Noon.....Line Ad
AUCTION DEADLINE Tuesday @ 5 pm
Toll free 1-800-882-6789 Fax (503) 370-4383
www.capitalpress.com

80 Trucks

2004 Freightliner: 3- axle tractor, day cab, Mercedes engine, 10 speed, 470,000 miles, very good shape, \$14,500 OBO. Cornelius, OR. Jeff 503-341-4289

FOR SALE

1979 Freightliner truck. Ran when parked 8 years ago. Now ? As is \$500. Fort Rock, OR. 541-576-3036



New and Used Buses In Inventory! Starting at \$6,500
Brattain International, Albany, OR. 541-928-3324, ext. 2.

Truck Scales: 90' x 10', with printer and read out, \$21,500 OBO. Cornelius, OR. 503-341-4289

100 Truck & Pickup Parts
Wanted: Diesel Engine Cores. R & G Machining and Engine Parts. Mulino, OR. 503-829-6038

130 Tires & Wheels
(3) Pairs 68-50-32: 6 ply on wheels 95%.
(3) pairs 54-31-26: 10 ply turfs on wheels:
67-34-30 10 ply loggers:
66-43-25 Tubes 48-31-20 Tubes. Chowchilla, CA. 209-246-3309

100 Truck & Pickup Parts
100 Truck & Pickup Parts

Tun's DIESEL TRUCK REPAIR & FARM MACHINERY

- TRANSMISSION • REAR ENDS
- ENGINE OVERHAUL
- BRAKE JOBS

New & Used Parts In Stock!

Quality Workmanship at Low Shop Prices
Hubbard, OR 503-981-9151 • Portland 503-224-3466

February 17, 2017

(2) Firestone 30.5L-32 R3 Combine Tires: 50% tread, \$450/ each. Hillsboro, OR. 503-939-3604

(8) 285/75 Traction Tires: on hub piloted wheels, 20% tread, 4 on aluminum, 4 on steel, \$1000. Yamhill, OR. 971-246-3566

30.5-32 Firestone: 23 degree, 12 ply, 30 to 40 percent, \$850 each. Albany, OR. 541-619-4720, 541-401-7725



BIG FLOTATION TIRES:
650/65R38 like new! Over 80% rubber, came off a John Deere 4720 sprayer with disk brakes. Just bought the sprayer, \$13,000 OBO. Caldwell, ID. Call Brennan at 208-989-1952

Flotation Tires: New-Used
42x25x20, 48x25x20
48x31x20, 44x41x20
54x37x25, 67x34x25
66x43x25, 66x44x25
73x44x32, most metric sizes and rims for all of the above. Chowchilla, CA. 209-246-3309

Flotation Turf Tires: 2 Goodyear 54x31-26, 6 ply, 30% tread, \$300 each. Salem, OR. 503-792-3734

ARMY TRUCKS

4x4 & 6x6 COMPLETE PARTS INVENTORY

MEMPHIS EQUIPMENT
901-774-0600 (TN)
www.memphisequipment.com
THE NATION'S LARGEST ARMY TRUCK DEALER

200 Trailers, Misc. 200 Trailers, Misc.
www.trailer-world.com • www.trailer-world.com
Best Trailer...Best Price!

BIG TEX 83"X14' 14K DUMP TRAILER

BIG TEX \$300 INSTANT REBATE

MSRP \$8,872.19 • SALE \$6,899 LESS INSTANT \$300 REBATE
Your Price \$6599
Instant Rebate Offer Good Through March 1, 2017

Includes Anti-Sail Heavy Duty Truck Style Roll Tarps Installed



HEAVIEST DUTY SIDEWALL DESIGN
• With 3-way gate. • 7' slide-in ramps
• Stake pockets • Tie down bar
• Scissor lift • Sealed truck style LED lights

TRAILER WORLD
A Division of TRAILER SALES
Covering Western & Eastern Oregon, Washington & Idaho
Woodburn, OR: 503-981-8777 Bend (Tumalo), OR: 541-389-9849 Ontario, OR: 541-889-4310
www.trailer-world.com • www.trailer-world.com

Cash pricing shown. Financing available O.A.C.
John 3:16

80 Trucks 80 Trucks

POWER

YOUR REGIONAL COMMERCIAL DEALER FOR NEW AND USED

We have New and Pre-Owned Commercial Vehicles
Contact us today to see what we have waiting for you!