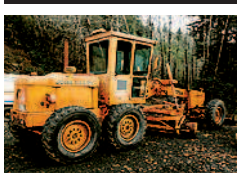


1470 Heavy & Indust. Equip.



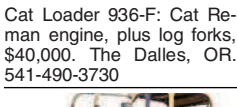
1982 John Deere Motor Grader 570: Reman motor with approximately 500 hours, front blade. Used by State of Oregon, \$25,000. Coos Bay, OR. 541-294-6673



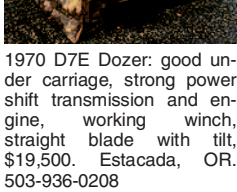
Commercial Blizzard Snow Plow: New and used. For pick up trucks and tractors. Southern, Oregon 541-892-2814



1997 JCB Backhoe: 4WD, 4500 hours, extendahoe with extra bucket, quick connect, 4-1 loader bucket on front. Used by Oregon Water Board, \$26,000. Coos Bay, OR. 541-294-6673



Cat Loader 936-F: Cat Reman engine, plus log forks, \$40,000. The Dalles, OR. 541-490-3730



1970 D7E Dozer: good under carriage, strong power shift transmission and engine, working winch, straight blade with tilt, \$19,500. Estacada, OR. 503-936-0208

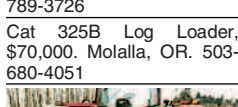


2001 HITACHI 120-5 EXCAVATOR
6,400 hours, 90% undercarriage, manuals, spare parts. Excavator only, \$35,900. Trailer and 17' bucket also available. Christmas Valley, OR. 541-297-1451

1470 Heavy & Indust. Equip.



Columbia 8 to 10 yard dump box, heavy duty logger with hydraulics, very nice condition, \$8500 OBO. Sandy, OR. 503-668-6808



Oliver OC46 3/4 Yard Crawler Front End Loader: recent major repairs, new paint, good under carriage. Ideal for snow removal \$3,500. Silverton, OR. Bob Qualey 503-551-6048



Side Dumper 3 Axle: one owner, low hours, \$35,000. The Dalles, OR. 541-490-3730



Terex Telehandler TX51/19M: 5000 pound, 19' reach, large tires for size. Eagle Creek, OR. 503-793-1138



Cat 325B Log Loader, \$70,000. Molalla, OR. 503-680-4051



STUMP GRINDER
2008 Fecon RF800 Root Hog. Low Hours. 79"x315" Rotor-belt drive, Single Tipped Carbide Teeth, 3 point Linkage-PTO drive, Trap door, compaction roller, 27.5" belt drive with extra belts and teeth, \$49,995. Monmouth, OR. 503-910-0235



Cat Loader 936-F: Cat Reman engine, plus log forks, \$40,000. The Dalles, OR. 541-490-3730



2001 HITACHI 120-5 EXCAVATOR
6,400 hours, 90% undercarriage, manuals, spare parts. Excavator only, \$35,900. Trailer and 17' bucket also available. Christmas Valley, OR. 541-297-1451

1470 Heavy & Indust. Equip.

Columbia 8 to 10 yard dump box, heavy duty logger with hydraulics, very nice condition, \$8500 OBO. Sandy, OR. 503-668-6808

Oliver OC46 3/4 Yard Crawler Front End Loader: recent major repairs, new paint, good under carriage. Ideal for snow removal \$3,500. Silverton, OR. Bob Qualey 503-551-6048

Side Dumper 3 Axle: one owner, low hours, \$35,000. The Dalles, OR. 541-490-3730

Terex Telehandler TX51/19M: 5000 pound, 19' reach, large tires for size. Eagle Creek, OR. 503-793-1138

Cat 325B Log Loader, \$70,000. Molalla, OR. 503-680-4051

STUMP GRINDER
2008 Fecon RF800 Root Hog. Low Hours. 79"x315" Rotor-belt drive, Single Tipped Carbide Teeth, 3 point Linkage-PTO drive, Trap door, compaction roller, 27.5" belt drive with extra belts and teeth, \$49,995. Monmouth, OR. 503-910-0235

Cat Loader 936-F: Cat Reman engine, plus log forks, \$40,000. The Dalles, OR. 541-490-3730

2001 HITACHI 120-5 EXCAVATOR
6,400 hours, 90% undercarriage, manuals, spare parts. Excavator only, \$35,900. Trailer and 17' bucket also available. Christmas Valley, OR. 541-297-1451

1470 Heavy & Indust. Equip.

TRUCK SCALE
70' x 10' Steel deck above ground truck scale. Canby, OR. 503-803-1926

Units 617 5/8 Yard Crawler Drag Line Clamshell Crane: powered by 371 Detroit diesel \$3,500. Silverton, OR. Bob Qualey 503-551-6048

CASE INDUSTRIAL PARTS
We sell genuine, after market, and used CASE parts at discount prices nationwide. Call For Free Catalog.

CENTRAL EQUIPMENT
AFTER MARKET & USED PARTS
Medford, OR
(888) 593-8749

1480 Farm Equipment Parts
(2) 110 Gallon Polly Saddle Tanks: 29" wide x 30" tall x 41" long. Includes tractor mounting bracket \$150. Tumer OR. 503-769-6517

Discount Tractor Parts: new, used, rebuilt, local warehouses. Garfield, WA. Call 800-967-8185 www.drapetractor.com

4690 Hesston In Line Baler: 14" chamber, 1517 hours, excellent condition \$30,000. 1095 Bale Wagon, 3300 hours, good rubber \$62,000. Fort Jones, CA. 530-598-5082

Alfalfa, 3x4, \$140/ ton. Orchardgrass, 2-String, \$174/ ton. Hesston 4600 Baler \$6,900. Culver, OR. 509-250-2846.

Alfalfa, 3x4, \$140/ ton. Orchardgrass, 2-String, \$174/ ton. Hesston 4600 Baler \$6,900. Culver, OR. 509-250-2846.

Bale Wagon: New Holland H9880, 2009, 765 hours. Small and big bale, Mil-Stak, excellent condition. Southern, Oregon. 541-892-2814

Freeman 7000 Bale Stacker: Stacks 2 and 3 tie bales. Fully automated block stacker, pull type \$12,000. Amity, OR. 503-435-7504

Large Supply of Rebuilt New Holland Bale Wagons: Also buying New Holland bale wagons. Sod Busters Sales, Polson, MT. 406-883-2118

Late Model New Holland 1095 with 1032 Mil-Stak Bale Clamp. \$90,000 or \$65,000 without Mil-Stak. Sod Busters Sales, Polson, MT. 877-735-2108, 406-883-2118

New And Used Parts: for all models New Holland bale wagons. Largest inventory in North America. Sod Busters Sales, Polson, MT. 877-735-2108 or 406-883-2118

Wanted: Tow behind hay tedder with 4 rotors. Gresham, OR. Tim 503-719-2545

www.jonspipeandsupply.com has Monster Hay Feeders: designed for big bales, saves 30 percent of hay, pays for itself first year. 10 year warranty. Call Jon 530-949-2285

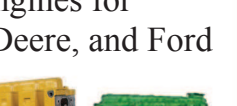
1540 Orchard, Vineyard Equip.
Flory Sweepers: Cab and open station, starting at \$21,000. Silverton, OR 503-932-0766

1-800-882-6789
Capital Press
www.capitalpress.com

1480 Farm Equipment Parts
Nampa Tractor Parts
(208) 467-4430
Nampa, ID

NEW, USED, AND REMAN PARTS
TOLL FREE: 1-877-928-1646
32427 OLD HWY 34, TANGENT, OR 97389

Reman Engines for Case/IH, John Deere, and Ford



JD 4010, 4020 Clutch Kits \$175



SALVAGED TRACTORS
Seats w/Air Suspension \$1,025

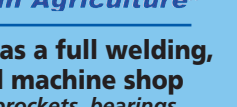


Farmland Tractor Supply
Parts@Farmlandtractor.com

D & L Chain, Inc.
"Specializing in Agriculture"

D & L Chain, Inc has a full welding, fabrication and machine shop
We carry chains, sprockets, bearings, pulleys, and much more.

Our shop can repair or replace live bottom chains & sprockets



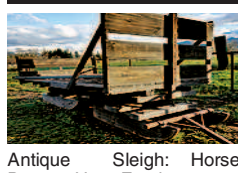
24HR EMERGENCY SERVICE
CALL US FOR QUOTES OR TO ORDER PARTS!

MADE IN THE USA

dlchain.com
503-769-7992 | 800-772-7992
Fax 503-769-4092

11022 Rainwater Ln. SE, Aumsville, OR 97325

1490 Antique Farm Eq. & Parts



Antique Sleigh: Horse Drawn Hay Feeder, great condition, \$2,500. Grants Pass, OR. Call Mike 541-660-4481

1520 Hay Equipment
#1 Balewagons: Buy, Sell, New Holland 2&3 wide self-propelled, pull-type models, parts, tires, manuals. Caldwell, ID. 208-880-2889 www.balewagon.com

2 New Holland BB900 Balers: 1261 hours and 1360 hours, 15" chamber, good condition and field ready, \$16,500 OBO each. New Holland 1095 balewagon, 5061 hours, good condition and field ready \$46,500 OBO. Corning, CA. 530-774-4794, 530-680-4218

4690 Hesston In Line Baler: 14" chamber, 1517 hours, excellent condition \$30,000. 1095 Bale Wagon, 3300 hours, good rubber \$62,000. Fort Jones, CA. 530-598-5082

Alfalfa, 3x4, \$140/ ton. Orchardgrass, 2-String, \$174/ ton. Hesston 4600 Baler \$6,900. Culver, OR. 509-250-2846.

Alfalfa, 3x4, \$140/ ton. Orchardgrass, 2-String, \$174/ ton. Hesston 4600 Baler \$6,900. Culver, OR. 509-250-2846.

Bale Wagon: New Holland H9880, 2009, 765 hours. Small and big bale, Mil-Stak, excellent condition. Southern, Oregon. 541-892-2814

Freeman 7000 Bale Stacker: Stacks 2 and 3 tie bales. Fully automated block stacker, pull type \$12,000. Amity, OR. 503-435-7504

Large Supply of Rebuilt New Holland Bale Wagons: Also buying New Holland bale wagons. Sod Busters Sales, Polson, MT. 406-883-2118

Late Model New Holland 1095 with 1032 Mil-Stak Bale Clamp. \$90,000 or \$65,000 without Mil-Stak. Sod Busters Sales, Polson, MT. 877-735-2108, 406-883-2118

New And Used Parts: for all models New Holland bale wagons. Largest inventory in North America. Sod Busters Sales, Polson, MT. 877-735-2108 or 406-883-2118

Wanted: Tow behind hay tedder with 4 rotors. Gresham, OR. Tim 503-719-2545

www.jonspipeandsupply.com has Monster Hay Feeders: designed for big bales, saves 30 percent of hay, pays for itself first year. 10 year warranty. Call Jon 530-949-2285

1540 Orchard, Vineyard Equip.
Flory Sweepers: Cab and open station, starting at \$21,000. Silverton, OR 503-932-0766

1-800-882-6789
Capital Press
www.capitalpress.com

1480 Farm Equipment Parts
Nampa Tractor Parts
(208) 467-4430
Nampa, ID

NEW & USED OLIVER & CLETRAC
Crawler Parts Our Specialty
ZIMMERMAN OLIVER-CLETRAC
1450 Diamond Station Rd. • Ephrata, PA 17522
717-738-2573
Fax 717-733-3529
www.olivercletrac.com

ASSOCIATED TRACTOR SERVICE INC.
NEW • USED • REBUILT PARTS
PARTS • SERVICE • EQUIPMENT
Satisfaction Guaranteed Since 1954
PARTS ★ SERVICE ★ EQUIPMENT

Used National Locator Services
BEGE Hydraulic Pumps & Parts

CALL NOW & CHECK OUT OUR INVENTORY

(800) 735-1301 • (209) 466-3003
1323 W. Charter Way, Stockton, CA 95206-1110

1560 Tractors
1560 Tractors



Model 4020R
SERIES
3120R 4020R
3520R 4525R
3510H 4720H
6640 8050

24 - 80 hp., 4 wheel drive
Compact Synchro-Shuttle
Hydro 24, 28, 35, 47 hp

THE TRACTOR STORE
(541) 342-5464
5450 W. 11th, Eugene, OR

1540 Orchard, Vineyard Equip.

JD 40 Weiss Sweeper: Excellent Condition \$25,000 OBO Carlton, OR 503-209-4086

(21) Orchard Ladders: Aluminum, 8', 12', 14', and 16'. Newberg, OR. 503-538-2688

Terex Telehandler TX51/19M: 5000 pound, 19' reach, large tires for size. Eagle Creek, OR. 503-793-1138

Weiss McNair JD50 3 Wheel Drive Sweeper: 740 hours, 2 years on new motor, \$30,000. 541-892-2814

CAPITAL PRESS CLASSIFIEDS
GET RESULTS!

RCO Baits
Gophers • Squirrels
Voies-Moles
Dealer Locator
1-800-214-2248
Harrisburg, OR

Looking for ORCHARD/VINEYARD PROPERTY?
Go to Class. 387
Capital Press
www.capitalpress.com
1540-1-52-4#13

1560 Tractors
#1 Massey Ferguson Tractors: Oregon City, OR. 503-631-3411

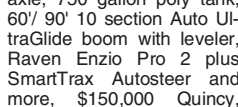


2013 Apache AS720 Sprayer: 440 hours on 160HP Tier 3 Cummins, 120" - 160", hydraulic adjust axle, 750 gallon poly tank, 60' 90" 10 section Auto UltraGlide boom with leveler, Raven Enzo Pro 2 plus SmartTrax Autosteer and more, \$150,000 Quincy, WA. 509-398-1280

Attention: Wanted Kubota or John Deere, 4x4 compact tractor with loader/ equipment. Carlton, OR. 503-550-0094



International 1086 6681 hours. Duals, near new rubber, new interior. Good torque amplifier. Sharp tractor, \$15,750. North Spokane, WA. 509-994-9520



International 5288: nice and clean with 5974 hours, DT466 engine, duals, new interior. Good running tractor, North Spokane, WA. 509-994-9520

1560 Tractors
1560 Tractors



24 Horsepower Diesel Engine
1060 lb. Front Loader Full Height Lift Capacity
87.6" Loader Lift Height at Pivot Pin
Hydrostatic Steering • Dual Hydraulic Pumps
Cast Iron Rear End and Transmission Housing
Two-Speed Rear PTO • Differential Lock
Four Year Drive Train Warranty
Available Backhoe in stock

TRAILER WORLD
A Division of
551 SE 13th St, Ontario, OR 97914
(541) 889-4310 • www.trailer-world.com
www.trailer-world.com • www.trailer-world.com

1600 Farm Equipment
1600 Farm Equipment

Farm Equipment for SALE
Summers Harrow, 74 ft. Herman Spring Harrow.....\$15,000
John Deere 330 Disc, 30 ft.....\$7,000
1973 Kenworth w/22' bed.....\$5,500
International Springtooth Vibra-Shank, 55 ft.....\$4,500
Calkins Springtooth, 36 ft.....\$3,500
John Deere 800, 50 ft. Rodweeder.....\$3,000
Coil Tine Harrow, 250 per section
Hay Grapple.....\$2,250
John Deere 222 Header.....\$750

Milton-Freewater, Oregon
509-386-4876

Containers For Sale
• 20' and 40'
REFRIGERATED CONTAINERS AVAILABLE



Portland Container
9449 N. BURGARD WY., PORTLAND OR 97203
In Portland, call Mike at (503) 546-2914
Outside Portland: 1-800-788-5159
pccanman@msn.com

The West's BEST Ag News!
#1
newspaper
facebook
twitter
blog
web
www.capitalpress.com

Quality Used EQUIPMENT & ATTACHMENTS
• INDUSTRIAL
• COMMERCIAL
Please visit our Website www.amtractor.com for a complete list of Machines and Attachments
American Tractor
Our Toll Free # 888-499-8980
Call Cameron Noble or Eric Hunt Central Point, OR 2-21#5

503-668-5024
503-407-9062
"We Buy Equipment"
HEAVY & INDUSTRIAL EQUIPMENT
Hitachi ZX 120 Thumb, 3 buckets, hydraulic quick change, AC, 8500 hrs. \$42,500
Dresser TD9H 6pway ripper, sweeps, 2900 hrs. \$27,500
1975 Cat 950 Wheel loader, enclosed cab. \$13,950
Ingersoll Rand VR843 Reach Forklift Enclosed cab, 4x4x4, quick change. \$19,500
1998 John Deere 210LESkiploader 4x4 box scrapper w/ ripper. \$18,500
2005 John Deere CLC Hydraulic thumb Quick change, 9500 hrs, wired for lazer, very nice condition. \$42,500
Hitachi EX 120-5 Quick-Change Thumb. \$24,950
1995 Tucker Snow Cat 5.9 Cummins, automatic, 6-way blade, Idaho Northern groomer and packer. \$29,500
CAT EL 200 Excavator Quick-Change Thumb. \$24,500
Komatsu 150-5 Thumb, 2 buckets, pilot control. \$24,500
buzzardsequipment.net 2-1#8

3 BULLS EYE MARKETING STRATEGIES...
Capital Press SUBSCRIPTION
Capital Press NEWSPAPER ADS
Capital Press ONLINE ADS
We reach over 108,500 print and online readers each week!
Make sure they see your business information.
Capital Press The West's Ag Weekly
DEADLINES:
Classified Display Ads, Weds. @ 10AM
Classified Line Ads Weds. @ Noon.
1-800-882-6789
Fax 503-370-4383
www.capitalpress.com

Always Best Service guaranteed.
Best Pricing in the Northwest!
• Always lowest prices guaranteed. •

1600 Farm Equipment
1600 Farm Equipment

1600 Farm Equipment
1600 Farm Equipment

1600 Farm Equipment
1600 Farm Equipment

1600 Farm Equipment
1600 Farm Equipment

1600 Farm Equipment
1600 Farm Equipment

1600 Farm Equipment
1600 Farm Equipment

1600 Farm Equipment
1600 Farm Equipment

1600 Farm Equipment
1600 Farm Equipment

1600 Farm Equipment
1600 Farm Equipment

1600 Farm Equipment
1600 Farm Equipment

1600 Farm Equipment
1600 Farm Equipment

1600 Farm Equipment
1600 Farm Equipment

1600 Farm Equipment
1600 Farm Equipment

1600 Farm Equipment
1600 Farm Equipment

1600 Farm Equipment
1600 Farm Equipment

1600 Farm Equipment
1600 Farm Equipment

1600 Farm Equipment
1600 Farm Equipment

1600 Farm Equipment
1600 Farm Equipment

1600 Farm Equipment
1600 Farm Equipment

1600 Farm Equipment
1600 Farm Equipment

1600 Farm Equipment
1600 Farm Equipment

1600 Farm Equipment
1600 Farm Equipment

1600 Farm Equipment
1600 Farm Equipment

1600 Farm Equipment
1600 Farm Equipment

1600 Farm Equipment
1600 Farm Equipment

1600 Farm Equipment
1600 Farm Equipment

1600 Farm Equipment
1600 Farm Equipment

1600 Farm Equipment
1600 Farm Equipment

1600 Farm Equipment
1600 Farm Equipment

1600 Farm Equipment
1600 Farm Equipment

1600 Farm Equipment
1600 Farm Equipment

</