

1520 Hay Equipment

#1 Bale Wagons: Buy, Sell, New Holland 2&3 wide self-propelled, pull-type models, parts, tires. Caldwell, ID. 208-880-2889
www.balewagon.com

4690 Hesston In Line Baler: 14' chamber, 1517 hours, excellent condition \$30,000. 1095 Bale Wagon, 3300 hours, good rubber \$62,000. Fort Jones, CA. 530-598-5082

Alfalfa, 3x4, \$140/ton. Orchardgrass, 2-String, \$6/bale. Hesston 4600 Baler \$6,500. 1030 Harrowbed, \$3,900. Culver, OR. 509-250-2846.



Bale Wagon: New Holland H9880, 2009, 765 hours. Small and big bale, Mil-Stak, excellent condition. Southern, Oregon. 541-892-2814

WANTED
Baler for 65 lb. bales. Nice running condition. Washougal, WA. 360-904-3334

Freeman 7000 Bale Stacker: Stacks 2 and 3 tie bales. Fully automated block stacker, pull type \$12,000. Amity, OR. 503-435-7504

Late Model New Holland 1095 with 1032 Mil-Stak Bale Clamp. \$90,000 or \$65,000 without Mil-Stak. Sod Busters Sales, Polson, MT. 877-735-2108, 406-883-2118

New And Used Parts: for all models New Holland bale wagons. Largest inventory in North America. Sod Busters Sales, Polson, MT. 877-735-2108 or 406-883-2118

IT'S A SMALL WORLD FOLKS!
A student in Vancouver, BC bought my Leyland 272 tractor to ship to his dad in South Africa! His dad already had one and wanted another, so he purchased the one I listed in Capital Press.
Tony Windermere
Nut Grove
Chilliwack, BC

Capital Press Classified Advertising
1-800-882-6789
Fax (503) 370-4383
www.capitalpress.com

1520 Hay Equipment

Large Supply of Rebuilt New Holland Bale Wagons: Also buying New Holland bale wagons. Sod Busters Sales, Polson, MT. 406-883-2118

www.jonspipe&supply.com has Monster Hay Feeders: designed for big bales, saves 30 percent of hay, pays for itself first year. 10 year warranty. Call Jon 530-949-2285

RCO Baits
Gophers • Squirrels
Voles-Moles
Dealer Locator
1-800-214-2248
Harrisburg, OR

1540 Orchard, Vineyard Equip.

(21) Orchard Ladders: Aluminum, 8', 12', 14', and 16'. Newberg, OR. 503-538-2688

Flory Sweepers: Cab and open station, starting at \$21,000. Silverton, OR 503-932-0766

JD 40 Weiss Sweeper: Excellent Condition \$25,000 OBO Carlton, OR 503-209-4086

JOHN DEERE 5101EN, VALLEY GRAPE BINS: 2014, 60' wide, front 3-point, with PTO, 284 hours, 5,000 hour warranty, 2015 Stainless steel 7x12 valley bins. 2014 4' rears flail rear or front mount. Vineyard bird netting. Dayton, OR. Robert 503-560-4238

Terex Telehandler TX51/19M: 5000 pound, 19' reach, large tires for size. Eagle Creek, OR. 503-793-1138

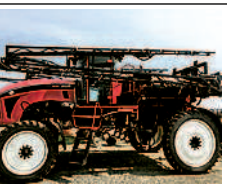
Weiss McNair JD50 3 Wheel Drive Sweeper: 740 hours, 2 years on new motor, \$30,000. 541-892-2814

Looking for ORCHARD/ VINEYARD PROPERTY?
Go to Class. 387
Capital Press
www.capitalpress.com
1540-1-52-4/#13

TALLMAN LADDERS
Crafted for Safety, Longevity, Stability and Affordability!
Quality Made in the U.S.A. Since 1954
tallmanladders.com
(541) 386-2733
(800) 354-2733

1560 Tractors

#1 Massey Ferguson Tractors: Oregon City, OR. 503-631-3411
1969 John Deere 4520: Best offer. McMinnville, OR. 503-435-9437



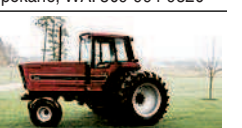
2013 Apache AS720 Sprayer: 440 hours on 160HP Tier 3 Cummins, 120" 160", hydraulic adjust axle, 750 gallon poly tank, 60/90' 10 section Ultra-Glide boom with leveler, Raven Enzo Pro 2 plus SmartTrax Autosteer and more, \$150,000 Quincy, WA. 509-398-1280

Attention: Wanted Kubota or John Deere, 4x4 compact tractor with loader/ equipment. Carlton, OR. 503-550-0094

Ford Tractor Model 600: Gas engine, new rear tires, \$2,800. Ocean Shores, WA. 360-289-3963



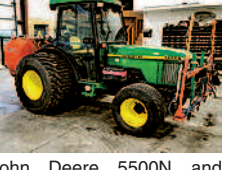
International 1086 6681 hours. Duals, near new rubber, new interior. Good torque amplifier. Sharp tractor, \$15,750. North Spokane, WA. 509-994-9520



International 5288: nice and clean with 5974 hours, DT466 engine, duals, new interior. Good running tractor, North Spokane, WA. 509-994-9520

IT'S A BEAUTY
Case Steiger STX 385HD: heavy axles, PTO, 3 point, Firestones 620/70R42, category 3 and 4, GPS ready, performance package, also have laser controls, 1331 hours, excellent condition. We've retired, \$155,000 OBO. Escalon, CA. 209-838-3122

John Deere 4430: new tires, original 6400 hours, excellent shape \$16,500 OBO. Sheridan, OR. 503-434-7692



John Deere 5500N and Rears Pak Tank Sprayer: 5 valve 16' boom, front or rear mount. Raven spray monitor with flow control, \$24,500. Aumsville, OR. 503-991-0248



John Deere 7215R: power quad transmission, comes with duals, MFWD, nice tractor, 1791 hours, power train warranty up to 5000 hours or July 2018, \$160,000. Arbutle, CA. 530-681-5087



New Holland 7060T Tractor: 200 hp 4wd/ cab. Brand new 860TL loader. Duals, excellent condition, 5000 hours. N.W. Oregon. \$83,500, 503-812-6844. Must leave message

QUALITY EQUIPMENT SERVICE
North Fork Tractor and Equipment offers quality maintenance and repair of Agricultural, Industrial, and Heavy Equipment. Fully equipped Field Service Truck, Fleet Service Programs, Hydraulics Services, Welding and Steel Fabrication. Specializing in keeping your older reliables running. 27 years experience. Yamhill, OR. Contact John (503)341-7116 northfork@onlinenw.com

Jump Start Your Ads By Placing Online!

"I had calls from New York, Minnesota, Idaho and Texas before the paper came out Friday! People are obviously using your website!"
Mickelsen Dairy, Inc.
Winlock, WA

Classified ads placed online go straight to the website! (on approval)

Don't wait! Place your ad right now!
Capital Press
800-882-6789
www.capitalpress.com

Zetor TRACTORS
6421/6441, 7421/7441, 8421/8441
• 67-90 HP •
THE TRACTOR STORE
(541) 342-5464
5450 W. 11th, Eugene, OR

1560 Tractors

John Deere 8850 Tractor: 350 HP, 2000 hours on rebuilt engine, tires 60%, excellent shape \$16,500 OBO. Sheridan, OR. 503-434-7692

WANTED: CASE IH TRACTOR
125 to 150 horsepower; 4-wheel drive with loader and grapple; less than 4500 hours. Contact Jim at 541-993-3658.

1600 Farm Equipment
CALKINS CULTIVATOR: 1996, 42", 4 tool bars, 9" spacing, tine harrow, \$8,500. Pomeroy, WA. Luke 509-751-6513

GET 'EM AT FARMLAND NOW!
12' Brown Bear Compost Turner, 3pt PTO driven. Excellent condition.....\$15,000
JD 740 Loader.....\$6,000
JD 6100D Tractor, 4WD, open ROPS.....\$25,000
Freeman 370T Baler, field ready.....\$12,500
Case IH 1010 Header, 30' w/trailer.....\$4,500

Farmland Tractor Supply
Tangent, Oregon
877-928-1646
541-928-1646
32427 Old Hwy. 34
Tangent, OR 97389

TONS OF USED FARM WHEELS
AG WEST TIRE FACTORY
Rickreall & Silverton
503-623-9171 ~ Mike

Diesel Fuel Injection Service
Pumps • Injectors • Turbos
Factory Authorized Bosch - Stanadyne - Denso - Yanmar - Zexel / Kiki - Delphi / CAV
We also service CAT & Cummins
(503) 235-1947
(888) 285-1213
8922 NE Vancouver Way, Portland, OR 97211

Containers For Sale
• 20' and 40'
REFRIGERATED CONTAINERS AVAILABLE
Portland Container
9449 N. BURGARD WY., PORTLAND OR 97203
In Portland, call Mike at (503) 546-2914
Outside Portland: 1-800-788-5159
pccranman@msn.com

MERIDIAN EQUIPMENT
Serving the Pacific Northwest Since 1973

| | |
|---|---|
| Mitsubishi 5470D Tractor w/Loader, 4WD, PTO, 3 Point. \$7,500 | Ford 2110 w/Loader, 4WD, PTO, 3 Point. \$8,995 |
| John Deere 2355 w/Loader, 4WD, PTO, 3-point. \$13,500 | Massey Ferguson 1145 w/Loader, 4WD, PTO, 3-point. \$9,500 |

West Coast's m.e. Miller tire distributor
www.meridianeq.com
360-398-2141 • Bellingham, WA

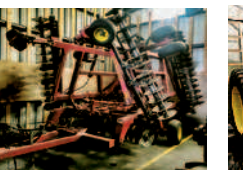
Ask about our rental/purchase program - includes 100 hrs of use per month - free delivery to the Treasure Valley

| | |
|---|--|
| 2 AVAILABLE-2011 JD 6100D 3200 HRS 2WD CAB A/C 100HP POWER REVERSE.....\$29,500 | 2012 JD 6125R MFWD WITH TLS FRONT SUSPENSION, LONG AXELS AUTO TRACK READY 1057 HOURS.....\$67,000 |
| 2012 JD6125R MFWD WITH TLS FRONT SUSPENSION, ALL NEW TIRES AUTO TRACK READY 3900 HOURS.....\$57,000 | 2 AVAILABLE-2014 JD 6150R 3700 HRS TO 4200 HRS LOADER .. READY, IVT AND LOADED COMPREHENSIVE WARRANTY UNTIL OCTOBER 2017.....\$69,500-\$75,000 |
| 2012 JD 7200R 2500 HRS.....\$79,500 | 2012 JD 7200R 4400 HRS IVT DUALS WEIGHTS QUICK HITCH WARRANTY.....\$77,000 |
| 2012 JD 7215R 2400 HRS IVT DUALS WEIGHTS QUICK HITCH.....\$95,000 | 2012 JD 7215R 3200 HRS IVT DUALS WEIGHTS QUICK HITCH.....\$90,000 |
| 2004 JD 7320 10000 HRS POWER-QUAD.....\$35,000 | 2012 JD 7230R 3400 HRS EXTENDED WARRANTY DUALS WEIGHTS QUICK HITCH.....\$89,500 |
| 2004 JD 7820 5500 HRS 20 SPD POWER-QUAD DUALS WEIGHTS QUICK HITCH.....\$55,000 | 2001 JD 8110 7300 HRS COMPLETELY REBUILT WITH 30 SERIES UPDATES POWER-SHIFT.....\$65,000 |
| 2005 JD 8120 ONLY 2900 HRS DUALS WEIGHTS QUICK HITCH.....\$79,500 | 2012 JD 8235R 2200HRS IVT 480/80/50 DUALS WEIGHTS QUICK HITCH.....\$109,000 |
| 2005 JD 8320 8590 HRS AUTO TRACK DUALS WEIGHTS QUICK HITCH.....\$49,500 | 2005 JD 8420 6000 HRS AUTO TRACK DUALS WEIGHTS QUICK HITCH.....\$65,000 |
| 2012 JD 8260R 5100 HOURS DUALS WEIGHTS QUICK HITCH.....\$89,000 | 2011 JD 8360R 754 HOURS LEATHER 31MPH IVT FRONT 3POINT PTO.....\$190,000 |

SPRAYERS
2012 JD 4630 950 HRS 80FT BOOM WIDE STANCE HYDRAULIC TREAD ADJUST, 2630 AND ITC, SECTION CONTROL...\$100,000

Call Chris Ray
(541) 446-3265 • Cell (208) 880-6344
www.ray-brothers.com
Email for more info
CHRISRAY@RAYBROTHERS.NET

1600 Farm Equipment



30' Sunflower Disc: hydraulic leveling, rear hitch \$28,000. Brooks, OR. 503-580-4261

610 JOHN DEERE CHISEL PLOW: 29', Morris tine harrow, twisted shovels & sweeps, good shape, \$7,500. Pomeroy, WA. 509-751-6513

1600 Farm Equipment



89 John Deere 4955: 8654 hours, great shape \$43,500. Krause 5815W offset disk, 28" blades, 15' wide, \$13,500. Blue Jet 5' shank in line ripper \$3,250. John Deere RR2 3pt cultivator with gage wheels \$1,200. Buhler 10' 3pt hydraulic blade \$3,600. Tim 503-719-2545

1600 Farm Equipment



1-800-OK-2-RENT
Rent or Sale
Containers and Trailers
CONTAINERS: 20' & 40'
TRAILERS: 27', 40', 45' & 48'
Western Mobile Storage
1-800-652-7368 • 541-342-1835
Eugene, OR 1600-1-4-4/#5

1600 Farm Equipment



KUHN DISCOVERER XL 60 DISK
Low acres, in Excellent shape!
~~\$37,500~~
\$29,975

CASE-IH 1680 COMBINE
410 engine hours, 1010 header on cart included.
\$18,900

USED AG EQUIPMENT

| | | | | | | | | | | | |
|---|---|---|--|---|---|--|---|---|---|--|--------------------------------------|
| 1983 John Deere 2950, cab tractor, with loader, 540/1000 PTO, 6030 hours.....\$18,900 | 2013 PhiBer V51202 bale accumulator, vertical stack \$27,500 | 2007 John Deere 8530 IVT, ILS suspension, front axle, leather interior, lots of recent work in shop, 7360 hours.....\$119,500 | MacDon Spiral Conditioner for 972 header. Some rust but overall good condition.....\$500 | John Deere 8300 Grain Drill, 7.5" spacing with small seed boxes, clean and straight.....\$3,950 | 2010 John Deere 8245R, 2,400 hours, IVT, row crop rubber. VERY Nice.....\$145,000 \$129,900 | New Holland LM435A Telehandler, 4,230 hours, pallet forks and bucket.....\$52,500 \$48,000 | 2005 AGCO DT220A Tractor, MFWD, duals front and rear, 4 SCV's, CVT transmission, 220 HP, Great Shape!.....\$89,500 \$69,500 | 2012 John Deere 1026R and Loader, with drive over 60" auto connect mower deck, MFWD. One owner and VERY low hours. 109 hours.....\$14,995 | 2008 AGCO 5200-25 Double Draper Header, Came off Massey Ferguson 9635. Priced to Sell!.....\$12,000 | | |
| C005612, Twin Star 2027 Basket Rake.....\$15,000 | 2003 New Holland HW340 Windrower, 16ft rotary header, 1900 hours.....\$29,900 | 2005 MacDon 9352i, with 14' hay header, 1335 hours.....\$42,500 | 1993 MacDon 9000 with 16' hay head, 5,483 hours, 960 draper head also available.....\$12,000 | Case IH 1680 Combine, with 25' 1010 header on cart, 4108 engine hours.....\$18,900 | John Deere 5820 Forage Harvester.....\$39,000 | John Deere 2700 5-bottom Plow..\$2,500 | M12133, 2012 Celli Maxi-450 Power Harrow, 4.5 Meter Celli Power Harrow with hydraulic controlled heavy roller, leveling bar & oil cooler. \$26,900 \$23,500 \$21,500 | Caterpillar D6C Crawler, New cutting edge, manual angle blade, drawbar.....\$16,000 | Used Pasture Harrow - Aggressive Side Never Used, (5) 10' X 8' Sections.....\$650 | Outback BC240211 Billy Goat Brush Cutter, 13 HP Honda engine.....\$1,495 | John Deere 3940 Hay Chopper..\$2,500 |

Tri County Equipment
www.wegg.biz
Enterprise, OR LaGrande, OR Baker City, OR
911 S. River St. 11201 Island Ave 41216 Hwy 30
541.263.0601 541.910.4868 541.910.4868

Chehalem Valley Orchard Equipment
EARLY ORDER DISCOUNT PROGRAM ENDS JAN. 15TH, 2017
Don't miss out on BIG Savings on Flory Harvesters & Sweepers.
NEW 57 SERIES SWEEPER
NEW EQUIPMENT

- Right Way V Scrapers w/wheels & roller, 10'. \$6,900
- 20' Prune-Rite tower.....\$28,000
- 324C Bump Cart, 4 tote w/chain.....Call on Price
- Hy. Pruning Saw with hoses & couplers.....\$1,500

USED EQUIPMENT

- 20' Tree Squirrel Pruning Tower.....\$8,500
- 20' Prune-Rite Tower.....\$14,000
- 20' Prune-Rite Tower, new style, very clean.....\$22,000
- Infco Electrocoup model #F3010, fresh rebuilt with 6'10" extension, safety glove.....\$1,700
- Troybilt Brush Grinder, 8 hp, like new.....\$800
- Vicoam Fertilizer Spreader.....\$400
- Sure Farms cold air drain, frost protection.....Call
- John Deere 613 3pt, 6' rotary mower.....\$900
- Edwards 3pt. Forklift, no side shift.....\$900

Call Gary at (503) 538-7739
www.chehalemvalleyorchardequipment.com
or Come See Us at 24175 Dayton Ave. Newberg, Oregon 97132

Zetor TRACTORS
6421/6441, 7421/7441, 8421/8441
• 67-90 HP •
THE TRACTOR STORE
(541) 342-5464
5450 W. 11th, Eugene, OR

Jump Start Your Ads By Placing Online!

"I had calls from New York, Minnesota, Idaho and Texas before the paper came out Friday! People are obviously using your website!"
Mickelsen Dairy, Inc.
Winlock, WA

Classified ads placed online go straight to the website! (on approval)

Don't wait! Place your ad right now!
Capital Press
800-882-6789
www.capitalpress.com

NORTON'S WELDING
866-628-2497
541-569-2436 • 541-398-2900
Lostine, OR • www.nortonwelding.com

TRACTORS

| | | | | | |
|---|--|----------------------------------|---|--|---|
| 2015 McCormick X7.660 Tractor w/ Loader, 165 Engine HP, 135 PTO HP. Pro Drive Transmission, Creeper Gears, 4WD, Fully Loaded Cab, Rear Fender Controls, Special Financing available.....\$126,000 \$124,000 | 2014 McCormick X60.50 Tractor w/ Loader, 120 Engine HP, 89 PTO HP. LAST TIER 3 - NO EMISSIONS, Xtrashift Transmission, 4WD, Fully loaded Cab, High Performance Hydraulics, NEW.....\$79,000 \$72,000 | Used Ford 8N Tractor.....\$3,895 | Intl. Farmall Tractor w/ F11 Loader, 3pt, Round Bale Fork.....\$5,500 | Branson 3520H with loader.....\$22,895 | Landini Vision 105 Tractor w/ Loader, Cab, 4WD.....CALL |
|---|--|----------------------------------|---|--|---|

INDUSTRIAL LOGGING

| | | |
|---|--|--|
| 1974 Ford Cab and Chassis Tandem Dually w/Hoist.....\$3,500 | Case 550H Crawler, 6 way blade, 1,400 hrs.....\$21,500 | Terex TC48 Excavator Cab, Thumb, 3 buckets, Rubber Tracks.....\$35,500 |
|---|--|--|

HAY EQUIPMENT

| | | | | | |
|---|-------------------------------------|---|-------------------------------------|---|--|
| New Holland Haybine Used 100 Acres.....\$13,995 | New Holland 56 Hay Rake.....\$1,800 | New Holland 1036 Pull type bale wagon.....\$9,500 | New Holland 469 Haybine.....\$1,200 | John Deere 468 Baler Small 2 String Bales.....\$3,500 | Used New Holland BB960 Baler Single xle.....\$24,000 |
|---|-------------------------------------|---|-------------------------------------|---|--|

FARM EQUIPMENT

| | | | |
|------------------------------------|--|---|------------------------------------|
| Harrow Draw Bar 4-12 Foot.....CALL | Used 28' Delta Harrow Cart with 1/2" Harrows.....\$5,500 | 3PT 4X6' 5/8" Harrow with Carrier.....\$550 | Various sizes 1/2" Harrow.....CALL |
|------------------------------------|--|---|------------------------------------|

UTVs

| | | |
|--|--|---|
| 2015 ODES DominatorX, 2 seat, 1000cc, UTV.....\$10,495 | ODES Raider 800cc, 2 seat, 4wd UTV.....\$9,500 | New 2016 800cc ODES Assailant ATV's.....\$7,995 |
|--|--|---|

MISC.

| | | | | | | | | | | | | | | | | | | | | | | | | | | | | | | | | |
|--|--|--|-----------------------------------|--|-----------------------------|---|--|------------------------------------|--------------------------------|---|----------------------------------|----------------------------------|---|---|--------------------------|----------------------------------|--|--|---------------------------|-----------------------------|-----------------------------|--|---|--|-------------------------------|-------------------------------|-------------------------------|---|--|--|--|--------------------------|
| 1983 International Van Truck 9UR.....\$4,000 | 2012 Rankin Arenavator 6' w/ Pipe Roller.....\$1,696 | Back Blade 3pt 8' Tilt and Angle.....\$850 | Back Blade 3pt 7' Angle.....\$425 | Back Blade 3pt and Offset 4'.....\$350 | Back Blade 3pt 7'.....\$380 | Back Blade 3pt General Implement 7'.....\$720 | Back Blade 3pt 6' Angle and Tilt.....\$750 | Back Blade 3pt 5' Offset.....\$350 | Used 6 Ft Back Blade.....\$400 | Agri Ease 8' Angle/Tilt HD Back Blade.....\$745 | General 6' Box Scraper.....\$879 | Forks Rankin 3pt Mount.....\$360 | 2011 Hydro. 3pt Blade Farm King.....\$4,650 | Howe 3 pt Scoop Bucket Good Condition.....\$180 | USS Bale Spear.....\$845 | New 18" Backhoe Bucket.....\$450 | Used Case 12" Backhoe Bucket.....\$750 | Used Agri Ease ATV Flail Mower.....\$2,300 | 4' Rotary Mower.....\$950 | 5' Rotary Mower.....\$1,195 | 6' Rotary Mower.....\$1,399 | 3400 lb. Pallet Fork skid steer mount.....CALL FOR PRICE | Quick Mount Skid Steer Plates (2).....\$165 | Used 3pt Cat-2 Backhoe Attachment w/ 2 Buckets.....\$3,500 | New 24"X20' Culvert.....\$450 | New 36"X22' Culvert.....\$630 | New 18"X20' Culvert.....\$360 | New 12" Auger w/Gearhead 3pt Attachment.....\$1,355 | C&B Flatbeds, Dually NEW w/LED Light Kit.....\$2,425 | C&B Flatbeds, Single, Long & Short Box w/LED.....\$2,295 | New RTC70 Rototiller, 3pt, PTO.....\$2,455 | DR 3pt Chipper.....\$850 |
|--|--|--|-----------------------------------|--|-----------------------------|---|--|------------------------------------|--------------------------------|---|----------------------------------|----------------------------------|---|---|--------------------------|----------------------------------|--|--|---------------------------|-----------------------------|-----------------------------|--|---|--|-------------------------------|-------------------------------|-------------------------------|---|--|--|--|--------------------------|