

1320 Tanks & Storage

5,000 GALLON FUEL TRAILER... Stainless steel two compartment tank with storage boxes on each side.

1330 Generators



GENERATORS: Low hour takeouts, 20kW to 2000kW, diesel, propane, & natural gas.

1380 Irrigation Equipment

(7) 1/4 mile Farmland Wheel Lines: 76" wheels x 4" aluminum pipe...

1380 Irrigation Equipment



84,000' of Drip Tape: .26 gph emitters every 36", \$4,000.

Irrigation and Farm Sale: Some tools and equipment. A lot of irrigation equipment.

A picture says a 1,000 words



Add a full color photo to your print and online ad today by calling 800-882-6789

Your Leading Source for Irrigation Supplies

hps Pipe & Supply. Drip Irrigation • Filtration • Design. 598 Baseline, Cornelius, OR 97113. www.hpspipe.com

WATER MASTER SERIES & EVERGREEN. SUPERIOR SERVICE & DESIGN. All your needs for irrigation parts service.

VALLEY WORKMAN. Truck Equipment. Full Service, Alterations, Dump bodies • Hoists, Farmbeds • Flatbeds. VALLEY FAB CORP. 10910 Portland Rd. NE • Brooks, OR

1390 Packing, Processing Eq.

MARKET SUPPLY & DISTRIBUTION, INC. World Class Berry & Produce Packaging Solutions. Degradable Bags, Flats, Wax Boxes, Clamshells, etc.

1380 Irrigation Equipment

END OF SEASON SPECIALS! Winterize and Repair your equipment now so it's ready to work for you next season! ERNST IRRIGATION. TRAVELER SERVICE*, PANEL INSPECTIONS*, VFD SERVICE*, 10% OFF PARTS & LABOR, PUMP SERVICE*.

1380 Irrigation Equipment

8 Tower Valley Circle: with drops and end gun, dismantled, \$10,500.

Pivots: Good, various lengths, all brands & late models. No rust. Plus some pivot parts, and buried wire.



REINKE LINEAR: 1990 cable tow linear with 5-156', 3-175' spans, 660' of 5" hose and full set of Nelson rotators with drops.

WANTED 3" HANDLINES: Looking for 3" handlines. Also looking for 4", 5", or 6" mainline.

Wanted: used vertical hollow shaft motors. Will pay cash if halfway decent.

WHEEL LINES: Wade Rain wheel lines, \$4000 per line.

IRRIGATION EQUIPMENT BOUGHT. SOLD. RENTAL. New & Used Parts. Aluminum Pipe, Certa-lok, Siphon Tubes • HDPE, Sand Media Filters, Wheel Lines • Pumps.

Stockton Dixon • Turlock Office: (209) 460-0450. Fax: (209) 982-1832. www.pacsouthwestir.com

1410 Logging Equipment



Fecon 14" Clipper Head: fits skid steer. Lone, OR. 541-422-7257.

Older Machinery: Chippers, Vans, debarker, new rock blade.



STUMP GRINDER 2008 Fecon RF800 Root Hog. Low Hours. 79"x315" Rotor-belt drive.

1440 Sawmill Equipment CASH FOR SAWMILLS: We buy Wood-Mizer, Mobile Dimension, Mighty Mite, and more.

3855 W. Winnemucca Blvd, Winnemucca, NV. 89445 Call Ralph at Peck Electric, 775-623-3023.

BOLD EQUALS SOLD!

Next time you place a classified line ad in Capital Press, ask about BOLD-ing!

Make sure readers notice your information by BOLD-ing the header, specific items, and the phone number.

For just \$2 more per ad per week, this feature can pay for itself in responses.

Capital Press The West's Ag Weekly. DEADLINES: Classified Display Ads, Weds. @ 10AM. Classified Line Ads Weds. @ Noon. 1-800-882-6789

1450 Forklifts

Used Lift Trucks. Also New & Used Parts. All sizes, makes & prices. LIFT TRUCK SERVICE 888-890-1450

1470 Heavy & Indust. Equip.

Cat Loader 936-F: Cat Reman engine, plus log forks, \$40,000.

1380 Irrigation Equipment

1470 Heavy & Indust. Equip.

New 8' Brush Rakes: with mounting brackets, \$1,050 each.

503-668-5024 503-407-9062 "We Buy Equipment" HEAVY & INDUSTRIAL EQUIPMENT



Hitachi ZX 120 Thumb, 3 buckets, hydraulic quick change, AC, 8500 hrs. \$42,500



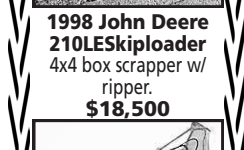
Dresser TD9H 6pw ripper, sweeps, 2900 hrs. \$27,500



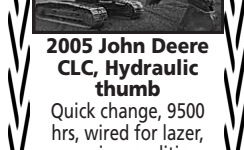
1975 Cat 950 Wheel loader, enclosed cab. \$13,950



Ingersoll Rand VR843 Reach Forklift Enclosed cab, 4x4x4, quick change. \$19,500



1998 John Deere 210LESkip loader 4x4 box scrapper w/ ripper. \$18,500



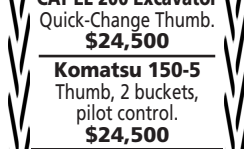
2005 John Deere CLC Hydraulic thumb Quick change, 9500 hrs, wired for laser, very nice condition. \$42,500



Hitachi EX 120-5 Quick-Change Thumb. \$24,950



1995 Tucker Snow Cat 5.9 Cummins, automatic, 6-way blade, Idaho Northern groomer and packer. \$29,500



CAT EL 200 Excavator Quick-Change Thumb. \$24,500



Komatsu 150-5 Thumb, 2 buckets, pilot control. \$24,500

1470 Heavy & Indust. Equip.



RIVERBROOK FARM • HAULING SERVICE. WE HAUL! Building Supplies • Farm Equipment • Construction Equipment • Heavy Equipment • Granular Fertilizer • Grain/Wheat. 888-393-1819

NW Diesel Engine, & Cylinder Head Supply & Machine Shop

Table with columns: NOW AVAILABLE: Gas & Diesel Lift Truck Engines (MAZDA, NISSAN, MITSUBISHI, TOYOTA) and REBUILT DIESEL L/B ENGINES (CAT, GM-DETROIT, DODGE CUMMINS, JOHN DEERE, ISUZU, FORD, NAVISTAR).

Call on other gas engines for auto availability. All Engine & Cylinder heads exchange must be re-buildable core.

PROBLEM WITH YOUR DIESEL NOT RUNNING WELL? NOT RUNNING AT ALL? GIVE US A CALL...WE CAN FIX IT!

R & G MACHINING AND ENGINE PARTS COMPLETE DIESEL MACHINE SHOP AND TRUCK REPAIR. WE WORK ON TRUCKS, TRACTORS, LOADERS, & MOTORHOMES.

1470 Heavy & Indust. Equip.

Side Dumper 3 Axle: one owner, low hours, \$35,000. The Dalles, OR. 541-490-3730

Terex Telehandler TX5119M: 5000 pound, 19' reach, large tires for size.

TRUCK SCALE 70' x 10' Steel deck above ground truck scale.

2011 John Deere 710J Loader Backhoe: 4x4, hydraulic thumb, enclosed cab, extendahoe, 6000 hours, solid tires, \$47,500.



60' Boom Man Lift: Model Snorkel TB60, diesel, 4x4, 5537 hours. Works good, \$12,500.

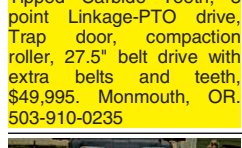
Oliver OC46 3/4 Yard Crawler Front End Loader: recent major repairs, new paint, good under carriage.



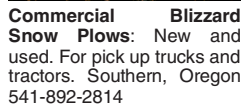
1970 D7E Dozer: good under carriage, strong power shift transmission and engine, working window, straight blade with tilt.



STUMP GRINDER 2008 Fecon RF800 Root Hog. Low Hours. 79"x315" Rotor-belt drive.



Commercial Blizzard Snow Plows: New and used. For pick up trucks and tractors.



ATI Machinery, Inc. 1-888-461-0625. D8T-SU 3-shank rear mount ripper.

1480 Farm Equipment Parts. 1480 Farm Equipment Parts.

BIG TRACTOR PARTS, INC. ~ GEARED FOR THE FUTURE ~

STEIGER TRACTOR SPECIALIST. 1. We are your source for new & used Steiger drivetrain parts Series 1 - 9300 Series.

800-982-1769 www.bigtractorparts.com

1470 Heavy & Indust. Equip.



1470 Heavy & Indust. Equip. 1470 Heavy & Indust. Equip.

1470 Heavy & Indust. Equip.



2001 HITACHI 120-5 EXCAVATOR 6,400 hours, 90% undercarriage, manuals, spare parts.



1997 JCB Backhoe: 4WD. 4500 hours, extendahoe with extra bucket, quick connect, 4-1 loader bucket on front.



1982 John Deere Motor Grader 570: Reman motor with approximately 500 hours, front blade.

Units 617 5/8 Yard Crawler Drag Line Clamshell Crane: powered by 371 Detroit diesel \$3,500.

CASE INDUSTRIAL PARTS. We sell genuine, after market, and used CASE parts at discount prices nationwide.

DON PEILA TRACTOR REPAIR • PARTS. specializing in JOHN DEERE INDUSTRIAL EQUIPMENT.

NEW RENTING! D8T-SU 3-shank rear mount ripper. atimachinery.com

NEW, USED, AND REMAN PARTS

TOLL FREE: 1-877-928-1646. Reman Engines for Case/IH, John Deere, and Ford.



JD 4010, 4020 Clutch Kits \$175. SALVAGED TRACTORS. Seats w/Air Suspension \$1,025.



D & L Chain, Inc. "Specializing in Agriculture"

D & L Chain, Inc has a full welding, fabrication and machine shop. We carry chains, sprockets, bearings, pulleys, and much more.

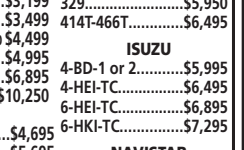
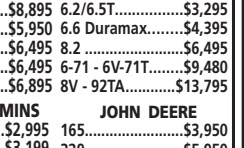
24HR EMERGENCY SERVICE. CALL US FOR QUOTES OR TO ORDER PARTS!



MADE IN THE USA. dlchain.com. 503-769-7992 | 800-772-7992

1520 Hay Equipment

CLERF Harvest Co HAY EQUIPMENT. Clamps Custom Fit to Carriage Mounts & Loaders.



We Also Rebuild & Repair All Brands of Hay Clamps. 888-338-0077 • info@clerfhayclamp.com