

# \$49.99

## BUYS IT ALL!

Full access to Capital Press for one year!



Newspaper Capital Press Ag Weekly is written and edited for the Northwest region.

Website www.capitalpress.com is updated 5 days a week with news, podcasts, video and ads.

ePaper An exact copy of Capital Press in pixels instead of print. Navigation uses all iOS gestures, stories don't jump to other pages, easy to share articles via social media or email.

iPaper Free Apps for viewing our ePaper on your iPad, iPhone, iPod Touch and Android.\*

e-mail The Daily Ag Update with the latest top ag stories is e-mailed to you 5 days a week!

**Capital Press**  
The West's Ag Weekly  
1-800-882-6789  
www.capitalpress.com

\* Go to www.capitalpress.com, scroll down to Capital Press E-Edition, click to "Create a new account." (first set of numbers on the first line of your mailing label). Then go to the Apple App Store and download your free Capital Press app.

Register with your subscriber number for full access.

59417 CP1  
Bob Smith  
1047 Loyola Ave NE  
Salem, OR 97303-4287

**1240 Cattle-Dairy**

50 Head of Holstein Springers: Jersey breed select semen. Within 60 days of calving. Enumclaw, WA. 253-261-6670

**JERSEY BULLS:** New Zealand Genetics, all AI or ET from 950 cow herd. Most are A2A2. Astoria, OR. 503-741-6378 Julian



**Mini Jersey Herd Dispersal:** NICE minis and mid-sized. All bred back. Some registered  
 • 21 month polled bull  
 • 3.5 year polled bull 44"  
 • 7.5 year mid-sized cow 48"  
 • 4.5 year mid-sized cow 48"  
 • 2.5 year polled A2A2 smaller/ mid-sized cow 46"  
 • 6 month polled A1A2 Heifer  
 • 50/50 Jersey/ Angus cow with flashy 1 month 3/4 mini Jersey bull calf. Toledo, WA. 360-304-2786 text/ call www.newheritagefarms.net

**ORGANIC DAIRY SPRINGERS**  
 High producing, good genetics, last 3rd gestation organic dairy springers or fresh cows for sale. Twin-Falls, Idaho. 208-308-2590

**1250 Cattle-Beef**

(13) **Charolais Cross:** solid mouth bred cows, bred to Kessler Angus bulls, to calve February, \$1350 per head. Walla-Walla WA. 509-386-3267

(175) **Salers Heifers:** Bred to calving ease Salers Bulls. Due February 20th for 80 days. Flying T Ranch, Sprague River, OR. 541-533-2416 cattle@flyingtsalers.com

(40) **Bred Black and Black Baldy Heifers:** bred to Angus Bulls. Start calving Feb. 1st. Excellent heifers out of high-producing cows, \$1700 each. (65) Black and Black Baldy Angus Cross heifers weighing approximately 700 lbs. John Day, OR. 541-932-4323, 541-620-0705

(43) **Bred Angus Heifers:** AI to calving ease bulls, to calve in mid-February, \$1400/ each. Christmas-Valley, OR. 541-420-2602

(7) **Limousin Bulls and Angus Cross:** Best offer, Grants Pass, OR. Call 541-476-2926

(85) **Commercial Black Angus Bred Heifers:** AI bred to low birth weight ABS Angus sires. Start calving February 7th for 60 days \$1,450 each. Can buy any amount. Madras, OR. 541-475-3324

(85) **Salers Bulls:** All ages from weaner to 2 year olds. Red and Black calving ease polled bulls developed on our eastern Oregon ranch for 36 years. Quiet temperament, delivery available. Flying T Ranch Sprague River, OR. 541-533-2416 cattle@flyingtsalers.com

**1-800-238-2934 Black Angus Bulls:** 18 months old, Aberdeen Upward Traction genetics. Semen tested, virgin, delivery available. Rolfe Angus Acres, Grass Valley, OR.

10 Certified Organic Grass-fed Angus Heifers: approximately 500 lbs. live weight. \$1.50/ lb. Chehalis, WA. 360-748-7873 pdolson2@gmail.com

**140 Yearling and Long Yearling Bulls:** Noah's Angus Ranch, Angus Cattle Since 1955. Cambridge, ID. 208-257-3686, noahsangusranch.com

2nd calf pregnant cow: to freshen April. Most black, you pick. Albany, OR. 503-871-9114

34 **Bred Angus Heifers** \$1600: average weight 8/17/16 was 917 lbs. Feb. March, a few in April calving, easy calving /high growth heifers out of easy calving/ high growth cows. Cows calve unattended on winter pasture. Bulls average EPDs on heifers were: CED +14.3. Weaning +66.6, Yr 119.3, BEPD -1.23, BS 145.6 The docility scores on the bulls were extremely low. Top priority. Shots, wormed. Long Creek, OR. 541-421-5300, Rich

**1250 Cattle-Beef**

300 Spring Calving Black Cows: 3 years to broken, calve through April, bred black bulls. Southeastern Oregon. 208-741-0755

(1,000) **Head Feed Lot:** heifer raising, feeders, cows. 20 cents yarding+feed. Placement of more than 100 head, free yarding. Albany, Oregon. 503-871-9114

**58 Bred Black and Black Baldy Heifers:** bred to Angus bulls, start calving January 1, \$1,600. Culdesac, ID. 208-843-5495

**Angus Bulls:** Coming 2 year old bulls. AI sires Final Product, SAV Bruiser, Brilliance and Thunder. Affordable Prices! Great EPDs, Call RB Cattle, Potlatch, ID. 208-596-9785

**ATTENTION! LIVESTOCK OWNERS:** Fact. 51% of cattle loss and 56% of sheep loss, due to predators, is caused by Coyotes (USDA). We are a family team of predator hunters wanting to help your operation. Covering OR. 541-521-3608

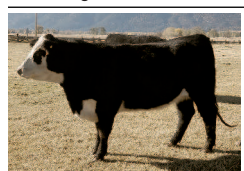
(10) **Polled Purebred Simmental Heifers:** early fall calving, bred to calving ease bull, very gentle, all black, \$1800 OBO. Princeton, ID. 208-875-1283

**BEEF CATTLE LEASING WANTED**  
 WANTED: Beef-Cattle. Percentage or Cash Lease. Albany, OR. 541-497-7204

**Black Angus Beef:** \$2.50 hanging weight. Yakima, WA. 509-910-7253

**BLACK HORNED TOTTORI 98% WAYGU**  
 Estate sale, cows with calves heifers and 3 year old bull. All must go. Beaver Creek, OR. keeley81@bctonline.com

**Bred Females All Ages:** Noah's Angus Ranch, Angus Cattle Since 1955. Cambridge, ID. 208-257-3686, noahsangusranch.com



**BRED HEIFERS:** High Quality Performers & Disposition. Black, Red Baldy & Herefords. Bred to Calving Ease Angus Bulls. Calve 3/10-5/10/17. \$1550 each. Haines, OR. 541-910-0660

**Bulls / Polled Herefords:** 18-24 months, price from \$1,500 to \$2,000 all shots. Portland, OR. 503-789-1531

**CALVING EASE BULLS FOR SALE**  
 Are you tired of sleepless nights? Give our Angus/ Longhorn composite bulls a try. Range raised and ready to help with your calving problems! Located in Southern Idaho 208-731-1037 or 208-731-0135

**COWS COWS COWS**  
 (67) **Top Quality Eastern Oregon Black Angus Cows.** Bred to high quality Angus Bulls. These are 3 and 4 year olds from a complete dispersal. This is a fancy set of outside range cows that can run in any type of country and will suit the most particular of buyers. Milton-Freewater, OR. For price and more information call Joe Chappell 509-301-4402

**COWS WANTED:** Looking for one load of January- February calving cows. Reasonable. Clovis, CA. 559-240-7817

**DEXTER CALVES AND COWS:** Registerable calves, 8 months. Cows bred to polled Dexter bull \$750+. Elkton, OR. 541-584-2550

**FULL BLOOD WAYGU:** Registered Bulls, Cows, Heifers. Bend, OR. rcbouma23@gmail.com

(5) **Bred Black Angus Heifers:** certified organic grass fed. Bred to low birth weight registered Black Angus bull. Bred to calve in May, \$1195/ each. Clatskanie, OR. 503-728-4561

**1250 Cattle-Beef**

(39) **Fancy Large-Framed Black Cows:** weighing approximately 1350 lbs. Priced for quick sale, \$1085 each. Will sell two or more. Delivery available. Milton-Freewater, OR. For more information contact Joe Chappell 509-301-4402.

**GELBIEH/ BALANCER HEIFERS**  
 Registered, top quality weaned and bred. Most black, all polled, some halter-broke. Oregon City, OR. 503-631-2315, email info@delanofarmsllc.com

**GENTLE RED ANGUS BULL:**  
 2 year old proven bull from VF Red Angus. Good heifer bull, very gentle and easy to handle. Lebanon, OR. 541-451-2050 or 541-409-2959

**GREAT STARTER HERD:** (4) 8 to 10 year old full mouth bred cows and (17) broken mouth bred cows, \$1,100 OBO. Baker City, OR. Please call 541-518-9284

Highly Efficient **Lowline and Braunvieh** influenced cattle. Bred cows and replacement heifers. Lewiston, ID. 208-790-4900



**Mastel Family Murray Greys:** Cows, heifers & bulls. Roseburg, OR. 541-679-0677

One Load of Good Young Cows: Spring calvers \$1,450 each. Durkee, OR. 541-377-1041

Polled Purebred and Percentage Black Simmental bulls, long yearlings, easy calving, AI sires, semen tested, \$2500. Princeton, ID. 208-875-1283

Purebred Charolais Long Yearling Bulls: Brownsville, OR. 541-466-3377 or 541-466-3187

**Quality (2) Black Angus Registered Heifers:** Ready for late spring breeding \$650 each. Washougal, WA. 360-904-3334

**Registered Black Angus Bulls:** Semen tested, BVD/PI negative. Docile and easy to work. Delivery available. JSL Angus, Madras, OR. 503-849-0803

**Registered Black Angus Bulls:** 18 months. Onward, Sleep Easy, CC&T, Front Range, and Final Answer bloodlines. Low birth weights, great dispositions. Discount given if multiple bulls are purchased. \$2,000/ head. Reedsport, OR. 541-271-4940.

**Registered Black Angus:** Yearling heifers and bulls, popular AI bloodlines. Scherwood Farms, Turner, OR. 503-769-6558

**REGISTERED RED ANGUS COWS**  
 15 Registered Red Angus cows from an established herd. Due in Mid February to first part of April. Sell one or all. 2,000. Nampa, ID. 208-941-1507

**Shorthorn Bulls:** March-April Yearlings. Selected for length, width, depth and muscling. Mothers sound, thick, calm, good milk. Good carcass data. Coulee-City, WA. Call 509-632-8709, 509-683-3272

**Looking for CATTLE RANCHES?**  
 Go to Class. 356  
**Capital Press**  
 The West's Ag Weekly  
 www.capitalpress.com  
 1250-1-53-4/#13

**1260 Bison**

(5) **Bison Heifers:** 8 months old \$1,400 each or \$1,200 each for 2 or more. Maupin, OR. Dave 503-936-4215

**1280 Livestock Equipment**  
 Livestock Feed Mixer: refurbished, \$2500. Castle Rock, WA. 360-274-4071

**Livestock Panels:** 16' (6) rail, (3) brace, \$106 each. 12' panels, (6) rail, (2) brace, \$83 Bow gates, all lengths and sizes. These panels are new Green color, hundreds available. **Heavy 16' Feeder Panels,** \$280 each. La Grande, OR. 541-805-9279, 541-963-6258

**Powder River Calf Table:** new paint \$1,000. Hermiston, OR. 541-571-1308

www.jonspipe&supply.com has **Monster Hay Feeders:** designed for big bales, saves 30 percent of hay, pays for itself first year. 10 year warranty. Call Jon 530-949-2285

**1310 Dairy Eq. & Supplies**  
**Kiln Dried Shavings:** truck-load/ minimum 18 unit load, Forest Grove, OR. 503-849-0216

**1310 Dairy Eq. & Supplies**

**Polydome Calf Nursery:** Hutches available for various climates. Western Polydome, Inc. Monroe, WA. 800-822-5837

SIGN UP TODAY FOR FREE WEEKLY DAIRY E-NEWSLETTER: access.capitalpress.com/newsletter.php

**Farm Seller™**  
 AMERICA'S FARM AND RANCH DATABASE



**NEW MANURE SPREADER**  
 400 bu. • BUY OR RENT Call Scott at Barr-Tech Compost/Organics Recycling Authorized Dealer of PK RITE Spreaders 509-590-0437 www.Barr-Tech.net Sprague, WA 51-2/#14

**1320 Tanks & Storage**  
 5,000 GALLON FUEL TRAILER  
 Stainless steel two compartment tank with storage boxes on each side. No leaks, currently storing Jet A. Will consider Delivery. Riggins, ID. Ask for Guy 208-628-3037

**1330 Generators**



**3 PHASE GENERATORS**  
 2009 Military Generators, 3 phase 15kw, Yanmar Diesel 226 hours and 52 hours, can run in series for 30kw, \$5,800 each, \$10,800 for the pair with trailers. Lebanon, OR. 541-990-7873



**GENERATORS:** Low hour takeouts, 20kW to 200kW, diesel, propane, & natural gas. Cooperstown, ND. We ship nationwide. 701-371-9526 or 701-367-4305. www.abrahamindustrial.com

**CLASSIFIED LINE ADS GET RESULTS**  
 1-800-882-6789  
 www.capitalpress.com

**Registered Cows & Heifers for Sale**  
**Angus & SimAngus**  
 Visit our website [www.trinityfarms.info](http://www.trinityfarms.info) to view offering  
**Trinity Farms**  
 Ellensburg, WA  
 Most Calving March & April  
 Mike & Paulette Forman • 509.968.4800  
 Robb & Debbie Forman • 509.201.0775  
[trinity@fairpoint.net](mailto:trinity@fairpoint.net)

**1380 Irrigation Equipment**

**END OF SEASON SPECIALS!**  
 Winterize and Repair your equipment now so it's ready to work for you next season!

**ERNST IRRIGATION**  
 ccb# 185365

**TRAVELER SERVICE\***  
 Annual service & inspection  
 • Small • Med. • Large • Booster  
 \$260\* \$340\* \$380\* \$440\*

**PANEL INSPECTIONS\***  
 Service includes the following:  
 • Loose connections • Noisy starters  
 • Rusty components • Water damage  
 • Check for signs of heat build-up  
**\$250\***

**VFD SERVICE\***  
 • Inspection  
 • Change filters  
**\$200\***

**10% OFF PARTS & LABOR**  
 • Irrigation Pipe Repair  
 • Pump Service  
 • Big Gun Maintenance

**PUMP SERVICE\***  
 10% OFF Parts and Labor  
 Great time to have bearings, packing, and seals checked out!

Trade Ally of **EnergyTrust** of Oregon

**www.ErnstIrrigation.com • (503) 633-1111**  
 20179 Main St., St. Paul, OR 97137  
 Open Mon-Fri 8am-5pm; Sat 8am-2pm

**1250 Cattle-Beef**

**western VIDEO market**

**Upcoming Sale**  
**Thursday, January 5th**  
**Cottonwood, CA**  
 Consignment Deadline: Wednesday, Dec. 28th

**WWM CATTLE.COM**

For more details: Call our office at (530) 347-3793 or [wvm@wvmcattle.com](mailto:wwm@wvmcattle.com)  
 Look for the catalog and video on our web site:  
**www.wvmcattle.com**  
 Market your cattle with the professionals!

**1280 Livestock Equipment**

**RangeBoss Bale Processing Equipment**  
 All Hydraulic Powered • Truck or Trailer Mounted

The RangeBoss is built to streamline the feeding process. Still servicing all of your hay handling and light material needs.

**PRESEASON BLOWOUT!**  
**800-827-8257**  
 MILLERFORKS.COM • HEPPNER, OR • 541-676-5472

**LEBANON AUCTION YARD, INC.**  
 37063 KGAL Dr., Lebanon, OR 97355

**AUCTION SCHEDULE**  
**Dec. 15th FEEDER Sale**  
**Dec. 22nd Livestock Auction**  
**Dec. 29th Livestock Auction**

To Pre-consign livestock, call:  
 Terry Scott  
 (541) 409-7490 (541) 968-4139  
 Office (541) 259-1251

**www.lebanonauctionyard.com**  
 WE ARE ALSO ON FACEBOOK.  
 LIVESTOCK SALE EVERY THURS. AT 1PM

**MARKET SCHEDULE**

- Dec. 17: Livestock Sale
- Dec. 18: Monthly Horse Sale
- Dec. 24: Merry Christmas! Closed.
- Dec. 31: Happy New Year! Closed
- Jan. 7: Livestock Sale

**Market Report for 12/3/2016**  
 Total Head Count: 624  
 Top cows high dressers: \$45.00-\$55.00. Top cows ave: \$46.33  
 Top bulls high dressers: \$55.50-\$71.50

Choice Steers:	Choice Heifers:
med. to lrg frame #1 & #2's	med. to lrg frame #1 & #2's
300-400 lbs No Test	300-400 lbs \$100.00-\$125.00
400-500 lbs \$110.00-\$135.00	400-500 lbs \$100.00-\$126.00
500-600 lbs \$100.00-\$127.00	500-600 lbs \$100.00-\$120.00
600-700 lbs. \$100.00-\$116.50	600-700 lbs \$90.00-\$105.00
700-800 lbs. \$86.00-\$101.00	700-800 lbs. \$80.00-\$90.00
800-900 lbs. \$80.00-\$90.00	800 and up \$80.00-\$90.00

**EUGENE LIVESTOCK AUCTION, INC.**  
 92380 Hwy 99 So. • Junction City, OR 97448  
 800-288-6217 • 541-998-3353  
 Bruce Anderson, owner • Cell 541-912-2940  
**www.eugenelivestock.com**  
 REGULAR AUCTIONS EVERY SATURDAY AT 11:30 AM  
 HORSE SALE 2nd SUNDAY OF EVERY MONTH AT 12 NOON