

THE CAPITAL PRESS SALES TEAM IS HERE TO SERVE YOU!

- Real knowledge
- Real people
- Real results!



Greg Hains
E Oregon,
SE Washington,
California
& W Nevada
1-800-882-6789



Brittany Vanderhoff
North
Willamette Valley
503-871-7957



Brittany Steele
NW Oregon &
SW Washington
(503) 871-7956



Carl Bamford
SW Willamette Valley
SW & Central Oregon
(541) 521-9008



Denise Treadwell
NW and N Central
Washington
(253) 677-9917



Bill Blanck
E Washington,
Montana,
& N Idaho
(509) 999-3130



Matt Petrie
SE Idaho
N Utah
(208) 880-0455



JoAnn Vanderwey
SW Idaho
& NE Nevada
(208) 880-4334

DEADLINE FOR CLASSIFIED DISPLAY ADS:
Weds. @ 10AM
503-364-4798
FAX 503-364-2692

DEADLINE FOR CLASSIFIED LINE ADS:
Weds. @ Noon
503-364-4431
FAX 503-370-4383

Capital Press
The West's Ag Weekly
1-800-882-6789
www.capitalpress.com

1280 Livestock Equipment

Big Valley Tub and Alley System: \$4000. Teco Cal table, \$350. Potter Valley, CA. 707-272-9071

Livestock Panels: 16" (6) rail, (3) brace, \$106 each. 12" panels, (6) rail, (2) brace, \$83 Bow gates, all lengths and sizes. These panels are new Green color, hundreds available. **Heavy 16" Feeder Panels,** \$280 each. La Grande, OR. 541-805-9279, 541-963-6258

Paul 242 Single Animal, Cattle Portable Scale: used, electronic \$4500. NW Farm Supply, Hermiston, OR. Call Mike 541-561-6047

A GREAT CHRISTMAS GIFT: A True Ranching Story "Starting Below The Bottom" by Don Nonella. This is a remarkable biography of his adventure filled life. A true story of ranching in California, Oregon and Nevada. Only \$25. Pay by phone 208-412-2045.

Silencer Hydraulic Chutes: Express portable corrals, Sweep tubs, alleys and bud boxes. All in Stock. NW Farm Supply, Hermiston, OR. Call Mike 541-561-6047



Trojan Cattle Squeeze, hydraulic, pregnancy checking gate, \$6900 USD. Delivery negotiable. Call 250-550-4610, okatrans@telus.net



Solar Powered Wells for Livestock and Irrigation: Serving Oregon, Washington and Idaho. Call Arrow Creek at 406-208-3028

www.jonspipe&supply.com has Monster Hay Feeders: designed for big bales, saves 30 percent of hay, pays for itself first year. 10 year warranty. Call Jon 530-949-2285

Wanted Grinder/ Mixer for grinding and mixing corn and peas. 503-361-9633

BOLD IS BETTER

Make sure the reader sees the most important information in your classified line ad quickly and easily.

For just \$2 more per ad per week you can **BOLD** specific copy in your ad.

Just ask the sales rep. when you call in your classified line ad about **BOLD**-ing your ad.

DEADLINES:
Classified Display Ads, Weds. @ 10AM
Classified Line Ads Weds. @ Noon
1-800-882-6789
Fax 503-370-4383
www.capitalpress.com

Capital Press
The West's Ag Weekly

1380 Irrigation Equipment

END OF SEASON SPECIALS!
Winterize and Repair your equipment now so it's ready to work for you next season!

ERNST IRRIGATION

TRAVELER SERVICE*
Annual service & inspection
• Small • Med. • Large • Booster
\$260* \$340* \$380* \$440*

10% OFF PARTS & LABOR
• Irrigation Pipe Repair
• Pump Service
• Big Gun Maintenance

PUMP SERVICE*
10% OFF Parts and Labor
Great time to have bearings, packing, and seals checked out!

Special valid for work scheduled by Jan. 31, 2017.
*Additional fees may apply for parts and repairs.

www.ErnstIrrigation.com • (503) 633-1111

20179 Main St., St. Paul, OR 97137
Open Mon-Fri 8am-5pm; Sat 8am-2pm

1310 Dairy Eq. & Supplies

Kiln Dried Shavings: truck-load/ minimum 18 unit load, Forest Grove, OR. 503-849-0216

Polydome Calf Nursery: Hutches available for various climates. Western Polydome, Inc. Monroe, WA. 800-822-5837

SIGN UP TODAY FOR FREE WEEKLY DAIRY E-NEWSLETTER:
access.capitalpress.com/newsletter.php

Stainless Steel Knee Operated Sink: Advance Tabco, gently used, 23"x17"x19.34 deep, \$125. Nampa, ID. 208-391-1512

PLACE LINE CLASSIFIED ADS TOLL-FREE FROM ANYWHERE!
1-800-882-6789



400 bu. • BUY OR RENT
Call Scott at Barr-Tech Compost/Organics Recycling
Authorized Dealer of P&H Spreaders
509-590-0437
www.Barr-Tech.net
Sprague, WA

1320 Tanks & Storage

10,000 Gallon Diesel Tank: mounted on 37' flatbed trailer, pump, meter and filter, \$5000 OBO. Independence, OR. 208-599-1251

1330 Generators



GENERATORS: Low hour takeouts, 20kW to 2000kW, diesel, propane, & natural gas. Cooperstown, ND. We ship nationwide. 701-371-9526 or 701-367-4305. www.abrahamindustrial.com

1340 Shop Equipment & Tools

Smithy Granite 1340: Lathe mill drill with tooling, like new, \$3000. Trout Lake, WA. Leave Message 541-490-4760

1380 Irrigation Equipment

(10) 1/4 mile Farmland Wheel Lines: 76" wheels x 4" aluminum pipe, gear reduction/ chain drive movers with Honda motors, \$2800 each. Western Idaho. 208-250-7148

WANTED: USED PIVOT
Looking to buy a used Lindsay Greenfield Mini-Pivot, 400 series, in good working condition. If you have one and are thinking of upgrading to a full size pivot, call or email Jim at 541-934-2429 or jim.driscoll3@gmail.com.

Your Leading Source for Irrigation Supplies

HP Pipe & Supply
• Drip Irrigation • Filtration • Design
598 Baseline, Cornelius, OR 97113
Phone (503) 357-4217
www.hpspipe.com
rickw@hpspipe.com

Trade Ally of **EnergyTrust** of Oregon

WATER MASTER SERIES AND EVERGREEN
SUPERIOR SERVICE & DESIGN
• All your needs for irrigation parts service
• We build custom equipment for your special needs.
• Hose replacements & fusion repairs
• Transport Tanks • Rental Returns & Used Equipment
• US AGRICULTURE Dairy Waste Equipment

VALLEY WORKMAN
Truck Equipment
• Full Service
• Alterations
• Dump bodies • Hoists
• Farmbeds • Flatbeds

VALLEY FAB
CORP
10910 Portland Rd. NE • Brooks, OR
Call: 503-792-3739 • Fax: 503-792-3738

1380 Irrigation Equipment



GORMAN-RUPP PUMP (NEW)
Brand New Gorman-Rupp Pump, Model T6A3S-B, 6" "Super T" Series Self-Priming Centrifugal Pump in standard cast iron construction with oil lubricated tungsten titanium carbide mechanical seal and 6" suction & discharge NPT flanges. Includes Gorman-Rupp PN# GRP33-07-CI-Poly; ARV, \$9,000 OBO. Red Bluff, CA. 530-200-2644



84,000' of Drip Tape: .26 gph emitters every 36", \$4,000. Dayton, OR. 503-437-4833



1999 CASE 360 TRENCHER:
1999 Case 360 trencher, 1,258 hours. Asking price, \$8,500. Hillsboro, OR. Email newton257@gmail.com

Pivots: Good, various lengths, all brands & late models. No rust. Plus some pivot parts, and buried wire. Call Keizer, OR. 503-881-3232, 503-390-3210

Used Western Wheel Lines: 5"x 7" lines with converted movers to Honda engines. Ready to ship from Eastern Oregon. \$7500 each. Will deal if taking more than one. Call 541-963-4195

IRRIGATION EQUIPMENT BOUGHT. SOLD. RENTAL.
New & Used Parts.
• Aluminum Pipe
• Cert-a-lok
• Siphon Tubes • HDPE
• Sand Media Filters
• Wheel Lines • Pumps

PACIFIC SOUTHWEST IRRIGATION

Stockton
Dixon • Turlock
Office: (209) 460-0450
Fax: (209) 982-1832
www.pacsouthwestirrig.com
Carlos (209) 481-7677
Jim (209) 986-0099
1380-45-4-1/18

1380 Irrigation Equipment

(85) Used Pivots: Engines, pumps. Garden Valley, ID. Call Mike at 208-420-1480, or see www.pivotsplus.com

2016 IRRIGATION TRAVELER:
Ernst Built ECHO Irrigation Traveler. 1100' 3" hose. All manual, no computers. Works perfect. \$22,000. Myrtle Point, OR. Contact Beau 541-297-4072

1390 Packing, Processing Eq.
2 Complete packing lines and 4 row cup sizer with 11 drops. Conveyors, tables, bin filler, 5 bins of single and 3 phase motors/deer-heads and helping. Going to go by Christmas. Call bobby 541-784-5411 for more information. Roseburg, OR.

New Boxes 1/2 Price:
1.9 bushel waxed/ printed vegetable, \$0.75 each. 1/2 bushel waxed vegetable, \$0.55 each. 12 pint cherry tomato/ berry master, \$0.50 each. 1 pint plastic berry baskets, boxes of 1200 \$50.00 each. Billings, MT. 406-698-3806

1410 Logging Equipment
1998 John Deere Processor: Wartah 620 head, new engine out of crate, good undercarriage, great shape, \$55,000. Cottonwood, ID. 208-983-8078, 208-962-3150



CAT D-8 2U HYDRAULIC
Rebuilt 2U. Runs great. New track and rollers etc. Priced to leave at pit or work location, \$9000. Willamette Valley, OR. Message or text 503-910-4010

Older Machinery: Chippers, Vans, debarker, new rock blade, John Day, OR. 541-575-1525

1440 Sawmill Equipment

CUSTOM EDGER
Edger for Smaller Saw Mills: made to order, run with tractor PTO and tractor hydraulics. 3383 Highway 25 North, Northport, WA. 509-732-4029, 509-675-3623

1450 Forklifts

Used Lift Trucks
Also New & Used Parts
All sizes, makes & prices

LIFT TRUCK SERVICE
888-890-1450
forkliftsales.com
Ellensburg, WA

SAVINGS ARE HOT!
at Capital Press
1-800-882-6789
www.capitalpress.com

1470 Heavy & Indust. Equip.

1470 Heavy & Indust. Equip.

1450 Case Track Loader: with ripper, excellent condition, runs great, new paint, good undercarriage, \$15,000 OBO. Deer-Park, WA. 509-993-0258



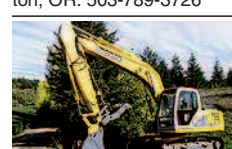
1982 KOMATSU 355-3 DOZER: New heads, new pistons and liners. 15" blade, 5' ripper. Good condition, \$35,000 OBO. Lakeview, OR. 541-891-8617

1985 D5B Caterpillar: 15,000 hours, includes operating manual, brush blade, arc winch with new cable, \$25,000. Baker City, OR. 541-519-5740

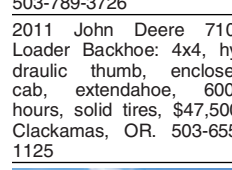
1986 Peterbuilt, 400 Horsepower: 16 yard box, new tires, with Eager Beaver, 20 ton trailer. Longview, WA. 360-636-4866



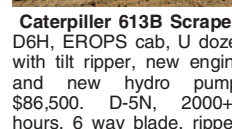
1987 CAT Vibratory Pad Foot Compactor: Model CP-323, drum drive, 4-foot drum, 5' blade, 9300 lb. weight, low hour machine, 500 hours, \$12,000. Gaston, OR. 503-789-3726



2006 Kobelco SK160 Excavator LC: hydraulic link thumb, air and heat, pin grabber quick connect, 24" digging bucket, 4050 hours, excellent condition throughout. \$54,500. Gaston, OR. 503-789-3726



2011 John Deere 710J Loader Backhoe: 4x4, hydraulic thumb, enclosed cab, extendahoe, 6000 hours, solid tires, \$47,500. Clackamas, OR. 503-655-1125



Caterpillar 613B Scraper: D6H, EROPS cab, U dozer with tilt ripper, new engine and new hydro pump, \$86,500. D-5N, 2000+ hours, 6 way blade, ripper, \$106,500. Scraper, 613-B ROPS, \$27,500. Kenworth water truck, 3800 gallon, commercial built, new engine and many new repairs, \$41,500. Salem, OR. Please Call: 503-362-3055

Hitachi EX50DLC-5
Hydraulic quick change. \$39,500
bizzardsequipment.net
47-2/#8

1470 Heavy & Indust. Equip.

2011 Caterpillar 226B3, Skidsteer, 950 hours. Excellent rubber, like new condition. \$18,950. Prineville, OR 503-679-6476

Case 850 Long Track Dozer: 6-way blade, winch with arch, 3725 hours. Longview, WA. 360-636-4866

CAT D6C 10K: Twin tilt, angle blade, winch and arch, lots of repairs just completed, sandblasted and painted, excellent condition, \$39,500. Cottonwood, ID. 208-983-8078, 208-962-3150

503-668-5024 503-407-9062
"We Buy Equipment"



1998 Case 580L
Enclosed cab, AC, 4x4, extendahoe, very nice, 2900 original hours. \$28,500



Terex VR843 Reach Forklift
Enclosed cab, 4x4x4, quick change. \$19,500



TD25C International/Dresser
4-way blade ripper, low hours. \$17,500



2006 Interstate 50 TDL
50-Ton, 3-Axle Tilt Bed, Under 5,000 Original Miles. Like new \$29,500



CAT EL 200 Excavator
Quick-Change Thumb \$24,500



Hitachi EX50DLC-5
Hydraulic quick change. \$39,500
bizzardsequipment.net
47-2/#8



2009 Deere 672G
Erops, A/C and heated cab, 6x6 all-wheel drive, 14' blade, ripper, push block, good tires, well maintained, tight, very clean machine. \$117,500



2008 Cat D6K1GP
Erops A/C and heated cab, 6-way blade, sweeps and screen, winch and fairlead, good U/C, 5,000 hrs, well maintained. \$102,500



2011 Kenworth T370
4,000 gal., Paccar eng., 300 HP, Eaton 10 speed, spring suspension, 33,000 miles, nice well maintained truck, hose reel, good tires, job ready condition. \$89,500



2007 Komatsu PC 200LC-8
A/C and heated cab, hyd thumb and coupler, 6,000 hrs., good U/C. \$69,500



2007 Challenger MT525B
100HP, Erops A/C and heated cab, 4x4, joy stick controlled side boom rotary brush cutter, 3,000 hrs, well maintained. \$100,000. CALL

Financing Available
Trades Accepted
Randy
541-830-3966
Cell# 541-944-5067
White City, OR
www.wilsonsequipment.net
47-4/#5

THANKSGIVING Advertising Deadlines



Because of Thanksgiving holiday, our ad deadlines for the November 25th, 2016 issue must move ahead to:
Classified Display Ads DEADLINE TUES., NOV. 22nd @ 10AM

Classified Line Ads DEADLINE TUES., NOV. 22nd @ Noon

Capital Press
The West's Ag Weekly

1-800-882-6789
www.capitalpress.com

TRUCK SCALES • LIVESTOCK SCALES • WAREHOUSE SCALES • RENTAL SCALES

Your Truck and Livestock Scale Specialists

	NEW SCALES Built • Delivered • Installed Leased • Rental Scales	
	USED SCALES Bought • Sold • Traded Repaired • Rental Scales	

We are happy to announce we have acquired **Sanstrom Scales** in Twin Falls, ID. We look forward to serving their long-standing customers.

Steve Orr 503-510-3540 Oregon Scio Bend 1-800-451-0187
Washington Spokane Benton City 509-535-4295
Idaho Twin Falls Nampa 1-800-451-0187

www.scalesnw.com • SteveOrr@scalesnw.com
SCALE SERVICE • SYSTEMS • PARTS • SALES & CONSTRUCTION