

1480 Farm Equipment Parts

3-pt And PTO Units: For International Harvester 9270, 9280, 9370, 9380. Both units come with controls. 3-pt, \$6500; PTO, \$7500. Tangent, OR. 541-928-1646.

1480 Farm Equipment Parts

Discount Tractor Parts: new, used, rebuilt, local warehouses. Garfield, WA. Call 800-967-8185 www.drapertractor.com

1490 Antique Farm Eq. & Parts

1956 JOHN DEERE MODEL 70 Diesel with pony motor. Needs engine work, \$2100. Sprague River, OR. 707-407-5632.

1958 Allis Chalmers I140 Backhoe: Engine needs overhaul, make offer. White-Salmon, WA. 509-493-3657

International M Tractor: good tires, runs good, 3-point hitch, wood splitter, rotary mower, post hole digger, \$4000. Junction City, OR. 541-998-2745

1520 Hay Equipment

2004 Oregon Roadrunner Hay Squeeze: Cummins motor, Allison automatic, excellent shape, \$140,000. Ellensburg, WA. 509-899-1438

#1 Bale Wagons: Buy, Sell, New Holland 2&3 wide self-propelled, pull-type models, parts, tires. Caldwell, ID. 208-880-2889 www.balewagon.com

1520 Hay Equipment

2013 Roadrunner: 3-stage mast, like brand new, \$175,000. Rickreall, OR. 503-932-2108

IT'S SO EASY TO PLACE CAPITAL PRESS CLASSIFIED ADS... PHONE TOLL FREE 1-800-882-6789

1520 Hay Equipment

2014 Smucker, 15' Weed Wiper: Mount on ATV. Very little use, \$900. Lebanon, OR. 541-905-6064

John Deere 3830 Swather: steel conditioner/ twin knife. Field ready, worked good all season, \$12,000. Ellensburg, WA. 425-591-9653

1520 Hay Equipment

Case IH Baler 8585: 3x4, (Hesston 4790), 35,000 + bales, completely rebuilt, very nice, \$32,500. Deer Park, WA. 509-994-9520

Hesston 4600 Baler: \$6500. 1030 Harrowbed, \$3900. Alfalfa, 3x4, \$140/ ton. Orchardgrass, 2- String, \$175/ ton. Culver, OR. 509-250-2846.

Late model New Holland 1095 with 1032 Mil-Stak Bale Clamp. \$90,000 or \$65,000 without Mil-Stak. Sod Busters Sales, Polson, MT. 877-735-2108, 406-883-2118

New And Used Parts: for all models New Holland bale wagons. Largest Inventory in North America. Sod Busters Sales, Polson, MT. 877-735-2108 or 406-883-2118

www.jonspipeandsupply.com has Monster Hay Feeders: designed for big bales, saves 30 percent of hay, pays for itself first year. 10 year warranty. Call Jon 530-949-2285

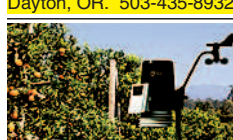
1540 Orchard, Vineyard Equip.

Flory Sweepers: Cab and open station, starting at \$21,000. Silverton, OR 503-932-0766

1540 Orchard, Vineyard Equip.



GRAPE HARVESTER: 2010 Gregoire G1, grape harvester, pull type. Clean-tech Vario cleaning system, professionally rebuilt in 2016. 261 hours, \$105,000. Dayton, OR. 503-435-8932



DTN AG Weather Stations: Monitor changing weather conditions and capture data for critical management of water, spraying applications, frost and freeze actions, workforce safety and efficiency, and compliance with government regulations. Field data is available, captured for your Agronomics decisions. Paul Anderson at 515-221-2014, paul.k.anderson@dtn.com

OVS MacroBins: The original PNW distributor offering the full range of MacroBins. McMinnville, Medford, Pasco and Salem OR. 1-800-653-2216, www.ovs.com

Trellising Vinyards, Berries and Trees: We've got quality trellising supplies at competitive prices. McMinnville, Medford, Pasco and Salem OR. 1-800-653-2216, www.ovs.com

Weiss McNair Nut Sweeper: 7' head, 23HP, used some this season, \$3700 OBO. Albany, OR. 541-990-9319 No Sunday Calls.

RCO Baits Gophers • Squirrels Voles-Moles Dealer Locator 1-800-214-2248 Harrisburg, OR 43-2/85

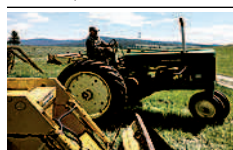
Looking for ORCHARD/ VINEYARD PROPERTY? Go to Class. 387 Capital Press www.capitalpress.com 1540-1-53-1/#13

TALLMAN LADDERS Crafted for Safety, Longevity, Stability and Affordability! Quality Made in the U.S.A. Since 1954 tallmanladders.com (541) 386-2733 (800) 354-2733 43-1/8

1560 Tractors

#1 Massey Ferguson Tractors: Oregon City, OR. 503-631-3411

1952 FORD 8N: has 25 hours since complete, stripped to parts, rebuild- new generator, carburetor, wiring harness & battery. Price includes 6' harrow, 4' blade, 4' mower, \$3900. 503-678-5478, areittr4@hotmail.com



1955 John Deere 660: runs, good shape, \$2300. Maupin, OR. Jeff or Diana 541-610-5050



1995 JOHN DEERE 8770 7400 hours meticulously maintained with records, kept inside, 2nd owner since new, 20.8-42 tires at 45%, front and rear differential lock, cast wheel weights, 3 remotes, 24 speed partial power shift, \$40,000, Omak, WA. Call with questions, pictures available. Chuck 509-322-2032.

1560 Tractors



1996 Case IH Tractor 9370: standard transmission, 7600 hours, 6 new tires, four remotes, \$49,500 OBO. Oregon, CA. 530-520-0062, 530-720-2189

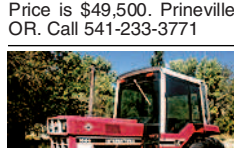


2014 Massey Ferguson 7619: 751 hours, loaded, CVT transmission, \$105,000. Rickreall, OR. 503-932-2108

Case IH 4494 Tractor with 7000 hours: 4 new inside tires, PTO and 3-Point hitch. Everything works, no leaks, good condition, \$21,000. Pictures available. Middleton, ID. 208-585-3629



CASE IH 7150 MAGNUM This tractor has only 164 hours on complete new engine, radiator, hoses, etc. Please call for information. Price is \$49,500. Prineville, OR. Call 541-233-3771



INTERNATIONAL 1586 International 1586, 160HP, Excellent Condition, cab, A/C, duals, 3 remotes, \$20,000. Bishop, CA. Call 760-937-0764

John Deere 300HP 8870: 8800 hours, 12- speed, power shift, triples, field ready, good condition, \$38,500. New Holland 355 Feed grinder/ hammer mill, holds 6,000 lbs., great condition, \$6,400. Elgin, OR. 541-437-8181, 541-276-6222

MERIDIAN EQUIPMENT #1 resource for hard-to-find equip. & parts to restore old tractors, OR let our trusted experts do the restoration! 360-398-2141 MeridianEquip.com Bellingham, WA 1560-41-4-27/24

www.trailer-world.com • www.trailer-world.com

NEW BRANSON 4520R with LOADER Ray and Chuck look forward to helping you find the Branson tractor for your needs. 45 horsepower diesel engine • Quick-Change front end loader; 2100lb. lift • Quick-Change skidsteer type bucket • Folding Roll-Over-Protection bar • Hydrostatic power steering • 2-speed PTO • Block heater • 4-year Drive Train Warranty • Financing available O.A.C. 0% financing available in lieu of Bucket Loader MSRP \$34,068.29 **OUR PRICE \$22,900** TRAILER WORLD John 3:16 A Division of TRAILER SALES 517-83 551 SE 13th St, Ontario, OR 97914 (541) 889-4310 • www.trailer-world.com www.trailer-world.com • www.trailer-world.com 43-2/8

Branson TRACTORS



SERIES 3120R 4020R 3520R 4525R 3510H 4720H 6640 8050 **Model 4020R** 24 - 80 hp., 4 wheel drive Compact Synchro-Shuttle Hydro 24, 28, 35, 47 hp

BRANSON BOSS 800 UTV's Two-or-Four door models have 60hp and speeds up to 58mph. • Front Winch • Hard Doors & Roof • Electric Dump Bed • 14" Wheels with 27" Tires • Top Mount LED Light Bar

THE TRACTOR STORE (541) 342-5464 5450 W. 11th, Eugene, OR 43-1/5

CLERF Manufactured by HarvestCo www.clerfhayclamp.com **Clamps Custom Fit to Carriage Mounts & Loaders** C1300 TELEHANDLER C950 BALE CLAMP C3000 HEAVY DUTY SQUEEZE WITH SIDE SHIFT WITHOUT SIDE SHIFT We Also Rebuild & Repair All Brands of Hay Clamps 888-338-0077 • info@clerfhayclamp.com Ellensburg, WA 43-2/#24

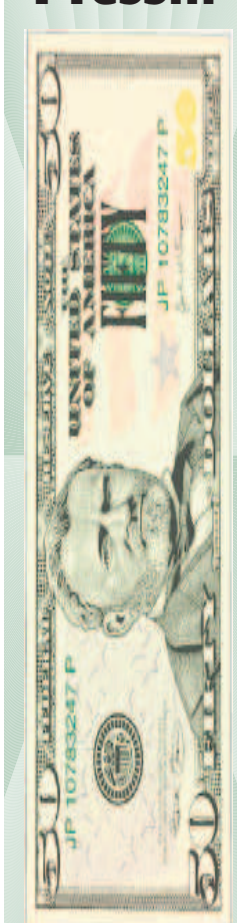
1540 Orchard/Vineyard Equip. 1540 Orchard/Vineyard Equip.



QUICKSILVER POLE and POST HIGHEST QUALITY POST AND POLE PRODUCTS NOW OPEN, our state-of-the-art facility in La Pine, Oregon, manufacturing post and pole products for all Home, Ranch, Farm and Agricultural applications.

STOCKING POPULAR SIZES SUCH AS: • 8', 10', 12' lengths with 4", 5", 6" and 7" diameter tops. • 14' and 16' lengths with 3", 4" and 5" diameter tops. • 4" x 21' Line Poles • 5" x 20' Line Poles • 6" x 22' Anchors • 7" x 22' Anchors All our products are harvested and manufactured in the U.S.A. Sizes available from 3"x 8' to 8"x 24'. Treated or Untreated. Custom sizes available. Call for your quote! Prices quoted are F.O.B. La Pine, Oregon. Delivery to your location available - ask for details. NO QUANTITY TOO LARGE OR TOO SMALL! SPECIALIZING IN BEST QUALITY HOP POLES! To discuss your project, please contact: Travis Cook, Sales Mgr. | Joe Davidson, Sales 541-371-1130 | 541-699-2498 Or email Travis or Joe at: qscpoles16@gmail.com Quicksilver Contracting Co., 64682 Cook Avenue, #99 Bend, OR 97703 Office: 541-382-3653 43-4/#5

Stretch your dollars with ads in Capital Press...



the West's BEST Ag Weekly! 800-882-6789 www.capitalpress.com

1490 Antique Farm Eq. & Parts

1490 Antique Farm Eq. & Parts

1490 Antique Farm Eq. & Parts

1490 Antique Farm Eq. & Parts

1490 Antique Farm Eq. & Parts

WILLAMETTE VALLEY AG EXPO **ANTIQUE FARM EQUIPMENT SHOW** Featuring hobbyist tractors & farm equipment Sponsored by Farmland Tractor Tue, Nov. 15 • Wed, Nov. 16 • Thur, Nov. 17 9am-6pm 10am-9pm 10am-5pm Bring your favorite antique to Albany! 30 years old or older; steel wheels welcome. 2nd and 3rd generation owners welcome. Pizza social Wednesday evening **RULES FOR WVAE ANTIQUE EQUIPMENT DISPLAYS:** • Any production manufactured piece that would be used as part of a farm operation will be considered. Tractors, combines, balers, threshers, swathers, tillage tools, haying tools, are a few examples of desired units. • All displays will be required to be in clean, safe and attractive condition. Our objective is to display pieces that attract attention for show purposes. Owner's names and declared use of the display piece can or will be exhibited on the display unless requested otherwise. • All displays will comply with Fire and Life Safety regulations and all Linn County Terms and Conditions for all exhibitors. • Move out will begin at 5:00 PM November 17, and all equipment will be required to be out of the buildings by 10am, November 18. • Equipment will be displayed during hours open to the public. All displays indoors or under cover. **MOVE IN:** SUNDAY, NOVEMBER 13th - 1:00pm - 6:00pm. MONDAY, NOVEMBER 14th - 8:00am - 8:00pm TUESDAY, NOVEMBER 15th - 7:00am - 9:00am - CARRY-INS ONLY. **MOVE OUT WILL BEGIN 5:00 PM THUR., NOV. 17th, AND MUST BE COMPLETED BY 10AM ON FRIDAY, NOV. 18th.** Staging can be arranged. To request your ENTRY FORM or for more information, call 541-990-0183. Write to Willamette Valley Farm Collectors, PO Box 774, Jefferson, OR 97352. 43-4/#5

FINISH THE FIGHT AGAINST BREAST CANCER MAKING STRIDES Against Breast Cancer American Cancer Society 160-41-3-4/#13