

80 Trucks

1997 Ford 1 Ton Super Duty: 12' bed with steel side racks, 7.3 liter diesel, 5-speed manual transmission, 187,000 miles, runs good, \$4,700. Monmouth, OR. 503-838-2638

1951 GMC Tractor: 950 Fat Cab, 70 percent restored, 671 GMC engine, \$4,200. Monroe, OR. 541-321-9088



2007 PETERBILT 387 C-15 Really nice well taken care of 2007 Peterbilt 387. C-15 ACERT motor. 1,000,000 miles. 13 speed. Brand new tires and rims, batteries, starter, alternator, power steering lines. New within the last 100,000 miles is exhaust manifold, transmission clutch, radiator, condenser, oil cooler, turbo, camshaft. It also is equipped with a generator. Tandem axle. Exhaust brake. A/C. Pictures available, \$23,000. La-Grande, OR. Call or text Barry 541-786-4579



2005 FREIGHTLINER CENTURY Semi Tractor, 14L Detroit, 490 HP, 10 speed, air ride, scales, good rubber, 378,000 miles, \$15,900. Harrisburg, OR. 541-905-3137



80 Trucks

1997 Ford F-Superduty, 1 Ton, 12' Flatbed: with (3) toolboxes, 7.3 L Diesel, 5-speed manual transmission, 291,000 miles, well maintained, clean, runs strong, \$8,500. Blodgett, OR. 541-456-2631



2007 Ford F-750, 24' Stake Bed: 26,000 lbs., no CDL required, CAT Diesel, automatic transmission, air conditioning, plus 2500 lb. MBB Interlift, \$26,950. Eugene, OR. 541-515-6795



2001 Freightliner FL80: 7.2L Cat motor, Allison Automatic, 92k miles, can remove snow-plow. Please call for more information. \$20,000 OBO. Wallowa, OR. 541-569-2352



1992 Ford L8000: diesel, 5 speed, recent engine re-build and turbo, Non-CDL 26K GVW, air brakes, 22' box with rail lift, \$4,950 OBO. Brattain International, Albany, OR. 541-928-3324, ext. 1



2005 PETERBILT 379 Semi Tractor, 14L Detroit, 490 HP, 10 speed, air ride, scales, good rubber, 378,000 miles, \$15,900. Harrisburg, OR. 541-905-3137



80 Trucks

For Sale, 1986 Int'l S-1900 \$6000: 29' Rollback Bed, DT 466 Detroit Engine, 10-speed, Spicer transmission, 256,900 miles, good condition fleet truck. Please call Stuart at 541-386-2757 for more information. Available to view at 1995 12th Street, Hood River, OR.



2000 Western Star 4964: 13 speed, N-14 Cummins, \$17,500 OBO. Terrebonne, OR. 541-771-8886



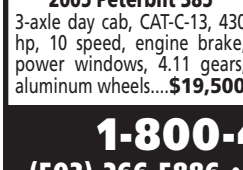
1999 Freightliner CAT 3406E, 10 speed, 3.90 ratio, 244" WB, PS, AC, CC, tilt and tele, L.P. 24.5.....\$8,500



2005 Peterbilt 379 ISX Cummins, 10 speed, engine brake, air slide, 5th wheel, PS, AC.....\$27,500



2005 Peterbilt 385 3-axle day cab, CAT-C-13, 430 hp, 10 speed, engine brake, power windows, 4.11 gears, aluminum wheels....\$19,500



80 Trucks



2001 VOLVO VNL SLEEPER \$12,000: 2001 VNL, Detroit 60 Series, RTLO 16913A, RT 40-145 3:90, 216" Wheelbase, very clean. Toledo, WA. Terry 360-864-4040

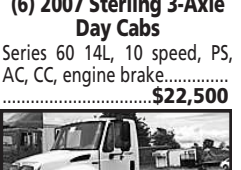
2005 Sterling: 430 CAT motor, 156CT, Chalmers rear suspension, 10 speed transmission, double frame, \$18,000. Winton, CA. 209-604-1342



2008 Freightliner M-2 Cummins ISC, 285hp Allison automatic trans., 12,000 lb. front, 40,000 lb. rear, 256" WB, PS, AC, CC, power windows, seating for three....\$26,500



2003 Mack RD688 Mack 350 hp, Mack 9Spd, 18,000 lb. front axle, camel back suspension, 4 axles, 24' flatbed.....\$24,500



1993 Great Dane 48x96 Reefer ThermoKing Supra II, roll up door, 4,000 lb rail gate.....\$6,500



1994 Wabash 45x96 Reefer ThermoKing SB III SR, 5,000 lb rail gate.....\$6,500



2007 International 8600 Cummins ISM 410hp, 10 speed, 3.90, 170" wheelbase, low miles.....\$19,500



80 Trucks



1990 International DT466C: 220 HP, used, runs good, \$3,500. Odell, OR. 541-354-2414 or 541-806-0888

Cummins BC II or III: 400 HP, completely rebuilt by professional, 625CPL, on engine stand, ready to go, \$12,500 exchange. Odell, OR. 541-354-2414 or 541-806-0888.

BEST SELLERS... "The phone rang off the hook." Vanveldhuizen Dairy • Turner, OR Call and list your BEST SELLER! 1-800-882-6789



100 Truck & Pickup Parts

1990 International DT466C: 220 HP, used, runs good, \$3,500. Odell, OR. 541-354-2414 or 541-806-0888

Cummins BC II or III: 400 HP, completely rebuilt by professional, 625CPL, on engine stand, ready to go, \$12,500 exchange. Odell, OR. 541-354-2414 or 541-806-0888.



100 Truck & Pickup Parts

FLATBEDS Complete, installed, wired & ready to work! 541-447-4555 PRO-LINE F.A.B. PRINEVILLE, OR 97136 1-800-882-6789 www.capitalpress.com



UTILITY / SERVICE TRUCK BODY Dakota Bodies, Model 144-LB. Removed from a Freightliner truck. Inside 144"x94"x73" +/- Outside 197"x98"x99" +/- Key for locking compartments included, \$2,500 OBO. Burcham's Metals, 3407 Pacific Blvd SW, Albany, OR. 541-926-4616

130 Tires & Wheels (50) 18.4R38 tires with tubes: 60% tread, \$200 each or \$1000 for all. Monroe, OR. 541-953-4890

100 Truck & Pickup Parts

LOVELL Truck Sales SINCE 1967

Advertisement for Lovell Truck Sales featuring various truck models and prices. Includes 1999 Freightliner, 2005 Peterbilt 379, 2005 Peterbilt 385, 2007 International 8600, and 1993 Great Dane 48x96 Reefer. Contact: 1-800-451-0012, 680 SW 1st (Hwy 99 East) Canby, OR.

LARSON & KING PORTLAND ENGINE REBUILDERS

Advertisement for Larson & King Portland Engine Rebuilders. Features a list of services, contact information (503) 230-1276, and website www.portlandenginerebuilders.com.

We Are The Best Darn Diesel Shop In Oregon!

Advertisement for a diesel shop in Oregon. Includes a list of gas engines (Chevrolet, Ford, Chrysler & Jeep, Foreign) and rebuilt diesel L/B engines (Cat, Ford, Dodge Cummins, GM) with prices. Contact: 800-823-6038.

Large vertical advertisement for Capital Press. Text: "Jump Start Your Ads by Placing Online! I had calls from New York, Minnesota, Idaho & Texas before the paper came out Friday! People are obviously using your website!" Contact: 800-882-6789.

Advertisement for America West Trailer Sales. Features various truck bed options: CM Smooth Side Flatbed, CM ER Flatbed, ALRS Roadside Flatbed, CM TM Deluxe Flatbed, CM RD Flatbed, ERAL Flatbed, and 7x8.6 CM Smooth Side Flatbed. Contact: 541-289-9181.

Newsday Crossword puzzle and Saturday Stumper by Brad Wilber. Includes clues for across and down words, and a grid for the crossword puzzle.

Advertisement for Les Schwab tires. Features a large image of a tractor, text: "YOUR FARM TIRE HEADQUARTERS", "24-HOUR ON-THE-FARM SERVICE", and "GROWING WITH FARMERS & RANCHERS FOR OVER 64 YEARS!". Contact: 800-823-6038.